

DATA PACKET

for 2014-15 planning

Evaluation & Assessment
Office of Institutional Research

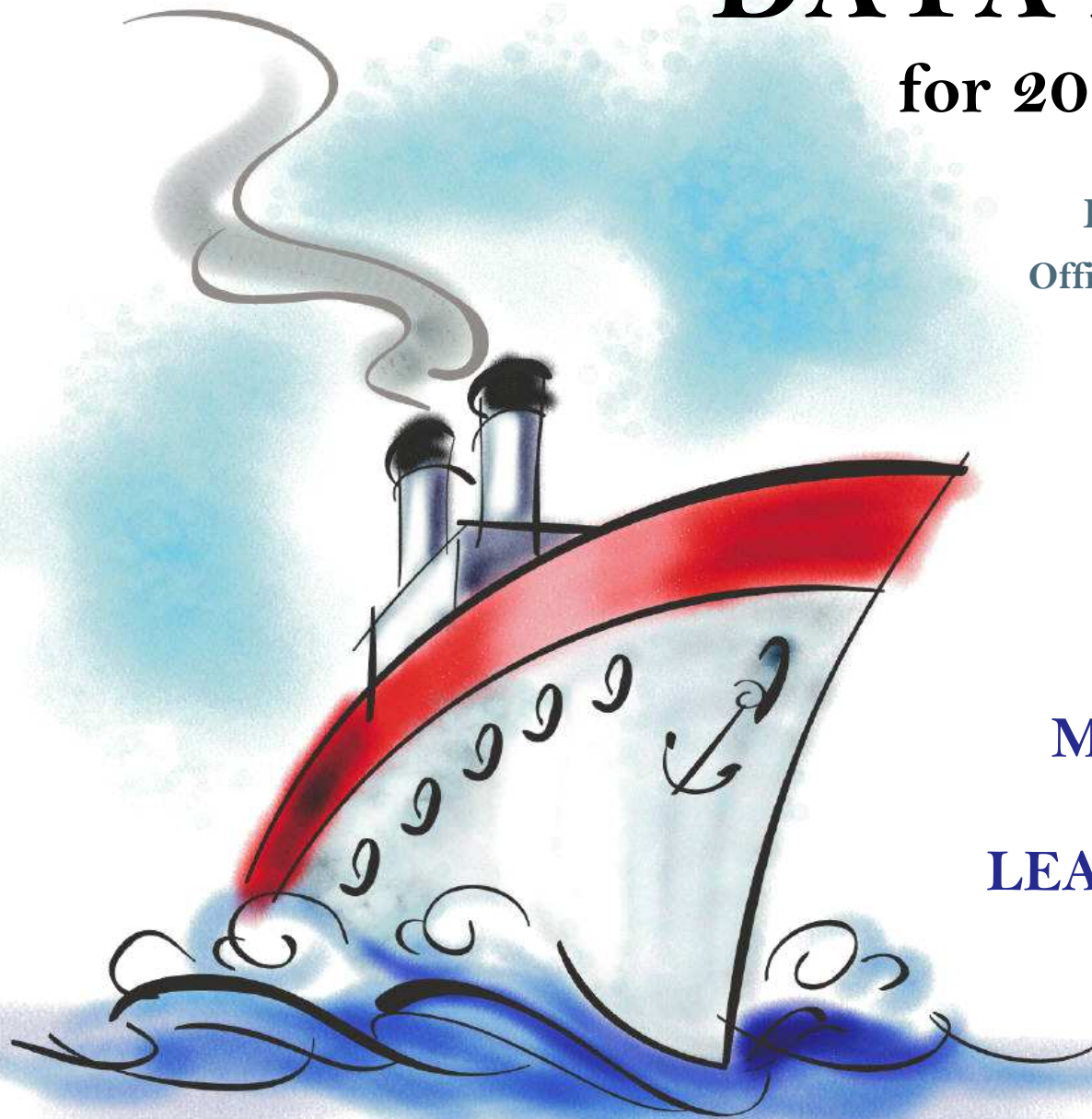
<http://mydata.dallasisd.org>

OIR@dallasisd.org

July 31, 2014

School Number 128

**MARTIN LUTHER
KING, JR.
LEARNING CENTER**



Dallas Independent School District

2. Contents Table of Contents

STUDENTS AND STAFF

- 6. Summary Summary of Student and Teacher Statistics
- 8. Enroll (2) Enrollment Statistics by Select Student Group
- 10. Teachers Teacher Statistics

STAAR (English)

- 11. Reading (3-8) STAAR 3-8 Reading in English
- 19. Math (3-8) STAAR 3-8 Mathematics in English

STAAR (Spanish)

- 27. Reading (3-8) STAAR 3-8 Reading in Spanish

STAAR M

- 35. Reading (3-8) STAAR M 3-8 Reading
- 43. Math (3-8) STAAR M 3-8 Mathematics

ITBS/LOGRAMOS

- 47. Compliance SCE Compliance for At-Risk Students
- 50. Math ITBS Mathematics Subtests

ENGLISH PROFICIENCY

- 56. TELPAS Texas English Language Proficiency Assessment System

LOCAL ASSESSMENT

- 58. ACP Assessments of Course Performance

3. Notes Notes and Data Descriptions

- 7. Enroll (1) Enrollment Statistics by Ethnicity
- 9. Attendance Student Attendance Statistics

- 15. Writing (3-8) STAAR 3-8 Writing in English
- 23. Science (3-8) STAAR 3-8 Science in English

31. Writing (3-8) STAAR 3-8 Writing in Spanish

39. Writing (3-8) STAAR M 3-8 Writing

- 48. Reading ITBS Reading Subtests
- 54. Reading Logramos Reading Subtests

2013-14 SCHOOL SUMMARY

- Student percentages are computed as the percentage of total student enrollment.
- Additional statistics are available in ENROLLMENT and TEACHER reports.
- Race/ethnic categories are based on the newest federal standards for ethnicity and race reporting, though some categories have been combined because of small group sizes. Students reporting their ethnicity as “Hispanic” are not counted in any race category.
- “Economically disadvantaged” students are those who qualify for free or reduced-price lunch through the federal government's program.
- Teacher demographics and assignments are from the district's Public Education Information Management System (PEIMS) submission to the TEA.

ENROLLMENT

- Statistics are based on the school's enrollment at the end of the fifth six-weeks grading period.
- “Economically disadvantaged” students are those receiving free or reduced-price lunches.
- “New” students were new to the district in 2013-14. They are counted as new if not enrolled in a district campus before the last day of the 2012-13 school year.
- The “retention rate” is the percentage of students in the same grade at the end of the fifth six-weeks grading period for both 2012-13 and 2013-14.

ATTENDANCE

- Statistics are based on student attendance through the end of the sixth six-weeks grading period (the end of the school year).
- “Average daily membership” is the total number of school days students were ENROLLED divided by the number of school days in the year.
- The “average daily attendance” number (N) is the total number of school days students were IN ATTENDANCE divided by the number of school days in the year. The “average daily attendance” percentage (%) is the average attendance rate. For each student, the number of days attended is divided by the number of days enrolled. This rate is then averaged across students.
- The number (N) of “yearly transactions” is the total number of transfer and withdrawal transactions in the school year. The percentage (%) is the number of transactions divided by “average daily membership,” which gives (on average) the percentage of the membership associated with a transaction.
- “Continuously enrolled” students are enrolled and in attendance for a minimum number of instructional days in at least one course at the school between the beginning of the school year and the first day of the main STAAR testing period. The minimum number varies depending on the school year's calendar, but is typically around 130 days.
- The “stability rate” is the number of continuously enrolled students divided by “average daily membership.”

TEACHERS

- Teacher demographics and assignments are from the district's Public Education Information Management System (PEIMS) submission to the TEA.
- Teacher absences counted towards the average DO NOT include vacation days (coded as VAC in personnel database).
- Retention rate for a school year is computed with numerator “# of teachers assigned to the school both that year and the year prior” and denominator “# of teachers assigned to the school for the prior year.” That is, the retention rate is the percentage of the prior year's teachers who continued at the school.

STAAR, STAAR L, and STAAR M

- Cells marked with an asterisk (*) indicate five or fewer students were tested. Blank cells indicate no students were tested.
- Student group assignments are from the district's Public Education Information Management System (PEIMS) submission to the TEA.
- STAAR statistics are based on results from standard STAAR only. STAAR L and STAAR M statistics are computed separately, following TEA reporting practice.
- “Percentage Satisfactory” is the percentage of students achieving Level 2 (Satisfactory) or Level 3 (Advanced).
- Statistics by reporting category are averages for all students (across student groups and genders).
- An “average percentage correct” is computed as follows: for each student, divide the number of items correctly answered by the total number of items in the test section, then average the resulting percentages across all students. For short answers on EOC English tests, an “average rating” is presented; STAAR EOC short answers are rated on a scale of 0 to 3. For written compositions on writing tests, “average score points” is presented. Additional details provided in report footnotes.
- Reading and mathematics statistics for SSI grades 5 and 8 are based on scores cumulative through the second administration.

SCE COMPLIANCE and ITBS / ITED / LOGRAMOS

- Cells marked with an asterisk (*) indicate five or fewer students were tested. Blank cells indicate no students were tested.
- Student group assignments are based on demographic data in the Dallas ISD student database.
- Kindergarten ITBS reading statistics are based on the Reading Profile Total summary score. All other grades' ITBS reading statistics, and Logramos reading statistics for all grades, are based on the Reading Total summary score. (Reading Total values not available with use of the ITBS form administered in kindergarten.) “Number tested” statistics include kindergarten.
- Kindergarten ITBS mathematics statistics are based on the Mathematics subtest score. All other grades' statistics are based on the Mathematics Total summary score. (Mathematics Total values not available with use of the ITBS form administered in kindergarten.) “Number tested” statistics include kindergarten.
- Mathematics Total summary scores are combinations of the Mathematics Concepts, Problems, and Computation subtest results. For schools that did not administer Mathematics Concepts or Mathematics Problems subtests, Mathematics Computation statistics are provided separately.

TELPAS

- Students are counted as having tested if any one of the four domains is rated. Because a TELPAS composite rating is not assigned to a student unless all four domains are rated, the number of TELPAS composite ratings may be smaller than the number tested.
- If a student's composite rating did not increase at least one level from 2013 to 2014, the TEA did not report the 2013 composite rating.
- If a student is rated as advanced high in 2014, the TEA does not differentiate between the advanced and advanced high levels from 2013.

ACP

- Cells marked with an asterisk (*) indicate five or fewer students were tested. Blank cells indicate no students were tested.
- The ACPs are semester exams administered in grades K-12. Not all courses have ACPs. In MIDDLE and HIGH school, ACP results account for a portion of students' final semester grades (10% and 15% respectively). "Average course mark (no ACP)" is computed from semester grades before factoring in ACP scores. In ELEMENTARY school, ACP results account for 5% of students' semester grades for core courses; course-grade statistics are not reported in data packets for elementary grades.
- Raw scores on the ACPs (percentage of items correct) are scaled each year to maintain similar annual passing rates for the district.
- A scale score of at least 70 percent is required to pass an ACP. A course mark of at least 70 percent is required to pass a course.
- Statistics are computed separately for Semester 1 and Semester 2 tests; time of administration during the school year is not relevant. Results from tests written for different school years are not combined.

STUDENT ENROLLMENT

Grade	Enrollment
PK	37
KN	74
1	83
2	71
3	65
4	61
5	53
ALL	444

STUDENT AND TEACHER RACE/ETHNICITY

Ethnicity/Race	Students		Teachers	
	Number	Percent	Number	Percent
Black/African American	326	73.4	23	74.2
American Indian/Alaska Native	6	1.4	*	*
Asian/Hawaiian/Pacific Islander	3	0.7	*	*
Hispanic	102	23.0	6	19.4
White	6	1.4	1	3.2
Multiple	1	0.2	0	0.0
Other* (teachers only)	—	—	1	3.2
Not reported (students only)	0	0.0	—	—

*For teachers, "Other" category includes American Indian/Alaska Native and Asian/Hawaiian/Pacific Islander.

SELECT STUDENT GROUP ENROLLMENT

Group	Number	Percent
At-Risk	231	52.0
Economically disadvantaged	408	91.9
Limited English proficient (LEP)	89	20.0
Special education	31	7.0
Talented and Gifted (TAG)	33	7.4

Grade	Year	Enrollment	African American		American Indian		Asian		Hispanic		White		Multiple category	
			N	%	N	%	N	%	N	%	N	%	N	%
PK	2012	17	16	94.1	0	0.0	0	0.0	1	5.9	0	0.0	0	0.0
	2013	50	37	74.0	0	0.0	0	0.0	13	26.0	0	0.0	0	0.0
	2014	37	24	64.9	6	16.2	0	0.0	6	16.2	1	2.7	0	0.0
KN	2012	36	35	97.2	0	0.0	0	0.0	1	2.8	0	0.0	0	0.0
	2013	79	57	72.2	0	0.0	0	0.0	22	27.8	0	0.0	0	0.0
	2014	74	50	67.6	0	0.0	1	1.4	21	28.4	2	2.7	0	0.0
1	2012	29	29	100.0	0	0.0	0	0.0	0	0.0	0	0.0	0	0.0
	2013	77	62	80.5	0	0.0	1	1.3	13	16.9	0	0.0	1	1.3
	2014	83	58	69.9	0	0.0	1	1.2	24	28.9	0	0.0	0	0.0
2	2012	29	27	93.1	0	0.0	0	0.0	2	6.9	0	0.0	0	0.0
	2013	75	60	80.0	0	0.0	0	0.0	13	17.3	1	1.3	1	1.3
	2014	71	53	74.6	0	0.0	1	1.4	16	22.5	0	0.0	1	1.4
3	2012	27	26	96.3	0	0.0	0	0.0	1	3.7	0	0.0	0	0.0
	2013	60	43	71.7	0	0.0	0	0.0	16	26.7	1	1.7	0	0.0
	2014	65	53	81.5	0	0.0	0	0.0	9	13.8	3	4.6	0	0.0
4	2012	42	40	95.2	0	0.0	0	0.0	2	4.8	0	0.0	0	0.0
	2013	66	52	78.8	0	0.0	0	0.0	13	19.7	0	0.0	0	0.0
	2014	61	46	75.4	0	0.0	0	0.0	15	24.6	0	0.0	0	0.0
5	2012	28	26	92.9	0	0.0	0	0.0	1	3.6	1	3.6	0	0.0
	2013	73	55	75.3	0	0.0	0	0.0	16	21.9	2	2.7	0	0.0
	2014	53	42	79.2	0	0.0	0	0.0	11	20.8	0	0.0	0	0.0
PK-5	2012	208	199	95.7	0	0.0	0	0.0	8	3.8	1	0.5	0	0.0
	2013	480	366	76.3	0	0.0	1	0.2	106	22.1	4	0.8	2	0.4
	2014	444	326	73.4	6	1.4	3	0.7	102	23.0	6	1.4	1	0.2

Grade	Year	Enrollment	Economically Disadvantaged		LEP		Special Education		At Risk		TAG		New (to District)		Gender		Retention Rate (%)
			N	%	N	%	N	%	N	%	N	%	N	%	% Male	% Female	
PK	2012	17	16	94.1	1	5.9	0	0.0	1	5.9	0	0.0	16	94.1	58.8	41.2	5.9
	2013	50	50	100.0	11	22.0	2	4.0	15	30.0	0	0.0	44	88.0	46.0	54.0	12.0
	2014	37	33	89.2	11	29.7	0	0.0	11	29.7	0	0.0	35	94.6	54.1	45.9	5.4
KN	2012	36	36	100.0	1	2.8	0	0.0	1	2.8	0	0.0	14	38.9	55.6	44.4	0.0
	2013	79	73	92.4	16	20.3	1	1.3	23	29.1	0	0.0	31	39.2	55.7	44.3	0.0
	2014	74	67	90.5	18	24.3	2	2.7	25	33.8	0	0.0	28	37.8	50.0	50.0	2.7
1	2012	29	29	100.0	0	0.0	4	13.8	3	10.3	0	0.0	3	10.3	55.2	44.8	6.9
	2013	77	76	98.7	9	11.7	5	6.5	22	28.6	3	3.9	11	14.3	57.1	42.9	9.1
	2014	83	73	88.0	18	21.7	3	3.6	28	33.7	7	8.4	15	18.1	60.2	39.8	0.0
2	2012	29	29	100.0	1	3.4	2	6.9	16	55.2	3	10.3	1	3.4	55.2	44.8	3.4
	2013	75	75	100.0	9	12.0	10	13.3	37	49.3	4	5.3	9	12.0	57.3	42.7	5.3
	2014	71	67	94.4	12	16.9	1	1.4	31	43.7	10	14.1	7	9.9	49.3	50.7	0.0
3	2012	27	26	96.3	1	3.7	3	11.1	16	59.3	2	7.4	4	14.8	48.1	51.9	0.0
	2013	60	55	91.7	12	20.0	4	6.7	42	70.0	4	6.7	8	13.3	50.0	50.0	5.0
	2014	65	63	96.9	9	13.8	10	15.4	49	75.4	6	9.2	6	9.2	63.1	36.9	0.0
4	2012	42	41	97.6	2	4.8	18	42.9	39	92.9	3	7.1	3	7.1	40.5	59.5	2.4
	2013	66	62	93.9	10	15.2	6	9.1	44	66.7	7	10.6	11	16.7	59.1	40.9	1.5
	2014	61	56	91.8	11	18.0	9	14.8	49	80.3	3	4.9	7	11.5	47.5	52.5	0.0
5	2012	28	27	96.4	0	0.0	13	46.4	21	75.0	2	7.1	1	3.6	53.6	46.4	0.0
	2013	73	71	97.3	12	16.4	19	26.0	60	82.2	6	8.2	7	9.6	38.4	61.6	1.4
	2014	53	49	92.5	10	18.9	6	11.3	38	71.7	7	13.2	3	5.7	60.4	39.6	0.0
PK-5	2012	208	204	98.1	6	2.9	40	19.2	97	46.6	10	4.8	42	20.2	51.4	48.6	2.4
	2013	480	462	96.3	79	16.5	47	9.8	243	50.6	24	5.0	121	25.2	52.3	47.7	4.6
	2014	444	408	91.9	89	20.0	31	7.0	231	52.0	33	7.4	101	22.7	55.0	45.0	0.9

Grade	Year	Average Daily Membership		Average Daily Attendance				Yearly Transactions			Continuously Enrolled		Stability Rate	
		N	District	N	%	District N	District %	N	%	District %	N	District	%	District
KN	2012	34	13,633	32	94.4	13,086	96.0	7	20.5	19.9	28	11,731	81.9	86.0
	2013	75	14,067	71	94.0	13,411	95.3	39	51.7	20.0	60	12,178	79.6	86.6
	2014	72	13,618	69	95.4	13,058	95.9	26	36.1	19.8	56	11,271	77.7	82.8
1	2012	28	14,026	27	94.3	13,533	96.5	11	38.8	18.3	21	12,292	74.1	87.6
	2013	76	14,140	72	94.6	13,578	96.0	41	54.1	18.7	57	12,528	75.2	88.6
	2014	82	14,262	78	95.2	13,732	96.3	41	49.8	19.2	59	12,149	71.6	85.2
2	2012	32	13,338	31	96.2	12,932	97.0	8	25.0	16.8	26	11,883	81.2	89.1
	2013	75	13,555	72	96.2	13,077	96.5	26	34.8	17.1	62	12,206	82.9	90.0
	2014	70	13,652	68	96.7	13,209	96.8	33	47.2	17.0	54	11,868	77.3	86.9
3	2012	25	12,874	24	95.4	12,508	97.2	12	48.1	15.5	18	11,592	72.1	90.0
	2013	60	12,879	57	95.4	12,466	96.8	18	30.1	15.9	54	11,710	90.2	90.9
	2014	65	13,159	61	94.9	12,763	97.0	23	35.5	17.3	56	11,491	86.5	87.3
4	2012	40	12,493	38	96.3	12,139	97.2	17	42.8	16.6	30	11,218	75.6	89.8
	2013	60	12,406	57	95.7	12,029	97.0	31	51.9	16.5	48	11,339	80.3	91.4
	2014	63	12,543	60	95.9	12,180	97.1	22	35.1	16.3	53	11,075	84.5	88.3
5	2012	27	12,562	26	95.4	12,220	97.3	7	26.0	5.3	22	11,364	81.7	90.5
	2013	75	12,053	72	95.1	11,696	97.0	12	15.9	6.2	57	11,075	75.6	91.9
	2014	56	12,130	54	95.7	11,795	97.2	13	23.2	5.4	47	10,790	83.8	89.0
KN-5	2012	186	78,926	178	95.4	76,419	96.8	62	33.3	15.5	145	70,080	77.9	88.8
	2013	421	79,100	401	95.1	76,255	96.4	167	39.7	16.0	338	71,036	80.3	89.8
	2014	408	79,365	390	95.6	76,736	96.7	158	38.7	16.0	325	68,644	79.7	86.5

Teachers: 31

DISTRIBUTIONS

Ethnicity/Race	Number	Percentage
African American	23	74.2
Hispanic	6	19.4
White	1	3.2
Multiple	0	0.0
Other	1	3.2

Gender	Number	Percentage
Female	20	64.5
Male	11	35.5

ATTENDANCE / RETENTION

	Average Absences	Retention Rate
2011-12	5.8	—
2012-13	7.1	86.4
2013-14	6.5	84.8

YEARS EXPERIENCE

Years	Number	Percentage
Beginning (0)	3	9.7
1	2	6.5
2	0	0.0
3	6	19.4
4	0	0.0
5	1	3.2
1-3	8	25.8
More than 3	20	64.5
1 - 5	9	29.0
6 - 10	3	9.7
11 - 20	9	29.0
More than 20	7	22.6

PERCENTAGE SATISFACTORY (Levels 2 or 3)

Grade	Year	White	African Amer	Hispanic	Econ Disadv	Special Educ	LEP	At Risk	Migrant	Male	Female	All	District	Number Tested (All Students)
3	2012		65.2		63.6			33.3		50.0	76.9	65.2	63.6	23
	2013	*	73.8	*	77.3		*	60.0		60.9	87.5	74.5	67.8	47
	2014	*	54.8		56.8	*		43.3		51.9	64.7	56.8	61.7	44
4	2012		68.2		68.2			28.6		57.1	73.3	68.2	64.3	22
	2013		79.5	*	76.7	*	*	38.5		60.7	85.7	71.4	62.3	49
	2014		87.2	75.0	84.2		*	73.9		94.4	79.3	85.1	59.4	47
5	2012		77.8	*	78.9	*		85.7		66.7	90.0	78.9	68.0	19
	2013	*	78.6	80.0	79.6		75.0	73.1		72.7	84.4	79.6	81.5	54
	2014		95.0	75.0	88.4		71.4	82.8		82.8	100.0	89.8	78.5	49
3-5	2012		69.8	*	69.8	*		47.8		57.7	78.9	70.3	65.5	64
	2013	*	77.2	73.7	78.0	*	63.6	60.9		64.4	85.7	75.3	71.1	150
	2014	*	78.5	75.0	76.0	*	66.7	65.9		74.3	81.8	77.9	66.7	140

NUMBER TESTED IN GRADES 3-5													
2012		63	1	63	4		23		26	38	64	22,173	
2013	3	123	19	141	1	11	69		73	77	150	21,619	
2014	2	121	16	125	2	12	82		74	66	140	21,304	

NUMBER UNSATISFACTORY (Level 1)

Grade	Year	White	African Amer	Hispanic	Econ Disadv	Special Educ	LEP	At Risk	Migrant	Male	Female	All	District	Number Tested (All Students)
3	2012		8		8			6		5	3	8	2,466	23
	2013	*	11	*	10		*	12		9	3	12	2,181	47
	2014	*	19		19	*		17		13	6	19	2,649	44
4	2012		7		7			5		3	4	7	2,529	22
	2013		8	*	10	*	*	8		11	3	14	2,581	49
	2014		5	2	6		*	6		1	6	7	2,858	47
5	2012		4	*	4	*		1		3	1	4	2,665	19
	2013	*	9	2	11		2	7		6	5	11	1,484	54
	2014		2	2	5		2	5		5	0	5	1,582	49
3-5	2012		19	*	19	*		12		11	8	19	7,660	64
	2013	*	28	5	31	*	4	27		26	11	37	6,246	150
	2014	*	26	4	30	*	4	28		19	12	31	7,089	140

NUMBER TESTED IN GRADES 3-5													
2012		63	1	63	4		23		26	38	64	22,173	
2013	3	123	19	141	1	11	69		73	77	150	21,619	
2014	2	121	16	125	2	12	82		74	66	140	21,304	

PERCENTAGE ADVANCED (Level 3)

Grade	Year	White	African Amer	Hispanic	Econ Disadv	Special Educ	LEP	At Risk	Migrant	Male	Female	All	District	Number Tested (All Students)
3	2012		13.0		13.6			0.0		10.0	15.4	13.0	12.6	23
	2013	*	9.5	*	13.6		*	6.7		4.3	20.8	12.8	13.6	47
	2014	*	14.3		15.9	*		6.7		14.8	17.6	15.9	9.6	44
4	2012		4.5		4.5			14.3		0.0	6.7	4.5	11.2	22
	2013		12.8	*	14.0	*	*	7.7		3.6	23.8	12.2	13.5	49
	2014		12.8	12.5	13.2		*	8.7		16.7	10.3	12.8	12.0	47
5	2012		5.6	*	5.3	*		0.0		0.0	10.0	5.3	11.1	19
	2013	*	4.8	20.0	7.4		12.5	7.7		4.5	9.4	7.4	13.3	54
	2014		2.5	12.5	4.7		0.0	3.4		3.4	5.0	4.1	11.5	49
3-5	2012		7.9	*	7.9	*		4.3		3.8	10.5	7.8	11.6	64
	2013	*	8.9	15.8	11.3	*	9.1	7.2		4.1	16.9	10.7	13.5	150
	2014	*	9.9	12.5	11.2	*	0.0	6.1		10.8	10.6	10.7	11.1	140

NUMBER TESTED IN GRADE 3-5													
2012		63	1	63	4		23		26	38	64	22,173	
2013	3	123	19	141	1	11	69		73	77	150	21,619	
2014	2	121	16	125	2	12	82		74	66	140	21,304	

AVERAGE PERCENTAGE OF ITEMS CORRECT BY REPORTING CATEGORY

Grade	Year	REPORTING CATEGORY		
		1. Understanding Across Genres (GR 3-5) 1. Understanding/Analysis Across Genres (GR 6-8)	2. Understanding/Analysis of Literary Texts	3. Understanding/Analysis of Informational Texts
3	2012	59.4	58.9	63.3
	2013	61.7	59.1	56.3
	2014	60.2	57.2	56.7
4	2012	63.2	61.6	58.0
	2013	60.2	61.8	57.7
	2014	67.7	69.6	66.9
5	2012	65.8	59.6	67.8
	2013	66.3	67.0	69.9
	2014	69.8	62.8	68.1
3-5	2012	62.6	60.0	62.8
	2013	62.9	62.8	61.6
	2014	66.1	63.3	64.1

PERCENTAGE SATISFACTORY (Levels 2 or 3)

Grade	Year	White	African Amer	Hispanic	Econ Disadv	Special Educ	LEP	At Risk	Migrant	Male	Female	All	District	Number Tested (All Students)
4	2012		77.3		77.3			57.1		71.4	80.0	77.3	60.6	22
	2013		89.5	*	88.1		*	69.2		83.3	95.2	88.9	63.9	45
	2014		77.5	*	78.9		*	66.7		82.4	75.0	77.8	61.9	45

NUMBER TESTED IN GRADE 4													
2012		22		22			7		7	15	22	7,039	
2013		38	5	42		1	13		24	21	45	6,771	
2014		40	5	38		2	21		17	28	45	7,022	

NUMBER UNSATISFACTORY (Level 1)

Grade	Year	White	African Amer	Hispanic	Econ Disadv	Special Educ	LEP	At Risk	Migrant	Male	Female	All	District	Number Tested (All Students)
4	2012		5		5			3		2	3	5	2,772	22
	2013		4	*	5		*	4		4	1	5	2,442	45
	2014		9	*	8		*	7		3	7	10	2,675	45

NUMBER TESTED IN GRADE 4													
2012		22		22			7		7	15	22	7,039	
2013		38	5	42		1	13		24	21	45	6,771	
2014		40	5	38		2	21		17	28	45	7,022	

PERCENTAGE ADVANCED (Level 3)

Grade	Year	White	African Amer	Hispanic	Econ Disadv	Special Educ	LEP	At Risk	Migrant	Male	Female	All	District	Number Tested (All Students)
4	2012		13.6		13.6			14.3		0.0	20.0	13.6	5.1	22
	2013		15.8	*	16.7		*	15.4		25.0	4.8	15.6	4.7	45
	2014		2.5	*	5.3		*	4.8		0.0	7.1	4.4	3.7	45

NUMBER TESTED IN GRADE 4													
2012		22		22			7		7	15	22	7,039	
2013		38	5	42		1	13		24	21	45	6,771	
2014		40	5	38		2	21		17	28	45	7,022	

AVERAGE PERCENTAGE OF ITEMS CORRECT BY REPORTING CATEGORY

Grade	Year	REPORTING CATEGORY			
		1. Composition ¹ GR 4: Personal Narrative GR 7: Expository	1. Composition ¹ GR 4: Expository GR 7: Personal Narrative	2. Revision	3. Editing
4	2012	2.7	2.6	58.1	59.3
	2013	4.3	4.6	73.1	77.0
	2014	4.2	4.7	69.6	67.3

¹Average score points (range 0-8). A STAAR composition is rated twice on a scale of 1 to 4, and the ratings are summed to determine score points for the composition. Score point scale: 0=Non-scorable; 2=Very Limited; 3=between Very Limited and Basic; 4=Basic; 5=between Basic and Satisfactory; 6=Satisfactory; 7=between Satisfactory and Accomplished; 8=Accomplished

PERCENTAGE SATISFACTORY (Levels 2 or 3)

Grade	Year	White	African Amer	Hispanic	Econ Disadv	Special Educ	LEP	At Risk	Migrant	Male	Female	All	District	Number Tested (All Students)
3	2012		62.5	*	62.5	*	*	45.5		63.6	64.3	64.0	55.4	25
	2013	*	71.4	90.9	74.0		88.9	70.3		64.3	88.5	75.9	57.5	54
	2014	*	64.3	50.0	63.5	*	50.0	50.0		56.3	75.0	63.5	59.3	52
4	2012		56.5	*	52.0	*	*	20.0		44.4	56.3	52.0	53.0	25
	2013		71.8	72.7	70.8	*	*	55.6		64.7	71.4	67.3	57.5	55
	2014		64.1	50.0	61.9		33.3	51.9		65.0	58.1	60.8	59.0	51
5	2012		83.3	*	84.2	*		75.0		88.9	80.0	84.2	64.1	19
	2013	*	64.3	66.7	66.1		60.0	57.1		68.2	64.7	66.1	81.7	56
	2014		79.5	88.9	76.7		87.5	69.0		76.7	84.2	79.6	81.4	49
3-5	2012		66.2	*	64.7	25.0	*	44.8		65.5	65.0	65.2	57.5	69
	2013	*	69.1	76.5	70.1	*	70.8	62.7		65.5	74.1	69.7	65.3	165
	2014	*	69.2	62.1	67.2	*	56.0	56.4		65.9	70.0	67.8	66.3	152

NUMBER TESTED IN GRADES 3-5													
2012		65	4	68	8	3	83		29	40	69	35,372	
2013	3	123	34	154	1	24	83		84	81	165	34,686	
2014	2	120	29	137	2	25	94		82	70	152	35,222	

NUMBER UNSATISFACTORY (Level 1)

Grade	Year	White	African Amer	Hispanic	Econ Disadv	Special Educ	LEP	At Risk	Migrant	Male	Female	All	District	Number Tested (All Students)
3	2012		9	*	9	*	*	6		4	5	9	5,287	25
	2013	*	12	1	13		1	11		10	3	13	5,086	54
	2014	*	15	4	19	*	4	19		14	5	19	4,988	52
4	2012		10	*	12	*	*	8		5	7	12	5,511	25
	2013		11	3	14	*	*	8		12	6	18	4,919	55
	2014		14	6	16		6	13		7	13	20	4,803	51
5	2012		3	*	3	*		2		1	2	3	4,228	19
	2013	*	15	4	19		4	12		7	12	19	2,035	56
	2014		8	1	10		1	9		7	3	10	2,088	49
3-5	2012		22	*	24	6	*	16		10	14	24	15,026	69
	2013	*	38	8	46	*	7	31		29	21	50	12,040	165
	2014	*	37	11	45	*	11	41		28	21	49	11,879	152

NUMBER TESTED IN GRADES 3-5													
2012		65	4	68	8	3	83		29	40	69	35,372	
2013	3	123	34	154	1	24	83		84	81	165	34,686	
2014	2	120	29	137	2	25	94		82	70	152	35,222	

PERCENTAGE ADVANCED (Level 3)

Grade	Year	White	African Amer	Hispanic	Econ Disadv	Special Educ	LEP	At Risk	Migrant	Male	Female	All	District	Number Tested (All Students)
3	2012		0.0	*	0.0	*	*	0.0		0.0	0.0	0.0	7.9	25
	2013	*	2.4	0.0	2.0		0.0	0.0		0.0	3.8	1.9	9.1	54
	2014	*	0.0	12.5	1.9	*	12.5	2.6		0.0	5.0	1.9	10.4	52
4	2012		0.0	*	0.0	*	*	0.0		0.0	0.0	0.0	6.1	25
	2013		7.7	9.1	6.3	*	*	5.6		8.8	4.8	7.3	9.5	55
	2014		0.0	8.3	2.4		0.0	0.0		0.0	3.2	2.0	14.0	51
5	2012		5.6	*	5.3	*		12.5		0.0	10.0	5.3	10.4	19
	2013	*	2.4	0.0	1.8		0.0	0.0		4.5	0.0	1.8	12.8	56
	2014		0.0	11.1	2.3		12.5	3.4		3.3	0.0	2.0	15.7	49
3-5	2012		1.5	*	1.5	0.0	*	3.4		0.0	2.5	1.4	8.1	69
	2013	*	4.1	2.9	3.2	*	0.0	1.2		4.8	2.5	3.6	10.4	165
	2014	*	0.0	10.3	2.2	*	8.0	2.1		1.2	2.9	2.0	13.3	152

NUMBER TESTED IN GRADE 3-5													
2012		65	4	68	8	3	29		29	40	69	35,372	
2013	3	123	34	154	1	24	83		84	81	165	34,686	
2014	2	120	29	137	2	25	94		82	70	152	35,222	

AVERAGE PERCENTAGE OF ITEMS CORRECT BY REPORTING CATEGORY

Grade	Year	REPORTING CATEGORY				
		1. Numbers, Operations, and Quantitative Reasoning	2. Patterns, Relationships, and Algebraic Reasoning	3. Geometry and Spatial Reasoning	4. Measurement	5. Probability and Statistics
3	2012	58.4	58.5	70.7	56.0	46.0
	2013	56.3	63.0	65.0	65.7	63.3
	2014	60.6	56.0	60.5	64.2	43.6
4	2012	60.5	69.3	57.7	50.5	62.4
	2013	67.0	69.4	67.3	56.4	57.1
	2014	56.2	63.4	68.8	64.0	49.8
5	2012	71.6	76.3	68.4	61.2	70.8
	2013	62.1	58.9	54.3	50.2	59.4
	2014	69.6	71.4	66.8	63.8	60.1
3-5	2012	62.8	67.3	65.3	55.4	58.8
	2013	61.8	63.7	62.1	57.3	59.9
	2014	62.0	63.5	65.3	64.0	51.0

PERCENTAGE SATISFACTORY (Levels 2 or 3)

Grade	Year	White	African Amer	Hispanic	Econ Disadv	Special Educ	LEP	At Risk	Migrant	Male	Female	All	District	Number Tested (All Students)
5	2012		93.8	*	94.1	*		83.3		87.5	100.0	94.4	58.2	18
	2013	*	56.1	63.6	64.0		55.6	46.2		50.0	64.7	59.3	65.1	54
	2014		81.1	55.6	75.6		50.0	57.1		73.3	76.5	74.5	61.3	47

NUMBER TESTED IN GRADE 5													
2012		16	1	17	3		6		8	10	18	10,697	
2013	2	41	11	50		9	26		20	34	54	10,180	
2014		37	9	41		8	28		30	17	47	9,073	

NUMBER UNSATISFACTORY (Level 1)

Grade	Year	White	African Amer	Hispanic	Econ Disadv	Special Educ	LEP	At Risk	Migrant	Male	Female	All	District	Number Tested (All Students)
5	2012		1	*	1	*		1		1	0	1	4476	18
	2013	*	18	4	18		4	14		10	12	22	3551	54
	2014		7	4	10		4	12		8	4	12	3511	47

NUMBER TESTED IN GRADE 5													
2012		16	1	17	3		6		8	10	18	10,697	
2013	2	41	11	50		9	26		20	34	54	10,180	
2014		37	9	41		8	28		30	17	47	9,073	

PERCENTAGE ADVANCED (Level 3)

Grade	Year	White	African Amer	Hispanic	Econ Disadv	Special Educ	LEP	At Risk	Migrant	Male	Female	All	District	Number Tested (All Students)
5	2012		0.0	*	0.0	*		0.0		0.0	0.0	0.0	6.5	18
	2013	*	0.0	9.1	2.0		0.0	0.0		5.0	0.0	1.9	6.6	54
	2014		0.0	0.0	0.0		0.0	0.0		0.0	0.0	0.0	5.3	47

NUMBER TESTED IN GRADE 5													
2012		16	1	17	3		6		8	10	18	10,697	
2013	2	41	11	50		9	26		20	34	54	10,180	
2014		37	9	41		8	28		30	17	47	9,073	

AVERAGE PERCENTAGE OF ITEMS CORRECT BY REPORTING CATEGORY

Grade	Year	REPORTING CATEGORY			
		1. Matter and Energy	2. Force, Motion, and Energy	3. Earth and Space	4. Organisms and Environments
5	2012	78.5	77.8	75.5	80.2
	2013	64.4	63.3	51.4	54.6
	2014	66.8	71.9	67.0	62.9

PERCENTAGE SATISFACTORY (Levels 2 or 3)

Grade	Year	White	African Amer	Hispanic	Econ Disadv	Special Educ	LEP	At Risk	Migrant	Male	Female	All	District	Number Tested (All Students)
3	2012			*	*		*	*		*		*	65.5	1
	2013			87.5	85.7		87.5	87.5		*	*	87.5	69.6	8
	2014			37.5	37.5		37.5	37.5		*	*	37.5	65.2	8
4	2012												64.4	0
	2013			100.0	*		*	*		100.0		100.0	61.0	6
	2014			*	*		*	*		*	*	*	60.8	4
5	2012												72.1	0
	2013			*	*		*	*			*	*	86.5	2
	2014			*	*		*	*		*		*	83.0	1
3-5	2012			*	*		*	*		*		*	66.8	1
	2013			93.8	92.9		92.9	93.3		90.9	*	93.8	70.6	16
	2014			53.8	53.8		53.8	53.8		37.5	*	53.8	68.7	13

NUMBER TESTED IN GRADES 3-5													
2012			1	1		1	1		1		1		14,102
2013			16	14		14	15		11	5	16		13,810
2014			13	13		13	13		8	5	13		14,654

NUMBER UNSATISFACTORY (Level 1)

Grade	Year	White	African Amer	Hispanic	Econ Disadv	Special Educ	LEP	At Risk	Migrant	Male	Female	All	District	Number Tested (All Students)
3	2012			*	*		*	*		*		*	1,957	1
	2013			1	1		1	1		*	*	1	1,697	8
	2014			5	5		5	5		*	*	5	2,005	8
4	2012												1,728	0
	2013			0	*		*	*		0		0	1,915	6
	2014			*	*		*	*		*	*	*	1,891	4
5	2012												998	0
	2013			*	*		*	*			*	*	449	2
	2014			*	*		*	*		*		*	692	1
3-5	2012			*	*		*	*		*		*	4,683	1
	2013			1	1		1	1		1	*	1	4,061	16
	2014			6	6		6	6		5	*	6	4,588	13

NUMBER TESTED IN GRADES 3-5													
2012			1	1		1	1		1		1		14,102
2013			16	14		14	15		11	5	16		13,810
2014			13	13		13	13		8	5	13		14,654

PERCENTAGE ADVANCED (Level 3)

Grade	Year	White	African Amer	Hispanic	Econ Disadv	Special Educ	LEP	At Risk	Migrant	Male	Female	All	District	Number Tested (All Students)
3	2012			*	*		*	*		*		*	13.4	1
	2013			0.0	0.0		0.0	0.0		*	*	0.0	17.4	8
	2014			25.0	25.0		25.0	25.0		*	*	25.0	17.6	8
4	2012												13.0	0
	2013			0.0	*		*	*		0.0		0.0	13.4	6
	2014			*	*		*	*		*	*	*	12.5	4
5	2012												12.1	0
	2013			*	*		*	*			*	*	11.6	2
	2014			*	*		*	*		*		*	15.8	1
3-5	2012			*	*		*	*		*		*	12.9	1
	2013			0.0	0.0		0.0	0.0		0.0	*	0.0	14.6	16
	2014			23.1	23.1		23.1	23.1		0.0	*	23.1	15.4	13

NUMBER TESTED IN GRADE 3-5													
2012			1	1		1	1		1		1		14,102
2013			16	14		14	15		11	5	16		13,810
2014			13	13		13	13		8	5	13		14,654

AVERAGE PERCENTAGE OF ITEMS CORRECT BY REPORTING CATEGORY

Grade	Year	REPORTING CATEGORY		
		1. Understanding Across Genres	2. Understanding/Analysis of Literary Texts	3. Understanding/Analysis of Informational Texts
3	2012	*	*	*
	2013	45.8	61.1	64.8
	2014	60.4	48.6	44.5
4	2012			
	2013	61.7	74.1	50.0
	2014	*	*	*
5	2012			
	2013	*	*	*
	2014	*	*	*
3-5	2012	*	*	*
	2013	53.5	65.9	59.3
	2014	64.9	54.1	55.0

PERCENTAGE SATISFACTORY (Levels 2 or 3)

Grade	Year	White	African Amer	Hispanic	Econ Disadv	Special Educ	LEP	At Risk	Migrant	Male	Female	All	District	Number Tested (All Students)
4	2012												68.9	0
	2013			50.0	*		*	*		50.0		50.0	62.2	6
	2014			85.7	83.3		85.7	85.7		*	*	85.7	65.6	7

NUMBER TESTED IN GRADE 4														
2012														4,905
2013			6	5			4	5		6		6		4,958
2014			7	6			7	7		3	4	7		4,841

NUMBER UNSATISFACTORY (Level 1)

Grade	Year	White	African Amer	Hispanic	Econ Disadv	Special Educ	LEP	At Risk	Migrant	Male	Female	All	District	Number Tested (All Students)
4	2012												1,524	0
	2013			3	*		*	*		3		3	1,876	6
	2014			1	1		1	1		*	*	1	1,667	7

NUMBER TESTED IN GRADE 4														
2012														4,905
2013			6	5			4	5		6		6		4,958
2014			7	6			7	7		3	4	7		4,841

PERCENTAGE ADVANCED (Level 3)

Grade	Year	White	African Amer	Hispanic	Econ Disadv	Special Educ	LEP	At Risk	Migrant	Male	Female	All	District	Number Tested (All Students)
4	2012													0
	2013			16.7	*		*	*		16.7		16.7	3.6	6
	2014			0.0	0.0		0.0	0.0		*	*	0.0	5.9	7

NUMBER TESTED IN GRADE 4														
2012														4,905
2013			6	5			4	5		6		6		4,958
2014			7	6			7	7		3	4	7		4,841

AVERAGE PERCENTAGE OF ITEMS CORRECT BY REPORTING CATEGORY

Grade	Year	REPORTING CATEGORY			
		1. Composition ¹ Personal Narrative	1. Composition ¹ Expository	2. Revision	3. Editing
4	2012				
	2013	4.5	3.2	68.5	74.6
	2014	4.4	3.9	69.8	72.9

¹Average score points (range 0-8). A STAAR composition is rated twice on a scale of 1 to 4, and the ratings are summed to determine score points for the composition. Score point scale: 0=Non-scorable; 2=Very Limited; 3=between Very Limited and Basic; 4=Basic; 5=between Basic and Satisfactory; 6=Satisfactory; 7=between Satisfactory and Accomplished; 8=Accomplished

PERCENTAGE SATISFACTORY (Levels 2 or 3)

Grade	Year	White	African Amer	Hispanic	Econ Disadv	Special Educ	LEP	At Risk	Migrant	Male	Female	All	District	Number Tested (All Students)
3	2012		*		*	*		*		*	*	*	54.7	3
	2013		*	*	*	*	*	*		*	*	*	67.5	2
	2014		*	*	83.3	83.3	*	*		*	*	83.3	63.3	6
4	2012		46.7	*	40.0	47.1	*	38.5		60.0	28.6	47.1	58.0	17
	2013		*	*	*	*	*	*		*	*	*	60.2	5
	2014		*	*	71.4	71.4	*	71.4		66.7	*	71.4	62.9	7
5	2012	*	71.4		71.4	62.5		57.1		*	*	62.5	67.0	8
	2013		91.7	*	93.8	93.8	*	90.0		85.7	100.0	93.8	86.5	16
	2014		*	*	*	*	*	*		*	*	*	86.3	5
3-5	2012	*	52.0	*	48.0	50.0	*	45.5		52.9	45.5	50.0	61.0	28
	2013		93.8	100.0	95.5	95.7	*	92.9		90.0	100.0	95.7	73.4	23
	2014		84.6	*	83.3	83.3	*	80.0		83.3	83.3	83.3	73.2	18

NUMBER TESTED IN GRADES 3-5													
2012	1	25	2	25	28	2	22		17	11	28	1,384	
2013		16	6	22	23	5	14		10	13	23	1,434	
2014		13	5	18	18	5	15		12	6	18	1,362	

NUMBER UNSATISFACTORY (Level 1)

Grade	Year	White	African Amer	Hispanic	Econ Disadv	Special Educ	LEP	At Risk	Migrant	Male	Female	All	District	Number Tested (All Students)
3	2012		*		*	*		*		*	*	*	149	3
	2013		*	*	*	*	*	*		*	*	*	114	2
	2014		*	*	1	1	*	*		*	*	1	114	6
4	2012		8	*	9	9	*	8		4	5	9	201	17
	2013		*	*	*	*	*	*		*	*	*	184	5
	2014		*	*	2	2	*	2		2	*	2	170	7
5	2012	*	2		2	3		3		*	*	3	190	8
	2013		1	*	1	1	*	1		1	0	1	84	16
	2014		*	*	*	*	*	*		*	*	*	81	5
3-5	2012	*	12	*	13	14	*	12		8	6	14	540	28
	2013		1	0	1	1	*	1		1	0	1	382	23
	2014		2	*	3	3	*	3		2	1	3	365	18

NUMBER TESTED IN GRADES 3-5													
2012	1	25	2	25	28	2	22		17	11	28	1,384	
2013		16	6	22	23	5	14		10	13	23	1,434	
2014		13	5	18	18	5	15		12	6	18	1,362	

PERCENTAGE ADVANCED (Level 3)

Grade	Year	White	African Amer	Hispanic	Econ Disadv	Special Educ	LEP	At Risk	Migrant	Male	Female	All	District	Number Tested (All Students)
3	2012		*		*	*		*		*	*	*	3.3	3
	2013		*	*	*	*	*	*		*	*	*	4.3	2
	2014		*	*	0.0	0.0	*	*		*	*	0.0	4.8	6
4	2012		6.7	*	0.0	5.9	*	7.7		0.0	14.3	5.9	3.3	17
	2013		*	*	*	*	*	*		*	*	*	3.5	5
	2014		*	*	0.0	0.0	*	0.0		0.0	*	0.0	6.3	7
5	2012	*	0.0		0.0	0.0		0.0		*	*	0.0	4.9	8
	2013		8.3	*	6.3	6.3	*	10.0		0.0	11.1	6.3	7.4	16
	2014		*	*	*	*	*	*		*	*	*	10.3	5
3-5	2012	*	8.0	*	4.0	7.1	*	9.1		0.0	18.2	7.1	4.0	28
	2013		18.8	16.7	18.2	17.4	*	21.4		10.0	23.1	17.4	5.4	23
	2014		7.7	*	5.6	5.6	*	0.0		0.0	16.7	5.6	7.7	18

NUMBER TESTED IN GRADE 3-5													
2012	1	25	2	25	28	2	22		17	11	28	1,384	
2013		16	6	22	23	5	14		10	13	23	1,434	
2014		13	5	18	18	5	15		12	6	18	1,362	

AVERAGE PERCENTAGE OF ITEMS CORRECT BY REPORTING CATEGORY

Grade	Year	REPORTING CATEGORY		
		1. Understanding Across Genres (GR 3-5) 1. Understanding/Analysis Across Genres (GR 6-8)	2. Understanding/Analysis of Literary Texts	3. Understanding/Analysis of Informational Texts
3	2012	*	*	*
	2013	*	*	*
	2014	53.3	71.4	48.7
4	2012	54.4	58.4	51.6
	2013	*	*	*
	2014	39.3	60.2	50.5
5	2012	51.6	55.8	34.8
	2013	53.1	58.8	52.7
	2014	*	*	*
3-5	2012	51.3	57.3	45.9
	2013	55.1	64.2	58.4
	2014	52.5	67.2	54.2

PERCENTAGE SATISFACTORY (Levels 2 or 3)

Grade	Year	White	African Amer	Hispanic	Econ Disadv	Special Educ	LEP	At Risk	Migrant	Male	Female	All	District	Number Tested (All Students)
4	2012		60.0	*	66.7	64.7	*	69.2		70.0	57.1	64.7	57.5	17
	2013		*	*	*	83.3	*	*		*	*	83.3	48.9	6
	2014		*	*	42.9	42.9	*	42.9		33.3	*	42.9	47.7	7

NUMBER TESTED IN GRADE 4													
2012		15	2	15	17	2	13		10	7	17	475	
2013		3	2	5	6	2	3		3	3	6	452	
2014		5	2	7	7	2	7		6	1	7	449	

NUMBER UNSATISFACTORY (Level 1)

Grade	Year	White	African Amer	Hispanic	Econ Disadv	Special Educ	LEP	At Risk	Migrant	Male	Female	All	District	Number Tested (All Students)
4	2012		6	*	5	6	*	4		3	3	6	202	17
	2013		*	*	*	1	*	*		*	*	1	231	6
	2014		*	*	4	4	*	4		4	*	4	235	7

NUMBER TESTED IN GRADE 4													
2012		15	2	15	17	2	13		10	7	17	475	
2013		3	2	5	6	2	3		3	3	6	452	
2014		5	2	7	7	2	7		6	1	7	449	

PERCENTAGE ADVANCED (Level 3)

Grade	Year	White	African Amer	Hispanic	Econ Disadv	Special Educ	LEP	At Risk	Migrant	Male	Female	All	District	Number Tested (All Students)
4	2012		6.7	*	6.7	11.8	*	15.4		10.0	14.3	11.8	5.3	17
	2013		*	*	*	33.3	*	*		*	*	33.3	8.6	6
	2014		*	*	14.3	14.3	*	14.3		16.7	*	14.3	8.5	7

NUMBER TESTED IN GRADE 4													
2012		15	2	15	17	2	13		10	7	17	475	
2013		3	2	5	6	2	3		3	3	6	452	
2014		5	2	7	7	2	7		6	1	7	449	

AVERAGE PERCENTAGE OF ITEMS CORRECT BY REPORTING CATEGORY

Grade	Year	REPORTING CATEGORY		
		1. Composition ¹ GR 4: Personal Narrative GR 7: Expository	2. Revision	3. Editing
4	2012	1.4	49.6	45.9
	2013	2.5	78.6	65.6
	2014	2.6	57.1	51.4

¹Average score points (range 0-6). A STAAR M composition is rated twice on a scale of 0 to 3, and the ratings are summed to determine score points for the composition. Score point scale: 0=Non-scorable; 2=Very Limited; 3=between Very Limited and Basic; 4=Basic; 5=between Basic and Satisfactory; 6=Satisfactory

PERCENTAGE SATISFACTORY (Levels 2 or 3)

Grade	Year	White	African Amer	Hispanic	Econ Disadv	Special Educ	LEP	At Risk	Migrant	Male	Female	All	District	Number Tested (All Students)
3	2012		*		*	*		*		*		*	52.0	2
	2013		*	*	*	*	*	*		*	*	*	64.4	2
	2014		*	*	66.7	66.7	*	*		*	*	66.7	64.2	6
4	2012		42.9		41.7	42.9		40.0		37.5	50.0	42.9	61.2	14
	2013		*	*	*	*	*	*		*	*	*	61.7	5
	2014		*	*	85.7	85.7	*	85.7		83.3	*	85.7	70.3	7
5	2012	*	33.3		33.3	28.6		*		*	*	28.6	60.6	7
	2013		75.0	*	75.0	75.0	*	80.0		100.0	55.6	75.0	77.2	16
	2014		*	*	*	*	*	*		*	*	*	79.1	5
3-5	2012	*	40.9		40.0	39.1		31.3		35.7	44.4	39.1	58.7	23
	2013		81.3	83.3	81.8	82.6	*	85.7		100.0	69.2	82.6	69.1	23
	2014		76.9	*	83.3	83.3	*	86.7		83.3	83.3	83.3	72.7	18

NUMBER TESTED IN GRADES 3-5													
2012	1	22		20	23		16		14	9	23	1,354	
2013		16	6	22	23	5	14		10	13	23	1,433	
2014		13	5	18	18	5	15		12	6	18	1,378	

NUMBER UNSATISFACTORY (Level 1)

Grade	Year	White	African Amer	Hispanic	Econ Disadv	Special Educ	LEP	At Risk	Migrant	Male	Female	All	District	Number Tested (All Students)
3	2012		*		*	*		*		*		*	157	2
	2013		*	*	*	*	*	*		*	*	*	120	2
	2014		*	*	2	2	*	*		*	*	2	113	6
4	2012		8		7	8		6		5	3	8	182	14
	2013		*	*	*	*	*	*		*	*	*	181	5
	2014		*	*	1	1	*	1		1	*	1	138	7
5	2012	*	4		4	5		*		*	*	5	220	7
	2013		3	*	4	4	*	2		0	4	4	142	16
	2014		*	*	*	*	*	*		*	*	*	125	5
3-5	2012	*	13		12	14		11		9	5	14	559	23
	2013		3	1	4	4	*	2		0	4	4	443	23
	2014		3	*	3	3	*	2		2	1	3	376	18

NUMBER TESTED IN GRADES 3-5													
2012	1	22		20	23		16		14	9	23	1,354	
2013		16	6	22	23	5	14		10	13	23	1,433	
2014		13	5	18	18	5	15		12	6	18	1,378	

PERCENTAGE ADVANCED (Level 3)

Grade	Year	White	African Amer	Hispanic	Econ Disadv	Special Educ	LEP	At Risk	Migrant	Male	Female	All	District	Number Tested (All Students)
3	2012		*		*	*		*		*		*	4.0	2
	2013		*	*	*	*	*	*		*	*	*	7.4	2
	2014		*	*	0.0	0.0	*	*		*	*	0.0	7.6	6
4	2012		0.0		0.0	0.0		0.0		0.0	0.0	0.0	1.7	14
	2013		*	*	*	*	*	*		*	*	*	4.7	5
	2014		*	*	0.0	0.0	*	0.0		0.0	*	0.0	6.5	7
5	2012	*	0.0		0.0	0.0		*		*	*	0.0	0.7	7
	2013		0.0	*	0.0	0.0	*	0.0		0.0	0.0	0.0	3.9	16
	2014		*	*	*	*	*	*		*	*	*	6.0	5
3-5	2012	*	0.0		0.0	0.0		0.0		0.0	0.0	0.0	1.8	23
	2013		0.0	0.0	0.0	0.0	*	0.0		0.0	0.0	0.0	5.0	23
	2014		0.0	*	0.0	0.0	*	0.0		0.0	0.0	0.0	6.5	18

NUMBER TESTED IN GRADE 3-5													
2012	1	22		20	23		16		14	9	23	1,354	
2013		16	6	22	23	5	14		10	13	23	1,433	
2014		13	5	18	18	5	15		12	6	18	1,378	

AVERAGE PERCENTAGE OF ITEMS CORRECT BY REPORTING CATEGORY

Grade	Year	REPORTING CATEGORY				
		1. Numbers, Operations, and Quantitative Reasoning	2. Patterns, Relationships, and Algebraic Reasoning	3. Geometry and Spatial Reasoning	4. Measurement	5. Probability and Statistics
3	2012	*	*	*	*	*
	2013	*	*	*	*	*
	2014	65.4	72.2	66.7	50.0	56.7
4	2012	39.0	41.4	37.1	23.8	53.6
	2013	*	*	*	*	*
	2014	69.2	68.6	40.0	42.9	50.0
5	2012	33.7	40.0	35.7	40.5	36.5
	2013	57.6	45.0	53.1	58.3	41.0
	2014	*	*	*	*	*
3-5	2012	39.0	41.0	37.2	28.3	48.1
	2013	64.5	52.8	53.2	57.2	49.4
	2014	66.2	61.9	51.7	51.9	55.6

PERCENTAGE AT OR ABOVE THE 40th PERCENTILE on the ITBS

Grade	Year	READING TOTAL (**READING PROFILE TOTAL)				
		At Risk	Not At Risk	All	District	Number Tested (All Students)
K**	2012	100.0	87.1	87.5	62.2	32
	2013	85.7	60.9	64.2	60.8	53
	2014	42.9	90.7	84.0	60.7	50
1	2012	100.0	58.3	60.0	55.4	25
	2013	70.0	82.0	80.0	55.0	60
	2014	50.0	75.0	70.7	47.2	58
2	2012	26.7	53.8	39.3	49.8	28
	2013	16.7	30.8	26.3	50.2	38
	2014	11.8	65.8	49.1	44.4	55
K-2	2012	35.3	70.6	63.5	55.8	53
	2013	58.3	62.5	61.8	56.7	151
	2014	31.7	80.8	71.4	53.1	163
# Tested (GR K-2)	2012	17	68	85	21,034	
	2013	36	168	204	28,878	
	2014	41	172	213	28,063	

Grade	Year	MATHEMATICS TOTAL (**MATHEMATICS)				
		At Risk	Not At Risk	All	District	Number Tested (All Students)
K**	2012	*	71.9	69.7	55.1	33
	2013	13.6	42.3	33.8	55.1	74
	2014	32.0	83.7	64.7	55.0	68
1	2012	*	72.0	71.4	50.7	28
	2013	43.8	76.5	68.7	52.0	67
	2014	44.4	69.4	60.5	46.0	76
2	2012	40.0	61.5	50.0	57.9	28
	2013	26.5	53.1	39.4	56.2	66
	2014	17.9	53.8	38.8	52.0	67
K-2	2012	42.1	70.0	64.0	54.5	89
	2013	26.4	57.8	46.9	54.4	207
	2014	31.3	69.5	55.0	51.0	211
# Tested (GR K-2)	2012	19	70	89	40,477	
	2013	72	135	207	40,966	
	2014	80	131	211	40,233	

PERCENTAGE AT OR ABOVE THE 40th PERCENTILE

Grade	Year	White	African Amer	Hispanic	Econ Disadv	Special Educ	LEP	At Risk	Migrant	Male	Female	All	District	Number Tested (All Students)
K**	2012		87.1	*	87.5		*	*		88.2	86.7	87.5	62.2	32
	2013		62.0	*	66.0		*	85.7		62.5	65.5	64.2	60.8	53
	2014		82.6	*	83.0	*		42.9		79.2	88.5	84.0	60.7	50
1	2012		60.0		60.0	*		*		53.8	66.7	60.0	55.4	25
	2013		78.6	*	80.0	*		70.0		76.5	84.6	80.0	55.0	60
	2014		68.6	*	69.2	*	*	50.0		67.9	73.3	70.7	47.2	58
2	2012		38.5	*	39.3	*	*	26.7		43.8	33.3	39.3	49.8	28
	2013	*	25.7	*	27.0	*		16.7		25.0	28.6	26.3	50.2	38
	2014		49.0	*	51.0			11.8		63.0	35.7	49.1	44.4	55
1-2	2012		49.0	*	49.1	*	*	31.3		48.3	50.0	49.1	52.7	53
	2013	*	59.6	75.0	61.8	0.0	*	51.7		57.3	65.2	60.9	55.4	151
	2014		66.2	81.8	67.3	*	*	29.4		69.6	65.5	67.5	50.6	163
# Tested (GR K-2)	2012		51	2	53	3	1	16		29	24	53	14,095	
	2013	1	141	8	144	7	1	29		82	69	151	21,640	
	2014		148	11	150	3	1	34		79	84	163	21,214	

**Kindergarten subscore is Reading Profile Total; no Reading Total subscore available.

NUMBER AT OR ABOVE THE 80th PERCENTILE

Grade	Year	White	African Amer	Hispanic	Econ Disadv	Special Educ	LEP	At Risk	Migrant	Male	Female	All	District	Number Tested (All Students)
K**	2012		19	*	19		*	*		11	8	19	2,027	32
	2013		8	*	6		*	0		3	5	8	2,108	53
	2014		30	*	30	*		2		14	19	33	1,938	50
1	2012		11		11	*		*		5	6	11	1,963	25
	2013		25	*	28	*		3		15	13	28	2,017	60
	2014		25	*	27	*	*	5		14	16	30	1,561	58
2	2012		0	*	0	*	*	0		0	0	0	1,017	28
	2013	*	5	*	5	*		0		1	4	5	1,045	38
	2014		5	*	6			0		3	3	6	950	55
1-2	2012		11	*	11	*	*	1		5	6	11	2,981	53
	2013	*	38	3	39	0	*	3		19	22	41	5,171	151
	2014		60	7	63	*	*	7		31	38	69	4,449	163
# Tested (GR K-2)	2012		51	2	53	3	1	16		29	24	53	14,095	
	2013	1	141	8	144	7	1	29		82	69	151	21,640	
	2014		148	11	150	3	1	34		79	84	163	21,214	

**Kindergarten subscore is Reading Profile Total; no Reading Total subscore available.

PERCENTAGE AT OR ABOVE THE 40th PERCENTILE

Grade	Year	White	African Amer	Hispanic	Econ Disadv	Special Educ	LEP	At Risk	Migrant	Male	Female	All	District	Number Tested (All Students)
K**	2012		71.9	*	69.7		*	*		70.6	68.8	69.7	55.1	33
	2013		38.9	20.0	33.8		6.7	13.6		25.0	44.1	33.8	55.1	74
	2014		80.4	28.6	63.1	*	16.7	32.0		57.1	72.7	64.7	55.0	68
1	2012		71.4		71.4	*		*		73.3	69.2	71.4	50.7	28
	2013		73.2	45.5	69.7	*	28.6	43.8		70.3	66.7	68.7	52.0	67
	2014		66.7	43.5	60.0	*	38.9	44.4		55.8	66.7	60.5	46.0	76
2	2012		50.0	*	50.0	*	*	40.0		37.5	66.7	50.0	57.9	28
	2013	*	42.3	16.7	40.0	*	22.2	26.5		37.8	41.4	39.4	56.2	66
	2014		39.2	40.0	41.3		33.3	17.9		45.5	32.4	38.8	52.0	67
K-2	2012		65.1	*	64.0	33.3	*	42.1		60.4	68.3	64.0	54.5	89
	2013	*	51.9	25.6	47.7	14.3	16.1	26.4		43.9	50.5	46.9	54.4	207
	2014		61.5	37.3	55.1	*	29.2	31.3		53.2	57.0	55.0	51.0	211
# Tested (GR K-2)	2012		86	3	89	6	2	19		48	41	89	40,477	
	2013	1	162	43	199	7	31	72		114	93	207	40,966	
	2014		148	59	198	3	48	80		111	100	211	40,233	

**Kindergarten test is Mathematics; no Mathematics Total score available.

NUMBER AT OR ABOVE THE 80th PERCENTILE

Grade	Year	White	African Amer	Hispanic	Econ Disadv	Special Educ	LEP	At Risk	Migrant	Male	Female	All	District	Number Tested (All Students)
K**	2012		9	*	9		*	*		5	4	9	2,472	33
	2013		2	0	2		0	0		1	1	2	2,594	74
	2014		17	3	17	*	0	1		11	9	20	2,598	68
1	2012		13		13	*		*		5	8	13	2,473	28
	2013		18	2	20	*	0	1		10	10	20	2,609	67
	2014		16	2	17	*	0	2		9	11	20	2,166	76
2	2012		0	*	0	*	*	0		0	0	0	2,843	28
	2013	*	6	0	6	*	0	0		4	2	6	2,626	66
	2014		4	1	5		1	1		4	1	5	2,408	67
K-2	2012		22	*	22	0	*	1		10	12	22	7,788	89
	2013	*	26	2	28	0	0	1		15	13	28	7,829	207
	2014		37	6	39	*	1	4		24	21	45	7,172	211
# Tested (GR K-2)	2012		86	3	89	6	2	19		48	41	89	40,477	
	2013	1	162	43	199	7	31	72		114	93	207	40,966	
	2014		148	59	198	3	48	80		111	100	211	40,233	

**Kindergarten test is Mathematics; no Mathematics Total score available.

PERCENTAGE AT OR ABOVE THE 40th PERCENTILE

Grade	Year	White	African Amer	Hispanic	Econ Disadv	Special Educ	LEP	At Risk	Migrant	Male	Female	All	District	Number Tested (All Students)
1	2012		88.0		88.0	*		*		92.3	83.3	88.0	62.5	25
	2013		78.6	81.8	80.3	*	85.7	68.8		81.1	76.7	79.1	63.6	67
	2014		70.6	47.8	62.9	*	44.4	44.4		53.5	78.8	64.5	58.6	76
2	2012		46.2	*	42.9	*	*	33.3		31.3	58.3	42.9	63.6	28
	2013	*	48.1	25.0	44.6	*	22.2	32.4		45.9	44.8	45.5	60.6	66
	2014		49.0	60.0	54.0		58.3	32.1		57.6	44.1	50.7	59.2	67
1-2	2012		66.7	*	64.2	*	*	41.2		58.6	70.8	64.2	63.0	53
	2013	*	63.9	52.2	62.6	14.3	50.0	44.0		63.5	61.0	62.4	62.1	133
	2014		59.8	52.6	58.6	*	50.0	38.2		55.3	61.2	58.0	58.9	143
# Tested (GR 1-2)	2012		51	2	53	3	1	17		29	24	53	26,880	
	2013	1	108	23	131	7	16	50		74	59	133	27,003	
	2014		102	38	133	1	30	55		76	67	143	26,955	

NUMBER AT OR ABOVE THE 80th PERCENTILE

Grade	Year	White	African Amer	Hispanic	Econ Disadv	Special Educ	LEP	At Risk	Migrant	Male	Female	All	District	Number Tested (All Students)
1	2012		9		9	*		*		4	5	9	4,060	25
	2013		24	4	28	*	2	5		15	13	28	4,150	67
	2014		21	5	24	*	3	6		13	14	27	3,708	76
2	2012		2	*	2	*	*	0		0	2	2	3,820	28
	2013	*	7	0	7	*	0	0		2	5	7	3,436	66
	2014		11	2	13		1	2		8	5	13	3,288	67
1-2	2012		11	*	11	*	*	1		4	7	11	7,880	53
	2013	*	31	4	35	0	2	5		17	18	35	7,586	133
	2014		32	7	37	*	4	8		21	19	40	6,996	143
# Tested (GR 1-2)	2012		51	2	53	3	1	17		29	24	53	26,880	
	2013	1	108	23	131	7	16	50		74	59	133	27,003	
	2014		102	38	133	1	30	55		76	67	143	26,955	

PERCENTAGE AT OR ABOVE THE 40th PERCENTILE

Grade	Year	White	African Amer	Hispanic	Econ Disadv	Special Educ	LEP	At Risk	Migrant	Male	Female	All	District	Number Tested (All Students)
K	2012												89.9	
	2013			80.0	80.0		78.6	78.6		76.9	*	80.0	89.7	15
	2014			88.9	88.9		88.9	88.9		80.0	100.0	88.9	88.6	18
1	2012												89.2	
	2013			90.0	90.0		88.9	90.0		*	*	90.0	87.6	10
	2014			83.3	83.3		82.4	82.4		80.0	*	83.3	84.6	18
2	2012												93.3	
	2013			66.7	66.7	*	66.7	66.7		*	*	66.7	93.6	9
	2014			83.3	83.3		83.3	83.3		66.7	100.0	83.3	91.8	12
K-2	2012												90.8	
	2013			79.4	79.4	*	78.1	78.8		77.3	83.3	79.4	90.3	34
	2014			85.4	85.4		85.1	85.1		77.4	100.0	85.4	88.2	48
# Tested (GR K-2)	2012												18,911	
	2013			34	34	2	32	33		22	12	34	18,629	
	2014			48	48		47	47		31	17	48	18,008	

NUMBER AT OR ABOVE THE 80th PERCENTILE

Grade	Year	White	African Amer	Hispanic	Econ Disadv	Special Educ	LEP	At Risk	Migrant	Male	Female	All	District	Number Tested (All Students)
K	2012												3,679	0
	2013			7	7		7	7		5	*	7	3,798	15
	2014			7	7		7	7		4	3	7	3,313	18
1	2012												2,437	0
	2013			0	0		0	0		*	*	0	2,394	10
	2014			5	5		5	5		4	*	5	2,123	18
2	2012												2,934	0
	2013			2	2	*	2	2		*	*	2	2,899	9
	2014			4	4		4	4		2	2	4	2,596	12
K-2	2012												9,050	0
	2013			9	9	*	9	9		5	4	9	9,091	34
	2014			16	16		16	16		10	6	16	8,032	48
# Tested (GR K-2)	2012												18,911	
	2013			34	34	2	32	33		22	12	34	18,629	
	2014			48	48		47	47		31	17	48	18,008	

PERFORMANCE IN 2014

Grade 2013-14 (N Rated)	Domain:	Listening		Speaking		Writing		Reading		Composite	
	2014 Level	N	%	N	%	N	%	N	%	N	%
KN (18)	Beginning	8	44.4	16	88.9	18	100.0	18	100.0	18	100.0
	Intermediate	10	55.6	2	11.1	0	0.0	0	0.0	0	0.0
	Advanced	0	0.0	0	0.0	0	0.0	0	0.0	0	0.0
	Advanced High	0	0.0	0	0.0	0	0.0	0	0.0	0	0.0
1 (18)	Beginning	1	5.6	1	5.6	1	5.6	1	5.6	1	5.6
	Intermediate	4	22.2	4	22.2	4	22.2	2	11.1	2	11.1
	Advanced	9	50.0	9	50.0	9	50.0	8	44.4	8	44.4
	Advanced High	4	22.2	4	22.2	4	22.2	7	38.9	7	38.9
2 (12)	Beginning	0	0.0	1	8.3	1	8.3	6	50.0	1	8.3
	Intermediate	6	50.0	9	75.0	9	75.0	5	41.7	10	83.3
	Advanced	6	50.0	2	16.7	2	16.7	1	8.3	1	8.3
	Advanced High	0	0.0	0	0.0	0	0.0	0	0.0	0	0.0
3 (9)	Beginning	0	0.0	0	0.0	4	44.4	4	44.4	2	22.2
	Intermediate	6	66.7	7	77.8	3	33.3	2	22.2	4	44.4
	Advanced	3	33.3	2	22.2	2	22.2	0	0.0	2	22.2
	Advanced High	0	0.0	0	0.0	0	0.0	3	33.3	1	11.1
4 (11)	Beginning	0	0.0	0	0.0	1	9.1	1	9.1	1	9.1
	Intermediate	0	0.0	0	0.0	1	9.1	5	45.5	1	9.1
	Advanced	3	27.3	3	27.3	4	36.4	5	45.5	6	54.5
	Advanced High	8	72.7	8	72.7	5	45.5	0	0.0	3	27.3

**PROGRESSION FROM
2013 TO 2014**


Number Rated Both Years N (%) Progressed	2014 Level	2013 Level			
		Beg	Int	Adv	Adv High
-	Beginning	-			
	Intermediate	-	-		
	Advanced	-	-	-	
	Advanced High	-	-	-	
18 17 (94.4%)	Beginning	1			
	Intermediate	2	0		
	Advanced	8	0	0	
	Advanced High	7	0	0	
12 2 (16.7%)	Beginning	1			
	Intermediate	1	9		
	Advanced	1	0	0	
	Advanced High	0	0	0	
9 2 (22.2%)	Beginning	2			
	Intermediate	1	3		
	Advanced	0	0	2	
	Advanced High	0	0	1	
11 5 (45.5%)	Beginning	1			
	Intermediate	0	1		
	Advanced	1	1	4	
	Advanced High	0	0	3	

PERFORMANCE IN 2014

Grade 2013-14 (N Rated)	Domain:	Listening		Speaking		Writing		Reading		Composite	
	2014 Level	N	%	N	%	N	%	N	%	N	%
5 (11)	Beginning	0	0.0	0	0.0	0	0.0	1	9.1	0	0.0
	Intermediate	0	0.0	3	27.3	3	27.3	2	18.2	2	18.2
	Advanced	5	45.5	0	0.0	2	18.2	7	63.6	4	36.4
	Advanced High	6	54.5	8	72.7	6	54.5	1	9.1	5	45.5
ALL (79)	Beginning	9	11.4	18	22.8	25	31.6	31	39.2	23	29.1
	Intermediate	26	32.9	25	31.6	20	25.3	16	20.3	19	24.1
	Advanced	26	32.9	16	20.3	19	24.1	21	26.6	21	26.6
	Advanced High	18	22.8	20	25.3	15	19.0	11	13.9	16	20.3

**PROGRESSION FROM
2013 TO 2014**

Number Rated Both Years N (%) Progressed	2014 Level	2013 Level			
		Beg	Int	Adv	Adv High
9 8 (88.9%)	Beginning	0			
	Intermediate	1	1		
	Advanced	0	3	0	
	Advanced High	0	1	3	
59 34 (57.6%)	Beginning	5			
	Intermediate	5	14		
	Advanced	10	4	6	
	Advanced High	7	1	7	

 Indicates students who progressed at least one level from 2013 to 2014.

SEMESTER 1 TESTS

Number Tested	Averages				% Passing		District % Passing	
	% Items Correct	Scale Score	Course Mark	Course Mark (no ACP)	ACP	Course	ACP	Course

GRADE 1 ART

75	73.2	82.1			94.7		84.8	
----	------	------	--	--	------	--	------	--

GRADE 1 MATHEMATICS

79	82.1	84.2			86.1		88.8	
----	------	------	--	--	------	--	------	--

GRADE 1 READING

62	88.9	89.9			95.2		95.2	
----	------	------	--	--	------	--	------	--

GRADE 1 SPANISH READING

17	86.6	87.8			94.1		97.9	
----	------	------	--	--	------	--	------	--

GRADE 2 MATHEMATICS

67	68.1	81.6	82.6		86.6	97.0	80.4	91.8
----	------	------	------	--	------	------	------	------

GRADE 2 MUSIC

64		73.8	80.2		75.0	100.0	64.3	100.0
----	--	------	------	--	------	-------	------	-------

GRADE 2 READING

56	71.2	85.4	78.3		89.3	76.8	73.6	87.7
----	------	------	------	--	------	------	------	------

GRADE 2 SPANISH READING

12	58.8	72.6	82.2		50.0	100.0	70.5	92.6
----	------	------	------	--	------	-------	------	------

GRADE 3 LANGUAGE ARTS

56	55.7	74.4	83.1		67.9	92.9	57.8	91.7
----	------	------	------	--	------	------	------	------

GRADE 3 MATHEMATICS

64	42.9	67.0	73.8		43.8	64.1	51.5	88.5
----	------	------	------	--	------	------	------	------

GRADE 3 PHYSICAL EDUCATION

64		80.5	89.2		87.5	100.0	81.1	100.0
----	--	------	------	--	------	-------	------	-------

SEMESTER 2 TESTS

Number Tested	Averages				% Passing		District % Passing	
	% Items Correct	Scale Score	Course Mark	Course Mark (no ACP)	ACP	Course	ACP	Course

GRADE 1 ART

64		77.3			75.0		85.0	
----	--	------	--	--	------	--	------	--

GRADE 1 MATHEMATICS

79	83.7	84.7			88.6		87.1	
----	------	------	--	--	------	--	------	--

GRADE 1 READING

62	76.6	83.3			80.6		79.6	
----	------	------	--	--	------	--	------	--

GRADE 1 SPANISH READING

18	82.9	82.9			83.3		86.5	
----	------	------	--	--	------	--	------	--

GRADE 2 MATHEMATICS

65	51.3	70.8	82.1		55.4	89.2	75.6	91.8
----	------	------	------	--	------	------	------	------

GRADE 2 MUSIC

62		77.4	84.9		90.3	100.0	91.4	99.9
----	--	------	------	--	------	-------	------	------

GRADE 2 READING

51	76.8	84.5	77.6		86.3	66.7	65.3	86.6
----	------	------	------	--	------	------	------	------

GRADE 2 SPANISH READING

11	62.3	71.7	86.6		63.6	90.9	78.7	91.4
----	------	------	------	--	------	------	------	------

GRADE 3 LANGUAGE ARTS

44	68.7	75.9	79.8		68.2	79.5	63.0	90.0
----	------	------	------	--	------	------	------	------

GRADE 3 MATHEMATICS

52	44.9	64.9	69.0		25.0	53.8	55.5	87.5
----	------	------	------	--	------	------	------	------

GRADE 3 PHYSICAL EDUCATION

52		87.0	86.0		100.0	100.0	93.6	100.0
----	--	------	------	--	-------	-------	------	-------

SEMESTER 1 TESTS

Number Tested	Averages				% Passing		District % Passing	
	% Items Correct	Scale Score	Course Mark	Course Mark (no ACP)	ACP	Course	ACP	Course

GRADE 3 READING

56	47.0	65.4	75.0		35.7	67.9	55.3	87.8
----	------	------	------	--	------	------	------	------

GRADE 3 SCIENCE

57	53.7	69.1	78.2		57.9	84.2	53.2	96.7
----	------	------	------	--	------	------	------	------

GRADE 3 SOCIAL STUDIES

56	56.8	68.4	77.3		48.2	76.8	61.3	96.1
----	------	------	------	--	------	------	------	------

GRADE 3 SPANISH LANGUAGE ARTS

8	55.4	70.2			50.0		60.1	90.8
---	------	------	--	--	------	--	------	------

GRADE 3 SPANISH READING

8	42.7	68.2			25.0		53.0	90.5
---	------	------	--	--	------	--	------	------

GRADE 3 SPANISH SCIENCE

8	57.9	71.9	82.6		50.0	87.5	55.4	95.3
---	------	------	------	--	------	------	------	------

GRADE 3 SPANISH SOCIAL STUDIES

8	49.0	66.0	86.5		37.5	100.0	55.3	96.1
---	------	------	------	--	------	-------	------	------

GRADE 4 ART

54	55.2	76.9	84.2		85.2	100.0	77.4	99.9
----	------	------	------	--	------	-------	------	------

GRADE 4 LANGUAGE ARTS

48	59.8	73.2	78.4		66.7	87.5	57.7	91.1
----	------	------	------	--	------	------	------	------

GRADE 4 MATHEMATICS

55	43.0	68.9	77.6		52.7	92.7	55.0	89.0
----	------	------	------	--	------	------	------	------

GRADE 4 READING

48	63.6	75.7	75.1		75.0	77.1	54.2	89.7
----	------	------	------	--	------	------	------	------

SEMESTER 2 TESTS

Number Tested	Averages				% Passing		District % Passing	
	% Items Correct	Scale Score	Course Mark	Course Mark (no ACP)	ACP	Course	ACP	Course

GRADE 3 READING

43	58.7	72.5	74.2		51.2	58.1	56.4	86.4
----	------	------	------	--	------	------	------	------

GRADE 3 SCIENCE

43	56.3	70.9	76.2		55.8	74.4	56.3	95.5
----	------	------	------	--	------	------	------	------

GRADE 3 SOCIAL STUDIES

44	56.8	61.8	73.8		34.1	63.6	50.2	94.5
----	------	------	------	--	------	------	------	------

GRADE 3 SPANISH LANGUAGE ARTS

8	69.6	69.6	82.7		37.5	100.0	70.4	85.7
---	------	------	------	--	------	-------	------	------

GRADE 3 SPANISH READING

8	54.7	69.8	82.7		37.5	100.0	61.9	86.0
---	------	------	------	--	------	-------	------	------

GRADE 3 SPANISH SCIENCE

8	59.7	73.1	82.1		50.0	100.0	55.9	94.7
---	------	------	------	--	------	-------	------	------

GRADE 3 SPANISH SOCIAL STUDIES

8	51.4	65.3	80.6		37.5	100.0	53.1	94.5
---	------	------	------	--	------	-------	------	------

GRADE 4 ART

47		70.5	84.6		53.2	100.0	50.6	99.9
----	--	------	------	--	------	-------	------	------

GRADE 4 LANGUAGE ARTS

43	71.3	74.7	74.5		74.4	72.1	63.8	88.7
----	------	------	------	--	------	------	------	------

GRADE 4 MATHEMATICS

47	59.5	74.2	75.0		70.2	68.1	62.3	88.7
----	------	------	------	--	------	------	------	------

GRADE 4 READING

43	75.5	78.3	75.9		90.7	69.8	58.4	87.3
----	------	------	------	--	------	------	------	------

SEMESTER 1 TESTS

Number Tested	Averages				% Passing		District % Passing	
	% Items Correct	Scale Score	Course Mark	Course Mark (no ACP)	ACP	Course	ACP	Course

GRADE 4 SCIENCE

55	51.3	67.6	81.6		40.0	98.2	52.1	96.4
----	------	------	------	--	------	------	------	------

GRADE 4 SOCIAL STUDIES

55	40.2	64.8	82.4		34.5	98.2	37.8	95.9
----	------	------	------	--	------	------	------	------

GRADE 4 SPANISH LANGUAGE ARTS

7	66.0	73.1	79.0		57.1	100.0	60.4	89.4
---	------	------	------	--	------	-------	------	------

GRADE 4 SPANISH READING

5	*	*			*		53.6	*
---	---	---	--	--	---	--	------	---

GRADE 5 LANGUAGE ARTS

48	80.3	80.3	73.6		83.3	75.0	77.2	93.6
----	------	------	------	--	------	------	------	------

GRADE 5 MATHEMATICS

55	50.3	72.9	82.6		63.6	90.9	53.7	89.2
----	------	------	------	--	------	------	------	------

GRADE 5 MUSIC

54		76.6	79.5		83.3	96.3	66.5	99.9
----	--	------	------	--	------	------	------	------

GRADE 5 READING

55	73.3	73.3	72.1		65.5	66.0	62.9	90.8
----	------	------	------	--	------	------	------	------

GRADE 5 SCIENCE

52	55.7	70.5	83.1		57.7	96.2	50.8	94.3
----	------	------	------	--	------	------	------	------

GRADE 5 SOCIAL STUDIES

55	34.5	66.7	82.5		30.9	98.1	48.2	97.0
----	------	------	------	--	------	------	------	------

GRADE 5 SPANISH LANGUAGE ARTS

8	74.0	76.3	80.8		75.0	83.3	69.6	89.8
---	------	------	------	--	------	------	------	------

SEMESTER 2 TESTS

Number Tested	Averages				% Passing		District % Passing	
	% Items Correct	Scale Score	Course Mark	Course Mark (no ACP)	ACP	Course	ACP	Course

GRADE 4 SCIENCE

49	53.6	68.3	82.0		46.9	91.8	56.9	94.9
----	------	------	------	--	------	------	------	------

GRADE 4 SOCIAL STUDIES

49	42.2	66.7	81.4		36.7	98.0	38.7	94.8
----	------	------	------	--	------	------	------	------

GRADE 4 SPANISH LANGUAGE ARTS

6	74.6	74.6			66.7		66.4	84.6
---	------	------	--	--	------	--	------	------

GRADE 4 SPANISH READING

6	61.7	72.0			66.7		58.1	84.3
---	------	------	--	--	------	--	------	------

GRADE 5 LANGUAGE ARTS

39	67.3	71.2	73.2		66.7	76.9	69.6	94.1
----	------	------	------	--	------	------	------	------

GRADE 5 MATHEMATICS

47	53.1	72.9	86.9		59.6	97.9	59.7	90.2
----	------	------	------	--	------	------	------	------

GRADE 5 MUSIC

46		71.9	81.7		71.7	100.0	73.2	99.7
----	--	------	------	--	------	-------	------	------

GRADE 5 READING

46	64.0	73.7	74.1		63.0	84.6	63.1	90.0
----	------	------	------	--	------	------	------	------

GRADE 5 SCIENCE

46	65.6	69.7	79.5		56.5	91.3	63.6	93.2
----	------	------	------	--	------	------	------	------

GRADE 5 SOCIAL STUDIES

46	41.2	65.4	80.3		34.8	100.0	53.5	96.0
----	------	------	------	--	------	-------	------	------

GRADE 5 SPANISH LANGUAGE ARTS

7	68.5	72.2			57.1		64.1	87.2
---	------	------	--	--	------	--	------	------

SEMESTER 1 TESTS

Number Tested	Averages				% Passing		District % Passing	
	% Items Correct	Scale Score	Course Mark	Course Mark (no ACP)	ACP	Course	ACP	Course

GRADE 5 SPANISH READING

1	*	*			*		64.7	*
---	---	---	--	--	---	--	------	---

KINDERGARTEN MATHEMATICS

75	89.2	92.3			96.0		87.6	
----	------	------	--	--	------	--	------	--

KINDERGARTEN PHYSICAL EDUCATION

73		99.2			100.0		83.6	
----	--	------	--	--	-------	--	------	--

KINDERGARTEN READING

56	90.2	91.6			96.4		90.2	
----	------	------	--	--	------	--	------	--

KINDERGARTEN SPANISH READING

18	87.8	89.5			100.0		88.1	
----	------	------	--	--	-------	--	------	--

SEMESTER 2 TESTS

Number Tested	Averages				% Passing		District % Passing	
	% Items Correct	Scale Score	Course Mark	Course Mark (no ACP)	ACP	Course	ACP	Course

GRADE 5 SPANISH READING

1	*	*			*		63.7	*
---	---	---	--	--	---	--	------	---

KINDERGARTEN MATHEMATICS

64	80.6	87.1			93.8		82.0	
----	------	------	--	--	------	--	------	--

KINDERGARTEN PHYSICAL EDUCATION

71		96.6			100.0		94.5	
----	--	------	--	--	-------	--	------	--

KINDERGARTEN READING

52	93.9	93.9			96.2		93.2	
----	------	------	--	--	------	--	------	--

KINDERGARTEN SPANISH READING

16	95.2	95.2			100.0		94.3	
----	------	------	--	--	-------	--	------	--