

DATA PACKET

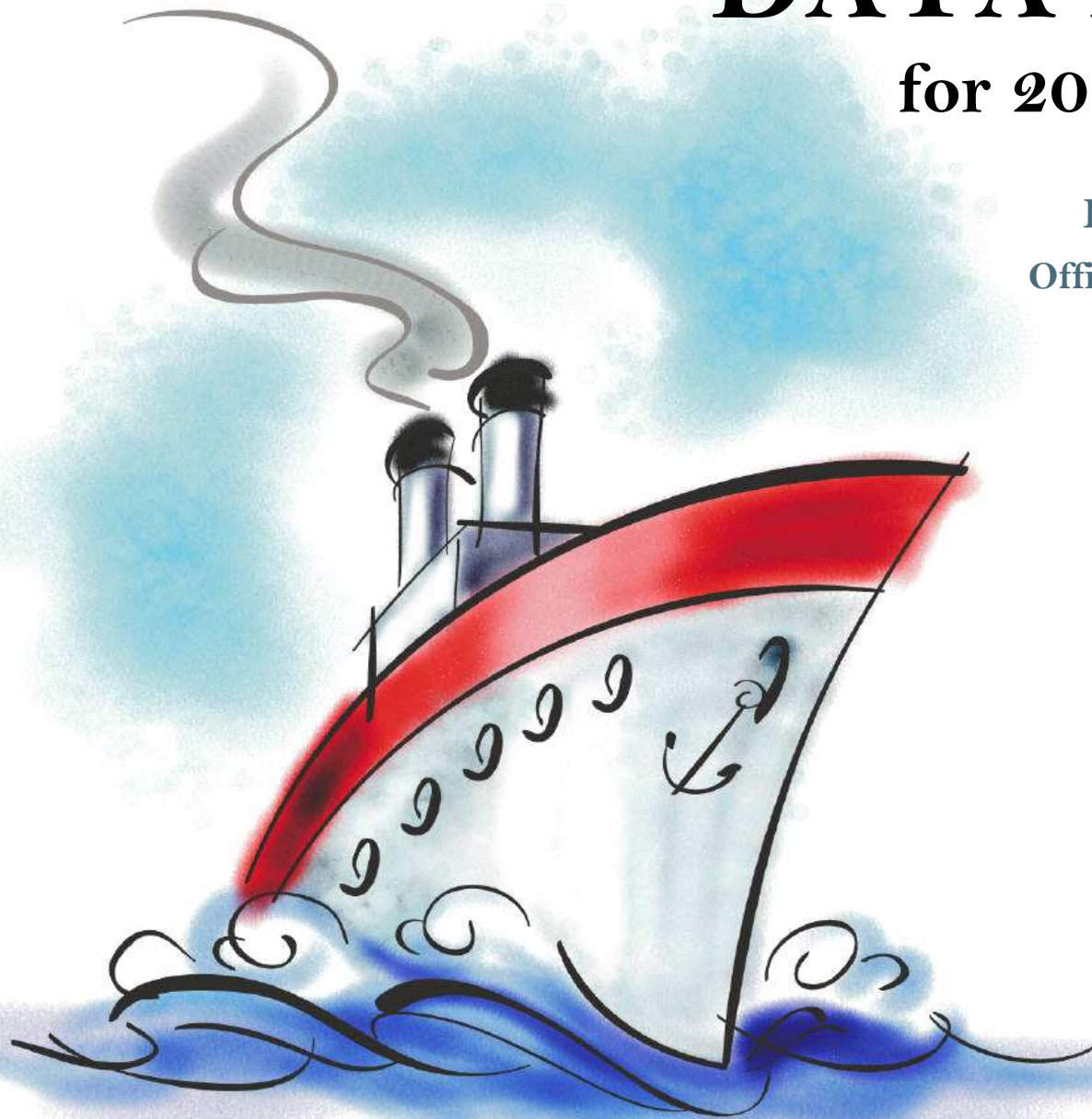
for 2014-15 planning

Evaluation & Assessment
Office of Institutional Research
<http://mydata.dallasisd.org>
OIR@dallasisd.org

September 5, 2014

School Number 2

**W.H. ADAMSON
HIGH SCHOOL**



Dallas Independent School District

2. Contents Table of Contents

STUDENTS AND STAFF

- 6. Summary Summary of Student and Teacher Statistics
- 8. Enroll (2) Enrollment Statistics by Select Student Group
- 10. Teachers Teacher Statistics

STAAR (English)

- 11. Reading (EOC) .. STAAR EOC Reading
- 19. Science (EOC) ... STAAR EOC Science

STAAR L

- 27. Math (EOC) STAAR L EOC Mathematics
- 35. SS (EOC) STAAR L EOC Social Studies

STAAR M

- 39. Reading (EOC) .. STAAR M EOC Reading
- 47. Science (EOC) ... STAAR M EOC Science

ENGLISH PROFICIENCY

- 51. WMLS Woodcock-Muñoz Language Survey

COLLEGE READINESS

- 53. SAT/ACT SAT/ACT Average Scores for Seniors
- 55. AP Advanced Placement (AP) Exams

LOCAL ASSESSMENT

- 56. ACP Assessments of Course Performance

3. Notes Notes and Data Descriptions

- 7. Enroll (1) Enrollment Statistics by Ethnicity
- 9. Attendance Student Attendance Statistics

- 15. Math (EOC) STAAR EOC Mathematics
- 23. SS (EOC) STAAR EOC Social Studies

31. Science (EOC) ... STAAR L EOC Science

43. Math (EOC) STAAR M EOC Mathematics

52. TELPAS Texas English Language Proficiency Assessment System

54. PSAT PSAT Average Scores

2013-14 SCHOOL SUMMARY

- Student percentages are computed as the percentage of total student enrollment.
- Additional statistics are available in ENROLLMENT and TEACHER reports.
- Race/ethnic categories are based on the newest federal standards for ethnicity and race reporting, though some categories have been combined because of small group sizes. Students reporting their ethnicity as “Hispanic” are not counted in any race category.
- “Economically disadvantaged” students are those who qualify for free or reduced-price lunch through the federal government's program.
- Teacher demographics and assignments are from the district's Public Education Information Management System (PEIMS) submission to the TEA.

ENROLLMENT

- Statistics are based on the school's enrollment at the end of the fifth six-weeks grading period.
- “Economically disadvantaged” students are those receiving free or reduced-price lunches.
- “New” students were new to the district in 2013-14. They are counted as new if not enrolled in a district campus before the last day of the 2012-13 school year.
- The “retention rate” is the percentage of students in the same grade at the end of the fifth six-weeks grading period for both 2012-13 and 2013-14.

ATTENDANCE

- Statistics are based on student attendance through the end of the sixth six-weeks grading period (the end of the school year).
- “Average daily membership” is the total number of school days students were ENROLLED divided by the number of school days in the year.
- The “average daily attendance” number (N) is the total number of school days students were IN ATTENDANCE divided by the number of school days in the year. The “average daily attendance” percentage (%) is the average attendance rate. For each student, the number of days attended is divided by the number of days enrolled. This rate is then averaged across students.
- The number (N) of “yearly transactions” is the total number of transfer and withdrawal transactions in the school year. The percentage (%) is the number of transactions divided by “average daily membership,” which gives (on average) the percentage of the membership associated with a transaction.
- “Continuously enrolled” students are enrolled and in attendance for a minimum number of instructional days in at least one course at the school between the beginning of the school year and the first day of the main STAAR testing period. The minimum number varies depending on the school year's calendar, but is typically around 130 days.
- The “stability rate” is the number of continuously enrolled students divided by “average daily membership.”

TEACHERS

- Teacher demographics and assignments are from the district's Public Education Information Management System (PEIMS) submission to the TEA.
- Teacher absences counted towards the average DO NOT include vacation days (coded as VAC in personnel database).
- Retention rate for a school year is computed with numerator “# of teachers assigned to the school both that year and the year prior” and denominator “# of teachers assigned to the school for the prior year.” That is, the retention rate is the percentage of the prior year's teachers who continued at the school.

STAAR, STAAR L, and STAAR M

- Cells marked with an asterisk (*) indicate five or fewer students were tested. Blank cells indicate no students were tested.
- Student group assignments are from the district's Public Education Information Management System (PEIMS) submission to the TEA.
- STAAR statistics are based on results from standard STAAR only. STAAR L and STAAR M statistics are computed separately, following TEA reporting practice.
- “Percentage Satisfactory” is the percentage of students achieving Level 2 (Satisfactory) or Level 3 (Advanced).
- Statistics by reporting category are averages for all students (across student groups and genders).
- An “average percentage correct” is computed as follows: for each student, divide the number of items correctly answered by the total number of items in the test section, then average the resulting percentages across all students. For short answers on EOC English tests, an “average rating” is presented; STAAR EOC short answers are rated on a scale of 0 to 3. For written compositions on writing tests, “average score points” is presented. Additional details provided in report footnotes.
- EOC statistics are based on first administration scores from the fall and spring administrations.
- Beginning in 2014, EOC Reading and EOC Writing tests were replaced with EOC English tests.

TELPAS

- Students are counted as having tested if any one of the four domains is rated. Because a TELPAS composite rating is not assigned to a student unless all four domains are rated, the number of TELPAS composite ratings may be smaller than the number tested.
- If a student's composite rating did not increase at least one level from 2013 to 2014, the TEA did not report the 2013 composite rating.
- If a student is rated as advanced high in 2014, the TEA does not differentiate between the advanced and advanced high levels from 2013.

COLLEGE READINESS

- Cells marked with an asterisk (*) indicate five or fewer students were tested. Blank cells indicate no students were tested.
- For SAT and ACT, “Percent Tested” is computed with “Number Tested” as numerator and, as denominator, Grade 12 “Enrollment” as reported in Enrollment (1) and Enrollment (2) reports. For PSAT, the denominator for “Percent Tested” is grade-level enrollment as reported in Enrollment reports.
- Score summaries for SAT and ACT contain all scores available for the school year at the time of publication.
- The SAT and ACT are administered throughout the school year by The College Board and ACT, Inc. A student takes the SAT or ACT at the time and location of her choice, and she may take either test multiple times. If a student has results from multiple administrations, only the latest is used.
- SAT scores range from 200 to 800. ACT scores range from 0 to 36.
- SAT College and Career Readiness Benchmarks are the same for each subject (critical reading, mathematics, and writing): 500. The SAT benchmark indicates a 65 percent likelihood of achieving a B- average or higher during the first year of college. ACT's College Readiness Benchmarks are the minimum scores that indicate a 50 percent chance of earning a B or better (and 75 percent chance of earning a C or better) in the corresponding college course. The ACT benchmarks are available for four subject-area tests. They are English: 18, reading: 21, mathematics: 22, and science: 24.
- PSAT scores range from 20 to 80. PSAT is administered once each year in October. District students taking PSAT are tested at their schools. Statistics for a grade level are based on all students in that grade level in the fall with a PSAT score for that year. (Students' scores will be used in multiple statistics if they took the PSAT in multiple years.)
- PSAT/NMSQT College and Career Readiness Benchmarks are the scores associated with a 65 percent likelihood of achieving a B- first-year college GPA. The College Board has determined PSAT benchmark scores separately for grades 10 and 11 in each subject. For grade 10, the benchmarks are critical reading: 42, mathematics: 44, writing: 42. For grade 11, the benchmarks are critical reading: 45, mathematics: 47, writing: 45. There are no benchmarks for grade 9.
- AP scores range from 1 to 5; a minimum of 3 is needed to pass.

ACP

- Cells marked with an asterisk (*) indicate five or fewer students were tested. Blank cells indicate no students were tested.
- The ACPs are semester exams administered in grades K-12. Not all courses have ACPs. In MIDDLE and HIGH school, ACP results account for a portion of students' final semester grades (10% and 15% respectively). “Average course mark (no ACP)” is computed from semester grades before factoring in ACP scores. In ELEMENTARY school, ACP results account for 5% of students' semester grades for core courses; course-grade statistics are not reported in data packets for elementary grades.
- Raw scores on the ACPs (percentage of items correct) are scaled each year to maintain similar annual passing rates for the district.
- A scale score of at least 70 percent is required to pass an ACP. A course mark of at least 70 percent is required to pass a course.
- Statistics are computed separately for Semester 1 and Semester 2 tests; time of administration during the school year is not relevant. Results from tests written for different school years are not combined.

STUDENT ENROLLMENT

Grade	Enrollment
9	382
10	384
11	299
12	333
ALL	1,398

STUDENT AND TEACHER RACE/ETHNICITY

Ethnicity/Race	Students		Teachers	
	Number	Percent	Number	Percent
Black/African American	40	2.9	30	35.7
American Indian/Alaska Native	8	0.6	*	*
Asian/Hawaiian/Pacific Islander	2	0.1	*	*
Hispanic	1,333	95.4	15	17.9
White	10	0.7	38	45.2
Multiple	5	0.4	0	0.0
Other* (teachers only)	—	—	1	1.2
Not reported (students only)	0	0.0	—	—

*For teachers, "Other" category includes American Indian/Alaska Native and Asian/Hawaiian/Pacific Islander.

SELECT STUDENT GROUP ENROLLMENT

Group	Number	Percent
At-Risk	1,146	82.0
Economically disadvantaged	1,283	91.8
Limited English proficient (LEP)	341	24.4
Special education	107	7.7
Talented and Gifted (TAG)	133	9.5

Grade	Year	Enrollment	African American		American Indian		Asian		Hispanic		White		Multiple category	
			N	%	N	%	N	%	N	%	N	%	N	%
9	2012	373	15	4.0	2	0.5	0	0.0	352	94.4	2	0.5	2	0.5
	2013	425	17	4.0	3	0.7	0	0.0	402	94.6	2	0.5	1	0.2
	2014	382	7	1.8	1	0.3	2	0.5	369	96.6	2	0.5	1	0.3
10	2012	352	14	4.0	2	0.6	0	0.0	332	94.3	3	0.9	1	0.3
	2013	332	15	4.5	2	0.6	0	0.0	311	93.7	2	0.6	2	0.6
	2014	384	11	2.9	2	0.5	0	0.0	367	95.6	3	0.8	1	0.3
11	2012	337	10	3.0	3	0.9	0	0.0	320	95.0	3	0.9	1	0.3
	2013	369	17	4.6	3	0.8	0	0.0	343	93.0	5	1.4	1	0.3
	2014	299	14	4.7	3	1.0	0	0.0	279	93.3	1	0.3	2	0.7
12	2012	274	11	4.0	2	0.7	1	0.4	258	94.2	2	0.7	0	0.0
	2013	325	14	4.3	3	0.9	0	0.0	306	94.2	1	0.3	1	0.3
	2014	333	8	2.4	2	0.6	0	0.0	318	95.5	4	1.2	1	0.3
9-12	2012	1,336	50	3.7	9	0.7	1	0.1	1,262	94.5	10	0.7	4	0.3
	2013	1,451	63	4.3	11	0.8	0	0.0	1,362	93.9	10	0.7	5	0.3
	2014	1,398	40	2.9	8	0.6	2	0.1	1,333	95.4	10	0.7	5	0.4

Grade	Year	Enrollment	Economically Disadvantaged		LEP		Special Education		At Risk		TAG		New (to District)		Gender		Retention Rate (%)
			N	%	N	%	N	%	N	%	N	%	N	%	% Male	% Female	
9	2012	373	339	90.9	108	29.0	27	7.2	268	71.8	30	8.0	60	16.1	53.6	46.4	2.4
	2013	425	390	91.8	133	31.3	27	6.4	323	76.0	35	8.2	76	17.9	55.3	44.7	2.8
	2014	382	350	91.6	115	30.1	29	7.6	309	80.9	40	10.5	74	19.4	52.1	47.9	4.5
10	2012	352	307	87.2	83	23.6	32	9.1	262	74.4	45	12.8	44	12.5	52.3	47.7	0.6
	2013	332	304	91.6	77	23.2	29	8.7	249	75.0	24	7.2	17	5.1	53.0	47.0	1.5
	2014	384	364	94.8	107	27.9	27	7.0	333	86.7	34	8.9	10	2.6	55.7	44.3	1.3
11	2012	337	278	82.5	69	20.5	24	7.1	279	82.8	26	7.7	26	7.7	51.6	48.4	0.6
	2013	369	335	90.8	53	14.4	33	8.9	283	76.7	42	11.4	17	4.6	52.0	48.0	3.3
	2014	299	280	93.6	67	22.4	19	6.4	245	81.9	21	7.0	13	4.3	51.2	48.8	0.0
12	2012	274	223	81.4	57	20.8	25	9.1	217	79.2	24	8.8	9	3.3	51.1	48.9	4.7
	2013	325	289	88.9	60	18.5	27	8.3	277	85.2	24	7.4	3	0.9	52.3	47.7	4.0
	2014	333	289	86.8	52	15.6	32	9.6	259	77.8	38	11.4	4	1.2	49.2	50.8	3.0
9-12	2012	1,336	1,147	85.9	317	23.7	108	8.1	1,026	76.8	125	9.4	139	10.4	52.2	47.8	1.9
	2013	1,451	1,318	90.8	323	22.3	116	8.0	1,132	78.0	125	8.6	113	7.8	53.3	46.7	2.9
	2014	1,398	1,283	91.8	341	24.4	107	7.7	1,146	82.0	133	9.5	101	7.2	52.2	47.8	2.3

Grade	Year	Average Daily Membership		Average Daily Attendance				Yearly Transactions			Continuously Enrolled		Stability Rate	
		N	District	N	%	District N	District %	N	%	District %	N	District	%	District
9	2012	380	10,922	359	94.6	10,196	93.3	45	11.8	27.8	329	8,726	86.6	79.9
	2013	419	11,153	398	95.1	10,499	94.1	75	17.9	28.3	378	9,388	90.2	84.2
	2014	388	10,850	368	94.8	10,242	94.4	70	18.0	28.4	335	9,091	86.3	83.8
10	2012	351	9,007	329	93.7	8,431	93.6	43	12.2	20.6	297	7,332	84.5	81.4
	2013	341	9,331	320	93.8	8,812	94.4	33	9.7	20.5	292	8,042	85.5	86.2
	2014	387	9,898	367	94.7	9,367	94.6	32	8.3	20.3	353	8,628	91.1	87.2
11	2012	348	8,913	322	92.5	8,306	93.2	38	10.9	15.9	291	7,319	83.7	82.1
	2013	370	8,457	346	93.5	7,949	94.0	41	11.1	18.9	316	7,295	85.3	86.3
	2014	305	8,467	286	93.9	8,005	94.5	28	9.2	18.1	268	7,476	88.0	88.3
12	2012	275	8,178	249	90.6	7,571	92.6	24	8.7	12.6	221	6,742	80.5	82.4
	2013	321	8,199	295	91.9	7,661	93.4	18	5.6	14.9	266	7,269	82.8	88.7
	2014	347	7,886	322	92.7	7,407	93.9	9	2.6	15.2	299	7,027	86.2	89.1
9-12	2012	1,354	37,021	1,259	93.0	34,504	93.2	150	11.1	19.8	1,138	30,119	84.1	81.4
	2013	1,452	37,140	1,360	93.7	34,922	94.0	167	11.5	21.2	1,252	31,994	86.2	86.1
	2014	1,427	37,101	1,343	94.1	35,021	94.4	139	9.7	21.1	1,255	32,222	87.9	86.8

Teachers: 84

DISTRIBUTIONS

Ethnicity/Race	Number	Percentage
African American	30	35.7
Hispanic	15	17.9
White	38	45.2
Multiple	0	0.0
Other	1	1.2

Gender	Number	Percentage
Female	42	50.0
Male	42	50.0

ATTENDANCE / RETENTION

	Average Absences	Retention Rate
2011-12	6.9	—
2012-13	6.6	77.4
2013-14	7.1	78.3

YEARS EXPERIENCE

Years	Number	Percentage
Beginning (0)	8	9.5
1	10	11.9
2	5	6.0
3	6	7.1
4	3	3.6
5	1	1.2
1-3	21	25.0
More than 3	55	65.5
1 - 5	25	29.8
6 - 10	18	21.4
11 - 20	20	23.8
More than 20	13	15.5

PERCENTAGE SATISFACTORY (Levels 2 and 3)

Test	Year	White	African Amer	Hispanic	Econ Disadv	Special Educ	LEP	At Risk	Migrant	Male	Female	All	District
ENGLISH I	2012												
	2013												
	2014	*	66.7	49.4	49.8	34.0	22.3	40.7		42.7	57.8	49.5	50.9
Tests Taken	2012												
	2013												
	2014	3	12	563	512	47	220	455		321	263	584	13,789
ENGLISH II	2012												
	2013												
	2014	*	46.2	54.0	53.5	14.3	27.9	43.8		46.4	62.3	53.8	54.8
Tests Taken	2012												
	2013												
	2014	3	13	422	389	28	129	347		235	207	442	10,943

NUMBER UNSATISFACTORY (Level 1)

Test	Year	White	African Amer	Hispanic	Econ Disadv	Special Educ	LEP	At Risk	Migrant	Male	Female	All	District
ENGLISH I	2012												
	2013												
	2014	*	4	285	257	31	171	270		184	111	295	6,774
Tests Taken	2012												
	2013												
	2014	3	12	563	512	47	220	455		321	263	584	13,789
ENGLISH II	2012												
	2013												
	2014	*	7	194	181	24	93	195		126	78	204	4,948
Tests Taken	2012												
	2013												
	2014	3	13	422	389	28	129	347		235	207	442	10,943

PERCENTAGE ADVANCED (Level 3)

Test	Year	White	African Amer	Hispanic	Econ Disadv	Special Educ	LEP	At Risk	Migrant	Male	Female	All	District
ENGLISH I	2012												
	2013												
	2014	*	0.0	0.5	0.6	0.0	0.9	0.4		0.3	0.8	0.5	3.2
Tests Taken	2012												
	2013												
	2014	3	12	563	512	47	220	455		321	263	584	13,789
ENGLISH II	2012												
	2013												
	2014	*	0.0	0.2	0.0	0.0	0.0	0.0		0.4	0.0	0.2	2.7
Tests Taken	2012												
	2013												
	2014	3	13	422	389	28	129	347		235	207	442	10,943

AVERAGE PERCENTAGE OF ITEMS CORRECT BY REPORTING CATEGORY

ENGLISH I	1. Understanding & Analysis Across Genres	1. Average Rating Short Answer #1 ¹	1. Average Rating Short Answer #2 ¹	2. Understanding & Analysis of Literary Texts	3. Understanding & Analysis of Informational Texts	4. Expository Composition ²	5. Revision	6. Editing
2012								
2013								
2014	60.4	0.9	1.2	60.6	54.6	3.9	62.6	47.9

ENGLISH II	1. Understanding & Analysis Across Genres	1. Average Rating Short Answer #1 ¹	1. Average Rating Short Answer #2 ¹	2. Understanding & Analysis of Literary Texts	3. Understanding & Analysis of Informational Texts	4. Persuasive Composition ²	5. Revision	6. Editing
2012								
2013								
2014	72.9	0.9	1.2	49.3	62.1	4.1	64.3	65.7

¹Short answer rating scale: 0=Insufficient; 1=Partially Sufficient; 2=Sufficient; 3=Exemplary

²Average score points (0-8). A composition is rated twice on a scale of 1 to 4, and the ratings are summed to determine score points for the composition. Score point scale: 0=Nonscorable; 2=Very Limited; 3=between Very Limited and Basic; 4=Basic; 5=between Basic and Satisfactory; 6=Satisfactory; 7=between Satisfactory and Accomplished; 8=Accomplished

PERCENTAGE SATISFACTORY (Levels 2 or 3)

Test	Year	White	African Amer	Hispanic	Econ Disadv	Special Educ	LEP	At Risk	Migrant	Male	Female	All	District
ALGEBRA I	2012		61.5	78.5	77.2	63.2	66.7	75.0		78.6	76.3	77.5	74.7
	2013	*	70.0	77.9	77.7	68.8	69.9	71.6		73.4	82.5	77.8	72.5
	2014	*	85.7	78.7	79.4	76.0	67.5	74.3		76.2	81.1	78.5	78.0
Tests Taken	2012		13	233	228	19	75	201		131	118	249	8,795
	2013	2	10	280	274	16	83	201		154	143	297	9,251
	2014	1	7	263	238	25	80	202		143	132	275	9,524

NUMBER UNSATISFACTORY (Level 1)

Test	Year	White	African Amer	Hispanic	Econ Disadv	Special Educ	LEP	At Risk	Migrant	Male	Female	All	District
ALGEBRA I	2012		5	50	52	7	25	41		28	28	56	2,226
	2013	*	3	62	61	5	25	57		41	25	66	2,540
	2014	*	1	56	49	6	26	52		34	25	59	2,099
Tests Taken	2012		13	233	228	19	75	201		131	118	249	8,795
	2013	2	10	280	274	16	83	201		154	143	297	9,251
	2014	1	7	263	238	25	80	202		143	132	275	9,524

PERCENTAGE ADVANCED (Level 3)

Test	Year	White	African Amer	Hispanic	Econ Disadv	Special Educ	LEP	At Risk	Migrant	Male	Female	All	District
ALGEBRA I	2012		0.0	0.9	0.9	0.0	1.3	0.6		0.0	1.7	0.8	7.0
	2013	*	0.0	5.4	5.5	0.0	2.4	1.5		6.5	3.5	5.1	8.6
	2014	*	0.0	4.9	4.6	4.0	1.3	2.0		4.2	5.3	4.7	9.9
Tests Taken	2012		13	233	228	19	75	164		131	118	249	8,795
	2013	2	10	280	274	16	83	201		154	143	297	9,251
	2014	1	7	263	238	25	80	202		143	132	275	9,524

AVERAGE PERCENTAGE OF ITEMS CORRECT BY REPORTING CATEGORY

ALGEBRA I	1. Functional Relationships	2. Properties and Attributes of Functions	3. Linear Functions	4. Linear Equations and Inequalities	5. Quadratic and Other Nonlinear Functions
2012	50.6	45.6	45.2	41.8	48.6
2013	54.9	44.9	48.4	47.5	48.9
2014	46.2	47.3	53.0	48.5	49.9

PERCENTAGE SATISFACTORY (Levels 2 and 3)

Test	Year	White	African Amer	Hispanic	Econ Disadv	Special Educ	LEP	At Risk	Migrant	Male	Female	All	District
BIOLOGY	2012	*	76.9	88.9	88.6	76.2	80.9	82.8		90.1	86.9	88.6	82.9
	2013	*	58.3	82.5	81.7	68.8	71.6	73.5		82.1	82.2	82.1	84.4
	2014	*	87.5	92.0	92.2	60.9	83.1	88.7		91.1	92.3	91.7	89.8
Tests Taken	2012	1	13	324	307	21	94	198		182	160	342	8,881
	2013	2	12	343	334	16	88	211		195	169	364	9,374
	2014	2	8	324	293	23	83	222		169	169	338	9,672

NUMBER UNSATISFACTORY (Level 1)

Test	Year	White	African Amer	Hispanic	Econ Disadv	Special Educ	LEP	At Risk	Migrant	Male	Female	All	District
BIOLOGY	2012	*	3	36	35	5	18	34		18	21	39	1,522
	2013	*	5	60	61	5	25	56		35	30	65	1,467
	2014	*	1	26	23	9	14	25		15	13	28	987
Tests Taken	2012	1	13	324	307	21	94	198		182	160	342	8,881
	2013	2	12	343	334	16	88	211		195	169	364	9,374
	2014	2	8	324	293	23	83	222		169	169	338	9,672

PERCENTAGE ADVANCED (Level 3)

Test	Year	White	African Amer	Hispanic	Econ Disadv	Special Educ	LEP	At Risk	Migrant	Male	Female	All	District
BIOLOGY	2012	*	0.0	5.2	4.9	4.8	2.1	1.5		7.1	2.5	5.0	4.8
	2013	*	8.3	4.4	4.8	0.0	2.3	1.4		7.2	1.8	4.7	7.5
	2014	*	0.0	2.5	2.7	0.0	1.2	0.9		3.0	1.8	2.4	7.5
Tests Taken	2012	1	13	324	307	21	94	198		182	160	342	8,881
	2013	2	12	343	334	16	88	211		195	169	364	9,374
	2014	2	8	324	293	23	83	222		169	169	338	9,672

AVERAGE PERCENTAGE OF ITEMS CORRECT BY REPORTING CATEGORY

BIOLOGY	1. Cell Structure and Function	2. Mechanisms of Genetics	3. Biological Evolution and Classification	4. Biological Processes and Systems	5. Interdependence within Environmental Systems
2012	55.1	53.9	59.3	49.7	57.5
2013	51.3	48.5	59.6	50.3	50.0
2014	45.1	57.2	61.0	58.5	50.3

PERCENTAGE SATISFACTORY (Levels 2 or 3)

Test	Year	White	African Amer	Hispanic	Econ Disadv	Special Educ	LEP	At Risk	Migrant	Male	Female	All	District
U.S. HISTORY	2012												*
	2013												90.2
	2014	*	100.0	95.9	96.1	69.2	86.2	94.2		97.3	94.9	96.2	92.0
Tests Taken	2012												4
	2013												51
	2014	2	13	267	257	13	58	190		150	136	286	7,801

NUMBER UNSATISFACTORY (Level 1)

Test	Year	White	African Amer	Hispanic	Econ Disadv	Special Educ	LEP	At Risk	Migrant	Male	Female	All	District
U.S. HISTORY	2012												*
	2013												5
	2014	*	0	11	10	4	8	11		4	7	11	625
Tests Taken	2012												4
	2013												51
	2014	2	13	267	257	13	58	190		150	136	286	7,801

PERCENTAGE ADVANCED (Level 3)

Test	Year	White	African Amer	Hispanic	Econ Disadv	Special Educ	LEP	At Risk	Migrant	Male	Female	All	District
U.S. HISTORY	2012												*
	2013												2.0
	2014	*	15.4	4.1	3.9	0.0	1.7	2.6		6.0	2.9	4.5	10.3
Tests Taken	2012												4
	2013												51
	2014	2	13	267	257	13	58	190		150	136	286	7,801

AVERAGE PERCENTAGE OF ITEMS CORRECT BY REPORTING CATEGORY

U.S. HISTORY	1. History	2. Geography and Culture	3. Government and Citizenship	4. Economics, Science, Technology, and Society
2012				
2013				
2014	56.7	65.0	64.5	66.8

PERCENTAGE SATISFACTORY (Levels 2 and 3)

Test	Year	White	African Amer	Hispanic	Econ Disadv	Special Educ	LEP	At Risk	Migrant	Male	Female	All	District
ALGEBRA I	2012			58.3	54.5	*	58.3	55.6		83.3	33.3	58.3	42.9
	2013			42.9	42.3		41.9	50.0		35.0	54.5	41.9	51.2
	2014			50.0	50.0		48.0	52.2		41.7	53.8	48.0	42.9
Tests Taken	2012			12	11	1	12	9		6	6	12	282
	2013			28	26		31	22		20	11	31	320
	2014			24	22		25	23		12	13	25	471

NUMBER UNSATISFACTORY (Level 1)

Test	Year	White	African Amer	Hispanic	Econ Disadv	Special Educ	LEP	At Risk	Migrant	Male	Female	All	District
ALGEBRA I	2012			5	5	*	5	4		1	4	5	161
	2013			16	15		18	11		13	5	18	156
	2014			12	11		13	11		7	6	13	269
Tests Taken	2012			12	11	1	12	9		6	6	12	282
	2013			28	26		31	22		20	11	31	320
	2014			24	22		25	23		12	13	25	471

PERCENTAGE ADVANCED (Level 3)

Test	Year	White	African Amer	Hispanic	Econ Disadv	Special Educ	LEP	At Risk	Migrant	Male	Female	All	District
ALGEBRA I	2012			0.0	0.0	*	0.0	0.0		0.0	0.0	0.0	2.5
	2013			0.0	3.8		3.2	0.0		5.0	0.0	3.2	4.1
	2014			4.2	4.5		4.0	4.3		0.0	7.7	4.0	2.3
Tests Taken	2012			12	11	1	12	9		6	6	12	282
	2013			28	26		31	22		20	11	31	320
	2014			24	22		25	23		12	13	25	471

AVERAGE PERCENTAGE OF ITEMS CORRECT BY REPORTING CATEGORY

ALGEBRA I	1. Functional Relationships	2. Properties and Attributes of Functions	3. Linear Functions	4. Linear Equations and Inequalities	5. Quadratic and Other Nonlinear Functions
2012	54.2	45.1	42.8	44.2	46.3
2013	50.4	38.2	37.0	32.3	38.7
2014	50.0	43.3	39.2	32.0	37.8

PERCENTAGE SATISFACTORY (Levels 2 and 3)

Test	Year	White	African Amer	Hispanic	Econ Disadv	Special Educ	LEP	At Risk	Migrant	Male	Female	All	District
BIOLOGY	2012			53.8	50.0	*	53.8	55.6		66.7	42.9	53.8	25.5
	2013			56.7	53.6		54.5	68.2		47.6	66.7	54.5	49.0
	2014			50.0	50.0		48.1	52.0		37.5	63.6	48.1	42.6
Tests Taken	2012			13	12	1	13	9		6	7	13	200
	2013			30	28		33	22		21	12	33	259
	2014			26	26		27	25		16	11	27	404

NUMBER UNSATISFACTORY (Level 1)

Test	Year	White	African Amer	Hispanic	Econ Disadv	Special Educ	LEP	At Risk	Migrant	Male	Female	All	District
BIOLOGY	2012			6	6	*	6	4		2	4	6	149
	2013			13	13		15	7		11	4	15	132
	2014			13	13		14	12		10	4	14	232
Tests Taken	2012			13	12	1	13	9		6	7	13	200
	2013			30	28		33	22		21	12	33	259
	2014			26	26		27	25		16	11	27	404

PERCENTAGE ADVANCED (Level 3)

Test	Year	White	African Amer	Hispanic	Econ Disadv	Special Educ	LEP	At Risk	Migrant	Male	Female	All	District
BIOLOGY	2012			0.0	0.0	*	0.0	0.0		0.0	0.0	0.0	0.0
	2013			0.0	0.0		0.0	0.0		0.0	0.0	0.0	0.0
	2014			0.0	0.0		0.0	0.0		0.0	0.0	0.0	0.2
Tests Taken	2012			13	12	1	13	9		6	7	13	200
	2013			30	28		33	22		21	12	33	259
	2014			26	26		27	25		16	11	27	404

AVERAGE PERCENTAGE OF ITEMS CORRECT BY REPORTING CATEGORY

BIOLOGY	1. Cell Structure and Function	2. Mechanisms of Genetics	3. Biological Evolution and Classification	4. Biological Processes and Systems	5. Interdependence within Environmental Systems
2012	43.4	36.4	46.9	42.0	21.7
2013	37.5	35.5	41.5	38.8	38.0
2014	36.4	46.5	41.5	33.3	39.4

PERCENTAGE SATISFACTORY (Levels 2 and 3)

Test	Year	White	African Amer	Hispanic	Econ Disadv	Special Educ	LEP	At Risk	Migrant	Male	Female	All	District
U.S. HISTORY	2012												
	2013												
	2014			71.4	83.3		71.4	71.4		*	*	71.4	47.4
Tests Taken	2012												
	2013												
	2014			7	6		7	7		3	4	7	38

NUMBER UNSATISFACTORY (Level 1)

Test	Year	White	African Amer	Hispanic	Econ Disadv	Special Educ	LEP	At Risk	Migrant	Male	Female	All	District
U.S. HISTORY	2012												
	2013												
	2014			2	1		2	2		*	*	2	20
Tests Taken	2012												
	2013												
	2014			7	6		7	7		3	4	7	38

PERCENTAGE ADVANCED (Level 3)

Test	Year	White	African Amer	Hispanic	Econ Disadv	Special Educ	LEP	At Risk	Migrant	Male	Female	All	District
U.S. HISTORY	2012												
	2013												
	2014			0.0	0.0		0.0	0.0		*	*	0.0	2.6
Tests Taken	2012												
	2013												
	2014			7	6		7	7		3	4	7	38

AVERAGE PERCENTAGE OF ITEMS CORRECT BY REPORTING CATEGORY

U.S. HISTORY	1. History	2. Geography and Culture	3. Government and Citizenship	4. Economics, Science, Technology, and Society
2012				
2013				
2014	59.5	47.6	47.1	45.5

PERCENTAGE SATISFACTORY (Levels 2 and 3)

Test	Year	White	African Amer	Hispanic	Econ Disadv	Special Educ	LEP	At Risk	Migrant	Male	Female	All	District
ENGLISH I	2012												
	2013												
	2014			0.0	0.0	0.0	*	0.0		*	*	0.0	50.6
Tests Taken	2012												
	2013												
	2014			7	6	7	5	7		5	2	7	405
ENGLISH II	2012												
	2013												
	2014		*	50.0	42.9	42.9	*	42.9		*	*	42.9	65.3
Tests Taken	2012												
	2013												
	2014		1	6	7	7	4	7		5	2	7	340

NUMBER UNSATISFACTORY (Level 1)

Test	Year	White	African Amer	Hispanic	Econ Disadv	Special Educ	LEP	At Risk	Migrant	Male	Female	All	District
ENGLISH I	2012												
	2013												
	2014			7	6	7	*	7		*	*	7	200
Tests Taken	2012												
	2013												
	2014			7	6	7	5	7		5	2	7	405
ENGLISH II	2012												
	2013												
	2014		*	3	4	4	*	4		*	*	4	118
Tests Taken	2012												
	2013												
	2014		1	6	7	7	4	7		5	2	7	340

PERCENTAGE ADVANCED (Level 3)

Test	Year	White	African Amer	Hispanic	Econ Disadv	Special Educ	LEP	At Risk	Migrant	Male	Female	All	District
ENGLISH I	2012												
	2013												
	2014			0.0	0.0	0.0	*	0.0		*	*	0.0	3.5
Tests Taken	2012												
	2013												
	2014			7	6	7	5	7		5	2	7	405
ENGLISH II	2012												
	2013												
	2014		*	0.0	0.0	0.0	*	0.0		*	*	0.0	12.6
Tests Taken	2012												
	2013												
	2014		1	6	7	7	4	7		5	2	7	340

AVERAGE PERCENTAGE OF ITEMS CORRECT BY REPORTING CATEGORY

ENGLISH I	1. Understanding & Analysis Across Genres	2. Understanding & Analysis of Literary Texts	3. Understanding & Analysis of Informational Texts	4. Literary Composition ¹	5. Revision	6. Editing
2012						
2013						
2014	42.9	23.8	36.5	1.7	28.6	49.2

ENGLISH II	1. Understanding & Analysis Across Genres	2. Understanding & Analysis of Literary Texts	3. Understanding & Analysis of Informational Texts	4. Expository Composition ¹	5. Revision	6. Editing
2012						
2013						
2014	39.3	44.4	49.2	2.4	36.5	44.4

¹Average score points (range 0-6). A STAAR M composition is rated twice on a scale of 0 to 3, and the ratings are summed to determine score points for the composition. Score point scale: 0=Non-scorable; 2=Very Limited; 3=between Very Limited and Basic; 4=Basic; 5=between Basic and Satisfactory; 6=Satisfactory

PERCENTAGE SATISFACTORY (Levels 2 and 3)

Test	Year	White	African Amer	Hispanic	Econ Disadv	Special Educ	LEP	At Risk	Migrant	Male	Female	All	District
ALGEBRA I	2012			*	*	*	*	*		*		*	32.5
	2013		*	0.0	0.0	0.0	*	0.0		0.0	*	0.0	36.9
	2014			50.0	*	50.0	*	50.0		*	*	50.0	46.1
Tests Taken	2012			3	3	3	1	3		3		3	280
	2013		2	6	8	8	3	8		6	2	8	339
	2014			6	5	6	4	6		4	2	6	360

NUMBER UNSATISFACTORY (Level 1)

Test	Year	White	African Amer	Hispanic	Econ Disadv	Special Educ	LEP	At Risk	Migrant	Male	Female	All	District
ALGEBRA I	2012			*	*	*	*	*		*		*	189
	2013		*	6	8	8	*	8		6	*	8	214
	2014			3	*	3	*	3		*	*	3	194
Tests Taken	2012			3	3	3	1	3		3		3	280
	2013		2	6	8	8	3	8		6	2	8	339
	2014			6	5	6	4	6		4	2	6	360

PERCENTAGE ADVANCED (Level 3)

Test	Year	White	African Amer	Hispanic	Econ Disadv	Special Educ	LEP	At Risk	Migrant	Male	Female	All	District
ALGEBRA I	2012			*	*	*	*	*		*		*	0.4
	2013		*	0.0	0.0	0.0	*	0.0		0.0	*	0.0	0.0
	2014			0.0	*	0.0	*	0.0		*	*	0.0	1.4
Tests Taken	2012			3	3	3	1	3		3		3	280
	2013		2	6	8	8	3	8		6	2	8	339
	2014			6	5	6	4	6		4	2	6	360

AVERAGE PERCENTAGE OF ITEMS CORRECT BY REPORTING CATEGORY

ALGEBRA I	1. Functional Relationships	2. Properties and Attributes of Functions	3. Linear Functions	4. Linear Equations and Inequalities	5. Quadratic and Other Nonlinear Functions
2012	*	*	*	*	*
2013	35.4	27.5	29.2	32.8	48.2
2014	55.6	46.7	45.8	33.3	50.0

PERCENTAGE SATISFACTORY (Levels 2 and 3)

Test	Year	White	African Amer	Hispanic	Econ Disadv	Special Educ	LEP	At Risk	Migrant	Male	Female	All	District
BIOLOGY	2012			*	*	*	*	*		*		*	31.7
	2013		*	33.3	28.6	28.6	*	28.6		33.3	*	28.6	42.6
	2014			28.6	33.3	28.6	*	28.6		*	*	28.6	46.6
Tests Taken	2012			3	3	3	1	3		3		3	262
	2013		1	6	7	7	3	7		6	1	7	331
	2014			7	6	7	5	7		5	2	7	350

NUMBER UNSATISFACTORY (Level 1)

Test	Year	White	African Amer	Hispanic	Econ Disadv	Special Educ	LEP	At Risk	Migrant	Male	Female	All	District
BIOLOGY	2012			*	*	*	*	*		*		*	179
	2013		*	4	5	5	*	5		4	*	5	190
	2014			5	4	5	*	5		*	*	5	187
Tests Taken	2012			3	3	3	1	3		3		3	262
	2013		1	6	7	7	3	7		6	1	7	331
	2014			7	6	7	5	7		5	2	7	350

PERCENTAGE ADVANCED (Level 3)

Test	Year	White	African Amer	Hispanic	Econ Disadv	Special Educ	LEP	At Risk	Migrant	Male	Female	All	District
BIOLOGY	2012			*	*	*	*	*		*		*	0.0
	2013		*	0.0	0.0	0.0	*	0.0		0.0	*	0.0	0.0
	2014			0.0	0.0	0.0	*	0.0		*	*	0.0	1.1
Tests Taken	2012			3	3	3	1	3		3		3	262
	2013		1	6	7	7	3	7		6	1	7	331
	2014			7	6	7	5	7		5	2	7	350

AVERAGE PERCENTAGE OF ITEMS CORRECT BY REPORTING CATEGORY

BIOLOGY	1. Cell Structure and Function	2. Mechanisms of Genetics	3. Biological Evolution and Classification	4. Biological Processes and Systems	5. Interdependence within Environmental Systems
2012	*	*	*	*	*
2013	41.3	35.7	42.9	41.3	34.9
2014	54.0	42.9	51.8	52.4	30.2

PERCENTAGE DEMONSTRATING IMPROVEMENT

Grade	Level 1 in 2013		Level 2 in 2013		Level 3 in 2013		Levels 1-3 in 2013	
	Number Tested Both Years	Percentage Improved in 2014	Number Tested Both Years	Percentage Improved in 2014	Number Tested Both Years	Percentage Improved in 2014	Number Tested Both Years	Percentage Improved in 2014
9	26	19.2	9	33.3	0		35	22.9
10	11	18.2	9	55.6	0		20	35.0
11	6	50.0	5	*	0		11	54.5
12	7	42.9	9	44.4	0		16	43.8
ALL	50	26.0	32	46.9	0		82	34.1

PERFORMANCE IN 2014

Grade 2013-14 (N Rated)	Domain:	Listening		Speaking		Writing		Reading		Composite	
	2014 Level	N	%	N	%	N	%	N	%	N	%
9 (114)	Beginning	3	2.7	9	8.0	7	6.2	22	19.3	7	6.2
	Intermediate	18	15.9	23	20.4	24	21.2	30	26.3	28	24.8
	Advanced	41	36.3	35	31.0	41	36.3	42	36.8	38	33.6
	Advanced High	51	45.1	46	40.7	41	36.3	20	17.5	40	35.4
10 (106)	Beginning	0	0.0	3	2.8	5	4.7	13	12.6	2	1.9
	Intermediate	5	4.7	17	16.0	26	24.5	26	25.2	28	27.2
	Advanced	45	42.5	42	39.6	48	45.3	41	39.8	41	39.8
	Advanced High	56	52.8	44	41.5	27	25.5	23	22.3	32	31.1
11 (63)	Beginning	0	0.0	4	6.3	0	0.0	4	6.3	0	0.0
	Intermediate	14	22.2	16	25.4	15	23.8	15	23.8	15	23.8
	Advanced	26	41.3	20	31.7	25	39.7	25	39.7	25	39.7
	Advanced High	23	36.5	23	36.5	23	36.5	19	30.2	23	36.5
12 (45)	Beginning	0	0.0	0	0.0	0	0.0	3	6.8	0	0.0
	Intermediate	6	14.0	6	14.0	10	23.3	14	31.8	4	9.5
	Advanced	19	44.2	20	46.5	17	39.5	19	43.2	26	61.9
	Advanced High	18	41.9	17	39.5	16	37.2	8	18.2	12	28.6
ALL (328)	Beginning	3	0.9	16	4.9	12	3.7	42	13.0	9	2.8
	Intermediate	43	13.2	62	19.1	75	23.1	85	26.2	75	23.4
	Advanced	131	40.3	117	36.0	131	40.3	127	39.2	130	40.5
	Advanced High	148	45.5	130	40.0	107	32.9	70	21.6	107	33.3

**PROGRESSION FROM
2013 TO 2014**

Number Rated Both Years N (%) Progressed	2014 Level	2013 Level			
		Beg	Int	Adv	Adv High
60 31 (51.7%)	Beginning	0			
	Intermediate	2	9		
	Advanced	0	3	20	
	Advanced High	0	0	26	
96 41 (42.7%)	Beginning	1			
	Intermediate	8	20		
	Advanced	1	2	34	
	Advanced High	1	0	29	
55 23 (41.8%)	Beginning	0			
	Intermediate	2	13		
	Advanced	0	1	19	
	Advanced High	0	1	19	
35 13 (37.1%)	Beginning	0			
	Intermediate	0	3		
	Advanced	0	3	19	
	Advanced High	0	0	10	
246 108 (43.9%)	Beginning	1			
	Intermediate	12	45		
	Advanced	1	9	92	
	Advanced High	1	1	84	

■ Indicates students who progressed at least one level from 2013 to 2014.

Test	Subtest	Year	Percent Tested		All Students			African American			Hispanic			White			District		
			%	Dist %	N	Mean	% at BMRK*	N	Mean	% at BMRK*	N	Mean	% at BMRK*	N	Mean	% at BMRK*	N	Mean	% at BMRK*
SAT	Critical Reading	2011-12	42.7	55.7	117	374	2.6	7	357	0.0	106	374	2.8	2	*	*	4,495	416	18.8
		2012-13	40.3	55.4	131	380	6.9	7	413	14.3	122	377	5.7				4,644	416	19.5
		2013-14	42.9	53.1	143	397	9.8	5	*	*	133	396	9.0	2	*	*	4,203	418	20.7
	Mathematics	2011-12	42.7	55.7	117	409	15.4	7	376	14.3	106	407	14.2	2	*	*	4,495	446	29.8
		2012-13	40.3	55.4	131	394	6.9	7	423	14.3	122	392	6.6				4,644	445	29.0
		2013-14	42.9	53.1	143	415	13.3	5	*	*	133	415	12.0	2	*	*	4,203	440	27.4
	Writing	2011-12	42.7	55.7	117	376	6.0	7	380	14.3	106	373	3.8	2	*	*	4,495	408	15.9
		2012-13	40.3	55.4	131	377	5.3	7	376	0.0	122	377	4.9				4,644	406	16.1
		2013-14	42.9	53.1	143	397	10.5	5	*	*	133	397	9.8	2	*	*	4,203	411	16.9
ACT	English	2011-12	43.8	37.1	120	14	21.7	7	15	42.9	110	14	20.0	2	*	*	2,995	15	33.3
		2012-13	14.5	29.3	47	15	25.5	3	*	*	42	15	26.2				2,454	16	34.0
		2013-14	45.9	42.0	153	14	20.9	2	*	*	150	14	20.7				3,324	15	29.3
	Mathematics	2011-12	43.8	37.1	120	16	6.7	7	16	0.0	110	16	6.4	2	*	*	2,995	18	22.7
		2012-13	14.5	29.3	47	17	4.3	3	*	*	42	17	4.8				2,454	19	24.4
		2013-14	45.9	42.0	153	17	11.8	2	*	*	150	17	11.3				3,324	18	21.8
	Reading	2011-12	43.8	37.1	120	15	7.5	7	16	14.3	110	15	7.3	2	*	*	2,995	17	23.7
		2012-13	14.5	29.3	47	16	8.5	3	*	*	42	16	9.5				2,454	17	26.5
		2013-14	45.9	42.0	153	16	16.3	2	*	*	150	16	16.7				3,324	17	23.8
	Science	2011-12	43.8	37.1	120	16	0.8	7	15	0.0	110	16	0.9	2	*	*	2,995	18	10.8
		2012-13	14.5	29.3	47	17	4.3	3	*	*	42	17	4.8				2,454	18	12.7
		2013-14	45.9	42.0	153	17	5.9	2	*	*	150	17	5.3				3,324	18	8.7
	Composite	2011-12	43.8	37.1	120	15	-	7	16	-	110	15	-	2	*	-	2,995	17	-
		2012-13	14.5	29.3	47	16	-	3	*	-	42	16	-				2,454	18	-
		2013-14	45.9	42.0	153	16	-	2	*	-	150	16	-				3,324	17	-

*See the NOTES report for information about college-readiness benchmarks set by The College Board (SAT) and ACT, Inc.

Grade	Subtest	Year	All			African American			Hispanic			White			Other			District		
			N	Mean	% at BMRK*	N	Mean	% at BMRK*	N	Mean	% at BMRK*	N	Mean	% at BMRK*	N	Mean	% at BMRK*	N	Mean	% at BMRK*
9	Critical Reading	2011	29	32		1	*		26	33		0			2	*		1,979	39	
		2012																1,924	39	
		2013	25	34		0			25	34		0			0			1,788	39	
	Mathematics	2011	29	32		1	*		26	32		0			2	*		1,979	40	
		2012																1,924	40	
		2013	25	37		0			25	37		0			0			1,788	40	
	Writing	2011	29	28		1	*		26	29		0			2	*		1,979	39	
		2012																1,924	39	
		2013	25	36		0			25	36		0			0			1,788	39	
10	Critical Reading	2011	324	35	16.4	8	35	25.0	310	35	15.8	3	*	*	2	*	*	7,988	36	25.4
		2012	314	35	14.6	11	35	9.1	297	35	14.8	2	*	*	2	*	*	8,427	37	23.1
		2013	359	33	7.8	9	32	0.0	345	33	7.8	2	*	*	2	*	*	8,854	36	23.3
	Mathematics	2011	324	37	15.1	8	33	0.0	310	37	15.2	3	*	*	2	*	*	7,988	38	24.5
		2012	314	37	17.5	11	35	0.0	297	37	17.5	2	*	*	2	*	*	8,427	38	24.5
		2013	359	34	5.0	9	32	0.0	345	34	5.2	2	*	*	2	*	*	8,854	37	19.6
	Writing	2011	324	34	10.8	8	35	12.5	310	34	10.6	3	*	*	2	*	*	7,988	36	22.7
		2012	314	36	20.7	11	34	0.0	297	36	21.2	2	*	*	2	*	*	8,427	37	23.7
		2013	359	33	10.3	9	33	11.1	345	33	10.4	2	*	*	2	*	*	8,854	36	21.0
11	Critical Reading	2011	13	41	30.8	0			11	42	36.4	1	*	*	1	*	*	3,980	41	33.2
		2012	83	39	18.1	0			82	39	17.1	0			1	*	*	4,007	41	27.4
		2013	44	37	6.8	1	*	*	42	37	7.1	1	*	*	0			3,787	42	32.8
	Mathematics	2011	13	44	46.2	0			11	45	45.5	1	*	*	1	*	*	3,980	43	38.0
		2012	83	43	24.1	0			82	42	23.2	0			1	*	*	4,007	43	33.0
		2013	44	38	4.5	1	*	*	42	38	4.8	1	*	*	0			3,787	44	33.1
	Writing	2011	13	42	23.1	0			11	42	27.3	1	*	*	1	*	*	3,980	40	28.7
		2012	83	40	27.7	0			82	40	26.8	0			1	*	*	4,007	41	33.0
		2013	44	37	13.6	1	*	*	42	37	14.3	1	*	*	0			3,787	41	32.5

*See the NOTES report for information about college readiness benchmarks set by The College Board for PSAT

Exams Taken		Average Score		Exams Passed		
N	Dist	Score	Dist	N	%	Dist

ALL EXAMS

405	18,984	1.9	1.9	108	26.7	25.1
------------	--------	------------	-----	------------	-------------	------

Chemistry

21	388	1.0	2.0	0	0.0	32.0
-----------	-----	------------	-----	----------	------------	------

Environmental Science

27	986	1.3	1.7	2	7.4	19.8
-----------	-----	------------	-----	----------	------------	------

World History

26	1,023	1.8	1.8	5	19.2	18.8
-----------	-------	------------	-----	----------	-------------	------

Exams Taken		Mean Score		Passed		
School	Dist	School	Dist	N	%	Dist

Calculus AB

22	960	2.4	2.5	10	45.5	45.7
-----------	-----	------------	-----	-----------	-------------	------

English Language & Composition

77	3,194	1.5	1.8	7	9.1	18.1
-----------	-------	------------	-----	----------	------------	------

Spanish Language

75	831	3.5	3.5	66	88.0	87.5
-----------	-----	------------	-----	-----------	-------------	------

Exams Taken		Mean Score		Passed		
School	Dist	School	Dist	N	%	Dist

Calculus BC

3	248	*	3.4	*	*	69.8
----------	-----	---	-----	---	---	------

English Literature & Composition

84	2,374	1.8	1.8	10	11.9	18.0
-----------	-------	------------	-----	-----------	-------------	------

United States History

70	2,570	1.5	1.5	6	8.6	12.6
-----------	-------	------------	-----	----------	------------	------

SEMESTER 1 TESTS

Number Tested	Averages				% Passing		District % Passing	
	% Items Correct	Scale Score	Course Mark	Course Mark (no ACP)	ACP	Course	ACP	Course

ALGEBRA I

309	39.8	69.4	76.9	78.2	43.0	80.1	41.1	81.4
-----	------	------	------	------	------	------	------	------

ALGEBRA II

241	45.6	72.8	75.0	75.3	70.1	80.9	47.9	86.0
-----	------	------	------	------	------	------	------	------

ALGEBRA II PRE-AP

92	43.9	71.5	71.4	71.3	64.1	63.0	55.3	89.4
----	------	------	------	------	------	------	------	------

ART I

175	62.7	72.0	91.9	95.4	66.3	100.0	79.1	94.8
-----	------	------	------	------	------	-------	------	------

BIOLOGY

315	50.4	72.5	72.9	73.0	67.3	73.5	61.9	82.5
-----	------	------	------	------	------	------	------	------

BIOLOGY PRE-AP

64	48.9	65.9	75.1	76.7	32.8	81.3	71.3	90.4
----	------	------	------	------	------	------	------	------

CHEMISTRY

298	34.3	68.7	76.8	78.3	43.3	88.9	49.7	83.5
-----	------	------	------	------	------	------	------	------

CHEMISTRY PRE-AP

99	45.6	71.4	83.4	85.5	51.5	99.0	64.2	93.3
----	------	------	------	------	------	------	------	------

ECONOMICS

166	63.7	75.8	80.2	81.0	77.7	93.4	69.6	95.1
-----	------	------	------	------	------	------	------	------

ENGLISH I

280	50.9	69.9	78.2	79.7	56.8	90.7	50.7	84.8
-----	------	------	------	------	------	------	------	------

ENGLISH I FOR ESL

35	45.8	69.3	84.0	86.5	37.1	100.0	54.2	88.3
----	------	------	------	------	------	-------	------	------

SEMESTER 2 TESTS

Number Tested	Averages				% Passing		District % Passing	
	% Items Correct	Scale Score	Course Mark	Course Mark (no ACP)	ACP	Course	ACP	Course

ALGEBRA I

--	--	--	--	--	--	--	--	--

ALGEBRA II

177	48.1	73.2	75.0	75.3	71.8	80.7	55.9	84.7
-----	------	------	------	------	------	------	------	------

ALGEBRA II PRE-AP

91	59.9	76.9	71.5	70.4	80.2	64.4	69.3	87.2
----	------	------	------	------	------	------	------	------

ART I

152	58.0	70.8	90.9	94.4	61.2	99.3	75.5	93.6
-----	------	------	------	------	------	------	------	------

BIOLOGY

--	--	--	--	--	--	--	--	--

BIOLOGY PRE-AP

--	--	--	--	--	--	--	--	--

CHEMISTRY

275	44.2	66.5	76.1	77.8	37.8	93.8	59.3	78.5
-----	------	------	------	------	------	------	------	------

CHEMISTRY PRE-AP

100	56.9	71.3	81.2	82.9	57.0	97.0	68.3	91.1
-----	------	------	------	------	------	------	------	------

ECONOMICS

--	--	--	--	--	--	--	--	--

ENGLISH I

265	56.6	70.4	78.2	79.6	56.6	87.4	58.2	81.7
-----	------	------	------	------	------	------	------	------

ENGLISH I FOR ESL

20	51.4	71.9	87.9	90.7	45.0	100.0	62.6	91.7
----	------	------	------	------	------	-------	------	------

SEMESTER 1 TESTS

Number Tested	Averages				% Passing		District % Passing	
	% Items Correct	Scale Score	Course Mark	Course Mark (no ACP)	ACP	Course	ACP	Course

ENGLISH I PRE-AP

77	54.7	71.1	78.4	79.7	62.3	93.4	71.2	92.1
----	------	------	------	------	------	------	------	------

ENGLISH II

270	58.4	72.3	78.5	79.5	68.1	89.4	59.6	83.5
-----	------	------	------	------	------	------	------	------

ENGLISH II FOR ESL

11	53.9	72.9	86.7	89.2	63.6	100.0	50.3	93.8
----	------	------	------	------	------	-------	------	------

ENGLISH II PRE-AP

91	54.8	73.4	81.5	82.9	76.9	95.6	73.6	91.4
----	------	------	------	------	------	------	------	------

ENGLISH III

227	62.6	73.3	78.3	79.2	68.7	92.1	55.7	89.1
-----	------	------	------	------	------	------	------	------

ENGLISH IV

244	58.8	72.5	75.2	75.6	65.6	80.9	67.9	91.6
-----	------	------	------	------	------	------	------	------

ENVIRONMENTAL SYSTEMS

161	65.7	75.5	81.7	82.7	77.6	100.0	75.5	97.3
-----	------	------	------	------	------	-------	------	------

FRENCH I

175	52.2	68.1	82.6	85.1	42.3	95.4	68.1	85.0
-----	------	------	------	------	------	------	------	------

GEOMETRY

279	47.7	72.0	79.7	81.1	65.2	93.5	61.9	83.3
-----	------	------	------	------	------	------	------	------

GEOMETRY PRE-AP

143	53.6	70.4	76.3	77.4	53.1	88.1	64.6	89.6
-----	------	------	------	------	------	------	------	------

GOVERNMENT

156	55.7	71.7	78.0	79.0	62.2	92.3	58.9	94.1
-----	------	------	------	------	------	------	------	------

SEMESTER 2 TESTS

Number Tested	Averages				% Passing		District % Passing	
	% Items Correct	Scale Score	Course Mark	Course Mark (no ACP)	ACP	Course	ACP	Course

ENGLISH I PRE-AP

77	59.6	74.2	77.6	78.2	67.5	87.0	78.6	93.9
----	------	------	------	------	------	------	------	------

ENGLISH II

256	60.7	72.6	77.8	78.8	63.3	89.4	61.3	80.9
-----	------	------	------	------	------	------	------	------

ENGLISH II FOR ESL

11	59.2	74.5	85.5	87.5	63.6	100.0	62.3	87.4
----	------	------	------	------	------	-------	------	------

ENGLISH II PRE-AP

93	56.3	71.5	81.4	83.2	60.2	96.7	72.2	89.9
----	------	------	------	------	------	------	------	------

ENGLISH III

209	65.2	71.0	76.0	76.9	63.2	78.8	52.9	82.6
-----	------	------	------	------	------	------	------	------

ENGLISH IV

--	--	--	--	--	--	--	--	--

ENVIRONMENTAL SYSTEMS

--	--	--	--	--	--	--	--	--

FRENCH I

137	55.4	70.3	76.9	78.0	51.8	88.2	65.5	80.1
-----	------	------	------	------	------	------	------	------

GEOMETRY

266	51.6	74.1	77.5	78.2	69.2	85.7	66.7	79.7
-----	------	------	------	------	------	------	------	------

GEOMETRY PRE-AP

141	46.8	71.5	74.2	74.6	63.1	72.3	66.0	89.1
-----	------	------	------	------	------	------	------	------

GOVERNMENT

--	--	--	--	--	--	--	--	--

SEMESTER 1 TESTS

Number Tested	Averages				% Passing		District % Passing	
	% Items Correct	Scale Score	Course Mark	Course Mark (no ACP)	ACP	Course	ACP	Course

HS BAND: LISTENING AND MUSIC ELEMENTS

20	74.4	90.9	93.8	60.0	100.0	67.0	98.9
----	------	------	------	------	-------	------	------

HS HEALTH EDUCATION

133	64.8	76.5	84.8	86.2	77.4	98.4	81.1	96.5
-----	------	------	------	------	------	------	------	------

PHYSICS

345	34.4	66.6	77.1	78.9	29.3	89.9	37.8	85.3
-----	------	------	------	------	------	------	------	------

PHYSICS PRE-AP

102	38.2	63.7	76.9	79.3	23.5	86.3	53.9	94.5
-----	------	------	------	------	------	------	------	------

PRE-CALCULUS

95	52.5	70.3	70.6	70.6	55.8	58.5	53.4	87.9
----	------	------	------	------	------	------	------	------

PRE-CALCULUS PRE-AP

110	53.0	68.7	80.2	82.2	45.5	96.3	72.6	93.1
-----	------	------	------	------	------	------	------	------

READING II FOR ESL

30	36.5	61.9	84.8	88.8	16.7	100.0	48.7	94.2
----	------	------	------	------	------	-------	------	------

READING III FOR ESL

6	68.1	78.7	89.8	91.8	83.3	100.0	55.1	99.3
---	------	------	------	------	------	-------	------	------

SPANISH FOR NATIVE SPEAKERS I

225	60.8	73.8	78.4	79.3	68.9	91.1	64.4	89.8
-----	------	------	------	------	------	------	------	------

SPANISH FOR NATIVE SPEAKERS II

104	54.0	69.3	81.2	83.3	55.8	98.1	62.7	94.3
-----	------	------	------	------	------	------	------	------

SPANISH I

57	77.3	84.9	82.0	81.4	87.7	94.6	71.3	91.2
----	------	------	------	------	------	------	------	------

SEMESTER 2 TESTS

Number Tested	Averages				% Passing		District % Passing	
	% Items Correct	Scale Score	Course Mark	Course Mark (no ACP)	ACP	Course	ACP	Course

HS BAND: LISTENING AND MUSIC ELEMENTS

16	78.4	89.5	91.5	81.3	93.8	84.0	96.5
----	------	------	------	------	------	------	------

HS HEALTH EDUCATION

99	62.1	73.0	84.5	86.6	66.7	99.0	76.7	95.7
----	------	------	------	------	------	------	------	------

PHYSICS

183	43.5	70.3	78.6	80.1	50.8	95.1	53.6	82.4
-----	------	------	------	------	------	------	------	------

PHYSICS PRE-AP

85	42.8	69.9	76.5	77.6	51.8	82.4	62.4	91.8
----	------	------	------	------	------	------	------	------

PRE-CALCULUS

8	49.2	75.0	69.8	68.8	62.5	62.5	48.2	82.4
---	------	------	------	------	------	------	------	------

PRE-CALCULUS PRE-AP

67	59.8	76.8	81.1	81.8	83.6	89.6	62.6	90.8
----	------	------	------	------	------	------	------	------

READING II FOR ESL

22	50.3	66.9	83.2	86.0	40.9	95.5	70.2	91.1
----	------	------	------	------	------	------	------	------

READING III FOR ESL

6	60.1	75.1	89.3	91.9	50.0	100.0	64.7	94.9
---	------	------	------	------	------	-------	------	------

SPANISH FOR NATIVE SPEAKERS I

220	59.2	72.8	76.4	77.1	65.5	82.3	68.1	84.6
-----	------	------	------	------	------	------	------	------

SPANISH FOR NATIVE SPEAKERS II

64	56.8	71.2	80.9	82.6	62.5	93.8	69.8	88.6
----	------	------	------	------	------	------	------	------

SPANISH I

57	70.1	80.1	83.9	84.6	75.4	96.5	72.9	84.3
----	------	------	------	------	------	------	------	------

SEMESTER 1 TESTS

Number Tested	Averages				% Passing		District % Passing	
	% Items Correct	Scale Score	Course Mark	Course Mark (no ACP)	ACP	Course	ACP	Course

SPANISH II

67	65.1	76.8	75.9	75.8	64.2	77.6	72.2	93.0
----	------	------	------	------	------	------	------	------

U.S. HISTORY

212	62.0	70.8	75.3	76.1	57.1	84.9	51.5	86.9
-----	------	------	------	------	------	------	------	------

WEB DESIGN

118	65.5	77.0	84.8	86.1	78.0	96.6	75.4	94.0
-----	------	------	------	------	------	------	------	------

WORLD GEOGRAPHY

302	50.3	70.8	78.3	79.7	53.3	94.4	48.7	86.7
-----	------	------	------	------	------	------	------	------

WORLD GEOGRAPHY PRE-AP

75	63.4	75.6	84.0	85.4	78.7	100.0	75.0	94.9
----	------	------	------	------	------	-------	------	------

WORLD HISTORY

279	47.6	69.8	77.0	78.3	47.3	89.2	48.3	90.0
-----	------	------	------	------	------	------	------	------

WORLD HISTORY PRE-AP

97	58.6	72.4	75.3	75.8	63.9	89.7	65.5	95.0
----	------	------	------	------	------	------	------	------

SEMESTER 2 TESTS

Number Tested	Averages				% Passing		District % Passing	
	% Items Correct	Scale Score	Course Mark	Course Mark (no ACP)	ACP	Course	ACP	Course

SPANISH II

34	71.0	80.6	85.3	86.0	73.5	100.0	76.5	89.2
----	------	------	------	------	------	-------	------	------

U.S. HISTORY

--	--	--	--	--	--	--	--	--

WEB DESIGN

81	55.9	70.6	79.9	81.7	63.0	86.1	57.6	86.1
----	------	------	------	------	------	------	------	------

WORLD GEOGRAPHY

295	51.3	70.8	76.2	77.1	57.6	83.2	57.7	82.9
-----	------	------	------	------	------	------	------	------

WORLD GEOGRAPHY PRE-AP

75	61.6	74.4	81.8	83.1	72.0	98.7	79.5	94.5
----	------	------	------	------	------	------	------	------

WORLD HISTORY

262	58.5	72.3	77.5	78.4	63.7	86.3	58.5	85.3
-----	------	------	------	------	------	------	------	------

WORLD HISTORY PRE-AP

96	68.8	76.6	75.3	75.1	81.3	86.5	65.4	94.3
----	------	------	------	------	------	------	------	------