

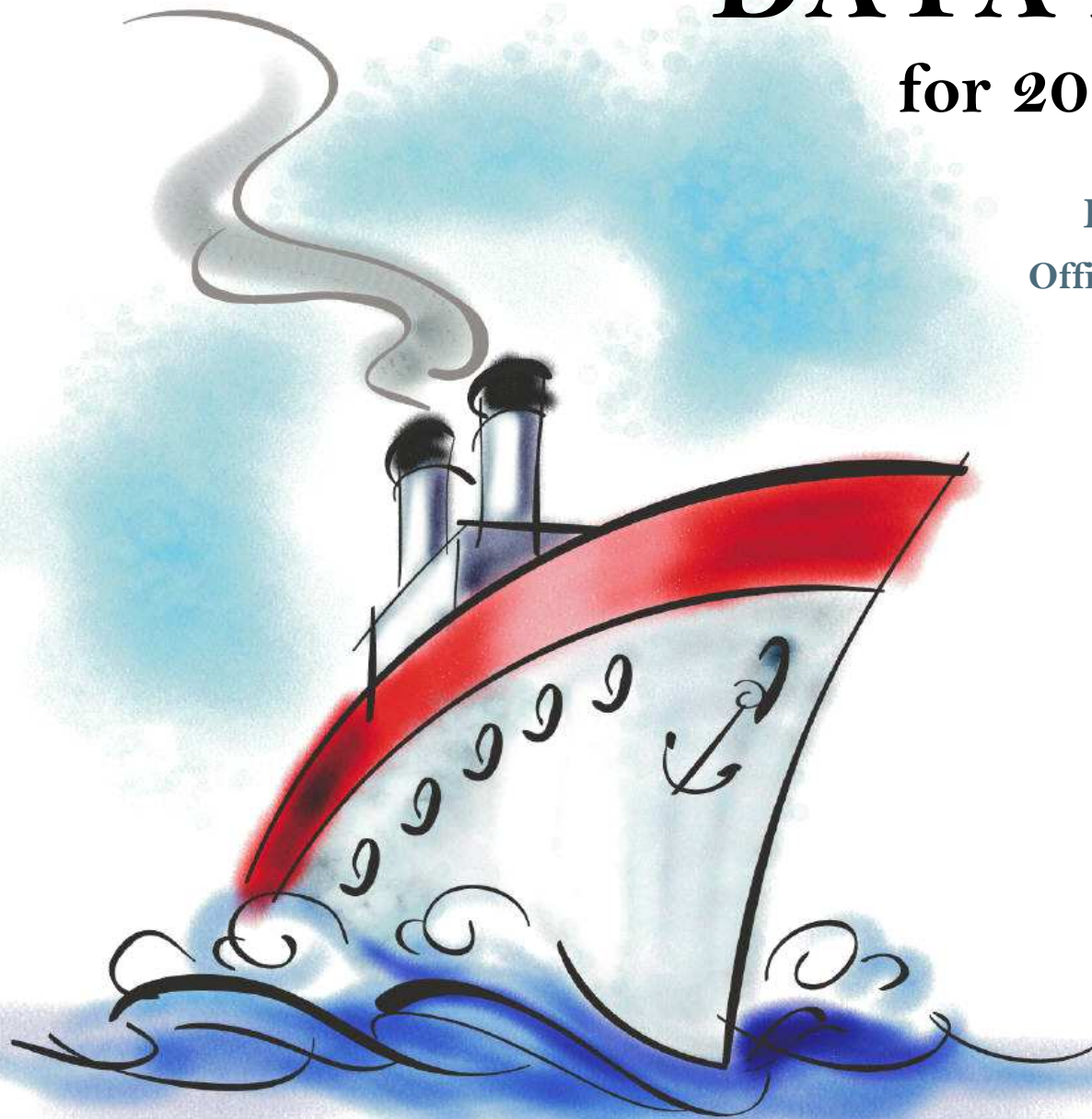
DATA PACKET

for 2014-15 planning

Evaluation & Assessment
Office of Institutional Research
<http://mydata.dallasisd.org>
OIR@dallasisd.org

September 8, 2014

**W.T. WHITE
FEEDER GROUP**



Dallas Independent School District

2. Contents Table of Contents

STUDENTS AND STAFF

- 5. Summary Summary of Student and Teacher Statistics
- 9. Enroll (2) Enrollment Statistics by Select Student Group
- 15. Teachers Teacher Statistics

STAAR (English)

- 16. Reading (3-8) STAAR 3-8 Reading in English
- 28. Writing (3-8) STAAR 3-8 Writing in English
- 43. Math (EOC) STAAR EOC Mathematics
- 54. Science (EOC) ... STAAR EOC Science
- 62. SS (EOC) STAAR EOC Social Studies

STAAR (Spanish)

- 66. Reading (3-8) STAAR 3-8 Reading in Spanish
- 74. Math (3-8) STAAR 3-8 Mathematics in Spanish

STAAR L

- 82. Math (3-8) STAAR L 3-8 Mathematics
- 94. Science (3-8) STAAR L 3-8 Science
- 105. SS (3-8) STAAR L 3-8 Social Studies

STAAR M

- 109. Reading (3-8) STAAR M 3-8 Reading
- 121. Writing (3-8) STAAR M 3-8 Writing
- 136. Math (EOC) STAAR M EOC Mathematics
- 147. Science (EOC) ... STAAR M EOC Science
- 155. SS (EOC) STAAR M EOC Social Studies

ITBS/LOGRAMOS

- 159. Compliance SCE Compliance for At-Risk Students
- 162. Math ITBS Mathematics Subtests

ENGLISH PROFICIENCY

- 168. WMLS Woodcock-Muñoz Language Survey

3. Notes Notes and Data Descriptions

- 6. Enroll (1) Enrollment Statistics by Ethnicity
- 12. Attendance Student Attendance Statistics

- 24. Reading (EOC) .. STAAR EOC Reading
- 35. Math (3-8) STAAR 3-8 Mathematics in English
- 47. Science (3-8) STAAR 3-8 Science in English
- 58. SS (3-8) STAAR 3-8 Social Studies in English

- 70. Writing (3-8) STAAR 3-8 Writing in Spanish
- 78. Science (3-8) STAAR 3-8 Science in Spanish

- 90. Math (EOC) STAAR L EOC Mathematics
- 101. Science (EOC) ... STAAR L EOC Science

- 117. Reading (EOC) .. STAAR M EOC Reading
- 128. Math (3-8) STAAR M 3-8 Mathematics
- 140. Science (3-8) STAAR M 3-8 Science
- 151. SS (3-8) STAAR M 3-8 Social Studies

- 160. Reading ITBS Reading Subtests
- 166. Reading Logramos Reading Subtests

- 169. TELPAS Texas English Language Proficiency Assessment System

2013-14 SCHOOL SUMMARY

- Student percentages are computed as the percentage of total student enrollment.
- Additional statistics are available in ENROLLMENT and TEACHER reports.
- Race/ethnic categories are based on the newest federal standards for ethnicity and race reporting, though some categories have been combined because of small group sizes. Students reporting their ethnicity as “Hispanic” are not counted in any race category.
- “Economically disadvantaged” students are those who qualify for free or reduced-price lunch through the federal government's program.
- Teacher demographics and assignments are from the district's Public Education Information Management System (PEIMS) submission to the TEA.

ENROLLMENT

- Statistics are based on the school's enrollment at the end of the fifth six-weeks grading period.
- “Economically disadvantaged” students are those receiving free or reduced-price lunches.
- “New” students were new to the district in 2013-14. They are counted as new if not enrolled in a district campus before the last day of the 2012-13 school year.
- The “retention rate” is the percentage of students in the same grade at the end of the fifth six-weeks grading period for both 2012-13 and 2013-14.

ATTENDANCE

- Statistics are based on student attendance through the end of the sixth six-weeks grading period (the end of the school year).
- “Average daily membership” is the total number of school days students were ENROLLED divided by the number of school days in the year.
- The “average daily attendance” number (N) is the total number of school days students were IN ATTENDANCE divided by the number of school days in the year. The “average daily attendance” percentage (%) is the average attendance rate. For each student, the number of days attended is divided by the number of days enrolled. This rate is then averaged across students.
- The number (N) of “yearly transactions” is the total number of transfer and withdrawal transactions in the school year. The percentage (%) is the number of transactions divided by “average daily membership,” which gives (on average) the percentage of the membership associated with a transaction.
- “Continuously enrolled” students are enrolled and in attendance for a minimum number of instructional days in at least one course at the school between the beginning of the school year and the first day of the main STAAR testing period. The minimum number varies depending on the school year's calendar, but is typically around 130 days.
- The “stability rate” is the number of continuously enrolled students divided by “average daily membership.”

TEACHERS

- Teacher demographics and assignments are from the district's Public Education Information Management System (PEIMS) submission to the TEA.
- Teacher absences counted towards the average DO NOT include vacation days (coded as VAC in personnel database).
- Retention rate for a school year is computed with numerator “# of teachers assigned to the school both that year and the year prior” and denominator “# of teachers assigned to the school for the prior year.” That is, the retention rate is the percentage of the prior year's teachers who continued at the school.

STAAR, STAAR L, and STAAR M

- Cells marked with an asterisk (*) indicate five or fewer students were tested. Blank cells indicate no students were tested.
- Student group assignments are from the district's Public Education Information Management System (PEIMS) submission to the TEA.
- STAAR statistics are based on results from standard STAAR only. STAAR L and STAAR M statistics are computed separately, following TEA reporting practice.
- “Percentage Satisfactory” is the percentage of students achieving Level 2 (Satisfactory) or Level 3 (Advanced).
- Statistics by reporting category are averages for all students (across student groups and genders).
- An “average percentage correct” is computed as follows: for each student, divide the number of items correctly answered by the total number of items in the test section, then average the resulting percentages across all students. For short answers on EOC English tests, an “average rating” is presented; STAAR EOC short answers are rated on a scale of 0 to 3. For written compositions on writing tests, “average score points” is presented. Additional details provided in report footnotes.
- Reading and mathematics statistics for SSI grades 5 and 8 are based on scores cumulative through the second administration. EOC statistics are based on first administration scores from the fall and spring administrations.
- Beginning in 2014, EOC Reading and EOC Writing tests were replaced with EOC English tests.

SCE COMPLIANCE and ITBS / ITED / LOGRAMOS

- Cells marked with an asterisk (*) indicate five or fewer students were tested. Blank cells indicate no students were tested.
- Student group assignments are based on demographic data in the Dallas ISD student database.
- Kindergarten ITBS reading statistics are based on the Reading Profile Total summary score. All other grades' ITBS reading statistics, and Logramos reading statistics for all grades, are based on the Reading Total summary score. (Reading Total values not available with use of the ITBS form administered in kindergarten.) “Number tested” statistics include kindergarten.
- Kindergarten ITBS mathematics statistics are based on the Mathematics subtest score. All other grades' statistics are based on the Mathematics Total summary score. (Mathematics Total values not available with use of the ITBS form administered in kindergarten.) “Number tested” statistics include kindergarten.
- Mathematics Total summary scores are combinations of the Mathematics Concepts, Problems, and Computation subtest results. For schools that did not administer Mathematics Concepts or Mathematics Problems subtests, Mathematics Computation statistics are provided separately.

TELPAS

- Students are counted as having tested if any one of the four domains is rated. Because a TELPAS composite rating is not assigned to a student unless all four domains are rated, the number of TELPAS composite ratings may be smaller than the number tested.
- If a student's composite rating did not increase at least one level from 2013 to 2014, the TEA did not report the 2013 composite rating.
- If a student is rated as advanced high in 2014, the TEA does not differentiate between the advanced and advanced high levels from 2013.

STUDENT ENROLLMENT

Grade	Enrollment
PK	535
KN	876
1	883
2	805
3	783
4	721
5	655
6	647
7	639
8	586
9	688
10	561
11	500
12	469
ALL	9,348

STUDENT AND TEACHER RACE/ETHNICITY

Ethnicity/Race	Students		Teachers	
	Number	Percent	Number	Percent
Black/African American	986	10.5	111	19.4
American Indian/Alaska Native	47	0.5	*	*
Asian/Hawaiian/Pacific Islander	166	1.8	*	*
Hispanic	7,177	76.8	185	32.4
White	851	9.1	248	43.4
Multiple	95	1.0	8	1.4
Other* (teachers only)	—	—	19	3.3
Not reported (students only)	0	0.0	—	—

*For teachers, "Other" category includes American Indian/Alaska Native and Asian/Hawaiian/Pacific Islander.

SELECT STUDENT GROUP ENROLLMENT

Group	Number	Percent
At-Risk	6,670	71.4
Economically disadvantaged	7,616	81.5
Limited English proficient (LEP)	4,148	44.4
Special education	666	7.1
Talented and Gifted (TAG)	1,091	11.7

Grade	Year	Enrollment	African American		American Indian		Asian		Hispanic		White		Multiple category	
			N	%	N	%	N	%	N	%	N	%	N	%
PK	2012	442	41	9.3	1	0.2	2	0.5	389	88.0	8	1.8	1	0.2
	2013	511	22	4.3	4	0.8	4	0.8	465	91.0	14	2.7	0	0.0
	2014	535	29	5.4	4	0.7	13	2.4	476	89.0	12	2.2	1	0.2
KN	2012	891	88	9.9	5	0.6	10	1.1	674	75.6	100	11.2	12	1.3
	2013	924	108	11.7	8	0.9	24	2.6	669	72.4	102	11.0	13	1.4
	2014	876	100	11.4	6	0.7	17	1.9	652	74.4	89	10.2	10	1.1
1	2012	869	92	10.6	5	0.6	11	1.3	660	75.9	92	10.6	5	0.6
	2013	886	86	9.7	6	0.7	15	1.7	675	76.2	98	11.1	6	0.7
	2014	883	111	12.6	7	0.8	22	2.5	645	73.0	81	9.2	17	1.9
2	2012	787	93	11.8	2	0.3	14	1.8	579	73.6	90	11.4	6	0.8
	2013	831	89	10.7	7	0.8	9	1.1	633	76.2	84	10.1	5	0.6
	2014	805	76	9.4	6	0.7	15	1.9	610	75.8	93	11.6	5	0.6
3	2012	808	78	9.7	2	0.2	18	2.2	633	78.3	62	7.7	13	1.6
	2013	751	88	11.7	2	0.3	15	2.0	546	72.7	90	12.0	9	1.2
	2014	783	87	11.1	8	1.0	8	1.0	587	75.0	84	10.7	6	0.8
4	2012	758	87	11.5	4	0.5	7	0.9	596	78.6	58	7.7	6	0.8
	2013	706	71	10.1	1	0.1	15	2.1	554	78.5	54	7.6	8	1.1
	2014	721	86	11.9	3	0.4	15	2.1	523	72.5	84	11.7	9	1.2
5	2012	715	69	9.7	2	0.3	20	2.8	559	78.2	56	7.8	8	1.1
	2013	753	80	10.6	2	0.3	6	0.8	591	78.5	63	8.4	9	1.2
	2014	655	67	10.2	2	0.3	13	2.0	511	78.0	50	7.6	9	1.4
PK-5	2012	5,270	548	10.4	21	0.4	82	1.6	4,090	77.6	466	8.8	51	1.0
	2013	5,362	544	10.1	30	0.6	88	1.6	4,133	77.1	505	9.4	50	0.9
	2014	5,258	556	10.6	36	0.7	103	2.0	4,004	76.2	493	9.4	57	1.1

Grade	Year	Enrollment	African American		American Indian		Asian		Hispanic		White		Multiple category	
			N	%	N	%	N	%	N	%	N	%	N	%
6	2012	642	71	11.1	2	0.3	13	2.0	509	79.3	41	6.4	3	0.5
	2013	711	69	9.7	2	0.3	9	1.3	560	78.8	58	8.2	11	1.5
	2014	647	71	11.0	2	0.3	6	0.9	521	80.5	37	5.7	10	1.5
7	2012	647	75	11.6	4	0.6	9	1.4	500	77.3	52	8.0	6	0.9
	2013	641	71	11.1	1	0.2	14	2.2	519	81.0	29	4.5	4	0.6
	2014	639	61	9.5	0	0.0	8	1.3	510	79.8	51	8.0	9	1.4
8	2012	649	95	14.6	3	0.5	9	1.4	490	75.5	48	7.4	2	0.3
	2013	607	64	10.5	4	0.7	8	1.3	469	77.3	56	9.2	4	0.7
	2014	586	62	10.6	1	0.2	13	2.2	475	81.1	28	4.8	5	0.9
6-8	2012	1,938	241	12.4	9	0.5	31	1.6	1,499	77.3	141	7.3	11	0.6
	2013	1,959	204	10.4	7	0.4	31	1.6	1,548	79.0	143	7.3	19	1.0
	2014	1,872	194	10.4	3	0.2	27	1.4	1,506	80.4	116	6.2	24	1.3

Grade	Year	Enrollment	African American		American Indian		Asian		Hispanic		White		Multiple category	
			N	%	N	%	N	%	N	%	N	%	N	%
9	2012	720	88	12.2	0	0.0	10	1.4	535	74.3	78	10.8	2	0.3
	2013	707	99	14.0	3	0.4	7	1.0	533	75.4	58	8.2	4	0.6
	2014	688	58	8.4	3	0.4	14	2.0	536	77.9	71	10.3	5	0.7
10	2012	541	62	11.5	1	0.2	3	0.6	402	74.3	60	11.1	4	0.7
	2013	576	70	12.2	0	0.0	6	1.0	425	73.8	67	11.6	1	0.2
	2014	561	66	11.8	4	0.7	6	1.1	425	75.8	54	9.6	4	0.7
11	2012	543	61	11.2	0	0.0	7	1.3	416	76.6	59	10.9	0	0.0
	2013	518	68	13.1	1	0.2	8	1.5	374	72.2	56	10.8	3	0.6
	2014	500	56	11.2	0	0.0	6	1.2	361	72.2	70	14.0	1	0.2
12	2012	486	64	13.2	2	0.4	11	2.3	343	70.6	65	13.4	1	0.2
	2013	500	53	10.6	0	0.0	6	1.2	393	78.6	48	9.6	0	0.0
	2014	469	56	11.9	1	0.2	10	2.1	345	73.6	47	10.0	4	0.9
9-12	2012	2,290	275	12.0	3	0.1	31	1.4	1,696	74.1	262	11.4	7	0.3
	2013	2,301	290	12.6	4	0.2	27	1.2	1,725	75.0	229	10.0	8	0.3
	2014	2,218	236	10.6	8	0.4	36	1.6	1,667	75.2	242	10.9	14	0.6
ALL	2012	9,498	1,064	11.2	33	0.3	144	1.5	7,285	76.7	869	9.1	69	0.7
	2013	9,622	1,038	10.8	41	0.4	146	1.5	7,406	77.0	877	9.1	77	0.8
	2014	9,348	986	10.5	47	0.5	166	1.8	7,177	76.8	851	9.1	95	1.0

Grade	Year	Enrollment	Economically Disadvantaged		LEP		Special Education		At Risk		TAG		New (to District)		Gender		Retention Rate (%)
			N	%	N	%	N	%	N	%	N	%	N	%	% Male	% Female	
PK	2012	442	415	93.9	305	69.0	40	9.0	307	69.5	0	0.0	426	96.4	51.1	48.9	0.7
	2013	511	489	95.7	374	73.2	33	6.5	379	74.2	0	0.0	495	96.9	46.0	54.0	1.0
	2014	535	494	92.3	403	75.3	34	6.4	411	76.8	0	0.0	511	95.5	53.5	46.5	0.4
KN	2012	891	742	83.3	483	54.2	64	7.2	492	55.2	33	3.7	474	53.2	52.5	47.5	1.7
	2013	924	762	82.5	474	51.3	65	7.0	499	54.0	34	3.7	484	52.4	53.7	46.3	2.6
	2014	876	718	82.0	445	50.8	54	6.2	481	54.9	38	4.3	417	47.6	47.9	52.1	1.9
1	2012	869	730	84.0	473	54.4	77	8.9	524	60.3	70	8.1	129	14.8	53.4	46.6	3.9
	2013	886	737	83.2	482	54.4	78	8.8	513	57.9	65	7.3	110	12.4	52.4	47.6	4.4
	2014	883	724	82.0	452	51.2	68	7.7	487	55.2	79	8.9	94	10.6	54.6	45.4	3.2
2	2012	787	662	84.1	423	53.7	56	7.1	553	70.3	114	14.5	99	12.6	52.7	47.3	3.0
	2013	831	705	84.8	459	55.2	67	8.1	597	71.8	102	12.3	80	9.6	53.7	46.3	3.9
	2014	805	674	83.7	433	53.8	71	8.8	570	70.8	94	11.7	70	8.7	51.3	48.7	1.7
3	2012	808	690	85.4	467	57.8	57	7.1	614	76.0	120	14.9	117	14.5	53.0	47.0	2.2
	2013	751	624	83.1	398	53.0	40	5.3	546	72.7	126	16.8	71	9.5	53.4	46.6	1.7
	2014	783	640	81.7	426	54.4	56	7.2	587	75.0	116	14.8	74	9.5	52.7	47.3	1.5
4	2012	758	658	86.8	453	59.8	65	8.6	597	78.8	111	14.6	84	11.1	48.8	51.2	1.2
	2013	706	603	85.4	415	58.8	62	8.8	532	75.4	107	15.2	62	8.8	53.3	46.7	0.7
	2014	721	598	82.9	380	52.7	51	7.1	550	76.3	135	18.7	73	10.1	53.7	46.3	0.7
5	2012	715	626	87.6	374	52.3	57	8.0	536	75.0	152	21.3	76	10.6	50.8	49.2	1.0
	2013	753	637	84.6	450	59.8	64	8.5	580	77.0	125	16.6	69	9.2	49.4	50.6	0.4
	2014	655	549	83.8	378	57.7	59	9.0	547	83.5	108	16.5	66	10.1	53.9	46.1	0.6
PK-5	2012	5,270	4,523	85.8	2,978	56.5	416	7.9	3,623	68.7	600	11.4	1,405	26.7	51.9	48.1	2.1
	2013	5,362	4,557	85.0	3,052	56.9	409	7.6	3,646	68.0	559	10.4	1,371	25.6	52.0	48.0	2.3
	2014	5,258	4,397	83.6	2,917	55.5	393	7.5	3,633	69.1	570	10.8	1,305	24.8	52.4	47.6	1.6

Grade	Year	Enrollment	Economically Disadvantaged		LEP		Special Education		At Risk		TAG		New (to District)		Gender		Retention Rate (%)
			N	%	N	%	N	%	N	%	N	%	N	%	% Male	% Female	
6	2012	642	547	85.2	348	54.2	41	6.4	444	69.2	103	16.0	75	11.7	52.6	47.4	0.5
	2013	711	611	85.9	326	45.9	54	7.6	534	75.1	146	20.5	57	8.0	53.2	46.8	1.0
	2014	647	550	85.0	323	49.9	53	8.2	548	84.7	93	14.4	52	8.0	48.4	51.6	0.9
7	2012	647	522	80.7	186	28.7	55	8.5	370	57.2	85	13.1	75	11.6	51.5	48.5	0.9
	2013	641	534	83.3	308	48.0	33	5.1	454	70.8	83	12.9	60	9.4	54.8	45.2	0.8
	2014	639	551	86.2	258	40.4	46	7.2	506	79.2	98	15.3	44	6.9	54.0	46.0	0.3
8	2012	649	506	78.0	177	27.3	30	4.6	388	59.8	64	9.9	74	11.4	50.7	49.3	3.1
	2013	607	496	81.7	159	26.2	56	9.2	363	59.8	82	13.5	49	8.1	53.0	47.0	1.6
	2014	586	490	83.6	202	34.5	30	5.1	463	79.0	80	13.7	46	7.8	54.6	45.4	0.5
6-8	2012	1,938	1,575	81.3	711	36.7	126	6.5	1,202	62.0	252	13.0	224	11.6	51.6	48.4	1.5
	2013	1,959	1,641	83.8	793	40.5	143	7.3	1,351	69.0	311	15.9	166	8.5	53.6	46.4	1.1
	2014	1,872	1,591	85.0	783	41.8	129	6.9	1,517	81.0	271	14.5	142	7.6	52.2	47.8	0.6

Grade	Year	Enrollment	Economically Disadvantaged		LEP		Special Education		At Risk		TAG		New (to District)		Gender		Retention Rate (%)
			N	%	N	%	N	%	N	%	N	%	N	%	% Male	% Female	
9	2012	720	519	72.1	214	29.7	57	7.9	452	62.8	76	10.6	118	16.4	54.3	45.7	8.5
	2013	707	507	71.7	174	24.6	30	4.2	405	57.3	69	9.8	102	14.4	49.9	50.1	5.9
	2014	688	522	75.9	183	26.6	50	7.3	475	69.0	76	11.0	113	16.4	53.5	46.5	7.8
10	2012	541	368	68.0	97	17.9	33	6.1	327	60.4	69	12.8	50	9.2	50.5	49.5	2.8
	2013	576	416	72.2	127	22.0	42	7.3	357	62.0	75	13.0	28	4.9	52.4	47.6	1.7
	2014	561	426	75.9	113	20.1	30	5.3	385	68.6	59	10.5	31	5.5	50.1	49.9	5.0
11	2012	543	400	73.7	96	17.7	25	4.6	354	65.2	71	13.1	48	8.8	49.2	50.8	1.1
	2013	518	340	65.6	56	10.8	34	6.6	327	63.1	61	11.8	38	7.3	51.7	48.3	1.2
	2014	500	360	72.0	103	20.6	42	8.4	344	68.8	59	11.8	40	8.0	50.8	49.2	3.4
12	2012	486	343	70.6	67	13.8	35	7.2	347	71.4	63	13.0	31	6.4	48.8	51.2	4.1
	2013	500	375	75.0	55	11.0	24	4.8	342	68.4	58	11.6	12	2.4	48.8	51.2	1.0
	2014	469	320	68.2	49	10.4	22	4.7	316	67.4	56	11.9	5	1.1	51.6	48.4	1.5
9-12	2012	2,290	1,630	71.2	474	20.7	150	6.6	1,480	64.6	279	12.2	247	10.8	51.0	49.0	4.5
	2013	2,301	1,638	71.2	412	17.9	130	5.6	1,431	62.2	263	11.4	180	7.8	50.7	49.3	2.7
	2014	2,218	1,628	73.4	448	20.2	144	6.5	1,520	68.5	250	11.3	189	8.5	51.6	48.4	4.8
ALL	2012	9,498	7,728	81.4	4,163	43.8	692	7.3	6,305	66.4	1,131	11.9	1,876	19.8	51.6	48.4	2.5
	2013	9,622	7,836	81.4	4,257	44.2	682	7.1	6,428	66.8	1,133	11.8	1,717	17.8	52.0	48.0	2.1
	2014	9,348	7,616	81.5	4,148	44.4	666	7.1	6,670	71.4	1,091	11.7	1,636	17.5	52.2	47.8	2.1

Grade	Year	Average Daily Membership		Average Daily Attendance				Yearly Transactions			Continuously Enrolled		Stability Rate	
		N	District	N	%	District N	District %	N	%	District %	N	District	%	District
KN	2012	887	13,633	862	97.1	13,086	96.0	144	16.2	19.9	789	11,731	88.9	86.0
	2013	925	14,067	887	95.9	13,411	95.3	137	14.8	20.0	822	12,178	88.9	86.6
	2014	883	13,618	849	96.2	13,058	95.9	112	12.7	19.8	772	11,271	87.4	82.8
1	2012	882	14,026	859	97.4	13,533	96.5	105	11.9	18.3	806	12,292	91.4	87.6
	2013	901	14,140	868	96.3	13,578	96.0	111	12.3	18.7	828	12,528	91.9	88.6
	2014	885	14,262	857	96.9	13,732	96.3	100	11.3	19.2	783	12,149	88.5	85.2
2	2012	789	13,338	772	97.8	12,932	97.0	108	13.7	16.8	722	11,883	91.5	89.1
	2013	836	13,555	810	96.8	13,077	96.5	106	12.7	17.1	773	12,206	92.4	90.0
	2014	812	13,652	789	97.2	13,209	96.8	101	12.4	17.0	737	11,868	90.8	86.9
3	2012	808	12,874	789	97.7	12,508	97.2	98	12.1	15.5	749	11,592	92.7	90.0
	2013	761	12,879	739	97.0	12,466	96.8	88	11.6	15.9	714	11,710	93.8	90.9
	2014	791	13,159	769	97.2	12,763	97.0	81	10.2	17.3	727	11,491	91.9	87.3
4	2012	757	12,493	740	97.8	12,139	97.2	98	13.0	16.6	697	11,218	92.1	89.8
	2013	717	12,406	697	97.1	12,029	97.0	88	12.3	16.5	664	11,339	92.5	91.4
	2014	725	12,543	706	97.4	12,180	97.1	97	13.4	16.3	661	11,075	91.1	88.3
5	2012	720	12,562	705	97.9	12,220	97.3	23	3.2	5.3	662	11,364	92.0	90.5
	2013	752	12,053	732	97.3	11,696	97.0	26	3.5	6.2	717	11,075	95.3	91.9
	2014	660	12,130	643	97.5	11,795	97.2	14	2.1	5.4	605	10,790	91.6	89.0
KN-5	2012	4,843	78,926	4,727	97.6	76,419	96.8	576	11.9	15.5	4,425	70,080	91.4	88.8
	2013	4,893	79,100	4,732	96.7	76,255	96.4	556	11.4	16.0	4,518	71,036	92.3	89.8
	2014	4,756	79,365	4,614	97.0	76,736	96.7	505	10.6	16.0	4,285	68,644	90.1	86.5

Grade	Year	Average Daily Membership		Average Daily Attendance				Yearly Transactions			Continuously Enrolled		Stability Rate	
		N	District	N	%	District N	District %	N	%	District %	N	District	%	District
6	2012	639	10,683	619	96.9	10,315	96.6	91	14.3	17.6	576	9,420	90.2	88.2
	2013	712	11,463	692	97.2	11,062	96.5	101	14.2	21.1	670	10,320	94.1	90.0
	2014	656	10,808	637	97.1	10,413	96.3	86	13.1	20.0	604	9,554	92.1	88.4
7	2012	644	10,204	621	96.5	9,727	95.3	107	16.6	23.8	574	8,576	89.2	84.0
	2013	642	10,542	621	96.6	10,116	96.0	97	15.1	24.5	596	9,357	92.8	88.8
	2014	645	11,195	623	96.6	10,729	95.8	82	12.7	22.1	593	9,852	92.0	88.0
8	2012	650	10,369	623	95.9	9,838	94.9	85	13.1	15.5	564	8,711	86.8	84.0
	2013	610	9,955	589	96.7	9,486	95.3	37	6.1	17.6	564	8,664	92.5	87.0
	2014	591	10,449	569	96.3	9,970	95.4	52	8.8	13.1	535	9,097	90.5	87.1
6-8	2012	1,932	31,256	1,863	96.4	29,880	95.6	283	14.6	18.9	1,714	26,707	88.7	85.4
	2013	1,964	31,960	1,902	96.9	30,665	96.0	235	12.0	21.1	1,830	28,341	93.2	88.7
	2014	1,892	32,451	1,829	96.7	31,112	95.9	220	11.6	18.5	1,732	28,503	91.6	87.8

Grade	Year	Average Daily Membership		Average Daily Attendance				Yearly Transactions			Continuously Enrolled		Stability Rate	
		N	District	N	%	District N	District %	N	%	District %	N	District	%	District
9	2012	730	10,922	697	95.4	10,196	93.3	158	21.6	27.8	621	8,726	85.0	79.9
	2013	716	11,153	683	95.4	10,499	94.1	138	19.3	28.3	635	9,388	88.7	84.2
	2014	696	10,850	669	96.2	10,242	94.4	119	17.1	28.4	610	9,091	87.7	83.8
10	2012	560	9,007	535	95.4	8,431	93.6	73	13.0	20.6	491	7,332	87.6	81.4
	2013	602	9,331	574	95.4	8,812	94.4	64	10.6	20.5	542	8,042	90.1	86.2
	2014	572	9,898	549	96.0	9,367	94.6	61	10.7	20.3	520	8,628	90.9	87.2
11	2012	561	8,913	534	95.3	8,306	93.2	65	11.6	15.9	496	7,319	88.4	82.1
	2013	545	8,457	519	95.1	7,949	94.0	58	10.6	18.9	490	7,295	89.8	86.3
	2014	520	8,467	498	95.7	8,005	94.5	51	9.8	18.1	481	7,476	92.5	88.3
12	2012	476	8,178	449	94.4	7,571	92.6	35	7.4	12.6	425	6,742	89.3	82.4
	2013	482	8,199	459	95.1	7,661	93.4	25	5.2	14.9	464	7,269	96.2	88.7
	2014	469	7,886	450	96.0	7,407	93.9	34	7.3	15.2	447	7,027	95.4	89.1
9-12	2012	2,328	37,021	2,215	95.2	34,504	93.2	331	14.2	19.8	2,033	30,119	87.3	81.4
	2013	2,345	37,140	2,234	95.3	34,922	94.0	285	12.2	21.2	2,131	31,994	90.9	86.1
	2014	2,257	37,101	2,166	96.0	35,021	94.4	265	11.7	21.1	2,058	32,222	91.2	86.8

Teachers: 571

DISTRIBUTIONS

Ethnicity/Race	Number	Percentage
African American	111	19.4
Hispanic	185	32.4
White	248	43.4
Multiple	8	1.4
Other	19	3.3

Gender	Number	Percentage
Female	419	73.4
Male	152	26.6

ATTENDANCE / RETENTION

	Average Absences	Retention Rate
2011-12	5.7	—
2012-13	7.5	76.2
2013-14	7.1	74.4

YEARS EXPERIENCE

Years	Number	Percentage
Beginning (0)	61	10.7
1	52	9.1
2	22	3.9
3	36	6.3
4	28	4.9
5	29	5.1
1-3	110	19.3
More than 3	400	70.1
1 - 5	167	29.2
6 - 10	135	23.6
11 - 20	129	22.6
More than 20	79	13.8

PERCENTAGE SATISFACTORY (Levels 2 or 3)

Grade	Year	White	African Amer	Hispanic	Econ Disadv	Special Educ	LEP	At Risk	Migrant	Male	Female	All	District	Number Tested (All Students)
3	2012	84.1	75.7	67.1	68.6	41.2	59.7	59.6		71.6	75.3	73.3	63.6	378
	2013	96.7	72.3	83.4	79.7	72.7	75.0	69.6		82.0	88.0	84.8	67.8	374
	2014	90.1	70.2	77.9	76.3	60.0	70.2	64.1		77.7	81.2	79.4	61.7	378
4	2012	90.6	57.3	71.7	68.9	44.4	64.4	51.2		69.9	73.2	71.6	64.3	356
	2013	84.0	73.8	67.0	67.0	38.9	47.7	53.8		69.8	75.3	72.3	62.3	329
	2014	80.5	73.4	75.1	73.2	36.4	73.1	57.2		74.5	79.1	76.5	59.4	366
5	2012	94.6	80.6	67.2	70.6	50.0	55.1	57.7		71.4	78.4	74.7	68.0	403
	2013	98.2	82.7	86.3	85.9	75.0	84.6	81.4		87.0	88.3	87.6	81.5	404
	2014	97.7	89.8	85.1	85.5	64.3	79.6	82.1		86.0	90.5	88.0	78.5	351
3-5	2012	89.5	70.2	68.6	69.5	45.3	58.9	56.7		71.0	75.7	73.3	65.5	1,137
	2013	93.9	76.4	79.6	78.2	62.3	72.1	70.6		80.1	84.4	82.1	71.1	1,107
	2014	87.9	76.6	79.7	78.4	56.0	75.8	69.6		79.3	83.5	81.2	66.7	1,095

NUMBER TESTED IN GRADES 3-5													
2012	172	218	668	825	64	253	476		590	547	1,137	22,173	
2013	197	229	609	781	53	222	395		592	514	1,107	21,619	
2014	206	222	592	747	50	207	526		598	497	1,095	21,304	

PERCENTAGE SATISFACTORY (Levels 2 or 3)

Grade	Year	White	African Amer	Hispanic	Econ Disadv	Special Educ	LEP	At Risk	Migrant	Male	Female	All	District	Number Tested (All Students)
6	2012	87.5	66.7	67.0	66.5	50.0	59.2	58.4		67.3	70.7	68.9	63.5	624
	2013	89.1	69.2	59.3	60.5	33.3	48.8	46.3		61.2	65.6	63.3	57.7	684
	2014	91.9	73.5	64.8	66.1	27.3	62.1	60.0	*	61.4	73.8	67.8	63.1	622
7	2012	89.8	82.4	69.2	69.7	11.1	51.2	57.6		68.3	77.4	72.8	67.5	607
	2013	100.0	68.7	67.1	67.9	28.6	58.1	57.5		66.3	73.3	69.5	67.3	620
	2014	83.7	84.2	62.3	64.3	36.4	44.5	50.9		62.9	70.4	66.4	60.5	613
8	2012	91.3	86.3	78.3	79.6	53.8	58.4	67.9		78.2	83.2	80.7	71.3	632
	2013	100.0	85.0	83.9	83.8	62.5	71.2	75.9		81.8	89.5	85.5	82.7	572
	2014	100.0	83.3	81.7	83.5	80.0	69.6	75.9		80.3	86.9	83.3	81.5	569
6-8	2012	89.6	79.4	71.4	71.8	37.7	56.9	61.2		71.2	77.2	74.2	67.4	1,863
	2013	95.6	74.0	69.3	69.8	39.7	56.7	58.2		69.1	75.5	72.1	68.6	1,876
	2014	90.4	80.0	69.3	71.0	44.1	59.0	62.0	*	68.2	76.6	72.2	68.2	1,804

NUMBER TESTED IN GRADES 6-8													
2012	135	238	1,436	1,477	53	664	965			946	917	1,863	29,211
2013	135	192	1,483	1,543	58	802	1,012			990	886	1,876	29,692
2014	115	185	1,450	1,421	59	831	1,241	2		937	867	1,804	30,015

NUMBER UNSATISFACTORY (Level 1)

Grade	Year	White	African Amer	Hispanic	Econ Disadv	Special Educ	LEP	At Risk	Migrant	Male	Female	All	District	Number Tested (All Students)
3	2012	10	18	68	80	10	25	67		58	43	101	2,466	378
	2013	3	23	29	51	3	10	45		37	20	57	2,181	374
	2014	8	25	42	64	10	14	56		44	34	78	2,649	378
4	2012	5	35	58	82	15	26	59		52	49	101	2,529	356
	2013	8	17	61	77	11	34	42		54	37	91	2,581	329
	2014	16	21	45	61	7	14	65		53	33	86	2,858	366
5	2012	3	12	84	90	10	53	80		61	41	102	2,665	403
	2013	1	14	34	42	6	18	29		27	23	50	1,484	404
	2014	1	6	33	36	5	22	39		27	15	42	1,582	351
3-5	2012	18	65	210	252	35	104	206		171	133	304	7,660	1,137
	2013	12	54	124	170	20	62	116		118	80	198	6,246	1,107
	2014	25	52	120	161	22	50	160		124	82	206	7,089	1,095

NUMBER TESTED IN GRADES 3-5													
2012	172	218	668	825	64	253	476		590	547	1,137	22,173	
2013	197	229	609	781	53	222	395		592	514	1,107	21,619	
2014	206	222	592	747	50	207	526		598	497	1,095	21,304	

NUMBER UNSATISFACTORY (Level 1)

Grade	Year	White	African Amer	Hispanic	Econ Disadv	Special Educ	LEP	At Risk	Migrant	Male	Female	All	District	Number Tested (All Students)
6	2012	5	23	163	175	11	136	154		106	88	194	3,673	624
	2013	6	20	220	231	14	172	204		139	112	251	4,523	684
	2014	3	18	176	166	16	134	190	*	115	85	200	3,679	622
7	2012	5	13	144	145	16	83	120		97	68	165	3,070	607
	2013	0	21	165	161	15	130	154		113	76	189	3,215	620
	2014	8	9	185	172	14	137	191		122	84	206	4,075	613
8	2012	4	13	103	97	6	67	100		69	53	122	2,786	632
	2013	0	9	71	74	6	45	65		54	29	83	1,586	572
	2014	0	10	84	74	3	70	91		61	34	95	1,797	569
6-8	2012	14	49	410	417	33	286	374		272	209	481	9,529	1,863
	2013	6	50	456	466	35	347	423		306	217	523	9,324	1,876
	2014	11	37	445	412	33	341	472	*	298	203	501	9,551	1,804

NUMBER TESTED IN GRADES 6-8													
2012	135	238	1,436	1,477	53	664	965		946	917	1,863	29,211	
2013	135	192	1,483	1,543	58	802	1,012		990	886	1,876	29,692	
2014	115	185	1,450	1,421	59	831	1,241	2	937	867	1,804	30,015	

PERCENTAGE ADVANCED (Level 3)

Grade	Year	White	African Amer	Hispanic	Econ Disadv	Special Educ	LEP	At Risk	Migrant	Male	Female	All	District	Number Tested (All Students)
3	2012	39.7	14.9	16.4	14.9	0.0	6.5	4.2		21.1	20.7	20.9	12.6	378
	2013	40.0	18.1	18.9	17.9	9.1	5.0	6.8		24.3	25.7	24.9	13.6	374
	2014	39.5	8.3	10.5	12.6	4.0	0.0	3.2		18.3	16.0	17.2	9.6	378
4	2012	32.1	15.9	12.2	10.6	3.7	6.8	5.0		15.6	15.8	15.7	11.2	356
	2013	38.0	18.5	15.1	15.0	5.6	7.7	7.7		22.9	18.7	21.0	13.5	329
	2014	24.4	8.9	18.2	15.4	0.0	13.5	6.6		16.8	22.2	19.1	12.0	366
5	2012	25.0	16.1	10.2	12.1	5.0	5.9	4.8		12.7	17.4	14.9	11.1	403
	2013	47.4	14.8	16.5	13.8	8.3	16.2	14.7		18.8	22.8	20.8	13.3	404
	2014	34.9	16.9	14.0	15.3	0.0	9.3	8.3		16.1	20.9	18.2	11.5	351
3-5	2012	32.6	15.6	12.7	12.5	3.1	6.3	4.6		16.4	17.9	17.2	11.6	1,137
	2013	41.6	17.0	16.7	15.5	7.5	11.7	10.1		22.0	22.6	22.2	13.5	1,107
	2014	32.5	10.8	14.2	14.3	2.0	8.2	6.3		17.1	19.5	18.2	11.1	1,095

NUMBER TESTED IN GRADE 3-5													
2012	172	218	668	825	64	253	476		590	547	1,137	22,173	
2013	197	229	609	781	53	222	395		592	514	1,107	21,619	
2014	206	222	592	747	50	207	526		598	497	1,095	21,304	

PERCENTAGE ADVANCED (Level 3)

Grade	Year	White	African Amer	Hispanic	Econ Disadv	Special Educ	LEP	At Risk	Migrant	Male	Female	All	District	Number Tested (All Students)
6	2012	25.0	8.7	8.3	8.6	4.5	4.2	4.1		11.4	8.7	10.1	8.3	624
	2013	38.2	18.5	9.6	10.4	4.8	3.0	3.4		15.1	12.3	13.7	11.3	684
	2014	24.3	10.3	5.4	6.3	4.5	4.0	2.9	*	7.0	7.4	7.2	7.1	622
7	2012	26.5	6.8	9.6	8.8	0.0	4.7	4.2		7.5	15.3	11.4	10.3	607
	2013	13.3	7.5	6.6	6.8	4.8	3.9	4.1		6.3	8.8	7.4	8.7	620
	2014	26.5	21.1	6.7	8.1	0.0	0.8	1.5		10.0	10.2	10.1	10.0	613
8	2012	34.8	17.9	10.9	10.1	0.0	3.1	4.5		11.4	17.1	14.2	9.9	632
	2013	34.0	21.7	14.9	14.0	6.3	6.4	8.5		14.8	21.1	17.8	15.5	572
	2014	31.0	8.3	12.0	13.4	6.7	4.8	5.3		11.0	15.8	13.2	13.1	569
6-8	2012	28.9	11.8	9.6	9.1	1.9	4.1	4.2		10.1	13.7	11.9	9.5	1,863
	2013	31.1	15.6	10.2	10.3	5.2	4.0	5.0		12.0	13.9	12.9	11.7	1,876
	2014	27.0	13.0	7.9	9.1	3.4	3.2	3.2	*	9.4	10.8	10.1	10.1	1,804

NUMBER TESTED IN GRADE 6-8													
2012	135	238	1,436	1,477	53	664	965		946	917	1,863	29,211	
2013	135	192	1,483	1,543	58	802	1,012		990	886	1,876	29,692	
2014	115	185	1,450	1,421	59	831	1,241	2	937	867	1,804	30,015	

AVERAGE PERCENTAGE OF ITEMS CORRECT BY REPORTING CATEGORY

Grade	Year	REPORTING CATEGORY		
		1. Understanding Across Genres (GR 3-5) 1. Understanding/Analysis Across Genres (GR 6-8)	2. Understanding/Analysis of Literary Texts	3. Understanding/Analysis of Informational Texts
3	2012	68.4	59.3	67.2
	2013	74.6	68.1	69.3
	2014	73.4	69.3	63.7
4	2012	65.6	66.0	61.1
	2013	71.1	64.9	65.2
	2014	69.2	65.7	63.9
5	2012	67.3	60.9	71.1
	2013	73.1	72.9	71.2
	2014	72.5	68.9	71.3
3-5	2012	67.1	61.9	66.7
	2013	73.0	68.9	68.8
	2014	71.7	68.0	66.2

AVERAGE PERCENTAGE OF ITEMS CORRECT BY REPORTING CATEGORY

Grade	Year	REPORTING CATEGORY		
		1. Understanding Across Genres (GR 3-5) 1. Understanding/Analysis Across Genres (GR 6-8)	2. Understanding/Analysis of Literary Texts	3. Understanding/Analysis of Informational Texts
6	2012	72.1	64.8	59.8
	2013	64.6	62.6	61.4
	2014	60.5	58.3	61.0
7	2012	72.1	60.6	65.5
	2013	58.3	58.2	66.9
	2014	63.4	58.6	57.4
8	2012	68.6	64.5	66.5
	2013	72.0	70.6	64.8
	2014	67.9	64.8	63.9
6-8	2012	70.9	63.3	63.9
	2013	64.8	63.6	64.3
	2014	63.8	60.4	60.7

PERCENTAGE SATISFACTORY (Levels 2 and 3)

Test	Year	White	African Amer	Hispanic	Econ Disadv	Special Educ	LEP	At Risk	Migrant	Male	Female	All	District
ENGLISH I	2012												
	2013												
	2014	77.0	43.8	53.5	53.5	13.7	25.1	37.4		47.9	64.1	55.1	50.9
Tests Taken	2012												
	2013												
	2014	74	80	649	609	51	207	548		457	370	827	13,789
ENGLISH II	2012												
	2013												
	2014	81.0	63.5	56.0	53.1	14.3	27.9	42.0		54.6	64.8	59.6	54.8
Tests Taken	2012												
	2013												
	2014	58	74	493	424	28	147	421		326	318	644	10,943

NUMBER UNSATISFACTORY (Level 1)

Test	Year	White	African Amer	Hispanic	Econ Disadv	Special Educ	LEP	At Risk	Migrant	Male	Female	All	District
ENGLISH I	2012												
	2013												
	2014	17	45	302	283	44	155	343		238	133	371	6,774
Tests Taken	2012												
	2013												
	2014	74	80	649	609	51	207	548		457	370	827	13,789
ENGLISH II	2012												
	2013												
	2014	11	27	217	199	24	106	244		148	112	260	4,948
Tests Taken	2012												
	2013												
	2014	58	74	493	424	28	147	421		326	318	644	10,943

PERCENTAGE ADVANCED (Level 3)

Test	Year	White	African Amer	Hispanic	Econ Disadv	Special Educ	LEP	At Risk	Migrant	Male	Female	All	District
ENGLISH I	2012												
	2013												
	2014	9.5	3.8	2.0	2.6	2.0	0.0	0.0		1.5	4.6	2.9	3.2
Tests Taken	2012												
	2013												
	2014	74	80	649	609	51	207	548		457	370	827	13,789
ENGLISH II	2012												
	2013												
	2014	6.9	1.4	1.0	0.9	0.0	0.0	0.0		0.3	3.5	1.9	2.7
Tests Taken	2012												
	2013												
	2014	58	74	493	424	28	147	421		326	318	644	10,943

AVERAGE PERCENTAGE OF ITEMS CORRECT BY REPORTING CATEGORY

ENGLISH I	1. Understanding & Analysis Across Genres	1. Average Rating Short Answer #1 ¹	1. Average Rating Short Answer #2 ¹	2. Understanding & Analysis of Literary Texts	3. Understanding & Analysis of Informational Texts	4. Expository Composition ²	5. Revision	6. Editing
2012								
2013								
2014	63.7	1.2	1.2	64.0	59.9	4.2	68.6	54.6

ENGLISH II	1. Understanding & Analysis Across Genres	1. Average Rating Short Answer #1 ¹	1. Average Rating Short Answer #2 ¹	2. Understanding & Analysis of Literary Texts	3. Understanding & Analysis of Informational Texts	4. Persuasive Composition ²	5. Revision	6. Editing
2012								
2013								
2014	76.4	1.0	1.2	54.6	67.3	4.3	66.9	69.2

¹Short answer rating scale: 0=Insufficient; 1=Partially Sufficient; 2=Sufficient; 3=Exemplary

²Average score points (0-8). A composition is rated twice on a scale of 1 to 4, and the ratings are summed to determine score points for the composition. Score point scale: 0=Nonscorable; 2=Very Limited; 3=between Very Limited and Basic; 4=Basic; 5=between Basic and Satisfactory; 6=Satisfactory; 7=between Satisfactory and Accomplished; 8=Accomplished

PERCENTAGE SATISFACTORY (Levels 2 or 3)

Grade	Year	White	African Amer	Hispanic	Econ Disadv	Special Educ	LEP	At Risk	Migrant	Male	Female	All	District	Number Tested (All Students)
4	2012	84.9	66.7	62.7	63.6	33.3	52.5	49.2		60.5	74.6	67.7	60.6	362
	2013	80.0	59.7	67.2	62.7	26.7	50.9	50.0		64.2	74.5	68.9	63.9	322
	2014	81.9	67.5	78.0	71.5	30.0	75.0	58.7		72.3	82.4	76.7	61.9	361

NUMBER TESTED IN GRADE 4													
2012	53	81	212	272	27	80	130		177	185	362	7,039	
2013	50	67	177	228	15	57	84		173	149	322	6,771	
2014	83	77	177	228	10	48	150		202	159	361	7,022	

PERCENTAGE SATISFACTORY (Levels 2 or 3)

Grade	Year	White	African Amer	Hispanic	Econ Disadv	Special Educ	LEP	At Risk	Migrant	Male	Female	All	District	Number Tested (All Students)
7	2012	85.7	70.7	65.5	65.6	17.6	45.6	50.9		59.8	76.5	68.1	59.2	608
	2013	80.6	65.7	55.5	57.6	33.3	44.9	42.9		51.9	67.3	58.9	57.1	623
	2014	70.0	80.7	51.2	55.6	20.8	27.7	38.5		52.9	59.6	56.0	54.6	620

NUMBER TESTED IN GRADE 7													
2012	49	75	467	480	17	169	285		306	302	608	9,456	
2013	31	67	503	502	21	312	366		339	284	623	9,785	
2014	50	57	496	487	24	253	397		333	287	620	10,339	

NUMBER UNSATISFACTORY (Level 1)

Grade	Year	White	African Amer	Hispanic	Econ Disadv	Special Educ	LEP	At Risk	Migrant	Male	Female	All	District	Number Tested (All Students)
4	2012	8	27	79	99	18	38	66		70	47	117	2,772	362
	2013	10	27	58	85	11	28	42		62	38	100	2,442	322
	2014	15	25	39	65	7	12	62		56	28	84	2,675	361

NUMBER TESTED IN GRADE 4													
2012	53	81	212	272	27	80	130		177	185	362	7,039	
2013	50	67	177	228	15	57	84		173	149	322	6,771	
2014	83	77	177	228	10	48	150		202	159	361	7,022	

NUMBER UNSATISFACTORY (Level 1)

Grade	Year	White	African Amer	Hispanic	Econ Disadv	Special Educ	LEP	At Risk	Migrant	Male	Female	All	District	Number Tested (All Students)
7	2012	7	22	161	165	14	92	140		123	71	194	3,859	608
	2013	6	23	224	213	14	172	209		163	93	256	4,198	623
	2014	15	11	242	216	19	183	244		157	116	273	4,690	620

NUMBER TESTED IN GRADE 7													
2012	49	75	467	480	17	169	285		306	302	608	9,456	
2013	31	67	503	502	21	312	366		339	284	623	9,785	
2014	50	57	496	487	24	253	397		333	287	620	10,339	

PERCENTAGE ADVANCED (Level 3)

Grade	Year	White	African Amer	Hispanic	Econ Disadv	Special Educ	LEP	At Risk	Migrant	Male	Female	All	District	Number Tested (All Students)
4	2012	13.2	3.7	2.8	2.2	0.0	1.3	0.8		2.3	7.0	4.7	5.1	362
	2013	18.0	3.0	2.8	3.5	0.0	1.8	1.2		9.2	4.0	6.8	4.7	322
	2014	9.6	2.6	4.5	5.3	0.0	0.0	0.7		3.5	8.2	5.5	3.7	361

NUMBER TESTED IN GRADE 4													
2012	53	81	212	272	27	80	130		177	185	362	7,039	
2013	50	67	177	228	15	57	84		173	149	322	6,771	
2014	83	77	177	228	10	48	150		202	159	361	7,022	

PERCENTAGE ADVANCED (Level 3)

Grade	Year	White	African Amer	Hispanic	Econ Disadv	Special Educ	LEP	At Risk	Migrant	Male	Female	All	District	Number Tested (All Students)
7	2012	10.2	4.0	2.6	2.1	0.0	0.0	0.4		1.6	5.3	3.5	3.4	608
	2013	3.2	0.0	0.0	0.2	0.0	0.0	0.0		0.0	0.4	0.2	1.5	623
	2014	2.0	3.5	0.8	0.8	0.0	0.0	0.0		0.0	3.1	1.5	3.0	620

NUMBER TESTED IN GRADE 7													
2012	49	75	467	480	17	169	285		306	302	608	9,456	
2013	31	67	503	502	21	312	366		339	284	623	9,785	
2014	50	57	496	487	24	253	397		333	287	620	10,339	

AVERAGE PERCENTAGE OF ITEMS CORRECT BY REPORTING CATEGORY

Grade	Year	REPORTING CATEGORY			
		1. Composition ¹ GR 4: Personal Narrative GR 7: Expository	1. Composition ¹ GR 4: Expository GR 7: Personal Narrative	2. Revision	3. Editing
4	2012	2.1	1.9	64.3	59.9
	2013	4.3	3.9	60.5	66.5
	2014	4.3	4.2	70.3	63.1
7	2012	1.9	2.3	67.4	61.2
	2013	4.0	4.6	62.5	60.9
	2014	3.8	4.4	63.5	56.1

¹Average score points (range 0-8). A STAAR composition is rated twice on a scale of 1 to 4, and the ratings are summed to determine score points for the composition. Score point scale: 0=Non-scorable; 2=Very Limited; 3=between Very Limited and Basic; 4=Basic; 5=between Basic and Satisfactory; 6=Satisfactory; 7=between Satisfactory and Accomplished; 8=Accomplished

PERCENTAGE SATISFACTORY (Levels 2 or 3)

Grade	Year	White	African Amer	Hispanic	Econ Disadv	Special Educ	LEP	At Risk	Migrant	Male	Female	All	District	Number Tested (All Students)
3	2012	74.6	46.1	59.7	57.5	25.8	59.4	54.8		60.4	59.6	60.1	55.4	771
	2013	84.4	62.2	66.4	65.8	73.7	65.8	62.1		69.3	68.2	68.7	57.5	728
	2014	85.0	67.1	71.6	71.3	56.3	67.8	65.8		72.4	72.7	72.5	59.3	710
4	2012	83.0	47.0	64.7	62.5	34.2	64.8	61.2		63.9	64.1	64.0	53.0	717
	2013	74.0	50.7	61.2	58.9	23.1	59.3	57.8		61.3	60.6	61.0	57.5	666
	2014	80.5	73.8	74.5	74.9	63.2	74.9	68.8		77.5	73.2	75.5	59.0	677
5	2012	82.1	58.1	76.5	74.9	36.0	75.1	70.8		74.4	76.5	75.4	64.1	679
	2013	94.8	79.5	87.3	86.4	76.0	88.6	86.6		84.7	89.8	87.2	81.7	713
	2014	93.0	87.1	87.1	86.8	85.7	86.4	86.0		88.2	86.2	87.3	81.4	614
3-5	2012	79.7	49.8	66.6	64.6	31.9	66.1	61.8		65.9	66.4	66.2	57.5	2,167
	2013	84.8	64.8	72.0	70.6	55.7	71.7	69.0		71.7	73.5	72.5	65.3	2,107
	2014	84.9	74.9	77.5	77.3	66.7	76.4	73.6		79.1	76.9	78.1	66.3	2,001

NUMBER TESTED IN GRADES 3-5													
2012	172	221	1,694	1,826	94	1,259	1,373		1,098	1,069	2,167	35,372	
2013	198	227	1,608	1,752	70	1,192	1,373		1,090	1,016	2,107	34,686	
2014	205	227	1,492	1,596	72	1,083	1,412		1,057	944	2,001	35,222	

PERCENTAGE SATISFACTORY (Levels 2 or 3)

Grade	Year	White	African Amer	Hispanic	Econ Disadv	Special Educ	LEP	At Risk	Migrant	Male	Female	All	District	Number Tested (All Students)
6	2012	87.2	59.4	74.7	73.5	40.9	72.9	67.9		74.8	72.8	73.8	66.4	607
	2013	83.3	60.0	73.5	71.6	26.1	69.6	62.5		74.0	72.6	73.3	60.6	671
	2014	86.5	59.4	70.8	70.3	36.0	69.5	64.3	*	67.7	72.8	70.3	64.3	620
7	2012	95.9	64.0	74.9	72.9	40.0	64.1	61.0		73.3	77.6	75.4	59.9	594
	2013	83.3	43.3	66.3	64.5	33.3	62.2	56.6		63.6	67.2	65.2	59.9	601
	2014	72.3	63.8	63.4	63.5	8.7	49.8	50.7		62.0	66.8	64.2	55.1	606
8	2012	80.0	67.9	69.9	69.7	66.7	62.9	62.7		72.0	68.2	70.1	51.9	469
	2013	64.3	71.7	84.4	81.7	41.2	83.1	77.0		79.1	84.7	81.8	74.0	347
	2014	86.7	74.1	76.3	76.2	61.5	70.4	69.7		76.0	77.8	76.8	73.2	448
6-8	2012	89.8	64.0	73.4	72.2	46.3	68.4	64.2		73.5	73.2	73.4	60.3	1,670
	2013	80.6	56.7	73.1	71.2	32.8	68.8	63.6		71.1	73.3	72.1	63.7	1,619
	2014	79.8	65.2	69.7	69.5	31.1	63.7	61.3	*	68.0	71.9	69.8	63.3	1,674

NUMBER TESTED IN GRADES 6-8													
2012	108	222	1,294	1,340	54	610	920			863	807	1,670	26,044
2013	98	178	1,287	1,351	61	728	920			854	765	1,619	26,676
2014	99	181	1,348	1,325	61	776	1,177	2		877	797	1,674	27,304

NUMBER UNSATISFACTORY (Level 1)

Grade	Year	White	African Amer	Hispanic	Econ Disadv	Special Educ	LEP	At Risk	Migrant	Male	Female	All	District	Number Tested (All Students)
3	2012	16	41	241	273	23	179	247		159	149	308	5,287	771
	2013	14	31	178	203	5	132	188		119	108	228	5,086	728
	2014	12	28	148	167	14	118	163		100	95	195	4,988	710
4	2012	9	44	199	229	25	151	186		126	132	258	5,511	717
	2013	13	33	202	231	20	157	175		136	124	260	4,919	666
	2014	16	21	125	131	7	89	143		82	84	166	4,803	677
5	2012	10	26	125	144	16	97	134		89	78	167	4,228	679
	2013	3	16	71	81	6	48	62		54	37	91	2,035	713
	2014	3	8	62	65	3	49	67		39	39	78	2,088	614
3-5	2012	35	111	565	646	64	427	567		374	359	733	15,026	2,167
	2013	30	80	451	515	31	337	425		309	269	579	12,040	2,107
	2014	31	57	335	363	24	256	373		221	218	439	11,879	2,001

NUMBER TESTED IN GRADES 3-5													
2012	172	221	1,694	1,826	94	1,259	1,373		1,098	1,069	2,167	35,372	
2013	198	227	1,608	1,752	70	1,192	1,373		1,090	1,016	2,107	34,686	
2014	205	227	1,492	1,596	72	1,083	1,412		1,057	944	2,001	35,222	

NUMBER UNSATISFACTORY (Level 1)

Grade	Year	White	African Amer	Hispanic	Econ Disadv	Special Educ	LEP	At Risk	Migrant	Male	Female	All	District	Number Tested (All Students)
6	2012	5	28	121	134	13	85	115		80	79	159	3,327	607
	2013	9	26	140	163	17	97	137		91	88	179	4,133	671
	2014	5	28	145	145	16	107	169	*	96	88	184	3,478	620
7	2012	2	27	114	127	12	56	108		80	66	146	3,705	594
	2013	5	38	163	173	14	110	150		119	90	209	3,851	601
	2014	13	21	177	173	21	120	188		124	93	217	4,536	606
8	2012	4	25	109	111	4	52	107		69	71	140	3,319	469
	2013	5	13	43	53	10	20	48		37	26	63	1,709	347
	2014	2	14	87	86	5	55	98		61	43	104	2,001	448
6-8	2012	11	80	344	372	29	193	330		229	216	445	10,351	1,670
	2013	19	77	346	389	41	227	335		247	204	451	9,693	1,619
	2014	20	63	409	404	42	282	455	*	281	224	505	10,015	1,674

NUMBER TESTED IN GRADES 6-8													
2012	108	222	1,294	1,340	54	610	920		863	807	1,670	26,044	
2013	98	178	1,287	1,351	61	728	920		854	765	1,619	26,676	
2014	99	181	1,348	1,325	61	776	1,177	2	877	797	1,674	27,304	

PERCENTAGE ADVANCED (Level 3)

Grade	Year	White	African Amer	Hispanic	Econ Disadv	Special Educ	LEP	At Risk	Migrant	Male	Female	All	District	Number Tested (All Students)
3	2012	25.4	3.9	7.9	7.6	0.0	7.5	6.2		11.9	6.8	9.5	7.9	771
	2013	27.8	12.2	11.5	11.4	10.5	9.3	8.1		14.7	14.4	14.6	9.1	728
	2014	22.5	17.6	13.1	13.4	6.3	12.0	11.3		13.3	16.7	14.9	10.4	710
4	2012	17.0	3.6	9.9	9.3	7.9	11.0	9.8		10.0	9.8	9.9	6.1	717
	2013	24.0	3.0	9.4	8.4	0.0	7.0	6.5		11.7	9.8	10.8	9.5	666
	2014	32.9	17.5	16.9	18.2	5.3	16.1	13.1		21.2	18.5	19.9	14.0	677
5	2012	26.8	11.3	17.7	17.3	4.0	17.2	15.3		19.9	16.3	18.1	10.4	679
	2013	46.6	5.1	19.0	17.6	16.0	19.8	18.2		19.9	19.9	19.9	12.8	713
	2014	39.5	12.9	20.4	19.6	4.8	19.9	16.1		21.1	21.9	21.5	15.7	614
3-5	2012	23.3	5.9	11.6	11.2	4.3	11.7	10.2		13.8	10.8	12.3	8.1	2,167
	2013	32.3	7.0	13.4	12.6	8.6	12.2	11.0		15.4	15.0	15.2	10.4	2,107
	2014	30.2	16.3	16.7	16.9	5.6	16.0	13.5		18.4	18.9	18.6	13.3	2,001

NUMBER TESTED IN GRADE 3-5													
2012	172	221	1,694	1,826	94	1,259	1,484		1,098	1,069	2,167	35,372	
2013	198	227	1,608	1,752	70	1,192	1,373		1,090	1,016	2,107	34,686	
2014	205	227	1,492	1,596	72	1,083	1,412		1,057	944	2,001	35,222	

PERCENTAGE ADVANCED (Level 3)

Grade	Year	White	African Amer	Hispanic	Econ Disadv	Special Educ	LEP	At Risk	Migrant	Male	Female	All	District	Number Tested (All Students)
6	2012	20.5	5.8	13.2	12.1	4.5	10.8	9.2		13.6	12.8	13.2	9.8	607
	2013	29.6	7.7	11.4	12.0	0.0	7.2	5.8		15.4	11.5	13.6	8.5	671
	2014	40.5	0.0	8.0	8.2	8.0	6.3	4.9	*	10.1	8.4	9.2	9.6	620
7	2012	20.4	8.0	10.1	9.6	0.0	7.1	5.4		12.3	9.9	11.1	6.3	594
	2013	6.7	0.0	5.0	4.7	0.0	4.1	2.9		4.3	5.5	4.8	4.8	601
	2014	19.1	10.3	5.4	6.1	0.0	1.7	1.3		8.0	6.8	7.4	6.7	606
8	2012	5.0	2.6	1.9	2.5	0.0	1.4	1.0		2.8	1.8	2.3	0.4	469
	2013	7.1	2.2	1.8	1.7	5.9	0.8	0.5		1.7	2.4	2.0	0.9	347
	2014	0.0	0.0	2.2	1.9	0.0	1.1	1.2		2.4	1.5	2.0	1.0	448
6-8	2012	17.6	5.4	9.0	8.6	1.9	7.7	5.5		10.1	8.7	9.4	6.1	1,670
	2013	19.4	3.4	6.9	7.2	1.6	4.9	3.5		8.3	7.3	7.8	5.3	1,619
	2014	24.2	3.3	5.5	5.7	3.3	3.6	2.7	*	7.1	6.1	6.6	6.2	1,674

NUMBER TESTED IN GRADE 6-8													
2012	108	222	1,294	1,340	54	610	922			863	807	1,670	26,044
2013	98	178	1,287	1,351	61	728	920			854	765	1,619	26,676
2014	99	181	1,348	1,325	61	776	1,177	2		877	797	1,674	27,304

AVERAGE PERCENTAGE OF ITEMS CORRECT BY REPORTING CATEGORY

Grade	Year	REPORTING CATEGORY				
		1. Numbers, Operations, and Quantitative Reasoning	2. Patterns, Relationships, and Algebraic Reasoning	3. Geometry and Spatial Reasoning	4. Measurement	5. Probability and Statistics
3	2012	61.1	60.4	70.5	60.6	49.8
	2013	65.2	62.2	73.2	72.1	70.5
	2014	71.7	68.9	68.0	70.3	66.1
4	2012	65.6	65.7	67.8	55.4	61.2
	2013	65.2	65.6	70.1	62.6	53.4
	2014	70.0	75.2	76.1	66.4	69.5
5	2012	66.3	65.6	67.3	62.3	68.3
	2013	71.5	68.2	70.2	65.6	72.6
	2014	73.0	69.8	73.3	66.4	72.4
3-5	2012	64.2	63.8	68.6	59.4	59.4
	2013	67.3	65.3	71.2	66.9	65.8
	2014	71.5	71.3	72.4	67.8	69.2

AVERAGE PERCENTAGE OF ITEMS CORRECT BY REPORTING CATEGORY

Grade	Year	REPORTING CATEGORY				
		1. Numbers, Operations, and Quantitative Reasoning	2. Patterns, Relationships, and Algebraic Reasoning	3. Geometry and Spatial Reasoning	4. Measurement	5. Probability and Statistics
6	2012	53.9	61.1	56.5	51.2	56.1
	2013	60.9	60.8	56.2	50.0	57.1
	2014	55.4	53.8	55.7	51.2	57.3
7	2012	58.0	59.2	61.5	53.4	54.2
	2013	52.8	55.9	56.4	43.4	45.1
	2014	59.8	51.7	48.6	48.3	55.8
8	2012	52.7	49.0	45.4	45.3	50.4
	2013	52.3	54.8	48.6	48.1	49.8
	2014	51.4	51.6	47.8	44.1	55.3
6-8	2012	55.0	57.0	55.2	50.3	53.8
	2013	56.0	57.7	54.6	47.2	51.1
	2014	55.9	52.5	51.0	48.2	56.2

PERCENTAGE SATISFACTORY (Levels 2 or 3)

Test	Year	White	African Amer	Hispanic	Econ Disadv	Special Educ	LEP	At Risk	Migrant	Male	Female	All	District
ALGEBRA I	2012	92.6	75.9	79.6	79.7	44.1	63.9	66.5		77.0	84.3	80.6	74.7
	2013	90.8	72.6	76.7	76.7	66.7	69.0	65.1		77.2	79.1	78.1	72.5
	2014	82.9	69.6	76.3	75.8	56.0	66.7	67.3		74.4	78.9	76.7	78.0
Tests Taken	2012	54	79	421	404	34	119	301		287	281	568	8,795
	2013	65	84	503	486	12	129	301		347	320	667	9,251
	2014	35	46	375	363	25	111	284		234	242	476	9,524

NUMBER UNSATISFACTORY (Level 1)

Test	Year	White	African Amer	Hispanic	Econ Disadv	Special Educ	LEP	At Risk	Migrant	Male	Female	All	District
ALGEBRA I	2012	4	19	86	82	19	43	91		66	44	110	2,226
	2013	6	23	117	113	4	40	105		79	67	146	2,540
	2014	6	14	89	88	11	37	93		60	51	111	2,099
Tests Taken	2012	54	79	421	404	34	119	301		287	281	568	8,795
	2013	65	84	503	486	12	129	301		347	320	667	9,251
	2014	35	46	375	363	25	111	284		234	242	476	9,524

PERCENTAGE ADVANCED (Level 3)

Test	Year	White	African Amer	Hispanic	Econ Disadv	Special Educ	LEP	At Risk	Migrant	Male	Female	All	District
ALGEBRA I	2012	14.8	10.1	9.5	10.6	0.0	5.0	3.3		8.4	12.8	10.6	7.0
	2013	16.9	6.0	5.6	6.0	0.0	0.8	1.3		7.8	6.9	7.3	8.6
	2014	8.6	2.2	6.1	6.1	0.0	2.7	1.8		4.3	8.7	6.5	9.9
Tests Taken	2012	54	79	421	404	34	119	272		287	281	568	8,795
	2013	65	84	503	486	12	129	301		347	320	667	9,251
	2014	35	46	375	363	25	111	284		234	242	476	9,524

AVERAGE PERCENTAGE OF ITEMS CORRECT BY REPORTING CATEGORY

ALGEBRA I	1. Functional Relationships	2. Properties and Attributes of Functions	3. Linear Functions	4. Linear Equations and Inequalities	5. Quadratic and Other Nonlinear Functions
2012	60.2	51.1	53.2	50.8	51.6
2013	54.2	46.5	51.0	53.8	48.9
2014	48.6	47.0	52.9	50.6	47.9

PERCENTAGE SATISFACTORY (Levels 2 or 3)

Grade	Year	White	African Amer	Hispanic	Econ Disadv	Special Educ	LEP	At Risk	Migrant	Male	Female	All	District	Number Tested (All Students)
5	2012	77.8	67.7	60.2	61.1	35.7	55.5	52.7		66.5	58.7	62.7	58.2	649
	2013	93.1	72.2	70.4	70.4	57.7	68.9	67.6		74.8	71.3	73.0	65.1	633
	2014	88.4	79.0	66.8	67.5	42.9	61.7	62.5		72.1	68.8	70.6	61.3	540

NUMBER TESTED IN GRADE 5													
2012	54	62	505	545	28	362	431		334	315	649	10,697	
2013	58	79	476	520	26	341	383		309	324	633	10,180	
2014	43	62	407	425	21	290	405		290	250	540	9,073	

PERCENTAGE SATISFACTORY (Levels 2 or 3)

Grade	Year	White	African Amer	Hispanic	Econ Disadv	Special Educ	LEP	At Risk	Migrant	Male	Female	All	District	Number Tested (All Students)
8	2012	90.9	76.9	68.1	69.3	53.8	46.7	55.1		76.6	66.6	71.5	54.0	611
	2013	98.0	74.6	82.0	81.9	55.6	75.7	69.6		84.3	82.1	83.2	65.8	555
	2014	85.7	66.1	73.7	72.5	42.9	60.7	62.9		73.1	75.0	74.0	61.9	549

NUMBER TESTED IN GRADE 8													
2012	44	91	461	456	13	150	296		303	308	611	9,431	
2013	50	59	428	442	18	140	257		287	268	555	8,998	
2014	28	59	441	407	14	211	361		297	252	549	9,466	

NUMBER UNSATISFACTORY (Level 1)

Grade	Year	White	African Amer	Hispanic	Econ Disadv	Special Educ	LEP	At Risk	Migrant	Male	Female	All	District	Number Tested (All Students)
5	2012	12	20	201	212	18	161	204		112	130	242	4476	649
	2013	4	22	141	154	11	106	124		78	93	171	3551	633
	2014	5	13	135	138	12	111	152		81	78	159	3511	540

NUMBER TESTED IN GRADE 5													
2012	54	62	505	545	28	362	431		334	315	649	10,697	
2013	58	79	476	520	26	341	383		309	324	633	10,180	
2014	43	62	407	425	21	290	405		290	250	540	9,073	

NUMBER UNSATISFACTORY (Level 1)

Grade	Year	White	African Amer	Hispanic	Econ Disadv	Special Educ	LEP	At Risk	Migrant	Male	Female	All	District	Number Tested (All Students)
8	2012	4	21	147	140	6	80	133		71	103	174	4335	611
	2013	1	15	77	80	8	34	78		45	48	93	3074	555
	2014	4	20	116	112	8	83	134		80	63	143	3605	549

NUMBER TESTED IN GRADE 8													
2012	44	91	461	456	13	150	296		303	308	611	9,431	
2013	50	59	428	442	18	140	257		287	268	555	8,998	
2014	28	59	441	407	14	211	361		297	252	549	9,466	

PERCENTAGE ADVANCED (Level 3)

Grade	Year	White	African Amer	Hispanic	Econ Disadv	Special Educ	LEP	At Risk	Migrant	Male	Female	All	District	Number Tested (All Students)
5	2012	20.4	8.1	5.9	5.9	0.0	4.7	4.2		8.4	7.0	7.7	6.5	649
	2013	31.0	6.3	6.1	6.2	7.7	4.4	4.7		9.1	8.6	8.8	6.6	633
	2014	23.3	8.1	4.7	5.2	0.0	3.4	3.5		8.6	5.2	7.0	5.3	540

NUMBER TESTED IN GRADE 5													
2012	54	62	505	545	28	362	431		334	315	649	10,697	
2013	58	79	476	520	26	341	383		309	324	633	10,180	
2014	43	62	407	425	21	290	405		290	250	540	9,073	

PERCENTAGE ADVANCED (Level 3)

Grade	Year	White	African Amer	Hispanic	Econ Disadv	Special Educ	LEP	At Risk	Migrant	Male	Female	All	District	Number Tested (All Students)
8	2012	22.7	4.4	5.2	5.5	0.0	0.0	1.0		8.3	6.5	7.4	4.2	611
	2013	26.0	8.5	7.9	7.7	0.0	4.3	4.7		14.3	6.0	10.3	7.1	555
	2014	21.4	6.8	14.5	13.8	7.1	8.1	6.1		14.1	15.9	14.9	11.3	549

NUMBER TESTED IN GRADE 8													
2012	44	91	461	456	13	150	296		303	308	611	9,431	
2013	50	59	428	442	18	140	257		287	268	555	8,998	
2014	28	59	441	407	14	211	361		297	252	549	9,466	

AVERAGE PERCENTAGE OF ITEMS CORRECT BY REPORTING CATEGORY

Grade	Year	REPORTING CATEGORY			
		1. Matter and Energy	2. Force, Motion, and Energy	3. Earth and Space	4. Organisms and Environments
5	2012	74.5	76.8	67.4	64.0
	2013	70.2	73.3	65.1	66.3
	2014	68.4	67.7	63.8	68.3
8	2012	63.3	59.9	63.4	62.0
	2013	72.1	61.3	66.4	62.8
	2014	68.1	61.4	63.6	70.7

PERCENTAGE SATISFACTORY (Levels 2 and 3)

Test	Year	White	African Amer	Hispanic	Econ Disadv	Special Educ	LEP	At Risk	Migrant	Male	Female	All	District
BIOLOGY	2012	94.2	78.1	82.6	83.4	47.2	69.9	72.6		82.1	85.3	83.6	82.9
	2013	98.3	90.0	82.5	86.2	66.7	68.8	72.2		86.4	84.5	85.4	84.4
	2014	100.0	86.3	91.0	90.8	77.8	81.0	85.7		90.6	93.1	91.8	89.8
Tests Taken	2012	69	73	430	403	36	123	292		313	273	586	8,881
	2013	59	90	452	427	12	109	263		301	317	618	9,374
	2014	71	51	456	437	27	100	314		308	289	597	9,672

NUMBER UNSATISFACTORY (Level 1)

Test	Year	White	African Amer	Hispanic	Econ Disadv	Special Educ	LEP	At Risk	Migrant	Male	Female	All	District
BIOLOGY	2012	4	16	75	67	19	37	80		56	40	96	1,522
	2013	1	9	79	59	4	34	73		41	49	90	1,467
	2014	0	7	41	40	6	19	45		29	20	49	987
Tests Taken	2012	69	73	430	403	36	123	292		313	273	586	8,881
	2013	59	90	452	427	12	109	263		301	317	618	9,374
	2014	71	51	456	437	27	100	314		308	289	597	9,672

PERCENTAGE ADVANCED (Level 3)

Test	Year	White	African Amer	Hispanic	Econ Disadv	Special Educ	LEP	At Risk	Migrant	Male	Female	All	District
BIOLOGY	2012	17.4	0.0	2.1	1.7	0.0	0.0	0.3		6.1	1.8	4.1	4.8
	2013	22.0	5.6	3.5	3.7	0.0	0.0	0.8		6.6	6.0	6.3	7.5
	2014	16.9	2.0	3.3	3.7	0.0	0.0	0.6		6.2	4.2	5.2	7.5
Tests Taken	2012	69	73	430	403	36	123	292		313	273	586	8,881
	2013	59	90	452	427	12	109	263		301	317	618	9,374
	2014	71	51	456	437	27	100	314		308	289	597	9,672

AVERAGE PERCENTAGE OF ITEMS CORRECT BY REPORTING CATEGORY

BIOLOGY	1. Cell Structure and Function	2. Mechanisms of Genetics	3. Biological Evolution and Classification	4. Biological Processes and Systems	5. Interdependence within Environmental Systems
2012	49.0	48.9	58.3	47.7	55.8
2013	52.1	51.5	61.5	53.9	56.2
2014	45.7	57.6	64.9	60.6	54.6

PERCENTAGE SATISFACTORY (Levels 2 or 3)

Grade	Year	White	African Amer	Hispanic	Econ Disadv	Special Educ	LEP	At Risk	Migrant	Male	Female	All	District	Number Tested (All Students)
8	2012	86.4	73.6	60.9	63.8	46.2	38.7	48.1		69.4	61.9	65.6	52.5	608
	2013	90.2	74.6	68.5	69.5	50.0	55.7	54.2		71.2	72.1	71.6	59.3	557
	2014	78.6	62.7	57.2	57.1	35.7	42.9	45.8		61.6	57.6	59.8	53.5	547

NUMBER TESTED IN GRADE 8													
2012	44	91	458	453	13	150	293		301	307	608	9,392	
2013	51	59	428	443	20	140	260		288	269	557	8,991	
2014	28	59	439	406	14	210	360		297	250	547	9,464	

NUMBER UNSATISFACTORY (Level 1)

Grade	Year	White	African Amer	Hispanic	Econ Disadv	Special Educ	LEP	At Risk	Migrant	Male	Female	All	District	Number Tested (All Students)
8	2012	6	24	179	164	7	92	152		92	117	209	4462	608
	2013	5	15	135	135	10	62	119		83	75	158	3656	557
	2014	6	22	188	174	9	120	195		114	106	220	4402	547

NUMBER TESTED IN GRADE8													
2012	44	91	458	453	13	150	293		301	307	608	9,392	
2013	51	59	428	443	20	140	260		288	269	557	8,991	
2014	28	59	439	406	14	210	360		297	250	547	9,464	

PERCENTAGE ADVANCED (Level 3)

Grade	Year	White	African Amer	Hispanic	Econ Disadv	Special Educ	LEP	At Risk	Migrant	Male	Female	All	District	Number Tested (All Students)
8	2012	29.5	7.7	7.9	7.1	0.0	0.0	1.7		12.3	7.5	9.9	7.1	608
	2013	27.5	10.2	11.0	10.2	0.0	4.3	4.6		14.9	10.0	12.6	8.8	557
	2014	17.9	3.4	5.7	6.9	0.0	2.4	2.5		7.4	5.2	6.4	7.3	547

NUMBER TESTED IN GRADE 8													
2012	44	91	458	453	13	150	293		301	307	608	9,392	
2013	51	59	428	443	20	140	260		288	269	557	8,991	
2014	28	59	439	406	14	210	360		297	250	547	9,464	

AVERAGE PERCENTAGE OF ITEMS CORRECT BY REPORTING CATEGORY

Grade	Year	REPORTING CATEGORY			
		1. History	2. Geography and Culture	3. Government and Citizenship	4. Economics, Science, Technology, and Society
8	2012	56.0	58.5	55.9	53.5
	2013	62.5	67.2	54.0	54.1
	2014	57.6	48.8	54.0	55.3

PERCENTAGE SATISFACTORY (Levels 2 or 3)

Test	Year	White	African Amer	Hispanic	Econ Disadv	Special Educ	LEP	At Risk	Migrant	Male	Female	All	District
U.S. HISTORY	2012	*								*		*	*
	2013												90.2
	2014	97.0	98.1	92.2	92.0	77.3	89.3	91.0		95.1	92.0	93.5	92.0
Tests Taken	2012	1								1		1	4
	2013												51
	2014	67	52	348	336	22	84	288		243	237	480	7,801

NUMBER UNSATISFACTORY (Level 1)

Test	Year	White	African Amer	Hispanic	Econ Disadv	Special Educ	LEP	At Risk	Migrant	Male	Female	All	District
U.S. HISTORY	2012	*								*		*	*
	2013												5
	2014	2	1	27	27	5	9	26		12	19	31	625
Tests Taken	2012	1								1		1	4
	2013												51
	2014	67	52	348	336	22	84	288		243	237	480	7,801

PERCENTAGE ADVANCED (Level 3)

Test	Year	White	African Amer	Hispanic	Econ Disadv	Special Educ	LEP	At Risk	Migrant	Male	Female	All	District
U.S. HISTORY	2012	*								*		*	*
	2013												2.0
	2014	32.8	3.8	10.1	10.1	9.1	2.4	6.6		18.1	8.0	13.1	10.3
Tests Taken	2012	1								1		1	4
	2013												51
	2014	67	52	348	336	22	84	288		243	237	480	7,801

AVERAGE PERCENTAGE OF ITEMS CORRECT BY REPORTING CATEGORY

U.S. HISTORY	1. History	2. Geography and Culture	3. Government and Citizenship	4. Economics, Science, Technology, and Society
2012	*	*	*	*
2013				
2014	56.9	67.2	63.6	68.0

PERCENTAGE SATISFACTORY (Levels 2 or 3)

Grade	Year	White	African Amer	Hispanic	Econ Disadv	Special Educ	LEP	At Risk	Migrant	Male	Female	All	District	Number Tested (All Students)
3	2012		*	67.7	67.8	16.7	67.3	67.1		63.5	72.4	67.8	65.5	407
	2013			74.0	73.8	28.6	73.5	73.5		71.1	77.1	74.0	69.6	362
	2014			72.0	72.8	57.1	71.5	71.7		66.5	78.2	72.1	65.2	373
4	2012			70.1	69.7	50.0	69.9	70.3		65.6	74.6	70.2	64.4	369
	2013		*	64.9	64.3	10.0	64.7	64.6		62.9	66.9	64.8	61.0	347
	2014			65.7	66.0	11.1	65.6	65.8		62.6	68.9	65.7	60.8	327
5	2012			82.6	81.8	*	82.0	82.0		73.2	91.0	82.3	72.1	283
	2013	*		90.9	91.3	33.3	91.0	91.1		85.3	95.9	90.9	86.5	319
	2014		*	87.8	88.5	50.0	88.0	88.4		86.4	89.4	87.9	83.0	272
3-5	2012		*	72.5	72.2	36.0	72.2	72.2		66.7	78.2	72.5	66.8	1,059
	2013	*	*	76.1	76.0	21.7	76.0	76.0		72.4	79.9	76.2	70.6	1,028
	2014		*	74.4	74.9	37.5	74.2	74.4		70.8	78.1	74.4	68.7	972

NUMBER TESTED IN GRADES 3-5													
2012		1	1,056	1,032	25	1,035	1,037		526	533	1,059	14,102	
2013	1	1	1,023	999	23	1,000	1,006		515	513	1,028	13,810	
2014		1	967	908	24	948	951		497	475	972	14,654	

NUMBER UNSATISFACTORY (Level 1)

Grade	Year	White	African Amer	Hispanic	Econ Disadv	Special Educ	LEP	At Risk	Migrant	Male	Female	All	District	Number Tested (All Students)
3	2012		*	131	129	10	128	129		76	55	131	1,957	407
	2013			94	92	5	94	94		54	40	94	1,697	362
	2014			104	95	3	103	102		65	39	104	2,005	373
4	2012			110	108	4	110	109		62	48	110	1,728	369
	2013		*	121	121	9	118	119		66	56	122	1,915	347
	2014			111	104	8	110	110		61	51	112	1,891	327
5	2012			49	50	*	50	50		37	13	50	998	283
	2013	*		29	27	4	28	28		22	7	29	449	319
	2014		*	33	29	4	32	31		19	14	33	692	272
3-5	2012		*	290	287	16	288	288		175	116	291	4,683	1,059
	2013	*	*	244	240	18	240	241		142	103	245	4,061	1,028
	2014		*	248	228	15	245	243		145	104	249	4,588	972

NUMBER TESTED IN GRADES 3-5													
2012		1	1,056	1,032	25	1,035	1,037		526	533	1,059	14,102	
2013	1	1	1,023	999	23	1,000	1,006		515	513	1,028	13,810	
2014		1	967	908	24	948	951		497	475	972	14,654	

PERCENTAGE ADVANCED (Level 3)

Grade	Year	White	African Amer	Hispanic	Econ Disadv	Special Educ	LEP	At Risk	Migrant	Male	Female	All	District	Number Tested (All Students)
3	2012		*	13.3	13.0	0.0	12.3	12.5		11.5	15.1	13.3	13.4	407
	2013			16.9	16.8	0.0	16.3	16.3		16.0	17.7	16.9	17.4	362
	2014			19.4	19.2	0.0	18.5	18.6		16.0	22.9	19.3	17.6	373
4	2012			13.9	14.6	12.5	13.9	14.2		12.8	15.3	14.1	13.0	369
	2013		*	13.9	14.2	10.0	13.5	13.4		10.7	17.2	13.8	13.4	347
	2014			15.4	15.0	0.0	15.9	15.8		14.1	17.1	15.6	12.5	327
5	2012			20.6	19.3	*	20.1	20.1		16.7	24.1	20.5	12.1	283
	2013	*		13.9	13.6	0.0	13.5	13.7		12.0	15.4	13.8	11.6	319
	2014		*	18.1	17.4	0.0	18.0	18.3		16.4	19.7	18.0	15.8	272
3-5	2012		*	15.4	15.2	4.0	15.0	15.1		13.3	17.6	15.5	12.9	1,059
	2013	*	*	15.0	14.9	4.3	14.5	14.5		13.0	16.8	14.9	14.6	1,028
	2014		*	17.7	17.3	0.0	17.5	17.6		15.5	20.0	17.7	15.4	972

NUMBER TESTED IN GRADE 3-5													
2012		1	1,056	1,032	25	1,035	1,037		526	533	1,059	14,102	
2013	1	1	1,023	999	23	1,000	1,006		515	513	1,028	13,810	
2014		1	967	908	24	948	951		497	475	972	14,654	

AVERAGE PERCENTAGE OF ITEMS CORRECT BY REPORTING CATEGORY

Grade	Year	REPORTING CATEGORY		
		1. Understanding Across Genres	2. Understanding/Analysis of Literary Texts	3. Understanding/Analysis of Informational Texts
3	2012	67.5	59.4	51.3
	2013	60.7	62.5	61.6
	2014	69.2	60.8	61.8
4	2012	56.6	65.0	60.8
	2013	60.4	63.2	56.4
	2014	65.3	60.4	62.9
5	2012	64.2	69.6	65.8
	2013	64.9	63.6	71.8
	2014	62.6	69.2	69.9
3-5	2012	62.8	64.1	58.5
	2013	61.9	63.1	63.0
	2014	66.0	63.0	64.4

PERCENTAGE SATISFACTORY (Levels 2 or 3)

Grade	Year	White	African Amer	Hispanic	Econ Disadv	Special Educ	LEP	At Risk	Migrant	Male	Female	All	District	Number Tested (All Students)
4	2012			70.3	70.4	37.5	69.8	70.0		60.6	79.0	70.1	68.9	361
	2013		*	61.6	61.7	14.3	61.0	60.9		51.6	72.4	61.6	62.2	354
	2014			63.7	65.1	22.2	63.6	63.7		58.4	69.5	63.9	65.6	330

NUMBER TESTED IN GRADE 4													
2012			360	348	8	358	360		175	186	361	4,905	
2013		1	352	345	14	341	343		184	170	354	4,958	
2014			328	307	9	324	325		166	164	330	4,841	

NUMBER UNSATISFACTORY (Level 1)

Grade	Year	White	African Amer	Hispanic	Econ Disadv	Special Educ	LEP	At Risk	Migrant	Male	Female	All	District	Number Tested (All Students)
4	2012			107	103	5	108	108		69	39	108	1,524	361
	2013		*	135	132	12	133	134		89	47	136	1,876	354
	2014			119	107	7	118	118		69	50	119	1,667	330

NUMBER TESTED IN GRADE 4														
2012			360	348	8	358	360		175	186	361	4,905		
2013		1	352	345	14	341	343		184	170	354	4,958		
2014			328	307	9	324	325		166	164	330	4,841		

PERCENTAGE ADVANCED (Level 3)

Grade	Year	White	African Amer	Hispanic	Econ Disadv	Special Educ	LEP	At Risk	Migrant	Male	Female	All	District	Number Tested (All Students)
4	2012			5.3	5.5	12.5	5.3	5.3		1.7	8.6	5.3	5.3	361
	2013		*	1.1	1.2	0.0	0.9	0.9		1.6	0.6	1.1	3.6	354
	2014			8.5	8.5	0.0	8.0	8.0		7.8	9.8	8.8	5.9	330

NUMBER TESTED IN GRADE 4														
2012			360	348	8	358	360		175	186	361	4,905		
2013		1	352	345	14	341	343		184	170	354	4,958		
2014			328	307	9	324	325		166	164	330	4,841		

AVERAGE PERCENTAGE OF ITEMS CORRECT BY REPORTING CATEGORY

Grade	Year	REPORTING CATEGORY			
		1. Composition ¹ Personal Narrative	1. Composition ¹ Expository	2. Revision	3. Editing
4	2012	2.0	2.0	60.6	64.7
	2013	4.4	4.0	58.6	64.6
	2014	4.4	4.1	66.7	67.3

¹Average score points (range 0-8). A STAAR composition is rated twice on a scale of 1 to 4, and the ratings are summed to determine score points for the composition. Score point scale: 0=Non-scorable; 2=Very Limited; 3=between Very Limited and Basic; 4=Basic; 5=between Basic and Satisfactory; 6=Satisfactory; 7=between Satisfactory and Accomplished; 8=Accomplished

PERCENTAGE SATISFACTORY (Levels 2 or 3)

Grade	Year	White	African Amer	Hispanic	Econ Disadv	Special Educ	LEP	At Risk	Migrant	Male	Female	All	District	Number Tested (All Students)
3	2012			41.7	41.7		33.3	40.0		40.0	*	41.7	36.6	12
	2013			*	*		*	*		*	*	*	20.5	3
	2014			*	*		*	*		*	*	*	23.0	5
4	2012			*	*		*	*		*		*	28.4	2
	2013			*	*		*	*		*	*	*	27.3	3
	2014			21.4	25.0		21.4	21.4		37.5	0.0	20.0	22.8	15
5	2012			*	*		*	*		*		*	24.1	2
	2013			*	*	*	*	*		*		*	41.5	3
	2014			*	*		*	*		*	*	*	38.8	4
3-5	2012			40.0	37.5		30.8	35.7		35.7	*	37.5	31.7	16
	2013			55.6	62.5	*	62.5	62.5		66.7	*	55.6	30.9	9
	2014			30.4	33.3		30.4	30.4		46.2	9.1	29.2	29.2	24

NUMBER TESTED IN GRADES 3-5													
2012			15	16		13	14		14	2	16	259	
2013			9	8	1	8	8		6	3	9	233	
2014			23	21		23	23		13	11	24	295	

NUMBER UNSATISFACTORY (Level 1)

Grade	Year	White	African Amer	Hispanic	Econ Disadv	Special Educ	LEP	At Risk	Migrant	Male	Female	All	District	Number Tested (All Students)
3	2012			7	7		6	6		6	*	7	83	12
	2013			*	*		*	*		*	*	*	58	3
	2014			*	*		*	*		*	*	*	77	5
4	2012			*	*		*	*		*		*	53	2
	2013			*	*		*	*		*	*	*	48	3
	2014			11	9		11	11		5	7	12	61	15
5	2012			*	*		*	*		*		*	41	2
	2013			*	*	*	*	*		*		*	55	3
	2014			*	*		*	*		*	*	*	71	4
3-5	2012			9	10		9	9		9	*	10	177	16
	2013			4	3	*	3	3		2	*	4	161	9
	2014			16	14		16	16		7	10	17	209	24

NUMBER TESTED IN GRADES 3-5													
2012			15	16		13	14		14	2	16	259	
2013			9	8	1	8	8		6	3	9	233	
2014			23	21		23	23		13	11	24	295	

PERCENTAGE ADVANCED (Level 3)

Grade	Year	White	African Amer	Hispanic	Econ Disadv	Special Educ	LEP	At Risk	Migrant	Male	Female	All	District	Number Tested (All Students)
3	2012			0.0	0.0		0.0	0.0		0.0	*	0.0	0.8	12
	2013			*	*		*	*		*	*	*	1.4	3
	2014			*	*		*	*		*	*	*	0.0	5
4	2012			*	*		*	*		*		*	2.7	2
	2013			*	*		*	*		*	*	*	3.0	3
	2014			0.0	0.0		0.0	0.0		0.0	0.0	0.0	1.3	15
5	2012			*	*		*	*		*		*	1.9	2
	2013			*	*	*	*	*		*		*	1.1	3
	2014			*	*		*	*		*	*	*	0.9	4
3-5	2012			0.0	0.0		0.0	0.0		0.0	*	0.0	1.5	16
	2013			0.0	0.0	*	0.0	0.0		0.0	*	0.0	1.7	9
	2014			0.0	0.0		0.0	0.0		0.0	0.0	0.0	0.7	24

NUMBER TESTED IN GRADE 3-5													
2012			15	16		13	14		14	2	16	259	
2013			9	8	1	8	8		6	3	9	233	
2014			23	21		23	23		13	11	24	295	

AVERAGE PERCENTAGE OF ITEMS CORRECT BY REPORTING CATEGORY

Grade	Year	REPORTING CATEGORY				
		1. Numbers, Operations, and Quantitative Reasoning	2. Patterns, Relationships, and Algebraic Reasoning	3. Geometry and Spatial Reasoning	4. Measurement	5. Probability and Statistics
3	2012	42.8	58.3	68.5	50.0	31.9
	2013	*	*	*	*	*
	2014	*	*	*	*	*
4	2012	*	*	*	*	*
	2013	*	*	*	*	*
	2014	42.4	54.4	51.7	36.7	41.3
5	2012	*	*	*	*	*
	2013	*	*	*	*	*
	2014	*	*	*	*	*
3-5	2012	38.6	55.2	63.4	46.1	31.8
	2013	52.5	65.3	66.4	63.9	46.9
	2014	43.2	50.9	48.0	37.0	47.0

PERCENTAGE SATISFACTORY (Levels 2 or 3)

Grade	Year	White	African Amer	Hispanic	Econ Disadv	Special Educ	LEP	At Risk	Migrant	Male	Female	All	District	Number Tested (All Students)
5	2012			62.5	62.5		59.4	59.4		58.8	62.5	60.6	45.4	33
	2013			52.3	54.2	*	52.4	51.8		57.8	46.3	52.3	43.0	86
	2014			64.9	67.2	*	64.4	66.7		65.0	64.7	64.9	55.6	74

NUMBER TESTED IN GRADE 5													
2012			32	32		32	32		17	16	33	1,164	
2013			86	83	3	84	83		45	41	86	1,122	
2014			74	67	1	73	72		40	34	74	2,304	

NUMBER UNSATISFACTORY (Level 1)

Grade	Year	White	African Amer	Hispanic	Econ Disadv	Special Educ	LEP	At Risk	Migrant	Male	Female	All	District	Number Tested (All Students)
5	2012			12	12		13	13		7	6	13	636	33
	2013			41	38	*	40	40		19	22	41	640	86
	2014			26	22	*	26	24		14	12	26	1022	74

NUMBER TESTED IN GRADE 5													
2012			32	32		32	32		17	16	33	1,164	
2013			86	83	3	84	83		45	41	86	1,122	
2014			74	67	1	73	72		40	34	74	2,304	

PERCENTAGE ADVANCED (Level 3)

Grade	Year	White	African Amer	Hispanic	Econ Disadv	Special Educ	LEP	At Risk	Migrant	Male	Female	All	District	Number Tested (All Students)
5	2012			0.0	0.0		0.0	0.0		0.0	0.0	0.0	2.2	33
	2013			2.3	2.4	*	2.4	2.4		2.2	2.4	2.3	1.9	86
	2014			2.7	3.0	*	2.7	2.8		2.5	2.9	2.7	2.9	74

NUMBER TESTED IN GRADE 5													
2012			32	32		32	32		17	16	33	1,164	
2013			86	83	3	84	83		45	41	86	1,122	
2014			74	67	1	73	72		40	34	74	2,304	

AVERAGE PERCENTAGE OF ITEMS CORRECT BY REPORTING CATEGORY

Grade	Year	REPORTING CATEGORY			
		1. Matter and Energy	2. Force, Motion, and Energy	3. Earth and Space	4. Organisms and Environments
5	2012	81.4	72.1	64.6	64.3
	2013	57.1	65.9	53.6	61.0
	2014	63.0	66.1	61.6	65.2

PERCENTAGE SATISFACTORY (Levels 2 or 3)

Grade	Year	White	African Amer	Hispanic	Econ Disadv	Special Educ	LEP	At Risk	Migrant	Male	Female	All	District	Number Tested (All Students)
3	2012			*	*		*	*		*	*	*	51.7	4
	2013		*	*	16.7		16.7	16.7		*	*	16.7	32.5	6
	2014			47.5	48.6	*	47.5	48.7		50.0	42.9	47.5	35.8	40
4	2012			22.2	22.2		22.2	22.2		*	33.3	22.2	23.7	9
	2013			*	*		*	*		*	*	*	32.7	5
	2014			*	*		*	*			*	*	25.4	2
5	2012			*	*		*	*		*	*	*	0.0	4
	2013	*		*	*		*	*		*	*	*	23.3	5
	2014			16.7	*		14.3	*		*	*	14.3	39.7	7
3-5	2012			17.6	17.6		17.6	17.6		14.3	20.0	17.6	39.6	17
	2013	*	*	0.0	6.3		6.3	6.7		12.5	0.0	6.3	31.0	16
	2014			42.6	43.2	*	40.8	44.4		44.8	35.0	40.8	34.8	49

NUMBER TESTED IN GRADES 3-5													
2012			17	17		17	17		7	10	17	682	
2013	1	1	13	16		16	15		8	8	16	523	
2014			47	44	3	49	45		29	20	49	454	

PERCENTAGE SATISFACTORY (Levels 2 or 3)

Grade	Year	White	African Amer	Hispanic	Econ Disadv	Special Educ	LEP	At Risk	Migrant	Male	Female	All	District	Number Tested (All Students)
6	2012	*		35.3	35.3		36.8	50.0		44.4	30.0	36.8	22.8	19
	2013	*		46.2	50.0		42.9	42.9		50.0	33.3	42.9	30.6	14
	2014			16.7	*	*	16.7	16.7		*	*	16.7	29.0	6
7	2012			14.3	15.4		13.3	14.3		11.1	16.7	13.3	16.9	15
	2013			31.6	40.0		35.0	33.3		45.5	22.2	35.0	24.3	20
	2014	*		12.5	22.2		22.2	22.2		16.7	*	22.2	24.8	9
8	2012			0.0	0.0		0.0	0.0		*	*	0.0	0.0	9
	2013			6.3	7.7		6.3	0.0		10.0	0.0	6.3	25.5	16
	2014			0.0	0.0		0.0	0.0		0.0	0.0	0.0	33.2	18
6-8	2012	*		20.5	20.5		20.9	25.9		22.7	19.0	20.9	12.7	43
	2013	*		27.1	32.5		28.0	26.1		34.5	19.0	28.0	26.8	50
	2014	*		6.3	8.0	*	9.1	9.1		10.0	7.7	9.1	29.1	33

NUMBER TESTED IN GRADES 6-8													
2012	1		39	39		43	27		22	21	43	620	
2013	1		48	40		50	46		29	21	50	634	
2014	1		32	25	1	33	33		20	13	33	722	

NUMBER UNSATISFACTORY (Level 1)

Grade	Year	White	African Amer	Hispanic	Econ Disadv	Special Educ	LEP	At Risk	Migrant	Male	Female	All	District	Number Tested (All Students)
3	2012			*	*		*	*		*	*	*	221	4
	2013		*	*	5		5	5		*	*	5	224	6
	2014			21	19	*	21	20		13	8	21	199	40
4	2012			7	7		7	7		*	4	7	106	9
	2013			*	*		*	*		*	*	*	68	5
	2014			*	*		*	*			*	*	53	2
5	2012			*	*		*	*		*	*	*	85	4
	2013	*		*	*		*	*		*	*	*	69	5
	2014			5	*		6	*		*	*	6	44	7
3-5	2012			14	14		14	14		6	8	14	412	17
	2013	*	*	13	15		15	14		7	8	15	361	16
	2014			27	25	*	29	25		16	13	29	296	49

NUMBER TESTED IN GRADES 3-5													
2012			17	17		17	17		7	10	17	682	
2013	1	1	13	16		16	15		8	8	16	523	
2014			47	44	3	49	45		29	20	49	454	

NUMBER UNSATISFACTORY (Level 1)

Grade	Year	White	African Amer	Hispanic	Econ Disadv	Special Educ	LEP	At Risk	Migrant	Male	Female	All	District	Number Tested (All Students)
6	2012	*		11	11		12	6		5	7	12	146	19
	2013	*		7	6		8	8		4	4	8	150	14
	2014			5	*	*	5	5		*	*	5	171	6
7	2012			12	11		13	6		8	5	13	177	15
	2013			13	9		13	12		6	7	13	162	20
	2014	*		7	7		7	7		5	*	7	176	9
8	2012			8	9		9	8		*	*	9	218	9
	2013			15	12		15	14		9	6	15	152	16
	2014			18	11		18	18		11	7	18	165	18
6-8	2012	*		31	31		34	20		17	17	34	541	43
	2013	*		35	27		36	34		19	17	36	464	50
	2014	*		30	23	*	30	30		18	12	30	512	33

NUMBER TESTED IN GRADES 6-8													
2012	1		39	39		43	27		22	21	43	620	
2013	1		48	40		50	46		29	21	50	634	
2014	1		32	25	1	33	33		20	13	33	722	

PERCENTAGE ADVANCED (Level 3)

Grade	Year	White	African Amer	Hispanic	Econ Disadv	Special Educ	LEP	At Risk	Migrant	Male	Female	All	District	Number Tested (All Students)
3	2012			*	*		*	*		*	*	*	4.6	4
	2013		*	*	0.0		0.0	0.0		*	*	0.0	1.5	6
	2014			7.5	8.1	*	7.5	7.7		11.5	0.0	7.5	2.3	40
4	2012			0.0	0.0		0.0	0.0		*	0.0	0.0	1.4	9
	2013			*	*		*	*		*	*	*	2.0	5
	2014			*	*		*	*			*	*	0.0	2
5	2012			*	*		*	*		*	*	*	0.0	4
	2013	*		*	*		*	*		*	*	*	0.0	5
	2014			0.0	*		0.0	*		*	*	0.0	0.0	7
3-5	2012			0.0	0.0		0.0	0.0		0.0	0.0	0.0	3.4	17
	2013	*	*	0.0	0.0		0.0	0.0		0.0	0.0	0.0	1.3	16
	2014			6.4	6.8	*	6.1	6.7		10.3	0.0	6.1	1.5	49

NUMBER TESTED IN GRADE 3-5													
2012			17	17		17	17		7	10	17	682	
2013	1	1	13	16		16	15		8	8	16	523	
2014			47	44	3	49	45		29	20	49	454	

PERCENTAGE ADVANCED (Level 3)

Grade	Year	White	African Amer	Hispanic	Econ Disadv	Special Educ	LEP	At Risk	Migrant	Male	Female	All	District	Number Tested (All Students)
6	2012	*		0.0	0.0		0.0	0.0		0.0	0.0	0.0	1.1	19
	2013	*		0.0	0.0		0.0	0.0		0.0	0.0	0.0	2.3	14
	2014			0.0	*	*	0.0	0.0		*	*	0.0	3.3	6
7	2012			0.0	0.0		0.0	0.0		0.0	0.0	0.0	0.0	15
	2013			0.0	0.0		0.0	0.0		0.0	0.0	0.0	0.9	20
	2014	*		0.0	0.0		0.0	0.0		0.0	*	0.0	0.0	9
8	2012			0.0	0.0		0.0	0.0		*	*	0.0	0.0	9
	2013			0.0	0.0		0.0	0.0		0.0	0.0	0.0	0.0	16
	2014			0.0	0.0		0.0	0.0		0.0	0.0	0.0	0.4	18
6-8	2012	*		0.0	0.0		0.0	0.0		0.0	0.0	0.0	0.3	43
	2013	*		0.0	0.0		0.0	0.0		0.0	0.0	0.0	1.1	50
	2014	*		0.0	0.0	*	0.0	0.0		0.0	0.0	0.0	1.2	33

NUMBER TESTED IN GRADE 6-8													
2012	1		39	39		43	27		22	21	43	620	
2013	1		48	40		50	46		29	21	50	634	
2014	1		32	25	1	33	33		20	13	33	722	

AVERAGE PERCENTAGE OF ITEMS CORRECT BY REPORTING CATEGORY

Grade	Year	REPORTING CATEGORY				
		1. Numbers, Operations, and Quantitative Reasoning	2. Patterns, Relationships, and Algebraic Reasoning	3. Geometry and Spatial Reasoning	4. Measurement	5. Probability and Statistics
3	2012	*	*	*	*	*
	2013	43.3	39.6	63.0	43.8	33.3
	2014	56.8	50.9	68.9	55.9	47.1
4	2012	52.3	50.0	53.7	43.1	48.9
	2013	*	*	*	*	*
	2014	*	*	*	*	*
5	2012	*	*	*	*	*
	2013	*	*	*	*	*
	2014	38.1	31.0	26.5	35.7	36.4
3-5	2012	40.9	44.9	45.4	36.8	38.1
	2013	41.6	38.8	46.2	30.5	31.5
	2014	54.0	48.0	61.2	52.3	45.3

AVERAGE PERCENTAGE OF ITEMS CORRECT BY REPORTING CATEGORY

Grade	Year	REPORTING CATEGORY				
		1. Numbers, Operations, and Quantitative Reasoning	2. Patterns, Relationships, and Algebraic Reasoning	3. Geometry and Spatial Reasoning	4. Measurement	5. Probability and Statistics
6	2012	41.1	42.5	38.2	40.8	34.2
	2013	37.9	44.0	33.0	41.1	38.4
	2014	34.4	45.8	33.3	31.3	22.9
7	2012	35.4	30.8	40.0	30.0	33.3
	2013	28.5	38.1	38.5	32.5	29.5
	2014	26.5	33.3	32.2	25.0	26.7
8	2012	41.4	43.7	50.0	47.9	51.1
	2013	30.1	28.6	16.4	28.4	21.3
	2014	23.7	28.2	21.5	24.4	29.4
6-8	2012	39.2	38.7	41.3	38.5	37.4
	2013	31.6	36.7	29.9	33.6	29.4
	2014	26.4	32.8	26.6	25.8	27.5

PERCENTAGE SATISFACTORY (Levels 2 and 3)

Test	Year	White	African Amer	Hispanic	Econ Disadv	Special Educ	LEP	At Risk	Migrant	Male	Female	All	District
ALGEBRA I	2012	*		25.0	25.0		22.2	14.3		20.0	25.0	22.2	42.9
	2013			62.5	69.2		62.5	60.0		85.7	44.4	62.5	51.2
	2014	*		85.3	87.5		86.8	86.5		82.4	90.5	86.8	42.9
Tests Taken	2012	1		16	16		18	14		10	8	18	282
	2013			16	13		16	15		7	9	16	320
	2014	2		34	32		38	37		17	21	38	471

NUMBER UNSATISFACTORY (Level 1)

Test	Year	White	African Amer	Hispanic	Econ Disadv	Special Educ	LEP	At Risk	Migrant	Male	Female	All	District
ALGEBRA I	2012	*		12	12		14	12		8	6	14	161
	2013			6	4		6	6		1	5	6	156
	2014	*		5	4		5	5		3	2	5	269
Tests Taken	2012	1		16	16		18	14		10	8	18	282
	2013			16	13		16	15		7	9	16	320
	2014	2		34	32		38	37		17	21	38	471

PERCENTAGE ADVANCED (Level 3)

Test	Year	White	African Amer	Hispanic	Econ Disadv	Special Educ	LEP	At Risk	Migrant	Male	Female	All	District
ALGEBRA I	2012	*		0.0	0.0		0.0	0.0		0.0	0.0	0.0	2.5
	2013			0.0	0.0		0.0	0.0		0.0	0.0	0.0	4.1
	2014	*		8.8	6.3		7.9	8.1		5.9	9.5	7.9	2.3
Tests Taken	2012	1		16	16		18	14		10	8	18	282
	2013			16	13		16	15		7	9	16	320
	2014	2		34	32		38	37		17	21	38	471

AVERAGE PERCENTAGE OF ITEMS CORRECT BY REPORTING CATEGORY

ALGEBRA I	1. Functional Relationships	2. Properties and Attributes of Functions	3. Linear Functions	4. Linear Equations and Inequalities	5. Quadratic and Other Nonlinear Functions
2012	36.8	30.6	32.6	21.7	28.4
2013	51.6	42.2	36.3	26.9	49.3
2014	61.8	59.4	52.6	36.6	52.3

PERCENTAGE SATISFACTORY (Levels 2 or 3)

Grade	Year	White	African Amer	Hispanic	Econ Disadv	Special Educ	LEP	At Risk	Migrant	Male	Female	All	District	Number Tested (All Students)
5	2012			*	*		*	*		*	*	*	17.0	4
	2013	*		*	*		*	*		*	*	*	20.3	4
	2014			12.5	14.3		12.5	14.3		*	16.7	12.5	16.1	8

NUMBER TESTED IN GRADE 5													
2012			3	4		4	3		2	2	4	88	
2013	2		2	4		4	4		2	2	4	74	
2014			8	7		8	7		2	6	8	56	

PERCENTAGE SATISFACTORY (Levels 2 or 3)

Grade	Year	White	African Amer	Hispanic	Econ Disadv	Special Educ	LEP	At Risk	Migrant	Male	Female	All	District	Number Tested (All Students)
8	2012			30.8	30.8		28.6	36.4		28.6	28.6	28.6	14.2	14
	2013			0.0	0.0		0.0	0.0		0.0	0.0	0.0	13.3	16
	2014			17.6	20.0		17.6	17.6		20.0	14.3	17.6	17.0	17

NUMBER TESTED IN GRADE 8													
2012			13	13		14	11		7	7	14	226	
2013			16	13		16	14		10	6	16	210	
2014			17	10		17	17		10	7	17	277	

NUMBER UNSATISFACTORY (Level 1)

Grade	Year	White	African Amer	Hispanic	Econ Disadv	Special Educ	LEP	At Risk	Migrant	Male	Female	All	District	Number Tested (All Students)
5	2012			*	*		*	*		*	*	*	73	4
	2013	*		*	*		*	*		*	*	*	59	4
	2014			7	6		7	6		*	5	7	47	8

NUMBER TESTED IN GRADE 5													
2012			3	4		4	3		2	2	4	88	
2013	2		2	4		4	4		2	2	4	74	
2014			8	7		8	7		2	6	8	56	

NUMBER UNSATISFACTORY (Level 1)

Grade	Year	White	African Amer	Hispanic	Econ Disadv	Special Educ	LEP	At Risk	Migrant	Male	Female	All	District	Number Tested (All Students)
8	2012			9	9		10	7		5	5	10	194	14
	2013			16	13		16	14		10	6	16	182	16
	2014			14	8		14	14		8	6	14	230	17

NUMBER TESTED IN GRADE 8													
2012			13	13		14	11		7	7	14	226	
2013			16	13		16	14		10	6	16	210	
2014			17	10		17	17		10	7	17	277	

PERCENTAGE ADVANCED (Level 3)

Grade	Year	White	African Amer	Hispanic	Econ Disadv	Special Educ	LEP	At Risk	Migrant	Male	Female	All	District	Number Tested (All Students)
5	2012			*	*		*	*		*	*	*	1.1	4
	2013	*		*	*		*	*		*	*	*	0.0	4
	2014			0.0	0.0		0.0	0.0		*	0.0	0.0	0.0	8

NUMBER TESTED IN GRADE 5													
2012			3	4		4	3		2	2	4	88	
2013	2		2	4		4	4		2	2	4	74	
2014			8	7		8	7		2	6	8	56	

PERCENTAGE ADVANCED (Level 3)

Grade	Year	White	African Amer	Hispanic	Econ Disadv	Special Educ	LEP	At Risk	Migrant	Male	Female	All	District	Number Tested (All Students)
8	2012			0.0	0.0		0.0	0.0		0.0	0.0	0.0	0.0	14
	2013			0.0	0.0		0.0	0.0		0.0	0.0	0.0	0.0	16
	2014			0.0	0.0		0.0	0.0		0.0	0.0	0.0	0.0	17

NUMBER TESTED IN GRADE 8													
2012			13	13		14	11		7	7	14	226	
2013			16	13		16	14		10	6	16	210	
2014			17	10		17	17		10	7	17	277	

AVERAGE PERCENTAGE OF ITEMS CORRECT BY REPORTING CATEGORY

Grade	Year	REPORTING CATEGORY			
		1. Matter and Energy	2. Force, Motion, and Energy	3. Earth and Space	4. Organisms and Environments
5	2012	*	*	*	*
	2013	*	*	*	*
	2014	40.6	35.0	36.5	33.0
8	2012	42.9	42.3	55.6	48.0
	2013	42.9	35.4	32.1	37.1
	2014	30.3	33.3	41.2	39.9

PERCENTAGE SATISFACTORY (Levels 2 and 3)

Test	Year	White	African Amer	Hispanic	Econ Disadv	Special Educ	LEP	At Risk	Migrant	Male	Female	All	District
BIOLOGY	2012	*		26.7	26.7		23.5	23.1		10.0	42.9	23.5	25.5
	2013			52.9	50.0		52.9	50.0		42.9	60.0	52.9	49.0
	2014	*		64.0	62.5		64.3	64.3		53.3	76.9	64.3	42.6
Tests Taken	2012	1		15	15		17	13		10	7	17	200
	2013			17	14		17	16		7	10	17	259
	2014	1		25	24		28	28		15	13	28	404

NUMBER UNSATISFACTORY (Level 1)

Test	Year	White	African Amer	Hispanic	Econ Disadv	Special Educ	LEP	At Risk	Migrant	Male	Female	All	District
BIOLOGY	2012	*		11	11		13	10		9	4	13	149
	2013			8	7		8	8		4	4	8	132
	2014	*		9	9		10	10		7	3	10	232
Tests Taken	2012	1		15	15		17	13		10	7	17	200
	2013			17	14		17	16		7	10	17	259
	2014	1		25	24		28	28		15	13	28	404

PERCENTAGE ADVANCED (Level 3)

Test	Year	White	African Amer	Hispanic	Econ Disadv	Special Educ	LEP	At Risk	Migrant	Male	Female	All	District
BIOLOGY	2012	*		0.0	0.0		0.0	0.0		0.0	0.0	0.0	0.0
	2013			0.0	0.0		0.0	0.0		0.0	0.0	0.0	0.0
	2014	*		0.0	0.0		0.0	0.0		0.0	0.0	0.0	0.2
Tests Taken	2012	1		15	15		17	13		10	7	17	200
	2013			17	14		17	16		7	10	17	259
	2014	1		25	24		28	28		15	13	28	404

AVERAGE PERCENTAGE OF ITEMS CORRECT BY REPORTING CATEGORY

BIOLOGY	1. Cell Structure and Function	2. Mechanisms of Genetics	3. Biological Evolution and Classification	4. Biological Processes and Systems	5. Interdependence within Environmental Systems
2012	33.2	24.6	40.0	23.0	29.9
2013	34.2	34.2	42.4	36.9	38.5
2014	40.6	43.8	40.7	39.3	45.5

PERCENTAGE SATISFACTORY (Levels 2 or 3)

Grade	Year	White	African Amer	Hispanic	Econ Disadv	Special Educ	LEP	At Risk	Migrant	Male	Female	All	District	Number Tested (All Students)
8	2012			30.8	30.8		28.6	36.4		42.9	14.3	28.6	11.1	14
	2013			18.8	15.4		18.8	21.4		10.0	33.3	18.8	18.6	16
	2014			11.8	10.0		11.8	11.8		20.0	0.0	11.8	11.0	17

NUMBER TESTED IN GRADE 8													
2012			13	13		14	11		7	7	14	226	
2013			16	13		16	14		10	6	16	204	
2014			17	10		17	17		10	7	17	272	

NUMBER UNSATISFACTORY (Level 1)

Grade	Year	White	African Amer	Hispanic	Econ Disadv	Special Educ	LEP	At Risk	Migrant	Male	Female	All	District	Number Tested (All Students)
8	2012			9	9		10	7		4	6	10	201	14
	2013			13	11		13	11		9	4	13	166	16
	2014			15	9		15	15		8	7	15	242	17

NUMBER TESTED IN GRADE8													
2012			13	13		14	11		7	7	14	226	
2013			16	13		16	14		10	6	16	204	
2014			17	10		17	17		10	7	17	272	

PERCENTAGE ADVANCED (Level 3)

Grade	Year	White	African Amer	Hispanic	Econ Disadv	Special Educ	LEP	At Risk	Migrant	Male	Female	All	District	Number Tested (All Students)
8	2012			0.0	0.0		0.0	0.0		0.0	0.0	0.0	0.0	14
	2013			0.0	0.0		0.0	0.0		0.0	0.0	0.0	1.0	16
	2014			0.0	0.0		0.0	0.0		0.0	0.0	0.0	0.4	17

NUMBER TESTED IN GRADE 8													
2012			13	13		14	11		7	7	14	226	
2013			16	13		16	14		10	6	16	204	
2014			17	10		17	17		10	7	17	272	

AVERAGE PERCENTAGE OF ITEMS CORRECT BY REPORTING CATEGORY

Grade	Year	REPORTING CATEGORY			
		1. History	2. Geography and Culture	3. Government and Citizenship	4. Economics, Science, Technology, and Society
8	2012	37.9	53.0	36.9	38.4
	2013	34.7	37.5	39.6	32.8
	2014	26.8	28.9	27.0	24.3

PERCENTAGE SATISFACTORY (Levels 2 or 3)

Grade	Year	White	African Amer	Hispanic	Econ Disadv	Special Educ	LEP	At Risk	Migrant	Male	Female	All	District	Number Tested (All Students)
3	2012	*	*	40.0	41.2	38.9	55.6	35.3		41.7	33.3	38.9	54.7	18
	2013		66.7	69.2	68.4	70.0	*	68.4		66.7	72.7	70.0	67.5	20
	2014	*	*	66.7	77.8	77.3	66.7	76.5		75.0	80.0	77.3	63.3	22
4	2012	*	*	45.0	54.2	57.7	38.5	45.0		55.6	62.5	57.7	58.0	26
	2013	*	*	70.6	72.7	72.0	72.7	70.6		61.5	83.3	72.0	60.2	25
	2014	*	66.7	60.0	66.7	66.7	42.9	64.3		71.4	60.0	66.7	62.9	24
5	2012	*	*	68.8	66.7	69.6	*	66.7		61.5	80.0	69.6	67.0	23
	2013	*	*	60.9	65.2	69.0	50.0	63.6		70.0	66.7	69.0	86.5	29
	2014	83.3	100.0	100.0	95.7	96.9	93.8	96.0		94.7	100.0	96.9	86.3	32
3-5	2012	*	63.6	51.0	54.8	56.7	50.0	49.1		53.5	62.5	56.7	61.0	67
	2013	*	80.0	66.0	68.8	70.3	60.0	67.2		66.7	75.0	70.3	73.4	74
	2014	88.9	85.7	78.0	80.6	82.1	75.0	82.1		82.2	81.8	82.1	73.2	78

NUMBER TESTED IN GRADES 3-5													
2012	5	11	51	62	67	26	55		43	24	67	1,384	
2013	5	15	53	64	74	30	58		42	32	74	1,434	
2014	9	14	50	62	78	32	56		45	33	78	1,362	

PERCENTAGE SATISFACTORY (Levels 2 or 3)

Grade	Year	White	African Amer	Hispanic	Econ Disadv	Special Educ	LEP	At Risk	Migrant	Male	Female	All	District	Number Tested (All Students)
6	2012		*	57.1	60.0	60.0	50.0	61.5		54.5	*	60.0	65.5	15
	2013	*	*	52.9	50.0	47.8	22.2	38.9		52.9	33.3	47.8	55.9	23
	2014	*	*	37.5	55.0	47.8	46.2	45.5		47.4	*	47.8	51.6	23
7	2012	*	*	52.4	61.5	60.0	45.5	56.5		54.5	75.0	60.0	57.3	30
	2013	*	*	37.5	27.3	27.3	42.9	30.0		25.0	*	27.3	61.0	11
	2014	*	*	25.0	33.3	31.3	12.5	23.1		16.7	*	31.3	55.4	16
8	2012		*	61.5	53.8	58.8	60.0	53.3		66.7	*	58.8	58.0	17
	2013	*	100.0	83.3	96.7	86.1	80.0	82.8		85.2	88.9	86.1	74.5	36
	2014	*	*	100.0	100.0	100.0	100.0	100.0		100.0	*	100.0	75.0	13
6-8	2012	*	75.0	56.3	59.3	59.7	51.6	56.9		57.8	64.7	59.7	60.3	62
	2013	42.9	66.7	65.3	68.9	64.3	54.8	59.6		65.4	61.1	64.3	63.6	70
	2014	*	80.0	48.6	58.7	55.8	50.0	53.2		48.7	76.9	55.8	60.0	52

NUMBER TESTED IN GRADES 6-8													
2012	3	8	48	54	62	31	51			45	17	62	1,571
2013	7	12	49	61	70	31	57			52	18	70	1,687
2014	4	10	37	46	52	28	47			39	13	52	1,689

NUMBER UNSATISFACTORY (Level 1)

Grade	Year	White	African Amer	Hispanic	Econ Disadv	Special Educ	LEP	At Risk	Migrant	Male	Female	All	District	Number Tested (All Students)
3	2012	*	*	9	10	11	4	11		7	4	11	149	18
	2013		2	4	6	6	*	6		3	3	6	114	20
	2014	*	*	5	4	5	3	4		3	2	5	114	22
4	2012	*	*	11	11	11	8	11		8	3	11	201	26
	2013	*	*	5	6	7	3	5		5	2	7	184	25
	2014	*	2	6	7	8	4	5		4	4	8	170	24
5	2012	*	*	5	7	7	*	6		5	2	7	190	23
	2013	*	*	9	8	9	7	8		6	3	9	84	29
	2014	1	0	0	1	1	1	1		1	0	1	81	32
3-5	2012	*	4	25	28	29	13	28		20	9	29	540	67
	2013	*	3	18	20	22	12	19		14	8	22	382	74
	2014	1	2	11	12	14	8	10		8	6	14	365	78

NUMBER TESTED IN GRADES 3-5													
2012	5	11	51	62	67	26	55		43	24	67	1,384	
2013	5	15	53	64	74	30	58		42	32	74	1,434	
2014	9	14	50	62	78	32	56		45	33	78	1,362	

NUMBER UNSATISFACTORY (Level 1)

Grade	Year	White	African Amer	Hispanic	Econ Disadv	Special Educ	LEP	At Risk	Migrant	Male	Female	All	District	Number Tested (All Students)
6	2012		*	6	6	6	5	5		5	*	6	181	15
	2013	*	*	8	10	12	7	11		8	4	12	270	23
	2014	*	*	10	9	12	7	12		10	*	12	281	23
7	2012	*	*	10	10	12	6	10		10	2	12	244	30
	2013	*	*	5	8	8	4	7		6	*	8	202	11
	2014	*	*	9	10	11	7	10		10	*	11	266	16
8	2012		*	5	6	7	4	7		4	*	7	199	17
	2013	*	0	4	1	5	3	5		4	1	5	142	36
	2014	*	*	0	0	0	0	0		0	*	0	128	13
6-8	2012	*	2	21	22	25	15	22		19	6	25	624	62
	2013	4	4	17	19	25	14	23		18	7	25	614	70
	2014	*	2	19	19	23	14	22		20	3	23	675	52

NUMBER TESTED IN GRADES 6-8													
2012	3	8	48	54	62	31	51		45	17	62	1,571	
2013	7	12	49	61	70	31	57		52	18	70	1,687	
2014	4	10	37	46	52	28	47		39	13	52	1,689	

PERCENTAGE ADVANCED (Level 3)

Grade	Year	White	African Amer	Hispanic	Econ Disadv	Special Educ	LEP	At Risk	Migrant	Male	Female	All	District	Number Tested (All Students)
3	2012	*	*	0.0	0.0	0.0	0.0	0.0		0.0	0.0	0.0	3.3	18
	2013		0.0	7.7	5.3	5.0	*	5.3		11.1	0.0	5.0	4.3	20
	2014	*	*	0.0	0.0	4.5	0.0	5.9		8.3	0.0	4.5	4.8	22
4	2012	*	*	0.0	0.0	7.7	0.0	0.0		5.6	12.5	7.7	3.3	26
	2013	*	*	5.9	4.5	4.0	0.0	0.0		7.7	0.0	4.0	3.5	25
	2014	*	16.7	0.0	4.8	4.2	0.0	0.0		0.0	10.0	4.2	6.3	24
5	2012	*	*	6.3	9.5	8.7	*	5.6		7.7	10.0	8.7	4.9	23
	2013	*	*	4.3	8.7	10.3	7.1	13.6		15.0	0.0	10.3	7.4	29
	2014	16.7	33.3	5.0	17.4	12.5	0.0	8.0		21.1	0.0	12.5	10.3	32
3-5	2012	*	18.2	2.0	3.2	6.0	0.0	1.8		4.7	8.3	6.0	4.0	67
	2013	*	6.7	5.7	6.3	6.8	6.7	6.9		11.9	0.0	6.8	5.4	74
	2014	22.2	21.4	2.0	8.1	7.7	0.0	5.4		11.1	3.0	7.7	7.7	78

NUMBER TESTED IN GRADE 3-5													
2012	5	11	51	62	67	26	55		43	24	67	1,384	
2013	5	15	53	64	74	30	58		42	32	74	1,434	
2014	9	14	50	62	78	32	56		45	33	78	1,362	

PERCENTAGE ADVANCED (Level 3)

Grade	Year	White	African Amer	Hispanic	Econ Disadv	Special Educ	LEP	At Risk	Migrant	Male	Female	All	District	Number Tested (All Students)
6	2012		*	7.1	6.7	6.7	10.0	7.7		9.1	*	6.7	3.6	15
	2013	*	*	5.9	10.0	8.7	0.0	11.1		5.9	16.7	8.7	3.1	23
	2014	*	*	0.0	0.0	0.0	0.0	0.0		0.0	*	0.0	2.9	23
7	2012	*	*	0.0	0.0	0.0	0.0	0.0		0.0	0.0	0.0	1.0	30
	2013	*	*	0.0	0.0	0.0	0.0	0.0		0.0	*	0.0	3.5	11
	2014	*	*	8.3	6.7	6.3	0.0	7.7		0.0	*	6.3	3.9	16
8	2012		*	0.0	0.0	0.0	0.0	0.0		0.0	*	0.0	1.1	17
	2013	*	0.0	4.2	3.3	2.8	0.0	0.0		3.7	0.0	2.8	2.5	36
	2014	*	*	0.0	0.0	0.0	0.0	0.0		0.0	*	0.0	2.9	13
6-8	2012	*	0.0	2.1	1.9	1.6	3.2	2.0		2.2	0.0	1.6	1.9	62
	2013	0.0	0.0	4.1	4.9	4.3	0.0	3.5		3.8	5.6	4.3	3.0	70
	2014	*	0.0	2.7	2.2	1.9	0.0	2.1		0.0	7.7	1.9	3.3	52

NUMBER TESTED IN GRADE 6-8													
2012	3	8	48	54	62	31	51			45	17	62	1,571
2013	7	12	49	61	70	31	57			52	18	70	1,687
2014	4	10	37	46	52	28	47			39	13	52	1,689

AVERAGE PERCENTAGE OF ITEMS CORRECT BY REPORTING CATEGORY

Grade	Year	REPORTING CATEGORY		
		1. Understanding Across Genres (GR 3-5) 1. Understanding/Analysis Across Genres (GR 6-8)	2. Understanding/Analysis of Literary Texts	3. Understanding/Analysis of Informational Texts
3	2012	42.2	44.0	40.2
	2013	60.0	57.1	48.1
	2014	45.5	63.6	62.2
4	2012	54.3	62.1	55.0
	2013	53.5	60.6	60.9
	2014	66.7	59.8	57.1
5	2012	54.3	51.6	44.1
	2013	52.6	53.3	51.5
	2014	59.8	60.4	59.6
3-5	2012	51.1	53.6	47.3
	2013	54.9	56.8	53.7
	2014	57.9	61.1	59.6

AVERAGE PERCENTAGE OF ITEMS CORRECT BY REPORTING CATEGORY

Grade	Year	REPORTING CATEGORY		
		1. Understanding Across Genres (GR 3-5) 1. Understanding/Analysis Across Genres (GR 6-8)	2. Understanding/Analysis of Literary Texts	3. Understanding/Analysis of Informational Texts
6	2012	40.0	58.8	44.3
	2013	47.3	48.9	55.6
	2014	44.0	42.4	49.4
7	2012	59.2	52.7	44.4
	2013	38.6	41.2	37.0
	2014	43.8	44.5	46.7
8	2012	55.1	55.6	51.8
	2013	71.9	66.2	60.9
	2014	72.1	67.5	67.8
6-8	2012	53.4	55.0	46.4
	2013	58.6	56.6	55.4
	2014	51.0	49.3	53.1

PERCENTAGE SATISFACTORY (Levels 2 and 3)

Test	Year	White	African Amer	Hispanic	Econ Disadv	Special Educ	LEP	At Risk	Migrant	Male	Female	All	District
ENGLISH I	2012												
	2013												
	2014	*	*	25.0	35.7	44.4	0.0	33.3		37.5	*	44.4	50.6
Tests Taken	2012												
	2013												
	2014	3	3	12	14	18	7	15		16	2	18	405
ENGLISH II	2012												
	2013												
	2014	*	*	60.0	66.7	66.7	50.0	61.5		66.7	*	66.7	65.3
Tests Taken	2012												
	2013												
	2014	1	4	10	12	15	8	13		12	3	15	340

NUMBER UNSATISFACTORY (Level 1)

Test	Year	White	African Amer	Hispanic	Econ Disadv	Special Educ	LEP	At Risk	Migrant	Male	Female	All	District
ENGLISH I	2012												
	2013												
	2014	*	*	9	9	10	7	10		10	*	10	200
Tests Taken	2012												
	2013												
	2014	3	3	12	14	18	7	15		16	2	18	405
ENGLISH II	2012												
	2013												
	2014	*	*	4	4	5	4	5		4	*	5	118
Tests Taken	2012												
	2013												
	2014	1	4	10	12	15	8	13		12	3	15	340

PERCENTAGE ADVANCED (Level 3)

Test	Year	White	African Amer	Hispanic	Econ Disadv	Special Educ	LEP	At Risk	Migrant	Male	Female	All	District
ENGLISH I	2012												
	2013												
	2014	*	*	0.0	0.0	5.6	0.0	0.0		6.3	*	5.6	3.5
Tests Taken	2012												
	2013												
	2014	3	3	12	14	18	7	15		16	2	18	405
ENGLISH II	2012												
	2013												
	2014	*	*	10.0	0.0	13.3	12.5	7.7		16.7	*	13.3	12.6
Tests Taken	2012												
	2013												
	2014	1	4	10	12	15	8	13		12	3	15	340

AVERAGE PERCENTAGE OF ITEMS CORRECT BY REPORTING CATEGORY

ENGLISH I	1. Understanding & Analysis Across Genres	2. Understanding & Analysis of Literary Texts	3. Understanding & Analysis of Informational Texts	4. Literary Composition ¹	5. Revision	6. Editing
2012						
2013						
2014	62.5	50.6	53.7	2.2	50.6	53.7

ENGLISH II	1. Understanding & Analysis Across Genres	2. Understanding & Analysis of Literary Texts	3. Understanding & Analysis of Informational Texts	4. Expository Composition ¹	5. Revision	6. Editing
2012						
2013						
2014	55.0	54.8	50.4	2.5	38.5	60.0

¹Average score points (range 0-6). A STAAR M composition is rated twice on a scale of 0 to 3, and the ratings are summed to determine score points for the composition. Score point scale: 0=Non-scorable; 2=Very Limited; 3=between Very Limited and Basic; 4=Basic; 5=between Basic and Satisfactory; 6=Satisfactory

PERCENTAGE SATISFACTORY (Levels 2 or 3)

Grade	Year	White	African Amer	Hispanic	Econ Disadv	Special Educ	LEP	At Risk	Migrant	Male	Female	All	District	Number Tested (All Students)
4	2012	*	*	40.0	45.8	50.0	35.7	42.1		41.2	66.7	50.0	57.5	26
	2013	*	*	56.3	60.0	62.5	55.6	53.3		53.8	72.7	62.5	48.9	24
	2014			57.1	31.3	40.9	44.0	14.3	28.6	28.6	63.6	44.0	47.7	25

NUMBER TESTED IN GRADE 4													
2012	2	4	20	24	26	14	19		17	9	26	475	
2013	3	5	16	20	24	9	15		13	11	24	452	
2014		7	16	22	25	7	14		14	11	25	449	

PERCENTAGE SATISFACTORY (Levels 2 or 3)

Grade	Year	White	African Amer	Hispanic	Econ Disadv	Special Educ	LEP	At Risk	Migrant	Male	Female	All	District	Number Tested (All Students)
7	2012	*	*	78.3	82.1	81.3	76.9	80.0		82.6	77.8	81.3	56.7	32
	2013		*	50.0	60.0	60.0	50.0	55.6		50.0	*	60.0	63.7	10
	2014		*	58.3	64.3	60.0	50.0	50.0		54.5	*	60.0	62.9	15

NUMBER TESTED IN GRADE 7													
2012	3	4	23	28	32	13	25			23	9	32	586
2013		2	8	10	10	6	9			8	2	10	509
2014		3	12	14	15	8	12			11	4	15	599

NUMBER UNSATISFACTORY (Level 1)

Grade	Year	White	African Amer	Hispanic	Econ Disadv	Special Educ	LEP	At Risk	Migrant	Male	Female	All	District	Number Tested (All Students)
4	2012	*	*	12	13	13	9	11		10	3	13	202	26
	2013	*	*	7	8	9	4	7		6	3	9	231	24
	2014		3	11	13	14	6	10		10	4	14	235	25

NUMBER TESTED IN GRADE 4													
2012	2	4	20	24	26	14	19		17	9	26	475	
2013	3	5	16	20	24	9	15		13	11	24	452	
2014		7	16	22	25	7	14		14	11	25	449	

NUMBER UNSATISFACTORY (Level 1)

Grade	Year	White	African Amer	Hispanic	Econ Disadv	Special Educ	LEP	At Risk	Migrant	Male	Female	All	District	Number Tested (All Students)
7	2012	*	*	5	5	6	3	5		4	2	6	254	32
	2013		*	4	4	4	3	4		4	*	4	185	10
	2014		*	5	5	6	4	6		5	*	6	222	15

NUMBER TESTED IN GRADE 7													
2012	3	4	23	28	32	13	25		23	9	32	586	
2013		2	8	10	10	6	9		8	2	10	509	
2014		3	12	14	15	8	12		11	4	15	599	

PERCENTAGE ADVANCED (Level 3)

Grade	Year	White	African Amer	Hispanic	Econ Disadv	Special Educ	LEP	At Risk	Migrant	Male	Female	All	District	Number Tested (All Students)
4	2012	*	*	0.0	0.0	0.0	0.0	0.0		0.0	0.0	0.0	5.3	26
	2013	*	*	12.5	10.0	12.5	11.1	6.7		7.7	18.2	12.5	8.6	24
	2014		0.0	0.0	0.0	4.0	0.0	0.0		7.1	0.0	4.0	8.5	25

NUMBER TESTED IN GRADE 4													
2012	2	4	20	24	26	14	19		17	9	26	475	
2013	3	5	16	20	24	9	15		13	11	24	452	
2014		7	16	22	25	7	14		14	11	25	449	

PERCENTAGE ADVANCED (Level 3)

Grade	Year	White	African Amer	Hispanic	Econ Disadv	Special Educ	LEP	At Risk	Migrant	Male	Female	All	District	Number Tested (All Students)
7	2012	*	*	8.7	3.6	6.3	0.0	4.0		4.3	11.1	6.3	2.7	32
	2013		*	0.0	10.0	10.0	0.0	0.0		12.5	*	10.0	6.3	10
	2014		*	8.3	14.3	13.3	0.0	0.0		9.1	*	13.3	6.3	15

NUMBER TESTED IN GRADE 7													
2012	3	4	23	28	32	13	25		23	9	32	586	
2013		2	8	10	10	6	9		8	2	10	509	
2014		3	12	14	15	8	12		11	4	15	599	

AVERAGE PERCENTAGE OF ITEMS CORRECT BY REPORTING CATEGORY

Grade	Year	REPORTING CATEGORY		
		1. Composition ¹ GR 4: Personal Narrative GR 7: Expository	2. Revision	3. Editing
4	2012	1.0	41.2	46.4
	2013	2.7	56.0	56.9
	2014	2.3	52.0	56.5
7	2012	1.1	52.2	55.9
	2013	2.6	54.6	54.7
	2014	2.7	50.3	48.8

¹Average score points (range 0-6). A STAAR M composition is rated twice on a scale of 0 to 3, and the ratings are summed to determine score points for the composition. Score point scale: 0=Non-scorable; 2=Very Limited; 3=between Very Limited and Basic; 4=Basic; 5=between Basic and Satisfactory; 6=Satisfactory

PERCENTAGE SATISFACTORY (Levels 2 or 3)

Grade	Year	White	African Amer	Hispanic	Econ Disadv	Special Educ	LEP	At Risk	Migrant	Male	Female	All	District	Number Tested (All Students)
3	2012	*	*	57.1	60.0	56.3	62.5	53.3		70.0	33.3	56.3	52.0	16
	2013		100.0	75.0	84.2	84.2	66.7	83.3		80.0	88.9	84.2	64.4	19
	2014	*	*	63.6	73.3	78.9	66.7	73.3		75.0	85.7	78.9	64.2	19
4	2012	*	*	77.8	81.8	82.6	83.3	83.3		82.4	83.3	82.6	61.2	23
	2013	*	*	75.0	75.0	74.1	66.7	66.7		66.7	83.3	74.1	61.7	27
	2014	*	100.0	81.3	81.8	84.0	75.0	73.3		86.7	80.0	84.0	70.3	25
5	2012	*	*	68.8	59.1	60.9	*	57.9		50.0	72.7	60.9	60.6	23
	2013	*	85.7	62.5	61.5	66.7	66.7	64.0		61.9	75.0	66.7	77.2	33
	2014	83.3	*	86.4	91.7	87.9	88.9	89.3		89.5	85.7	87.9	79.1	33
3-5	2012	*	55.6	68.8	67.8	67.7	80.0	65.4		69.2	65.2	67.7	58.7	62
	2013	*	82.4	69.6	72.5	73.4	66.7	70.3		67.4	81.8	73.4	69.1	79
	2014	80.0	100.0	79.6	83.6	84.4	81.3	81.0		84.8	83.9	84.4	72.7	77

NUMBER TESTED IN GRADES 3-5													
2012	5	9	48	59	62	25	52			39	23	62	1,354
2013	5	17	56	69	79	36	64			46	33	79	1,433
2014	10	13	49	61	77	32	58			46	31	77	1,378

PERCENTAGE SATISFACTORY (Levels 2 or 3)

Grade	Year	White	African Amer	Hispanic	Econ Disadv	Special Educ	LEP	At Risk	Migrant	Male	Female	All	District	Number Tested (All Students)
6	2012		*	21.4	26.7	26.7	30.0	30.8		18.2	*	26.7	46.2	15
	2013	*	*	53.3	55.6	47.6	45.5	47.4		37.5	*	47.6	54.3	21
	2014	*	*	16.7	21.4	17.6	22.2	18.8		20.0	*	17.6	52.0	17
7	2012	*	*	76.2	75.0	71.4	81.8	68.2		68.4	77.8	71.4	50.5	28
	2013	*		25.0	12.5	22.2	14.3	22.2		16.7	*	22.2	49.4	9
	2014	*	*	0.0	20.0	18.8	0.0	14.3		9.1	*	18.8	48.8	16
8	2012		*	64.3	64.3	63.2	72.7	62.5		71.4	*	63.2	46.2	19
	2013	*	100.0	71.4	82.8	79.4	69.2	73.1		76.0	88.9	79.4	71.4	34
	2014	*	*	88.9	83.3	85.7	100.0	84.6		75.0	100.0	85.7	71.0	14
6-8	2012	*	50.0	57.1	58.5	58.1	62.5	56.9		56.8	61.1	58.1	47.7	62
	2013	50.0	80.0	56.8	63.6	60.9	48.4	55.6		55.3	76.5	60.9	58.5	64
	2014	*	55.6	30.3	39.0	38.3	37.5	37.2		29.4	61.5	38.3	56.7	47

NUMBER TESTED IN GRADES 6-8													
2012	3	8	49	53	62	32	51			44	18	62	1,554
2013	8	10	44	55	64	31	54			47	17	64	1,659
2014	5	9	33	41	47	24	43			34	13	47	1,684

NUMBER UNSATISFACTORY (Level 1)

Grade	Year	White	African Amer	Hispanic	Econ Disadv	Special Educ	LEP	At Risk	Migrant	Male	Female	All	District	Number Tested (All Students)
3	2012	*	*	6	6	7	3	7		3	4	7	157	16
	2013		0	3	3	3	2	3		2	1	3	120	19
	2014	*	*	4	4	4	2	4		3	1	4	113	19
4	2012	*	*	4	4	4	2	3		3	1	4	182	23
	2013	*	*	5	6	7	5	7		5	2	7	181	27
	2014	*	0	3	4	4	2	4		2	2	4	138	25
5	2012	*	*	5	9	9	*	8		6	3	9	220	23
	2013	*	1	9	10	11	5	9		8	3	11	142	33
	2014	1	*	3	2	4	2	3		2	2	4	125	33
3-5	2012	*	4	15	19	20	5	18		12	8	20	559	62
	2013	*	3	17	19	21	12	19		15	6	21	443	79
	2014	2	0	10	10	12	6	11		7	5	12	376	77

NUMBER TESTED IN GRADES 3-5													
2012	5	9	48	59	62	25	52			39	23	62	1,354
2013	5	17	56	69	79	36	64			46	33	79	1,433
2014	10	13	49	61	77	32	58			46	31	77	1,378

NUMBER UNSATISFACTORY (Level 1)

Grade	Year	White	African Amer	Hispanic	Econ Disadv	Special Educ	LEP	At Risk	Migrant	Male	Female	All	District	Number Tested (All Students)
6	2012		*	11	11	11	7	9		9	*	11	276	15
	2013	*	*	7	8	11	6	10		10	*	11	272	21
	2014	*	*	10	11	14	7	13		12	*	14	271	17
7	2012	*	*	5	6	8	2	7		6	2	8	276	28
	2013	*		6	7	7	6	7		5	*	7	257	9
	2014	*	*	12	12	13	8	12		10	*	13	310	16
8	2012		*	5	5	7	3	6		4	*	7	260	19
	2013	*	0	6	5	7	4	7		6	1	7	159	34
	2014	*	*	1	2	2	0	2		2	0	2	149	14
6-8	2012	*	4	21	22	26	12	22		19	7	26	812	62
	2013	4	2	19	20	25	16	24		21	4	25	688	64
	2014	*	4	23	25	29	15	27		24	5	29	730	47

NUMBER TESTED IN GRADES 6-8													
2012	3	8	49	53	62	32	51			44	18	62	1,554
2013	8	10	44	55	64	31	54			47	17	64	1,659
2014	5	9	33	41	47	24	43			34	13	47	1,684

PERCENTAGE ADVANCED (Level 3)

Grade	Year	White	African Amer	Hispanic	Econ Disadv	Special Educ	LEP	At Risk	Migrant	Male	Female	All	District	Number Tested (All Students)
3	2012	*	*	0.0	0.0	0.0	0.0	0.0		0.0	0.0	0.0	4.0	16
	2013		16.7	8.3	10.5	10.5	16.7	11.1		10.0	11.1	10.5	7.4	19
	2014	*	*	9.1	20.0	21.1	0.0	20.0		16.7	28.6	21.1	7.6	19
4	2012	*	*	0.0	4.5	4.3	0.0	5.6		5.9	0.0	4.3	1.7	23
	2013	*	*	0.0	0.0	0.0	0.0	0.0		0.0	0.0	0.0	4.7	27
	2014	*	0.0	0.0	0.0	4.0	0.0	0.0		6.7	0.0	4.0	6.5	25
5	2012	*	*	0.0	0.0	0.0	*	0.0		0.0	0.0	0.0	0.7	23
	2013	*	0.0	4.2	3.8	3.0	6.7	4.0		4.8	0.0	3.0	3.9	33
	2014	0.0	*	4.5	8.3	6.1	5.6	7.1		5.3	7.1	6.1	6.0	33
3-5	2012	*	11.1	0.0	1.7	1.6	0.0	1.9		2.6	0.0	1.6	1.8	62
	2013	*	5.9	3.6	4.3	3.8	5.6	4.7		4.3	3.0	3.8	5.0	79
	2014	20.0	7.7	4.1	8.2	9.1	3.1	8.6		8.7	9.7	9.1	6.5	77

NUMBER TESTED IN GRADE 3-5													
2012	5	9	48	59	62	25	52		39	23	62	1,354	
2013	5	17	56	69	79	36	64		46	33	79	1,433	
2014	10	13	49	61	77	32	58		46	31	77	1,378	

PERCENTAGE ADVANCED (Level 3)

Grade	Year	White	African Amer	Hispanic	Econ Disadv	Special Educ	LEP	At Risk	Migrant	Male	Female	All	District	Number Tested (All Students)
6	2012		*	7.1	6.7	6.7	10.0	7.7		9.1	*	6.7	5.5	15
	2013	*	*	0.0	5.6	4.8	0.0	5.3		6.3	*	4.8	4.9	21
	2014	*	*	0.0	0.0	0.0	0.0	0.0		0.0	*	0.0	3.4	17
7	2012	*	*	4.8	8.3	7.1	0.0	4.5		10.5	0.0	7.1	1.1	28
	2013	*		0.0	0.0	0.0	0.0	0.0		0.0	*	0.0	3.0	9
	2014	*	*	0.0	0.0	0.0	0.0	0.0		0.0	*	0.0	2.3	16
8	2012		*	0.0	7.1	5.3	0.0	0.0		7.1	*	5.3	1.2	19
	2013	*	0.0	0.0	0.0	0.0	0.0	0.0		0.0	0.0	0.0	2.2	34
	2014	*	*	0.0	0.0	0.0	0.0	0.0		0.0	0.0	0.0	1.9	14
6-8	2012	*	0.0	4.1	7.5	6.5	3.1	3.9		9.1	0.0	6.5	2.6	62
	2013	0.0	0.0	0.0	1.8	1.6	0.0	1.9		2.1	0.0	1.6	3.4	64
	2014	*	0.0	0.0	0.0	0.0	0.0	0.0		0.0	0.0	0.0	2.6	47

NUMBER TESTED IN GRADE 6-8													
2012	3	8	49	53	62	32	51			44	18	62	1,554
2013	8	10	44	55	64	31	54			47	17	64	1,659
2014	5	9	33	41	47	24	43			34	13	47	1,684

AVERAGE PERCENTAGE OF ITEMS CORRECT BY REPORTING CATEGORY

Grade	Year	REPORTING CATEGORY				
		1. Numbers, Operations, and Quantitative Reasoning	2. Patterns, Relationships, and Algebraic Reasoning	3. Geometry and Spatial Reasoning	4. Measurement	5. Probability and Statistics
3	2012	49.5	43.7	51.8	43.8	47.5
	2013	66.8	66.7	68.4	64.0	73.7
	2014	67.2	68.4	73.7	71.1	67.4
4	2012	65.2	68.7	56.1	57.2	54.3
	2013	62.7	68.1	55.2	45.7	47.2
	2014	68.0	75.2	62.4	56.0	60.0
5	2012	40.7	45.2	37.0	45.7	44.9
	2013	50.2	50.3	43.4	55.6	50.5
	2014	60.4	50.9	57.1	61.1	60.9
3-5	2012	52.1	53.5	47.9	49.5	49.1
	2013	58.5	60.3	53.5	54.2	55.0
	2014	64.5	63.1	62.9	61.9	62.2

AVERAGE PERCENTAGE OF ITEMS CORRECT BY REPORTING CATEGORY

Grade	Year	REPORTING CATEGORY				
		1. Numbers, Operations, and Quantitative Reasoning	2. Patterns, Relationships, and Algebraic Reasoning	3. Geometry and Spatial Reasoning	4. Measurement	5. Probability and Statistics
6	2012	44.3	39.3	42.2	35.6	38.9
	2013	44.2	40.5	63.5	30.2	43.7
	2014	33.2	34.7	38.2	31.4	34.3
7	2012	45.5	43.9	47.8	36.9	48.2
	2013	37.4	50.0	50.0	22.2	33.3
	2014	35.8	37.5	39.1	27.1	42.2
8	2012	45.3	52.6	46.5	41.6	40.8
	2013	39.4	54.5	44.6	47.6	59.2
	2014	40.0	53.9	47.6	42.9	58.0
6-8	2012	45.1	45.5	46.0	38.0	43.7
	2013	40.7	49.3	51.6	38.3	50.5
	2014	36.1	41.4	41.3	33.3	44.1

PERCENTAGE SATISFACTORY (Levels 2 and 3)

Test	Year	White	African Amer	Hispanic	Econ Disadv	Special Educ	LEP	At Risk	Migrant	Male	Female	All	District
ALGEBRA I	2012	*	*	*	16.7	25.0	*	14.3		*	*	25.0	32.5
	2013		14.3	27.3	26.7	22.2	37.5	26.7		23.1	*	22.2	36.9
	2014	*	*	60.0	61.5	61.1	*	50.0		66.7	*	61.1	46.1
Tests Taken	2012	1	2	5	6	8	4	7		5	3	8	280
	2013		7	11	15	18	8	15		13	5	18	339
	2014	4	4	10	13	18	5	14		15	3	18	360

NUMBER UNSATISFACTORY (Level 1)

Test	Year	White	African Amer	Hispanic	Econ Disadv	Special Educ	LEP	At Risk	Migrant	Male	Female	All	District
ALGEBRA I	2012	*	*	*	5	6	*	6		*	*	6	189
	2013		6	8	11	14	5	11		10	*	14	214
	2014	*	*	4	5	7	*	7		5	*	7	194
Tests Taken	2012	1	2	5	6	8	4	7		5	3	8	280
	2013		7	11	15	18	8	15		13	5	18	339
	2014	4	4	10	13	18	5	14		15	3	18	360

PERCENTAGE ADVANCED (Level 3)

Test	Year	White	African Amer	Hispanic	Econ Disadv	Special Educ	LEP	At Risk	Migrant	Male	Female	All	District
ALGEBRA I	2012	*	*	*	0.0	0.0	*	0.0		*	*	0.0	0.4
	2013		0.0	0.0	0.0	0.0	0.0	0.0		0.0	*	0.0	0.0
	2014	*	*	0.0	0.0	5.6	*	0.0		6.7	*	5.6	1.4
Tests Taken	2012	1	2	5	6	8	4	7		5	3	8	280
	2013		7	11	15	18	8	15		13	5	18	339
	2014	4	4	10	13	18	5	14		15	3	18	360

AVERAGE PERCENTAGE OF ITEMS CORRECT BY REPORTING CATEGORY

ALGEBRA I	1. Functional Relationships	2. Properties and Attributes of Functions	3. Linear Functions	4. Linear Equations and Inequalities	5. Quadratic and Other Nonlinear Functions
2012	52.1	27.5	45.8	45.3	25.0
2013	55.6	41.1	31.0	38.9	41.3
2014	50.0	43.3	46.3	49.3	55.6

PERCENTAGE SATISFACTORY (Levels 2 or 3)

Grade	Year	White	African Amer	Hispanic	Econ Disadv	Special Educ	LEP	At Risk	Migrant	Male	Female	All	District	Number Tested (All Students)
5	2012	50.0	*	53.8	44.4	47.4	*	43.8		50.0	44.4	47.4	48.8	19
	2013	*	*	47.8	47.8	48.3	50.0	59.1		52.6	40.0	48.3	58.1	29
	2014	66.7	*	63.2	68.2	66.7	66.7	65.4		66.7	66.7	66.7	55.5	30

NUMBER TESTED IN GRADE 5													
2012	6	4	13	18	19	3	16		10	9	19	531	
2013	2	4	23	23	29	14	22		19	10	29	540	
2014	6	5	19	22	30	18	26		18	12	30	501	

PERCENTAGE SATISFACTORY (Levels 2 or 3)

Grade	Year	White	African Amer	Hispanic	Econ Disadv	Special Educ	LEP	At Risk	Migrant	Male	Female	All	District	Number Tested (All Students)
8	2012	*	*	78.6	78.6	80.0	81.8	76.5		93.3	*	80.0	58.2	20
	2013	*	100.0	60.9	76.7	71.4	53.3	65.5		68.0	80.0	71.4	59.3	35
	2014	*	*	44.4	70.0	58.3	50.0	58.3		57.1	*	58.3	63.5	12

NUMBER TESTED IN GRADE 8													
2012	1	5	14	14	20	11	17		15	5	20	457	
2013	4	7	23	30	35	15	29		25	10	35	526	
2014	1	2	9	10	12	8	12		7	5	12	474	

NUMBER UNSATISFACTORY (Level 1)

Grade	Year	White	African Amer	Hispanic	Econ Disadv	Special Educ	LEP	At Risk	Migrant	Male	Female	All	District	Number Tested (All Students)
5	2012	1	*	6	10	10	*	9		5	5	10	272	19
	2013	*	*	12	12	15	7	9		9	6	15	226	29
	2014	2	*	7	7	10	6	9		6	4	10	223	30

NUMBER TESTED IN GRADE 5													
2012	6	4	13	18	19	3	16		10	9	19	531	
2013	2	4	23	23	29	14	22		19	10	29	540	
2014	6	5	19	22	30	18	26		18	12	30	501	

NUMBER UNSATISFACTORY (Level 1)

Grade	Year	White	African Amer	Hispanic	Econ Disadv	Special Educ	LEP	At Risk	Migrant	Male	Female	All	District	Number Tested (All Students)
8	2012	*	*	3	3	4	2	4		1	*	4	191	20
	2013	*	0	9	7	10	7	10		8	2	10	214	35
	2014	*	*	5	3	5	4	5		3	*	5	173	12

NUMBER TESTED IN GRADE 8													
2012	1	5	14	14	20	11	17		15	5	20	457	
2013	4	7	23	30	35	15	29		25	10	35	526	
2014	1	2	9	10	12	8	12		7	5	12	474	

PERCENTAGE ADVANCED (Level 3)

Grade	Year	White	African Amer	Hispanic	Econ Disadv	Special Educ	LEP	At Risk	Migrant	Male	Female	All	District	Number Tested (All Students)
5	2012	*	*	0.0	5.6	5.3	*	0.0		10.0	0.0	5.3	6.2	19
	2013	*	*	4.3	4.3	6.9	7.1	9.1		10.5	0.0	6.9	6.1	29
	2014	16.7	*	5.3	13.6	10.0	5.6	7.7		11.1	8.3	10.0	7.6	30

NUMBER TESTED IN GRADE 5													
2012	2	4	13	18	19	3	16		10	9	19	531	
2013	2	4	23	23	29	14	22		19	10	29	540	
2014	6	5	19	22	30	18	26		18	12	30	501	

PERCENTAGE ADVANCED (Level 3)

Grade	Year	White	African Amer	Hispanic	Econ Disadv	Special Educ	LEP	At Risk	Migrant	Male	Female	All	District	Number Tested (All Students)
8	2012	*	*	0.0	0.0	0.0	0.0	0.0		0.0	*	0.0	0.4	20
	2013	*	0.0	0.0	3.3	2.9	0.0	3.4		4.0	0.0	2.9	2.5	35
	2014	*	*	0.0	0.0	0.0	0.0	0.0		0.0	*	0.0	3.8	12

NUMBER TESTED IN GRADE 8													
2012	1	5	14	14	20	11	17		15	5	20	457	
2013	4	7	23	30	35	15	29		25	10	35	526	
2014	1	2	9	10	12	8	12		7	5	12	474	

AVERAGE PERCENTAGE OF ITEMS CORRECT BY REPORTING CATEGORY

Grade	Year	REPORTING CATEGORY			
		1. Matter and Energy	2. Force, Motion, and Energy	3. Earth and Space	4. Organisms and Environments
5	2012	57.9	58.6	52.1	55.5
	2013	54.6	66.8	59.7	59.9
	2014	65.6	81.3	62.0	71.5
8	2012	57.7	65.5	66.8	57.3
	2013	61.3	65.7	69.9	62.3
	2014	63.6	65.0	62.1	59.8

PERCENTAGE SATISFACTORY (Levels 2 and 3)

Test	Year	White	African Amer	Hispanic	Econ Disadv	Special Educ	LEP	At Risk	Migrant	Male	Female	All	District
BIOLOGY	2012	*	*	*	50.0	50.0	*	42.9		*	*	50.0	31.7
	2013		50.0	45.5	50.0	47.1	50.0	53.3		50.0	*	47.1	42.6
	2014	*	*	60.0	46.2	52.9	*	42.9		57.1	*	52.9	46.6
Tests Taken	2012	4	2	5	6	8	4	7		5	3	8	262
	2013		6	11	14	17	8	15		12	5	17	331
	2014	4	3	10	13	17	5	14		14	3	17	350

NUMBER UNSATISFACTORY (Level 1)

Test	Year	White	African Amer	Hispanic	Econ Disadv	Special Educ	LEP	At Risk	Migrant	Male	Female	All	District
BIOLOGY	2012	*	*	*	3	4	*	4		*	*	4	179
	2013		3	6	7	9	4	7		6	*	9	190
	2014	*	*	4	7	8	*	8		6	*	8	187
Tests Taken	2012	4	2	5	6	8	4	7		5	3	8	262
	2013		6	11	14	17	8	15		12	5	17	331
	2014	4	3	10	13	17	5	14		14	3	17	350

PERCENTAGE ADVANCED (Level 3)

Test	Year	White	African Amer	Hispanic	Econ Disadv	Special Educ	LEP	At Risk	Migrant	Male	Female	All	District
BIOLOGY	2012	*	*	*	0.0	0.0	*	0.0		*	*	0.0	0.0
	2013		0.0	0.0	0.0	0.0	0.0	0.0		0.0	*	0.0	0.0
	2014	*	*	0.0	0.0	0.0	*	0.0		0.0	*	0.0	1.1
Tests Taken	2012	1	2	5	6	8	4	7		5	3	8	262
	2013		6	11	14	17	8	15		12	5	17	331
	2014	4	3	10	13	17	5	14		14	3	17	350

AVERAGE PERCENTAGE OF ITEMS CORRECT BY REPORTING CATEGORY

BIOLOGY	1. Cell Structure and Function	2. Mechanisms of Genetics	3. Biological Evolution and Classification	4. Biological Processes and Systems	5. Interdependence within Environmental Systems
2012	44.4	39.1	54.7	45.8	40.3
2013	49.7	45.6	51.5	47.7	36.6
2014	43.1	50.0	55.1	45.1	47.1

PERCENTAGE SATISFACTORY (Levels 2 or 3)

Grade	Year	White	African Amer	Hispanic	Econ Disadv	Special Educ	LEP	At Risk	Migrant	Male	Female	All	District	Number Tested (All Students)
8	2012	*	*	71.4	78.6	75.0	72.7	70.6		86.7	*	75.0	52.3	20
	2013	*	100.0	63.6	78.6	75.8	64.3	70.4		73.9	80.0	75.8	59.5	33
	2014	*	*	66.7	80.0	75.0	62.5	75.0		71.4	*	75.0	59.3	12

NUMBER TESTED IN GRADE 8													
2012	1	5	14	14	20	11	17		15	5	20	451	
2013	4	7	22	28	33	14	27		23	10	33	516	
2014	1	2	9	10	12	8	12		7	5	12	479	

NUMBER UNSATISFACTORY (Level 1)

Grade	Year	White	African Amer	Hispanic	Econ Disadv	Special Educ	LEP	At Risk	Migrant	Male	Female	All	District	Number Tested (All Students)
8	2012	*	*	4	3	5	3	5		2	*	5	215	20
	2013	*	0	8	6	8	5	8		6	2	8	209	33
	2014	*	*	3	2	3	3	3		2	*	3	195	12

NUMBER TESTED IN GRADE8													
2012	1	5	14	14	20	11	17		15	5	20	451	
2013	4	7	22	28	33	14	27		23	10	33	516	
2014	1	2	9	10	12	8	12		7	5	12	479	

PERCENTAGE ADVANCED (Level 3)

Grade	Year	White	African Amer	Hispanic	Econ Disadv	Special Educ	LEP	At Risk	Migrant	Male	Female	All	District	Number Tested (All Students)
8	2012	*	*	14.3	7.1	10.0	18.2	11.8		13.3	*	10.0	2.9	20
	2013	*	0.0	4.5	3.6	3.0	7.1	3.7		0.0	10.0	3.0	1.9	33
	2014	*	*	11.1	10.0	8.3	12.5	8.3		0.0	*	8.3	3.5	12

NUMBER TESTED IN GRADE 8													
2012	1	5	14	14	20	11	17		15	5	20	451	
2013	4	7	22	28	33	14	27		23	10	33	516	
2014	1	2	9	10	12	8	12		7	5	12	479	

AVERAGE PERCENTAGE OF ITEMS CORRECT BY REPORTING CATEGORY

Grade	Year	REPORTING CATEGORY			
		1. History	2. Geography and Culture	3. Government and Citizenship	4. Economics, Science, Technology, and Society
8	2012	60.3	63.0	53.5	57.5
	2013	59.5	63.9	53.0	62.1
	2014	56.3	63.3	55.8	76.4

PERCENTAGE SATISFACTORY (Levels 2 and 3)

Test	Year	White	African Amer	Hispanic	Econ Disadv	Special Educ	LEP	At Risk	Migrant	Male	Female	All	District
U.S. HISTORY	2012												
	2013												
	2014	*	*	0.0	0.0	0.0	*	0.0		*	*	0.0	0.0
Tests Taken	2012												
	2013												
	2014	1	2	6	7	9	5	9		5	4	9	226

NUMBER UNSATISFACTORY (Level 1)

Test	Year	White	African Amer	Hispanic	Econ Disadv	Special Educ	LEP	At Risk	Migrant	Male	Female	All	District
U.S. HISTORY	2012												
	2013												
	2014	*	*	6	7	9	*	9		*	*	9	226
Tests Taken	2012												
	2013												
	2014	1	2	6	7	9	5	9		5	4	9	226

PERCENTAGE ADVANCED (Level 3)

Test	Year	White	African Amer	Hispanic	Econ Disadv	Special Educ	LEP	At Risk	Migrant	Male	Female	All	District
U.S. HISTORY	2012												
	2013												
	2014	*	*	0.0	0.0	0.0	*	0.0		*	*	0.0	0.0
Tests Taken	2012												
	2013												
	2014	1	2	6	7	9	5	9		5	4	9	226

AVERAGE PERCENTAGE OF ITEMS CORRECT BY REPORTING CATEGORY

U.S. HISTORY	1. History	2. Geography and Culture	3. Government and Citizenship	4. Economics, Science, Technology, and Society
2012				
2013				
2014	43.1	42.0	52.8	45.3

PERCENTAGE AT OR ABOVE THE 40th PERCENTILE on the ITBS

Grade	Year	READING TOTAL (**READING PROFILE TOTAL)				
		At Risk	Not At Risk	All	District	Number Tested (All Students)
K**	2012	27.8	66.0	62.7	62.2	399
	2013	43.6	71.0	67.7	60.8	452
	2014	51.9	61.3	59.9	60.7	409
1	2012	52.4	69.0	65.3	55.4	412
	2013	50.0	70.8	67.4	55.0	429
	2014	29.9	60.1	55.6	47.2	455
2	2012	42.1	83.6	65.9	49.8	393
	2013	41.9	79.2	62.7	50.2	394
	2014	38.5	84.3	64.2	44.4	397
K-2	2012	43.3	71.4	64.6	55.8	805
	2013	44.0	72.3	66.5	56.7	1,275
	2014	40.9	64.8	59.8	53.1	1,261
# Tested (GR K-2)	2012	291	923	1,204	21,034	
	2013	352	1,379	1,727	28,878	
	2014	345	1,329	1,670	28,063	

Grade	Year	MATHEMATICS TOTAL (**MATHEMATICS)				
		At Risk	Not At Risk	All	District	Number Tested (All Students)
K**	2012	36.8	68.7	51.3	55.1	887
	2013	39.6	68.9	53.1	55.1	902
	2014	35.0	65.6	48.7	55.0	858
1	2012	47.0	67.4	55.0	50.7	856
	2013	48.2	67.6	56.4	52.0	870
	2014	43.3	67.2	54.2	46.0	866
2	2012	57.5	85.7	66.0	57.9	779
	2013	62.1	81.4	67.6	56.2	820
	2014	54.5	80.5	62.2	52.0	794
K-2	2012	47.5	72.3	57.1	54.5	2,522
	2013	50.7	71.3	58.8	54.4	2,592
	2014	44.9	69.6	54.8	51.0	2,518
# Tested (GR K-2)	2012	1,545	987	2,522	40,477	
	2013	1,575	1,021	2,592	40,966	
	2014	1,502	1,018	2,518	40,233	

PERCENTAGE AT OR ABOVE THE 40th PERCENTILE

Grade	Year	White	African Amer	Hispanic	Econ Disadv	Special Educ	LEP	At Risk	Migrant	Male	Female	All	District	Number Tested (All Students)
K**	2012	84.4	59.0	53.0	50.8	50.0	28.6	27.8		56.2	69.4	62.7	62.2	399
	2013	85.6	65.3	58.9	59.5	24.2	40.6	43.6		64.9	71.0	67.7	60.8	452
	2014	85.5	52.5	50.0	53.7	45.5	33.3	51.9		55.4	64.4	59.9	60.7	409
1	2012	76.1	54.9	63.5	59.8	42.1	48.6	52.4		63.8	66.8	65.3	55.4	412
	2013	89.1	67.9	56.3	59.1	36.6	46.5	50.0		66.3	68.3	67.4	55.0	429
	2014	74.7	57.3	45.1	50.0	17.1	27.5	29.9		53.0	58.7	55.6	47.2	455
2	2012	86.7	53.3	61.6	55.3	14.3	29.3	42.1		63.1	69.0	65.9	49.8	393
	2013	82.6	54.0	56.2	55.3	31.8	38.9	41.9		61.1	64.5	62.7	50.2	394
	2014	83.1	65.4	54.3	56.8	23.4	39.0	38.5		59.9	68.5	64.2	44.4	397
1-2	2012	81.3	54.1	62.6	57.6	28.8	38.2	45.5		63.5	67.9	65.6	52.7	805
	2013	85.8	62.5	57.1	58.0	31.4	42.3	44.1		64.2	68.1	66.0	55.4	1,275
	2014	81.3	57.8	49.7	53.4	25.5	33.3	38.9		55.8	63.8	59.7	50.6	1,261
# Tested (GR K-2)	2012	182	183	398	559	73	76	255		419	386	805	14,095	
	2013	275	272	644	878	118	111	297		664	611	1,275	21,640	
	2014	251	287	628	875	110	108	293		650	611	1,261	21,214	

**Kindergarten subscore is Reading Profile Total; no Reading Total subscore available.

NUMBER AT OR ABOVE THE 80th PERCENTILE

Grade	Year	White	African Amer	Hispanic	Econ Disadv	Special Educ	LEP	At Risk	Migrant	Male	Female	All	District	Number Tested (All Students)
K**	2012	44	19	36	43	6	2	1		48	61	109	2,027	399
	2013	49	33	46	70	4	2	6		75	69	144	2,108	452
	2014	41	14	33	49	1	2	10		42	59	101	1,938	409
1	2012	52	26	68	85	7	7	22		83	75	158	1,963	412
	2013	62	23	66	84	4	6	13		75	86	161	2,017	429
	2014	39	25	43	58	1	2	3		65	55	120	1,561	455
2	2012	45	17	31	39	1	0	14		54	44	98	1,017	393
	2013	39	9	40	48	3	3	11		54	43	97	1,045	394
	2014	44	11	32	38	3	3	9		41	51	92	950	397
1-2	2012	97	43	99	124	8	7	36		137	119	256	2,981	805
	2013	150	65	152	202	11	11	30		204	198	402	5,171	1,275
	2014	124	50	108	145	5	7	22		148	165	313	4,449	1,261
# Tested (GR K-2)	2012	182	183	398	559	73	76	255		419	386	805	14,095	
	2013	275	272	644	878	118	111	297		664	611	1,275	21,640	
	2014	251	287	628	875	110	108	293		650	611	1,261	21,214	

**Kindergarten subscore is Reading Profile Total; no Reading Total subscore available.

PERCENTAGE AT OR ABOVE THE 40th PERCENTILE

Grade	Year	White	African Amer	Hispanic	Econ Disadv	Special Educ	LEP	At Risk	Migrant	Male	Female	All	District	Number Tested (All Students)
K**	2012	85.9	59.1	44.0	45.0	44.4	36.7	36.8		47.5	55.5	51.3	55.1	887
	2013	80.8	54.3	47.1	47.7	29.2	39.1	39.6		54.5	51.4	53.1	55.1	902
	2014	86.4	55.6	41.4	43.5	36.4	33.4	35.0		44.3	52.8	48.7	55.0	858
1	2012	78.3	46.7	52.4	51.3	25.0	46.6	47.0		55.9	54.0	55.0	50.7	856
	2013	83.3	54.7	51.8	52.6	42.6	48.2	48.2		58.0	54.7	56.4	52.0	870
	2014	85.0	63.6	47.1	50.2	25.5	42.9	43.3		56.9	50.9	54.2	46.0	866
2	2012	83.5	61.1	63.3	62.9	21.3	58.7	57.5		69.6	62.0	66.0	57.9	779
	2013	86.0	60.7	65.7	64.4	41.8	63.3	62.1		68.4	66.7	67.6	56.2	820
	2014	85.7	53.2	59.1	59.2	33.3	59.1	54.5		64.1	60.2	62.2	52.0	794
K-2	2012	82.6	55.6	52.7	52.7	30.7	46.8	47.5		57.2	57.0	57.1	54.5	2,522
	2013	83.3	56.4	54.7	54.7	38.4	50.1	50.7		60.1	57.4	58.8	54.4	2,592
	2014	85.7	58.0	49.0	50.8	31.2	44.9	44.9		55.2	54.5	54.8	51.0	2,518
# Tested (GR K-2)	2012	282	270	1,900	2,084	153	1,360	1,545		1,329	1,193	2,522	40,477	
	2013	281	280	1,940	2,150	164	1,388	1,575		1,372	1,220	2,592	40,966	
	2014	259	288	1,868	2,079	154	1,311	1,502		1,298	1,220	2,518	40,233	

**Kindergarten test is Mathematics; no Mathematics Total score available.

NUMBER AT OR ABOVE THE 80th PERCENTILE

Grade	Year	White	African Amer	Hispanic	Econ Disadv	Special Educ	LEP	At Risk	Migrant	Male	Female	All	District	Number Tested (All Students)
K**	2012	41	17	78	90	6	32	31		65	82	147	2,472	887
	2013	45	16	67	78	2	31	33		75	62	137	2,594	902
	2014	35	8	77	87	2	38	47		59	71	130	2,598	858
1	2012	44	12	115	126	5	61	71		105	73	178	2,473	856
	2013	52	15	111	121	7	66	70		105	82	187	2,609	870
	2014	46	24	95	122	4	59	62		110	73	183	2,166	866
2	2012	51	20	141	156	2	81	103		128	94	222	2,843	779
	2013	49	17	170	177	11	105	134		146	97	243	2,626	820
	2014	53	11	144	150	9	97	104		117	100	217	2,408	794
K-2	2012	136	49	334	372	13	174	205		298	249	547	7,788	2,522
	2013	146	48	348	376	20	202	237		326	241	567	7,829	2,592
	2014	134	43	316	359	15	194	213		286	244	530	7,172	2,518
# Tested (GR K-2)	2012	282	270	1,900	2,084	153	1,360	1,545		1,329	1,193	2,522	40,477	
	2013	281	280	1,940	2,150	164	1,388	1,575		1,372	1,220	2,592	40,966	
	2014	259	288	1,868	2,079	154	1,311	1,502		1,298	1,220	2,518	40,233	

**Kindergarten test is Mathematics; no Mathematics Total score available.

PERCENTAGE AT OR ABOVE THE 40th PERCENTILE

Grade	Year	White	African Amer	Hispanic	Econ Disadv	Special Educ	LEP	At Risk	Migrant	Male	Female	All	District	Number Tested (All Students)
1	2012	76.1	52.2	66.6	64.8	43.1	65.1	64.5		67.9	63.8	66.0	62.5	855
	2013	80.2	52.3	63.6	63.2	55.7	63.4	62.6		68.4	61.0	64.8	63.6	870
	2014	82.5	64.2	64.2	65.0	45.1	61.9	61.4		68.4	64.2	66.5	58.6	862
2	2012	79.1	56.7	67.2	66.4	36.2	64.4	61.9		68.6	67.1	67.9	63.6	779
	2013	80.2	53.9	71.9	68.4	61.1	72.0	69.2		69.9	71.1	70.5	60.6	819
	2014	79.1	54.4	66.6	65.4	44.6	69.0	63.1		68.8	65.0	67.0	59.2	793
1-2	2012	77.6	54.4	66.9	65.6	39.8	64.8	63.2		68.3	65.4	66.9	63.0	1,634
	2013	80.2	53.1	67.6	65.8	58.3	67.6	66.2		69.1	65.8	67.6	62.1	1,689
	2014	80.7	60.1	65.3	65.2	44.8	65.4	62.3		68.6	64.6	66.7	58.9	1,655
# Tested (GR 1-2)	2012	183	182	1,227	1,359	98	883	1,059		860	774	1,634	26,880	
	2013	182	175	1,285	1,417	115	923	1,088		887	802	1,689	27,003	
	2014	171	188	1,226	1,367	116	867	1,030		881	774	1,655	26,955	

NUMBER AT OR ABOVE THE 80th PERCENTILE

Grade	Year	White	African Amer	Hispanic	Econ Disadv	Special Educ	LEP	At Risk	Migrant	Male	Female	All	District	Number Tested (All Students)
1	2012	37	21	192	209	10	135	149		151	107	258	4,060	855
	2013	42	20	195	211	20	140	144		156	111	267	4,150	870
	2014	41	34	169	201	9	111	119		158	109	267	3,708	862
2	2012	45	19	167	185	4	111	137		119	122	241	3,820	779
	2013	43	19	224	236	16	158	194		163	131	294	3,436	819
	2014	46	14	165	180	11	128	140		135	102	237	3,288	793
1-2	2012	82	40	359	394	14	246	286		270	229	499	7,880	1,634
	2013	85	39	419	447	36	298	338		319	242	561	7,586	1,689
	2014	87	48	334	381	20	239	259		293	211	504	6,996	1,655
# Tested (GR 1-2)	2012	183	182	1,227	1,359	98	883	1,059		860	774	1,634	26,880	
	2013	182	175	1,285	1,417	115	923	1,088		887	802	1,689	27,003	
	2014	171	188	1,226	1,367	116	867	1,030		881	774	1,655	26,955	

PERCENTAGE AT OR ABOVE THE 40th PERCENTILE

Grade	Year	White	African Amer	Hispanic	Econ Disadv	Special Educ	LEP	At Risk	Migrant	Male	Female	All	District	Number Tested (All Students)
K	2012	*		86.4	86.5	73.3	86.7	86.7		83.7	89.6	86.4	89.9	448
	2013	*		90.3	90.4	84.6	90.0	90.0		89.8	90.6	90.2	89.7	438
	2014	*	*	88.3	88.4	90.0	88.3	88.2		84.2	92.4	88.5	88.6	445
1	2012			89.7	90.3	50.0	89.8	89.8		87.4	92.2	89.7	89.2	445
	2013	*		90.9	91.0	68.4	90.9	90.9		87.6	95.3	91.0	87.6	433
	2014	*		88.0	88.9	57.1	87.9	88.0		88.1	88.2	88.2	84.6	414
2	2012			93.8	93.6	53.8	93.7	93.7		93.1	94.6	93.8	93.3	389
	2013			95.0	95.1	72.7	95.1	95.1		93.6	96.5	95.0	93.6	419
	2014	*		93.2	93.3	55.6	93.4	93.1		89.9	97.1	93.2	91.8	370
K-2	2012	*		89.8	90.0	59.5	89.8	89.8		87.8	92.1	89.8	90.8	1,282
	2013	*		92.0	92.1	74.4	92.0	91.9		90.2	94.1	92.0	90.3	1,290
	2014	100.0	*	89.7	90.1	64.3	89.7	89.6		87.4	92.4	89.8	88.2	1,229
# Tested (GR K-2)	2012	4		1,275	1,239	42	1,251	1,250		689	593	1,282	18,911	
	2013	2		1,281	1,253	43	1,269	1,267		696	594	1,290	18,629	
	2014	7	1	1,214	1,176	42	1,178	1,185		635	594	1,229	18,008	

NUMBER AT OR ABOVE THE 80th PERCENTILE

Grade	Year	White	African Amer	Hispanic	Econ Disadv	Special Educ	LEP	At Risk	Migrant	Male	Female	All	District	Number Tested (All Students)
K	2012	*		228	226	6	228	228		115	116	231	3,679	448
	2013	*		247	241	5	244	243		128	121	249	3,798	438
	2014	*	*	200	195	1	188	190		75	128	203	3,313	445
1	2012			173	169	1	167	168		87	86	173	2,437	445
	2013	*		178	173	1	178	178		91	88	179	2,394	433
	2014	*		152	148	2	148	149		74	78	152	2,123	414
2	2012			192	188	3	187	187		86	107	193	2,934	389
	2013			228	221	2	221	220		109	119	228	2,899	419
	2014	*		194	189	2	191	191		89	108	197	2,596	370
K-2	2012	*		593	583	10	582	583		288	309	597	9,050	1,282
	2013	*		653	635	8	643	641		328	328	656	9,091	1,290
	2014	2	*	546	532	5	527	530		238	314	552	8,032	1,229
# Tested (GR K-2)	2012	4		1,275	1,239	42	1,251	1,250		689	593	1,282	18,911	
	2013	2		1,281	1,253	43	1,269	1,267		696	594	1,290	18,629	
	2014	7	1	1,214	1,176	42	1,178	1,185		635	594	1,229	18,008	

PERCENTAGE DEMONSTRATING IMPROVEMENT

Grade	Level 1 in 2013		Level 2 in 2013		Level 3 in 2013		Levels 1-3 in 2013	
	Number Tested Both Years	Percentage Improved in 2014	Number Tested Both Years	Percentage Improved in 2014	Number Tested Both Years	Percentage Improved in 2014	Number Tested Both Years	Percentage Improved in 2014
5	2	*	0		0		2	*
6	14	50.0	23	52.2	0		37	51.4
7	11	18.2	20	50.0	0		31	38.7
8	18	22.2	13	30.8	0		31	25.8
9	42	50.0	17	35.3	0		59	45.8
10	12	33.3	15	40.0	0		27	37.0
11	3	*	14	35.7	0		17	41.2
12	2	*	10	40.0	0		12	33.3
ALL	104	38.5	112	42.0	0		216	40.3

PERFORMANCE IN 2014

Grade 2013-14 (N Rated)	Domain:	Listening		Speaking		Writing		Reading		Composite	
	2014 Level	N	%	N	%	N	%	N	%	N	%
KN (456)	Beginning	225	49.3	336	73.7	415	91.0	409	89.7	406	89.0
	Intermediate	163	35.7	80	17.5	34	7.5	25	5.5	28	6.1
	Advanced	55	12.1	33	7.2	6	1.3	19	4.2	21	4.6
	Advanced High	13	2.9	7	1.5	1	0.2	3	0.7	1	0.2
1 (442)	Beginning	202	45.7	245	55.4	319	72.2	283	64.0	273	61.8
	Intermediate	136	30.8	123	27.8	78	17.6	97	21.9	107	24.2
	Advanced	91	20.6	62	14.0	34	7.7	47	10.6	47	10.6
	Advanced High	13	2.9	12	2.7	11	2.5	15	3.4	15	3.4
2 (432)	Beginning	40	9.3	67	15.6	146	34.0	99	22.9	71	16.5
	Intermediate	163	37.8	162	37.7	178	41.4	191	44.2	206	47.9
	Advanced	149	34.6	142	33.0	89	20.7	116	26.9	128	29.8
	Advanced High	79	18.3	59	13.7	17	4.0	26	6.0	25	5.8
3 (421)	Beginning	11	2.6	21	5.0	39	9.3	64	15.2	26	6.2
	Intermediate	76	18.1	136	32.3	193	45.8	139	33.0	152	36.1
	Advanced	205	48.7	189	44.9	129	30.6	125	29.7	157	37.3
	Advanced High	129	30.6	75	17.8	60	14.3	93	22.1	86	20.4
4 (380)	Beginning	17	4.5	24	6.3	46	12.1	47	12.4	30	7.9
	Intermediate	48	12.6	108	28.4	118	31.1	145	38.2	117	30.8
	Advanced	179	47.1	153	40.3	141	37.1	136	35.8	165	43.4
	Advanced High	136	35.8	95	25.0	75	19.7	52	13.7	68	17.9

**PROGRESSION FROM
2013 TO 2014**

Number Rated Both Years N (%) Progressed	2014 Level	2013 Level			
		Beg	Int	Adv	Adv High
-	Beginning	-			
	Intermediate	-	-		
	Advanced	-	-	-	
	Advanced High	-	-	-	
426 146 (34.3%)	Beginning	262			
	Intermediate	90	15		
	Advanced	30	13	3	
	Advanced High	9	1	3	
415 271 (65.3%)	Beginning	63			
	Intermediate	150	51		
	Advanced	55	41	30	
	Advanced High	10	6	9	
397 142 (35.8%)	Beginning	16			
	Intermediate	24	120		
	Advanced	2	31	119	
	Advanced High	0	3	82	
351 95 (27.1%)	Beginning	17			
	Intermediate	13	102		
	Advanced	1	18	137	
	Advanced High	0	0	63	

PERFORMANCE IN 2014

Grade 2013-14 (N Rated)	Domain:	Listening		Speaking		Writing		Reading		Composite	
	2014 Level	N	%	N	%	N	%	N	%	N	%
5 (390)	Beginning	8	2.1	11	2.8	16	4.1	22	5.7	11	2.8
	Intermediate	24	6.2	68	17.5	125	32.1	78	20.1	66	17.1
	Advanced	140	35.9	148	38.0	143	36.8	160	41.1	165	42.6
	Advanced High	218	55.9	162	41.6	105	27.0	129	33.2	145	37.5
6 (370)	Beginning	2	0.6	6	1.7	14	4.0	37	10.1	8	2.3
	Intermediate	33	9.4	52	14.8	90	25.6	113	30.8	65	18.7
	Advanced	124	35.3	121	34.5	113	32.2	152	41.4	155	44.5
	Advanced High	192	54.7	172	49.0	134	38.2	65	17.7	120	34.5
7 (259)	Beginning	2	1.0	3	1.5	5	2.6	34	13.1	2	1.0
	Intermediate	20	10.2	19	9.7	50	25.5	95	36.7	46	23.5
	Advanced	84	42.9	73	37.2	94	48.0	96	37.1	105	53.6
	Advanced High	90	45.9	101	51.5	47	24.0	34	13.1	43	21.9
8 (236)	Beginning	2	0.9	4	1.8	4	1.8	25	10.7	3	1.4
	Intermediate	16	7.2	14	6.3	34	15.2	63	26.9	27	12.2
	Advanced	30	13.5	31	13.9	74	33.2	99	42.3	100	45.2
	Advanced High	175	78.5	174	78.0	111	49.8	47	20.1	91	41.2
9 (182)	Beginning	27	15.1	29	16.2	29	16.4	29	16.4	21	12.1
	Intermediate	10	5.6	16	8.9	44	24.9	50	28.2	31	17.8
	Advanced	35	19.6	48	26.8	62	35.0	66	37.3	74	42.5
	Advanced High	107	59.8	86	48.0	42	23.7	32	18.1	48	27.6

**PROGRESSION FROM
2013 TO 2014**

Number Rated Both Years N (%) Progressed	2014 Level	2013 Level			
		Beg	Int	Adv	Adv High
366 211 (57.7%)	Beginning	4			
	Intermediate	15	47		
	Advanced	1	52	104	
	Advanced High	0	7	136	
331 130 (39.3%)	Beginning	6			
	Intermediate	7	54		
	Advanced	2	6	141	
	Advanced High	0	0	115	
177 58 (32.8%)	Beginning	0			
	Intermediate	3	30		
	Advanced	0	13	89	
	Advanced High	0	0	42	
200 97 (48.5%)	Beginning	0			
	Intermediate	2	18		
	Advanced	0	7	85	
	Advanced High	0	0	88	
114 61 (53.5%)	Beginning	2			
	Intermediate	8	9		
	Advanced	2	9	42	
	Advanced High	0	1	41	

PERFORMANCE IN 2014

Grade 2013-14 (N Rated)	Domain:	Listening		Speaking		Writing		Reading		Composite	
	2014 Level	N	%	N	%	N	%	N	%	N	%
10 (111)	Beginning	5	4.5	5	4.5	5	4.5	12	10.9	5	4.6
	Intermediate	7	6.3	9	8.1	19	17.3	23	20.9	14	12.8
	Advanced	29	26.1	34	30.6	34	30.9	56	50.9	39	35.8
	Advanced High	70	63.1	63	56.8	52	47.3	19	17.3	51	46.8
11 (110)	Beginning	1	0.9	3	2.7	5	4.7	5	4.6	2	1.9
	Intermediate	15	13.6	15	13.6	29	27.1	9	8.3	10	9.3
	Advanced	40	36.4	45	40.9	53	49.5	63	57.8	62	57.9
	Advanced High	54	49.1	47	42.7	20	18.7	32	29.4	33	30.8
12 (44)	Beginning	0	0.0	0	0.0	0	0.0	2	4.7	0	0.0
	Intermediate	2	4.7	2	4.7	6	14.6	7	16.3	3	7.3
	Advanced	11	25.6	18	41.9	17	41.5	22	51.2	22	53.7
	Advanced High	30	69.8	23	53.5	18	43.9	12	27.9	16	39.0
ALL (3,833)	Beginning	542	14.5	754	20.2	1,043	28.0	1,068	28.0	858	23.1
	Intermediate	713	19.1	804	21.5	998	26.8	1,035	27.1	872	23.5
	Advanced	1,172	31.4	1,097	29.4	989	26.6	1,157	30.3	1,240	33.4
	Advanced High	1,306	35.0	1,076	28.8	693	18.6	559	14.6	742	20.0

**PROGRESSION FROM
2013 TO 2014**

Number Rated Both Years N (%) Progressed	2014 Level	2013 Level			
		Beg	Int	Adv	Adv High
99 50 (50.5%)	Beginning	5			
	Intermediate	3	11		
	Advanced	0	3	33	
	Advanced High	0	0	44	
98 33 (33.7%)	Beginning	2			
	Intermediate	2	7		
	Advanced	0	0	56	
	Advanced High	0	0	31	
39 17 (43.6%)	Beginning	0			
	Intermediate	0	3		
	Advanced	0	2	19	
	Advanced High	0	0	15	
3,021 1,311 (43.4%)	Beginning	384			
	Intermediate	317	468		
	Advanced	93	195	858	
	Advanced High	19	18	669	

■ Indicates students who progressed at least one level from 2013 to 2014.