

DATA PACKET

for 2014-15 planning

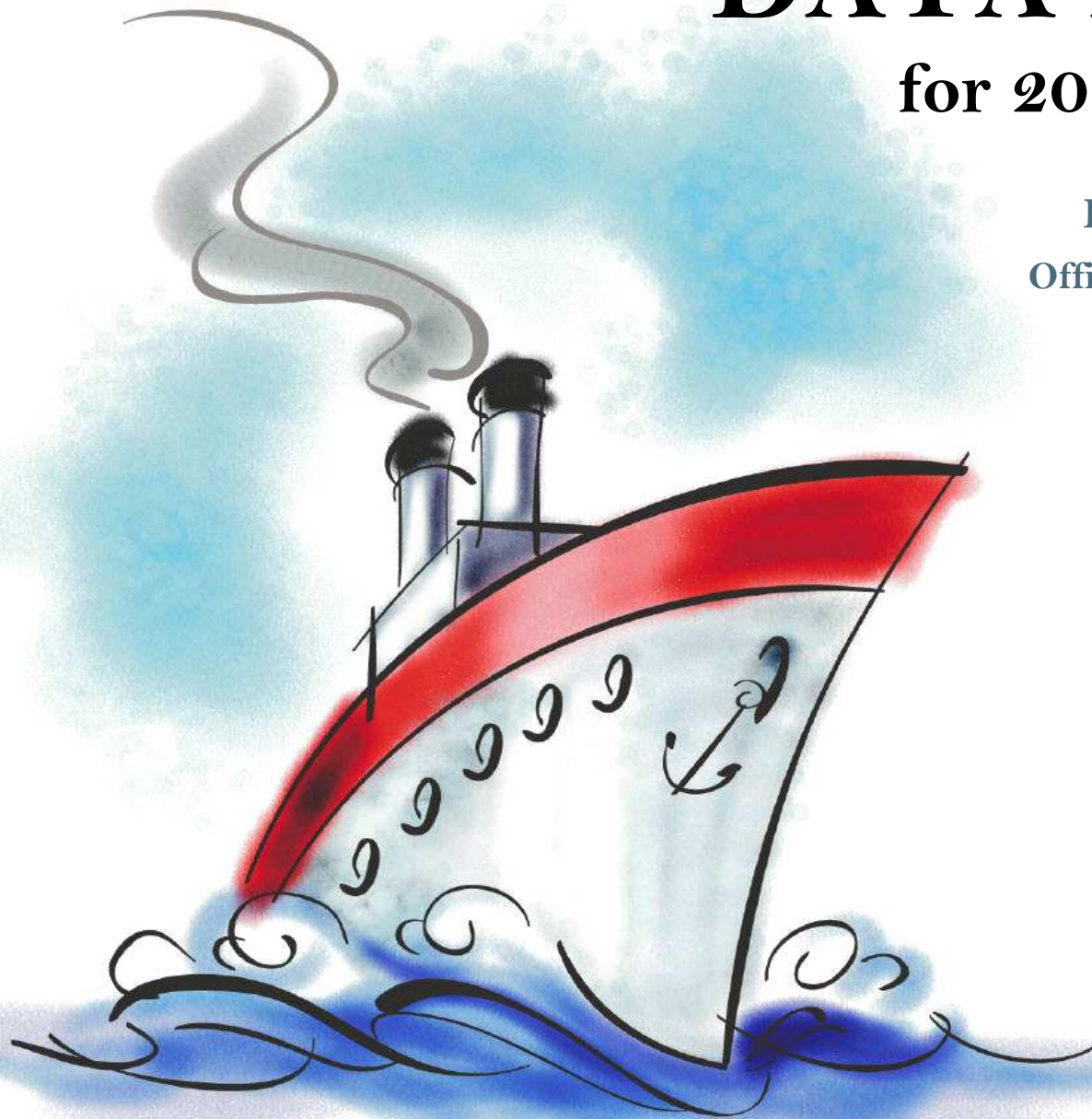
Evaluation & Assessment
Office of Institutional Research

<http://mydata.dallasisd.org>

OIR@dallasisd.org

September 8, 2014

**NORTH DALLAS
FEEDER GROUP**



Dallas Independent School District

2. Contents Table of Contents

STUDENTS AND STAFF

5. Summary Summary of Student and Teacher Statistics

9. Enroll (2) Enrollment Statistics by Select Student Group

15. Teachers Teacher Statistics

STAAR (English)

16. Reading (3-8) STAAR 3-8 Reading in English

28. Writing (3-8) STAAR 3-8 Writing in English

43. Math (EOC) STAAR EOC Mathematics

54. Science (EOC) ... STAAR EOC Science

62. SS (EOC) STAAR EOC Social Studies

STAAR (Spanish)

66. Reading (3-8) STAAR 3-8 Reading in Spanish

74. Math (3-8) STAAR 3-8 Mathematics in Spanish

STAAR L

82. Math (3-8) STAAR L 3-8 Mathematics

94. Science (3-8) STAAR L 3-8 Science

105. SS (3-8) STAAR L 3-8 Social Studies

STAAR M

109. Reading (3-8) STAAR M 3-8 Reading

121. Writing (3-8) STAAR M 3-8 Writing

136. Math (EOC) STAAR M EOC Mathematics

147. Science (EOC) ... STAAR M EOC Science

155. SS (EOC) STAAR M EOC Social Studies

ITBS/LOGRAMOS

159. Compliance SCE Compliance for At-Risk Students

162. Math ITBS Mathematics Subtests

ENGLISH PROFICIENCY

168. WMLS Woodcock-Muñoz Language Survey

3. Notes Notes and Data Descriptions

6. Enroll (1) Enrollment Statistics by Ethnicity

12. Attendance Student Attendance Statistics

24. Reading (EOC) .. STAAR EOC Reading

35. Math (3-8) STAAR 3-8 Mathematics in English

47. Science (3-8) STAAR 3-8 Science in English

58. SS (3-8) STAAR 3-8 Social Studies in English

70. Writing (3-8) STAAR 3-8 Writing in Spanish

78. Science (3-8) STAAR 3-8 Science in Spanish

90. Math (EOC) STAAR L EOC Mathematics

101. Science (EOC) ... STAAR L EOC Science

117. Reading (EOC) .. STAAR M EOC Reading

128. Math (3-8) STAAR M 3-8 Mathematics

140. Science (3-8) STAAR M 3-8 Science

151. SS (3-8) STAAR M 3-8 Social Studies

160. Reading ITBS Reading Subtests

166. Reading Logramos Reading Subtests

169. TELPAS Texas English Language Proficiency Assessment System

2013-14 SCHOOL SUMMARY

- Student percentages are computed as the percentage of total student enrollment.
- Additional statistics are available in ENROLLMENT and TEACHER reports.
- Race/ethnic categories are based on the newest federal standards for ethnicity and race reporting, though some categories have been combined because of small group sizes. Students reporting their ethnicity as “Hispanic” are not counted in any race category.
- “Economically disadvantaged” students are those who qualify for free or reduced-price lunch through the federal government's program.
- Teacher demographics and assignments are from the district's Public Education Information Management System (PEIMS) submission to the TEA.

ENROLLMENT

- Statistics are based on the school's enrollment at the end of the fifth six-weeks grading period.
- “Economically disadvantaged” students are those receiving free or reduced-price lunches.
- “New” students were new to the district in 2013-14. They are counted as new if not enrolled in a district campus before the last day of the 2012-13 school year.
- The “retention rate” is the percentage of students in the same grade at the end of the fifth six-weeks grading period for both 2012-13 and 2013-14.

ATTENDANCE

- Statistics are based on student attendance through the end of the sixth six-weeks grading period (the end of the school year).
- “Average daily membership” is the total number of school days students were ENROLLED divided by the number of school days in the year.
- The “average daily attendance” number (N) is the total number of school days students were IN ATTENDANCE divided by the number of school days in the year. The “average daily attendance” percentage (%) is the average attendance rate. For each student, the number of days attended is divided by the number of days enrolled. This rate is then averaged across students.
- The number (N) of “yearly transactions” is the total number of transfer and withdrawal transactions in the school year. The percentage (%) is the number of transactions divided by “average daily membership,” which gives (on average) the percentage of the membership associated with a transaction.
- “Continuously enrolled” students are enrolled and in attendance for a minimum number of instructional days in at least one course at the school between the beginning of the school year and the first day of the main STAAR testing period. The minimum number varies depending on the school year's calendar, but is typically around 130 days.
- The “stability rate” is the number of continuously enrolled students divided by “average daily membership.”

TEACHERS

- Teacher demographics and assignments are from the district's Public Education Information Management System (PEIMS) submission to the TEA.
- Teacher absences counted towards the average DO NOT include vacation days (coded as VAC in personnel database).
- Retention rate for a school year is computed with numerator “# of teachers assigned to the school both that year and the year prior” and denominator “# of teachers assigned to the school for the prior year.” That is, the retention rate is the percentage of the prior year's teachers who continued at the school.

STAAR, STAAR L, and STAAR M

- Cells marked with an asterisk (*) indicate five or fewer students were tested. Blank cells indicate no students were tested.
- Student group assignments are from the district's Public Education Information Management System (PEIMS) submission to the TEA.
- STAAR statistics are based on results from standard STAAR only. STAAR L and STAAR M statistics are computed separately, following TEA reporting practice.
- “Percentage Satisfactory” is the percentage of students achieving Level 2 (Satisfactory) or Level 3 (Advanced).
- Statistics by reporting category are averages for all students (across student groups and genders).
- An “average percentage correct” is computed as follows: for each student, divide the number of items correctly answered by the total number of items in the test section, then average the resulting percentages across all students. For short answers on EOC English tests, an “average rating” is presented; STAAR EOC short answers are rated on a scale of 0 to 3. For written compositions on writing tests, “average score points” is presented. Additional details provided in report footnotes.
- Reading and mathematics statistics for SSI grades 5 and 8 are based on scores cumulative through the second administration. EOC statistics are based on first administration scores from the fall and spring administrations.
- Beginning in 2014, EOC Reading and EOC Writing tests were replaced with EOC English tests.

SCE COMPLIANCE and ITBS / ITED / LOGRAMOS

- Cells marked with an asterisk (*) indicate five or fewer students were tested. Blank cells indicate no students were tested.
- Student group assignments are based on demographic data in the Dallas ISD student database.
- Kindergarten ITBS reading statistics are based on the Reading Profile Total summary score. All other grades' ITBS reading statistics, and Logramos reading statistics for all grades, are based on the Reading Total summary score. (Reading Total values not available with use of the ITBS form administered in kindergarten.) “Number tested” statistics include kindergarten.
- Kindergarten ITBS mathematics statistics are based on the Mathematics subtest score. All other grades' statistics are based on the Mathematics Total summary score. (Mathematics Total values not available with use of the ITBS form administered in kindergarten.) “Number tested” statistics include kindergarten.
- Mathematics Total summary scores are combinations of the Mathematics Concepts, Problems, and Computation subtest results. For schools that did not administer Mathematics Concepts or Mathematics Problems subtests, Mathematics Computation statistics are provided separately.

TELPAS

- Students are counted as having tested if any one of the four domains is rated. Because a TELPAS composite rating is not assigned to a student unless all four domains are rated, the number of TELPAS composite ratings may be smaller than the number tested.
- If a student's composite rating did not increase at least one level from 2013 to 2014, the TEA did not report the 2013 composite rating.
- If a student is rated as advanced high in 2014, the TEA does not differentiate between the advanced and advanced high levels from 2013.

STUDENT ENROLLMENT

Grade	Enrollment
PK	500
KN	609
1	650
2	603
3	688
4	540
5	563
6	512
7	556
8	553
9	342
10	342
11	251
12	264
ALL	6,973

STUDENT AND TEACHER RACE/ETHNICITY

Ethnicity/Race	Students		Teachers	
	Number	Percent	Number	Percent
Black/African American	1,350	19.4	122	25.2
American Indian/Alaska Native	31	0.4	*	*
Asian/Hawaiian/Pacific Islander	188	2.7	*	*
Hispanic	5,217	74.8	151	31.1
White	142	2.0	178	36.7
Multiple	42	0.6	8	1.6
Other* (teachers only)	—	—	26	5.4
Not reported (students only)	0	0.0	—	—

*For teachers, "Other" category includes American Indian/Alaska Native and Asian/Hawaiian/Pacific Islander.

SELECT STUDENT GROUP ENROLLMENT

Group	Number	Percent
At-Risk	5,485	78.7
Economically disadvantaged	6,395	91.7
Limited English proficient (LEP)	3,300	47.3
Special education	565	8.1
Talented and Gifted (TAG)	918	13.2

Grade	Year	Enrollment	African American		American Indian		Asian		Hispanic		White		Multiple category	
			N	%	N	%	N	%	N	%	N	%	N	%
PK	2012	600	90	15.0	1	0.2	13	2.2	471	78.5	18	3.0	3	0.5
	2013	529	76	14.4	3	0.6	11	2.1	430	81.3	4	0.8	2	0.4
	2014	500	94	18.8	5	1.0	10	2.0	380	76.0	9	1.8	2	0.4
KN	2012	742	120	16.2	3	0.4	11	1.5	582	78.4	18	2.4	7	0.9
	2013	720	145	20.1	1	0.1	21	2.9	518	71.9	21	2.9	8	1.1
	2014	609	123	20.2	4	0.7	16	2.6	451	74.1	11	1.8	3	0.5
1	2012	791	138	17.4	2	0.3	21	2.7	608	76.9	19	2.4	2	0.3
	2013	689	148	21.5	2	0.3	10	1.5	514	74.6	9	1.3	5	0.7
	2014	650	157	24.2	1	0.2	20	3.1	450	69.2	16	2.5	6	0.9
2	2012	673	106	15.8	3	0.4	13	1.9	529	78.6	14	2.1	7	1.0
	2013	733	140	19.1	1	0.1	14	1.9	557	76.0	17	2.3	3	0.4
	2014	603	131	21.7	3	0.5	7	1.2	446	74.0	9	1.5	7	1.2
3	2012	664	104	15.7	4	0.6	16	2.4	522	78.6	14	2.1	4	0.6
	2013	604	107	17.7	2	0.3	14	2.3	463	76.7	15	2.5	3	0.5
	2014	688	142	20.6	0	0.0	16	2.3	514	74.7	14	2.0	2	0.3
4	2012	642	116	18.1	2	0.3	16	2.5	494	76.9	9	1.4	4	0.6
	2013	606	102	16.8	5	0.8	14	2.3	473	78.1	10	1.7	2	0.3
	2014	540	96	17.8	3	0.6	12	2.2	416	77.0	10	1.9	3	0.6
5	2012	632	99	15.7	4	0.6	20	3.2	499	79.0	8	1.3	2	0.3
	2013	611	123	20.1	2	0.3	17	2.8	454	74.3	11	1.8	4	0.7
	2014	563	106	18.8	2	0.4	16	2.8	428	76.0	7	1.2	4	0.7
PK-5	2012	4,744	773	16.3	19	0.4	110	2.3	3,705	78.1	100	2.1	29	0.6
	2013	4,492	841	18.7	16	0.4	101	2.2	3,409	75.9	87	1.9	27	0.6
	2014	4,153	849	20.4	18	0.4	97	2.3	3,085	74.3	76	1.8	27	0.7

Grade	Year	Enrollment	African American		American Indian		Asian		Hispanic		White		Multiple category	
			N	%	N	%	N	%	N	%	N	%	N	%
6	2012	575	84	14.6	2	0.3	14	2.4	453	78.8	14	2.4	6	1.0
	2013	621	111	17.9	4	0.6	24	3.9	458	73.8	18	2.9	6	1.0
	2014	512	105	20.5	2	0.4	13	2.5	380	74.2	11	2.1	1	0.2
7	2012	620	110	17.7	3	0.5	19	3.1	473	76.3	11	1.8	2	0.3
	2013	561	92	16.4	1	0.2	14	2.5	431	76.8	15	2.7	5	0.9
	2014	556	108	19.4	5	0.9	20	3.6	400	71.9	17	3.1	5	0.9
8	2012	622	95	15.3	3	0.5	21	3.4	486	78.1	15	2.4	2	0.3
	2013	578	114	19.7	4	0.7	21	3.6	425	73.5	13	2.2	1	0.2
	2014	553	98	17.7	0	0.0	12	2.2	422	76.3	14	2.5	6	1.1
6-8	2012	1,817	289	15.9	8	0.4	54	3.0	1,412	77.7	40	2.2	10	0.6
	2013	1,760	317	18.0	9	0.5	59	3.4	1,314	74.7	46	2.6	12	0.7
	2014	1,621	311	19.2	7	0.4	45	2.8	1,202	74.2	42	2.6	12	0.7

Grade	Year	Enrollment	African American		American Indian		Asian		Hispanic		White		Multiple category	
			N	%	N	%	N	%	N	%	N	%	N	%
9	2012	363	59	16.3	2	0.6	16	4.4	279	76.9	6	1.7	1	0.3
	2013	400	63	15.8	2	0.5	15	3.8	311	77.8	6	1.5	3	0.8
	2014	342	66	19.3	1	0.3	10	2.9	257	75.1	8	2.3	0	0.0
10	2012	297	32	10.8	2	0.7	9	3.0	248	83.5	5	1.7	1	0.3
	2013	281	43	15.3	2	0.7	14	5.0	215	76.5	7	2.5	0	0.0
	2014	342	51	14.9	2	0.6	11	3.2	271	79.2	5	1.5	2	0.6
11	2012	314	39	12.4	3	1.0	16	5.1	248	79.0	8	2.5	0	0.0
	2013	275	29	10.5	4	1.5	10	3.6	226	82.2	4	1.5	2	0.7
	2014	251	39	15.5	1	0.4	15	6.0	191	76.1	5	2.0	0	0.0
12	2012	274	35	12.8	1	0.4	12	4.4	222	81.0	4	1.5	0	0.0
	2013	310	43	13.9	2	0.6	13	4.2	247	79.7	5	1.6	0	0.0
	2014	264	34	12.9	2	0.8	10	3.8	211	79.9	6	2.3	1	0.4
9-12	2012	1,248	165	13.2	8	0.6	53	4.2	997	79.9	23	1.8	2	0.2
	2013	1,266	178	14.1	10	0.8	52	4.1	999	78.9	22	1.7	5	0.4
	2014	1,199	190	15.8	6	0.5	46	3.8	930	77.6	24	2.0	3	0.3
ALL	2012	7,809	1,227	15.7	35	0.4	217	2.8	6,114	78.3	163	2.1	41	0.5
	2013	7,518	1,336	17.8	35	0.5	212	2.8	5,722	76.1	155	2.1	44	0.6
	2014	6,973	1,350	19.4	31	0.4	188	2.7	5,217	74.8	142	2.0	42	0.6

Grade	Year	Enrollment	Economically Disadvantaged		LEP		Special Education		At Risk		TAG		New (to District)		Gender		Retention Rate (%)
			N	%	N	%	N	%	N	%	N	%	N	%	% Male	% Female	
PK	2012	600	573	95.5	365	60.8	21	3.5	363	60.5	0	0.0	578	96.3	51.7	48.3	2.7
	2013	529	509	96.2	335	63.3	17	3.2	344	65.0	0	0.0	509	96.2	49.3	50.7	1.9
	2014	500	469	93.8	298	59.6	20	4.0	309	61.8	0	0.0	487	97.4	48.0	52.0	1.6
KN	2012	742	716	96.5	417	56.2	34	4.6	440	59.3	48	6.5	298	40.2	51.5	48.5	0.5
	2013	720	686	95.3	391	54.3	43	6.0	410	56.9	24	3.3	248	34.4	52.5	47.5	1.3
	2014	609	572	93.9	319	52.4	36	5.9	346	56.8	20	3.3	176	28.9	53.0	47.0	0.3
1	2012	791	768	97.1	474	59.9	49	6.2	532	67.3	97	12.3	81	10.2	49.3	50.7	5.7
	2013	689	673	97.7	381	55.3	41	6.0	423	61.4	84	12.2	51	7.4	54.0	46.0	4.1
	2014	650	620	95.4	342	52.6	48	7.4	381	58.6	47	7.2	56	8.6	52.0	48.0	4.3
2	2012	673	654	97.2	403	59.9	50	7.4	554	82.3	103	15.3	60	8.9	54.1	45.9	4.5
	2013	733	713	97.3	434	59.2	50	6.8	593	80.9	103	14.1	49	6.7	50.2	49.8	4.0
	2014	603	577	95.7	328	54.4	39	6.5	483	80.1	82	13.6	35	5.8	51.2	48.8	3.2
3	2012	664	643	96.8	413	62.2	52	7.8	572	86.1	112	16.9	70	10.5	52.3	47.7	2.6
	2013	604	587	97.2	361	59.8	52	8.6	522	86.4	105	17.4	44	7.3	51.5	48.5	2.0
	2014	688	650	94.5	397	57.7	55	8.0	590	85.8	110	16.0	48	7.0	50.1	49.9	2.8
4	2012	642	627	97.7	371	57.8	66	10.3	565	88.0	121	18.8	55	8.6	53.0	47.0	1.1
	2013	606	591	97.5	375	61.9	52	8.6	523	86.3	96	15.8	52	8.6	52.3	47.7	0.7
	2014	540	516	95.6	313	58.0	60	11.1	476	88.1	101	18.7	39	7.2	48.3	51.7	2.0
5	2012	632	615	97.3	362	57.3	73	11.6	539	85.3	143	22.6	42	6.6	46.4	53.6	2.1
	2013	611	598	97.9	346	56.6	67	11.0	522	85.4	126	20.6	40	6.5	53.7	46.3	0.8
	2014	563	536	95.2	322	57.2	54	9.6	507	90.1	102	18.1	32	5.7	51.0	49.0	2.5
PK-5	2012	4,744	4,596	96.9	2,805	59.1	345	7.3	3,565	75.1	624	13.2	1,184	25.0	51.1	48.9	2.8
	2013	4,492	4,357	97.0	2,623	58.4	322	7.2	3,337	74.3	538	12.0	993	22.1	52.0	48.0	2.2
	2014	4,153	3,940	94.9	2,319	55.8	312	7.5	3,092	74.5	462	11.1	873	21.0	50.6	49.4	2.4

Grade	Year	Enrollment	Economically Disadvantaged		LEP		Special Education		At Risk		TAG		New (to District)		Gender		Retention Rate (%)
			N	%	N	%	N	%	N	%	N	%	N	%	% Male	% Female	
6	2012	575	536	93.2	312	54.3	48	8.3	427	74.3	145	25.2	56	9.7	48.0	52.0	0.7
	2013	621	590	95.0	261	42.0	51	8.2	497	80.0	140	22.5	44	7.1	51.4	48.6	1.1
	2014	512	466	91.0	249	48.6	38	7.4	443	86.5	117	22.9	29	5.7	54.9	45.1	1.2
7	2012	620	550	88.7	193	31.1	61	9.8	392	63.2	126	20.3	62	10.0	53.5	46.5	4.2
	2013	561	517	92.2	234	41.7	38	6.8	426	75.9	127	22.6	46	8.2	48.0	52.0	1.4
	2014	556	494	88.8	223	40.1	46	8.3	467	84.0	106	19.1	34	6.1	51.6	48.4	0.9
8	2012	622	553	88.9	158	25.4	44	7.1	419	67.4	88	14.1	59	9.5	50.6	49.4	4.2
	2013	578	517	89.4	160	27.7	49	8.5	388	67.1	119	20.6	39	6.7	54.0	46.0	0.5
	2014	553	479	86.6	191	34.5	40	7.2	456	82.5	105	19.0	43	7.8	47.4	52.6	1.3
6-8	2012	1,817	1,639	90.2	663	36.5	153	8.4	1,238	68.1	359	19.8	177	9.7	50.8	49.2	3.1
	2013	1,760	1,624	92.3	655	37.2	138	7.8	1,311	74.5	386	21.9	129	7.3	51.1	48.9	1.0
	2014	1,621	1,439	88.8	663	40.9	124	7.6	1,366	84.3	328	20.2	106	6.5	51.2	48.8	1.1

Grade	Year	Enrollment	Economically Disadvantaged		LEP		Special Education		At Risk		TAG		New (to District)		Gender		Retention Rate (%)
			N	%	N	%	N	%	N	%	N	%	N	%	% Male	% Female	
9	2012	363	338	93.1	118	32.5	33	9.1	284	78.2	20	5.5	61	16.8	53.4	46.6	7.2
	2013	400	365	91.3	112	28.0	38	9.5	308	77.0	30	7.5	44	11.0	50.8	49.3	6.3
	2014	342	293	85.7	105	30.7	40	11.7	291	85.1	43	12.6	47	13.7	56.7	43.3	3.5
10	2012	297	256	86.2	97	32.7	38	12.8	232	78.1	22	7.4	25	8.4	50.5	49.5	2.4
	2013	281	258	91.8	78	27.8	25	8.9	220	78.3	16	5.7	24	8.5	49.8	50.2	1.8
	2014	342	291	85.1	93	27.2	31	9.1	296	86.5	39	11.4	10	2.9	48.8	51.2	3.8
11	2012	314	260	82.8	87	27.7	29	9.2	249	79.3	31	9.9	24	7.6	47.8	52.2	1.6
	2013	275	234	85.1	58	21.1	30	10.9	225	81.8	21	7.6	13	4.7	54.2	45.8	1.8
	2014	251	216	86.1	65	25.9	20	8.0	214	85.3	21	8.4	16	6.4	47.0	53.0	2.8
12	2012	274	226	82.5	64	23.4	28	10.2	223	81.4	20	7.3	12	4.4	52.6	47.4	3.6
	2013	310	266	85.8	84	27.1	32	10.3	254	81.9	27	8.7	11	3.5	48.4	51.6	6.5
	2014	264	216	81.8	55	20.8	38	14.4	226	85.6	25	9.5	10	3.8	51.9	48.1	8.7
9-12	2012	1,248	1,080	86.5	366	29.3	128	10.3	988	79.2	93	7.5	122	9.8	51.1	48.9	3.8
	2013	1,266	1,123	88.7	332	26.2	125	9.9	1,007	79.5	94	7.4	92	7.3	50.7	49.3	4.3
	2014	1,199	1,016	84.7	318	26.5	129	10.8	1,027	85.7	128	10.7	83	6.9	51.4	48.6	4.6
ALL	2012	7,809	7,315	93.7	3,834	49.1	626	8.0	5,791	74.2	1,076	13.8	1,483	19.0	51.1	48.9	3.0
	2013	7,518	7,104	94.5	3,610	48.0	585	7.8	5,655	75.2	1,018	13.5	1,214	16.1	51.6	48.4	2.3
	2014	6,973	6,395	91.7	3,300	47.3	565	8.1	5,485	78.7	918	13.2	1,062	15.2	50.9	49.1	2.5

Grade	Year	Average Daily Membership		Average Daily Attendance				Yearly Transactions			Continuously Enrolled		Stability Rate	
		N	District	N	%	District N	District %	N	%	District %	N	District	%	District
KN	2012	744	13,633	713	95.9	13,086	96.0	126	16.9	19.9	623	11,731	83.7	86.0
	2013	715	14,067	680	95.2	13,411	95.3	174	24.3	20.0	609	12,178	85.2	86.6
	2014	610	13,618	587	96.2	13,058	95.9	135	22.1	19.8	522	11,271	85.6	82.8
1	2012	792	14,026	764	96.5	13,533	96.5	139	17.5	18.3	694	12,292	87.6	87.6
	2013	685	14,140	656	95.7	13,578	96.0	139	20.3	18.7	595	12,528	86.9	88.6
	2014	653	14,262	628	96.1	13,732	96.3	151	23.1	19.2	554	12,149	84.9	85.2
2	2012	671	13,338	652	97.2	12,932	97.0	93	13.9	16.8	602	11,883	89.8	89.1
	2013	738	13,555	712	96.4	13,077	96.5	117	15.8	17.1	677	12,206	91.7	90.0
	2014	602	13,652	583	96.8	13,209	96.8	102	16.9	17.0	525	11,868	87.2	86.9
3	2012	655	12,874	637	97.3	12,508	97.2	112	17.1	15.5	591	11,592	90.2	90.0
	2013	597	12,879	577	96.7	12,466	96.8	116	19.4	15.9	536	11,710	89.8	90.9
	2014	690	13,159	671	97.2	12,763	97.0	126	18.3	17.3	617	11,491	89.4	87.3
4	2012	642	12,493	624	97.2	12,139	97.2	104	16.2	16.6	572	11,218	89.1	89.8
	2013	613	12,406	594	96.9	12,029	97.0	105	17.1	16.5	562	11,339	91.7	91.4
	2014	538	12,543	522	97.0	12,180	97.1	101	18.8	16.3	483	11,075	89.8	88.3
5	2012	633	12,562	617	97.4	12,220	97.3	25	3.9	5.3	578	11,364	91.3	90.5
	2013	610	12,053	592	97.0	11,696	97.0	31	5.1	6.2	559	11,075	91.6	91.9
	2014	565	12,130	548	97.0	11,795	97.2	46	8.1	5.4	489	10,790	86.6	89.0
KN-5	2012	4,137	78,926	4,008	96.9	76,419	96.8	599	14.5	15.5	3,660	70,080	88.5	88.8
	2013	3,958	79,100	3,811	96.3	76,255	96.4	682	17.2	16.0	3,538	71,036	89.4	89.8
	2014	3,658	79,365	3,538	96.7	76,736	96.7	661	18.1	16.0	3,190	68,644	87.2	86.5

Grade	Year	Average Daily Membership		Average Daily Attendance				Yearly Transactions			Continuously Enrolled		Stability Rate	
		N	District	N	%	District N	District %	N	%	District %	N	District	%	District
6	2012	579	10,683	561	96.8	10,315	96.6	109	18.8	17.6	510	9,420	88.0	88.2
	2013	625	11,463	603	96.5	11,062	96.5	126	20.2	21.1	559	10,320	89.5	90.0
	2014	521	10,808	502	96.3	10,413	96.3	97	18.6	20.0	474	9,554	90.9	88.4
7	2012	628	10,204	600	95.6	9,727	95.3	151	24.1	23.8	532	8,576	84.7	84.0
	2013	566	10,542	544	96.0	10,116	96.0	120	21.2	24.5	509	9,357	89.9	88.8
	2014	560	11,195	534	95.4	10,729	95.8	121	21.6	22.1	489	9,852	87.3	88.0
8	2012	603	10,369	577	95.7	9,838	94.9	63	10.4	15.5	530	8,711	87.9	84.0
	2013	583	9,955	559	96.0	9,486	95.3	63	10.8	17.6	523	8,664	89.8	87.0
	2014	548	10,449	525	95.9	9,970	95.4	63	11.5	13.1	490	9,097	89.4	87.1
6-8	2012	1,810	31,256	1,738	96.0	29,880	95.6	323	17.8	18.9	1,572	26,707	86.8	85.4
	2013	1,774	31,960	1,706	96.2	30,665	96.0	309	17.4	21.1	1,591	28,341	89.7	88.7
	2014	1,630	32,451	1,562	95.8	31,112	95.9	281	17.2	18.5	1,453	28,503	89.2	87.8

Grade	Year	Average Daily Membership		Average Daily Attendance				Yearly Transactions			Continuously Enrolled		Stability Rate	
		N	District	N	%	District N	District %	N	%	District %	N	District	%	District
9	2012	364	10,922	340	93.5	10,196	93.3	92	25.3	27.8	289	8,726	79.5	79.9
	2013	411	11,153	389	94.5	10,499	94.1	90	21.9	28.3	345	9,388	83.9	84.2
	2014	351	10,850	328	93.4	10,242	94.4	93	26.5	28.4	279	9,091	79.6	83.8
10	2012	306	9,007	288	93.9	8,431	93.6	58	18.9	20.6	251	7,332	81.9	81.4
	2013	282	9,331	265	94.0	8,812	94.4	56	19.9	20.5	243	8,042	86.3	86.2
	2014	350	9,898	331	94.6	9,367	94.6	56	16.0	20.3	307	8,628	87.7	87.2
11	2012	321	8,913	298	92.8	8,306	93.2	47	14.6	15.9	261	7,319	81.3	82.1
	2013	289	8,457	270	93.5	7,949	94.0	29	10.0	18.9	244	7,295	84.4	86.3
	2014	264	8,467	248	93.9	8,005	94.5	37	14.0	18.1	231	7,476	87.4	88.3
12	2012	287	8,178	249	87.0	7,571	92.6	43	15.0	12.6	189	6,742	65.9	82.4
	2013	316	8,199	292	92.6	7,661	93.4	21	6.6	14.9	278	7,269	88.0	88.7
	2014	262	7,886	244	93.2	7,407	93.9	27	10.3	15.2	215	7,027	82.1	89.1
9-12	2012	1,278	37,021	1,175	92.0	34,504	93.2	240	18.8	19.8	990	30,119	77.5	81.4
	2013	1,298	37,140	1,216	93.7	34,922	94.0	196	15.1	21.2	1,110	31,994	85.5	86.1
	2014	1,227	37,101	1,151	93.8	35,021	94.4	213	17.4	21.1	1,032	32,222	84.1	86.8

Teachers: 485

DISTRIBUTIONS

Ethnicity/Race	Number	Percentage
African American	122	25.2
Hispanic	151	31.1
White	178	36.7
Multiple	8	1.6
Other	26	5.4

Gender	Number	Percentage
Female	341	70.3
Male	144	29.7

ATTENDANCE / RETENTION

	Average Absences	Retention Rate
2011-12	6.2	—
2012-13	7.2	71.6
2013-14	7.8	73.0

YEARS EXPERIENCE

Years	Number	Percentage
Beginning (0)	48	9.9
1	36	7.4
2	17	3.5
3	25	5.2
4	26	5.4
5	30	6.2
1-3	78	16.1
More than 3	359	74.0
1 - 5	134	27.6
6 - 10	99	20.4
11 - 20	131	27.0
More than 20	73	15.1

PERCENTAGE SATISFACTORY (Levels 2 or 3)

Grade	Year	White	African Amer	Hispanic	Econ Disadv	Special Educ	LEP	At Risk	Migrant	Male	Female	All	District	Number Tested (All Students)
3	2012	81.8	66.7	60.4	60.6	50.0	50.7	51.6		58.1	67.7	62.6	63.6	281
	2013	76.9	71.3	69.6	69.5	41.7	62.9	55.8		69.9	68.8	69.3	67.8	261
	2014	46.2	56.1	59.6	58.3	33.3	52.2	46.1		53.5	62.5	58.1	61.7	315
4	2012	62.5	54.4	58.8	57.2	17.6	55.4	44.1		57.5	59.2	58.3	64.3	336
	2013	78.6	53.7	58.3	57.5	23.1	55.6	49.5		58.5	58.8	58.7	62.3	283
	2014	62.5	47.6	55.7	51.9	53.3	58.2	42.9		48.8	55.9	52.5	59.4	259
5	2012	83.3	63.2	67.1	65.9	33.3	70.7	55.4		62.4	69.7	66.4	68.0	360
	2013	81.8	73.8	77.5	76.4	35.3	76.0	69.1		76.2	78.0	76.9	81.5	359
	2014	75.0	66.0	77.1	72.8	69.2	75.7	64.9		75.0	72.2	73.6	78.5	280
3-5	2012	76.0	61.2	62.6	61.4	32.7	61.3	50.7		59.4	65.6	62.5	65.5	977
	2013	78.9	66.6	69.6	68.5	33.3	68.0	60.3		68.8	69.4	69.0	71.1	903
	2014	58.6	56.8	64.3	61.0	51.2	63.7	51.6		59.2	63.6	61.5	66.7	854

NUMBER TESTED IN GRADES 3-5													
2012	25	286	601	922	55	292	598		480	497	977	22,173	
2013	38	299	503	853	42	219	473		464	438	903	21,619	
2014	29	310	457	790	43	171	560		414	440	854	21,304	

PERCENTAGE SATISFACTORY (Levels 2 or 3)

Grade	Year	White	African Amer	Hispanic	Econ Disadv	Special Educ	LEP	At Risk	Migrant	Male	Female	All	District	Number Tested (All Students)
6	2012	71.4	56.4	63.5	61.7	40.0	54.7	52.3		61.6	64.3	63.1	63.5	547
	2013	93.3	55.3	53.7	54.5	8.3	44.0	38.8		59.6	52.9	56.2	57.7	585
	2014	90.9	61.5	62.1	61.1	50.0	53.5	51.7		59.8	65.6	62.5	63.1	480
7	2012	91.7	61.9	68.9	67.4	26.1	51.9	54.8		66.2	71.3	68.6	67.5	590
	2013	86.7	58.3	66.4	64.7	30.0	51.1	50.0		65.5	66.9	66.2	67.3	533
	2014	85.7	57.3	50.0	51.1	44.4	33.3	39.2		54.7	54.4	54.6	60.5	515
8	2012	86.7	75.6	73.8	74.4	38.5	46.9	61.5		73.7	75.8	74.7	71.3	590
	2013	92.9	77.6	81.6	81.4	53.8	64.0	71.9		80.0	82.8	81.3	82.7	557
	2014	100.0	74.2	79.9	78.4	53.8	65.5	70.9	*	75.0	83.1	79.4	81.5	528
6-8	2012	82.9	64.5	68.8	67.8	33.3	52.1	56.1		67.4	70.4	69.0	67.4	1,727
	2013	90.9	64.3	67.0	66.4	31.4	51.1	53.1		68.5	67.0	67.8	68.6	1,675
	2014	92.1	64.2	64.4	63.8	50.0	50.2	53.6	*	63.0	68.3	65.7	68.2	1,523

NUMBER TESTED IN GRADES 6-8													
2012	41	265	1,345	1,530	51	622	1,029			854	873	1,727	29,211
2013	44	294	1,254	1,525	35	652	969			836	839	1,675	29,692
2014	38	285	1,127	1,355	30	600	1,045	1		759	764	1,523	30,015

NUMBER UNSATISFACTORY (Level 1)

Grade	Year	White	African Amer	Hispanic	Econ Disadv	Special Educ	LEP	At Risk	Migrant	Male	Female	All	District	Number Tested (All Students)
3	2012	2	32	61	104	7	33	90		62	43	105	2,466	281
	2013	3	29	38	75	7	13	72		41	39	80	2,181	261
	2014	7	58	61	123	10	22	111		72	60	132	2,649	315
4	2012	3	47	84	136	14	41	105		71	69	140	2,529	336
	2013	3	44	65	114	10	28	52		61	56	117	2,581	283
	2014	3	44	66	116	7	23	93		63	60	123	2,858	259
5	2012	1	32	80	116	16	39	100		62	59	121	2,665	360
	2013	2	27	50	80	11	29	64		43	39	83	1,484	359
	2014	2	32	36	69	4	17	67		34	40	74	1,582	280
3-5	2012	6	111	225	356	37	113	295		195	171	366	7,660	977
	2013	8	100	153	269	28	70	188		145	134	280	6,246	903
	2014	12	134	163	308	21	62	271		169	160	329	7,089	854

NUMBER TESTED IN GRADES 3-5													
2012	25	286	601	922	55	292	598		480	497	977	22,173	
2013	38	299	503	853	42	219	473		464	438	903	21,619	
2014	29	310	457	790	43	171	560		414	440	854	21,304	

NUMBER UNSATISFACTORY (Level 1)

Grade	Year	White	African Amer	Hispanic	Econ Disadv	Special Educ	LEP	At Risk	Migrant	Male	Female	All	District	Number Tested (All Students)
6	2012	4	34	158	194	9	134	174		96	106	202	3,673	547
	2013	1	46	200	250	11	153	208		118	138	256	4,523	585
	2014	1	37	134	167	4	106	167		104	76	180	3,679	480
7	2012	1	40	140	168	17	87	151		105	80	185	3,070	590
	2013	2	35	139	172	7	112	158		86	94	180	3,215	533
	2014	2	41	187	222	5	134	220		116	118	234	4,075	515
8	2012	2	20	121	130	8	77	127		77	72	149	2,786	590
	2013	1	24	75	91	6	54	88		59	45	104	1,586	557
	2014	0	24	80	102	6	59	98	*	61	48	109	1,797	528
6-8	2012	7	94	419	492	34	298	452		278	258	536	9,529	1,727
	2013	4	105	414	513	24	319	454		263	277	540	9,324	1,675
	2014	3	102	401	491	15	299	485	*	281	242	523	9,551	1,523

NUMBER TESTED IN GRADES 6-8													
2012	41	265	1,345	1,530	51	622	1,029			854	873	1,727	29,211
2013	44	294	1,254	1,525	35	652	969			836	839	1,675	29,692
2014	38	285	1,127	1,355	30	600	1,045	1		759	764	1,523	30,015

PERCENTAGE ADVANCED (Level 3)

Grade	Year	White	African Amer	Hispanic	Econ Disadv	Special Educ	LEP	At Risk	Migrant	Male	Female	All	District	Number Tested (All Students)
3	2012	9.1	10.4	9.1	9.1	0.0	7.5	4.8		9.5	10.5	10.0	12.6	281
	2013	38.5	9.9	11.2	11.8	0.0	14.3	3.7		11.8	12.8	12.3	13.6	261
	2014	7.7	5.3	6.0	6.4	0.0	6.5	2.9		3.2	10.0	6.7	9.6	315
4	2012	12.5	2.9	10.8	6.9	5.9	6.5	4.8		10.2	5.9	8.0	11.2	336
	2013	21.4	10.5	12.8	13.1	7.7	7.9	6.8		14.3	12.5	13.4	13.5	283
	2014	37.5	6.0	11.4	10.4	6.7	14.5	6.7		10.6	11.8	11.2	12.0	259
5	2012	0.0	8.0	3.3	3.5	0.0	3.0	2.7		2.4	6.7	4.7	11.1	360
	2013	9.1	6.8	10.4	8.8	5.9	8.3	5.8		10.5	10.2	10.3	13.3	359
	2014	25.0	9.6	8.9	8.7	0.0	7.1	4.7		9.6	10.4	10.0	11.5	280
3-5	2012	8.0	7.0	7.3	6.3	1.8	5.1	4.0		7.3	7.4	7.4	11.6	977
	2013	23.7	9.0	11.3	11.0	4.8	9.1	5.3		12.1	11.6	11.8	13.5	903
	2014	20.7	6.8	8.8	8.4	2.3	9.4	4.6		7.5	10.7	9.1	11.1	854

NUMBER TESTED IN GRADE 3-5													
2012	25	286	601	922	55	292	598		480	497	977	22,173	
2013	38	299	503	853	42	219	473		464	438	903	21,619	
2014	29	310	457	790	43	171	560		414	440	854	21,304	

PERCENTAGE ADVANCED (Level 3)

Grade	Year	White	African Amer	Hispanic	Econ Disadv	Special Educ	LEP	At Risk	Migrant	Male	Female	All	District	Number Tested (All Students)
6	2012	35.7	11.5	7.6	7.9	6.7	2.4	2.2		7.2	11.4	9.5	8.3	547
	2013	46.7	10.7	9.5	9.6	0.0	4.4	2.6		11.3	10.9	11.1	11.3	585
	2014	36.4	8.3	8.2	7.9	0.0	2.6	2.3		8.1	9.5	8.8	7.1	480
7	2012	41.7	18.1	9.6	10.7	4.3	2.8	4.5		12.5	12.9	12.7	10.3	590
	2013	33.3	6.0	10.4	8.8	0.0	2.6	1.9		10.4	11.3	10.9	8.7	533
	2014	50.0	7.3	6.7	7.3	0.0	0.5	0.6		9.4	7.3	8.3	10.0	515
8	2012	46.7	9.8	9.5	8.7	7.7	0.7	2.7		12.3	8.8	10.5	9.9	590
	2013	42.9	14.0	14.7	14.5	7.7	1.3	4.2		14.2	17.9	16.0	15.5	557
	2014	61.5	16.1	13.3	13.3	0.0	1.2	4.7	*	11.9	19.0	15.7	13.1	528
6-8	2012	41.5	13.6	8.9	9.1	5.9	2.1	3.1		10.9	11.0	10.9	9.5	1,727
	2013	40.9	10.5	11.5	11.0	2.9	3.1	2.9		12.1	13.2	12.7	11.7	1,675
	2014	50.0	10.5	9.5	9.6	0.0	1.5	2.5	*	9.7	12.3	11.0	10.1	1,523

NUMBER TESTED IN GRADE 6-8													
2012	41	265	1,345	1,530	51	622	1,029			854	873	1,727	29,211
2013	44	294	1,254	1,525	35	652	969			836	839	1,675	29,692
2014	38	285	1,127	1,355	30	600	1,045	1		759	764	1,523	30,015

AVERAGE PERCENTAGE OF ITEMS CORRECT BY REPORTING CATEGORY

Grade	Year	REPORTING CATEGORY		
		1. Understanding Across Genres (GR 3-5) 1. Understanding/Analysis Across Genres (GR 6-8)	2. Understanding/Analysis of Literary Texts	3. Understanding/Analysis of Informational Texts
3	2012	60.6	52.4	59.3
	2013	60.3	57.8	58.8
	2014	61.3	57.8	51.8
4	2012	58.5	57.6	54.2
	2013	65.6	58.6	57.0
	2014	55.2	55.3	53.7
5	2012	61.8	53.9	64.6
	2013	63.7	64.8	64.6
	2014	65.3	61.9	62.8
3-5	2012	60.3	54.7	59.5
	2013	63.3	60.9	60.5
	2014	60.7	58.4	56.0

AVERAGE PERCENTAGE OF ITEMS CORRECT BY REPORTING CATEGORY

Grade	Year	REPORTING CATEGORY		
		1. Understanding Across Genres (GR 3-5) 1. Understanding/Analysis Across Genres (GR 6-8)	2. Understanding/Analysis of Literary Texts	3. Understanding/Analysis of Informational Texts
6	2012	68.0	62.3	57.0
	2013	60.3	59.6	57.3
	2014	61.1	56.9	59.2
7	2012	68.4	60.0	61.9
	2013	59.6	57.8	65.6
	2014	59.0	54.9	53.0
8	2012	66.6	60.8	64.0
	2013	68.3	68.3	62.1
	2014	66.8	64.3	62.8
6-8	2012	67.7	61.0	61.1
	2013	62.7	61.9	61.5
	2014	62.3	58.8	58.3

PERCENTAGE SATISFACTORY (Levels 2 and 3)

Test	Year	White	African Amer	Hispanic	Econ Disadv	Special Educ	LEP	At Risk	Migrant	Male	Female	All	District
ENGLISH I	2012												
	2013												
	2014	37.5	38.5	38.5	38.3	8.6	18.6	31.6		34.4	45.9	39.6	50.9
Tests Taken	2012												
	2013												
	2014	8	91	382	423	35	172	399		276	222	498	13,789
ENGLISH II	2012												
	2013												
	2014	*	41.9	49.5	48.1	13.3	27.7	39.4		38.8	58.7	49.3	54.8
Tests Taken	2012												
	2013												
	2014	3	62	299	322	15	101	282		178	201	379	10,943

NUMBER UNSATISFACTORY (Level 1)

Test	Year	White	African Amer	Hispanic	Econ Disadv	Special Educ	LEP	At Risk	Migrant	Male	Female	All	District
ENGLISH I	2012												
	2013												
	2014	5	56	235	261	32	140	273		181	120	301	6,774
Tests Taken	2012												
	2013												
	2014	8	91	382	423	35	172	399		276	222	498	13,789
ENGLISH II	2012												
	2013												
	2014	*	36	151	167	13	73	171		109	83	192	4,948
Tests Taken	2012												
	2013												
	2014	3	62	299	322	15	101	282		178	201	379	10,943

PERCENTAGE ADVANCED (Level 3)

Test	Year	White	African Amer	Hispanic	Econ Disadv	Special Educ	LEP	At Risk	Migrant	Male	Female	All	District
ENGLISH I	2012												
	2013												
	2014	12.5	0.0	0.5	1.2	0.0	0.0	0.3		1.1	0.9	1.0	3.2
Tests Taken	2012												
	2013												
	2014	8	91	382	423	35	172	399		276	222	498	13,789
ENGLISH II	2012												
	2013												
	2014	*	1.6	0.0	0.0	0.0	0.0	0.0		0.0	1.0	0.5	2.7
Tests Taken	2012												
	2013												
	2014	3	62	299	322	15	101	282		178	201	379	10,943

AVERAGE PERCENTAGE OF ITEMS CORRECT BY REPORTING CATEGORY

ENGLISH I	1. Understanding & Analysis Across Genres	1. Average Rating Short Answer #1 ¹	1. Average Rating Short Answer #2 ¹	2. Understanding & Analysis of Literary Texts	3. Understanding & Analysis of Informational Texts	4. Expository Composition ²	5. Revision	6. Editing
2012								
2013								
2014	59.1	1.0	1.1	50.1	52.8	3.8	60.0	48.8

ENGLISH II	1. Understanding & Analysis Across Genres	1. Average Rating Short Answer #1 ¹	1. Average Rating Short Answer #2 ¹	2. Understanding & Analysis of Literary Texts	3. Understanding & Analysis of Informational Texts	4. Persuasive Composition ²	5. Revision	6. Editing
2012								
2013								
2014	72.4	1.0	1.3	49.3	60.7	4.1	60.7	64.4

¹Short answer rating scale: 0=Insufficient; 1=Partially Sufficient; 2=Sufficient; 3=Exemplary

²Average score points (0-8). A composition is rated twice on a scale of 1 to 4, and the ratings are summed to determine score points for the composition. Score point scale: 0=Nonscorable; 2=Very Limited; 3=between Very Limited and Basic; 4=Basic; 5=between Basic and Satisfactory; 6=Satisfactory; 7=between Satisfactory and Accomplished; 8=Accomplished

PERCENTAGE SATISFACTORY (Levels 2 or 3)

Grade	Year	White	African Amer	Hispanic	Econ Disadv	Special Educ	LEP	At Risk	Migrant	Male	Female	All	District	Number Tested (All Students)
4	2012	50.0	55.8	56.3	56.1	12.5	55.2	45.9		50.0	63.1	56.6	60.6	332
	2013	71.4	54.9	57.6	57.1	41.7	46.9	49.0		52.7	63.7	58.0	63.9	281
	2014	62.5	48.2	62.2	56.3	35.7	55.4	47.9		49.6	64.2	57.2	61.9	257

NUMBER TESTED IN GRADE 4													
2012	8	104	199	314	16	87	183		164	168	332	7,039	
2013	14	91	158	266	12	64	102		146	135	281	6,771	
2014	8	83	148	240	14	56	163		123	134	257	7,022	

PERCENTAGE SATISFACTORY (Levels 2 or 3)

Grade	Year	White	African Amer	Hispanic	Econ Disadv	Special Educ	LEP	At Risk	Migrant	Male	Female	All	District	Number Tested (All Students)
7	2012	66.7	60.6	55.3	55.8	8.7	30.1	37.9		55.1	60.9	57.9	59.2	591
	2013	78.6	56.6	57.0	56.2	16.7	41.4	42.2		53.3	62.9	58.3	57.1	518
	2014	85.7	39.2	53.4	50.3	22.2	38.2	39.7		46.5	58.8	52.6	54.6	517

NUMBER TESTED IN GRADE 7													
2012	12	104	452	516	23	183	335		312	279	591	9,456	
2013	14	83	402	473	12	222	306		246	272	518	9,785	
2014	14	97	373	455	9	199	363		260	257	517	10,339	

NUMBER UNSATISFACTORY (Level 1)

Grade	Year	White	African Amer	Hispanic	Econ Disadv	Special Educ	LEP	At Risk	Migrant	Male	Female	All	District	Number Tested (All Students)
4	2012	4	46	87	138	14	39	99		82	62	144	2,772	332
	2013	4	41	67	114	7	34	52		69	49	118	2,442	281
	2014	3	43	56	105	9	25	85		62	48	110	2,675	257

NUMBER TESTED IN GRADE 4													
2012	8	104	199	314	16	87	183		164	168	332	7,039	
2013	14	91	158	266	12	64	102		146	135	281	6,771	
2014	8	83	148	240	14	56	163		123	134	257	7,022	

NUMBER UNSATISFACTORY (Level 1)

Grade	Year	White	African Amer	Hispanic	Econ Disadv	Special Educ	LEP	At Risk	Migrant	Male	Female	All	District	Number Tested (All Students)
7	2012	4	41	202	228	21	128	208		140	109	249	3,859	591
	2013	3	36	173	207	10	130	177		115	101	216	4,198	518
	2014	2	59	174	226	7	123	219		139	106	245	4,690	517

NUMBER TESTED IN GRADE 7													
2012	12	104	452	516	23	183	335		312	279	591	9,456	
2013	14	83	402	473	12	222	306		246	272	518	9,785	
2014	14	97	373	455	9	199	363		260	257	517	10,339	

PERCENTAGE ADVANCED (Level 3)

Grade	Year	White	African Amer	Hispanic	Econ Disadv	Special Educ	LEP	At Risk	Migrant	Male	Female	All	District	Number Tested (All Students)
4	2012	0.0	1.0	3.5	2.5	0.0	2.3	1.1		2.4	2.4	2.4	5.1	332
	2013	7.1	1.1	3.2	3.4	8.3	1.6	1.0		2.1	4.4	3.2	4.7	281
	2014	12.5	1.2	2.7	2.9	0.0	3.6	1.2		1.6	3.7	2.7	3.7	257

NUMBER TESTED IN GRADE 4													
2012	8	104	199	314	16	87	183		164	168	332	7,039	
2013	14	91	158	266	12	64	102		146	135	281	6,771	
2014	8	83	148	240	14	56	163		123	134	257	7,022	

PERCENTAGE ADVANCED (Level 3)

Grade	Year	White	African Amer	Hispanic	Econ Disadv	Special Educ	LEP	At Risk	Migrant	Male	Female	All	District	Number Tested (All Students)
7	2012	16.7	4.8	2.7	2.7	0.0	0.0	0.6		1.9	6.1	3.9	3.4	591
	2013	28.6	3.6	3.5	3.0	0.0	0.0	0.3		2.8	5.5	4.2	1.5	518
	2014	7.1	3.1	1.6	2.2	0.0	0.0	0.0		1.2	3.5	2.3	3.0	517

NUMBER TESTED IN GRADE 7													
2012	12	104	452	516	23	183	335		312	279	591	9,456	
2013	14	83	402	473	12	222	306		246	272	518	9,785	
2014	14	97	373	455	9	199	363		260	257	517	10,339	

AVERAGE PERCENTAGE OF ITEMS CORRECT BY REPORTING CATEGORY

Grade	Year	REPORTING CATEGORY			
		1. Composition ¹ GR 4: Personal Narrative GR 7: Expository	1. Composition ¹ GR 4: Expository GR 7: Personal Narrative	2. Revision	3. Editing
4	2012	1.9	1.9	57.6	55.9
	2013	4.0	3.8	51.8	61.5
	2014	4.1	3.8	61.2	54.1
7	2012	1.9	2.3	64.3	57.5
	2013	4.2	4.7	62.6	58.9
	2014	3.8	4.4	61.4	54.8

¹Average score points (range 0-8). A STAAR composition is rated twice on a scale of 1 to 4, and the ratings are summed to determine score points for the composition. Score point scale: 0=Non-scorable; 2=Very Limited; 3=between Very Limited and Basic; 4=Basic; 5=between Basic and Satisfactory; 6=Satisfactory; 7=between Satisfactory and Accomplished; 8=Accomplished

PERCENTAGE SATISFACTORY (Levels 2 or 3)

Grade	Year	White	African Amer	Hispanic	Econ Disadv	Special Educ	LEP	At Risk	Migrant	Male	Female	All	District	Number Tested (All Students)
3	2012	63.6	45.3	48.7	48.0	29.2	48.1	44.4		52.6	44.2	48.6	55.4	582
	2013	61.5	40.2	58.4	54.1	22.7	58.1	50.0		54.5	54.9	54.7	57.5	565
	2014	61.5	44.4	56.2	53.9	25.0	55.1	48.7		53.4	55.4	54.4	59.3	658
4	2012	42.9	29.8	56.4	51.6	37.5	56.5	48.9		54.3	49.7	52.1	53.0	605
	2013	71.4	43.2	53.9	52.8	27.3	52.6	51.3		55.5	50.7	53.2	57.5	579
	2014	62.5	30.1	57.2	53.6	27.8	56.5	49.1		51.7	54.0	52.9	59.0	497
5	2012	66.7	47.1	65.9	63.3	25.0	67.2	60.0		65.8	61.4	63.4	64.1	582
	2013	70.0	69.9	77.4	76.4	52.0	76.7	72.0		74.6	78.1	76.2	81.7	562
	2014	75.0	59.8	82.2	77.8	75.0	82.0	75.6		80.1	75.5	77.9	81.4	520
3-5	2012	58.3	40.2	57.1	54.3	31.0	57.1	50.9		57.2	52.1	54.7	57.5	1,769
	2013	67.6	51.3	63.0	61.0	34.8	62.1	57.5		61.5	61.1	61.3	65.3	1,706
	2014	65.5	45.4	64.5	61.2	39.7	63.8	57.2		61.5	61.0	61.3	66.3	1,675

NUMBER TESTED IN GRADES 3-5													
2012	24	286	1,393	1,712	84	1,073	1,259		885	884	1,769	35,372	
2013	37	300	1,304	1,649	69	1,008	1,259		882	823	1,706	34,686	
2014	29	313	1,274	1,584	58	982	1,366		827	848	1,675	35,222	

PERCENTAGE SATISFACTORY (Levels 2 or 3)

Grade	Year	White	African Amer	Hispanic	Econ Disadv	Special Educ	LEP	At Risk	Migrant	Male	Female	All	District	Number Tested (All Students)
6	2012	92.9	43.8	73.7	69.2	26.3	68.2	59.9		74.3	66.1	69.9	66.4	534
	2013	93.3	51.5	65.1	63.3	16.7	61.9	53.1		69.5	59.9	64.7	60.6	569
	2014	81.8	57.3	64.4	63.6	40.0	59.7	53.6		61.6	65.3	63.3	64.3	477
7	2012	91.7	50.5	60.5	60.2	32.0	48.5	42.3		65.6	55.1	60.6	59.9	571
	2013	78.6	51.8	64.4	61.4	20.0	52.7	49.2		65.5	62.1	63.7	59.9	529
	2014	78.6	47.9	50.1	49.7	22.2	38.5	38.4		54.7	48.8	51.8	55.1	512
8	2012	*	40.3	60.4	57.5	33.3	45.0	48.4		58.0	53.9	56.0	51.9	386
	2013	*	53.8	71.9	69.7	62.5	65.3	61.6		67.4	69.0	68.2	74.0	352
	2014	*	52.9	74.7	70.7	46.2	68.8	65.7	*	73.0	67.8	70.3	73.2	340
6-8	2012	83.9	45.7	65.3	62.9	30.2	57.7	50.6		66.5	59.0	62.7	60.3	1,491
	2013	81.8	52.3	66.5	64.1	36.8	59.1	54.2		67.6	62.9	65.2	63.7	1,450
	2014	83.3	52.7	61.7	60.1	37.5	54.6	51.3	*	61.8	59.5	60.6	63.3	1,329

NUMBER TESTED IN GRADES 6-8													
2012	31	243	1,157	1,330	53	558	897		737	754	1,491	26,044	
2013	33	266	1,079	1,333	38	599	897		712	738	1,450	26,676	
2014	30	260	977	1,184	32	559	972	1	672	657	1,329	27,304	

NUMBER UNSATISFACTORY (Level 1)

Grade	Year	White	African Amer	Hispanic	Econ Disadv	Special Educ	LEP	At Risk	Migrant	Male	Female	All	District	Number Tested (All Students)
3	2012	4	52	234	293	17	190	269		144	155	299	5,287	582
	2013	5	61	178	250	17	140	230		132	124	256	5,086	565
	2014	5	74	216	288	18	173	278		152	148	300	4,988	658
4	2012	4	73	206	284	20	155	232		144	146	290	5,511	605
	2013	4	54	208	265	16	167	191		134	137	271	4,919	579
	2014	3	58	166	219	13	127	202		113	121	234	4,803	497
5	2012	2	46	158	206	21	115	177		91	122	213	4,228	582
	2013	3	31	96	128	12	75	114		74	59	134	2,035	562
	2014	2	39	70	108	4	55	104		53	62	115	2,088	520
3-5	2012	10	171	598	783	58	460	678		379	423	802	15,026	1,769
	2013	12	146	482	643	45	382	535		340	320	661	12,040	1,706
	2014	10	171	452	615	35	355	584		318	331	649	11,879	1,675

NUMBER TESTED IN GRADES 3-5													
2012	24	286	1,393	1,712	84	1,073	1,259			885	884	1,769	35,372
2013	37	300	1,304	1,649	69	1,008	1,259			882	823	1,706	34,686
2014	29	313	1,274	1,584	58	982	1,366			827	848	1,675	35,222

NUMBER UNSATISFACTORY (Level 1)

Grade	Year	White	African Amer	Hispanic	Econ Disadv	Special Educ	LEP	At Risk	Migrant	Male	Female	All	District	Number Tested (All Students)
6	2012	1	45	110	152	14	89	143		63	98	161	3,327	534
	2013	1	50	145	196	10	98	153		87	114	201	4,133	569
	2014	2	41	125	155	6	91	160		98	77	175	3,478	477
7	2012	1	50	172	200	17	86	187		103	122	225	3,705	571
	2013	3	41	146	186	8	106	159		86	106	192	3,851	529
	2014	3	50	184	227	7	120	221		115	132	247	4,536	512
8	2012	*	37	120	142	6	61	145		81	89	170	3,319	386
	2013	*	36	71	96	6	41	99		58	54	112	1,709	352
	2014	*	32	65	90	7	43	92	*	44	57	101	2,001	340
6-8	2012	5	132	402	494	37	236	475		247	309	556	10,351	1,491
	2013	6	127	362	478	24	245	411		231	274	505	9,693	1,450
	2014	5	123	374	472	20	254	473	*	257	266	523	10,015	1,329

NUMBER TESTED IN GRADES 6-8													
2012	31	243	1,157	1,330	53	558	897			737	754	1,491	26,044
2013	33	266	1,079	1,333	38	599	897			712	738	1,450	26,676
2014	30	260	977	1,184	32	559	972	1		672	657	1,329	27,304

PERCENTAGE ADVANCED (Level 3)

Grade	Year	White	African Amer	Hispanic	Econ Disadv	Special Educ	LEP	At Risk	Migrant	Male	Female	All	District	Number Tested (All Students)
3	2012	9.1	7.4	4.6	4.8	8.3	4.4	3.5		6.3	4.3	5.3	7.9	582
	2013	23.1	4.9	4.9	5.1	0.0	6.3	5.0		5.9	5.5	5.7	9.1	565
	2014	15.4	1.5	9.1	8.2	0.0	7.8	5.7		7.4	9.3	8.4	10.4	658
4	2012	14.3	0.0	5.3	4.3	0.0	3.9	3.1		4.8	3.8	4.3	6.1	605
	2013	14.3	6.3	8.9	9.1	0.0	8.0	7.9		9.3	9.0	9.2	9.5	579
	2014	25.0	4.8	8.5	8.7	0.0	8.6	7.6		9.8	7.6	8.7	14.0	497
5	2012	16.7	4.6	6.5	6.0	0.0	6.3	5.0		7.1	5.4	6.2	10.4	582
	2013	0.0	3.9	6.4	5.9	4.0	5.3	4.2		7.6	4.4	6.0	12.8	562
	2014	37.5	6.2	14.0	13.1	12.5	14.4	11.0		16.9	10.7	13.8	15.7	520
3-5	2012	12.5	3.8	5.5	5.0	2.4	4.8	3.8		6.0	4.5	5.3	8.1	1,769
	2013	13.5	5.0	6.7	6.7	1.4	6.5	5.6		7.6	6.3	7.0	10.4	1,706
	2014	24.1	3.8	10.4	9.8	3.4	10.1	7.9		11.1	9.2	10.1	13.3	1,675

NUMBER TESTED IN GRADE 3-5													
2012	24	286	1,393	1,712	84	1,073	1,381			885	884	1,769	35,372
2013	37	300	1,304	1,649	69	1,008	1,259			882	823	1,706	34,686
2014	29	313	1,274	1,584	58	982	1,366			827	848	1,675	35,222

PERCENTAGE ADVANCED (Level 3)

Grade	Year	White	African Amer	Hispanic	Econ Disadv	Special Educ	LEP	At Risk	Migrant	Male	Female	All	District	Number Tested (All Students)
6	2012	28.6	8.8	14.1	13.8	5.3	10.0	7.8		14.7	13.8	14.2	9.8	534
	2013	20.0	10.7	9.4	9.4	0.0	5.1	2.8		11.9	8.8	10.4	8.5	569
	2014	45.5	11.5	12.8	11.0	0.0	7.5	5.8		16.1	9.5	13.0	9.6	477
7	2012	25.0	6.9	5.5	5.4	0.0	1.2	1.9		8.0	5.5	6.8	6.3	571
	2013	7.1	4.7	7.1	6.2	0.0	1.8	1.0		7.2	7.1	7.2	4.8	529
	2014	14.3	5.2	6.0	5.3	0.0	1.5	1.1		7.1	5.4	6.3	6.7	512
8	2012	*	0.0	0.7	0.3	0.0	0.0	0.0		1.0	0.0	0.5	0.4	386
	2013	*	0.0	0.8	0.9	0.0	1.7	1.2		1.7	0.0	0.9	0.9	352
	2014	*	0.0	0.4	0.0	0.0	0.0	0.0	*	0.0	0.6	0.3	1.0	340
6-8	2012	22.6	5.8	7.3	7.2	1.9	5.4	3.5		8.4	7.3	7.8	6.1	1,491
	2013	12.1	5.6	6.5	6.2	0.0	3.2	1.7		7.7	6.1	6.9	5.3	1,450
	2014	23.3	6.2	7.0	6.0	0.0	3.6	2.5	*	8.8	5.5	7.1	6.2	1,329

NUMBER TESTED IN GRADE 6-8													
2012	31	243	1,157	1,330	53	558	962		737	754	1,491	26,044	
2013	33	266	1,079	1,333	38	599	897		712	738	1,450	26,676	
2014	30	260	977	1,184	32	559	972	1	672	657	1,329	27,304	

AVERAGE PERCENTAGE OF ITEMS CORRECT BY REPORTING CATEGORY

Grade	Year	REPORTING CATEGORY				
		1. Numbers, Operations, and Quantitative Reasoning	2. Patterns, Relationships, and Algebraic Reasoning	3. Geometry and Spatial Reasoning	4. Measurement	5. Probability and Statistics
3	2012	53.9	55.7	65.5	54.2	45.6
	2013	55.7	54.8	65.6	63.3	61.9
	2014	61.5	59.9	58.9	60.7	54.3
4	2012	58.4	58.4	60.6	52.7	58.0
	2013	60.5	60.5	68.5	56.5	48.8
	2014	57.9	64.4	65.3	57.8	56.7
5	2012	58.5	57.2	60.6	53.2	58.8
	2013	63.6	59.4	61.6	60.6	64.6
	2014	67.3	63.2	69.6	59.0	64.6
3-5	2012	57.0	57.1	62.2	53.3	54.2
	2013	59.9	58.3	65.3	60.1	58.3
	2014	62.2	62.3	64.1	59.3	58.2

AVERAGE PERCENTAGE OF ITEMS CORRECT BY REPORTING CATEGORY

Grade	Year	REPORTING CATEGORY				
		1. Numbers, Operations, and Quantitative Reasoning	2. Patterns, Relationships, and Algebraic Reasoning	3. Geometry and Spatial Reasoning	4. Measurement	5. Probability and Statistics
6	2012	53.4	60.7	56.6	52.6	54.4
	2013	55.6	56.5	51.4	44.3	52.3
	2014	53.1	52.1	53.6	52.2	55.2
7	2012	52.1	54.0	54.8	45.2	49.4
	2013	53.5	55.3	56.8	45.6	45.4
	2014	55.6	47.3	45.4	40.2	49.2
8	2012	45.4	39.9	38.2	39.0	44.9
	2013	44.4	50.2	42.3	43.3	43.1
	2014	46.6	49.1	47.4	40.9	49.3
6-8	2012	50.8	52.7	51.2	46.2	50.0
	2013	52.1	54.6	51.2	44.6	47.6
	2014	52.4	49.5	48.9	44.7	51.4

PERCENTAGE SATISFACTORY (Levels 2 or 3)

Test	Year	White	African Amer	Hispanic	Econ Disadv	Special Educ	LEP	At Risk	Migrant	Male	Female	All	District
ALGEBRA I	2012	91.7	68.6	82.4	80.5	35.3	71.9	69.5		79.0	82.8	80.8	74.7
	2013	92.9	67.1	82.9	79.7	63.6	61.8	68.0		80.2	81.7	80.9	72.5
	2014	100.0	69.7	80.8	79.8	52.0	75.5	73.4		78.2	80.5	79.3	78.0
Tests Taken	2012	12	51	329	369	17	89	225		214	203	417	8,795
	2013	14	76	345	399	11	76	225		237	218	455	9,251
	2014	13	89	338	391	25	106	267		229	231	460	9,524

NUMBER UNSATISFACTORY (Level 1)

Test	Year	White	African Amer	Hispanic	Econ Disadv	Special Educ	LEP	At Risk	Migrant	Male	Female	All	District
ALGEBRA I	2012	1	16	58	72	11	25	64		45	35	80	2,226
	2013	1	25	59	81	4	29	72		47	40	87	2,540
	2014	0	27	65	79	12	26	71		50	45	95	2,099
Tests Taken	2012	12	51	329	369	17	89	225		214	203	417	8,795
	2013	14	76	345	399	11	76	225		237	218	455	9,251
	2014	13	89	338	391	25	106	267		229	231	460	9,524

PERCENTAGE ADVANCED (Level 3)

Test	Year	White	African Amer	Hispanic	Econ Disadv	Special Educ	LEP	At Risk	Migrant	Male	Female	All	District
ALGEBRA I	2012	16.7	7.8	9.4	9.8	0.0	2.2	2.4		10.3	9.4	9.8	7.0
	2013	21.4	10.5	13.3	13.3	0.0	3.9	4.0		14.8	12.8	13.8	8.6
	2014	30.8	10.1	13.3	13.6	0.0	2.8	5.2		14.0	14.7	14.3	9.9
Tests Taken	2012	12	51	329	369	17	89	210		214	203	417	8,795
	2013	14	76	345	399	11	76	225		237	218	455	9,251
	2014	13	89	338	391	25	106	267		229	231	460	9,524

AVERAGE PERCENTAGE OF ITEMS CORRECT BY REPORTING CATEGORY

ALGEBRA I	1. Functional Relationships	2. Properties and Attributes of Functions	3. Linear Functions	4. Linear Equations and Inequalities	5. Quadratic and Other Nonlinear Functions
2012	56.5	50.3	53.2	49.1	51.2
2013	56.6	50.4	55.4	57.1	52.6
2014	54.1	52.5	57.4	54.6	52.9

PERCENTAGE SATISFACTORY (Levels 2 or 3)

Grade	Year	White	African Amer	Hispanic	Econ Disadv	Special Educ	LEP	At Risk	Migrant	Male	Female	All	District	Number Tested (All Students)
5	2012	42.9	50.6	52.8	52.8	18.5	51.2	46.6		57.5	48.6	52.7	58.2	548
	2013	62.5	39.6	58.0	54.7	15.4	55.0	51.2		60.1	50.2	55.3	65.1	552
	2014	42.9	45.2	55.0	52.1	30.8	54.6	42.8		56.7	48.8	52.7	61.3	330

NUMBER TESTED IN GRADE 5													
2012	7	85	430	527	27	320	412		252	296	548	10,697	
2013	8	106	414	532	26	313	400		283	269	552	10,180	
2014	7	93	209	303	13	119	243		164	166	330	9,073	

PERCENTAGE SATISFACTORY (Levels 2 or 3)

Grade	Year	White	African Amer	Hispanic	Econ Disadv	Special Educ	LEP	At Risk	Migrant	Male	Female	All	District	Number Tested (All Students)
8	2012	86.7	47.1	60.2	59.2	21.1	37.5	40.7		63.2	57.1	60.1	54.0	587
	2013	78.6	51.9	62.0	60.4	50.0	39.6	41.9		65.8	57.0	61.6	65.8	537
	2014	91.7	53.8	58.5	56.4	30.8	34.1	43.2	*	58.8	58.0	58.4	61.9	519

NUMBER TESTED IN GRADE 8													
2012	15	87	462	502	19	128	329		291	296	587	9,431	
2013	14	106	392	472	18	139	301		281	256	537	8,998	
2014	12	91	393	436	13	167	333	1	238	281	519	9,466	

NUMBER UNSATISFACTORY (Level 1)

Grade	Year	White	African Amer	Hispanic	Econ Disadv	Special Educ	LEP	At Risk	Migrant	Male	Female	All	District	Number Tested (All Students)
5	2012	4	42	203	249	22	156	220		107	152	259	4476	548
	2013	3	64	174	241	22	141	195		113	134	247	3551	552
	2014	4	51	94	145	9	54	139		71	85	156	3511	330

NUMBER TESTED IN GRADE 5													
2012	7	85	430	527	27	320	412		252	296	548	10,697	
2013	8	106	414	532	26	313	400		283	269	552	10,180	
2014	7	93	209	303	13	119	243		164	166	330	9,073	

NUMBER UNSATISFACTORY (Level 1)

Grade	Year	White	African Amer	Hispanic	Econ Disadv	Special Educ	LEP	At Risk	Migrant	Male	Female	All	District	Number Tested (All Students)
8	2012	2	46	184	205	15	80	195		107	127	234	4335	587
	2013	3	51	149	187	9	84	175		96	110	206	3074	537
	2014	1	42	163	190	9	110	189	*	98	118	216	3605	519

NUMBER TESTED IN GRADE 8													
2012	15	87	462	502	19	128	329		291	296	587	9,431	
2013	14	106	392	472	18	139	301		281	256	537	8,998	
2014	12	91	393	436	13	167	333	1	238	281	519	9,466	

PERCENTAGE ADVANCED (Level 3)

Grade	Year	White	African Amer	Hispanic	Econ Disadv	Special Educ	LEP	At Risk	Migrant	Male	Female	All	District	Number Tested (All Students)
5	2012	14.3	3.5	3.3	3.2	0.0	2.2	2.2		3.6	3.4	3.5	6.5	548
	2013	0.0	0.9	4.1	3.0	3.8	2.6	2.0		4.2	2.6	3.4	6.6	552
	2014	14.3	1.1	2.4	2.0	7.7	2.5	1.6		4.9	1.2	3.0	5.3	330

NUMBER TESTED IN GRADE 5													
2012	7	85	430	527	27	320	412		252	296	548	10,697	
2013	8	106	414	532	26	313	400		283	269	552	10,180	
2014	7	93	209	303	13	119	243		164	166	330	9,073	

PERCENTAGE ADVANCED (Level 3)

Grade	Year	White	African Amer	Hispanic	Econ Disadv	Special Educ	LEP	At Risk	Migrant	Male	Female	All	District	Number Tested (All Students)
8	2012	26.7	2.3	5.8	5.4	0.0	0.0	0.9		8.2	4.1	6.1	4.2	587
	2013	35.7	5.7	9.4	9.5	5.6	2.2	2.7		12.5	7.4	10.1	7.1	537
	2014	25.0	14.3	11.7	10.8	0.0	0.0	3.3	*	17.6	8.9	12.9	11.3	519

NUMBER TESTED IN GRADE 8													
2012	15	87	462	502	19	128	329		291	296	587	9,431	
2013	14	106	392	472	18	139	301		281	256	537	8,998	
2014	12	91	393	436	13	167	333	1	238	281	519	9,466	

AVERAGE PERCENTAGE OF ITEMS CORRECT BY REPORTING CATEGORY

Grade	Year	REPORTING CATEGORY			
		1. Matter and Energy	2. Force, Motion, and Energy	3. Earth and Space	4. Organisms and Environments
5	2012	69.9	70.5	61.7	60.2
	2013	63.2	64.5	56.3	59.1
	2014	60.8	63.1	55.3	60.6
8	2012	57.7	56.6	58.9	56.6
	2013	61.6	58.2	56.1	58.5
	2014	58.9	58.9	53.8	65.2

PERCENTAGE SATISFACTORY (Levels 2 and 3)

Test	Year	White	African Amer	Hispanic	Econ Disadv	Special Educ	LEP	At Risk	Migrant	Male	Female	All	District
BIOLOGY	2012	*	73.8	85.1	84.6	56.3	75.3	77.6		82.9	84.9	83.9	82.9
	2013	*	81.6	86.0	85.0	75.0	72.2	79.5		81.5	90.0	85.9	84.4
	2014	100.0	92.3	85.1	88.1	72.0	79.3	87.1		83.1	92.9	87.4	89.8
Tests Taken	2012	4	42	228	266	16	81	192		146	146	292	8,881
	2013	5	49	257	301	12	72	205		157	170	327	9,374
	2014	6	65	235	270	25	82	224		177	140	317	9,672

NUMBER UNSATISFACTORY (Level 1)

Test	Year	White	African Amer	Hispanic	Econ Disadv	Special Educ	LEP	At Risk	Migrant	Male	Female	All	District
BIOLOGY	2012	*	11	34	41	7	20	43		25	22	47	1,522
	2013	*	9	36	45	3	20	42		29	17	46	1,467
	2014	0	5	35	32	7	17	29		30	10	40	987
Tests Taken	2012	4	42	228	266	16	81	192		146	146	292	8,881
	2013	5	49	257	301	12	72	205		157	170	327	9,374
	2014	6	65	235	270	25	82	224		177	140	317	9,672

PERCENTAGE ADVANCED (Level 3)

Test	Year	White	African Amer	Hispanic	Econ Disadv	Special Educ	LEP	At Risk	Migrant	Male	Female	All	District
BIOLOGY	2012	*	0.0	1.8	1.5	0.0	0.0	1.0		2.1	1.4	1.7	4.8
	2013	*	2.0	3.1	3.3	0.0	2.8	1.5		3.2	2.9	3.1	7.5
	2014	16.7	0.0	3.0	3.0	0.0	1.2	1.8		3.4	2.9	3.2	7.5
Tests Taken	2012	4	42	228	266	16	81	192		146	146	292	8,881
	2013	5	49	257	301	12	72	205		157	170	327	9,374
	2014	6	65	235	270	25	82	224		177	140	317	9,672

AVERAGE PERCENTAGE OF ITEMS CORRECT BY REPORTING CATEGORY

BIOLOGY	1. Cell Structure and Function	2. Mechanisms of Genetics	3. Biological Evolution and Classification	4. Biological Processes and Systems	5. Interdependence within Environmental Systems
2012	47.3	46.8	54.7	47.1	51.4
2013	55.0	48.9	56.3	54.1	57.0
2014	47.7	55.7	59.7	58.2	47.4

PERCENTAGE SATISFACTORY (Levels 2 or 3)

Grade	Year	White	African Amer	Hispanic	Econ Disadv	Special Educ	LEP	At Risk	Migrant	Male	Female	All	District	Number Tested (All Students)
8	2012	78.6	44.8	54.8	54.0	15.8	26.2	35.0		61.8	48.0	54.8	52.5	586
	2013	85.7	46.2	51.9	50.5	16.7	27.3	32.7		57.9	46.9	52.6	59.3	536
	2014	91.7	48.4	44.6	44.8	23.1	15.1	29.5	*	51.1	43.1	46.7	53.5	518

NUMBER TESTED IN GRADE 8													
2012	14	87	462	502	19	130	329		288	298	586	9,392	
2013	14	106	391	471	18	139	300		280	256	536	8,991	
2014	12	91	392	435	13	166	332	1	237	281	518	9,464	

NUMBER UNSATISFACTORY (Level 1)

Grade	Year	White	African Amer	Hispanic	Econ Disadv	Special Educ	LEP	At Risk	Migrant	Male	Female	All	District	Number Tested (All Students)
8	2012	3	48	209	231	16	96	214		110	155	265	4462	586
	2013	2	57	188	233	15	101	202		118	136	254	3656	536
	2014	1	47	217	240	10	141	234	*	116	160	276	4402	518

NUMBER TESTED IN GRADE8													
2012	14	87	462	502	19	130	329		288	298	586	9,392	
2013	14	106	391	471	18	139	300		280	256	536	8,991	
2014	12	91	392	435	13	166	332	1	237	281	518	9,464	

PERCENTAGE ADVANCED (Level 3)

Grade	Year	White	African Amer	Hispanic	Econ Disadv	Special Educ	LEP	At Risk	Migrant	Male	Female	All	District	Number Tested (All Students)
8	2012	42.9	10.3	7.8	8.6	5.3	0.0	1.8		12.8	6.4	9.6	7.1	586
	2013	42.9	10.4	9.0	9.3	5.6	1.4	1.7		13.2	8.2	10.8	8.8	536
	2014	33.3	3.3	8.4	6.7	0.0	0.0	1.5	*	11.0	6.4	8.5	7.3	518

NUMBER TESTED IN GRADE 8													
2012	14	87	462	502	19	130	329		288	298	586	9,392	
2013	14	106	391	471	18	139	300		280	256	536	8,991	
2014	12	91	392	435	13	166	332	1	237	281	518	9,464	

AVERAGE PERCENTAGE OF ITEMS CORRECT BY REPORTING CATEGORY

Grade	Year	REPORTING CATEGORY			
		1. History	2. Geography and Culture	3. Government and Citizenship	4. Economics, Science, Technology, and Society
8	2012	52.7	57.3	51.1	49.2
	2013	56.0	59.4	45.7	49.4
	2014	52.1	45.0	49.5	55.3

PERCENTAGE SATISFACTORY (Levels 2 or 3)

Test	Year	White	African Amer	Hispanic	Econ Disadv	Special Educ	LEP	At Risk	Migrant	Male	Female	All	District
U.S. HISTORY	2012												*
	2013												90.2
	2014	*	85.3	86.7	87.2	60.0	82.0	84.9		86.5	88.2	87.4	92.0
Tests Taken	2012												4
	2013												51
	2014	3	34	181	195	10	50	159		111	119	230	7,801

NUMBER UNSATISFACTORY (Level 1)

Test	Year	White	African Amer	Hispanic	Econ Disadv	Special Educ	LEP	At Risk	Migrant	Male	Female	All	District
U.S. HISTORY	2012												*
	2013												5
	2014	*	5	24	25	4	9	24		15	14	29	625
Tests Taken	2012												4
	2013												51
	2014	3	34	181	195	10	50	159		111	119	230	7,801

PERCENTAGE ADVANCED (Level 3)

Test	Year	White	African Amer	Hispanic	Econ Disadv	Special Educ	LEP	At Risk	Migrant	Male	Female	All	District
U.S. HISTORY	2012												*
	2013												2.0
	2014	*	2.9	0.6	1.5	0.0	0.0	0.0		0.9	2.5	1.7	10.3
Tests Taken	2012												4
	2013												51
	2014	3	34	181	195	10	50	159		111	119	230	7,801

AVERAGE PERCENTAGE OF ITEMS CORRECT BY REPORTING CATEGORY

U.S. HISTORY	1. History	2. Geography and Culture	3. Government and Citizenship	4. Economics, Science, Technology, and Society
2012				
2013				
2014	50.6	60.3	55.8	61.5

PERCENTAGE SATISFACTORY (Levels 2 or 3)

Grade	Year	White	African Amer	Hispanic	Econ Disadv	Special Educ	LEP	At Risk	Migrant	Male	Female	All	District	Number Tested (All Students)
3	2012			62.5	62.4	25.0	61.9	61.9		59.9	65.2	62.4	65.5	322
	2013			66.7	66.8	14.3	66.0	66.1	*	59.9	73.9	66.7	69.6	315
	2014			60.9	60.5	12.5	60.5	60.4		52.6	69.0	60.9	65.2	345
4	2012			67.2	67.0	27.3	66.9	67.2		61.0	74.4	67.2	64.4	271
	2013			62.9	62.9	33.3	62.7	62.9		61.8	63.9	62.8	61.0	301
	2014			60.8	61.0	0.0	60.7	60.2		56.6	64.4	60.8	60.8	245
5	2012			77.9	77.6	16.7	78.4	78.0		78.1	77.2	77.6	72.1	232
	2013	*		90.4	90.4	37.5	90.4	90.3		87.6	93.8	90.5	86.5	210
	2014			86.9	86.9	87.5	86.8	86.9		84.9	89.4	86.9	83.0	252
3-5	2012			68.4	68.2	24.1	68.2	68.1		64.8	71.7	68.2	66.8	825
	2013	*		71.3	71.4	25.8	71.1	71.2	*	67.9	75.1	71.3	70.6	826
	2014			68.6	68.6	36.4	68.5	68.3		64.3	73.0	68.6	68.7	842

NUMBER TESTED IN GRADES 3-5													
2012			822	821	29	814	813		418	407	825	14,102	
2013	1		823	818	31	813	808	1	427	398	826	13,810	
2014			841	813	22	834	830		423	419	842	14,654	

NUMBER UNSATISFACTORY (Level 1)

Grade	Year	White	African Amer	Hispanic	Econ Disadv	Special Educ	LEP	At Risk	Migrant	Male	Female	All	District	Number Tested (All Students)
3	2012			120	120	9	121	121		67	54	121	1,957	322
	2013			105	103	12	105	104	*	63	41	105	1,697	315
	2014			135	131	7	135	134		81	54	135	2,005	345
4	2012			89	89	8	89	88		57	32	89	1,728	271
	2013			111	111	6	110	109		60	52	112	1,915	301
	2014			96	92	6	95	96		49	47	96	1,891	245
5	2012			51	52	5	49	50		23	29	52	998	232
	2013	*		20	20	5	20	20		14	6	20	449	210
	2014			33	32	1	33	33		21	12	33	692	252
3-5	2012			260	261	22	259	259		147	115	262	4,683	825
	2013	*		236	234	23	235	233	*	137	99	237	4,061	826
	2014			264	255	14	263	263		151	113	264	4,588	842

NUMBER TESTED IN GRADES 3-5													
2012			822	821	29	814	813			418	407	825	14,102
2013	1		823	818	31	813	808	1		427	398	826	13,810
2014			841	813	22	834	830			423	419	842	14,654

PERCENTAGE ADVANCED (Level 3)

Grade	Year	White	African Amer	Hispanic	Econ Disadv	Special Educ	LEP	At Risk	Migrant	Male	Female	All	District	Number Tested (All Students)
3	2012			10.3	10.0	8.3	10.1	10.1		6.6	14.2	10.2	13.4	322
	2013			16.8	16.8	0.0	16.8	16.9	*	17.2	16.6	16.8	17.4	315
	2014			13.6	14.2	0.0	13.2	13.0		12.3	14.9	13.6	17.6	345
4	2012			17.3	17.4	9.1	16.7	16.8		17.1	17.6	17.3	13.0	271
	2013			12.4	12.0	0.0	12.5	12.6		11.5	13.2	12.3	13.4	301
	2014			7.8	8.1	0.0	7.9	7.9		4.4	10.6	7.8	12.5	245
5	2012			16.9	16.8	0.0	16.7	16.7		14.3	18.9	16.8	12.1	232
	2013	*		11.0	11.0	0.0	10.5	10.6		9.7	12.4	11.0	11.6	210
	2014			17.5	17.6	0.0	17.2	17.1		15.8	19.5	17.5	15.8	252
3-5	2012			14.5	14.4	6.9	14.1	14.1		12.2	16.7	14.4	12.9	825
	2013	*		13.7	13.6	0.0	13.7	13.7	*	13.1	14.3	13.7	14.6	826
	2014			13.1	13.4	0.0	12.8	12.8		11.3	14.8	13.1	15.4	842

NUMBER TESTED IN GRADE 3-5													
2012			822	821	29	814	813		418	407	825	14,102	
2013	1		823	818	31	813	808	1	427	398	826	13,810	
2014			841	813	22	834	830		423	419	842	14,654	

AVERAGE PERCENTAGE OF ITEMS CORRECT BY REPORTING CATEGORY

Grade	Year	REPORTING CATEGORY		
		1. Understanding Across Genres	2. Understanding/Analysis of Literary Texts	3. Understanding/Analysis of Informational Texts
3	2012	61.6	56.9	48.0
	2013	58.0	60.8	60.1
	2014	62.0	53.6	55.5
4	2012	55.6	65.4	62.6
	2013	60.3	60.9	53.7
	2014	59.9	58.6	59.2
5	2012	59.7	67.9	62.9
	2013	61.8	63.6	71.8
	2014	60.7	68.6	68.3
3-5	2012	59.1	62.8	57.0
	2013	59.8	61.5	60.7
	2014	61.0	59.5	60.4

PERCENTAGE SATISFACTORY (Levels 2 or 3)

Grade	Year	White	African Amer	Hispanic	Econ Disadv	Special Educ	LEP	At Risk	Migrant	Male	Female	All	District	Number Tested (All Students)
4	2012			71.0	70.9	27.3	70.8	71.1		66.4	76.4	71.0	68.9	276
	2013			66.0	66.0	33.3	66.0	66.2		60.0	72.2	65.9	62.2	299
	2014			66.4	66.9	16.7	66.0	65.8		57.0	74.4	66.4	65.6	247

NUMBER TESTED IN GRADE 4													
2012			276	275	11	274	273		149	127	276	4,905	
2013			297	297	9	294	293		155	144	299	4,958	
2014			247	239	6	244	243		114	133	247	4,841	

NUMBER UNSATISFACTORY (Level 1)

Grade	Year	White	African Amer	Hispanic	Econ Disadv	Special Educ	LEP	At Risk	Migrant	Male	Female	All	District	Number Tested (All Students)
4	2012			80	80	8	80	79		50	30	80	1,524	276
	2013			101	101	6	100	99		62	40	102	1,876	299
	2014			83	79	5	83	83		49	34	83	1,667	247

NUMBER TESTED IN GRADE 4													
2012			276	275	11	274	273		149	127	276	4,905	
2013			297	297	9	294	293		155	144	299	4,958	
2014			247	239	6	244	243		114	133	247	4,841	

PERCENTAGE ADVANCED (Level 3)

Grade	Year	White	African Amer	Hispanic	Econ Disadv	Special Educ	LEP	At Risk	Migrant	Male	Female	All	District	Number Tested (All Students)
4	2012			4.7	4.7	0.0	4.7	4.8		2.7	7.1	4.7	4.7	276
	2013			4.0	4.0	0.0	3.7	3.8		2.6	5.6	4.0	3.6	299
	2014			2.4	2.5	0.0	2.5	2.5		0.9	3.8	2.4	5.9	247

NUMBER TESTED IN GRADE 4													
2012			276	275	11	274	273		149	127	276	4,905	
2013			297	297	9	294	293		155	144	299	4,958	
2014			247	239	6	244	243		114	133	247	4,841	

AVERAGE PERCENTAGE OF ITEMS CORRECT BY REPORTING CATEGORY

Grade	Year	REPORTING CATEGORY			
		1. Composition ¹ Personal Narrative	1. Composition ¹ Expository	2. Revision	3. Editing
4	2012	2.0	2.0	60.5	66.2
	2013	4.5	4.1	57.8	68.2
	2014	4.6	4.0	63.7	65.8

¹Average score points (range 0-8). A STAAR composition is rated twice on a scale of 1 to 4, and the ratings are summed to determine score points for the composition. Score point scale: 0=Non-scorable; 2=Very Limited; 3=between Very Limited and Basic; 4=Basic; 5=between Basic and Satisfactory; 6=Satisfactory; 7=between Satisfactory and Accomplished; 8=Accomplished

PERCENTAGE SATISFACTORY (Levels 2 or 3)

Grade	Year	White	African Amer	Hispanic	Econ Disadv	Special Educ	LEP	At Risk	Migrant	Male	Female	All	District	Number Tested (All Students)
3	2012			*	*		*	*			*	*	36.6	1
	2013			*	*	*	*	*	*	*	*	*	20.5	4
	2014			*	*		*	*		*	*	*	23.0	3
4	2012			*	*		*				*	*	28.4	1
	2013			*	*		*	*		*	*	*	27.3	4
	2014			*			*	*		*	*	*	22.8	2
5	2012			16.7	16.7		*	*		*	*	16.7	24.1	6
	2013			*	*		*	*		*		*	41.5	2
	2014			22.2	25.0		22.2	22.2		16.7	*	22.2	38.8	9
3-5	2012			12.5	12.5		14.3	16.7		*	16.7	12.5	31.7	8
	2013			40.0	40.0	*	33.3	33.3	*	28.6	*	40.0	30.9	10
	2014			28.6	20.0		28.6	28.6		12.5	50.0	28.6	29.2	14

NUMBER TESTED IN GRADES 3-5													
2012			8	8		7	6		2	6	8	259	
2013			10	10	1	9	9	1	7	3	10	233	
2014			14	10		14	14		8	6	14	295	

NUMBER UNSATISFACTORY (Level 1)

Grade	Year	White	African Amer	Hispanic	Econ Disadv	Special Educ	LEP	At Risk	Migrant	Male	Female	All	District	Number Tested (All Students)
3	2012			*	*		*	*			*	*	83	1
	2013			*	*	*	*	*	*	*	*	*	58	4
	2014			*	*		*	*		*	*	*	77	3
4	2012			*	*		*				*	*	53	1
	2013			*	*		*	*		*	*	*	48	4
	2014			*			*	*		*	*	*	61	2
5	2012			5	5		*	*		*	*	5	41	6
	2013			*	*		*	*		*		*	55	2
	2014			7	6		7	7		5	*	7	71	9
3-5	2012			7	7		6	5		*	5	7	177	8
	2013			6	6	*	6	6	*	5	*	6	161	10
	2014			10	8		10	10		7	3	10	209	14

NUMBER TESTED IN GRADES 3-5													
2012			8	8			7	6		2	6	8	259
2013			10	10	1		9	9	1	7	3	10	233
2014			14	10			14	14		8	6	14	295

PERCENTAGE ADVANCED (Level 3)

Grade	Year	White	African Amer	Hispanic	Econ Disadv	Special Educ	LEP	At Risk	Migrant	Male	Female	All	District	Number Tested (All Students)
3	2012			*	*		*	*			*	*	0.8	1
	2013			*	*	*	*	*	*	*	*	*	1.4	4
	2014			*	*		*	*		*	*	*	0.0	3
4	2012			*	*		*				*	*	2.7	1
	2013			*	*		*	*		*	*	*	3.0	4
	2014			*			*	*		*	*	*	1.3	2
5	2012			0.0	0.0		*	*		*	*	0.0	1.9	6
	2013			*	*		*	*		*		*	1.1	2
	2014			0.0	0.0		0.0	0.0		0.0	*	0.0	0.9	9
3-5	2012			0.0	0.0		0.0	0.0		*	0.0	0.0	1.5	8
	2013			0.0	0.0	*	0.0	0.0	*	0.0	*	0.0	1.7	10
	2014			0.0	0.0		0.0	0.0		0.0	0.0	0.0	0.7	14

NUMBER TESTED IN GRADE 3-5													
2012			8	8		7	6		2	6	8	259	
2013			10	10	1	9	9	1	7	3	10	233	
2014			14	10		14	14		8	6	14	295	

AVERAGE PERCENTAGE OF ITEMS CORRECT BY REPORTING CATEGORY

Grade	Year	REPORTING CATEGORY				
		1. Numbers, Operations, and Quantitative Reasoning	2. Patterns, Relationships, and Algebraic Reasoning	3. Geometry and Spatial Reasoning	4. Measurement	5. Probability and Statistics
3	2012	*	*	*	*	*
	2013	*	*	*	*	*
	2014	*	*	*	*	*
4	2012	*	*	*	*	*
	2013	*	*	*	*	*
	2014	*	*	*	*	*
5	2012	42.6	50.0	33.3	43.8	45.5
	2013	*	*	*	*	*
	2014	40.7	48.1	52.4	27.8	37.4
3-5	2012	43.1	51.6	33.3	43.8	38.7
	2013	48.2	43.8	55.4	60.0	47.2
	2014	46.4	48.5	46.2	36.6	39.5

PERCENTAGE SATISFACTORY (Levels 2 or 3)

Grade	Year	White	African Amer	Hispanic	Econ Disadv	Special Educ	LEP	At Risk	Migrant	Male	Female	All	District	Number Tested (All Students)
5	2012			46.3	46.3	*	45.0	47.4		50.0	44.0	46.3	45.4	41
	2013			71.4	71.4		71.4	76.9	*	60.0	*	71.4	43.0	14
	2014			59.8	59.3	37.5	59.3	59.3		63.9	54.3	59.5	55.6	200

NUMBER TESTED IN GRADE 5													
2012			41	41	3	40	38		16	25	41	1,164	
2013			14	14		14	13	2	10	4	14	1,122	
2014			199	194	8	199	199		108	92	200	2,304	

NUMBER UNSATISFACTORY (Level 1)

Grade	Year	White	African Amer	Hispanic	Econ Disadv	Special Educ	LEP	At Risk	Migrant	Male	Female	All	District	Number Tested (All Students)
5	2012			22	22	*	22	20		8	14	22	636	41
	2013			4	4		4	3	*	4	*	4	640	14
	2014			80	79	5	81	81		39	42	81	1022	200

NUMBER TESTED IN GRADE 5													
2012			41	41	3	40	38		16	25	41	1,164	
2013			14	14		14	13	2	10	4	14	1,122	
2014			199	194	8	199	199		108	92	200	2,304	

PERCENTAGE ADVANCED (Level 3)

Grade	Year	White	African Amer	Hispanic	Econ Disadv	Special Educ	LEP	At Risk	Migrant	Male	Female	All	District	Number Tested (All Students)
5	2012			0.0	0.0	*	0.0	0.0		0.0	0.0	0.0	2.2	41
	2013			0.0	0.0		0.0	0.0	*	0.0	*	0.0	1.9	14
	2014			2.0	2.1	0.0	2.0	2.0		1.9	2.2	2.0	2.9	200

NUMBER TESTED IN GRADE 5													
2012			41	41	3	40	38		16	25	41	1,164	
2013			14	14		14	13	2	10	4	14	1,122	
2014			199	194	8	199	199		108	92	200	2,304	

AVERAGE PERCENTAGE OF ITEMS CORRECT BY REPORTING CATEGORY

Grade	Year	REPORTING CATEGORY			
		1. Matter and Energy	2. Force, Motion, and Energy	3. Earth and Space	4. Organisms and Environments
5	2012	59.5	68.3	57.5	58.2
	2013	56.3	71.4	66.7	66.3
	2014	62.8	61.8	56.6	61.5

PERCENTAGE SATISFACTORY (Levels 2 or 3)

Grade	Year	White	African Amer	Hispanic	Econ Disadv	Special Educ	LEP	At Risk	Migrant	Male	Female	All	District	Number Tested (All Students)
3	2012			23.5	23.5		27.8	27.8		36.4	14.3	27.8	51.7	18
	2013			*	*		*	*			*	*	32.5	4
	2014												35.8	0
4	2012	*		*	*		*	*			*	*	23.7	5
	2013				*		*	*		*		*	32.7	1
	2014			*	*		*	*		*	*	*	25.4	3
5	2012			*	*		*	*		*		*	0.0	2
	2013			50.0	50.0		50.0	50.0		*	*	50.0	23.3	6
	2014												39.7	0
3-5	2012	*		26.1	26.1		28.0	30.4		30.8	25.0	28.0	39.6	25
	2013			30.0	36.4		36.4	36.4		*	12.5	36.4	31.0	11
	2014			*	*		*	*		*	*	*	34.8	3

NUMBER TESTED IN GRADES 3-5													
2012	1		23	23		25	23		13	12	25	682	
2013			10	11		11	11		3	8	11	523	
2014			3	3		3	3		1	2	3	454	

PERCENTAGE SATISFACTORY (Levels 2 or 3)

Grade	Year	White	African Amer	Hispanic	Econ Disadv	Special Educ	LEP	At Risk	Migrant	Male	Female	All	District	Number Tested (All Students)
6	2012	*		28.6	31.3		31.3	44.4		44.4	14.3	31.3	22.8	16
	2013			13.3	13.3		13.3	15.4		14.3	12.5	13.3	30.6	15
	2014			*	*		*	*		*		*	29.0	4
7	2012			20.0	16.7		20.0	12.5		25.0	*	20.0	16.9	15
	2013	*		*	0.0		0.0	*		*	*	0.0	24.3	6
	2014			0.0	0.0		0.0	*		*	*	0.0	24.8	7
8	2012			0.0	0.0		0.0	0.0		0.0	*	0.0	0.0	16
	2013			12.5	12.5		12.5	15.4		18.2	*	12.5	25.5	16
	2014			28.6	33.3		28.6	28.6		*	*	28.6	33.2	7
6-8	2012	*		15.9	15.9		17.0	19.2		21.9	6.7	17.0	12.7	47
	2013	*		11.1	10.8		10.8	12.9		15.0	5.9	10.8	26.8	37
	2014			16.7	20.0		16.7	20.0		18.2	14.3	16.7	29.1	18

NUMBER TESTED IN GRADES 6-8													
2012	1		44	44		47	26		32	15	47	620	
2013	1		36	37		37	31		20	17	37	634	
2014			18	15		18	15		11	7	18	722	

NUMBER UNSATISFACTORY (Level 1)

Grade	Year	White	African Amer	Hispanic	Econ Disadv	Special Educ	LEP	At Risk	Migrant	Male	Female	All	District	Number Tested (All Students)
3	2012			13	13		13	13		7	6	13	221	18
	2013			*	*		*	*			*	*	224	4
	2014												199	0
4	2012	*		*	*		*	*			*	*	106	5
	2013				*		*	*		*		*	68	1
	2014			*	*		*	*		*	*	*	53	3
5	2012			*	*		*	*		*		*	85	2
	2013			3	3		3	3		*	*	3	69	6
	2014												44	0
3-5	2012	*		17	17		18	16		9	9	18	412	25
	2013			7	7		7	7		*	7	7	361	11
	2014			*	*		*	*		*	*	*	296	3

NUMBER TESTED IN GRADES 3-5													
2012	1		23	23		25	23		13	12	25	682	
2013			10	11		11	11		3	8	11	523	
2014			3	3		3	3		1	2	3	454	

NUMBER UNSATISFACTORY (Level 1)

Grade	Year	White	African Amer	Hispanic	Econ Disadv	Special Educ	LEP	At Risk	Migrant	Male	Female	All	District	Number Tested (All Students)
6	2012	*		10	11		11	5		5	6	11	146	16
	2013			13	13		13	11		6	7	13	150	15
	2014			*	*		*	*		*		*	171	4
7	2012			12	10		12	7		9	*	12	177	15
	2013	*		*	6		6	*		*	*	6	162	6
	2014			7	6		7	*		*	*	7	176	7
8	2012			15	16		16	9		11	*	16	218	16
	2013			14	14		14	11		9	*	14	152	16
	2014			5	4		5	5		*	*	5	165	7
6-8	2012	*		37	37		39	21		25	14	39	541	47
	2013	*		32	33		33	27		17	16	33	464	37
	2014			15	12		15	12		9	6	15	512	18

NUMBER TESTED IN GRADES 6-8													
2012	1		44	44		47	26		32	15	47	620	
2013	1		36	37		37	31		20	17	37	634	
2014			18	15		18	15		11	7	18	722	

PERCENTAGE ADVANCED (Level 3)

Grade	Year	White	African Amer	Hispanic	Econ Disadv	Special Educ	LEP	At Risk	Migrant	Male	Female	All	District	Number Tested (All Students)
3	2012			0.0	0.0		0.0	0.0		0.0	0.0	0.0	4.6	18
	2013			*	*		*	*			*	*	1.5	4
	2014												2.3	0
4	2012	*		*	*		*	*			*	*	1.4	5
	2013				*		*	*		*		*	2.0	1
	2014			*	*		*	*		*	*	*	0.0	3
5	2012			*	*		*	*		*		*	0.0	2
	2013			0.0	0.0		0.0	0.0		*	*	0.0	0.0	6
	2014												0.0	0
3-5	2012	*		0.0	0.0		0.0	0.0		0.0	0.0	0.0	3.4	25
	2013			0.0	0.0		0.0	0.0		*	0.0	0.0	1.3	11
	2014			*	*		*	*		*	*	*	1.5	3

NUMBER TESTED IN GRADE 3-5													
2012	1		23	23		25	23		13	12	25	682	
2013			10	11		11	11		3	8	11	523	
2014			3	3		3	3		1	2	3	454	

PERCENTAGE ADVANCED (Level 3)

Grade	Year	White	African Amer	Hispanic	Econ Disadv	Special Educ	LEP	At Risk	Migrant	Male	Female	All	District	Number Tested (All Students)
6	2012	*		0.0	0.0		0.0	0.0		0.0	0.0	0.0	1.1	16
	2013			0.0	0.0		0.0	0.0		0.0	0.0	0.0	2.3	15
	2014			*	*		*	*		*		*	3.3	4
7	2012			0.0	0.0		0.0	0.0		0.0	*	0.0	0.0	15
	2013	*		*	0.0		0.0	*		*	*	0.0	0.9	6
	2014			0.0	0.0		0.0	*		*	*	0.0	0.0	7
8	2012			0.0	0.0		0.0	0.0		0.0	*	0.0	0.0	16
	2013			0.0	0.0		0.0	0.0		0.0	*	0.0	0.0	16
	2014			0.0	0.0		0.0	0.0		*	*	0.0	0.4	7
6-8	2012	*		0.0	0.0		0.0	0.0		0.0	0.0	0.0	0.3	47
	2013	*		0.0	0.0		0.0	0.0		0.0	0.0	0.0	1.1	37
	2014			0.0	0.0		0.0	0.0		0.0	0.0	0.0	1.2	18

NUMBER TESTED IN GRADE 6-8													
2012	1		44	44		47	26		32	15	47	620	
2013	1		36	37		37	31		20	17	37	634	
2014			18	15		18	15		11	7	18	722	

AVERAGE PERCENTAGE OF ITEMS CORRECT BY REPORTING CATEGORY

Grade	Year	REPORTING CATEGORY				
		1. Numbers, Operations, and Quantitative Reasoning	2. Patterns, Relationships, and Algebraic Reasoning	3. Geometry and Spatial Reasoning	4. Measurement	5. Probability and Statistics
3	2012	37.0	45.1	56.2	47.2	32.4
	2013	*	*	*	*	*
	2014					
4	2012	*	*	*	*	*
	2013	*	*	*	*	*
	2014	*	*	*	*	*
5	2012	*	*	*	*	*
	2013	52.8	36.1	45.2	39.6	59.1
	2014					
3-5	2012	41.3	46.5	52.3	44.0	37.4
	2013	46.7	40.9	45.4	43.2	47.4
	2014	*	*	*	*	*

AVERAGE PERCENTAGE OF ITEMS CORRECT BY REPORTING CATEGORY

Grade	Year	REPORTING CATEGORY				
		1. Numbers, Operations, and Quantitative Reasoning	2. Patterns, Relationships, and Algebraic Reasoning	3. Geometry and Spatial Reasoning	4. Measurement	5. Probability and Statistics
6	2012	35.5	39.6	35.9	35.9	31.3
	2013	37.9	30.6	33.3	30.0	16.7
	2014	*	*	*	*	*
7	2012	25.1	30.3	34.0	30.0	31.3
	2013	24.4	23.1	20.0	31.3	26.7
	2014	19.8	29.7	42.9	23.2	27.1
8	2012	36.4	37.1	34.4	37.5	40.6
	2013	35.2	30.8	27.3	34.1	30.6
	2014	29.9	28.6	28.6	40.7	31.4
6-8	2012	32.5	35.7	34.8	34.6	34.5
	2013	34.6	29.5	28.6	32.0	24.3
	2014	25.9	30.5	35.4	31.1	30.4

PERCENTAGE SATISFACTORY (Levels 2 and 3)

Test	Year	White	African Amer	Hispanic	Econ Disadv	Special Educ	LEP	At Risk	Migrant	Male	Female	All	District
ALGEBRA I	2012												42.9
	2013			61.5	64.3		66.7	66.7		66.7	*	66.7	51.2
	2014	*	*	78.9	83.3		76.2	76.2		80.0	72.7	76.2	42.9
Tests Taken	2012												282
	2013			13	14		15	15		12	3	15	320
	2014	1	1	19	18		21	21		10	11	21	471

NUMBER UNSATISFACTORY (Level 1)

Test	Year	White	African Amer	Hispanic	Econ Disadv	Special Educ	LEP	At Risk	Migrant	Male	Female	All	District
ALGEBRA I	2012												161
	2013			5	5		5	5		4	*	5	156
	2014	*	*	4	3		5	5		2	3	5	269
Tests Taken	2012												282
	2013			13	14		15	15		12	3	15	320
	2014	1	1	19	18		21	21		10	11	21	471

PERCENTAGE ADVANCED (Level 3)

Test	Year	White	African Amer	Hispanic	Econ Disadv	Special Educ	LEP	At Risk	Migrant	Male	Female	All	District
ALGEBRA I	2012												2.5
	2013			7.7	7.1		6.7	6.7		8.3	*	6.7	4.1
	2014	*	*	0.0	0.0		0.0	0.0		0.0	0.0	0.0	2.3
Tests Taken	2012												282
	2013			13	14		15	15		12	3	15	320
	2014	1	1	19	18		21	21		10	11	21	471

AVERAGE PERCENTAGE OF ITEMS CORRECT BY REPORTING CATEGORY

ALGEBRA I	1. Functional Relationships	2. Properties and Attributes of Functions	3. Linear Functions	4. Linear Equations and Inequalities	5. Quadratic and Other Nonlinear Functions
2012					
2013	48.3	47.8	45.3	28.0	39.3
2014	66.7	50.4	50.5	41.4	45.0

PERCENTAGE SATISFACTORY (Levels 2 or 3)

Grade	Year	White	African Amer	Hispanic	Econ Disadv	Special Educ	LEP	At Risk	Migrant	Male	Female	All	District	Number Tested (All Students)
5	2012			*	*		*	*		*		*	17.0	2
	2013			*	*		*	*		*	*	*	20.3	5
	2014												16.1	

NUMBER TESTED IN GRADE 5													
2012			2	2		2	1		2		2		88
2013			5	5		5	5		2	3	5		74
2014													56

PERCENTAGE SATISFACTORY (Levels 2 or 3)

Grade	Year	White	African Amer	Hispanic	Econ Disadv	Special Educ	LEP	At Risk	Migrant	Male	Female	All	District	Number Tested (All Students)
8	2012	*		23.1	20.0	*	20.0	30.0		20.0	*	20.0	14.2	15
	2013			6.3	6.3		6.3	7.7		9.1	*	6.3	13.3	16
	2014			0.0	0.0		0.0	0.0		*	*	0.0	17.0	7

NUMBER TESTED IN GRADE 8													
2012	1		13	15	1	15	10		10	5	15	226	
2013			16	16		16	13		11	5	16	210	
2014			7	6		7	7		3	4	7	277	

NUMBER UNSATISFACTORY (Level 1)

Grade	Year	White	African Amer	Hispanic	Econ Disadv	Special Educ	LEP	At Risk	Migrant	Male	Female	All	District	Number Tested (All Students)
5	2012			*	*		*	*		*		*	73	2
	2013			*	*		*	*		*	*	*	59	5
	2014												47	

NUMBER TESTED IN GRADE 5													
2012			2	2		2	1		2		2		88
2013			5	5		5	5		2	3	5		74
2014													56

NUMBER UNSATISFACTORY (Level 1)

Grade	Year	White	African Amer	Hispanic	Econ Disadv	Special Educ	LEP	At Risk	Migrant	Male	Female	All	District	Number Tested (All Students)
8	2012	*		10	12	*	12	7		8	*	12	194	15
	2013			15	15		15	12		10	*	15	182	16
	2014			7	6		7	7		*	*	7	230	7

NUMBER TESTED IN GRADE 8													
2012	1		13	15	1	15	10		10	5	15	226	
2013			16	16		16	13		11	5	16	210	
2014			7	6		7	7		3	4	7	277	

PERCENTAGE ADVANCED (Level 3)

Grade	Year	White	African Amer	Hispanic	Econ Disadv	Special Educ	LEP	At Risk	Migrant	Male	Female	All	District	Number Tested (All Students)
5	2012			*	*		*	*		*		*	1.1	2
	2013			*	*		*	*		*	*	*	0.0	5
	2014												0.0	

NUMBER TESTED IN GRADE 5													
2012			2	2		2	1		2		2		88
2013			5	5		5	5		2	3	5		74
2014													56

PERCENTAGE ADVANCED (Level 3)

Grade	Year	White	African Amer	Hispanic	Econ Disadv	Special Educ	LEP	At Risk	Migrant	Male	Female	All	District	Number Tested (All Students)
8	2012	*		0.0	0.0	*	0.0	0.0		0.0	*	0.0	0.0	15
	2013			0.0	0.0		0.0	0.0		0.0	*	0.0	0.0	16
	2014			0.0	0.0		0.0	0.0		*	*	0.0	0.0	7

NUMBER TESTED IN GRADE 8													
2012	1		13	15	1	15	10		10	5	15	226	
2013			16	16		16	13		11	5	16	210	
2014			7	6		7	7		3	4	7	277	

AVERAGE PERCENTAGE OF ITEMS CORRECT BY REPORTING CATEGORY

Grade	Year	REPORTING CATEGORY			
		1. Matter and Energy	2. Force, Motion, and Energy	3. Earth and Space	4. Organisms and Environments
5	2012	*	*	*	*
	2013	*	*	*	*
	2014				
8	2012	37.6	37.8	33.3	35.7
	2013	33.5	31.8	39.7	42.4
	2014	27.6	31.0	41.8	35.7

PERCENTAGE SATISFACTORY (Levels 2 and 3)

Test	Year	White	African Amer	Hispanic	Econ Disadv	Special Educ	LEP	At Risk	Migrant	Male	Female	All	District
BIOLOGY	2012												25.5
	2013			57.1	60.0		62.5	62.5		53.8	*	62.5	49.0
	2014	*		55.6	56.3		57.9	57.9		40.0	77.8	57.9	42.6
Tests Taken	2012												200
	2013			14	15		16	16		13	3	16	259
	2014	1		18	16		19	19		10	9	19	404

NUMBER UNSATISFACTORY (Level 1)

Test	Year	White	African Amer	Hispanic	Econ Disadv	Special Educ	LEP	At Risk	Migrant	Male	Female	All	District
BIOLOGY	2012												149
	2013			6	6		6	6		6	*	6	132
	2014	*		8	7		8	8		6	2	8	232
Tests Taken	2012												200
	2013			14	15		16	16		13	3	16	259
	2014	1		18	16		19	19		10	9	19	404

PERCENTAGE ADVANCED (Level 3)

Test	Year	White	African Amer	Hispanic	Econ Disadv	Special Educ	LEP	At Risk	Migrant	Male	Female	All	District
BIOLOGY	2012												0.0
	2013			0.0	0.0		0.0	0.0		0.0	*	0.0	0.0
	2014	*		0.0	0.0		0.0	0.0		0.0	0.0	0.0	0.2
Tests Taken	2012												200
	2013			14	15		16	16		13	3	16	259
	2014	1		18	16		19	19		10	9	19	404

AVERAGE PERCENTAGE OF ITEMS CORRECT BY REPORTING CATEGORY

BIOLOGY	1. Cell Structure and Function	2. Mechanisms of Genetics	3. Biological Evolution and Classification	4. Biological Processes and Systems	5. Interdependence within Environmental Systems
2012					
2013	44.9	40.9	44.4	41.5	34.1
2014	38.3	38.8	46.8	35.9	44.0

PERCENTAGE SATISFACTORY (Levels 2 or 3)

Grade	Year	White	African Amer	Hispanic	Econ Disadv	Special Educ	LEP	At Risk	Migrant	Male	Female	All	District	Number Tested (All Students)
8	2012	*		15.4	13.3	*	13.3	20.0		20.0	*	13.3	11.1	15
	2013			6.3	6.3		6.3	7.7		9.1	*	6.3	18.6	16
	2014			0.0	0.0		0.0	0.0		*	*	0.0	11.0	7

NUMBER TESTED IN GRADE 8													
2012	1		13	15	1	15	10		10	5	15	226	
2013			16	16		16	13		11	5	16	204	
2014			7	6		7	7		3	4	7	272	

NUMBER UNSATISFACTORY (Level 1)

Grade	Year	White	African Amer	Hispanic	Econ Disadv	Special Educ	LEP	At Risk	Migrant	Male	Female	All	District	Number Tested (All Students)
8	2012	*		11	13	*	13	8		8	*	13	201	15
	2013			15	15		15	12		10	*	15	166	16
	2014			7	6		7	7		*	*	7	242	7

NUMBER TESTED IN GRADE8													
2012	1		13	15	1	15	10		10	5	15	226	
2013			16	16		16	13		11	5	16	204	
2014			7	6		7	7		3	4	7	272	

PERCENTAGE ADVANCED (Level 3)

Grade	Year	White	African Amer	Hispanic	Econ Disadv	Special Educ	LEP	At Risk	Migrant	Male	Female	All	District	Number Tested (All Students)
8	2012	*		0.0	0.0	*	0.0	0.0		0.0	*	0.0	0.0	15
	2013			0.0	0.0		0.0	0.0		0.0	*	0.0	1.0	16
	2014			0.0	0.0		0.0	0.0		*	*	0.0	0.4	7

NUMBER TESTED IN GRADE 8													
2012	1		13	15	1	15	10		10	5	15	226	
2013			16	16		16	13		11	5	16	204	
2014			7	6		7	7		3	4	7	272	

AVERAGE PERCENTAGE OF ITEMS CORRECT BY REPORTING CATEGORY

Grade	Year	REPORTING CATEGORY			
		1. History	2. Geography and Culture	3. Government and Citizenship	4. Economics, Science, Technology, and Society
8	2012	31.0	42.2	29.4	27.5
	2013	30.9	30.7	30.2	23.4
	2014	27.1	34.5	25.0	19.6

PERCENTAGE SATISFACTORY (Levels 2 or 3)

Grade	Year	White	African Amer	Hispanic	Econ Disadv	Special Educ	LEP	At Risk	Migrant	Male	Female	All	District	Number Tested (All Students)
3	2012		71.4	37.5	53.3	53.3	28.6	50.0		44.4	66.7	53.3	54.7	15
	2013		*	53.8	62.5	62.5	62.5	60.0		66.7	*	62.5	67.5	16
	2014		25.0	88.9	52.9	55.6	*	52.9		46.2	*	55.6	63.3	18
4	2012	*	62.5	58.8	61.5	61.5	44.4	71.4		63.2	57.1	61.5	58.0	26
	2013		71.4	66.7	68.2	68.2	58.3	57.1		76.9	55.6	68.2	60.2	22
	2014		70.0	42.1	46.2	51.7	30.8	50.0		57.9	40.0	51.7	62.9	29
5	2012	*	60.0	55.6	58.1	58.1	50.0	55.2		63.2	50.0	58.1	67.0	31
	2013	*	78.6	85.0	83.3	83.3	81.3	86.7		80.0	90.9	83.3	86.5	36
	2014	*	80.0	90.9	87.1	87.9	87.5	92.3		88.9	86.7	87.9	86.3	33
3-5	2012	*	64.0	53.5	58.3	58.3	43.8	59.7		59.6	56.0	58.3	61.0	72
	2013	*	79.2	70.8	74.3	74.3	69.4	72.9		76.0	70.8	74.3	73.4	74
	2014	*	60.7	72.0	64.9	67.5	61.8	66.7		66.0	70.0	67.5	73.2	80

NUMBER TESTED IN GRADES 3-5													
2012	3	25	43	72	72	32	62			47	25	72	1,384
2013	1	24	48	74	74	36	59			50	24	74	1,434
2014	1	28	50	74	80	34	69			50	30	80	1,362

PERCENTAGE SATISFACTORY (Levels 2 or 3)

Grade	Year	White	African Amer	Hispanic	Econ Disadv	Special Educ	LEP	At Risk	Migrant	Male	Female	All	District	Number Tested (All Students)
6	2012	*	71.4	59.1	63.3	64.5	58.8	65.4		64.0	66.7	64.5	65.5	31
	2013	*	58.3	53.6	52.4	53.5	42.9	44.4		46.9	72.7	53.5	55.9	43
	2014		66.7	38.1	46.4	48.5	29.4	41.4		37.5	77.8	48.5	51.6	33
7	2012	*	33.3	72.0	63.3	64.7	83.3	63.3		70.8	50.0	64.7	57.3	34
	2013		71.4	52.2	58.6	56.7	52.9	58.6		54.2	66.7	56.7	61.0	30
	2014	*	46.2	50.0	46.2	48.8	47.4	48.7		46.7	54.5	48.8	55.4	41
8	2012	*	100.0	44.4	64.0	62.1	50.0	61.5		65.0	55.6	62.1	58.0	29
	2013	*	63.6	83.3	77.8	75.7	78.6	75.0		72.7	80.0	75.7	74.5	37
	2014		*	71.4	69.2	71.4	73.3	70.4		75.0	*	71.4	75.0	28
6-8	2012	*	71.4	60.0	63.5	63.8	63.4	63.4		66.7	56.0	63.8	60.3	94
	2013	*	63.3	62.7	62.6	61.8	55.8	58.8		56.4	75.0	61.8	63.6	110
	2014	*	55.6	52.9	52.7	54.9	49.0	52.6		52.6	62.5	54.9	60.0	102

NUMBER TESTED IN GRADES 6-8													
2012	3	21	65	85	94	41	82		69	25	94	1,571	
2013	3	30	75	107	110	52	97		78	32	110	1,687	
2014	1	27	68	93	102	51	95		78	24	102	1,689	

NUMBER UNSATISFACTORY (Level 1)

Grade	Year	White	African Amer	Hispanic	Econ Disadv	Special Educ	LEP	At Risk	Migrant	Male	Female	All	District	Number Tested (All Students)
3	2012		2	5	7	7	5	6		5	2	7	149	15
	2013		*	6	6	6	3	6		4	*	6	114	16
	2014		6	1	8	8	*	8		7	*	8	114	18
4	2012	*	3	7	10	10	5	6		7	3	10	201	26
	2013		2	5	7	7	5	6		3	4	7	184	22
	2014		3	11	14	14	9	13		8	6	14	170	29
5	2012	*	4	8	13	13	8	13		7	6	13	190	31
	2013	*	3	3	6	6	3	4		5	1	6	84	36
	2014	*	2	2	4	4	2	2		2	2	4	81	33
3-5	2012	*	9	20	30	30	18	25		19	11	30	540	72
	2013	*	5	14	19	19	11	16		12	7	19	382	74
	2014	*	11	14	26	26	13	23		17	9	26	365	80

NUMBER TESTED IN GRADES 3-5													
2012	3	25	43	72	72	32	62		47	25	72	1,384	
2013	1	24	48	74	74	36	59		50	24	74	1,434	
2014	1	28	50	74	80	34	69		50	30	80	1,362	

NUMBER UNSATISFACTORY (Level 1)

Grade	Year	White	African Amer	Hispanic	Econ Disadv	Special Educ	LEP	At Risk	Migrant	Male	Female	All	District	Number Tested (All Students)
6	2012	*	2	9	11	11	7	9		9	2	11	181	31
	2013	*	5	13	20	20	12	20		17	3	20	270	43
	2014		3	13	15	17	12	17		15	2	17	281	33
7	2012	*	4	7	11	12	2	11		7	5	12	244	34
	2013		2	11	12	13	8	12		11	2	13	202	30
	2014	*	7	13	21	21	10	20		16	5	21	266	41
8	2012	*	0	10	9	11	6	10		7	4	11	199	29
	2013	*	4	4	8	9	3	8		6	3	9	142	37
	2014		*	6	8	8	4	8		6	*	8	128	28
6-8	2012	*	6	26	31	34	15	30		23	11	34	624	94
	2013	*	11	28	40	42	23	40		34	8	42	614	110
	2014	*	12	32	44	46	26	45		37	9	46	675	102

NUMBER TESTED IN GRADES 6-8													
2012	3	21	65	85	94	41	82		69	25	94	1,571	
2013	3	30	75	107	110	52	97		78	32	110	1,687	
2014	1	27	68	93	102	51	95		78	24	102	1,689	

PERCENTAGE ADVANCED (Level 3)

Grade	Year	White	African Amer	Hispanic	Econ Disadv	Special Educ	LEP	At Risk	Migrant	Male	Female	All	District	Number Tested (All Students)
3	2012		0.0	0.0	0.0	0.0	0.0	0.0		0.0	0.0	0.0	3.3	15
	2013		*	0.0	0.0	0.0	0.0	0.0		0.0	*	0.0	4.3	16
	2014		0.0	0.0	0.0	0.0	*	0.0		0.0	*	0.0	4.8	18
4	2012	*	0.0	0.0	0.0	0.0	0.0	0.0		0.0	0.0	0.0	3.3	26
	2013		14.3	0.0	4.5	4.5	0.0	0.0		7.7	0.0	4.5	3.5	22
	2014		0.0	0.0	0.0	0.0	0.0	0.0		0.0	0.0	0.0	6.3	29
5	2012	*	0.0	0.0	0.0	0.0	0.0	0.0		0.0	0.0	0.0	4.9	31
	2013	*	14.3	10.0	11.1	11.1	12.5	10.0		12.0	9.1	11.1	7.4	36
	2014	*	10.0	4.5	6.5	6.1	6.3	7.7		11.1	0.0	6.1	10.3	33
3-5	2012	*	0.0	0.0	0.0	0.0	0.0	0.0		0.0	0.0	0.0	4.0	72
	2013	*	12.5	4.2	6.8	6.8	5.6	5.1		8.0	4.2	6.8	5.4	74
	2014	*	3.6	2.0	2.7	2.5	2.9	2.9		4.0	0.0	2.5	7.7	80

NUMBER TESTED IN GRADE 3-5													
2012	3	25	43	72	72	32	62			47	25	72	1,384
2013	1	24	48	74	74	36	59			50	24	74	1,434
2014	1	28	50	74	80	34	69			50	30	80	1,362

PERCENTAGE ADVANCED (Level 3)

Grade	Year	White	African Amer	Hispanic	Econ Disadv	Special Educ	LEP	At Risk	Migrant	Male	Female	All	District	Number Tested (All Students)
6	2012	*	0.0	4.5	3.3	3.2	0.0	0.0		0.0	16.7	3.2	3.6	31
	2013	*	0.0	0.0	0.0	0.0	0.0	0.0		0.0	0.0	0.0	3.1	43
	2014		11.1	0.0	3.6	3.0	0.0	3.4		4.2	0.0	3.0	2.9	33
7	2012	*	0.0	4.0	3.3	2.9	0.0	3.3		4.2	0.0	2.9	1.0	34
	2013		0.0	0.0	0.0	0.0	0.0	0.0		0.0	0.0	0.0	3.5	30
	2014	*	0.0	0.0	0.0	0.0	0.0	0.0		0.0	0.0	0.0	3.9	41
8	2012	*	0.0	0.0	0.0	0.0	0.0	0.0		0.0	0.0	0.0	1.1	29
	2013	*	0.0	8.3	5.6	5.4	14.3	6.3		9.1	0.0	5.4	2.5	37
	2014		*	0.0	0.0	0.0	0.0	0.0		0.0	*	0.0	2.9	28
6-8	2012	*	0.0	3.1	2.4	2.1	0.0	1.2		1.4	4.0	2.1	1.9	94
	2013	*	0.0	2.7	1.9	1.8	3.8	2.1		2.6	0.0	1.8	3.0	110
	2014	*	3.7	0.0	1.1	1.0	0.0	1.1		1.3	0.0	1.0	3.3	102

NUMBER TESTED IN GRADE 6-8													
2012	3	21	65	85	94	41	82		69	25	94	1,571	
2013	3	30	75	107	110	52	97		78	32	110	1,687	
2014	1	27	68	93	102	51	95		78	24	102	1,689	

AVERAGE PERCENTAGE OF ITEMS CORRECT BY REPORTING CATEGORY

Grade	Year	REPORTING CATEGORY		
		1. Understanding Across Genres (GR 3-5) 1. Understanding/Analysis Across Genres (GR 6-8)	2. Understanding/Analysis of Literary Texts	3. Understanding/Analysis of Informational Texts
3	2012	45.3	50.5	44.1
	2013	47.5	52.7	49.0
	2014	38.9	50.8	51.7
4	2012	51.9	62.4	56.2
	2013	47.2	63.0	54.5
	2014	42.2	53.0	53.8
5	2012	47.2	41.5	39.2
	2013	52.1	61.5	55.8
	2014	55.7	60.0	53.0
3-5	2012	48.5	50.9	46.4
	2013	49.6	60.0	53.9
	2014	47.0	55.4	53.0

AVERAGE PERCENTAGE OF ITEMS CORRECT BY REPORTING CATEGORY

Grade	Year	REPORTING CATEGORY		
		1. Understanding Across Genres (GR 3-5) 1. Understanding/Analysis Across Genres (GR 6-8)	2. Understanding/Analysis of Literary Texts	3. Understanding/Analysis of Informational Texts
6	2012	42.7	61.9	44.0
	2013	45.3	47.2	53.7
	2014	43.6	52.5	51.1
7	2012	56.6	55.0	42.7
	2013	55.4	52.0	44.9
	2014	49.7	52.8	44.7
8	2012	59.9	55.9	51.5
	2013	65.2	60.8	60.5
	2014	61.6	55.8	52.5
6-8	2012	53.1	57.6	45.9
	2013	54.8	53.1	53.6
	2014	51.0	53.5	48.9

PERCENTAGE SATISFACTORY (Levels 2 and 3)

Test	Year	White	African Amer	Hispanic	Econ Disadv	Special Educ	LEP	At Risk	Migrant	Male	Female	All	District
ENGLISH I	2012												
	2013												
	2014	*	66.7	80.0	68.8	70.6	75.0	66.7		60.0	85.7	70.6	50.6
Tests Taken	2012												
	2013												
	2014	1	6	10	16	17	8	15		10	7	17	405
ENGLISH II	2012												
	2013												
	2014	*	*	42.9	58.3	43.8	42.9	46.2		36.4	*	43.8	65.3
Tests Taken	2012												
	2013												
	2014	1	5	7	12	16	7	13		11	5	16	340

NUMBER UNSATISFACTORY (Level 1)

Test	Year	White	African Amer	Hispanic	Econ Disadv	Special Educ	LEP	At Risk	Migrant	Male	Female	All	District
ENGLISH I	2012												
	2013												
	2014	*	2	2	5	5	2	5		4	1	5	200
Tests Taken	2012												
	2013												
	2014	1	6	10	16	17	8	15		10	7	17	405
ENGLISH II	2012												
	2013												
	2014	*	*	4	5	9	4	7		7	*	9	118
Tests Taken	2012												
	2013												
	2014	1	5	7	12	16	7	13		11	5	16	340

PERCENTAGE ADVANCED (Level 3)

Test	Year	White	African Amer	Hispanic	Econ Disadv	Special Educ	LEP	At Risk	Migrant	Male	Female	All	District
ENGLISH I	2012												
	2013												
	2014	*	0.0	0.0	0.0	0.0	0.0	0.0		0.0	0.0	0.0	3.5
Tests Taken	2012												
	2013												
	2014	1	6	10	16	17	8	15		10	7	17	405
ENGLISH II	2012												
	2013												
	2014	*	*	0.0	8.3	6.3	0.0	7.7		9.1	*	6.3	12.6
Tests Taken	2012												
	2013												
	2014	1	5	7	12	16	7	13		11	5	16	340

AVERAGE PERCENTAGE OF ITEMS CORRECT BY REPORTING CATEGORY

ENGLISH I	1. Understanding & Analysis Across Genres	2. Understanding & Analysis of Literary Texts	3. Understanding & Analysis of Informational Texts	4. Literary Composition ¹	5. Revision	6. Editing
2012						
2013						
2014	61.8	56.9	55.6	3.2	55.6	59.5

ENGLISH II	1. Understanding & Analysis Across Genres	2. Understanding & Analysis of Literary Texts	3. Understanding & Analysis of Informational Texts	4. Expository Composition ¹	5. Revision	6. Editing
2012						
2013						
2014	51.6	45.8	45.8	2.6	41.7	50.7

¹Average score points (range 0-6). A STAAR M composition is rated twice on a scale of 0 to 3, and the ratings are summed to determine score points for the composition. Score point scale: 0=Non-scorable; 2=Very Limited; 3=between Very Limited and Basic; 4=Basic; 5=between Basic and Satisfactory; 6=Satisfactory

PERCENTAGE SATISFACTORY (Levels 2 or 3)

Grade	Year	White	African Amer	Hispanic	Econ Disadv	Special Educ	LEP	At Risk	Migrant	Male	Female	All	District	Number Tested (All Students)
4	2012	*	55.6	55.6	57.1	57.1	50.0	56.5		52.4	71.4	57.1	57.5	28
	2013		50.0	60.0	56.5	56.5	50.0	53.3		53.8	60.0	56.5	48.9	23
	2014		60.0	19.0	32.1	32.3	14.3	31.0		22.2	46.2	32.3	47.7	31

NUMBER TESTED IN GRADE 4													
2012	1	9	18	28	28	10	23		21	7	28	475	
2013		8	15	23	23	12	15		13	10	23	452	
2014		10	21	28	31	14	29		18	13	31	449	

PERCENTAGE SATISFACTORY (Levels 2 or 3)

Grade	Year	White	African Amer	Hispanic	Econ Disadv	Special Educ	LEP	At Risk	Migrant	Male	Female	All	District	Number Tested (All Students)
7	2012	*	71.4	56.5	58.1	60.6	54.5	60.0		52.2	80.0	60.6	56.7	33
	2013		42.9	57.1	51.9	53.6	53.3	55.6		50.0	66.7	53.6	63.7	28
	2014	*	61.5	52.0	52.6	55.0	42.1	52.6		58.6	45.5	55.0	62.9	40

NUMBER TESTED IN GRADE 7													
2012	1	7	23	31	33	11	30		23	10	33	586	
2013		7	21	27	28	15	27		22	6	28	509	
2014	1	13	25	38	40	19	38		29	11	40	599	

NUMBER UNSATISFACTORY (Level 1)

Grade	Year	White	African Amer	Hispanic	Econ Disadv	Special Educ	LEP	At Risk	Migrant	Male	Female	All	District	Number Tested (All Students)
4	2012	*	4	8	12	12	5	10		10	2	12	202	28
	2013		4	6	10	10	6	7		6	4	10	231	23
	2014		4	17	19	21	12	20		14	7	21	235	31

NUMBER TESTED IN GRADE 4													
2012	1	9	18	28	28	10	23		21	7	28	475	
2013		8	15	23	23	12	15		13	10	23	452	
2014		10	21	28	31	14	29		18	13	31	449	

NUMBER UNSATISFACTORY (Level 1)

Grade	Year	White	African Amer	Hispanic	Econ Disadv	Special Educ	LEP	At Risk	Migrant	Male	Female	All	District	Number Tested (All Students)
7	2012	*	2	10	13	13	5	12		11	2	13	254	33
	2013		4	9	13	13	7	12		11	2	13	185	28
	2014	*	5	12	18	18	11	18		12	6	18	222	40

NUMBER TESTED IN GRADE 7													
2012	1	7	23	31	33	11	30		23	10	33	586	
2013		7	21	27	28	15	27		22	6	28	509	
2014	1	13	25	38	40	19	38		29	11	40	599	

PERCENTAGE ADVANCED (Level 3)

Grade	Year	White	African Amer	Hispanic	Econ Disadv	Special Educ	LEP	At Risk	Migrant	Male	Female	All	District	Number Tested (All Students)
4	2012	*	11.1	5.6	7.1	7.1	0.0	4.3		9.5	0.0	7.1	5.3	28
	2013		12.5	20.0	17.4	17.4	25.0	20.0		23.1	10.0	17.4	8.6	23
	2014		10.0	4.8	7.1	6.5	7.1	6.9		11.1	0.0	6.5	8.5	31

NUMBER TESTED IN GRADE 4													
2012	1	9	18	28	28	10	23		21	7	28	475	
2013		8	15	23	23	12	15		13	10	23	452	
2014		10	21	28	31	14	29		18	13	31	449	

PERCENTAGE ADVANCED (Level 3)

Grade	Year	White	African Amer	Hispanic	Econ Disadv	Special Educ	LEP	At Risk	Migrant	Male	Female	All	District	Number Tested (All Students)
7	2012	*	0.0	4.3	6.5	6.1	9.1	6.7		4.3	10.0	6.1	2.7	33
	2013		0.0	4.8	3.7	3.6	6.7	3.7		4.5	0.0	3.6	6.3	28
	2014	*	7.7	4.0	5.3	5.0	5.3	5.3		6.9	0.0	5.0	6.3	40

NUMBER TESTED IN GRADE 7													
2012	1	7	23	31	33	11	30		23	10	33	586	
2013		7	21	27	28	15	27		22	6	28	509	
2014	1	13	25	38	40	19	38		29	11	40	599	

AVERAGE PERCENTAGE OF ITEMS CORRECT BY REPORTING CATEGORY

Grade	Year	REPORTING CATEGORY		
		1. Composition ¹ GR 4: Personal Narrative GR 7: Expository	2. Revision	3. Editing
4	2012	1.2	44.9	50.0
	2013	2.7	53.4	58.0
	2014	2.0	38.2	46.7
7	2012	1.4	48.7	52.2
	2013	2.1	53.8	46.4
	2014	2.6	53.7	47.1

¹Average score points (range 0-6). A STAAR M composition is rated twice on a scale of 0 to 3, and the ratings are summed to determine score points for the composition. Score point scale: 0=Non-scorable; 2=Very Limited; 3=between Very Limited and Basic; 4=Basic; 5=between Basic and Satisfactory; 6=Satisfactory

PERCENTAGE SATISFACTORY (Levels 2 or 3)

Grade	Year	White	African Amer	Hispanic	Econ Disadv	Special Educ	LEP	At Risk	Migrant	Male	Female	All	District	Number Tested (All Students)
3	2012		50.0	55.6	52.9	52.9	50.0	57.1		60.0	42.9	52.9	52.0	17
	2013		*	58.8	57.9	57.9	54.5	55.6		58.3	57.1	57.9	64.4	19
	2014		33.3	55.6	43.8	43.8	*	46.7		54.5	*	43.8	64.2	16
4	2012	*	42.9	73.3	65.2	65.2	88.9	65.0		64.7	66.7	65.2	61.2	23
	2013		57.1	73.3	68.2	68.2	69.2	71.4		61.5	77.8	68.2	61.7	22
	2014		45.5	57.1	51.7	53.1	64.3	55.2		42.1	69.2	53.1	70.3	32
5	2012	*	80.0	50.0	57.6	57.6	44.4	54.8		63.2	50.0	57.6	60.6	33
	2013	*	53.8	90.0	74.3	74.3	81.3	79.3		69.6	83.3	74.3	77.2	35
	2014	*	77.8	76.9	77.1	77.8	76.2	77.4		85.0	68.8	77.8	79.1	36
3-5	2012	*	60.0	59.1	58.9	58.9	57.1	58.5		63.0	51.9	58.9	58.7	73
	2013	*	54.5	75.0	68.4	68.4	70.0	70.5		64.6	75.0	68.4	69.1	76
	2014	*	53.8	66.1	61.3	61.9	70.0	62.7		62.0	61.8	61.9	72.7	84

NUMBER TESTED IN GRADES 3-5													
2012	3	25	44	73	73	35	65			46	27	73	1,354
2013	2	22	52	76	76	40	61			48	28	76	1,433
2014	1	26	56	80	84	40	75			50	34	84	1,378

PERCENTAGE SATISFACTORY (Levels 2 or 3)

Grade	Year	White	African Amer	Hispanic	Econ Disadv	Special Educ	LEP	At Risk	Migrant	Male	Female	All	District	Number Tested (All Students)
6	2012		*	23.8	33.3	33.3	18.8	33.3		38.1	16.7	33.3	46.2	27
	2013	*	50.0	50.0	47.6	46.5	40.9	43.2		50.0	36.4	46.5	54.3	43
	2014		44.4	55.0	51.9	51.6	40.0	44.4		39.1	87.5	51.6	52.0	31
7	2012	*	28.6	50.0	44.4	45.2	50.0	44.4		45.5	44.4	45.2	50.5	31
	2013		71.4	56.5	58.6	60.0	58.8	58.6		66.7	33.3	60.0	49.4	30
	2014	*	30.8	42.3	38.5	39.0	36.8	38.5		43.3	27.3	39.0	48.8	41
8	2012		60.0	42.1	50.0	51.6	61.5	53.6		45.0	63.6	51.6	46.2	31
	2013	*	72.7	70.0	71.9	69.7	72.7	67.9		70.0	69.2	69.7	71.4	33
	2014		*	75.0	76.0	77.8	71.4	76.9		82.6	*	77.8	71.0	27
6-8	2012	*	50.0	38.7	42.5	43.8	41.0	44.3		42.9	46.2	43.8	47.7	89
	2013	*	63.3	57.7	58.3	57.5	54.0	55.3		60.5	50.0	57.5	58.5	106
	2014	*	44.4	56.1	52.7	53.5	47.9	51.1		53.9	52.2	53.5	56.7	99

NUMBER TESTED IN GRADES 6-8													
2012	1	22	62	80	89	39	79		63	26	89	1,554	
2013	3	30	71	103	106	50	94		76	30	106	1,659	
2014	1	27	66	91	99	48	92		76	23	99	1,684	

NUMBER UNSATISFACTORY (Level 1)

Grade	Year	White	African Amer	Hispanic	Econ Disadv	Special Educ	LEP	At Risk	Migrant	Male	Female	All	District	Number Tested (All Students)
3	2012		4	4	8	8	4	6		4	4	8	157	17
	2013		*	7	8	8	5	8		5	3	8	120	19
	2014		4	4	9	9	*	8		5	*	9	113	16
4	2012	*	4	4	8	8	1	7		6	2	8	182	23
	2013		3	4	7	7	4	4		5	2	7	181	22
	2014		6	9	14	15	5	13		11	4	15	138	32
5	2012	*	2	10	14	14	10	14		7	7	14	220	33
	2013	*	6	2	9	9	3	6		7	2	9	142	35
	2014	*	2	6	8	8	5	7		3	5	8	125	36
3-5	2012	*	10	18	30	30	15	27		17	13	30	559	73
	2013	*	10	13	24	24	12	18		17	7	24	443	76
	2014	*	12	19	31	32	12	28		19	13	32	376	84

NUMBER TESTED IN GRADES 3-5													
2012	3	25	44	73	73	35	65			46	27	73	1,354
2013	2	22	52	76	76	40	61			48	28	76	1,433
2014	1	26	56	80	84	40	75			50	34	84	1,378

NUMBER UNSATISFACTORY (Level 1)

Grade	Year	White	African Amer	Hispanic	Econ Disadv	Special Educ	LEP	At Risk	Migrant	Male	Female	All	District	Number Tested (All Students)
6	2012		*	16	18	18	13	16		13	5	18	276	27
	2013	*	6	14	22	23	13	21		16	7	23	272	43
	2014		5	9	13	15	9	15		14	1	15	271	31
7	2012	*	5	11	15	17	5	15		12	5	17	276	31
	2013		2	10	12	12	7	12		8	4	12	257	30
	2014	*	9	15	24	25	12	24		17	8	25	310	41
8	2012		4	11	13	15	5	13		11	4	15	260	31
	2013	*	3	6	9	10	3	9		6	4	10	159	33
	2014		*	5	6	6	4	6		4	*	6	149	27
6-8	2012	*	11	38	46	50	23	44		36	14	50	812	89
	2013	*	11	30	43	45	23	42		30	15	45	688	106
	2014	*	15	29	43	46	25	45		35	11	46	730	99

NUMBER TESTED IN GRADES 6-8													
2012	1	22	62	80	89	39	79			63	26	89	1,554
2013	3	30	71	103	106	50	94			76	30	106	1,659
2014	1	27	66	91	99	48	92			76	23	99	1,684

PERCENTAGE ADVANCED (Level 3)

Grade	Year	White	African Amer	Hispanic	Econ Disadv	Special Educ	LEP	At Risk	Migrant	Male	Female	All	District	Number Tested (All Students)
3	2012		12.5	11.1	11.8	11.8	12.5	14.3		20.0	0.0	11.8	4.0	17
	2013		*	0.0	0.0	0.0	0.0	0.0		0.0	0.0	0.0	7.4	19
	2014		0.0	11.1	6.3	6.3	*	6.7		0.0	*	6.3	7.6	16
4	2012	*	0.0	0.0	0.0	0.0	0.0	0.0		0.0	0.0	0.0	1.7	23
	2013		14.3	13.3	13.6	13.6	7.7	7.1		15.4	11.1	13.6	4.7	22
	2014		0.0	4.8	3.4	3.1	7.1	3.4		5.3	0.0	3.1	6.5	32
5	2012	*	0.0	0.0	0.0	0.0	0.0	0.0		0.0	0.0	0.0	0.7	33
	2013	*	0.0	5.0	2.9	2.9	0.0	3.4		4.3	0.0	2.9	3.9	35
	2014	*	0.0	3.8	2.9	2.8	4.8	3.2		5.0	0.0	2.8	6.0	36
3-5	2012	*	4.0	2.3	2.7	2.7	2.9	3.1		4.3	0.0	2.7	1.8	73
	2013	*	4.5	5.8	5.3	5.3	2.5	3.3		6.3	3.6	5.3	5.0	76
	2014	*	0.0	5.4	3.8	3.6	7.5	4.0		4.0	2.9	3.6	6.5	84

NUMBER TESTED IN GRADE 3-5													
2012	3	25	44	73	73	35	65			46	27	73	1,354
2013	2	22	52	76	76	40	61			48	28	76	1,433
2014	1	26	56	80	84	40	75			50	34	84	1,378

PERCENTAGE ADVANCED (Level 3)

Grade	Year	White	African Amer	Hispanic	Econ Disadv	Special Educ	LEP	At Risk	Migrant	Male	Female	All	District	Number Tested (All Students)
6	2012		*	4.8	3.7	3.7	6.3	4.2		4.8	0.0	3.7	5.5	27
	2013	*	0.0	0.0	0.0	0.0	0.0	0.0		0.0	0.0	0.0	4.9	43
	2014		11.1	5.0	3.7	6.5	6.7	7.4		4.3	12.5	6.5	3.4	31
7	2012	*	0.0	0.0	0.0	0.0	0.0	0.0		0.0	0.0	0.0	1.1	31
	2013		0.0	4.3	3.4	3.3	5.9	3.4		4.2	0.0	3.3	3.0	30
	2014	*	0.0	0.0	0.0	0.0	0.0	0.0		0.0	0.0	0.0	2.3	41
8	2012		0.0	0.0	0.0	3.2	0.0	0.0		5.0	0.0	3.2	1.2	31
	2013	*	0.0	5.0	3.1	3.0	0.0	3.6		5.0	0.0	3.0	2.2	33
	2014		*	0.0	0.0	0.0	0.0	0.0		0.0	*	0.0	1.9	27
6-8	2012	*	0.0	1.6	1.3	2.2	2.6	1.3		3.2	0.0	2.2	2.6	89
	2013	*	0.0	2.8	1.9	1.9	2.0	2.1		2.6	0.0	1.9	3.4	106
	2014	*	3.7	1.5	1.1	2.0	2.1	2.2		1.3	4.3	2.0	2.6	99

NUMBER TESTED IN GRADE 6-8													
2012	1	22	62	80	89	39	79		63	26	89	1,554	
2013	3	30	71	103	106	50	94		76	30	106	1,659	
2014	1	27	66	91	99	48	92		76	23	99	1,684	

AVERAGE PERCENTAGE OF ITEMS CORRECT BY REPORTING CATEGORY

Grade	Year	REPORTING CATEGORY				
		1. Numbers, Operations, and Quantitative Reasoning	2. Patterns, Relationships, and Algebraic Reasoning	3. Geometry and Spatial Reasoning	4. Measurement	5. Probability and Statistics
3	2012	46.6	55.9	52.9	48.0	44.7
	2013	53.8	58.8	63.9	48.2	54.7
	2014	58.2	52.1	58.0	63.5	60.0
4	2012	52.2	53.0	44.3	45.7	32.6
	2013	61.2	62.7	55.5	50.0	59.1
	2014	51.7	55.0	41.3	44.8	38.3
5	2012	37.9	42.4	44.9	52.0	38.4
	2013	54.9	53.1	47.6	51.4	50.8
	2014	55.6	53.3	51.4	61.6	53.7
3-5	2012	44.4	48.9	46.6	49.1	38.0
	2013	56.5	57.3	54.0	50.2	54.2
	2014	54.6	53.7	48.8	55.6	49.0

AVERAGE PERCENTAGE OF ITEMS CORRECT BY REPORTING CATEGORY

Grade	Year	REPORTING CATEGORY				
		1. Numbers, Operations, and Quantitative Reasoning	2. Patterns, Relationships, and Algebraic Reasoning	3. Geometry and Spatial Reasoning	4. Measurement	5. Probability and Statistics
6	2012	43.1	39.6	38.3	30.9	44.4
	2013	44.2	43.0	59.7	30.6	55.0
	2014	45.4	46.1	53.2	44.1	57.5
7	2012	29.0	37.4	40.7	30.6	46.8
	2013	41.2	43.7	52.1	36.1	50.0
	2014	39.0	39.8	50.3	35.8	42.1
8	2012	34.2	49.3	47.8	41.3	46.0
	2013	41.5	52.1	46.0	47.9	54.2
	2014	44.1	52.9	44.4	43.3	47.2
6-8	2012	35.1	42.2	42.5	34.4	45.8
	2013	42.5	46.0	53.3	37.5	53.3
	2014	42.4	45.3	49.6	40.4	48.3

PERCENTAGE SATISFACTORY (Levels 2 and 3)

Test	Year	White	African Amer	Hispanic	Econ Disadv	Special Educ	LEP	At Risk	Migrant	Male	Female	All	District
ALGEBRA I	2012	*	*	*	14.3	14.3		14.3		0.0	*	14.3	32.5
	2013		57.1	33.3	57.1	47.1	42.9	50.0		45.5	50.0	47.1	36.9
	2014	*	*	45.5	43.8	41.2	50.0	42.9		45.5	33.3	41.2	46.1
Tests Taken	2012	1	4	2	7	7		7		6	1	7	280
	2013		7	9	14	17	7	16		11	6	17	339
	2014	2	4	11	16	17	8	14		11	6	17	360

NUMBER UNSATISFACTORY (Level 1)

Test	Year	White	African Amer	Hispanic	Econ Disadv	Special Educ	LEP	At Risk	Migrant	Male	Female	All	District
ALGEBRA I	2012	*	*	*	6	6		6		6	*	6	189
	2013		3	6	6	9	4	8		6	3	9	214
	2014	*	*	6	9	10	4	8		6	4	10	194
Tests Taken	2012	1	4	2	7	7		7		6	1	7	280
	2013		7	9	14	17	7	16		11	6	17	339
	2014	2	4	11	16	17	8	14		11	6	17	360

PERCENTAGE ADVANCED (Level 3)

Test	Year	White	African Amer	Hispanic	Econ Disadv	Special Educ	LEP	At Risk	Migrant	Male	Female	All	District
ALGEBRA I	2012	*	*	*	0.0	0.0		0.0		0.0	*	0.0	0.4
	2013		0.0	0.0	0.0	0.0	0.0	0.0		0.0	0.0	0.0	0.0
	2014	*	*	0.0	0.0	0.0	0.0	0.0		0.0	0.0	0.0	1.4
Tests Taken	2012	1	4	2	7	7		7		6	1	7	280
	2013		7	9	14	17	7	16		11	6	17	339
	2014	2	4	11	16	17	8	14		11	6	17	360

AVERAGE PERCENTAGE OF ITEMS CORRECT BY REPORTING CATEGORY

ALGEBRA I	1. Functional Relationships	2. Properties and Attributes of Functions	3. Linear Functions	4. Linear Equations and Inequalities	5. Quadratic and Other Nonlinear Functions
2012	33.3	35.7	40.5	41.1	26.5
2013	40.2	42.9	44.1	41.9	47.9
2014	46.1	37.1	40.2	33.8	38.7

PERCENTAGE SATISFACTORY (Levels 2 or 3)

Grade	Year	White	African Amer	Hispanic	Econ Disadv	Special Educ	LEP	At Risk	Migrant	Male	Female	All	District	Number Tested (All Students)
5	2012	*	20.0	40.0	31.3	31.3	37.5	28.6		38.9	21.4	31.3	48.8	32
	2013	*	78.6	47.4	60.0	60.0	46.7	57.1		60.9	58.3	60.0	58.1	35
	2014	*	62.5	52.4	55.2	56.7	37.5	52.0		64.7	46.2	56.7	55.5	30

NUMBER TESTED IN GRADE 5													
2012	1	10	20	32	32	16	28		18	14	32	531	
2013	2	14	19	35	35	15	28		23	12	35	540	
2014	1	8	21	29	30	16	25		17	13	30	501	

PERCENTAGE SATISFACTORY (Levels 2 or 3)

Grade	Year	White	African Amer	Hispanic	Econ Disadv	Special Educ	LEP	At Risk	Migrant	Male	Female	All	District	Number Tested (All Students)
8	2012		100.0	53.3	76.2	70.8	63.6	68.2		68.8	75.0	70.8	58.2	24
	2013	*	50.0	57.9	54.8	54.8	50.0	53.8		52.6	58.3	54.8	59.3	31
	2014		*	65.0	62.5	66.7	50.0	65.4		73.9	*	66.7	63.5	27

NUMBER TESTED IN GRADE 8													
2012		8	15	21	24	11	22		16	8	24	457	
2013	1	10	19	31	31	10	26		19	12	31	526	
2014		5	20	24	27	14	26		23	4	27	474	

NUMBER UNSATISFACTORY (Level 1)

Grade	Year	White	African Amer	Hispanic	Econ Disadv	Special Educ	LEP	At Risk	Migrant	Male	Female	All	District	Number Tested (All Students)
5	2012	*	8	12	22	22	10	20		11	11	22	272	32
	2013	*	3	10	14	14	8	12		9	5	14	226	35
	2014	*	3	10	13	13	10	12		6	7	13	223	30

NUMBER TESTED IN GRADE 5													
2012	1	10	20	32	32	16	28		18	14	32	531	
2013	2	14	19	35	35	15	28		23	12	35	540	
2014	1	8	21	29	30	16	25		17	13	30	501	

NUMBER UNSATISFACTORY (Level 1)

Grade	Year	White	African Amer	Hispanic	Econ Disadv	Special Educ	LEP	At Risk	Migrant	Male	Female	All	District	Number Tested (All Students)
8	2012		0	7	5	7	4	7		5	2	7	191	24
	2013	*	5	8	14	14	5	12		9	5	14	214	31
	2014		*	7	9	9	7	9		6	*	9	173	27

NUMBER TESTED IN GRADE 8													
2012		8	15	21	24	11	22		16	8	24	457	
2013	1	10	19	31	31	10	26		19	12	31	526	
2014		5	20	24	27	14	26		23	4	27	474	

PERCENTAGE ADVANCED (Level 3)

Grade	Year	White	African Amer	Hispanic	Econ Disadv	Special Educ	LEP	At Risk	Migrant	Male	Female	All	District	Number Tested (All Students)
5	2012	*	0.0	10.0	6.3	6.3	6.3	3.6		11.1	0.0	6.3	6.2	32
	2013	*	14.3	0.0	5.7	5.7	0.0	7.1		8.7	0.0	5.7	6.1	35
	2014	*	12.5	9.5	10.3	10.0	12.5	12.0		17.6	0.0	10.0	7.6	30

NUMBER TESTED IN GRADE 5													
2012	1	10	20	32	32	16	28		18	14	32	531	
2013	2	14	19	35	35	15	28		23	12	35	540	
2014	1	8	21	29	30	16	25		17	13	30	501	

PERCENTAGE ADVANCED (Level 3)

Grade	Year	White	African Amer	Hispanic	Econ Disadv	Special Educ	LEP	At Risk	Migrant	Male	Female	All	District	Number Tested (All Students)
8	2012		0.0	0.0	0.0	0.0	0.0	0.0		0.0	0.0	0.0	0.4	24
	2013	*	10.0	0.0	3.2	3.2	0.0	0.0		5.3	0.0	3.2	2.5	31
	2014		*	0.0	0.0	0.0	0.0	0.0		0.0	*	0.0	3.8	27

NUMBER TESTED IN GRADE 8													
2012		8	15	21	24	11	22		16	8	24	457	
2013	1	10	19	31	31	10	26		19	12	31	526	
2014		5	20	24	27	14	26		23	4	27	474	

AVERAGE PERCENTAGE OF ITEMS CORRECT BY REPORTING CATEGORY

Grade	Year	REPORTING CATEGORY			
		1. Matter and Energy	2. Force, Motion, and Energy	3. Earth and Space	4. Organisms and Environments
5	2012	65.6	53.5	50.3	58.5
	2013	71.9	76.8	57.7	68.6
	2014	63.9	77.9	60.3	71.5
8	2012	55.3	65.4	57.2	48.1
	2013	57.2	65.8	56.9	58.9
	2014	63.0	68.1	64.6	54.5

PERCENTAGE SATISFACTORY (Levels 2 and 3)

Test	Year	White	African Amer	Hispanic	Econ Disadv	Special Educ	LEP	At Risk	Migrant	Male	Female	All	District
BIOLOGY	2012	*	*	*	42.9	42.9		42.9		50.0	*	42.9	31.7
	2013		*	33.3	53.8	60.0	42.9	60.0		33.3	100.0	60.0	42.6
	2014	*	*	44.4	40.0	47.1	42.9	46.7		41.7	*	47.1	46.6
Tests Taken	2012	2	4	2	7	7		7		6	1	7	262
	2013		5	9	13	15	7	15		9	6	15	331
	2014	2	5	9	15	17	7	15		12	5	17	350

NUMBER UNSATISFACTORY (Level 1)

Test	Year	White	African Amer	Hispanic	Econ Disadv	Special Educ	LEP	At Risk	Migrant	Male	Female	All	District
BIOLOGY	2012	*	*	*	4	4		4		3	*	4	179
	2013		*	6	6	6	4	6		6	0	6	190
	2014	*	*	5	9	9	4	8		7	*	9	187
Tests Taken	2012	2	4	2	7	7		7		6	1	7	262
	2013		5	9	13	15	7	15		9	6	15	331
	2014	2	5	9	15	17	7	15		12	5	17	350

PERCENTAGE ADVANCED (Level 3)

Test	Year	White	African Amer	Hispanic	Econ Disadv	Special Educ	LEP	At Risk	Migrant	Male	Female	All	District
BIOLOGY	2012	*	*	*	0.0	0.0		0.0		0.0	*	0.0	0.0
	2013		*	0.0	0.0	0.0	0.0	0.0		0.0	0.0	0.0	0.0
	2014	*	*	0.0	0.0	0.0	0.0	0.0		0.0	*	0.0	1.1
Tests Taken	2012	1	4	2	7	7		7		6	1	7	262
	2013		5	9	13	15	7	15		9	6	15	331
	2014	2	5	9	15	17	7	15		12	5	17	350

AVERAGE PERCENTAGE OF ITEMS CORRECT BY REPORTING CATEGORY

BIOLOGY	1. Cell Structure and Function	2. Mechanisms of Genetics	3. Biological Evolution and Classification	4. Biological Processes and Systems	5. Interdependence within Environmental Systems
2012	46.0	51.8	51.8	49.2	39.7
2013	48.9	51.7	52.5	51.1	43.0
2014	37.9	49.3	51.5	47.7	47.1

PERCENTAGE SATISFACTORY (Levels 2 or 3)

Grade	Year	White	African Amer	Hispanic	Econ Disadv	Special Educ	LEP	At Risk	Migrant	Male	Female	All	District	Number Tested (All Students)
8	2012		75.0	40.0	47.6	50.0	36.4	45.5		62.5	25.0	50.0	52.3	24
	2013	*	60.0	47.4	51.6	51.6	60.0	50.0		63.2	33.3	51.6	59.5	31
	2014		*	70.0	70.8	70.4	64.3	69.2		69.6	*	70.4	59.3	27

NUMBER TESTED IN GRADE 8													
2012		8	15	21	24	11	22		16	8	24	451	
2013	1	10	19	31	31	10	26		19	12	31	516	
2014		5	20	24	27	14	26		23	4	27	479	

NUMBER UNSATISFACTORY (Level 1)

Grade	Year	White	African Amer	Hispanic	Econ Disadv	Special Educ	LEP	At Risk	Migrant	Male	Female	All	District	Number Tested (All Students)
8	2012		2	9	11	12	7	12		6	6	12	215	24
	2013	*	4	10	15	15	4	13		7	8	15	209	31
	2014		*	6	7	8	5	8		7	*	8	195	27

NUMBER TESTED IN GRADE8													
2012		8	15	21	24	11	22		16	8	24	451	
2013	1	10	19	31	31	10	26		19	12	31	516	
2014		5	20	24	27	14	26		23	4	27	479	

PERCENTAGE ADVANCED (Level 3)

Grade	Year	White	African Amer	Hispanic	Econ Disadv	Special Educ	LEP	At Risk	Migrant	Male	Female	All	District	Number Tested (All Students)
8	2012		0.0	0.0	0.0	0.0	0.0	0.0		0.0	0.0	0.0	2.9	24
	2013	*	0.0	0.0	0.0	0.0	0.0	0.0		0.0	0.0	0.0	1.9	31
	2014		*	0.0	0.0	0.0	0.0	0.0		0.0	*	0.0	3.5	27

NUMBER TESTED IN GRADE 8													
2012		8	15	21	24	11	22		16	8	24	451	
2013	1	10	19	31	31	10	26		19	12	31	516	
2014		5	20	24	27	14	26		23	4	27	479	

AVERAGE PERCENTAGE OF ITEMS CORRECT BY REPORTING CATEGORY

Grade	Year	REPORTING CATEGORY			
		1. History	2. Geography and Culture	3. Government and Citizenship	4. Economics, Science, Technology, and Society
8	2012	45.1	50.8	45.4	47.9
	2013	52.2	54.2	45.2	54.3
	2014	53.9	61.1	45.2	58.0

PERCENTAGE SATISFACTORY (Levels 2 and 3)

Test	Year	White	African Amer	Hispanic	Econ Disadv	Special Educ	LEP	At Risk	Migrant	Male	Female	All	District
U.S. HISTORY	2012												
	2013												
	2014	*	*	*	0.0	0.0	*	*		*	*	0.0	0.0
Tests Taken	2012												
	2013												
	2014	1	2	3	8	8	1	5		4	4	8	226

NUMBER UNSATISFACTORY (Level 1)

Test	Year	White	African Amer	Hispanic	Econ Disadv	Special Educ	LEP	At Risk	Migrant	Male	Female	All	District
U.S. HISTORY	2012												
	2013												
	2014	*	*	*	8	8	*	*		*	*	8	226
Tests Taken	2012												
	2013												
	2014	1	2	3	8	8	1	5		4	4	8	226

PERCENTAGE ADVANCED (Level 3)

Test	Year	White	African Amer	Hispanic	Econ Disadv	Special Educ	LEP	At Risk	Migrant	Male	Female	All	District
U.S. HISTORY	2012												
	2013												
	2014	*	*	*	0.0	0.0	*	*		*	*	0.0	0.0
Tests Taken	2012												
	2013												
	2014	1	2	3	8	8	1	5		4	4	8	226

AVERAGE PERCENTAGE OF ITEMS CORRECT BY REPORTING CATEGORY

U.S. HISTORY	1. History	2. Geography and Culture	3. Government and Citizenship	4. Economics, Science, Technology, and Society
2012				
2013				
2014	46.9	38.9	51.6	41.3

PERCENTAGE AT OR ABOVE THE 40th PERCENTILE on the ITBS

Grade	Year	READING TOTAL (**READING PROFILE TOTAL)				
		At Risk	Not At Risk	All	District	Number Tested (All Students)
K**	2012	43.1	56.4	54.6	62.2	337
	2013	30.4	51.6	47.9	60.8	332
	2014	52.3	56.6	55.9	60.7	256
1	2012	33.0	62.0	53.5	55.4	344
	2013	38.0	51.5	48.5	55.0	309
	2014	42.2	40.5	40.9	47.2	296
2	2012	33.3	74.5	48.0	49.8	298
	2013	33.8	70.8	48.6	50.2	327
	2014	18.4	60.7	34.7	44.4	291
K-2	2012	34.7	61.6	52.2	55.8	642
	2013	33.6	54.2	48.2	56.7	968
	2014	32.0	52.3	46.2	53.1	843
# Tested (GR K-2)	2012	346	635	979	21,034	
	2013	381	935	1,300	28,878	
	2014	331	768	1,099	28,063	

Grade	Year	MATHEMATICS TOTAL (**MATHEMATICS)				
		At Risk	Not At Risk	All	District	Number Tested (All Students)
K**	2012	56.8	60.2	58.1	55.1	728
	2013	49.4	58.4	53.1	55.1	697
	2014	56.4	61.0	58.3	55.0	587
1	2012	44.5	53.6	47.5	50.7	773
	2013	42.9	50.0	45.6	52.0	664
	2014	35.9	42.1	38.5	46.0	611
2	2012	50.8	72.4	54.7	57.9	662
	2013	46.6	70.0	50.9	56.2	713
	2014	45.0	69.4	49.7	52.0	575
K-2	2012	50.3	59.8	53.3	54.5	2,163
	2013	46.3	57.5	50.0	54.4	2,074
	2014	45.6	54.7	48.7	51.0	1,773
# Tested (GR K-2)	2012	1,506	660	2,163	40,477	
	2013	1,398	685	2,074	40,966	
	2014	1,163	611	1,773	40,233	

PERCENTAGE AT OR ABOVE THE 40th PERCENTILE

Grade	Year	White	African Amer	Hispanic	Econ Disadv	Special Educ	LEP	At Risk	Migrant	Male	Female	All	District	Number Tested (All Students)
K**	2012	64.7	54.4	54.1	52.9	23.1	34.5	43.1		46.7	62.4	54.6	62.2	337
	2013	47.1	49.3	48.0	47.4	10.0	32.4	30.4		40.9	54.8	47.9	60.8	332
	2014	33.3	45.6	61.0	54.9	30.8	50.0	52.3		55.9	55.9	55.9	60.7	256
1	2012	60.0	54.5	50.9	51.7	21.4	34.8	33.0		48.2	58.5	53.5	55.4	344
	2013	57.1	53.3	45.0	47.8	6.3	29.0	38.0		44.2	53.4	48.5	55.0	309
	2014	27.3	31.6	47.3	39.9	20.0	46.9	42.2		39.3	42.4	40.9	47.2	296
2	2012	76.9	49.0	45.6	46.0	10.5	37.8	33.3		44.0	52.5	48.0	49.8	298
	2013	42.9	45.9	49.4	47.8	4.3	39.5	33.8		42.3	54.9	48.6	50.2	327
	2014	37.5	26.7	39.5	33.9	6.3	20.6	18.4		31.2	38.0	34.7	44.4	291
1-2	2012	67.9	52.1	48.3	49.1	15.2	36.3	33.2		46.2	55.9	50.9	52.7	642
	2013	47.4	49.5	47.5	47.7	6.8	34.2	34.2		42.4	54.4	48.3	55.4	968
	2014	32.1	33.5	49.0	42.3	18.4	38.3	28.9		42.2	44.4	43.3	50.6	843
# Tested (GR K-2)	2012	28	238	329	599	33	91	295		327	315	642	14,095	
	2013	38	410	461	921	59	111	325		490	478	968	21,640	
	2014	28	343	414	795	49	94	287		431	412	843	21,214	

**Kindergarten subscore is Reading Profile Total; no Reading Total subscore available.

NUMBER AT OR ABOVE THE 80th PERCENTILE

Grade	Year	White	African Amer	Hispanic	Econ Disadv	Special Educ	LEP	At Risk	Migrant	Male	Female	All	District	Number Tested (All Students)
K**	2012	6	20	41	61	1	3	5		29	45	74	2,027	337
	2013	4	18	29	50	0	5	5		25	31	56	2,108	332
	2014	0	17	40	63	3	10	15		40	27	67	1,938	256
1	2012	8	32	45	84	0	10	16		39	56	95	1,963	344
	2013	3	35	33	68	0	3	12		30	43	73	2,017	309
	2014	2	19	29	54	1	7	16		27	30	57	1,561	296
2	2012	5	7	14	28	0	4	8		16	16	32	1,017	298
	2013	4	12	20	36	0	4	7		12	27	39	1,045	327
	2014	1	5	9	14	0	0	3		7	9	16	950	291
1-2	2012	13	39	59	112	0	14	24		55	72	127	2,981	642
	2013	11	65	82	154	0	12	24		67	101	168	5,171	968
	2014	3	41	78	131	4	17	34		74	66	140	4,449	843
# Tested (GR K-2)	2012	28	238	329	599	33	91	295		327	315	642	14,095	
	2013	38	410	461	921	59	111	325		490	478	968	21,640	
	2014	28	343	414	795	49	94	287		431	412	843	21,214	

**Kindergarten subscore is Reading Profile Total; no Reading Total subscore available.

PERCENTAGE AT OR ABOVE THE 40th PERCENTILE

Grade	Year	White	African Amer	Hispanic	Econ Disadv	Special Educ	LEP	At Risk	Migrant	Male	Female	All	District	Number Tested (All Students)
K**	2012	61.1	53.5	58.4	57.7	47.8	56.2	56.8		55.9	60.3	58.1	55.1	728
	2013	60.0	58.0	51.8	52.7	17.9	50.1	49.4		50.1	56.3	53.1	55.1	697
	2014	70.0	52.6	58.8	58.6	55.0	56.3	56.4		56.3	60.4	58.3	55.0	587
1	2012	62.5	44.8	47.3	46.6	25.0	46.7	44.5		46.6	48.3	47.5	50.7	773
	2013	62.5	49.6	44.3	45.4	22.2	41.9	42.9		48.4	42.5	45.6	52.0	664
	2014	43.8	30.6	40.0	38.0	10.3	35.5	35.9		39.6	37.3	38.5	46.0	611
2	2012	78.6	44.2	55.9	54.5	20.0	55.3	50.8		55.2	54.1	54.7	57.9	662
	2013	57.1	38.2	53.4	50.4	23.7	54.2	46.6		51.4	50.4	50.9	56.2	713
	2014	77.8	43.6	51.0	50.2	15.0	48.0	45.0		50.7	48.8	49.7	52.0	575
K-2	2012	66.7	47.4	53.7	52.7	28.4	52.4	50.3		52.5	54.1	53.3	54.5	2,163
	2013	59.5	48.8	49.9	49.6	21.5	49.0	46.3		50.0	49.9	50.0	54.4	2,074
	2014	60.0	41.3	50.0	48.8	24.6	46.6	45.6		48.7	48.7	48.7	51.0	1,773
# Tested (GR K-2)	2012	48	352	1,693	2,079	95	1,276	1,506		1,109	1,054	2,163	40,477	
	2013	42	416	1,556	2,009	93	1,180	1,398		1,068	1,006	2,074	40,966	
	2014	35	375	1,297	1,704	69	964	1,163		910	863	1,773	40,233	

**Kindergarten test is Mathematics; no Mathematics Total score available.

NUMBER AT OR ABOVE THE 80th PERCENTILE

Grade	Year	White	African Amer	Hispanic	Econ Disadv	Special Educ	LEP	At Risk	Migrant	Male	Female	All	District	Number Tested (All Students)
K**	2012	6	20	126	146	2	92	94		77	79	156	2,472	728
	2013	4	28	82	113	1	58	60		57	62	119	2,594	697
	2014	1	22	111	141	6	82	86		73	73	146	2,598	587
1	2012	5	17	107	127	2	83	87		63	75	138	2,473	773
	2013	1	33	75	108	0	48	53		55	57	112	2,609	664
	2014	3	11	53	70	0	34	38		38	36	74	2,166	611
2	2012	4	9	74	88	1	55	64		56	36	92	2,843	662
	2013	3	13	85	99	2	70	76		53	54	107	2,626	713
	2014	3	15	51	69	0	30	38		39	34	73	2,408	575
K-2	2012	15	46	307	361	5	230	245		196	190	386	7,788	2,163
	2013	8	74	242	320	3	176	189		165	173	338	7,829	2,074
	2014	7	48	215	280	6	146	162		150	143	293	7,172	1,773
# Tested (GR K-2)	2012	48	352	1,693	2,079	95	1,276	1,506		1,109	1,054	2,163	40,477	
	2013	42	416	1,556	2,009	93	1,180	1,398		1,068	1,006	2,074	40,966	
	2014	35	375	1,297	1,704	69	964	1,163		910	863	1,773	40,233	

**Kindergarten test is Mathematics; no Mathematics Total score available.

PERCENTAGE AT OR ABOVE THE 40th PERCENTILE

Grade	Year	White	African Amer	Hispanic	Econ Disadv	Special Educ	LEP	At Risk	Migrant	Male	Female	All	District	Number Tested (All Students)
1	2012	62.5	53.4	61.8	60.0	40.7	63.1	60.8		57.3	64.0	60.7	62.5	768
	2013	62.5	58.7	59.6	58.9	42.3	59.1	58.8		61.7	56.1	59.0	63.6	664
	2014	50.0	38.9	57.4	53.2	28.6	56.5	54.6		54.5	52.0	53.3	58.6	625
2	2012	64.3	49.0	66.2	63.3	41.0	68.7	61.9		64.6	62.0	63.4	63.6	661
	2013	42.9	42.6	61.2	57.3	29.7	64.9	55.7		56.7	58.8	57.7	60.6	712
	2014	55.6	52.5	63.3	60.8	38.9	64.6	59.4		64.1	57.5	60.8	59.2	577
1-2	2012	63.3	51.5	63.8	61.5	40.9	65.7	61.4		60.8	63.1	61.9	63.0	1,429
	2013	50.0	50.7	60.4	58.1	34.9	62.2	57.0		59.2	57.5	58.4	62.1	1,376
	2014	52.0	45.0	60.3	56.9	32.6	60.5	57.3		59.1	54.7	56.9	58.9	1,202
# Tested (GR 1-2)	2012	30	237	1,114	1,380	66	860	1,066		735	694	1,429	26,880	
	2013	22	274	1,048	1,340	63	801	996		703	673	1,376	27,003	
	2014	25	262	872	1,157	46	658	838		613	589	1,202	26,955	

NUMBER AT OR ABOVE THE 80th PERCENTILE

Grade	Year	White	African Amer	Hispanic	Econ Disadv	Special Educ	LEP	At Risk	Migrant	Male	Female	All	District	Number Tested (All Students)
1	2012	3	37	178	218	6	145	156		115	116	231	4,060	768
	2013	3	43	146	190	5	105	114		107	89	196	4,150	664
	2014	3	15	111	131	1	85	89		81	58	139	3,708	625
2	2012	3	17	153	175	6	134	150		99	82	181	3,820	661
	2013	3	16	144	167	5	124	136		82	90	172	3,436	712
	2014	3	16	97	114	0	68	84		60	59	119	3,288	577
1-2	2012	6	54	331	393	12	279	306		214	198	412	7,880	1,429
	2013	6	59	290	357	10	229	250		189	179	368	7,586	1,376
	2014	6	31	208	245	1	153	173		141	117	258	6,996	1,202
# Tested (GR 1-2)	2012	30	237	1,114	1,380	66	860	1,066		735	694	1,429	26,880	
	2013	22	274	1,048	1,340	63	801	996		703	673	1,376	27,003	
	2014	25	262	872	1,157	46	658	838		613	589	1,202	26,955	

PERCENTAGE AT OR ABOVE THE 40th PERCENTILE

Grade	Year	White	African Amer	Hispanic	Econ Disadv	Special Educ	LEP	At Risk	Migrant	Male	Female	All	District	Number Tested (All Students)
K	2012	*		95.1	95.3	80.0	95.2	95.0		93.3	97.1	95.1	89.9	367
	2013	*		96.3	96.3	87.5	96.6	96.3		96.0	96.7	96.3	89.7	328
	2014			90.7	91.3	83.3	90.6	90.6		89.4	92.0	90.7	88.6	291
1	2012	*		91.3	91.3	60.0	92.3	92.3		88.2	94.5	91.4	89.2	429
	2013	*		89.6	89.6	60.0	89.9	89.9		86.3	93.6	89.7	87.6	339
	2014	*		84.3	84.8	57.1	84.3	84.3		81.2	88.4	84.4	84.6	270
2	2012			90.8	90.7	55.0	90.9	90.9		87.0	95.2	90.8	93.3	357
	2013			93.3	93.2	64.3	93.3	93.3		91.2	95.3	93.3	93.6	387
	2014	*		91.1	91.7	50.0	91.2	91.2		87.9	94.8	91.2	91.8	283
K-2	2012	*		92.3	92.3	62.2	92.8	92.7		89.4	95.5	92.4	90.8	1,153
	2013	*		93.0	93.0	68.8	93.2	93.1		91.1	95.2	93.1	90.3	1,054
	2014	*		88.8	89.3	63.2	88.8	88.8		86.1	91.9	88.9	88.2	844
# Tested (GR K-2)	2012	5		1,148	1,135	45	1,123	1,127		596	557	1,153	18,911	
	2013	4		1,050	1,044	32	1,043	1,045		553	501	1,054	18,629	
	2014	3		840	826	19	838	838		439	405	844	18,008	

NUMBER AT OR ABOVE THE 80th PERCENTILE

Grade	Year	White	African Amer	Hispanic	Econ Disadv	Special Educ	LEP	At Risk	Migrant	Male	Female	All	District	Number Tested (All Students)
K	2012	*		261	258	4	256	256		129	133	262	3,679	367
	2013	*		216	216	1	213	213		111	108	219	3,798	328
	2014			194	192	3	192	192		90	105	195	3,313	291
1	2012	*		182	181	1	181	181		77	107	184	2,437	429
	2013	*		126	127	0	126	126		54	73	127	2,394	339
	2014	*		71	69	0	69	69		35	36	71	2,123	270
2	2012			166	165	2	162	161		80	86	166	2,934	357
	2013			177	175	4	177	177		75	102	177	2,899	387
	2014	*		95	94	0	96	96		49	47	96	2,596	283
K-2	2012	*		609	604	7	599	598		286	326	612	9,050	1,153
	2013	*		519	518	5	516	516		240	283	523	9,091	1,054
	2014	*		360	355	3	357	357		174	188	362	8,032	844
# Tested (GR K-2)	2012	5		1,148	1,135	45	1,123	1,127		596	557	1,153	18,911	
	2013	4		1,050	1,044	32	1,043	1,045		553	501	1,054	18,629	
	2014	3		840	826	19	838	838		439	405	844	18,008	

PERCENTAGE DEMONSTRATING IMPROVEMENT

Grade	Level 1 in 2013		Level 2 in 2013		Level 3 in 2013		Levels 1-3 in 2013	
	Number Tested Both Years	Percentage Improved in 2014	Number Tested Both Years	Percentage Improved in 2014	Number Tested Both Years	Percentage Improved in 2014	Number Tested Both Years	Percentage Improved in 2014
5	8	25.0	2	*	0		10	30.0
6	11	54.5	19	47.4	0		30	50.0
7	9	44.4	22	50.0	0		31	48.4
8	4	*	21	57.1	0		25	52.0
9	20	45.0	12	66.7	0		32	53.1
10	12	58.3	15	46.7	0		27	51.9
11	3	*	9	22.2	0		12	25.0
12	4	*	15	40.0	0		19	47.4
ALL	71	46.5	115	48.7	0		186	47.8

PERFORMANCE IN 2014

Grade 2013-14 (N Rated)	Domain:	Listening		Speaking		Writing		Reading		Composite	
	2014 Level	N	%	N	%	N	%	N	%	N	%
KN (322)	Beginning	233	72.6	262	81.6	296	91.9	285	88.5	282	87.9
	Intermediate	61	19.0	41	12.8	21	6.5	24	7.5	29	9.0
	Advanced	16	5.0	11	3.4	4	1.2	11	3.4	9	2.8
	Advanced High	11	3.4	7	2.2	1	0.3	2	0.6	1	0.3
1 (338)	Beginning	117	34.6	181	53.6	233	68.9	200	59.2	194	57.4
	Intermediate	127	37.6	86	25.4	74	21.9	71	21.0	82	24.3
	Advanced	70	20.7	54	16.0	22	6.5	53	15.7	48	14.2
	Advanced High	24	7.1	17	5.0	9	2.7	14	4.1	14	4.1
2 (337)	Beginning	53	16.4	69	21.3	87	26.9	104	30.9	76	23.5
	Intermediate	89	27.5	134	41.4	158	48.8	141	41.8	151	46.6
	Advanced	142	43.8	95	29.3	65	20.1	69	20.5	81	25.0
	Advanced High	40	12.3	26	8.0	14	4.3	23	6.8	16	4.9
3 (409)	Beginning	11	2.8	23	5.8	73	18.5	127	31.1	57	14.5
	Intermediate	77	19.5	105	26.6	147	37.3	134	32.8	155	39.4
	Advanced	158	40.0	167	42.4	115	29.2	90	22.0	123	31.3
	Advanced High	149	37.7	99	25.1	59	15.0	58	14.2	58	14.8
4 (329)	Beginning	8	2.5	11	3.5	22	6.9	50	15.3	17	5.4
	Intermediate	40	12.5	68	21.4	95	30.0	116	35.6	83	26.3
	Advanced	100	31.3	114	35.8	138	43.5	120	36.8	149	47.3
	Advanced High	171	53.6	125	39.3	62	19.6	40	12.3	66	21.0

**PROGRESSION FROM
2013 TO 2014**

Number Rated Both Years N (%) Progressed	2014 Level	2013 Level			
		Beg	Int	Adv	Adv High
-	Beginning	-			
	Intermediate	-	-		
	Advanced	-	-	-	
	Advanced High	-	-	-	
326 133 (40.8%)	Beginning	185			
	Intermediate	74	6		
	Advanced	40	6	2	
	Advanced High	6	2	5	
307 153 (49.8%)	Beginning	69			
	Intermediate	82	62		
	Advanced	17	39	23	
	Advanced High	1	3	11	
373 136 (36.5%)	Beginning	48			
	Intermediate	37	115		
	Advanced	0	45	74	
	Advanced High	0	1	53	
298 120 (40.3%)	Beginning	12			
	Intermediate	16	62		
	Advanced	4	36	104	
	Advanced High	0	1	63	

PERFORMANCE IN 2014

Grade 2013-14 (N Rated)	Domain:	Listening		Speaking		Writing		Reading		Composite	
	2014 Level	N	%	N	%	N	%	N	%	N	%
5 (342)	Beginning	6	1.8	12	3.6	23	6.8	28	8.2	11	3.3
	Intermediate	50	14.8	65	19.2	97	28.7	85	24.9	71	21.0
	Advanced	96	28.4	92	27.2	116	34.3	132	38.6	142	42.0
	Advanced High	186	55.0	169	50.0	102	30.2	97	28.4	114	33.7
6 (248)	Beginning	12	4.9	11	4.5	23	9.3	31	12.9	9	3.8
	Intermediate	22	8.9	32	13.0	62	25.2	80	33.3	62	26.1
	Advanced	76	30.8	85	34.4	103	41.9	95	39.6	111	46.6
	Advanced High	137	55.5	119	48.2	58	23.6	34	14.2	56	23.5
7 (222)	Beginning	6	2.7	12	5.4	21	9.6	21	9.8	6	2.8
	Intermediate	39	17.6	54	24.3	86	39.3	88	41.1	75	35.4
	Advanced	146	65.8	131	59.0	90	41.1	76	35.5	102	48.1
	Advanced High	31	14.0	25	11.3	22	10.0	29	13.6	29	13.7
8 (186)	Beginning	6	3.2	6	3.2	7	3.8	25	13.7	6	3.3
	Intermediate	21	11.3	33	17.7	34	18.7	64	35.0	32	17.8
	Advanced	52	28.0	53	28.5	70	38.5	77	42.1	99	55.0
	Advanced High	107	57.5	94	50.5	71	39.0	17	9.3	43	23.9
9 (102)	Beginning	7	6.9	8	7.8	8	7.8	13	13.0	6	6.0
	Intermediate	24	23.5	26	25.5	31	30.4	34	34.0	26	26.0
	Advanced	39	38.2	37	36.3	47	46.1	43	43.0	50	50.0
	Advanced High	32	31.4	31	30.4	16	15.7	10	10.0	18	18.0

**PROGRESSION FROM
2013 TO 2014**


Number Rated Both Years N (%) Progressed	2014 Level	2013 Level			
		Beg	Int	Adv	Adv High
325 169 (52.0%)	Beginning	6			
	Intermediate	15	54		
	Advanced	4	38	96	
	Advanced High	1	5	106	
221 74 (33.5%)	Beginning	4			
	Intermediate	8	50		
	Advanced	0	13	93	
	Advanced High	0	1	52	
193 40 (20.7%)	Beginning	5			
	Intermediate	3	68		
	Advanced	0	11	80	
	Advanced High	0	0	26	
165 47 (28.5%)	Beginning	3			
	Intermediate	0	29		
	Advanced	0	8	86	
	Advanced High	0	0	39	
81 24 (29.6%)	Beginning	3			
	Intermediate	3	17		
	Advanced	0	5	37	
	Advanced High	0	1	15	

PERFORMANCE IN 2014

Grade 2013-14 (N Rated)	Domain:	Listening		Speaking		Writing		Reading		Composite	
	2014 Level	N	%	N	%	N	%	N	%	N	%
10 (92)	Beginning	1	1.1	2	2.2	1	1.1	12	13.8	2	2.3
	Intermediate	5	5.5	9	9.9	10	11.0	21	24.1	12	14.0
	Advanced	14	15.4	17	18.7	32	35.2	45	51.7	34	39.5
	Advanced High	71	78.0	63	69.2	48	52.7	9	10.3	38	44.2
11 (65)	Beginning	0	0.0	0	0.0	1	1.5	7	11.1	1	1.6
	Intermediate	2	3.1	5	7.7	6	9.2	13	20.6	4	6.3
	Advanced	9	13.8	9	13.8	13	20.0	30	47.6	25	39.7
	Advanced High	54	83.1	51	78.5	45	69.2	13	20.6	33	52.4
12 (50)	Beginning	0	0.0	0	0.0	0	0.0	4	8.2	0	0.0
	Intermediate	2	4.1	4	8.2	10	20.4	21	42.9	9	18.8
	Advanced	11	22.4	14	28.6	15	30.6	18	36.7	22	45.8
	Advanced High	36	73.5	31	63.3	24	49.0	6	12.2	17	35.4
ALL (3,042)	Beginning	460	15.3	597	19.9	795	26.6	907	30.1	667	22.6
	Intermediate	559	18.7	662	22.1	831	27.8	892	29.6	791	26.8
	Advanced	929	31.0	879	29.3	830	27.8	859	28.5	995	33.7
	Advanced High	1,049	35.0	857	28.6	531	17.8	352	11.7	503	17.0

**PROGRESSION FROM
2013 TO 2014**

Number Rated Both Years N (%) Progressed	2014 Level	2013 Level			
		Beg	Int	Adv	Adv High
74 39 (52.7%)	Beginning	1			
	Intermediate	0	10		
	Advanced	1	4	24	
	Advanced High	0	0	34	
58 37 (63.8%)	Beginning	0			
	Intermediate	0	4		
	Advanced	1	5	17	
	Advanced High	0	0	31	
41 20 (48.8%)	Beginning	0			
	Intermediate	1	7		
	Advanced	0	7	14	
	Advanced High	0	0	12	
2,463 993 (40.3%)	Beginning	336			
	Intermediate	240	484		
	Advanced	67	217	650	
	Advanced High	8	14	447	

 Indicates students who progressed at least one level from 2013 to 2014.