

DATA PACKET

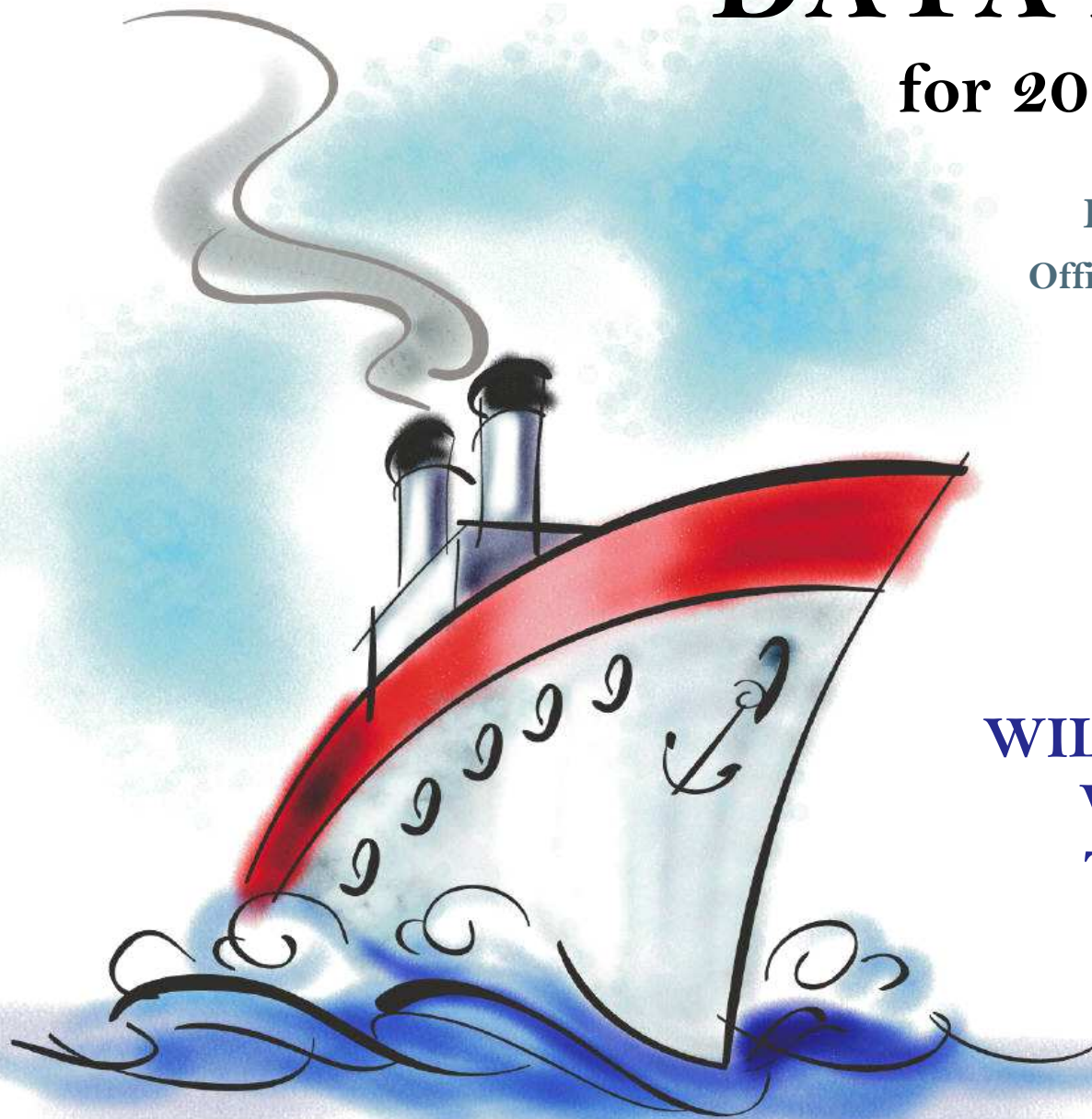
for 2014-15 planning

Evaluation & Assessment
Office of Institutional Research
<http://mydata.dallasisd.org>
OIR@dallasisd.org

July 31, 2014

School Number 217

**WILLIAM B. TRAVIS
VANGUARD FOR
TALENTED AND
GIFTED**



Dallas Independent School District

2. Contents Table of Contents

STUDENTS AND STAFF

5. Summary Summary of Student and Teacher Statistics

7. Enroll (2) Enrollment Statistics by Select Student Group

9. Teachers Teacher Statistics

STAAR (English)

10. Reading (3-8) STAAR 3-8 Reading in English

18. Math (3-8) STAAR 3-8 Mathematics in English

ENGLISH PROFICIENCY

26. TELPAS Texas English Language Proficiency Assessment System

LOCAL ASSESSMENT

27. ACP Assessments of Course Performance

3. Notes Notes and Data Descriptions

6. Enroll (1) Enrollment Statistics by Ethnicity

8. Attendance Student Attendance Statistics

14. Writing (3-8) STAAR 3-8 Writing in English

22. Science (3-8) STAAR 3-8 Science in English

2013-14 SCHOOL SUMMARY

- Student percentages are computed as the percentage of total student enrollment.
- Additional statistics are available in ENROLLMENT and TEACHER reports.
- Race/ethnic categories are based on the newest federal standards for ethnicity and race reporting, though some categories have been combined because of small group sizes. Students reporting their ethnicity as “Hispanic” are not counted in any race category.
- “Economically disadvantaged” students are those who qualify for free or reduced-price lunch through the federal government's program.
- Teacher demographics and assignments are from the district's Public Education Information Management System (PEIMS) submission to the TEA.

ENROLLMENT

- Statistics are based on the school's enrollment at the end of the fifth six-weeks grading period.
- “Economically disadvantaged” students are those receiving free or reduced-price lunches.
- “New” students were new to the district in 2013-14. They are counted as new if not enrolled in a district campus before the last day of the 2012-13 school year.
- The “retention rate” is the percentage of students in the same grade at the end of the fifth six-weeks grading period for both 2012-13 and 2013-14.

ATTENDANCE

- Statistics are based on student attendance through the end of the sixth six-weeks grading period (the end of the school year).
- “Average daily membership” is the total number of school days students were ENROLLED divided by the number of school days in the year.
- The “average daily attendance” number (N) is the total number of school days students were IN ATTENDANCE divided by the number of school days in the year. The “average daily attendance” percentage (%) is the average attendance rate. For each student, the number of days attended is divided by the number of days enrolled. This rate is then averaged across students.
- The number (N) of “yearly transactions” is the total number of transfer and withdrawal transactions in the school year. The percentage (%) is the number of transactions divided by “average daily membership,” which gives (on average) the percentage of the membership associated with a transaction.
- “Continuously enrolled” students are enrolled and in attendance for a minimum number of instructional days in at least one course at the school between the beginning of the school year and the first day of the main STAAR testing period. The minimum number varies depending on the school year's calendar, but is typically around 130 days.
- The “stability rate” is the number of continuously enrolled students divided by “average daily membership.”

TEACHERS

- Teacher demographics and assignments are from the district's Public Education Information Management System (PEIMS) submission to the TEA.
- Teacher absences counted towards the average DO NOT include vacation days (coded as VAC in personnel database).
- Retention rate for a school year is computed with numerator “# of teachers assigned to the school both that year and the year prior” and denominator “# of teachers assigned to the school for the prior year.” That is, the retention rate is the percentage of the prior year's teachers who continued at the school.

STAAR, STAAR L, and STAAR M

- Cells marked with an asterisk (*) indicate five or fewer students were tested. Blank cells indicate no students were tested.
- Student group assignments are from the district's Public Education Information Management System (PEIMS) submission to the TEA.
- STAAR statistics are based on results from standard STAAR only. STAAR L and STAAR M statistics are computed separately, following TEA reporting practice.
- “Percentage Satisfactory” is the percentage of students achieving Level 2 (Satisfactory) or Level 3 (Advanced).
- Statistics by reporting category are averages for all students (across student groups and genders).
- An “average percentage correct” is computed as follows: for each student, divide the number of items correctly answered by the total number of items in the test section, then average the resulting percentages across all students. For short answers on EOC English tests, an “average rating” is presented; STAAR EOC short answers are rated on a scale of 0 to 3. For written compositions on writing tests, “average score points” is presented. Additional details provided in report footnotes.
- Reading and mathematics statistics for SSI grades 5 and 8 are based on scores cumulative through the second administration.

TELPAS

- Students are counted as having tested if any one of the four domains is rated. Because a TELPAS composite rating is not assigned to a student unless all four domains are rated, the number of TELPAS composite ratings may be smaller than the number tested.
- If a student's composite rating did not increase at least one level from 2013 to 2014, the TEA did not report the 2013 composite rating.
- If a student is rated as advanced high in 2014, the TEA does not differentiate between the advanced and advanced high levels from 2013.

ACP

- Cells marked with an asterisk (*) indicate five or fewer students were tested. Blank cells indicate no students were tested.
- The ACPs are semester exams administered in grades K-12. Not all courses have ACPs. In MIDDLE and HIGH school, ACP results account for a portion of students' final semester grades (10% and 15% respectively). “Average course mark (no ACP)” is computed from semester grades before factoring in ACP scores. In ELEMENTARY school, ACP results account for 5% of students' semester grades for core courses; course-grade statistics are not reported in data packets for elementary grades.
- Raw scores on the ACPs (percentage of items correct) are scaled each year to maintain similar annual passing rates for the district.
- A scale score of at least 70 percent is required to pass an ACP. A course mark of at least 70 percent is required to pass a course.
- Statistics are computed separately for Semester 1 and Semester 2 tests; time of administration during the school year is not relevant. Results from tests written for different school years are not combined.

STUDENT ENROLLMENT

Grade	Enrollment
4	66
5	64
ALL	130

STUDENT AND TEACHER RACE/ETHNICITY

Ethnicity/Race	Students		Teachers	
	Number	Percent	Number	Percent
Black/African American	11	8.5	2	18.2
American Indian/Alaska Native	0	0.0	*	*
Asian/Hawaiian/Pacific Islander	5	3.8	*	*
Hispanic	29	22.3	0	0.0
White	83	63.8	8	72.7
Multiple	2	1.5	1	9.1
Other* (teachers only)	—	—	0	0.0
Not reported (students only)	0	0.0	—	—

*For teachers, "Other" category includes American Indian/Alaska Native and Asian/Hawaiian/Pacific Islander.

SELECT STUDENT GROUP ENROLLMENT

Group	Number	Percent
At-Risk	12	9.2
Economically disadvantaged	28	21.5
Limited English proficient (LEP)	7	5.4
Special education	3	2.3
Talented and Gifted (TAG)	130	100.0

Grade	Year	Enrollment	African American		American Indian		Asian		Hispanic		White		Multiple category	
			N	%	N	%	N	%	N	%	N	%	N	%
4	2012	64	9	14.1	0	0.0	5	7.8	17	26.6	31	48.4	2	3.1
	2013	65	10	15.4	0	0.0	3	4.6	14	21.5	36	55.4	2	3.1
	2014	66	2	3.0	0	0.0	2	3.0	13	19.7	49	74.2	0	0.0
5	2012	66	5	7.6	0	0.0	3	4.5	19	28.8	36	54.5	3	4.5
	2013	66	9	13.6	0	0.0	5	7.6	19	28.8	30	45.5	3	4.5
	2014	64	9	14.1	0	0.0	3	4.7	16	25.0	34	53.1	2	3.1
4-6	2012	130	14	10.8	0	0.0	8	6.2	36	27.7	67	51.5	5	3.8
	2013	131	19	14.5	0	0.0	8	6.1	33	25.2	66	50.4	5	3.8
	2014	130	11	8.5	0	0.0	5	3.8	29	22.3	83	63.8	2	1.5

Grade	Year	Enrollment	Economically Disadvantaged		LEP		Special Education		At Risk		TAG		New (to District)		Gender		Retention Rate (%)
			N	%	N	%	N	%	N	%	N	%	N	%	% Male	% Female	
4	2012	64	21	32.8	4	6.3	1	1.6	4	6.3	64	100.0	14	21.9	56.3	43.8	0.0
	2013	65	21	32.3	4	6.2	2	3.1	5	7.7	65	100.0	5	7.7	36.9	63.1	0.0
	2014	66	10	15.2	4	6.1	0	0.0	7	10.6	66	100.0	9	13.6	43.9	56.1	0.0
5	2012	66	13	19.7	0	0.0	0	0.0	1	1.5	66	100.0	1	1.5	42.4	57.6	0.0
	2013	66	17	25.8	1	1.5	1	1.5	5	7.6	66	100.0	1	1.5	56.1	43.9	0.0
	2014	64	18	28.1	3	4.7	3	4.7	5	7.8	64	100.0	1	1.6	35.9	64.1	0.0
4-6	2012	130	34	26.2	4	3.1	1	0.8	5	3.8	130	100.0	15	11.5	49.2	50.8	0.0
	2013	131	38	29.0	5	3.8	3	2.3	10	7.6	131	100.0	6	4.6	46.6	53.4	0.0
	2014	130	28	21.5	7	5.4	3	2.3	12	9.2	130	100.0	10	7.7	40.0	60.0	0.0

Grade	Year	Average Daily Membership		Average Daily Attendance				Yearly Transactions			Continuously Enrolled		Stability Rate	
		N	District	N	%	District N	District %	N	%	District %	N	District	%	District
4	2012	65	12,493	64	98.6	12,139	97.2	1	1.5	16.6	64	11,218	99.2	89.8
	2013	65	12,406	64	97.9	12,029	97.0	1	1.5	16.5	64	11,339	97.9	91.4
	2014	67	12,543	66	98.4	12,180	97.1	0	0.0	16.3	67	11,075	100.0	88.3
5	2012	66	12,562	65	98.6	12,220	97.3	0	0.0	5.3	65	11,364	99.1	90.5
	2013	66	12,053	65	98.7	11,696	97.0	0	0.0	6.2	66	11,075	100.0	91.9
	2014	64	12,130	63	98.4	11,795	97.2	0	0.0	5.4	64	10,790	100.0	89.0
4-6	2012	130	35,738	128	98.6	34,675	97.0	1	0.8	12.9	129	32,002	99.1	89.5
	2013	131	35,921	129	98.3	34,787	96.8	1	0.8	14.5	130	32,734	99.0	91.1
	2014	131	35,481	129	98.4	34,387	96.9	0	0.0	13.7	131	31,419	100.0	88.6

Teachers: 11

DISTRIBUTIONS

Ethnicity/Race	Number	Percentage
African American	2	18.2
Hispanic	0	0.0
White	8	72.7
Multiple	1	9.1
Other	0	0.0

Gender	Number	Percentage
Female	5	45.5
Male	6	54.5

ATTENDANCE / RETENTION

	Average Absences	Retention Rate
2011-12	4.5	—
2012-13	5.1	90.9
2013-14	7.2	100.0

YEARS EXPERIENCE

Years	Number	Percentage
Beginning (0)	0	0.0
1	0	0.0
2	0	0.0
3	1	9.1
4	0	0.0
5	0	0.0
1-3	1	9.1
More than 3	10	90.9
1 - 5	1	9.1
6 - 10	2	18.2
11 - 20	2	18.2
More than 20	6	54.5

NOTE: Absence statistics for 2008-09 and 2009-10 include all teachers at both middle and elementary schools.

PERCENTAGE SATISFACTORY (Levels 2 or 3)

Grade	Year	White	African Amer	Hispanic	Econ Disadv	Special Educ	LEP	At Risk	Migrant	Male	Female	All	District	Number Tested (All Students)
4	2012	100.0	100.0	100.0	100.0	*	*	*		100.0	100.0	100.0	64.3	64
	2013	100.0	100.0	100.0	100.0	*	*	*	*	100.0	100.0	100.0	62.3	65
	2014	100.0	*	100.0	100.0		*	100.0		100.0	100.0	100.0	59.4	67
5	2012	100.0	*	100.0	100.0					100.0	100.0	100.0	68.0	66
	2013	100.0	100.0	100.0	100.0	*	*	*		100.0	100.0	100.0	81.5	66
	2014	100.0	100.0	100.0	100.0	*	*	*	*	100.0	100.0	100.0	78.5	63
3-5	2012	100.0	100.0	100.0	100.0	*	*	*		100.0	100.0	100.0	65.5	130
	2013	100.0	100.0	100.0	100.0	*	100.0	100.0	*	100.0	100.0	100.0	71.1	131
	2014	100.0	100.0	100.0	100.0	*	100.0	100.0	*	100.0	100.0	100.0	66.7	130

NUMBER TESTED IN GRADES 3-5													
2012	67	14	36	31	1	4	4		64	66	130	22,173	
2013	66	19	33	38	3	9	9	1	61	70	131	21,619	
2014	83	11	29	26	1	7	10	1	52	78	130	21,304	

NUMBER UNSATISFACTORY (Level 1)

Grade	Year	White	African Amer	Hispanic	Econ Disadv	Special Educ	LEP	At Risk	Migrant	Male	Female	All	District	Number Tested (All Students)
4	2012	0	0	0	0	*	*	*		0	0	0	2,529	64
	2013	0	0	0	0	*	*	*	*	0	0	0	2,581	65
	2014	0	*	0	0		*	0		0	0	0	2,858	67
5	2012	0	*	0	0					0	0	0	2,665	66
	2013	0	0	0	0	*	*	*		0	0	0	1,484	66
	2014	0	0	0	0	*	*	*	*	0	0	0	1,582	63
3-5	2012	0	0	0	0	*	*	*		0	0	0	7,660	130
	2013	0	0	0	0	*	0	0	*	0	0	0	6,246	131
	2014	0	0	0	0	*	0	0	*	0	0	0	7,089	130

NUMBER TESTED IN GRADES 3-5													
2012	67	14	36	31	1	4	4			64	66	130	22,173
2013	66	19	33	38	3	9	9	1		61	70	131	21,619
2014	83	11	29	26	1	7	10	1		52	78	130	21,304

PERCENTAGE ADVANCED (Level 3)

Grade	Year	White	African Amer	Hispanic	Econ Disadv	Special Educ	LEP	At Risk	Migrant	Male	Female	All	District	Number Tested (All Students)
4	2012	83.9	66.7	58.8	57.9	*	*	*		72.2	78.6	75.0	11.2	64
	2013	91.7	50.0	64.3	47.6	*	*	*	*	75.0	82.9	80.0	13.5	65
	2014	90.0	*	69.2	71.4		*	66.7		83.3	89.2	86.6	12.0	67
5	2012	75.0	*	73.7	91.7					67.9	76.3	72.7	11.1	66
	2013	70.0	33.3	84.2	64.7	*	*	*		64.9	75.9	69.7	13.3	66
	2014	87.9	55.6	56.3	42.1	*	*	*	*	63.6	82.9	76.2	11.5	63
3-5	2012	79.1	64.3	66.7	71.0	*	*	*		70.3	77.3	73.8	11.6	130
	2013	81.8	42.1	75.8	55.3	*	66.7	66.7	*	68.9	80.0	74.8	13.5	131
	2014	89.2	63.6	62.1	50.0	*	57.1	50.0	*	75.0	85.9	81.5	11.1	130

NUMBER TESTED IN GRADE 3-5													
2012	67	14	36	31	1	4	4		64	66	130	22,173	
2013	66	19	33	38	3	9	9	1	61	70	131	21,619	
2014	83	11	29	26	1	7	10	1	52	78	130	21,304	

AVERAGE PERCENTAGE OF ITEMS CORRECT BY REPORTING CATEGORY

Grade	Year	REPORTING CATEGORY		
		1. Understanding Across Genres (GR 3-5) 1. Understanding/Analysis Across Genres (GR 6-8)	2. Understanding/Analysis of Literary Texts	3. Understanding/Analysis of Informational Texts
4	2012	90.6	88.4	87.6
	2013	91.7	86.8	87.8
	2014	92.1	91.3	90.0
5	2012	88.9	88.6	92.9
	2013	92.3	88.3	88.8
	2014	93.2	89.7	89.7
3-5	2012	89.8	88.5	90.3
	2013	92.0	87.5	88.3
	2014	92.6	90.5	89.9

PERCENTAGE SATISFACTORY (Levels 2 or 3)

Grade	Year	White	African Amer	Hispanic	Econ Disadv	Special Educ	LEP	At Risk	Migrant	Male	Female	All	District	Number Tested (All Students)
4	2012	100.0	100.0	100.0	100.0	*	*	*		100.0	100.0	100.0	60.6	64
	2013	100.0	100.0	100.0	100.0	*	*	*	*	100.0	100.0	100.0	63.9	65
	2014	100.0	*	100.0	100.0		*	100.0		100.0	100.0	100.0	61.9	67

NUMBER TESTED IN GRADE 4													
2012	31	9	17	19	1	4	4			36	28	64	7,039
2013	36	10	14	21	2	4	4	1		24	41	65	6,771
2014	50	2	13	7		4	6			30	37	67	7,022

NUMBER UNSATISFACTORY (Level 1)

Grade	Year	White	African Amer	Hispanic	Econ Disadv	Special Educ	LEP	At Risk	Migrant	Male	Female	All	District	Number Tested (All Students)
4	2012	0	0	0	0	*	*	*		0	0	0	2,772	64
	2013	0	0	0	0	*	*	*	*	0	0	0	2,442	65
	2014	0	*	0	0		*	0		0	0	0	2,675	67

NUMBER TESTED IN GRADE 4													
2012	31	9	17	19	1	4	4			36	28	64	7,039
2013	36	10	14	21	2	4	4	1		24	41	65	6,771
2014	50	2	13	7		4	6			30	37	67	7,022

PERCENTAGE ADVANCED (Level 3)

Grade	Year	White	African Amer	Hispanic	Econ Disadv	Special Educ	LEP	At Risk	Migrant	Male	Female	All	District	Number Tested (All Students)
4	2012	80.6	33.3	41.2	42.1	*	*	*		52.8	71.4	60.9	5.1	64
	2013	80.6	40.0	28.6	23.8	*	*	*	*	62.5	63.4	63.1	4.7	65
	2014	76.0	*	30.8	42.9		*	33.3		53.3	75.7	65.7	3.7	67

NUMBER TESTED IN GRADE 4													
2012	31	9	17	19	1	4	4			36	28	64	7,039
2013	36	10	14	21	2	4	4	1		24	41	65	6,771
2014	50	2	13	7		4	6			30	37	67	7,022

AVERAGE PERCENTAGE OF ITEMS CORRECT BY REPORTING CATEGORY

Grade	Year	REPORTING CATEGORY			
		1. Composition ¹ GR 4: Personal Narrative GR 7: Expository	1. Composition ¹ GR 4: Expository GR 7: Personal Narrative	2. Revision	3. Editing
4	2012	3.2	2.7	87.3	87.1
	2013	6.4	5.4	87.0	92.1
	2014	6.5	6.0	92.0	88.4

¹Average score points (range 0-8). A STAAR composition is rated twice on a scale of 1 to 4, and the ratings are summed to determine score points for the composition. Score point scale: 0=Non-scorable; 2=Very Limited; 3=between Very Limited and Basic; 4=Basic; 5=between Basic and Satisfactory; 6=Satisfactory; 7=between Satisfactory and Accomplished; 8=Accomplished

PERCENTAGE SATISFACTORY (Levels 2 or 3)

Grade	Year	White	African Amer	Hispanic	Econ Disadv	Special Educ	LEP	At Risk	Migrant	Male	Female	All	District	Number Tested (All Students)
4	2012	100.0	100.0	94.1	94.7	*	*	*		100.0	96.4	98.4	53.0	64
	2013	97.2	100.0	100.0	100.0	*	*	*	*	95.8	100.0	98.5	57.5	65
	2014	100.0	*	100.0	100.0		*	100.0		100.0	100.0	100.0	59.0	67
5	2012	100.0	*	100.0	100.0			*		100.0	100.0	100.0	64.1	66
	2013	100.0	100.0	100.0	100.0	*	*	*		100.0	100.0	100.0	81.7	66
	2014	100.0	100.0	100.0	100.0	*	*	*	*	100.0	100.0	100.0	81.4	63
3-5	2012	100.0	100.0	97.2	96.8	*	*	100.0		100.0	98.5	99.2	57.5	130
	2013	98.5	100.0	100.0	100.0	*	100.0	100.0	*	98.4	100.0	99.2	65.3	131
	2014	100.0	100.0	100.0	100.0	*	100.0	100.0	*	100.0	100.0	100.0	66.3	130

NUMBER TESTED IN GRADES 3-5													
2012	67	14	36	31	1	4	9		64	66	130	35,372	
2013	66	19	33	38	3	9	9	1	61	70	131	34,686	
2014	83	11	29	26	1	7	10	1	52	78	130	35,222	

NUMBER UNSATISFACTORY (Level 1)

Grade	Year	White	African Amer	Hispanic	Econ Disadv	Special Educ	LEP	At Risk	Migrant	Male	Female	All	District	Number Tested (All Students)
4	2012	0	0	1	1	*	*	*		0	1	1	5,511	64
	2013	1	0	0	0	*	*	*	*	1	0	1	4,919	65
	2014	0	*	0	0		*	0		0	0	0	4,803	67
5	2012	0	*	0	0			*		0	0	0	4,228	66
	2013	0	0	0	0	*	*	*		0	0	0	2,035	66
	2014	0	0	0	0	*	*	*	*	0	0	0	2,088	63
3-5	2012	0	0	1	1	*	*	0		0	1	1	15,026	130
	2013	1	0	0	0	*	0	0	*	1	0	1	12,040	131
	2014	0	0	0	0	*	0	0	*	0	0	0	11,879	130

NUMBER TESTED IN GRADES 3-5													
2012	67	14	36	31	1	4	9		64	66	130	35,372	
2013	66	19	33	38	3	9	9	1	61	70	131	34,686	
2014	83	11	29	26	1	7	10	1	52	78	130	35,222	

PERCENTAGE ADVANCED (Level 3)

Grade	Year	White	African Amer	Hispanic	Econ Disadv	Special Educ	LEP	At Risk	Migrant	Male	Female	All	District	Number Tested (All Students)
4	2012	54.8	44.4	47.1	52.6	*	*	*		63.9	28.6	48.4	6.1	64
	2013	77.8	20.0	35.7	23.8	*	*	*	*	50.0	68.3	61.5	9.5	65
	2014	76.0	*	69.2	57.1		*	66.7		76.7	70.3	73.1	14.0	67
5	2012	75.0	*	52.6	66.7					71.4	65.8	68.2	10.4	66
	2013	63.3	77.8	57.9	58.8	*	*	*		75.7	51.7	65.2	12.8	66
	2014	90.9	55.6	56.3	52.6	*	*	*	*	77.3	78.0	77.8	15.7	63
3-5	2012	65.7	50.0	50.0	58.1	*	*	*		67.2	50.0	58.5	8.1	130
	2013	71.2	47.4	48.5	39.5	*	33.3	33.3	*	65.6	61.4	63.4	10.4	131
	2014	81.9	63.6	62.1	53.8	*	57.1	60.0	*	76.9	74.4	75.4	13.3	130

NUMBER TESTED IN GRADE 3-5													
2012	67	14	36	31	1	4	4			64	66	130	35,372
2013	66	19	33	38	3	9	9	1		61	70	131	34,686
2014	83	11	29	26	1	7	10	1		52	78	130	35,222

AVERAGE PERCENTAGE OF ITEMS CORRECT BY REPORTING CATEGORY

Grade	Year	REPORTING CATEGORY				
		1. Numbers, Operations, and Quantitative Reasoning	2. Patterns, Relationships, and Algebraic Reasoning	3. Geometry and Spatial Reasoning	4. Measurement	5. Probability and Statistics
4	2012	89.8	88.8	89.6	79.7	87.5
	2013	88.9	93.3	87.8	86.7	86.2
	2014	91.0	93.3	92.2	91.6	89.9
5	2012	88.6	88.1	87.2	90.9	91.0
	2013	89.7	88.1	90.3	83.0	85.8
	2014	91.3	90.7	90.2	88.9	88.3
3-5	2012	89.2	88.5	88.4	85.4	89.3
	2013	89.3	90.7	89.0	84.8	86.0
	2014	91.1	92.1	91.2	90.3	89.1

PERCENTAGE SATISFACTORY (Levels 2 or 3)

Grade	Year	White	African Amer	Hispanic	Econ Disadv	Special Educ	LEP	At Risk	Migrant	Male	Female	All	District	Number Tested (All Students)
5	2012	100.0	*	100.0	100.0					100.0	100.0	100.0	58.2	66
	2013	100.0	100.0	94.7	100.0	*	*	*		100.0	96.6	98.5	65.1	66
	2014	100.0	88.9	93.8	89.5	*	*	*	*	95.7	97.6	96.9	61.3	64

NUMBER TESTED IN GRADE 5													
2012	36	5	19	12						28	38	66	10,697
2013	30	9	19	17	1	5	5			37	29	66	10,180
2014	34	9	16	19	1	3	4	1		23	41	64	9,073

NUMBER UNSATISFACTORY (Level 1)

Grade	Year	White	African Amer	Hispanic	Econ Disadv	Special Educ	LEP	At Risk	Migrant	Male	Female	All	District	Number Tested (All Students)
5	2012	0	*	0	0					0	0	0	4476	66
	2013	0	0	1	0	*	*	*		0	1	1	3551	66
	2014	0	1	1	2	*	*	*	*	1	1	2	3511	64

NUMBER TESTED IN GRADE 5													
2012	36	5	19	12						28	38	66	10,697
2013	30	9	19	17	1	5	5			37	29	66	10,180
2014	34	9	16	19	1	3	4	1		23	41	64	9,073

PERCENTAGE ADVANCED (Level 3)

Grade	Year	White	African Amer	Hispanic	Econ Disadv	Special Educ	LEP	At Risk	Migrant	Male	Female	All	District	Number Tested (All Students)
5	2012	63.9	*	36.8	41.7					57.1	50.0	53.0	6.5	66
	2013	60.0	22.2	36.8	23.5	*	*	*		51.4	41.4	47.0	6.6	66
	2014	44.1	11.1	31.3	21.1	*	*	*	*	47.8	26.8	34.4	5.3	64

NUMBER TESTED IN GRADE 5													
2012	36	5	19	12						28	38	66	10,697
2013	30	9	19	17	1	5	5			37	29	66	10,180
2014	34	9	16	19	1	3	4	1		23	41	64	9,073

AVERAGE PERCENTAGE OF ITEMS CORRECT BY REPORTING CATEGORY


Grade	Year	REPORTING CATEGORY			
		1. Matter and Energy	2. Force, Motion, and Energy	3. Earth and Space	4. Organisms and Environments
5	2012	94.7	92.4	87.6	91.8
	2013	91.7	90.6	85.0	84.4
	2014	80.5	85.9	78.5	86.6

PERFORMANCE IN 2014

Grade 2013-14 (N Rated)	Domain:	Listening		Speaking		Writing		Reading		Composite	
	2014 Level	N	%	N	%	N	%	N	%	N	%
ALL (7)	Beginning	0	0.0	0	0.0	0	0.0	0	0.0	0	0.0
	Intermediate	0	0.0	0	0.0	0	0.0	0	0.0	0	0.0
	Advanced	0	0.0	0	0.0	0	0.0	1	14.3	0	0.0
	Advanced High	7	100.0	7	100.0	7	100.0	6	85.7	7	100.0

**PROGRESSION FROM
2013 TO 2014**

Number Rated Both Years N (%) Progressed	2014 Level	2013 Level			
		Beg	Int	Adv	Adv High
7 7 (100.0%)	Beginning	0			
	Intermediate	0	0		
	Advanced	0	0	0	
	Advanced High	0	0	7	

 Indicates students who progressed at least one level from 2013 to 2014.

SEMESTER 1 TESTS

Number Tested	Averages				% Passing		District % Passing	
	% Items Correct	Scale Score	Course Mark	Course Mark (no ACP)	ACP	Course	ACP	Course

GRADE 4 ART

67	74.1	86.6	99.7		100.0	100.0	77.4	99.9
----	------	------	------	--	-------	-------	------	------

GRADE 4 LANGUAGE ARTS

67	82.9	88.6	93.9		100.0	100.0	57.7	91.1
----	------	------	------	--	-------	-------	------	------

GRADE 4 MATHEMATICS

67	80.0	89.1	95.5		100.0	100.0	55.0	89.0
----	------	------	------	--	-------	-------	------	------

GRADE 4 READING

67	84.0	89.3	94.0		98.5	100.0	54.2	89.7
----	------	------	------	--	------	-------	------	------

GRADE 4 SCIENCE

67	85.1	90.1	96.5		100.0	100.0	52.1	96.4
----	------	------	------	--	-------	-------	------	------

GRADE 4 SOCIAL STUDIES

67	74.7	85.1	95.4		98.5	100.0	37.8	95.9
----	------	------	------	--	------	-------	------	------

GRADE 5 LANGUAGE ARTS

65	96.4	96.4	91.8		100.0	100.0	77.2	93.6
----	------	------	------	--	-------	-------	------	------

GRADE 5 MATHEMATICS

65	75.7	86.7	92.7		100.0	100.0	53.7	89.2
----	------	------	------	--	-------	-------	------	------

GRADE 5 MUSIC

65		88.4	97.7		96.9	100.0	66.5	99.9
----	--	------	------	--	------	-------	------	------

GRADE 5 READING

65	90.5	90.5	90.9		100.0	98.4	62.9	90.8
----	------	------	------	--	-------	------	------	------

GRADE 5 SCIENCE

65	76.1	84.1	86.3		95.4	100.0	50.8	94.3
----	------	------	------	--	------	-------	------	------

SEMESTER 2 TESTS

Number Tested	Averages				% Passing		District % Passing	
	% Items Correct	Scale Score	Course Mark	Course Mark (no ACP)	ACP	Course	ACP	Course

GRADE 4 ART

66		82.0	100.0		98.5	100.0	50.6	99.9
----	--	------	-------	--	------	-------	------	------

GRADE 4 LANGUAGE ARTS

66	90.0	91.2	93.8		100.0	100.0	63.8	88.7
----	------	------	------	--	-------	-------	------	------

GRADE 4 MATHEMATICS

66	84.3	90.0	92.4		100.0	100.0	62.3	88.7
----	------	------	------	--	-------	-------	------	------

GRADE 4 READING

66	91.9	92.8	92.8		100.0	100.0	58.4	87.3
----	------	------	------	--	-------	-------	------	------

GRADE 4 SCIENCE

66	90.2	93.3	96.0		100.0	100.0	56.9	94.9
----	------	------	------	--	-------	-------	------	------

GRADE 4 SOCIAL STUDIES

66	77.4	87.0	93.9		100.0	100.0	38.7	94.8
----	------	------	------	--	-------	-------	------	------

GRADE 5 LANGUAGE ARTS

64	91.5	92.5	90.4		100.0	96.9	69.6	94.1
----	------	------	------	--	-------	------	------	------

GRADE 5 MATHEMATICS

64	83.9	90.7	93.1		98.4	100.0	59.7	90.2
----	------	------	------	--	------	-------	------	------

GRADE 5 MUSIC

64		87.0	92.8		100.0	100.0	73.2	99.7
----	--	------	------	--	-------	-------	------	------

GRADE 5 READING

64	88.1	91.3	89.7		100.0	95.3	63.1	90.0
----	------	------	------	--	-------	------	------	------

GRADE 5 SCIENCE

64	88.3	89.6	89.1		98.4	100.0	63.6	93.2
----	------	------	------	--	------	-------	------	------

SEMESTER 1 TESTS

Number Tested	Averages				% Passing		District % Passing	
	% Items Correct	Scale Score	Course Mark	Course Mark (no ACP)	ACP	Course	ACP	Course

GRADE 5 SOCIAL STUDIES

65	74.9	87.3	87.3		100.0	100.0	48.2	97.0
----	------	------	------	--	-------	-------	------	------

SEMESTER 2 TESTS

Number Tested	Averages				% Passing		District % Passing	
	% Items Correct	Scale Score	Course Mark	Course Mark (no ACP)	ACP	Course	ACP	Course

GRADE 5 SOCIAL STUDIES

64	81.8	89.3	88.0		100.0	98.4	53.5	96.0
----	------	------	------	--	-------	------	------	------