

# DATA PACKET

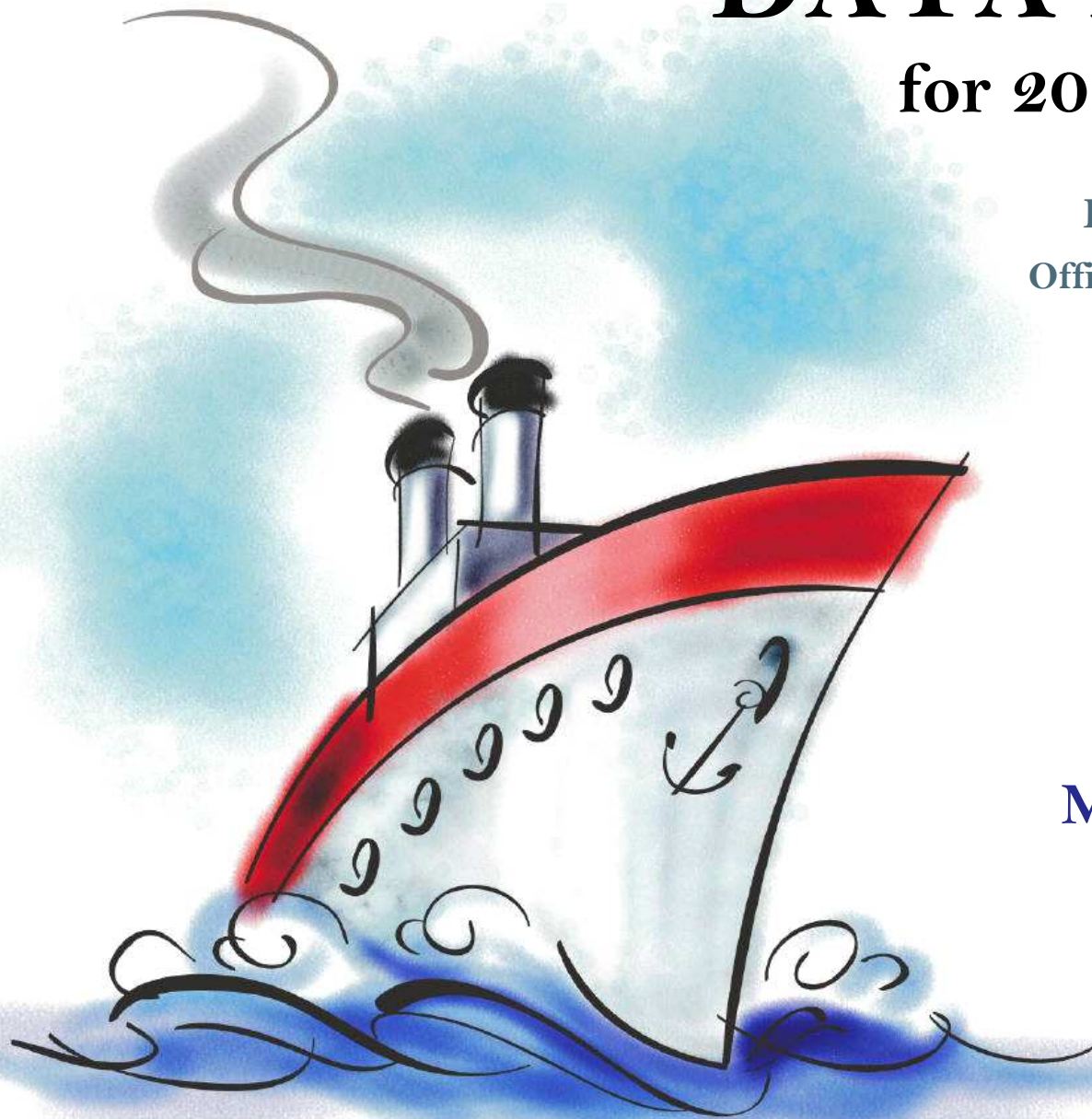
for 2014-15 planning

Evaluation & Assessment  
Office of Institutional Research  
<http://mydata.dallasisd.org>  
[OIR@dallasisd.org](mailto:OIR@dallasisd.org)

September 5, 2014

School Number 48

**W.H. GASTON  
MIDDLE SCHOOL**



Dallas Independent School District

2. Contents ..... Table of Contents

**STUDENTS AND STAFF**

- 5. Summary ..... Summary of Student and Teacher Statistics
- 7. Enroll (2) ..... Enrollment Statistics by Select Student Group
- 9. Teachers ..... Teacher Statistics

**STAAR (English)**

- 10. Reading (3-8) .... STAAR 3-8 Reading in English
- 18. Math (3-8) ..... STAAR 3-8 Mathematics in English
- 26. Science (3-8) ..... STAAR 3-8 Science in English

**STAAR L**

- 34. Math (3-8) ..... STAAR L 3-8 Mathematics
- 42. SS (3-8) ..... STAAR L 3-8 Social Studies

**STAAR M**

- 46. Reading (3-8) .... STAAR M 3-8 Reading
- 54. Math (3-8) ..... STAAR M 3-8 Mathematics
- 62. SS (3-8) ..... STAAR M 3-8 Social Studies

**ENGLISH PROFICIENCY**

- 66. WMLS ..... Woodcock-Muñoz Language Survey

**LOCAL ASSESSMENT**

- 68. ACP ..... Assessments of Course Performance

3. Notes ..... Notes and Data Descriptions

- 6. Enroll (1) ..... Enrollment Statistics by Ethnicity
- 8. Attendance ..... Student Attendance Statistics

- 14. Writing (3-8) ..... STAAR 3-8 Writing in English
- 22. Math (EOC) ..... STAAR EOC Mathematics
- 30. SS (3-8) ..... STAAR 3-8 Social Studies in English

38. Science (3-8) ..... STAAR L 3-8 Science

- 50. Writing (3-8) ..... STAAR M 3-8 Writing
- 58. Science (3-8) ..... STAAR M 3-8 Science

67. TELPAS ..... Texas English Language Proficiency Assessment System

## **2013-14 SCHOOL SUMMARY**

- Student percentages are computed as the percentage of total student enrollment.
- Additional statistics are available in ENROLLMENT and TEACHER reports.
- Race/ethnic categories are based on the newest federal standards for ethnicity and race reporting, though some categories have been combined because of small group sizes. Students reporting their ethnicity as “Hispanic” are not counted in any race category.
- “Economically disadvantaged” students are those who qualify for free or reduced-price lunch through the federal government's program.
- Teacher demographics and assignments are from the district's Public Education Information Management System (PEIMS) submission to the TEA.

## **ENROLLMENT**

- Statistics are based on the school's enrollment at the end of the fifth six-weeks grading period.
- “Economically disadvantaged” students are those receiving free or reduced-price lunches.
- “New” students were new to the district in 2013-14. They are counted as new if not enrolled in a district campus before the last day of the 2012-13 school year.
- The “retention rate” is the percentage of students in the same grade at the end of the fifth six-weeks grading period for both 2012-13 and 2013-14.

## **ATTENDANCE**

- Statistics are based on student attendance through the end of the sixth six-weeks grading period (the end of the school year).
- “Average daily membership” is the total number of school days students were ENROLLED divided by the number of school days in the year.
- The “average daily attendance” number (N) is the total number of school days students were IN ATTENDANCE divided by the number of school days in the year. The “average daily attendance” percentage (%) is the average attendance rate. For each student, the number of days attended is divided by the number of days enrolled. This rate is then averaged across students.
- The number (N) of “yearly transactions” is the total number of transfer and withdrawal transactions in the school year. The percentage (%) is the number of transactions divided by “average daily membership,” which gives (on average) the percentage of the membership associated with a transaction.
- “Continuously enrolled” students are enrolled and in attendance for a minimum number of instructional days in at least one course at the school between the beginning of the school year and the first day of the main STAAR testing period. The minimum number varies depending on the school year's calendar, but is typically around 130 days.
- The “stability rate” is the number of continuously enrolled students divided by “average daily membership.”

## **TEACHERS**

- Teacher demographics and assignments are from the district's Public Education Information Management System (PEIMS) submission to the TEA.
- Teacher absences counted towards the average DO NOT include vacation days (coded as VAC in personnel database).
- Retention rate for a school year is computed with numerator “# of teachers assigned to the school both that year and the year prior” and denominator “# of teachers assigned to the school for the prior year.” That is, the retention rate is the percentage of the prior year's teachers who continued at the school.

### **STAAR, STAAR L, and STAAR M**

- Cells marked with an asterisk (\*) indicate five or fewer students were tested. Blank cells indicate no students were tested.
- Student group assignments are from the district's Public Education Information Management System (PEIMS) submission to the TEA.
- STAAR statistics are based on results from standard STAAR only. STAAR L and STAAR M statistics are computed separately, following TEA reporting practice.
- “Percentage Satisfactory” is the percentage of students achieving Level 2 (Satisfactory) or Level 3 (Advanced).
- Statistics by reporting category are averages for all students (across student groups and genders).
- An “average percentage correct” is computed as follows: for each student, divide the number of items correctly answered by the total number of items in the test section, then average the resulting percentages across all students. For short answers on EOC English tests, an “average rating” is presented; STAAR EOC short answers are rated on a scale of 0 to 3. For written compositions on writing tests, “average score points” is presented. Additional details provided in report footnotes.
- Reading and mathematics statistics for SSI grades 5 and 8 are based on scores cumulative through the second administration.

### **TELPAS**

- Students are counted as having tested if any one of the four domains is rated. Because a TELPAS composite rating is not assigned to a student unless all four domains are rated, the number of TELPAS composite ratings may be smaller than the number tested.
- If a student's composite rating did not increase at least one level from 2013 to 2014, the TEA did not report the 2013 composite rating.
- If a student is rated as advanced high in 2014, the TEA does not differentiate between the advanced and advanced high levels from 2013.

### **ACP**

- Cells marked with an asterisk (\*) indicate five or fewer students were tested. Blank cells indicate no students were tested.
- The ACPs are semester exams administered in grades K-12. Not all courses have ACPs. In MIDDLE and HIGH school, ACP results account for a portion of students' final semester grades (10% and 15% respectively). “Average course mark (no ACP)” is computed from semester grades before factoring in ACP scores. In ELEMENTARY school, ACP results account for 5% of students' semester grades for core courses; course-grade statistics are not reported in data packets for elementary grades.
- Raw scores on the ACPs (percentage of items correct) are scaled each year to maintain similar annual passing rates for the district.
- A scale score of at least 70 percent is required to pass an ACP. A course mark of at least 70 percent is required to pass a course.
- Statistics are computed separately for Semester 1 and Semester 2 tests; time of administration during the school year is not relevant. Results from tests written for different school years are not combined.

**STUDENT ENROLLMENT**

Grade	Enrollment
6	360
7	393
8	376
ALL	1,129

**STUDENT AND TEACHER RACE/ETHNICITY**

Ethnicity/Race	Students		Teachers	
	Number	Percent	Number	Percent
Black/African American	200	17.7	30	43.5
American Indian/Alaska Native	2	0.2	*	*
Asian/Hawaiian/Pacific Islander	4	0.4	*	*
Hispanic	876	77.6	5	7.2
White	41	3.6	32	46.4
Multiple	5	0.4	1	1.4
Other* (teachers only)	—	—	1	1.4
Not reported (students only)	0	0.0	—	—

\*For teachers, "Other" category includes American Indian/Alaska Native and Asian/Hawaiian/Pacific Islander.

**SELECT STUDENT GROUP ENROLLMENT**

Group	Number	Percent
At-Risk	977	86.5
Economically disadvantaged	1,010	89.5
Limited English proficient (LEP)	472	41.8
Special education	98	8.7
Talented and Gifted (TAG)	106	9.4

Grade	Year	Enrollment	African American		American Indian		Asian		Hispanic		White		Multiple category	
			N	%	N	%	N	%	N	%	N	%	N	%
6	2012	414	73	17.6	0	0.0	1	0.2	325	78.5	14	3.4	1	0.2
	2013	395	77	19.5	3	0.8	3	0.8	298	75.4	12	3.0	2	0.5
	2014	360	65	18.1	0	0.0	1	0.3	282	78.3	11	3.1	1	0.3
7	2012	368	51	13.9	0	0.0	4	1.1	292	79.3	17	4.6	3	0.8
	2013	394	72	18.3	0	0.0	0	0.0	305	77.4	16	4.1	1	0.3
	2014	393	76	19.3	2	0.5	2	0.5	296	75.3	15	3.8	2	0.5
8	2012	364	39	10.7	1	0.3	0	0.0	306	84.1	17	4.7	0	0.0
	2013	332	44	13.3	0	0.0	3	0.9	264	79.5	17	5.1	3	0.9
	2014	376	59	15.7	0	0.0	1	0.3	298	79.3	15	4.0	2	0.5
6-8	2012	1,146	163	14.2	1	0.1	5	0.4	923	80.5	48	4.2	4	0.3
	2013	1,121	193	17.2	3	0.3	6	0.5	867	77.3	45	4.0	6	0.5
	2014	1,129	200	17.7	2	0.2	4	0.4	876	77.6	41	3.6	5	0.4

Grade	Year	Enrollment	Economically Disadvantaged		LEP		Special Education		At Risk		TAG		New (to District)		Gender		Retention Rate (%)
			N	%	N	%	N	%	N	%	N	%	N	%	% Male	% Female	
6	2012	414	388	93.7	224	54.1	40	9.7	321	77.5	54	13.0	29	7.0	53.6	46.4	0.2
	2013	395	374	94.7	165	41.8	44	11.1	316	80.0	35	8.9	29	7.3	53.4	46.6	0.8
	2014	360	322	89.4	192	53.3	26	7.2	316	87.8	41	11.4	34	9.4	53.3	46.7	0.8
7	2012	368	331	89.9	128	34.8	33	9.0	231	62.8	35	9.5	41	11.1	48.1	51.9	2.2
	2013	394	362	91.9	185	47.0	38	9.6	297	75.4	46	11.7	26	6.6	51.0	49.0	0.5
	2014	393	358	91.1	160	40.7	38	9.7	344	87.5	27	6.9	40	10.2	53.9	46.1	1.3
8	2012	364	331	90.9	132	36.3	33	9.1	228	62.6	32	8.8	30	8.2	48.9	51.1	0.8
	2013	332	301	90.7	104	31.3	31	9.3	220	66.3	33	9.9	20	6.0	48.8	51.2	1.2
	2014	376	330	87.8	120	31.9	34	9.0	317	84.3	38	10.1	20	5.3	51.1	48.9	1.6
6-8	2012	1,146	1,050	91.6	484	42.2	106	9.2	780	68.1	121	10.6	100	8.7	50.3	49.7	1.0
	2013	1,121	1,037	92.5	454	40.5	113	10.1	833	74.3	114	10.2	75	6.7	51.2	48.8	0.8
	2014	1,129	1,010	89.5	472	41.8	98	8.7	977	86.5	106	9.4	94	8.3	52.8	47.2	1.2

Grade	Year	Average Daily Membership		Average Daily Attendance				Yearly Transactions			Continuously Enrolled		Stability Rate	
		N	District	N	%	District N	District %	N	%	District %	N	District	%	District
6	2012	416	10,683	404	97.2	10,315	96.6	59	14.2	17.6	374	9,420	89.9	88.2
	2013	394	11,463	382	96.8	11,062	96.5	72	18.3	21.1	359	10,320	91.0	90.0
	2014	361	10,808	350	96.8	10,413	96.3	64	17.7	20.0	321	9,554	88.9	88.4
7	2012	370	10,204	355	95.9	9,727	95.3	78	21.1	23.8	312	8,576	84.4	84.0
	2013	388	10,542	374	96.4	10,116	96.0	80	20.6	24.5	349	9,357	90.0	88.8
	2014	388	11,195	372	95.9	10,729	95.8	75	19.3	22.1	340	9,852	87.7	88.0
8	2012	371	10,369	354	95.3	9,838	94.9	36	9.7	15.5	320	8,711	86.1	84.0
	2013	334	9,955	320	96.0	9,486	95.3	51	15.3	17.6	294	8,664	88.1	87.0
	2014	378	10,449	361	95.5	9,970	95.4	29	7.7	13.1	333	9,097	88.1	87.1
6-8	2012	1,157	31,256	1,113	96.2	29,880	95.6	173	14.9	18.9	1,006	26,707	86.9	85.4
	2013	1,116	31,960	1,076	96.4	30,665	96.0	203	18.2	21.1	1,002	28,341	89.8	88.7
	2014	1,127	32,451	1,082	96.0	31,112	95.9	168	14.9	18.5	994	28,503	88.2	87.8



**Teachers: 69**

**DISTRIBUTIONS**

Ethnicity/Race	Number	Percentage
African American	30	43.5
Hispanic	5	7.2
White	32	46.4
Multiple	1	1.4
Other	1	1.4

Gender	Number	Percentage
Female	49	71.0
Male	20	29.0

**ATTENDANCE / RETENTION**

	Average Absences	Retention Rate
2011-12	5.9	—
2012-13	7.6	82.2
2013-14	8.6	67.9

**YEARS EXPERIENCE**

Years	Number	Percentage
Beginning (0)	14	20.3
1	4	5.8
2	5	7.2
3	4	5.8
4	1	1.4
5	6	8.7
1-3	13	18.8
More than 3	42	60.9
1 - 5	20	29.0
6 - 10	14	20.3
11 - 20	13	18.8
More than 20	8	11.6

**PERCENTAGE SATISFACTORY (Levels 2 or 3)**

Grade	Year	White	African Amer	Hispanic	Econ Disadv	Special Educ	LEP	At Risk	Migrant	Male	Female	All	District	Number Tested (All Students)
6	2012	76.9	56.1	59.5	58.6	28.0	54.6	51.4		61.0	58.0	59.5	63.5	398
	2013	90.0	48.5	50.4	49.7	20.0	37.3	37.8		53.7	48.0	51.0	57.7	365
	2014	80.0	62.7	67.0	66.8	50.0	61.0	61.1		59.6	74.2	66.6	63.1	341
7	2012	92.9	54.0	69.9	68.1	21.1	51.6	53.2		61.2	76.3	69.1	67.5	356
	2013	64.3	63.8	67.7	66.3	38.5	63.8	59.7		62.6	71.5	67.1	67.3	368
	2014	66.7	47.4	57.3	55.4	25.0	41.8	46.8		52.2	60.1	56.1	60.5	353
8	2012	87.5	79.4	75.3	76.1	46.7	63.6	65.2		74.1	78.5	76.4	71.3	351
	2013	92.9	79.5	86.3	85.1	66.7	75.6	79.0		77.2	93.9	86.0	82.7	314
	2014	92.9	81.5	85.4	84.4	77.8	71.9	77.8		84.6	85.3	85.0	81.5	359
6-8	2012	86.0	60.7	68.0	67.0	30.5	56.3	55.9		65.2	70.8	68.0	67.4	1,105
	2013	81.6	61.3	67.5	65.7	35.3	56.5	57.5		63.6	70.6	67.1	68.6	1,047
	2014	80.6	63.5	70.1	69.1	52.0	57.3	61.0		65.3	73.5	69.3	68.2	1,053

NUMBER TESTED IN GRADES 6-8													
2012	43	150	901	998	59	469	683		554	551	1,105	29,211	
2013	38	163	831	954	34	455	659		519	528	1,047	29,692	
2014	36	170	837	912	25	454	783		533	520	1,053	30,015	

**NUMBER UNSATISFACTORY (Level 1)**

Grade	Year	White	African Amer	Hispanic	Econ Disadv	Special Educ	LEP	At Risk	Migrant	Male	Female	All	District	Number Tested (All Students)
6	2012	3	29	128	154	18	98	137		82	79	161	3,673	398
	2013	1	34	140	173	12	104	143		87	92	179	4,523	365
	2014	2	22	89	97	4	73	102		72	42	114	3,679	341
7	2012	1	23	86	101	15	60	95		66	44	110	3,070	356
	2013	5	21	95	113	8	72	98		68	53	121	3,215	368
	2014	4	30	119	136	6	89	150		86	69	155	4,075	353
8	2012	2	7	74	74	8	47	69		45	38	83	2,786	351
	2013	1	8	35	41	2	22	39		34	10	44	1,586	314
	2014	1	10	42	49	2	32	53		27	27	54	1,797	359
6-8	2012	6	59	288	329	41	205	301		193	161	354	9,529	1,105
	2013	7	63	270	327	22	198	280		189	155	344	9,324	1,047
	2014	7	62	250	282	12	194	305		185	138	323	9,551	1,053

NUMBER TESTED IN GRADES 6-8													
2012	43	150	901	998	59	469	683		554	551	1,105	29,211	
2013	38	163	831	954	34	455	659		519	528	1,047	29,692	
2014	36	170	837	912	25	454	783		533	520	1,053	30,015	

PERCENTAGE ADVANCED (Level 3)

Grade	Year	White	African Amer	Hispanic	Econ Disadv	Special Educ	LEP	At Risk	Migrant	Male	Female	All	District	Number Tested (All Students)
6	2012	23.1	4.5	4.1	5.1	0.0	3.2	2.8		5.2	4.8	5.0	8.3	398
	2013	0.0	3.0	2.8	2.3	0.0	1.2	0.4		2.1	3.4	2.7	11.3	365
	2014	10.0	5.1	4.8	4.8	0.0	3.7	2.7		4.5	5.5	5.0	7.1	341
7	2012	14.3	10.0	5.6	6.3	0.0	1.6	3.0		5.9	7.5	6.7	10.3	356
	2013	7.1	3.4	7.1	6.9	0.0	4.5	2.9		5.5	8.1	6.8	8.7	368
	2014	25.0	3.5	3.6	4.6	0.0	1.3	2.5		4.4	5.2	4.8	10.0	353
8	2012	12.5	8.8	8.7	9.4	0.0	0.8	2.5		8.6	9.0	8.8	9.9	351
	2013	21.4	20.5	12.9	13.8	0.0	5.6	8.1		12.1	17.0	14.6	15.5	314
	2014	21.4	3.7	11.1	9.5	0.0	2.6	4.2		12.0	9.2	10.6	13.1	359
6-8	2012	16.3	7.3	6.1	6.8	0.0	2.1	2.8		6.5	7.1	6.8	9.5	1,105
	2013	10.5	7.4	7.5	7.2	0.0	3.5	3.5		6.2	9.3	7.7	11.7	1,047
	2014	19.4	4.1	6.6	6.4	0.0	2.6	3.1		6.9	6.7	6.8	10.1	1,053

NUMBER TESTED IN GRADE 6-8													
2012	43	150	901	998	59	469	683		554	551	1,105	29,211	
2013	38	163	831	954	34	455	659		519	528	1,047	29,692	
2014	36	170	837	912	25	454	783		533	520	1,053	30,015	

## AVERAGE PERCENTAGE OF ITEMS CORRECT BY REPORTING CATEGORY

Grade	Year	REPORTING CATEGORY		
		1. Understanding Across Genres (GR 3-5) 1. Understanding/Analysis Across Genres (GR 6-8)	2. Understanding/Analysis of Literary Texts	3. Understanding/Analysis of Informational Texts
6	2012	66.1	60.3	55.2
	2013	58.6	55.4	53.7
	2014	59.6	57.6	60.1
7	2012	67.7	57.8	61.2
	2013	59.2	56.0	66.7
	2014	57.7	53.7	51.6
8	2012	67.1	60.1	62.6
	2013	71.2	70.7	62.8
	2014	68.7	65.2	62.9
6-8	2012	66.9	59.5	59.5
	2013	62.6	60.2	61.0
	2014	62.1	58.9	58.2

**PERCENTAGE SATISFACTORY (Levels 2 or 3)**

Grade	Year	White	African Amer	Hispanic	Econ Disadv	Special Educ	LEP	At Risk	Migrant	Male	Female	All	District	Number Tested (All Students)
7	2012	73.3	41.7	57.9	57.4	5.3	37.9	39.2		47.0	65.8	56.9	59.2	355
	2013	53.3	48.3	55.1	54.5	0.0	48.7	42.1		51.6	56.7	54.2	57.1	369
	2014	61.5	50.0	52.9	53.3	37.5	37.5	44.3		40.4	65.3	52.8	54.6	354

NUMBER TESTED IN GRADE 7													
2012	15	48	285	319	19	124	204		168	187	355	9,456	
2013	15	58	294	336	13	199	242		182	187	369	9,785	
2014	13	58	278	306	8	152	282		178	176	354	10,339	

**NUMBER UNSATISFACTORY (Level 1)**

Grade	Year	White	African Amer	Hispanic	Econ Disadv	Special Educ	LEP	At Risk	Migrant	Male	Female	All	District	Number Tested (All Students)
7	2012	4	28	120	136	18	77	124		89	64	153	3,859	355
	2013	7	30	132	153	13	102	140		88	81	169	4,198	369
	2014	5	29	131	143	5	95	157		106	61	167	4,690	354

NUMBER TESTED IN GRADE 7													
2012	15	48	285	319	19	124	204		168	187	355	9,456	
2013	15	58	294	336	13	199	242		182	187	369	9,785	
2014	13	58	278	306	8	152	282		178	176	354	10,339	

**PERCENTAGE ADVANCED (Level 3)**

Grade	Year	White	African Amer	Hispanic	Econ Disadv	Special Educ	LEP	At Risk	Migrant	Male	Female	All	District	Number Tested (All Students)
7	2012	0.0	0.0	0.7	0.6	0.0	0.0	0.0		0.0	1.1	0.6	3.4	355
	2013	0.0	0.0	0.7	0.6	0.0	0.5	0.4		0.5	0.5	0.5	1.5	369
	2014	0.0	0.0	0.0	0.0	0.0	0.0	0.0		0.0	0.0	0.0	3.0	354

NUMBER TESTED IN GRADE 7													
2012	15	48	285	319	19	124	204		168	187	355	9,456	
2013	15	58	294	336	13	199	242		182	187	369	9,785	
2014	13	58	278	306	8	152	282		178	176	354	10,339	



**AVERAGE PERCENTAGE OF ITEMS CORRECT BY REPORTING CATEGORY**

Grade	Year	REPORTING CATEGORY			
		1. Composition <sup>1</sup> GR 4: Personal Narrative GR 7: Expository	1. Composition <sup>1</sup> GR 4: Expository GR 7: Personal Narrative	2. Revision	3. Editing
7	2012	1.8	2.2	63.2	57.0
	2013	4.0	4.3	62.0	59.1
	2014	3.8	4.3	60.0	54.2

<sup>1</sup>Average score points (range 0-8). A STAAR composition is rated twice on a scale of 1 to 4, and the ratings are summed to determine score points for the composition. Score point scale: 0=Non-scorable; 2=Very Limited; 3=between Very Limited and Basic; 4=Basic; 5=between Basic and Satisfactory; 6=Satisfactory; 7=between Satisfactory and Accomplished; 8=Accomplished

**PERCENTAGE SATISFACTORY (Levels 2 or 3)**

Grade	Year	White	African Amer	Hispanic	Econ Disadv	Special Educ	LEP	At Risk	Migrant	Male	Female	All	District	Number Tested (All Students)
6	2012	42.9	48.5	72.8	67.8	12.0	72.0	63.1		72.6	62.2	67.7	66.4	396
	2013	70.0	44.8	62.9	59.3	16.7	57.3	50.4		62.2	56.3	59.3	60.6	359
	2014	70.0	54.2	70.3	67.4	42.9	66.7	62.1		65.1	69.8	67.4	64.3	334
7	2012	78.6	38.0	58.4	56.9	11.1	50.0	41.5		53.9	59.8	57.0	59.9	349
	2013	57.1	36.2	68.5	63.4	14.3	65.5	55.3		66.7	59.7	63.1	59.9	366
	2014	46.2	38.6	50.4	48.0	33.3	43.4	39.6		49.7	47.0	48.4	55.1	337
8	2012	60.0	46.7	59.8	57.7	33.3	52.0	49.4		62.7	53.8	58.4	51.9	245
	2013	91.7	64.7	75.4	74.7	*	75.6	69.2		73.0	77.1	75.1	74.0	253
	2014	63.6	47.9	75.1	71.3	71.4	71.4	65.0		67.9	72.0	70.1	73.2	281
6-8	2012	60.5	44.5	64.4	61.6	17.2	61.4	52.9		63.9	59.3	61.6	60.3	990
	2013	72.2	45.9	68.3	64.6	22.2	64.4	57.3		66.5	63.1	64.8	63.7	978
	2014	58.8	47.0	64.7	61.6	47.8	60.1	54.8		60.4	62.5	61.4	63.3	952

NUMBER TESTED IN GRADES 6-8													
2012	38	146	796	896	58	430	641		499	491	990	26,044	
2013	36	159	770	893	36	432	641		487	491	978	26,676	
2014	34	164	746	826	23	414	735		477	475	952	27,304	

**NUMBER UNSATISFACTORY (Level 1)**

Grade	Year	White	African Amer	Hispanic	Econ Disadv	Special Educ	LEP	At Risk	Migrant	Male	Female	All	District	Number Tested (All Students)
6	2012	8	34	85	119	22	60	104		57	71	128	3,327	396
	2013	3	37	102	138	15	67	113		70	76	146	4,133	359
	2014	3	27	78	93	4	60	97		61	48	109	3,478	334
7	2012	3	31	116	134	16	59	117		76	74	150	3,705	349
	2013	6	37	92	122	12	68	109		60	75	135	3,851	366
	2014	7	35	130	153	6	77	160		86	88	174	4,536	337
8	2012	4	16	82	91	10	47	87		47	55	102	3,319	245
	2013	1	12	50	56	*	19	52		33	30	63	1,709	253
	2014	4	25	55	71	2	28	75		42	42	84	2,001	281
6-8	2012	15	81	283	344	48	166	308		180	200	380	10,351	990
	2013	10	86	244	316	28	154	274		163	181	344	9,693	978
	2014	14	87	263	317	12	165	332		189	178	367	10,015	952

NUMBER TESTED IN GRADES 6-8													
2012	38	146	796	896	58	430	641		499	491	990	26,044	
2013	36	159	770	893	36	432	641		487	491	978	26,676	
2014	34	164	746	826	23	414	735		477	475	952	27,304	

PERCENTAGE ADVANCED (Level 3)

Grade	Year	White	African Amer	Hispanic	Econ Disadv	Special Educ	LEP	At Risk	Migrant	Male	Female	All	District	Number Tested (All Students)
6	2012	14.3	3.0	9.9	9.5	0.0	10.3	7.8		11.1	6.9	9.1	9.8	396
	2013	10.0	4.5	6.2	5.9	5.6	3.2	2.2		6.5	5.7	6.1	8.5	359
	2014	20.0	1.7	6.5	5.6	14.3	6.1	5.1		5.1	6.9	6.0	9.6	334
7	2012	14.3	0.0	0.7	0.6	0.0	0.8	0.5		1.8	0.5	1.1	6.3	349
	2013	7.1	0.0	5.5	4.8	0.0	5.6	4.1		7.8	1.6	4.6	4.8	366
	2014	7.7	5.3	5.0	4.4	0.0	4.4	3.0		4.7	5.4	5.0	6.7	337
8	2012	0.0	0.0	0.0	0.0	0.0	0.0	0.0		0.0	0.0	0.0	0.4	245
	2013	8.3	0.0	0.0	0.5	*	0.0	0.0		0.0	0.8	0.4	0.9	253
	2014	0.0	0.0	0.0	0.0	0.0	0.0	0.0		0.0	0.0	0.0	1.0	281
6-8	2012	10.5	1.4	4.1	4.1	0.0	5.3	3.5		5.2	2.9	4.0	6.1	990
	2013	8.3	1.9	4.3	4.1	2.8	3.7	2.3		5.3	2.9	4.1	5.3	978
	2014	8.8	2.4	4.0	3.5	4.3	4.1	2.9		3.6	4.2	3.9	6.2	952

NUMBER TESTED IN GRADE 6-8													
2012	38	146	796	896	58	430	654		499	491	990	26,044	
2013	36	159	770	893	36	432	641		487	491	978	26,676	
2014	34	164	746	826	23	414	735		477	475	952	27,304	

## AVERAGE PERCENTAGE OF ITEMS CORRECT BY REPORTING CATEGORY

Grade	Year	REPORTING CATEGORY				
		1. Numbers, Operations, and Quantitative Reasoning	2. Patterns, Relationships, and Algebraic Reasoning	3. Geometry and Spatial Reasoning	4. Measurement	5. Probability and Statistics
6	2012	48.3	56.9	54.9	49.5	50.9
	2013	51.4	51.3	49.4	42.3	45.6
	2014	53.6	52.6	51.8	51.3	56.4
7	2012	48.2	51.0	54.5	37.5	48.7
	2013	50.3	55.4	56.7	41.0	44.9
	2014	51.2	45.5	46.8	39.4	47.6
8	2012	45.8	43.2	39.0	38.8	47.6
	2013	45.8	51.1	47.6	43.1	39.7
	2014	47.8	45.6	45.9	42.3	51.4
6-8	2012	47.6	51.4	50.8	42.6	49.3
	2013	49.5	52.8	51.7	42.0	43.8
	2014	51.1	48.0	48.3	44.4	51.8

## PERCENTAGE SATISFACTORY (Levels 2 or 3)

Test	Year	White	African Amer	Hispanic	Econ Disadv	Special Educ	LEP	At Risk	Migrant	Male	Female	All	District
<b>ALGEBRA I (GRADE 8)</b>	<b>2012</b>	*	*	98.8	98.8		100.0	100.0		97.6	100.0	98.9	94.1
	<b>2013</b>	*	100.0	100.0	100.0	*	100.0	100.0		100.0	100.0	100.0	95.4
	<b>2014</b>	*	*	100.0	100.0		100.0	100.0		100.0	100.0	100.0	97.2
Tests Taken	<b>2012</b>	5	3	84	83		19	15		41	52	93	2,554
	<b>2013</b>	2	7	47	52	2	7	15		22	36	58	2,474
	<b>2014</b>	3	5	59	57		9	16		38	30	68	2,117

## NUMBER UNSATISFACTORY (Level 1)

Test	Year	White	African Amer	Hispanic	Econ Disadv	Special Educ	LEP	At Risk	Migrant	Male	Female	All	District
<b>ALGEBRA I (GRADE 8)</b>	<b>2012</b>	*	*	1	1		0	0		1	0	1	151
	<b>2013</b>	*	0	0	0	*	0	0		0	0	0	115
	<b>2014</b>	*	*	0	0		0	0		0	0	0	60
Tests Taken	<b>2012</b>	5	3	84	83		19	15		41	52	93	2,554
	<b>2013</b>	2	7	47	52	2	7	15		22	36	58	2,474
	<b>2014</b>	3	5	59	57		9	16		38	30	68	2,117

## PERCENTAGE ADVANCED (Level 3)

Test	Year	White	African Amer	Hispanic	Econ Disadv	Special Educ	LEP	At Risk	Migrant	Male	Female	All	District
<b>ALGEBRA I (GRADE 8)</b>	<b>2012</b>	*	*	10.7	12.0		0.0	0.0		14.6	7.7	10.8	19.0
	<b>2013</b>	*	14.3	6.4	5.8	*	0.0	0.0		13.6	2.8	6.9	24.2
	<b>2014</b>	*	*	23.7	21.1		0.0	6.3		26.3	20.0	23.5	28.8
Tests Taken	<b>2012</b>	5	3	84	83		19	22		41	52	93	2,554
	<b>2013</b>	2	7	47	52	2	7	15		22	36	58	2,474
	<b>2014</b>	3	5	59	57		9	16		38	30	68	2,117



## AVERAGE PERCENTAGE OF ITEMS CORRECT BY REPORTING CATEGORY

<b>ALGEBRA I (GRADE 8)</b>	1. Functional Relationships	2. Properties and Attributes of Functions	3. Linear Functions	4. Linear Equations and Inequalities	5. Quadratic and Other Nonlinear Functions
<b>2012</b>	71.4	57.2	65.7	61.6	64.0
<b>2013</b>	63.1	59.2	67.7	74.7	62.5
<b>2014</b>	61.0	66.3	69.2	74.7	60.3

**PERCENTAGE SATISFACTORY (Levels 2 or 3)**

Grade	Year	White	African Amer	Hispanic	Econ Disadv	Special Educ	LEP	At Risk	Migrant	Male	Female	All	District	Number Tested (All Students)
8	2012	73.3	37.5	54.7	55.2	26.7	37.1	34.2		58.5	50.0	54.2	54.0	336
	2013	100.0	61.0	58.3	60.0	50.0	49.4	45.1		62.1	59.6	60.8	65.8	311
	2014	57.1	43.1	69.1	62.8	44.4	49.1	50.9		68.6	61.4	64.9	61.9	345

NUMBER TESTED IN GRADE 8													
2012	15	32	287	297	15	116	193		164	172	336	9,431	
2013	13	41	252	275	8	87	184		145	166	311	8,998	
2014	14	51	278	285	9	106	228		169	176	345	9,466	

**NUMBER UNSATISFACTORY (Level 1)**

Grade	Year	White	African Amer	Hispanic	Econ Disadv	Special Educ	LEP	At Risk	Migrant	Male	Female	All	District	Number Tested (All Students)
8	2012	4	20	130	133	11	73	127		68	86	154	4335	336
	2013	0	16	105	110	4	44	101		55	67	122	3074	311
	2014	6	29	86	106	5	54	112		53	68	121	3605	345

NUMBER TESTED IN GRADE 8													
2012	15	32	287	297	15	116	193		164	172	336	9,431	
2013	13	41	252	275	8	87	184		145	166	311	8,998	
2014	14	51	278	285	9	106	228		169	176	345	9,466	

**PERCENTAGE ADVANCED (Level 3)**

Grade	Year	White	African Amer	Hispanic	Econ Disadv	Special Educ	LEP	At Risk	Migrant	Male	Female	All	District	Number Tested (All Students)
8	2012	0.0	0.0	0.3	0.3	0.0	0.0	0.0		0.0	0.6	0.3	4.2	336
	2013	15.4	2.4	2.4	2.9	0.0	0.0	1.1		4.1	2.4	3.2	7.1	311
	2014	7.1	2.0	10.8	9.8	0.0	3.8	2.6		12.4	6.8	9.6	11.3	345

NUMBER TESTED IN GRADE 8													
2012	15	32	287	297	15	116	193		164	172	336	9,431	
2013	13	41	252	275	8	87	184		145	166	311	8,998	
2014	14	51	278	285	9	106	228		169	176	345	9,466	

## AVERAGE PERCENTAGE OF ITEMS CORRECT BY REPORTING CATEGORY

Grade	Year	REPORTING CATEGORY			
		1. Matter and Energy	2. Force, Motion, and Energy	3. Earth and Space	4. Organisms and Environments
8	2012	53.8	51.2	53.7	56.3
	2013	56.2	53.8	54.5	58.5
	2014	61.0	59.5	55.3	67.8

**PERCENTAGE SATISFACTORY (Levels 2 or 3)**

Grade	Year	White	African Amer	Hispanic	Econ Disadv	Special Educ	LEP	At Risk	Migrant	Male	Female	All	District	Number Tested (All Students)
8	2012	73.3	43.8	54.2	54.2	33.3	38.9	38.9		63.4	45.6	54.4	52.5	333
	2013	84.6	68.3	55.3	57.8	33.3	44.8	47.0		65.1	53.0	58.7	59.3	312
	2014	57.1	34.6	51.4	47.6	22.2	34.0	36.2		50.9	48.0	49.4	53.5	346

NUMBER TESTED IN GRADE 8													
2012	15	32	284	295	15	113	190		164	169	333	9,392	
2013	13	41	253	275	9	87	185		146	166	312	8,991	
2014	14	52	278	286	9	106	229		169	177	346	9,464	

**NUMBER UNSATISFACTORY (Level 1)**

Grade	Year	White	African Amer	Hispanic	Econ Disadv	Special Educ	LEP	At Risk	Migrant	Male	Female	All	District	Number Tested (All Students)
8	2012	4	18	130	135	10	69	116		60	92	152	4462	333
	2013	2	13	113	116	6	48	98		51	78	129	3656	312
	2014	6	34	135	150	7	70	146		83	92	175	4402	346

NUMBER TESTED IN GRADE8													
2012	15	32	284	295	15	113	190		164	169	333	9,392	
2013	13	41	253	275	9	87	185		146	166	312	8,991	
2014	14	52	278	286	9	106	229		169	177	346	9,464	

**PERCENTAGE ADVANCED (Level 3)**

Grade	Year	White	African Amer	Hispanic	Econ Disadv	Special Educ	LEP	At Risk	Migrant	Male	Female	All	District	Number Tested (All Students)
8	2012	20.0	3.1	4.2	4.7	0.0	0.9	1.6		6.1	3.6	4.8	7.1	333
	2013	7.7	7.3	4.0	4.0	0.0	2.3	2.7		8.9	1.2	4.8	8.8	312
	2014	14.3	0.0	6.1	5.6	0.0	3.8	2.6		8.9	2.8	5.8	7.3	346

NUMBER TESTED IN GRADE 8													
2012	15	32	284	295	15	113	190		164	169	333	9,392	
2013	13	41	253	275	9	87	185		146	166	312	8,991	
2014	14	52	278	286	9	106	229		169	177	346	9,464	



## AVERAGE PERCENTAGE OF ITEMS CORRECT BY REPORTING CATEGORY

Grade	Year	REPORTING CATEGORY			
		1. History	2. Geography and Culture	3. Government and Citizenship	4. Economics, Science, Technology, and Society
8	2012	51.1	54.0	47.0	51.9
	2013	58.0	60.9	43.4	51.6
	2014	54.0	43.4	47.4	57.1

**PERCENTAGE SATISFACTORY (Levels 2 or 3)**

Grade	Year	White	African Amer	Hispanic	Econ Disadv	Special Educ	LEP	At Risk	Migrant	Male	Female	All	District	Number Tested (All Students)
6	2012			*	*		*	*		*		*	22.8	2
	2013			33.3	42.9		33.3	*		*	28.6	33.3	30.6	9
	2014			42.9	42.9	*	42.9	33.3		*	*	42.9	29.0	7
7	2012			28.6	33.3		28.6	*		*	*	28.6	16.9	7
	2013			*	*		*			*		*	24.3	3
	2014			33.3	38.5		33.3	33.3		44.4	22.2	33.3	24.8	18
8	2012	*		0.0	0.0		0.0	*		0.0	*	0.0	0.0	12
	2013			*	*		*	*		*		*	25.5	4
	2014			33.3	50.0		42.9	42.9		*	*	42.9	33.2	7
6-8	2012	*		15.0	16.7		14.3	25.0		15.4	12.5	14.3	12.7	21
	2013			31.3	35.7		31.3	55.6		33.3	28.6	31.3	26.8	16
	2014			35.5	42.3	*	37.5	35.5		46.7	29.4	37.5	29.1	32

NUMBER TESTED IN GRADES 6-8													
2012	1		20	18		21	8		13	8	21	620	
2013			16	14		16	9		9	7	16	634	
2014			31	26	1	32	31		15	17	32	722	

**NUMBER UNSATISFACTORY (Level 1)**

Grade	Year	White	African Amer	Hispanic	Econ Disadv	Special Educ	LEP	At Risk	Migrant	Male	Female	All	District	Number Tested (All Students)
6	2012			*	*		*	*		*		*	146	2
	2013			6	4		6	*		*	5	6	150	9
	2014			4	4	*	4	4		*	*	4	171	7
7	2012			5	4		5	*		*	*	5	177	7
	2013			*	*		*			*		*	162	3
	2014			12	8		12	12		5	7	12	176	18
8	2012	*		11	10		12	*		7	*	12	218	12
	2013			*	*		*	*		*		*	152	4
	2014			4	3		4	4		*	*	4	165	7
6-8	2012	*		17	15		18	6		11	7	18	541	21
	2013			11	9		11	4		6	5	11	464	16
	2014			20	15	*	20	20		8	12	20	512	32

NUMBER TESTED IN GRADES 6-8													
2012	1		20	18		21	8		13	8	21	620	
2013			16	14		16	9		9	7	16	634	
2014			31	26	1	32	31		15	17	32	722	

PERCENTAGE ADVANCED (Level 3)

Grade	Year	White	African Amer	Hispanic	Econ Disadv	Special Educ	LEP	At Risk	Migrant	Male	Female	All	District	Number Tested (All Students)
6	2012			*	*		*	*		*		*	1.1	2
	2013			11.1	14.3		11.1	*		*	14.3	11.1	2.3	9
	2014			0.0	0.0	*	0.0	0.0		*	*	0.0	3.3	7
7	2012			0.0	0.0		0.0	*		*	*	0.0	0.0	7
	2013			*	*		*			*		*	0.9	3
	2014			0.0	0.0		0.0	0.0		0.0	0.0	0.0	0.0	18
8	2012	*		0.0	0.0		0.0	*		0.0	*	0.0	0.0	12
	2013			*	*		*	*		*		*	0.0	4
	2014			0.0	0.0		0.0	0.0		*	*	0.0	0.4	7
6-8	2012	*		0.0	0.0		0.0	0.0		0.0	0.0	0.0	0.3	21
	2013			6.3	7.1		6.3	11.1		0.0	14.3	6.3	1.1	16
	2014			0.0	0.0	*	0.0	0.0		0.0	0.0	0.0	1.2	32

NUMBER TESTED IN GRADE 6-8													
2012	1		20	18		21	8		13	8	21	620	
2013			16	14		16	9		9	7	16	634	
2014			31	26	1	32	31		15	17	32	722	

## AVERAGE PERCENTAGE OF ITEMS CORRECT BY REPORTING CATEGORY

Grade	Year	REPORTING CATEGORY				
		1. Numbers, Operations, and Quantitative Reasoning	2. Patterns, Relationships, and Algebraic Reasoning	3. Geometry and Spatial Reasoning	4. Measurement	5. Probability and Statistics
6	2012	*	*	*	*	*
	2013	38.2	45.4	36.1	44.4	34.7
	2014	39.3	41.7	30.4	26.8	35.7
7	2012	27.5	40.7	27.1	30.4	34.3
	2013	*	*	*	*	*
	2014	33.8	35.9	36.7	31.9	37.8
8	2012	46.2	40.5	34.4	41.0	35.8
	2013	*	*	*	*	*
	2014	42.9	35.7	28.6	38.5	40.0
6-8	2012	40.0	41.0	33.5	37.7	35.5
	2013	38.7	40.2	33.8	44.2	34.5
	2014	37.0	37.1	33.5	32.2	37.8

**PERCENTAGE SATISFACTORY (Levels 2 or 3)**

Grade	Year	White	African Amer	Hispanic	Econ Disadv	Special Educ	LEP	At Risk	Migrant	Male	Female	All	District	Number Tested (All Students)
8	2012			20.0	22.2		20.0	*		16.7	*	20.0	14.2	10
	2013			*	*		*	*		*		*	13.3	4
	2014			*	*		16.7	16.7		*	*	16.7	17.0	6

NUMBER TESTED IN GRADE 8													
2012			10	9		10	4		6	4	10	226	
2013			4	4		4	4		4		4	210	
2014			5	5		6	6		2	4	6	277	

**NUMBER UNSATISFACTORY (Level 1)**

Grade	Year	White	African Amer	Hispanic	Econ Disadv	Special Educ	LEP	At Risk	Migrant	Male	Female	All	District	Number Tested (All Students)
8	2012			8	7		8	*		5	*	8	194	10
	2013			*	*		*	*		*		*	182	4
	2014			*	*		5	5		*	*	5	230	6

NUMBER TESTED IN GRADE 8													
2012			10	9		10	4		6	4	10	226	
2013			4	4		4	4		4		4	210	
2014			5	5		6	6		2	4	6	277	

**PERCENTAGE ADVANCED (Level 3)**

Grade	Year	White	African Amer	Hispanic	Econ Disadv	Special Educ	LEP	At Risk	Migrant	Male	Female	All	District	Number Tested (All Students)
8	2012			0.0	0.0		0.0	*		0.0	*	0.0	0.0	10
	2013			*	*		*	*		*		*	0.0	4
	2014			*	*		0.0	0.0		*	*	0.0	0.0	6

NUMBER TESTED IN GRADE 8													
2012			10	9		10	4		6	4	10	226	
2013			4	4		4	4		4		4	210	
2014			5	5		6	6		2	4	6	277	



## AVERAGE PERCENTAGE OF ITEMS CORRECT BY REPORTING CATEGORY

Grade	Year	REPORTING CATEGORY			
		1. Matter and Energy	2. Force, Motion, and Energy	3. Earth and Space	4. Organisms and Environments
8	2012	34.3	35.0	41.4	40.7
	2013	*	*	*	*
	2014	29.8	37.5	51.2	44.0

**PERCENTAGE SATISFACTORY (Levels 2 or 3)**

Grade	Year	White	African Amer	Hispanic	Econ Disadv	Special Educ	LEP	At Risk	Migrant	Male	Female	All	District	Number Tested (All Students)
8	2012			10.0	11.1		10.0	*		0.0	*	10.0	11.1	10
	2013			*	*		*	*		*		*	18.6	4
	2014			*	*		0.0	0.0		*	*	0.0	11.0	6

NUMBER TESTED IN GRADE 8													
2012			10	9		10	4		6	4	10	226	
2013			4	4		4	4		4		4	204	
2014			5	5		6	6		2	4	6	272	

**NUMBER UNSATISFACTORY (Level 1)**

Grade	Year	White	African Amer	Hispanic	Econ Disadv	Special Educ	LEP	At Risk	Migrant	Male	Female	All	District	Number Tested (All Students)
8	2012			9	8		9	*		6	*	9	201	10
	2013			*	*		*	*		*		*	166	4
	2014			*	*		6	6		*	*	6	242	6

NUMBER TESTED IN GRADE8													
2012			10	9		10	4		6	4	10	226	
2013			4	4		4	4		4		4	204	
2014			5	5		6	6		2	4	6	272	

**PERCENTAGE ADVANCED (Level 3)**

Grade	Year	White	African Amer	Hispanic	Econ Disadv	Special Educ	LEP	At Risk	Migrant	Male	Female	All	District	Number Tested (All Students)
8	2012			0.0	0.0		0.0	*		0.0	*	0.0	0.0	10
	2013			*	*		*	*		*		*	1.0	4
	2014			*	*		0.0	0.0		*	*	0.0	0.4	6

NUMBER TESTED IN GRADE 8													
2012			10	9		10	4		6	4	10	226	
2013			4	4		4	4		4		4	204	
2014			5	5		6	6		2	4	6	272	

## AVERAGE PERCENTAGE OF ITEMS CORRECT BY REPORTING CATEGORY

Grade	Year	REPORTING CATEGORY			
		1. History	2. Geography and Culture	3. Government and Citizenship	4. Economics, Science, Technology, and Society
8	2012	31.5	45.8	35.8	41.3
	2013	*	*	*	*
	2014	35.0	37.5	37.5	37.5

**PERCENTAGE SATISFACTORY (Levels 2 or 3)**

Grade	Year	White	African Amer	Hispanic	Econ Disadv	Special Educ	LEP	At Risk	Migrant	Male	Female	All	District	Number Tested (All Students)
6	2012		*	50.0	45.5	45.5	50.0	40.0		28.6	*	45.5	65.5	11
	2013		62.5	72.7	66.7	68.4	83.3	76.5		53.8	100.0	68.4	55.9	19
	2014	*	*	44.4	38.5	40.0	28.6	42.9		25.0	*	40.0	51.6	15
7	2012	*	*	42.9	36.4	33.3	*	27.3		25.0	*	33.3	57.3	12
	2013		62.5	63.6	62.5	63.2	62.5	62.5		57.1	*	63.2	61.0	19
	2014	*	33.3	80.0	55.6	56.0	66.7	54.5		47.4	83.3	56.0	55.4	25
8	2012	*	83.3	62.5	71.4	73.3	57.1	69.2		62.5	85.7	73.3	58.0	15
	2013	*	50.0	91.7	75.0	76.2	83.3	77.8		71.4	85.7	76.2	74.5	21
	2014		85.7	66.7	73.7	73.7	42.9	70.6		69.2	83.3	73.7	75.0	19
6-8	2012	*	50.0	52.4	52.8	52.6	50.0	47.1		39.1	73.3	52.6	60.3	38
	2013	*	59.1	76.5	68.5	69.5	75.0	72.5		61.0	88.9	69.5	63.6	59
	2014	*	45.8	64.5	58.0	57.6	45.0	56.6		47.7	86.7	57.6	60.0	59

NUMBER TESTED IN GRADES 6-8													
2012	3	14	21	36	38	18	34			23	15	38	1,571
2013	3	22	34	54	59	20	51			41	18	59	1,687
2014	4	24	31	50	59	20	53			44	15	59	1,689

**NUMBER UNSATISFACTORY (Level 1)**

Grade	Year	White	African Amer	Hispanic	Econ Disadv	Special Educ	LEP	At Risk	Migrant	Male	Female	All	District	Number Tested (All Students)
6	2012		*	3	6	6	3	6		5	*	6	181	11
	2013		3	3	6	6	1	4		6	0	6	270	19
	2014	*	*	5	8	9	5	8		9	*	9	281	15
7	2012	*	*	4	7	8	*	8		6	*	8	244	12
	2013		3	4	6	7	3	6		6	*	7	202	19
	2014	*	8	2	8	11	2	10		10	1	11	266	25
8	2012	*	1	3	4	4	3	4		3	1	4	199	15
	2013	*	3	1	5	5	1	4		4	1	5	142	21
	2014		1	4	5	5	4	5		4	1	5	128	19
6-8	2012	*	7	10	17	18	9	18		14	4	18	624	38
	2013	*	9	8	17	18	5	14		16	2	18	614	59
	2014	*	13	11	21	25	11	23		23	2	25	675	59

NUMBER TESTED IN GRADES 6-8													
2012	3	14	21	36	38	18	34		23	15	38	1,571	
2013	3	22	34	54	59	20	51		41	18	59	1,687	
2014	4	24	31	50	59	20	53		44	15	59	1,689	

**PERCENTAGE ADVANCED (Level 3)**

Grade	Year	White	African Amer	Hispanic	Econ Disadv	Special Educ	LEP	At Risk	Migrant	Male	Female	All	District	Number Tested (All Students)
6	2012		*	0.0	0.0	0.0	0.0	0.0		0.0	*	0.0	3.6	11
	2013		0.0	9.1	5.6	5.3	0.0	5.9		7.7	0.0	5.3	3.1	19
	2014	*	*	0.0	0.0	0.0	0.0	0.0		0.0	*	0.0	2.9	15
7	2012	*	*	0.0	0.0	0.0	*	0.0		0.0	*	0.0	1.0	12
	2013		0.0	9.1	6.3	5.3	12.5	6.3		7.1	*	5.3	3.5	19
	2014	*	0.0	0.0	0.0	0.0	0.0	0.0		0.0	0.0	0.0	3.9	25
8	2012	*	0.0	0.0	0.0	0.0	0.0	0.0		0.0	0.0	0.0	1.1	15
	2013	*	0.0	0.0	0.0	0.0	0.0	0.0		0.0	0.0	0.0	2.5	21
	2014		0.0	8.3	5.3	5.3	14.3	5.9		7.7	0.0	5.3	2.9	19
6-8	2012	*	0.0	0.0	0.0	0.0	0.0	0.0		0.0	0.0	0.0	1.9	38
	2013	*	0.0	5.9	3.7	3.4	5.0	3.9		4.9	0.0	3.4	3.0	59
	2014	*	0.0	3.2	2.0	1.7	5.0	1.9		2.3	0.0	1.7	3.3	59

NUMBER TESTED IN GRADE 6-8													
2012	3	14	21	36	38	18	34		23	15	38	1,571	
2013	3	22	34	54	59	20	51		41	18	59	1,687	
2014	4	24	31	50	59	20	53		44	15	59	1,689	



## AVERAGE PERCENTAGE OF ITEMS CORRECT BY REPORTING CATEGORY

Grade	Year	REPORTING CATEGORY		
		1. Understanding Across Genres (GR 3-5) 1. Understanding/Analysis Across Genres (GR 6-8)	2. Understanding/Analysis of Literary Texts	3. Understanding/Analysis of Informational Texts
6	2012	31.8	55.7	37.7
	2013	55.9	55.6	60.2
	2014	46.7	48.3	48.6
7	2012	38.5	40.2	37.2
	2013	60.5	57.3	50.9
	2014	49.0	56.0	41.1
8	2012	63.3	58.9	46.7
	2013	60.1	59.5	55.1
	2014	69.7	64.3	58.2
6-8	2012	46.4	52.1	41.1
	2013	58.9	57.5	55.4
	2014	55.1	56.7	48.5

**PERCENTAGE SATISFACTORY (Levels 2 or 3)**

Grade	Year	White	African Amer	Hispanic	Econ Disadv	Special Educ	LEP	At Risk	Migrant	Male	Female	All	District	Number Tested (All Students)
7	2012	*	*	28.6	36.4	33.3	*	27.3		12.5	*	33.3	56.7	12
	2013		50.0	72.7	68.8	63.2	62.5	62.5		64.3	*	63.2	63.7	19
	2014	*	69.2	81.8	80.0	77.8	85.7	79.2		75.0	85.7	77.8	62.9	27

NUMBER TESTED IN GRADE 7													
2012	2	3	7	11	12	5	11		8	4	12	586	
2013		8	11	16	19	8	16		14	5	19	509	
2014	3	13	11	20	27	7	24		20	7	27	599	

**NUMBER UNSATISFACTORY (Level 1)**

Grade	Year	White	African Amer	Hispanic	Econ Disadv	Special Educ	LEP	At Risk	Migrant	Male	Female	All	District	Number Tested (All Students)
7	2012	*	*	5	7	8	*	8		7	*	8	254	12
	2013		4	3	5	7	3	6		5	*	7	185	19
	2014	*	4	2	4	6	1	5		5	1	6	222	27

NUMBER TESTED IN GRADE 7													
2012	2	3	7	11	12	5	11		8	4	12	586	
2013		8	11	16	19	8	16		14	5	19	509	
2014	3	13	11	20	27	7	24		20	7	27	599	

**PERCENTAGE ADVANCED (Level 3)**

Grade	Year	White	African Amer	Hispanic	Econ Disadv	Special Educ	LEP	At Risk	Migrant	Male	Female	All	District	Number Tested (All Students)
7	2012	*	*	0.0	0.0	0.0	*	0.0		0.0	*	0.0	2.7	12
	2013		0.0	9.1	6.3	5.3	12.5	6.3		7.1	*	5.3	6.3	19
	2014	*	0.0	0.0	10.0	7.4	0.0	4.2		10.0	0.0	7.4	6.3	27

NUMBER TESTED IN GRADE 7													
2012	2	3	7	11	12	5	11		8	4	12	586	
2013		8	11	16	19	8	16		14	5	19	509	
2014	3	13	11	20	27	7	24		20	7	27	599	

**AVERAGE PERCENTAGE OF ITEMS CORRECT BY REPORTING CATEGORY**

Grade	Year	REPORTING CATEGORY		
		1. Composition <sup>1</sup> GR 4: Personal Narrative GR 7: Expository	2. Revision	3. Editing
7	2012	1.0	40.4	40.4
	2013	2.8	57.9	50.1
	2014	2.7	57.3	53.8

<sup>1</sup>Average score points (range 0-6). A STAAR M composition is rated twice on a scale of 0 to 3, and the ratings are summed to determine score points for the composition. Score point scale: 0=Non-scorable; 2=Very Limited; 3=between Very Limited and Basic; 4=Basic; 5=between Basic and Satisfactory; 6=Satisfactory

**PERCENTAGE SATISFACTORY (Levels 2 or 3)**

Grade	Year	White	African Amer	Hispanic	Econ Disadv	Special Educ	LEP	At Risk	Migrant	Male	Female	All	District	Number Tested (All Students)
6	2012		*	33.3	27.3	27.3	33.3	30.0		14.3	*	27.3	46.2	11
	2013		71.4	44.4	56.3	56.3	50.0	57.1		57.1	*	56.3	54.3	16
	2014	*	*	66.7	53.8	53.3	71.4	50.0		58.3	*	53.3	52.0	15
7	2012	*	*	62.5	50.0	46.2	*	41.7		55.6	*	46.2	50.5	13
	2013		42.9	50.0	50.0	47.1	57.1	50.0		50.0	*	47.1	49.4	17
	2014	*	25.0	50.0	41.2	37.5	50.0	40.9		38.9	33.3	37.5	48.8	24
8	2012	*	33.3	62.5	50.0	53.3	71.4	61.5		62.5	42.9	53.3	46.2	15
	2013	*	*	76.9	73.7	76.2	83.3	72.2		85.7	57.1	76.2	71.4	21
	2014		75.0	83.3	78.9	80.0	71.4	77.8		85.7	66.7	80.0	71.0	20
6-8	2012	*	21.4	54.5	43.2	43.6	55.6	45.7		45.8	40.0	43.6	47.7	39
	2013	*	63.2	59.4	61.2	61.1	63.2	60.9		65.0	50.0	61.1	58.5	54
	2014	*	44.0	67.7	59.2	55.9	65.0	55.6		59.1	46.7	55.9	56.7	59

NUMBER TESTED IN GRADES 6-8													
2012	3	14	22	37	39	18	35			24	15	39	1,554
2013	3	19	32	49	54	19	46			40	14	54	1,659
2014	3	25	31	49	59	20	54			44	15	59	1,684

**NUMBER UNSATISFACTORY (Level 1)**

Grade	Year	White	African Amer	Hispanic	Econ Disadv	Special Educ	LEP	At Risk	Migrant	Male	Female	All	District	Number Tested (All Students)
6	2012		*	4	8	8	4	7		6	*	8	276	11
	2013		2	5	7	7	3	6		6	*	7	272	16
	2014	*	*	3	6	7	2	7		5	*	7	271	15
7	2012	*	*	3	6	7	*	7		4	*	7	276	13
	2013		4	5	7	9	3	7		6	*	9	257	17
	2014	*	9	5	10	15	3	13		11	4	15	310	24
8	2012	*	4	3	7	7	2	5		3	4	7	260	15
	2013	*	*	3	5	5	1	5		2	3	5	159	21
	2014		2	2	4	4	2	4		2	2	4	149	20
6-8	2012	*	11	10	21	22	8	19		13	9	22	812	39
	2013	*	7	13	19	21	7	18		14	7	21	688	54
	2014	*	14	10	20	26	7	24		18	8	26	730	59

NUMBER TESTED IN GRADES 6-8													
2012	3	14	22	37	39	18	35			24	15	39	1,554
2013	3	19	32	49	54	19	46			40	14	54	1,659
2014	3	25	31	49	59	20	54			44	15	59	1,684

PERCENTAGE ADVANCED (Level 3)

Grade	Year	White	African Amer	Hispanic	Econ Disadv	Special Educ	LEP	At Risk	Migrant	Male	Female	All	District	Number Tested (All Students)
6	2012		*	0.0	0.0	0.0	0.0	0.0		0.0	*	0.0	5.5	11
	2013		42.9	11.1	25.0	25.0	0.0	28.6		21.4	*	25.0	4.9	16
	2014	*	*	11.1	7.7	6.7	14.3	7.1		8.3	*	6.7	3.4	15
7	2012	*	*	0.0	0.0	0.0	*	0.0		0.0	*	0.0	1.1	13
	2013		0.0	10.0	7.1	5.9	14.3	7.1		8.3	*	5.9	3.0	17
	2014	*	8.3	0.0	5.9	4.2	0.0	4.5		5.6	0.0	4.2	2.3	24
8	2012	*	0.0	0.0	0.0	0.0	0.0	0.0		0.0	0.0	0.0	1.2	15
	2013	*	*	0.0	0.0	0.0	0.0	0.0		0.0	0.0	0.0	2.2	21
	2014		0.0	0.0	0.0	0.0	0.0	0.0		0.0	0.0	0.0	1.9	20
6-8	2012	*	0.0	0.0	0.0	0.0	0.0	0.0		0.0	0.0	0.0	2.6	39
	2013	*	15.8	6.3	10.2	9.3	5.3	10.9		10.0	7.1	9.3	3.4	54
	2014	*	4.0	3.2	4.1	3.4	5.0	3.7		4.5	0.0	3.4	2.6	59

NUMBER TESTED IN GRADE 6-8													
2012	3	14	22	37	39	18	35			24	15	39	1,554
2013	3	19	32	49	54	19	46			40	14	54	1,659
2014	3	25	31	49	59	20	54			44	15	59	1,684



## AVERAGE PERCENTAGE OF ITEMS CORRECT BY REPORTING CATEGORY

Grade	Year	REPORTING CATEGORY				
		1. Numbers, Operations, and Quantitative Reasoning	2. Patterns, Relationships, and Algebraic Reasoning	3. Geometry and Spatial Reasoning	4. Measurement	5. Probability and Statistics
6	2012	35.1	27.3	40.9	31.8	39.4
	2013	54.9	53.1	52.1	38.5	61.5
	2014	51.0	41.3	51.1	28.9	57.8
7	2012	32.9	35.4	38.5	25.6	40.4
	2013	39.6	46.5	49.3	34.3	45.6
	2014	42.0	44.6	43.2	44.4	40.1
8	2012	38.7	43.0	37.8	30.7	35.8
	2013	41.4	47.6	42.9	41.4	58.3
	2014	41.5	51.4	54.2	47.5	56.9
6-8	2012	35.7	36.0	38.9	29.3	38.4
	2013	44.8	48.9	47.6	38.3	55.2
	2014	44.1	46.1	48.9	41.5	50.3

**PERCENTAGE SATISFACTORY (Levels 2 or 3)**

Grade	Year	White	African Amer	Hispanic	Econ Disadv	Special Educ	LEP	At Risk	Migrant	Male	Female	All	District	Number Tested (All Students)
8	2012		50.0	50.0	50.0	53.8	50.0	54.5		50.0	57.1	53.8	58.2	13
	2013	*	*	33.3	29.4	31.6	*	25.0		25.0	42.9	31.6	59.3	19
	2014		62.5	83.3	73.7	75.0	71.4	72.2		78.6	66.7	75.0	63.5	20

NUMBER TESTED IN GRADE 8													
2012		6	6	12	13	6	11		6	7	13	457	
2013	3	4	12	17	19	5	16		12	7	19	526	
2014		8	12	19	20	7	18		14	6	20	474	

**NUMBER UNSATISFACTORY (Level 1)**

Grade	Year	White	African Amer	Hispanic	Econ Disadv	Special Educ	LEP	At Risk	Migrant	Male	Female	All	District	Number Tested (All Students)
8	2012		3	3	6	6	3	5		3	3	6	191	13
	2013	*	*	8	12	13	*	12		9	4	13	214	19
	2014		3	2	5	5	2	5		3	2	5	173	20

NUMBER TESTED IN GRADE 8													
2012		6	6	12	13	6	11		6	7	13	457	
2013	3	4	12	17	19	5	16		12	7	19	526	
2014		8	12	19	20	7	18		14	6	20	474	

**PERCENTAGE ADVANCED (Level 3)**

Grade	Year	White	African Amer	Hispanic	Econ Disadv	Special Educ	LEP	At Risk	Migrant	Male	Female	All	District	Number Tested (All Students)
8	2012	*	0.0	0.0	0.0	0.0	0.0	0.0		0.0	0.0	0.0	0.4	13
	2013	*	*	0.0	0.0	0.0	*	0.0		0.0	0.0	0.0	2.5	19
	2014		0.0	0.0	0.0	0.0	0.0	0.0		0.0	0.0	0.0	3.8	20

NUMBER TESTED IN GRADE 8													
2012	1	6	6	12	13	6	11		6	7	13	457	
2013	3	4	12	17	19	5	16		12	7	19	526	
2014		8	12	19	20	7	18		14	6	20	474	

## AVERAGE PERCENTAGE OF ITEMS CORRECT BY REPORTING CATEGORY

Grade	Year	REPORTING CATEGORY			
		1. Matter and Energy	2. Force, Motion, and Energy	3. Earth and Space	4. Organisms and Environments
8	2012	37.8	53.8	48.3	51.7
	2013	52.6	50.5	53.6	45.5
	2014	66.4	69.5	61.8	62.3

**PERCENTAGE SATISFACTORY (Levels 2 or 3)**

Grade	Year	White	African Amer	Hispanic	Econ Disadv	Special Educ	LEP	At Risk	Migrant	Male	Female	All	District	Number Tested (All Students)
8	2012	*	50.0	66.7	58.3	53.8	66.7	45.5		33.3	71.4	53.8	52.3	13
	2013	*	*	63.6	47.1	50.0	*	46.7		36.4	71.4	50.0	59.5	18
	2014		50.0	75.0	63.2	65.0	57.1	61.1		71.4	50.0	65.0	59.3	20

NUMBER TESTED IN GRADE 8													
2012	1	6	6	12	13	6	11		6	7	13	451	
2013	3	4	11	17	18	5	15		11	7	18	516	
2014		8	12	19	20	7	18		14	6	20	479	

## NUMBER UNSATISFACTORY (Level 1)

Grade	Year	White	African Amer	Hispanic	Econ Disadv	Special Educ	LEP	At Risk	Migrant	Male	Female	All	District	Number Tested (All Students)
8	2012	*	3	2	5	6	2	6		4	2	6	215	13
	2013	*	*	4	9	9	*	8		7	2	9	209	18
	2014		4	3	7	7	3	7		4	3	7	195	20

NUMBER TESTED IN GRADE8													
2012	1	6	6	12	13	6	11		6	7	13	451	
2013	3	4	11	17	18	5	15		11	7	18	516	
2014		8	12	19	20	7	18		14	6	20	479	

**PERCENTAGE ADVANCED (Level 3)**

Grade	Year	White	African Amer	Hispanic	Econ Disadv	Special Educ	LEP	At Risk	Migrant	Male	Female	All	District	Number Tested (All Students)
8	2012	*	0.0	0.0	0.0	0.0	0.0	0.0		0.0	0.0	0.0	2.9	13
	2013	*	*	0.0	0.0	0.0	*	0.0		0.0	0.0	0.0	1.9	18
	2014		0.0	0.0	0.0	0.0	0.0	0.0		0.0	0.0	0.0	3.5	20

NUMBER TESTED IN GRADE 8													
2012	1	6	6	12	13	6	11		6	7	13	451	
2013	3	4	11	17	18	5	15		11	7	18	516	
2014		8	12	19	20	7	18		14	6	20	479	



## AVERAGE PERCENTAGE OF ITEMS CORRECT BY REPORTING CATEGORY

Grade	Year	REPORTING CATEGORY			
		1. History	2. Geography and Culture	3. Government and Citizenship	4. Economics, Science, Technology, and Society
8	2012	45.2	46.2	46.9	53.8
	2013	41.0	57.8	47.2	49.1
	2014	60.0	59.0	43.0	67.5

## PERCENTAGE DEMONSTRATING IMPROVEMENT


Grade	Level 1 in 2013		Level 2 in 2013		Level 3 in 2013		Levels 1-3 in 2013	
	Number Tested Both Years	Percentage Improved in 2014	Number Tested Both Years	Percentage Improved in 2014	Number Tested Both Years	Percentage Improved in 2014	Number Tested Both Years	Percentage Improved in 2014
6	3	*	13	76.9	0		16	75.0
7	7	28.6	13	38.5	0		20	35.0
8	3	*	4	*	0		7	28.6
ALL	13	38.5	30	53.3	0		43	48.8

**PERFORMANCE IN 2014**

Grade 2013-14  (N Rated)	Domain:	Listening		Speaking		Writing		Reading		Composite	
	2014 Level	N	%	N	%	N	%	N	%	N	%
6  (190)	Beginning	7	3.7	7	3.7	14	7.4	12	6.3	7	3.7
	Intermediate	30	15.8	36	18.9	46	24.2	69	36.3	43	22.6
	Advanced	62	32.6	57	30.0	61	32.1	78	41.1	91	47.9
	Advanced High	91	47.9	90	47.4	69	36.3	31	16.3	49	25.8
7  (160)	Beginning	7	4.4	5	3.1	10	6.3	18	11.3	7	4.4
	Intermediate	24	15.0	30	18.8	45	28.1	59	37.1	41	25.8
	Advanced	46	28.8	52	32.5	56	35.0	58	36.5	72	45.3
	Advanced High	83	51.9	73	45.6	49	30.6	24	15.1	39	24.5
8  (148)	Beginning	1	0.7	1	0.7	3	2.0	5	3.4	3	2.0
	Intermediate	6	4.1	7	4.7	15	10.1	26	17.6	10	6.8
	Advanced	40	27.0	44	29.7	56	37.8	71	48.0	62	41.9
	Advanced High	101	68.2	96	64.9	74	50.0	46	31.1	73	49.3
ALL  (498)	Beginning	15	3.0	13	2.6	27	5.4	35	7.0	17	3.4
	Intermediate	60	12.0	73	14.7	106	21.3	154	31.0	94	18.9
	Advanced	148	29.7	153	30.7	173	34.7	207	41.6	225	45.3
	Advanced High	275	55.2	259	52.0	192	38.6	101	20.3	161	32.4

**PROGRESSION FROM  
2013 TO 2014**

Number Rated Both Years  N (%) Progressed	2014 Level	2013 Level			
		Beg	Int	Adv	Adv High
179  59 (33.0%)	Beginning	5			
	Intermediate	3	35		
	Advanced	0	8	80	
	Advanced High	0	0	48	
145  43 (29.7%)	Beginning	5			
	Intermediate	2	35		
	Advanced	0	6	62	
	Advanced High	0	1	34	
130  74 (56.9%)	Beginning	1			
	Intermediate	1	7		
	Advanced	0	4	48	
	Advanced High	0	1	68	
454  176 (38.8%)	Beginning	11			
	Intermediate	6	77		
	Advanced	0	18	190	
	Advanced High	0	2	150	

 Indicates students who progressed at least one level from 2013 to 2014.

**SEMESTER 1 TESTS**

Number Tested	Averages				% Passing		District % Passing	
	% Items Correct	Scale Score	Course Mark	Course Mark (no ACP)	ACP	Course	ACP	Course

**ALGEBRA I PRE-AP**

69	60.7	73.8	84.5	85.7	58.0	98.6	65.2	96.3
----	------	------	------	------	------	------	------	------

**ART 7**

28	57.1	71.4	81.5	82.7	57.1	92.6	76.4	97.8
----	------	------	------	------	------	------	------	------

**BEGINNING LANGUAGE ARTS 6 FOR ESL**

2	*	*	*	*	*	*	45.0	*
---	---	---	---	---	---	---	------	---

**BEGINNING LANGUAGE ARTS 7 FOR ESL**

6	43.5	73.5	83.8	85.0	83.3	100.0	39.3	97.6
---	------	------	------	------	------	-------	------	------

**BEGINNING LANGUAGE ARTS 8 FOR ESL**

2	*	*	*	*	*	*	40.7	*
---	---	---	---	---	---	---	------	---

**BEGINNING READING 6 FOR ESL**

2	*	*	*	*	*	*	42.9	*
---	---	---	---	---	---	---	------	---

**INTERMEDIATE LANGUAGE ARTS 7 FOR ESL**

8	63.9	81.9	78.5	78.1	87.5	100.0	59.0	91.4
---	------	------	------	------	------	-------	------	------

**LANGUAGE ARTS 6**

312	51.0	70.6	77.2	77.9	59.6	79.9	51.1	88.5
-----	------	------	------	------	------	------	------	------

**LANGUAGE ARTS 6 PRE-AP**

39	68.4	76.3	83.9	84.7	92.3	94.4	79.1	98.0
----	------	------	------	------	------	------	------	------

**LANGUAGE ARTS 7**

286	41.9	68.9	76.6	77.5	45.1	85.5	52.3	86.0
-----	------	------	------	------	------	------	------	------

**LANGUAGE ARTS 7 PRE-AP**

50	58.5	72.4	83.6	84.9	62.0	100.0	72.1	96.8
----	------	------	------	------	------	-------	------	------

**SEMESTER 2 TESTS**

Number Tested	Averages				% Passing		District % Passing	
	% Items Correct	Scale Score	Course Mark	Course Mark (no ACP)	ACP	Course	ACP	Course

**ALGEBRA I PRE-AP**

--	--	--	--	--	--	--	--	--

**ART 7**

25	76.9	76.5	78.3	78.5	84.0	91.7	71.9	95.8
----	------	------	------	------	------	------	------	------

**BEGINNING LANGUAGE ARTS 6 FOR ESL**

5	*	*	*	*	*	*	34.2	*
---	---	---	---	---	---	---	------	---

**BEGINNING LANGUAGE ARTS 7 FOR ESL**

8	54.2	77.1	84.0	84.4	62.5	100.0	45.1	95.5
---	------	------	------	------	------	-------	------	------

**BEGINNING LANGUAGE ARTS 8 FOR ESL**

5	*	*	*	*	*	*	49.6	*
---	---	---	---	---	---	---	------	---

**BEGINNING READING 6 FOR ESL**

5	*	*	*	*	*	*	44.4	*
---	---	---	---	---	---	---	------	---

**INTERMEDIATE LANGUAGE ARTS 7 FOR ESL**

8	74.6	83.8	75.5	74.6	100.0	87.5	62.9	94.2
---	------	------	------	------	-------	------	------	------

**LANGUAGE ARTS 6**

287	55.0	72.4	78.0	78.4	68.3	87.1	56.8	85.3
-----	------	------	------	------	------	------	------	------

**LANGUAGE ARTS 6 PRE-AP**

41	60.1	74.5	86.9	88.2	80.5	97.6	64.3	96.1
----	------	------	------	------	------	------	------	------

**LANGUAGE ARTS 7**

289	56.4	70.3	75.0	75.5	57.8	81.3	59.3	82.9
-----	------	------	------	------	------	------	------	------

**LANGUAGE ARTS 7 PRE-AP**

50	66.4	73.4	84.2	85.4	74.0	100.0	79.1	96.0
----	------	------	------	------	------	-------	------	------

**SEMESTER 1 TESTS**

Number Tested	Averages				% Passing		District % Passing	
	% Items Correct	Scale Score	Course Mark	Course Mark (no ACP)	ACP	Course	ACP	Course

**LANGUAGE ARTS 8**

270	55.0	70.7	75.6	76.1	59.3	77.7	56.7	87.7
-----	------	------	------	------	------	------	------	------

**LANGUAGE ARTS 8 PRE-AP**

80	63.8	73.5	81.1	82.0	67.5	83.3	76.4	97.3
----	------	------	------	------	------	------	------	------

**MATHEMATICS 6**

307	36.1	70.5	78.8	79.7	51.5	86.0	45.6	86.2
-----	------	------	------	------	------	------	------	------

**MATHEMATICS 6 PRE-AP**

44	51.3	72.9	87.6	89.3	70.5	100.0	65.8	97.0
----	------	------	------	------	------	-------	------	------

**MATHEMATICS 7**

278	35.0	68.5	77.3	78.2	45.7	86.7	49.3	84.8
-----	------	------	------	------	------	------	------	------

**MATHEMATICS 7 PRE-AP**

69	60.9	68.3	79.0	80.2	53.6	91.3	64.9	96.0
----	------	------	------	------	------	------	------	------

**MATHEMATICS 8**

281	50.5	68.4	77.2	78.2	48.4	88.4	51.9	84.5
-----	------	------	------	------	------	------	------	------

**MS BAND: LISTENING AND MUSIC ELEMENTS**

30	66.1	99.4	103.1	46.7	100.0	63.8	98.2
----	------	------	-------	------	-------	------	------

**MS HEALTH EDUCATION**

103	55.7	72.3	88.2	90.0	63.1	100.0	70.0	92.0
-----	------	------	------	------	------	-------	------	------

**PHYSICAL EDUCATION 6**

232	73.7	97.3	99.9	66.8	100.0	74.0	99.1
-----	------	------	------	------	-------	------	------

**PHYSICAL EDUCATION 7 & 8**

324	81.0	98.3	100.2	92.6	100.0	83.6	98.3
-----	------	------	-------	------	-------	------	------

**SEMESTER 2 TESTS**

Number Tested	Averages				% Passing		District % Passing	
	% Items Correct	Scale Score	Course Mark	Course Mark (no ACP)	ACP	Course	ACP	Course

**LANGUAGE ARTS 8**

259	64.0	74.9	73.6	73.5	75.3	69.1	72.6	85.9
-----	------	------	------	------	------	------	------	------

**LANGUAGE ARTS 8 PRE-AP**

79	62.4	74.9	82.0	82.8	81.0	91.1	75.8	96.8
----	------	------	------	------	------	------	------	------

**MATHEMATICS 6**

285	39.6	69.3	77.5	78.1	43.5	81.7	42.2	81.1
-----	------	------	------	------	------	------	------	------

**MATHEMATICS 6 PRE-AP**

46	66.9	77.4	87.2	88.2	82.6	97.8	72.1	95.6
----	------	------	------	------	------	------	------	------

**MATHEMATICS 7**

283	42.1	67.8	74.0	74.7	38.5	71.4	50.1	79.6
-----	------	------	------	------	------	------	------	------

**MATHEMATICS 7 PRE-AP**

65	72.6	79.9	82.8	83.2	87.7	100.0	70.9	96.1
----	------	------	------	------	------	-------	------	------

**MATHEMATICS 8**

272	47.8	68.7	76.0	76.8	44.9	82.0	51.9	85.4
-----	------	------	------	------	------	------	------	------

**MS BAND: LISTENING AND MUSIC ELEMENTS**

32	80.4	98.6	100.6	87.5	100.0	85.6	96.7
----	------	------	-------	------	-------	------	------

**MS HEALTH EDUCATION**

103	54.5	72.1	85.3	86.8	60.2	94.1	73.6	89.8
-----	------	------	------	------	------	------	------	------

**PHYSICAL EDUCATION 6**

228	82.4	93.8	94.6	92.1	100.0	82.8	99.0
-----	------	------	------	------	-------	------	------

**PHYSICAL EDUCATION 7 & 8**

342	82.8	96.1	97.5	94.2	100.0	88.6	97.2
-----	------	------	------	------	-------	------	------

**SEMESTER 1 TESTS**

Number Tested	Averages				% Passing		District % Passing	
	% Items Correct	Scale Score	Course Mark	Course Mark (no ACP)	ACP	Course	ACP	Course

**READING 6**

350	57.7	69.8	79.8	80.9	58.9	89.5	56.3	90.6
-----	------	------	------	------	------	------	------	------

**READING 7**

122	55.1	73.1	80.0	80.7	68.9	89.1	57.9	89.8
-----	------	------	------	------	------	------	------	------

**READING 8**

230	68.4	75.0	73.0	72.8	74.3	60.8	63.6	88.7
-----	------	------	------	------	------	------	------	------

**READING MASTERY 7**

205	47.7	68.6	75.3	76.0	49.8	78.7	50.3	84.6
-----	------	------	------	------	------	------	------	------

**READING MASTERY 8**

117	54.9	70.6	65.7	65.1	61.5	40.0	63.1	85.0
-----	------	------	------	------	------	------	------	------

**SCIENCE 6**

353	46.3	67.8	81.7	83.2	45.6	92.0	59.9	91.6
-----	------	------	------	------	------	------	------	------

**SCIENCE 7**

348	55.5	72.8	75.3	75.5	64.7	84.4	51.0	85.7
-----	------	------	------	------	------	------	------	------

**SCIENCE 8 & SCIENCE 8 PRE-AP**

349	61.8	74.6	79.6	80.2	69.9	91.6	64.6	90.4
-----	------	------	------	------	------	------	------	------

**SOCIAL STUDIES 6**

353	50.7	69.2	79.9	81.1	49.6	89.5	42.8	90.4
-----	------	------	------	------	------	------	------	------

**TECHNOLOGY APPLICATIONS**

179	54.1	72.4	85.8	87.3	57.5	99.4	60.4	93.7
-----	------	------	------	------	------	------	------	------

**TEXAS STUDIES 7**

293	44.9	69.4	78.4	79.4	46.1	87.1	49.3	87.3
-----	------	------	------	------	------	------	------	------

**SEMESTER 2 TESTS**

Number Tested	Averages				% Passing		District % Passing	
	% Items Correct	Scale Score	Course Mark	Course Mark (no ACP)	ACP	Course	ACP	Course

**READING 6**

328	55.0	72.5	78.1	78.5	65.9	85.4	55.7	86.3
-----	------	------	------	------	------	------	------	------

**READING 7**

133	64.8	75.4	79.8	80.3	70.7	87.2	65.6	85.6
-----	------	------	------	------	------	------	------	------

**READING 8**

223	70.1	77.6	70.4	69.6	86.1	55.6	74.8	87.8
-----	------	------	------	------	------	------	------	------

**READING MASTERY 7**

203	52.7	71.1	74.5	74.8	56.7	81.3	59.4	81.4
-----	------	------	------	------	------	------	------	------

**READING MASTERY 8**

115	62.5	75.0	61.3	59.8	73.9	33.0	71.7	85.4
-----	------	------	------	------	------	------	------	------

**SCIENCE 6**

332	48.2	67.0	80.9	82.2	39.2	92.4	57.7	87.5
-----	------	------	------	------	------	------	------	------

**SCIENCE 7**

346	66.1	79.2	74.9	74.4	81.2	80.1	71.7	85.1
-----	------	------	------	------	------	------	------	------

**SCIENCE 8 & SCIENCE 8 PRE-AP**

342	65.8	76.2	78.3	78.5	77.2	85.4	64.5	88.8
-----	------	------	------	------	------	------	------	------

**SOCIAL STUDIES 6**

332	58.2	72.2	81.0	81.7	61.7	93.1	56.1	86.5
-----	------	------	------	------	------	------	------	------

**TECHNOLOGY APPLICATIONS**

179	62.0	76.7	85.3	86.3	74.9	94.3	65.5	89.7
-----	------	------	------	------	------	------	------	------

**TEXAS STUDIES 7**

290	43.7	69.8	78.3	79.2	47.9	80.7	59.9	84.9
-----	------	------	------	------	------	------	------	------

**SEMESTER 1 TESTS**

Number Tested	Averages				% Passing		District % Passing	
	% Items Correct	Scale Score	Course Mark	Course Mark (no ACP)	ACP	Course	ACP	Course

**TEXAS STUDIES 7 PRE-AP**

55	58.1	68.6	87.1	89.2	52.7	100.0	68.1	97.3
----	------	------	------	------	------	-------	------	------

**U.S. STUDIES 8**

298	46.9	69.3	76.9	77.7	45.6	88.1	50.5	85.9
-----	------	------	------	------	------	------	------	------

**U.S. STUDIES 8 PRE-AP**

51	67.0	75.3	83.5	84.4	78.4	100.0	70.3	97.8
----	------	------	------	------	------	-------	------	------

**SEMESTER 2 TESTS**

Number Tested	Averages				% Passing		District % Passing	
	% Items Correct	Scale Score	Course Mark	Course Mark (no ACP)	ACP	Course	ACP	Course

**TEXAS STUDIES 7 PRE-AP**

57	59.0	71.4	89.5	91.5	61.4	100.0	79.0	95.9
----	------	------	------	------	------	-------	------	------

**U.S. STUDIES 8**

288	54.0	69.3	81.1	82.4	47.2	95.8	54.3	84.4
-----	------	------	------	------	------	------	------	------

**U.S. STUDIES 8 PRE-AP**

53	73.8	76.9	86.0	87.0	77.4	98.1	69.5	95.0
----	------	------	------	------	------	------	------	------