

# DATA PACKET

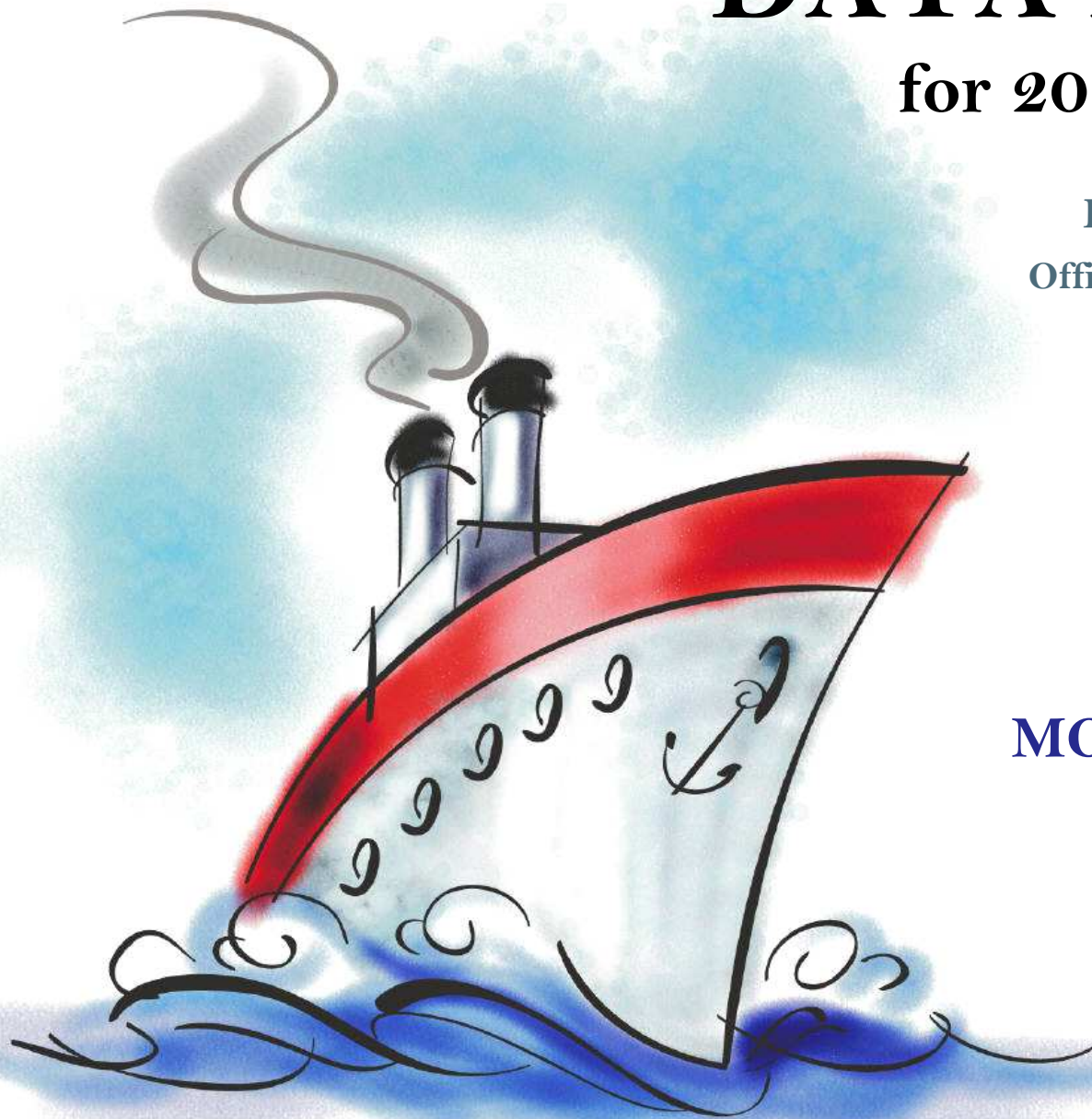
for 2014-15 planning

Evaluation & Assessment  
Office of Institutional Research  
<http://mydata.dallasisd.org>  
[OIR@dallasisd.org](mailto:OIR@dallasisd.org)

September 5, 2014

School Number 5

**MOISES E. MOLINA  
HIGH SCHOOL**



Dallas Independent School District

2. Contents ..... Table of Contents

**STUDENTS AND STAFF**

- 6. Summary ..... Summary of Student and Teacher Statistics
- 8. Enroll (2) ..... Enrollment Statistics by Select Student Group
- 10. Teachers ..... Teacher Statistics

**STAAR (English)**

- 11. Reading (EOC) .. STAAR EOC Reading
- 19. Science (EOC) ... STAAR EOC Science

**STAAR L**

- 27. Math (EOC) ..... STAAR L EOC Mathematics

**STAAR M**

- 35. Reading (EOC) .. STAAR M EOC Reading
- 43. Science (EOC) ... STAAR M EOC Science

**ENGLISH PROFICIENCY**

- 51. WMLS ..... Woodcock-Muñoz Language Survey

**COLLEGE READINESS**

- 53. SAT/ACT ..... SAT/ACT Average Scores for Seniors
- 55. AP ..... Advanced Placement (AP) Exams

**LOCAL ASSESSMENT**

- 56. ACP ..... Assessments of Course Performance

3. Notes ..... Notes and Data Descriptions

- 7. Enroll (1) ..... Enrollment Statistics by Ethnicity
- 9. Attendance ..... Student Attendance Statistics

- 15. Math (EOC) ..... STAAR EOC Mathematics
- 23. SS (EOC) ..... STAAR EOC Social Studies

31. Science (EOC) ... STAAR L EOC Science

- 39. Math (EOC) ..... STAAR M EOC Mathematics
- 47. SS (EOC) ..... STAAR M EOC Social Studies

52. TELPAS ..... Texas English Language Proficiency Assessment System

54. PSAT ..... PSAT Average Scores

## **2013-14 SCHOOL SUMMARY**

- Student percentages are computed as the percentage of total student enrollment.
- Additional statistics are available in ENROLLMENT and TEACHER reports.
- Race/ethnic categories are based on the newest federal standards for ethnicity and race reporting, though some categories have been combined because of small group sizes. Students reporting their ethnicity as “Hispanic” are not counted in any race category.
- “Economically disadvantaged” students are those who qualify for free or reduced-price lunch through the federal government's program.
- Teacher demographics and assignments are from the district's Public Education Information Management System (PEIMS) submission to the TEA.

## **ENROLLMENT**

- Statistics are based on the school's enrollment at the end of the fifth six-weeks grading period.
- “Economically disadvantaged” students are those receiving free or reduced-price lunches.
- “New” students were new to the district in 2013-14. They are counted as new if not enrolled in a district campus before the last day of the 2012-13 school year.
- The “retention rate” is the percentage of students in the same grade at the end of the fifth six-weeks grading period for both 2012-13 and 2013-14.

## **ATTENDANCE**

- Statistics are based on student attendance through the end of the sixth six-weeks grading period (the end of the school year).
- “Average daily membership” is the total number of school days students were ENROLLED divided by the number of school days in the year.
- The “average daily attendance” number (N) is the total number of school days students were IN ATTENDANCE divided by the number of school days in the year. The “average daily attendance” percentage (%) is the average attendance rate. For each student, the number of days attended is divided by the number of days enrolled. This rate is then averaged across students.
- The number (N) of “yearly transactions” is the total number of transfer and withdrawal transactions in the school year. The percentage (%) is the number of transactions divided by “average daily membership,” which gives (on average) the percentage of the membership associated with a transaction.
- “Continuously enrolled” students are enrolled and in attendance for a minimum number of instructional days in at least one course at the school between the beginning of the school year and the first day of the main STAAR testing period. The minimum number varies depending on the school year's calendar, but is typically around 130 days.
- The “stability rate” is the number of continuously enrolled students divided by “average daily membership.”

## **TEACHERS**

- Teacher demographics and assignments are from the district's Public Education Information Management System (PEIMS) submission to the TEA.
- Teacher absences counted towards the average DO NOT include vacation days (coded as VAC in personnel database).
- Retention rate for a school year is computed with numerator “# of teachers assigned to the school both that year and the year prior” and denominator “# of teachers assigned to the school for the prior year.” That is, the retention rate is the percentage of the prior year's teachers who continued at the school.

**STAAR, STAAR L, and STAAR M**

- Cells marked with an asterisk (\*) indicate five or fewer students were tested. Blank cells indicate no students were tested.
- Student group assignments are from the district's Public Education Information Management System (PEIMS) submission to the TEA.
- STAAR statistics are based on results from standard STAAR only. STAAR L and STAAR M statistics are computed separately, following TEA reporting practice.
- “Percentage Satisfactory” is the percentage of students achieving Level 2 (Satisfactory) or Level 3 (Advanced).
- Statistics by reporting category are averages for all students (across student groups and genders).
- An “average percentage correct” is computed as follows: for each student, divide the number of items correctly answered by the total number of items in the test section, then average the resulting percentages across all students. For short answers on EOC English tests, an “average rating” is presented; STAAR EOC short answers are rated on a scale of 0 to 3. For written compositions on writing tests, “average score points” is presented. Additional details provided in report footnotes.
- EOC statistics are based on first administration scores from the fall and spring administrations.
- Beginning in 2014, EOC Reading and EOC Writing tests were replaced with EOC English tests.

**TELPAS**

- Students are counted as having tested if any one of the four domains is rated. Because a TELPAS composite rating is not assigned to a student unless all four domains are rated, the number of TELPAS composite ratings may be smaller than the number tested.
- If a student's composite rating did not increase at least one level from 2013 to 2014, the TEA did not report the 2013 composite rating.
- If a student is rated as advanced high in 2014, the TEA does not differentiate between the advanced and advanced high levels from 2013.

## **COLLEGE READINESS**

- Cells marked with an asterisk (\*) indicate five or fewer students were tested. Blank cells indicate no students were tested.
- For SAT and ACT, “Percent Tested” is computed with “Number Tested” as numerator and, as denominator, Grade 12 “Enrollment” as reported in Enrollment (1) and Enrollment (2) reports. For PSAT, the denominator for “Percent Tested” is grade-level enrollment as reported in Enrollment reports.
- Score summaries for SAT and ACT contain all scores available for the school year at the time of publication.
- The SAT and ACT are administered throughout the school year by The College Board and ACT, Inc. A student takes the SAT or ACT at the time and location of her choice, and she may take either test multiple times. If a student has results from multiple administrations, only the latest is used.
- SAT scores range from 200 to 800. ACT scores range from 0 to 36.
- SAT College and Career Readiness Benchmarks are the same for each subject (critical reading, mathematics, and writing): 500. The SAT benchmark indicates a 65 percent likelihood of achieving a B- average or higher during the first year of college. ACT's College Readiness Benchmarks are the minimum scores that indicate a 50 percent chance of earning a B or better (and 75 percent chance of earning a C or better) in the corresponding college course. The ACT benchmarks are available for four subject-area tests. They are English: 18, reading: 21, mathematics: 22, and science: 24.
- PSAT scores range from 20 to 80. PSAT is administered once each year in October. District students taking PSAT are tested at their schools. Statistics for a grade level are based on all students in that grade level in the fall with a PSAT score for that year. (Students' scores will be used in multiple statistics if they took the PSAT in multiple years.)
- PSAT/NMSQT College and Career Readiness Benchmarks are the scores associated with a 65 percent likelihood of achieving a B- first-year college GPA. The College Board has determined PSAT benchmark scores separately for grades 10 and 11 in each subject. For grade 10, the benchmarks are critical reading: 42, mathematics: 44, writing: 42. For grade 11, the benchmarks are critical reading: 45, mathematics: 47, writing: 45. There are no benchmarks for grade 9.
- AP scores range from 1 to 5; a minimum of 3 is needed to pass.

## **ACP**

- Cells marked with an asterisk (\*) indicate five or fewer students were tested. Blank cells indicate no students were tested.
- The ACPs are semester exams administered in grades K-12. Not all courses have ACPs. In MIDDLE and HIGH school, ACP results account for a portion of students' final semester grades (10% and 15% respectively). “Average course mark (no ACP)” is computed from semester grades before factoring in ACP scores. In ELEMENTARY school, ACP results account for 5% of students' semester grades for core courses; course-grade statistics are not reported in data packets for elementary grades.
- Raw scores on the ACPs (percentage of items correct) are scaled each year to maintain similar annual passing rates for the district.
- A scale score of at least 70 percent is required to pass an ACP. A course mark of at least 70 percent is required to pass a course.
- Statistics are computed separately for Semester 1 and Semester 2 tests; time of administration during the school year is not relevant. Results from tests written for different school years are not combined.

**STUDENT ENROLLMENT**

Grade	Enrollment
9	538
10	470
11	479
12	493
ALL	1,980

**STUDENT AND TEACHER RACE/ETHNICITY**

Ethnicity/Race	Students		Teachers	
	Number	Percent	Number	Percent
Black/African American	51	2.6	24	19.4
American Indian/Alaska Native	6	0.3	*	*
Asian/Hawaiian/Pacific Islander	4	0.2	*	*
Hispanic	1,893	95.6	29	23.4
White	15	0.8	64	51.6
Multiple	10	0.5	3	2.4
Other* (teachers only)	—	—	4	3.2
Not reported (students only)	0	0.0	—	—

\*For teachers, "Other" category includes American Indian/Alaska Native and Asian/Hawaiian/Pacific Islander.

**SELECT STUDENT GROUP ENROLLMENT**

Group	Number	Percent
At-Risk	1,579	79.7
Economically disadvantaged	1,789	90.4
Limited English proficient (LEP)	384	19.4
Special education	155	7.8
Talented and Gifted (TAG)	206	10.4

Grade	Year	Enrollment	African American		American Indian		Asian		Hispanic		White		Multiple category	
			N	%	N	%	N	%	N	%	N	%	N	%
9	2012	557	21	3.8	0	0.0	1	0.2	527	94.6	4	0.7	3	0.5
	2013	510	20	3.9	1	0.2	1	0.2	485	95.1	2	0.4	1	0.2
	2014	538	13	2.4	0	0.0	1	0.2	515	95.7	7	1.3	2	0.4
10	2012	483	14	2.9	5	1.0	2	0.4	455	94.2	2	0.4	5	1.0
	2013	512	16	3.1	0	0.0	1	0.2	487	95.1	3	0.6	4	0.8
	2014	470	15	3.2	1	0.2	1	0.2	450	95.7	2	0.4	1	0.2
11	2012	463	15	3.2	0	0.0	4	0.9	441	95.2	3	0.6	0	0.0
	2013	475	12	2.5	5	1.1	1	0.2	452	95.2	2	0.4	3	0.6
	2014	479	11	2.3	0	0.0	1	0.2	458	95.6	4	0.8	4	0.8
12	2012	403	13	3.2	0	0.0	0	0.0	384	95.3	6	1.5	0	0.0
	2013	456	15	3.3	0	0.0	3	0.7	435	95.4	3	0.7	0	0.0
	2014	493	12	2.4	5	1.0	1	0.2	470	95.3	2	0.4	3	0.6
9-12	2012	1,906	63	3.3	5	0.3	7	0.4	1,807	94.8	15	0.8	8	0.4
	2013	1,953	63	3.2	6	0.3	6	0.3	1,859	95.2	10	0.5	8	0.4
	2014	1,980	51	2.6	6	0.3	4	0.2	1,893	95.6	15	0.8	10	0.5

Grade	Year	Enrollment	Economically Disadvantaged		LEP		Special Education		At Risk		TAG		New (to District)		Gender		Retention Rate (%)
			N	%	N	%	N	%	N	%	N	%	N	%	% Male	% Female	
9	2012	557	495	88.9	121	21.7	38	6.8	368	66.1	57	10.2	61	11.0	47.9	52.1	4.7
	2013	510	463	90.8	112	22.0	56	11.0	348	68.2	60	11.8	48	9.4	52.4	47.6	3.9
	2014	538	485	90.1	169	31.4	46	8.6	433	80.5	64	11.9	58	10.8	45.7	54.3	1.9
10	2012	483	435	90.1	62	12.8	25	5.2	320	66.3	34	7.0	35	7.2	50.3	49.7	1.2
	2013	512	452	88.3	94	18.4	31	6.1	340	66.4	55	10.7	24	4.7	43.9	56.1	1.4
	2014	470	421	89.6	94	20.0	41	8.7	391	83.2	59	12.6	16	3.4	52.3	47.7	0.6
11	2012	463	398	86.0	68	14.7	27	5.8	323	69.8	40	8.6	29	6.3	54.0	46.0	0.6
	2013	475	424	89.3	41	8.6	23	4.8	327	68.8	36	7.6	18	3.8	49.1	50.9	0.0
	2014	479	436	91.0	88	18.4	31	6.5	381	79.5	52	10.9	16	3.3	43.6	56.4	0.4
12	2012	403	362	89.8	60	14.9	40	9.9	297	73.7	38	9.4	5	1.2	50.6	49.4	0.0
	2013	456	404	88.6	52	11.4	43	9.4	328	71.9	35	7.7	10	2.2	54.4	45.6	3.5
	2014	493	447	90.7	33	6.7	37	7.5	374	75.9	31	6.3	10	2.0	48.3	51.7	3.9
9-12	2012	1,906	1,690	88.7	311	16.3	130	6.8	1,308	68.6	169	8.9	130	6.8	50.6	49.4	1.8
	2013	1,953	1,743	89.2	299	15.3	153	7.8	1,343	68.8	186	9.5	100	5.1	49.8	50.2	2.2
	2014	1,980	1,789	90.4	384	19.4	155	7.8	1,579	79.7	206	10.4	100	5.1	47.4	52.6	1.7



Grade	Year	Average Daily Membership		Average Daily Attendance				Yearly Transactions			Continuously Enrolled		Stability Rate	
		N	District	N	%	District N	District %	N	%	District %	N	District	%	District
9	2012	570	10,922	545	95.6	10,196	93.3	92	16.1	27.8	506	8,726	88.8	79.9
	2013	524	11,153	504	96.2	10,499	94.1	53	10.1	28.3	474	9,388	90.5	84.2
	2014	552	10,850	527	95.5	10,242	94.4	55	10.0	28.4	498	9,091	90.2	83.8
10	2012	488	9,007	466	95.4	8,431	93.6	56	11.5	20.6	436	7,332	89.3	81.4
	2013	517	9,331	497	96.1	8,812	94.4	40	7.7	20.5	479	8,042	92.6	86.2
	2014	477	9,898	456	95.6	9,367	94.6	43	9.0	20.3	435	8,628	91.2	87.2
11	2012	481	8,913	456	94.9	8,306	93.2	48	10.0	15.9	424	7,319	88.2	82.1
	2013	491	8,457	473	96.3	7,949	94.0	23	4.7	18.9	456	7,295	92.9	86.3
	2014	490	8,467	465	95.0	8,005	94.5	31	6.3	18.1	453	7,476	92.5	88.3
12	2012	406	8,178	386	95.0	7,571	92.6	22	5.4	12.6	373	6,742	91.9	82.4
	2013	449	8,199	424	94.4	7,661	93.4	31	6.9	14.9	407	7,269	90.6	88.7
	2014	490	7,886	464	94.6	7,407	93.9	25	5.1	15.2	470	7,027	95.9	89.1
9-12	2012	1,945	37,021	1,853	95.3	34,504	93.2	218	11.2	19.8	1,739	30,119	89.4	81.4
	2013	1,981	37,140	1,898	95.8	34,922	94.0	147	7.4	21.2	1,816	31,994	91.7	86.1
	2014	2,009	37,101	1,912	95.2	35,021	94.4	154	7.7	21.1	1,856	32,222	92.4	86.8

Teachers: 124

**DISTRIBUTIONS**

Ethnicity/Race	Number	Percentage
African American	24	19.4
Hispanic	29	23.4
White	64	51.6
Multiple	3	2.4
Other	4	3.2

Gender	Number	Percentage
Female	61	49.2
Male	63	50.8

**ATTENDANCE / RETENTION**

	Average Absences	Retention Rate
2011-12	6.9	—
2012-13	6.5	74.4
2013-14	6.7	76.0

**YEARS EXPERIENCE**

Years	Number	Percentage
Beginning (0)	15	12.1
1	14	11.3
2	6	4.8
3	7	5.6
4	6	4.8
5	7	5.6
1-3	27	21.8
More than 3	82	66.1
1 - 5	40	32.3
6 - 10	19	15.3
11 - 20	30	24.2
More than 20	20	16.1

## PERCENTAGE SATISFACTORY (Levels 2 and 3)

Test	Year	White	African Amer	Hispanic	Econ Disadv	Special Educ	LEP	At Risk	Migrant	Male	Female	All	District
ENGLISH I	2012												
	2013												
	2014	62.5	55.0	60.9	61.5	12.5	36.0	51.9		53.7	67.4	60.8	50.9
Tests Taken	2012												
	2013												
	2014	8	20	745	673	32	253	617		376	402	778	13,789
ENGLISH II	2012												
	2013												
	2014	*	46.7	51.0	51.0	14.8	21.6	40.1		46.0	56.0	50.9	54.8
Tests Taken	2012												
	2013												
	2014	4	15	569	504	27	134	464		298	293	591	10,943

## NUMBER UNSATISFACTORY (Level 1)

Test	Year	White	African Amer	Hispanic	Econ Disadv	Special Educ	LEP	At Risk	Migrant	Male	Female	All	District
ENGLISH I	2012												
	2013												
	2014	3	9	291	259	28	162	297		174	131	305	6,774
Tests Taken	2012												
	2013												
	2014	8	20	745	673	32	253	617		376	402	778	13,789
ENGLISH II	2012												
	2013												
	2014	*	8	279	247	23	105	278		161	129	290	4,948
Tests Taken	2012												
	2013												
	2014	4	15	569	504	27	134	464		298	293	591	10,943

## PERCENTAGE ADVANCED (Level 3)

Test	Year	White	African Amer	Hispanic	Econ Disadv	Special Educ	LEP	At Risk	Migrant	Male	Female	All	District
ENGLISH I	2012												
	2013												
	2014	0.0	0.0	1.3	1.3	0.0	0.0	0.0		0.3	2.2	1.3	3.2
Tests Taken	2012												
	2013												
	2014	8	20	745	673	32	253	617		376	402	778	13,789
ENGLISH II	2012												
	2013												
	2014	*	0.0	0.5	0.4	0.0	0.0	0.2		0.0	1.0	0.5	2.7
Tests Taken	2012												
	2013												
	2014	4	15	569	504	27	134	464		298	293	591	10,943

## AVERAGE PERCENTAGE OF ITEMS CORRECT BY REPORTING CATEGORY

ENGLISH I	1. Understanding & Analysis Across Genres	1. Average Rating Short Answer #1 <sup>1</sup>	1. Average Rating Short Answer #2 <sup>1</sup>	2. Understanding & Analysis of Literary Texts	3. Understanding & Analysis of Informational Texts	4. Expository Composition <sup>2</sup>	5. Revision	6. Editing
2012								
2013								
2014	62.2	1.3	1.5	59.8	57.0	4.2	64.5	53.1

ENGLISH II	1. Understanding & Analysis Across Genres	1. Average Rating Short Answer #1 <sup>1</sup>	1. Average Rating Short Answer #2 <sup>1</sup>	2. Understanding & Analysis of Literary Texts	3. Understanding & Analysis of Informational Texts	4. Persuasive Composition <sup>2</sup>	5. Revision	6. Editing
2012								
2013								
2014	72.7	0.9	1.2	48.7	61.9	4.3	63.3	66.4

<sup>1</sup>Short answer rating scale: 0=Insufficient; 1=Partially Sufficient; 2=Sufficient; 3=Exemplary

<sup>2</sup>Average score points (0-8). A composition is rated twice on a scale of 1 to 4, and the ratings are summed to determine score points for the composition. Score point scale: 0=Nonscorable; 2=Very Limited; 3=between Very Limited and Basic; 4=Basic; 5=between Basic and Satisfactory; 6=Satisfactory; 7=between Satisfactory and Accomplished; 8=Accomplished

## PERCENTAGE SATISFACTORY (Levels 2 or 3)

Test	Year	White	African Amer	Hispanic	Econ Disadv	Special Educ	LEP	At Risk	Migrant	Male	Female	All	District
<b>ALGEBRA I</b>	<b>2012</b>	*	80.0	70.7	70.6	30.8	57.0	65.4		67.8	73.9	71.3	74.7
	<b>2013</b>	*	75.0	73.9	73.1	45.2	61.5	66.0		68.3	80.4	74.0	72.5
	<b>2014</b>	100.0	69.2	83.1	82.5	57.9	71.1	77.8		82.5	82.9	82.7	78.0
Tests Taken	<b>2012</b>	2	15	307	286	13	79	215		143	184	327	8,795
	<b>2013</b>	2	12	330	316	31	78	215		183	163	346	9,251
	<b>2014</b>	6	13	391	355	19	128	311		183	228	411	9,524

## NUMBER UNSATISFACTORY (Level 1)

Test	Year	White	African Amer	Hispanic	Econ Disadv	Special Educ	LEP	At Risk	Migrant	Male	Female	All	District
<b>ALGEBRA I</b>	<b>2012</b>	*	3	90	84	9	34	74		46	48	94	2,226
	<b>2013</b>	*	3	86	85	17	30	73		58	32	90	2,540
	<b>2014</b>	0	4	66	62	8	37	69		32	39	71	2,099
Tests Taken	<b>2012</b>	2	15	307	286	13	79	215		143	184	327	8,795
	<b>2013</b>	2	12	330	316	31	78	215		183	163	346	9,251
	<b>2014</b>	6	13	391	355	19	128	311		183	228	411	9,524



## PERCENTAGE ADVANCED (Level 3)

Test	Year	White	African Amer	Hispanic	Econ Disadv	Special Educ	LEP	At Risk	Migrant	Male	Female	All	District
<b>ALGEBRA I</b>	<b>2012</b>	*	0.0	2.0	1.7	0.0	1.3	0.9		0.7	2.7	1.8	7.0
	<b>2013</b>	*	0.0	1.5	1.3	3.2	2.6	0.9		1.6	1.2	1.4	8.6
	<b>2014</b>	0.0	0.0	5.9	6.2	0.0	1.6	1.6		6.6	4.8	5.6	9.9
Tests Taken	<b>2012</b>	2	15	307	286	13	79	214		143	184	327	8,795
	<b>2013</b>	2	12	330	316	31	78	215		183	163	346	9,251
	<b>2014</b>	6	13	391	355	19	128	311		183	228	411	9,524

## AVERAGE PERCENTAGE OF ITEMS CORRECT BY REPORTING CATEGORY

<b>ALGEBRA I</b>	1. Functional Relationships	2. Properties and Attributes of Functions	3. Linear Functions	4. Linear Equations and Inequalities	5. Quadratic and Other Nonlinear Functions
<b>2012</b>	52.8	42.4	44.7	40.0	44.8
<b>2013</b>	49.2	41.5	45.9	48.7	49.8
<b>2014</b>	46.7	53.7	53.8	50.9	48.9

## PERCENTAGE SATISFACTORY (Levels 2 and 3)

Test	Year	White	African Amer	Hispanic	Econ Disadv	Special Educ	LEP	At Risk	Migrant	Male	Female	All	District
<b>BIOLOGY</b>	<b>2012</b>	*	83.3	83.4	83.3	46.2	65.1	75.1		82.7	84.1	83.5	82.9
	<b>2013</b>	*	80.0	84.3	83.9	56.7	73.2	75.6		84.3	84.4	84.3	84.4
	<b>2014</b>	85.7	100.0	93.4	93.2	68.8	82.4	90.5		92.2	94.5	93.5	89.8
Tests Taken	<b>2012</b>	4	18	459	425	13	86	249		214	270	484	8,881
	<b>2013</b>	2	15	439	417	30	82	234		235	224	459	9,374
	<b>2014</b>	7	12	470	427	16	131	336		218	275	493	9,672

## NUMBER UNSATISFACTORY (Level 1)

Test	Year	White	African Amer	Hispanic	Econ Disadv	Special Educ	LEP	At Risk	Migrant	Male	Female	All	District
<b>BIOLOGY</b>	<b>2012</b>	*	3	76	71	7	30	62		37	43	80	1,522
	<b>2013</b>	*	3	69	67	13	22	57		37	35	72	1,467
	<b>2014</b>	1	0	31	29	5	23	32		17	15	32	987
Tests Taken	<b>2012</b>	4	18	459	425	13	86	249		214	270	484	8,881
	<b>2013</b>	2	15	439	417	30	82	234		235	224	459	9,374
	<b>2014</b>	7	12	470	427	16	131	336		218	275	493	9,672

## PERCENTAGE ADVANCED (Level 3)

Test	Year	White	African Amer	Hispanic	Econ Disadv	Special Educ	LEP	At Risk	Migrant	Male	Female	All	District
<b>BIOLOGY</b>	<b>2012</b>	*	0.0	0.4	0.5	0.0	0.0	0.0		0.9	0.0	0.4	4.8
	<b>2013</b>	*	0.0	3.2	3.1	0.0	0.0	1.7		4.3	1.8	3.1	7.5
	<b>2014</b>	0.0	8.3	3.4	3.5	0.0	1.5	0.6		4.1	2.9	3.4	7.5
Tests Taken	<b>2012</b>	4	18	459	425	13	86	249		214	270	484	8,881
	<b>2013</b>	2	15	439	417	30	82	234		235	224	459	9,374
	<b>2014</b>	7	12	470	427	16	131	336		218	275	493	9,672

## AVERAGE PERCENTAGE OF ITEMS CORRECT BY REPORTING CATEGORY

<b>BIOLOGY</b>	1. Cell Structure and Function	2. Mechanisms of Genetics	3. Biological Evolution and Classification	4. Biological Processes and Systems	5. Interdependence within Environmental Systems
<b>2012</b>	47.6	49.5	53.2	40.3	50.3
<b>2013</b>	53.8	51.4	58.8	49.6	53.9
<b>2014</b>	52.8	60.9	65.6	63.1	53.0

## PERCENTAGE SATISFACTORY (Levels 2 or 3)

Test	Year	White	African Amer	Hispanic	Econ Disadv	Special Educ	LEP	At Risk	Migrant	Male	Female	All	District
U.S. HISTORY	2012												*
	2013			*	*			*			*	*	90.2
	2014	*	80.0	89.3	89.0	20.0	71.6	85.9		90.9	87.7	89.0	92.0
Tests Taken	2012												4
	2013			1	1			1			1	1	51
	2014	4	10	428	392	10	74	312		186	261	447	7,801

## NUMBER UNSATISFACTORY (Level 1)

Test	Year	White	African Amer	Hispanic	Econ Disadv	Special Educ	LEP	At Risk	Migrant	Male	Female	All	District
U.S. HISTORY	2012												*
	2013			*	*			*			*	*	5
	2014	*	2	46	43	8	21	44		17	32	49	625
Tests Taken	2012												4
	2013			1	1			1			1	1	51
	2014	4	10	428	392	10	74	312		186	261	447	7,801



## PERCENTAGE ADVANCED (Level 3)

Test	Year	White	African Amer	Hispanic	Econ Disadv	Special Educ	LEP	At Risk	Migrant	Male	Female	All	District
U.S. HISTORY	2012												*
	2013			*	*			*			*	*	2.0
	2014	*	10.0	6.1	5.4	0.0	0.0	3.2		11.8	1.9	6.0	10.3
Tests Taken	2012												4
	2013			1	1			1			1	1	51
	2014	4	10	428	392	10	74	312		186	261	447	7,801

## AVERAGE PERCENTAGE OF ITEMS CORRECT BY REPORTING CATEGORY

U.S. HISTORY	1. History	2. Geography and Culture	3. Government and Citizenship	4. Economics, Science, Technology, and Society
2012				
2013	*	*	*	*
2014	51.6	62.3	60.0	61.5

## PERCENTAGE SATISFACTORY (Levels 2 and 3)

Test	Year	White	African Amer	Hispanic	Econ Disadv	Special Educ	LEP	At Risk	Migrant	Male	Female	All	District
<b>ALGEBRA I</b>	<b>2012</b>			56.3	57.1		58.8	64.3		63.6	50.0	58.8	42.9
	<b>2013</b>			85.7	85.7		85.7	*		*	*	85.7	51.2
	<b>2014</b>			54.8	59.3		54.8	54.8		55.6	53.8	54.8	42.9
Tests Taken	<b>2012</b>			16	14		17	14		11	6	17	282
	<b>2013</b>			7	7		7	5		4	3	7	320
	<b>2014</b>			31	27		31	31		18	13	31	471

## NUMBER UNSATISFACTORY (Level 1)

Test	Year	White	African Amer	Hispanic	Econ Disadv	Special Educ	LEP	At Risk	Migrant	Male	Female	All	District
<b>ALGEBRA I</b>	<b>2012</b>			7	6		7	5		4	3	7	161
	<b>2013</b>			1	1		1	*		*	*	1	156
	<b>2014</b>			14	11		14	14		8	6	14	269
Tests Taken	<b>2012</b>			16	14		17	14		11	6	17	282
	<b>2013</b>			7	7		7	5		4	3	7	320
	<b>2014</b>			31	27		31	31		18	13	31	471

## PERCENTAGE ADVANCED (Level 3)

Test	Year	White	African Amer	Hispanic	Econ Disadv	Special Educ	LEP	At Risk	Migrant	Male	Female	All	District
<b>ALGEBRA I</b>	<b>2012</b>			12.5	14.3		11.8	14.3		18.2	0.0	11.8	2.5
	<b>2013</b>			0.0	0.0		0.0	*		*	*	0.0	4.1
	<b>2014</b>			12.9	14.8		12.9	12.9		5.6	23.1	12.9	2.3
Tests Taken	<b>2012</b>			16	14		17	14		11	6	17	282
	<b>2013</b>			7	7		7	5		4	3	7	320
	<b>2014</b>			31	27		31	31		18	13	31	471

## AVERAGE PERCENTAGE OF ITEMS CORRECT BY REPORTING CATEGORY

ALGEBRA I	1. Functional Relationships	2. Properties and Attributes of Functions	3. Linear Functions	4. Linear Equations and Inequalities	5. Quadratic and Other Nonlinear Functions
2012	53.7	46.6	45.1	37.1	44.4
2013	62.5	45.2	52.4	28.6	46.0
2014	52.0	46.0	41.7	38.4	43.0

## PERCENTAGE SATISFACTORY (Levels 2 and 3)

Test	Year	White	African Amer	Hispanic	Econ Disadv	Special Educ	LEP	At Risk	Migrant	Male	Female	All	District
<b>BIOLOGY</b>	<b>2012</b>			37.5	42.9		35.3	35.7		45.5	16.7	35.3	25.5
	<b>2013</b>			42.9	42.9		42.9	*		*	*	42.9	49.0
	<b>2014</b>			58.1	63.0		58.1	58.1		50.0	69.2	58.1	42.6
Tests Taken	<b>2012</b>			16	14		17	14		11	6	17	200
	<b>2013</b>			7	7		7	5		4	3	7	259
	<b>2014</b>			31	27		31	31		18	13	31	404

## NUMBER UNSATISFACTORY (Level 1)

Test	Year	White	African Amer	Hispanic	Econ Disadv	Special Educ	LEP	At Risk	Migrant	Male	Female	All	District
<b>BIOLOGY</b>	<b>2012</b>			10	8		11	9		6	5	11	149
	<b>2013</b>			4	4		4	*		*	*	4	132
	<b>2014</b>			13	10		13	13		9	4	13	232
Tests Taken	<b>2012</b>			16	14		17	14		11	6	17	200
	<b>2013</b>			7	7		7	5		4	3	7	259
	<b>2014</b>			31	27		31	31		18	13	31	404



## PERCENTAGE ADVANCED (Level 3)

Test	Year	White	African Amer	Hispanic	Econ Disadv	Special Educ	LEP	At Risk	Migrant	Male	Female	All	District
<b>BIOLOGY</b>	<b>2012</b>			0.0	0.0		0.0	0.0		0.0	0.0	0.0	0.0
	<b>2013</b>			0.0	0.0		0.0	*		*	*	0.0	0.0
	<b>2014</b>			3.2	3.7		3.2	3.2		5.6	0.0	3.2	0.2
Tests Taken	<b>2012</b>			16	14		17	14		11	6	17	200
	<b>2013</b>			7	7		7	5		4	3	7	259
	<b>2014</b>			31	27		31	31		18	13	31	404

## AVERAGE PERCENTAGE OF ITEMS CORRECT BY REPORTING CATEGORY

<b>BIOLOGY</b>	1. Cell Structure and Function	2. Mechanisms of Genetics	3. Biological Evolution and Classification	4. Biological Processes and Systems	5. Interdependence within Environmental Systems
<b>2012</b>	42.8	32.1	43.5	33.7	26.7
<b>2013</b>	27.3	32.5	37.1	31.2	33.8
<b>2014</b>	41.3	43.7	47.4	40.2	45.2

## PERCENTAGE SATISFACTORY (Levels 2 and 3)

Test	Year	White	African Amer	Hispanic	Econ Disadv	Special Educ	LEP	At Risk	Migrant	Male	Female	All	District
ENGLISH I	2012												
	2013												
	2014	*	*	76.0	70.4	70.4	73.3	68.0		68.4	75.0	70.4	50.6
Tests Taken	2012												
	2013												
	2014	1	1	25	27	27	15	25		19	8	27	405
ENGLISH II	2012												
	2013												
	2014		*	64.3	69.2	66.7	66.7	66.7		63.6	*	66.7	65.3
Tests Taken	2012												
	2013												
	2014		1	14	13	15	9	15		11	4	15	340

## NUMBER UNSATISFACTORY (Level 1)

Test	Year	White	African Amer	Hispanic	Econ Disadv	Special Educ	LEP	At Risk	Migrant	Male	Female	All	District
ENGLISH I	2012												
	2013												
	2014	*	*	6	8	8	4	8		6	2	8	200
Tests Taken	2012												
	2013												
	2014	1	1	25	27	27	15	25		19	8	27	405
ENGLISH II	2012												
	2013												
	2014		*	5	4	5	3	5		4	*	5	118
Tests Taken	2012												
	2013												
	2014		1	14	13	15	9	15		11	4	15	340

## PERCENTAGE ADVANCED (Level 3)

Test	Year	White	African Amer	Hispanic	Econ Disadv	Special Educ	LEP	At Risk	Migrant	Male	Female	All	District
ENGLISH I	2012												
	2013												
	2014	*	*	0.0	0.0	0.0	0.0	0.0		0.0	0.0	0.0	3.5
Tests Taken	2012												
	2013												
	2014	1	1	25	27	27	15	25		19	8	27	405
ENGLISH II	2012												
	2013												
	2014		*	7.1	7.7	6.7	11.1	6.7		0.0	*	6.7	12.6
Tests Taken	2012												
	2013												
	2014		1	14	13	15	9	15		11	4	15	340

## AVERAGE PERCENTAGE OF ITEMS CORRECT BY REPORTING CATEGORY

ENGLISH I	1. Understanding & Analysis Across Genres	2. Understanding & Analysis of Literary Texts	3. Understanding & Analysis of Informational Texts	4. Literary Composition <sup>1</sup>	5. Revision	6. Editing
2012						
2013						
2014	68.5	53.5	64.2	3.0	48.1	65.8

ENGLISH II	1. Understanding & Analysis Across Genres	2. Understanding & Analysis of Literary Texts	3. Understanding & Analysis of Informational Texts	4. Expository Composition <sup>1</sup>	5. Revision	6. Editing
2012						
2013						
2014	51.7	51.9	47.4	2.3	53.3	60.0

<sup>1</sup>Average score points (range 0-6). A STAAR M composition is rated twice on a scale of 0 to 3, and the ratings are summed to determine score points for the composition. Score point scale: 0=Non-scorable; 2=Very Limited; 3=between Very Limited and Basic; 4=Basic; 5=between Basic and Satisfactory; 6=Satisfactory

## PERCENTAGE SATISFACTORY (Levels 2 and 3)

Test	Year	White	African Amer	Hispanic	Econ Disadv	Special Educ	LEP	At Risk	Migrant	Male	Female	All	District
<b>ALGEBRA I</b>	<b>2012</b>			33.3	30.0	38.5	25.0	38.5		44.4	*	38.5	32.5
	<b>2013</b>		*	40.0	37.5	36.4	37.5	36.4		25.0	*	36.4	36.9
	<b>2014</b>	*	*	60.0	59.3	59.3	56.3	60.0		61.1	55.6	59.3	46.1
Tests Taken	<b>2012</b>			12	10	13	8	13		9	4	13	280
	<b>2013</b>		1	10	8	11	8	11		8	3	11	339
	<b>2014</b>	1	1	25	27	27	16	25		18	9	27	360

## NUMBER UNSATISFACTORY (Level 1)

Test	Year	White	African Amer	Hispanic	Econ Disadv	Special Educ	LEP	At Risk	Migrant	Male	Female	All	District
<b>ALGEBRA I</b>	<b>2012</b>			8	7	8	6	8		5	*	8	189
	<b>2013</b>		*	6	5	7	5	7		6	*	7	214
	<b>2014</b>	*	*	10	11	11	7	10		7	4	11	194
Tests Taken	<b>2012</b>			12	10	13	8	13		9	4	13	280
	<b>2013</b>		1	10	8	11	8	11		8	3	11	339
	<b>2014</b>	1	1	25	27	27	16	25		18	9	27	360



## PERCENTAGE ADVANCED (Level 3)

Test	Year	White	African Amer	Hispanic	Econ Disadv	Special Educ	LEP	At Risk	Migrant	Male	Female	All	District
<b>ALGEBRA I</b>	<b>2012</b>			0.0	0.0	0.0	0.0	0.0		0.0	*	0.0	0.4
	<b>2013</b>		*	0.0	0.0	0.0	0.0	0.0		0.0	*	0.0	0.0
	<b>2014</b>	*	*	0.0	0.0	0.0	0.0	0.0		0.0	0.0	0.0	1.4
Tests Taken	<b>2012</b>			12	10	13	8	13		9	4	13	280
	<b>2013</b>		1	10	8	11	8	11		8	3	11	339
	<b>2014</b>	1	1	25	27	27	16	25		18	9	27	360

## AVERAGE PERCENTAGE OF ITEMS CORRECT BY REPORTING CATEGORY

<b>ALGEBRA I</b>	1. Functional Relationships	2. Properties and Attributes of Functions	3. Linear Functions	4. Linear Equations and Inequalities	5. Quadratic and Other Nonlinear Functions
<b>2012</b>	34.6	36.9	40.4	36.5	36.3
<b>2013</b>	37.9	35.5	42.4	35.2	45.5
<b>2014</b>	48.1	48.1	41.7	38.9	45.5

## PERCENTAGE SATISFACTORY (Levels 2 and 3)

Test	Year	White	African Amer	Hispanic	Econ Disadv	Special Educ	LEP	At Risk	Migrant	Male	Female	All	District
<b>BIOLOGY</b>	<b>2012</b>	*		33.3	30.0	30.8	37.5	30.8		11.1	*	30.8	31.7
	<b>2013</b>		*	60.0	62.5	54.5	50.0	54.5		50.0	*	54.5	42.6
	<b>2014</b>	*	*	50.0	53.6	53.6	43.8	53.8		63.2	33.3	53.6	46.6
Tests Taken	<b>2012</b>	1		12	10	13	8	13		9	4	13	262
	<b>2013</b>		1	10	8	11	8	11		8	3	11	331
	<b>2014</b>	1	1	26	28	28	16	26		19	9	28	350

## NUMBER UNSATISFACTORY (Level 1)

Test	Year	White	African Amer	Hispanic	Econ Disadv	Special Educ	LEP	At Risk	Migrant	Male	Female	All	District
<b>BIOLOGY</b>	<b>2012</b>	*		8	7	9	5	9		8	*	9	179
	<b>2013</b>		*	4	3	5	4	5		4	*	5	190
	<b>2014</b>	*	*	13	13	13	9	12		7	6	13	187
Tests Taken	<b>2012</b>	1		12	10	13	8	13		9	4	13	262
	<b>2013</b>		1	10	8	11	8	11		8	3	11	331
	<b>2014</b>	1	1	26	28	28	16	26		19	9	28	350

## PERCENTAGE ADVANCED (Level 3)

Test	Year	White	African Amer	Hispanic	Econ Disadv	Special Educ	LEP	At Risk	Migrant	Male	Female	All	District
<b>BIOLOGY</b>	<b>2012</b>			0.0	0.0	0.0	0.0	0.0		0.0	*	0.0	0.0
	<b>2013</b>		*	0.0	0.0	0.0	0.0	0.0		0.0	*	0.0	0.0
	<b>2014</b>	*	*	0.0	0.0	0.0	0.0	0.0		0.0	0.0	0.0	1.1
Tests Taken	<b>2012</b>			12	10	13	8	13		9	4	13	262
	<b>2013</b>		1	10	8	11	8	11		8	3	11	331
	<b>2014</b>	1	1	26	28	28	16	26		19	9	28	350

## AVERAGE PERCENTAGE OF ITEMS CORRECT BY REPORTING CATEGORY

<b>BIOLOGY</b>	1. Cell Structure and Function	2. Mechanisms of Genetics	3. Biological Evolution and Classification	4. Biological Processes and Systems	5. Interdependence within Environmental Systems
<b>2012</b>	41.0	44.2	45.2	39.3	38.5
<b>2013</b>	42.4	44.3	54.5	53.5	47.5
<b>2014</b>	56.0	57.1	56.7	54.8	49.2

## PERCENTAGE SATISFACTORY (Levels 2 and 3)

Test	Year	White	African Amer	Hispanic	Econ Disadv	Special Educ	LEP	At Risk	Migrant	Male	Female	All	District
U.S. HISTORY	2012												
	2013												
	2014			0.0	0.0	0.0	0.0	0.0		0.0	*	0.0	0.0
Tests Taken	2012												
	2013												
	2014			10	9	11	6	10		7	4	11	226

## NUMBER UNSATISFACTORY (Level 1)

Test	Year	White	African Amer	Hispanic	Econ Disadv	Special Educ	LEP	At Risk	Migrant	Male	Female	All	District
U.S. HISTORY	2012												
	2013												
	2014			10	9	11	6	10		7	*	11	226
Tests Taken	2012												
	2013												
	2014			10	9	11	6	10		7	4	11	226



## PERCENTAGE ADVANCED (Level 3)

Test	Year	White	African Amer	Hispanic	Econ Disadv	Special Educ	LEP	At Risk	Migrant	Male	Female	All	District
U.S. HISTORY	2012												
	2013												
	2014			0.0	0.0	0.0	0.0	0.0		0.0	*	0.0	0.0
Tests Taken	2012												
	2013												
	2014			10	9	11	6	10		7	4	11	226

## AVERAGE PERCENTAGE OF ITEMS CORRECT BY REPORTING CATEGORY

U.S. HISTORY	1. History	2. Geography and Culture	3. Government and Citizenship	4. Economics, Science, Technology, and Society
2012				
2013				
2014	48.9	46.5	44.3	47.6

## PERCENTAGE DEMONSTRATING IMPROVEMENT


Grade	Level 1 in 2013		Level 2 in 2013		Level 3 in 2013		Levels 1-3 in 2013	
	Number Tested Both Years	Percentage Improved in 2014	Number Tested Both Years	Percentage Improved in 2014	Number Tested Both Years	Percentage Improved in 2014	Number Tested Both Years	Percentage Improved in 2014
9	16	56.3	14	50.0	0		30	53.3
10	5	*	2	*	0		7	42.9
11	3	*	8	25.0	0		11	27.3
12	4	*	9	44.4	0		13	46.2
ALL	28	50.0	33	42.4	0		61	45.9

**PERFORMANCE IN 2014**

Grade 2013-14  (N Rated)	Domain:	Listening		Speaking		Writing		Reading		Composite	
	2014 Level	N	%	N	%	N	%	N	%	N	%
9  (169)	Beginning	18	10.7	18	10.7	18	10.7	18	10.7	10	5.9
	Intermediate	12	7.1	14	8.3	27	16.0	40	23.7	25	14.8
	Advanced	53	31.4	55	32.5	64	37.9	81	47.9	73	43.2
	Advanced High	86	50.9	82	48.5	60	35.5	30	17.8	61	36.1
10  (92)	Beginning	1	1.1	1	1.1	1	1.1	7	7.6	1	1.1
	Intermediate	14	15.2	12	13.0	13	14.1	24	26.1	9	9.8
	Advanced	21	22.8	23	25.0	23	25.0	45	48.9	39	42.4
	Advanced High	56	60.9	56	60.9	55	59.8	16	17.4	43	46.7
11  (90)	Beginning	2	2.2	2	2.2	1	1.1	7	7.8	1	1.1
	Intermediate	6	6.7	5	5.6	7	7.9	21	23.3	10	11.2
	Advanced	27	30.3	27	30.3	30	33.7	42	46.7	37	41.6
	Advanced High	54	60.7	55	61.8	51	57.3	20	22.2	41	46.1
12  (32)	Beginning	0	0.0	0	0.0	0	0.0	3	9.4	0	0.0
	Intermediate	1	3.1	2	6.3	3	9.4	10	31.3	6	18.8
	Advanced	5	15.6	5	15.6	16	50.0	16	50.0	14	43.8
	Advanced High	26	81.3	25	78.1	13	40.6	3	9.4	12	37.5
ALL  (383)	Beginning	21	5.5	21	5.5	20	5.2	35	9.1	12	3.1
	Intermediate	33	8.6	33	8.6	50	13.1	95	24.8	50	13.1
	Advanced	106	27.7	110	28.8	133	34.8	184	48.0	163	42.7
	Advanced High	222	58.1	218	57.1	179	46.9	69	18.0	157	41.1

**PROGRESSION FROM  
2013 TO 2014**

Number Rated Both Years  N (%) Progressed	2014 Level	2013 Level			
		Beg	Int	Adv	Adv High
29  15 (51.7%)	Beginning	0			
	Intermediate	1	1		
	Advanced	1	1	13	
	Advanced High	0	0	12	
85  46 (54.1%)	Beginning	0			
	Intermediate	5	4		
	Advanced	0	2	35	
	Advanced High	0	1	38	
85  43 (50.6%)	Beginning	1			
	Intermediate	1	8		
	Advanced	0	4	33	
	Advanced High	0	1	37	
29  12 (41.4%)	Beginning	0			
	Intermediate	1	5		
	Advanced	1	1	12	
	Advanced High	0	0	9	
228  116 (50.9%)	Beginning	1			
	Intermediate	8	18		
	Advanced	2	8	93	
	Advanced High	0	2	96	

 Indicates students who progressed at least one level from 2013 to 2014.

Test	Subtest	Year	Percent Tested		All Students			African American			Hispanic			White			District		
			%	Dist %	N	Mean	% at BMRK*	N	Mean	% at BMRK*	N	Mean	% at BMRK*	N	Mean	% at BMRK*	N	Mean	% at BMRK*
SAT	Critical Reading	2011-12	53.8	55.7	217	386	8.3	8	360	0.0	206	386	8.3	3	*	*	4,495	416	18.8
		2012-13	57.5	55.4	262	387	8.0	9	348	0.0	249	388	8.4	2	*	*	4,644	416	19.5
		2013-14	48.7	53.1	240	386	7.5	3	*	*	232	389	7.8				4,203	418	20.7
	Mathematics	2011-12	53.8	55.7	217	428	21.7	8	359	0.0	206	429	22.3	3	*	*	4,495	446	29.8
		2012-13	57.5	55.4	262	432	20.6	9	422	22.2	249	432	20.5	2	*	*	4,644	445	29.0
		2013-14	48.7	53.1	240	415	16.3	3	*	*	232	415	16.4				4,203	440	27.4
	Writing	2011-12	53.8	55.7	217	377	6.5	8	336	0.0	206	378	6.8	3	*	*	4,495	408	15.9
		2012-13	57.5	55.4	262	380	6.9	9	334	0.0	249	381	7.2	2	*	*	4,644	406	16.1
		2013-14	48.7	53.1	240	379	5.4	3	*	*	232	381	5.6				4,203	411	16.9
ACT	English	2011-12	31.0	37.1	125	14	25.6	4	*	*	119	14	25.2	2	*	*	2,995	15	33.3
		2012-13	37.5	29.3	171	14	21.1	2	*	*	167	14	21.0	1	*	*	2,454	16	34.0
		2013-14	47.3	42.0	233	13	13.7	7	12	14.3	224	13	13.8				3,324	15	29.3
	Mathematics	2011-12	31.0	37.1	125	18	17.6	4	*	*	119	18	17.6	2	*	*	2,995	18	22.7
		2012-13	37.5	29.3	171	18	19.3	2	*	*	167	18	19.2	1	*	*	2,454	19	24.4
		2013-14	47.3	42.0	233	17	13.7	7	16	14.3	224	17	13.8				3,324	18	21.8
	Reading	2011-12	31.0	37.1	125	16	16.0	4	*	*	119	16	15.1	2	*	*	2,995	17	23.7
		2012-13	37.5	29.3	171	16	14.0	2	*	*	167	16	14.4	1	*	*	2,454	17	26.5
		2013-14	47.3	42.0	233	15	11.2	7	15	14.3	224	15	11.2				3,324	17	23.8
	Science	2011-12	31.0	37.1	125	17	5.6	4	*	*	119	17	5.0	2	*	*	2,995	18	10.8
		2012-13	37.5	29.3	171	17	7.6	2	*	*	167	17	7.8	1	*	*	2,454	18	12.7
		2013-14	47.3	42.0	233	16	1.3	7	17	0.0	224	16	1.3				3,324	18	8.7
	Composite	2011-12	31.0	37.1	125	16	-	4	*	-	119	16	-	2	*	-	2,995	17	-
		2012-13	37.5	29.3	171	16	-	2	*	-	167	16	-	1	*	-	2,454	18	-
		2013-14	47.3	42.0	233	16	-	7	15	-	224	16	-				3,324	17	-

\*See the NOTES report for information about college-readiness benchmarks set by The College Board (SAT) and ACT, Inc.

Grade	Subtest	Year	All			African American			Hispanic			White			Other			District		
			N	Mean	% at BMRK*	N	Mean	% at BMRK*	N	Mean	% at BMRK*	N	Mean	% at BMRK*	N	Mean	% at BMRK*	N	Mean	% at BMRK*
9	Critical Reading	2011	253	35		8	34		241	35		2	*		0			1,979	39	
		2012	136	37		3	*		130	37		1	*		1	*		1,924	39	
		2013	41	34		2	*		37	34		1	*		0			1,788	39	
	Mathematics	2011	253	39		8	36		241	39		2	*		0			1,979	40	
		2012	136	39		3	*		130	39		1	*		1	*		1,924	40	
		2013	41	34		2	*		37	34		1	*		0			1,788	40	
	Writing	2011	253	36		8	36		241	36		2	*		0			1,979	39	
		2012	136	37		3	*		130	37		1	*		1	*		1,924	39	
		2013	41	32		2	*		37	33		1	*		0			1,788	39	
10	Critical Reading	2011	457	35	16.0	11	33	9.1	435	35	16.1	2	*	*	5	*	*	7,988	36	25.4
		2012	501	35	13.8	15	34	6.7	478	35	14.0	4	*	*	0			8,427	37	23.1
		2013	466	35	13.5	14	35	21.4	447	35	13.4	2	*	*	2	*	*	8,854	36	23.3
	Mathematics	2011	457	37	18.4	11	34	9.1	435	37	18.6	2	*	*	5	*	*	7,988	38	24.5
		2012	501	37	19.0	15	34	0.0	478	37	19.7	4	*	*	0			8,427	38	24.5
		2013	466	37	11.4	14	35	0.0	447	37	11.6	2	*	*	2	*	*	8,854	37	19.6
	Writing	2011	457	34	12.0	11	30	9.1	435	35	11.7	2	*	*	5	*	*	7,988	36	22.7
		2012	501	35	15.4	15	35	6.7	478	36	15.9	4	*	*	0			8,427	37	23.7
		2013	466	34	12.4	14	35	7.1	447	34	12.8	2	*	*	2	*	*	8,854	36	21.0
11	Critical Reading	2011	401	36	16.5	13	36	23.1	380	36	16.6	3	*	*	4	*	*	3,980	41	33.2
		2012	428	38	10.7	8	36	12.5	410	38	10.5	1	*	*	5	*	*	4,007	41	27.4
		2013	456	36	9.0	10	37	10.0	435	36	9.0	4	*	*	1	*	*	3,787	42	32.8
	Mathematics	2011	401	40	22.2	13	38	23.1	380	40	22.1	3	*	*	4	*	*	3,980	43	38.0
		2012	428	39	18.7	8	38	25.0	410	39	18.3	1	*	*	5	*	*	4,007	43	33.0
		2013	456	40	14.5	10	37	0.0	435	40	14.9	4	*	*	1	*	*	3,787	44	33.1
	Writing	2011	401	37	12.0	13	37	15.4	380	37	12.1	3	*	*	4	*	*	3,980	40	28.7
		2012	428	38	15.0	8	35	0.0	410	38	15.1	1	*	*	5	*	*	4,007	41	33.0
		2013	456	36	11.0	10	37	30.0	435	36	10.6	4	*	*	1	*	*	3,787	41	32.5

\*See the NOTES report for information about college readiness benchmarks set by The College Board for PSAT

Exams Taken		Average Score		Exams Passed		
N	Dist	Score	Dist	N	%	Dist

Exams Taken		Mean Score		Passed		
School	Dist	School	Dist	N	%	Dist

Exams Taken		Mean Score		Passed		
School	Dist	School	Dist	N	%	Dist

**ALL EXAMS**

<b>590</b>	18,984	<b>1.6</b>	1.9	<b>91</b>	<b>15.4</b>	25.1
------------	--------	------------	-----	-----------	-------------	------

**English Language & Composition**

<b>169</b>	3,194	<b>1.4</b>	1.8	<b>10</b>	<b>5.9</b>	18.1
------------	-------	------------	-----	-----------	------------	------

**Spanish Language**

<b>58</b>	831	<b>3.3</b>	3.5	<b>53</b>	<b>91.4</b>	87.5
-----------	-----	------------	-----	-----------	-------------	------

**Studio Art: Drawing**

<b>1</b>	23	*	3.5	*	*	69.6
----------	----	---	-----	---	---	------

**Biology**

<b>49</b>	738	<b>1.2</b>	1.9	<b>1</b>	<b>2.0</b>	23.4
-----------	-----	------------	-----	----------	------------	------

**English Literature & Composition**

<b>95</b>	2,374	<b>1.5</b>	1.8	<b>9</b>	<b>9.5</b>	18.0
-----------	-------	------------	-----	----------	------------	------

**Statistics**

<b>26</b>	502	<b>1.2</b>	2.1	<b>2</b>	<b>7.7</b>	33.5
-----------	-----	------------	-----	----------	------------	------

**United States History**

<b>104</b>	2,570	<b>1.1</b>	1.5	<b>1</b>	<b>1.0</b>	12.6
------------	-------	------------	-----	----------	------------	------

**Calculus AB**

<b>66</b>	960	<b>1.6</b>	2.5	<b>13</b>	<b>19.7</b>	45.7
-----------	-----	------------	-----	-----------	-------------	------

**Physics B**

<b>20</b>	315	<b>1.3</b>	2.2	<b>1</b>	<b>5.0</b>	35.9
-----------	-----	------------	-----	----------	------------	------

**Studio Art: 2-D Design**

<b>2</b>	84	*	3.0	*	*	60.7
----------	----	---	-----	---	---	------

**SEMESTER 1 TESTS**

Number Tested	Averages				% Passing		District % Passing	
	% Items Correct	Scale Score	Course Mark	Course Mark (no ACP)	ACP	Course	ACP	Course

**ALGEBRA I**

425	37.9	68.4	75.2	76.3	38.8	76.2	41.1	81.4
-----	------	------	------	------	------	------	------	------

**ALGEBRA II**

272	37.5	68.8	75.5	76.7	42.3	78.7	47.9	86.0
-----	------	------	------	------	------	------	------	------

**ALGEBRA II PRE-AP**

170	40.1	69.5	80.3	82.1	46.5	91.8	55.3	89.4
-----	------	------	------	------	------	------	------	------

**ART I**

288	73.2	79.9	83.4	83.9	82.6	98.2	79.1	94.8
-----	------	------	------	------	------	------	------	------

**BIOLOGY**

403	57.7	76.5	73.7	73.2	83.1	72.5	61.9	82.5
-----	------	------	------	------	------	------	------	------

**BIOLOGY PRE-AP**

137	60.1	73.4	75.2	75.5	73.7	72.3	71.3	90.4
-----	------	------	------	------	------	------	------	------

**CHEMISTRY**

325	41.6	72.2	73.1	73.2	64.6	71.7	49.7	83.5
-----	------	------	------	------	------	------	------	------

**CHEMISTRY PRE-AP**

153	57.4	77.6	80.5	81.1	86.3	90.2	64.2	93.3
-----	------	------	------	------	------	------	------	------

**ECONOMICS**

228	63.7	75.8	80.3	81.1	74.1	94.3	69.6	95.1
-----	------	------	------	------	------	------	------	------

**ENGLISH I**

350	51.3	70.2	73.2	73.7	54.9	76.7	50.7	84.8
-----	------	------	------	------	------	------	------	------

**ENGLISH I FOR ESL**

15	43.9	68.2	70.3	70.6	46.7	66.7	54.2	88.3
----	------	------	------	------	------	------	------	------

**SEMESTER 2 TESTS**

Number Tested	Averages				% Passing		District % Passing	
	% Items Correct	Scale Score	Course Mark	Course Mark (no ACP)	ACP	Course	ACP	Course

**ALGEBRA I**

--	--	--	--	--	--	--	--	--

**ALGEBRA II**

239	44.6	71.4	74.3	74.8	58.6	78.6	55.9	84.7
-----	------	------	------	------	------	------	------	------

**ALGEBRA II PRE-AP**

162	54.2	73.6	79.6	80.6	69.8	91.4	69.3	87.2
-----	------	------	------	------	------	------	------	------

**ART I**

250	66.7	76.3	87.5	89.4	79.2	98.4	75.5	93.6
-----	------	------	------	------	------	------	------	------

**BIOLOGY**

--	--	--	--	--	--	--	--	--

**BIOLOGY PRE-AP**

--	--	--	--	--	--	--	--	--

**CHEMISTRY**

309	57.0	74.2	71.8	71.4	75.7	64.3	59.3	78.5
-----	------	------	------	------	------	------	------	------

**CHEMISTRY PRE-AP**

146	69.8	79.9	79.3	79.2	93.8	91.8	68.3	91.1
-----	------	------	------	------	------	------	------	------

**ECONOMICS**

--	--	--	--	--	--	--	--	--

**ENGLISH I**

322	57.8	71.2	72.9	73.3	60.6	70.7	58.2	81.7
-----	------	------	------	------	------	------	------	------

**ENGLISH I FOR ESL**

8	53.4	73.1	78.8	79.7	37.5	100.0	62.6	91.7
---	------	------	------	------	------	-------	------	------



**SEMESTER 1 TESTS**

Number Tested	Averages				% Passing		District % Passing	
	% Items Correct	Scale Score	Course Mark	Course Mark (no ACP)	ACP	Course	ACP	Course

**ENGLISH I PRE-AP**

162	53.7	70.5	79.4	81.0	59.9	85.8	71.2	92.1
-----	------	------	------	------	------	------	------	------

**ENGLISH II**

323	57.0	71.3	80.3	81.9	60.7	89.6	59.6	83.5
-----	------	------	------	------	------	------	------	------

**ENGLISH II FOR ESL**

4	*	*	*	*	*	*	50.3	*
---	---	---	---	---	---	---	------	---

**ENGLISH II PRE-AP**

155	52.4	72.0	68.5	67.9	63.9	54.2	73.6	91.4
-----	------	------	------	------	------	------	------	------

**ENGLISH III**

338	59.4	71.0	78.1	79.3	56.5	83.7	55.7	89.1
-----	------	------	------	------	------	------	------	------

**ENGLISH IV**

370	60.6	73.8	77.9	78.6	70.3	91.9	67.9	91.6
-----	------	------	------	------	------	------	------	------

**ENVIRONMENTAL SYSTEMS**

135	62.1	73.0	80.5	81.8	65.2	100.0	75.5	97.3
-----	------	------	------	------	------	-------	------	------

**FRENCH I**

104	56.6	71.1	76.5	77.5	57.7	88.5	68.1	85.0
-----	------	------	------	------	------	------	------	------

**FRENCH II**

143	48.3	70.1	73.2	73.8	49.7	69.2	61.5	87.9
-----	------	------	------	------	------	------	------	------

**GEOMETRY**

340	48.2	72.3	78.7	79.8	63.5	85.4	61.9	83.3
-----	------	------	------	------	------	------	------	------

**GEOMETRY PRE-AP**

118	50.1	68.1	73.0	73.9	44.1	59.3	64.6	89.6
-----	------	------	------	------	------	------	------	------

**SEMESTER 2 TESTS**

Number Tested	Averages				% Passing		District % Passing	
	% Items Correct	Scale Score	Course Mark	Course Mark (no ACP)	ACP	Course	ACP	Course

**ENGLISH I PRE-AP**

154	58.2	73.3	82.0	83.6	63.6	94.2	78.6	93.9
-----	------	------	------	------	------	------	------	------

**ENGLISH II**

303	59.9	72.1	75.8	76.5	62.4	78.5	61.3	80.9
-----	------	------	------	------	------	------	------	------

**ENGLISH II FOR ESL**

3	*	*	*	*	*	*	62.3	*
---	---	---	---	---	---	---	------	---

**ENGLISH II PRE-AP**

151	55.2	70.8	73.3	73.7	57.6	78.1	72.2	89.9
-----	------	------	------	------	------	------	------	------

**ENGLISH III**

294	62.5	68.7	75.6	76.8	57.1	73.5	52.9	82.6
-----	------	------	------	------	------	------	------	------

**ENGLISH IV**

--	--	--	--	--	--	--	--	--

**ENVIRONMENTAL SYSTEMS**

--	--	--	--	--	--	--	--	--

**FRENCH I**

95	53.7	69.1	74.7	75.6	43.2	76.8	65.5	80.1
----	------	------	------	------	------	------	------	------

**FRENCH II**

124	51.1	68.8	73.1	73.9	45.2	75.8	58.4	81.8
-----	------	------	------	------	------	------	------	------

**GEOMETRY**

322	58.7	77.9	79.4	79.6	79.8	85.1	66.7	79.7
-----	------	------	------	------	------	------	------	------

**GEOMETRY PRE-AP**

113	46.1	71.1	76.9	77.9	51.3	80.5	66.0	89.1
-----	------	------	------	------	------	------	------	------

**SEMESTER 1 TESTS**

Number Tested	Averages				% Passing		District % Passing	
	% Items Correct	Scale Score	Course Mark	Course Mark (no ACP)	ACP	Course	ACP	Course

**GOVERNMENT**

223	64.8	77.5	85.1	86.4	83.0	100.0	58.9	94.1
-----	------	------	------	------	------	-------	------	------

**HS BAND: LISTENING AND MUSIC ELEMENTS**

27	72.3	91.5	94.9	63.0	88.9	67.0	98.9
----	------	------	------	------	------	------	------

**HS HEALTH EDUCATION**

180	69.9	79.9	88.6	90.2	86.1	100.0	81.1	96.5
-----	------	------	------	------	------	-------	------	------

**PHYSICS**

333	36.6	67.8	75.4	76.7	33.0	82.8	37.8	85.3
-----	------	------	------	------	------	------	------	------

**PHYSICS PRE-AP**

146	38.3	63.7	77.4	79.8	23.3	91.8	53.9	94.5
-----	------	------	------	------	------	------	------	------

**PRE-CALCULUS**

243	50.3	68.9	77.7	79.2	54.7	87.7	53.4	87.9
-----	------	------	------	------	------	------	------	------

**PRE-CALCULUS PRE-AP**

152	62.3	74.9	82.1	83.3	69.7	95.4	72.6	93.1
-----	------	------	------	------	------	------	------	------

**READING II FOR ESL**

3	*	*	*	*	*	*	48.7	*
---	---	---	---	---	---	---	------	---

**SPANISH FOR NATIVE SPEAKERS I**

22	59.2	72.8	75.7	76.1	68.2	71.4	64.4	89.8
----	------	------	------	------	------	------	------	------

**SPANISH FOR NATIVE SPEAKERS II**

54	58.5	72.3	81.0	82.6	64.8	100.0	62.7	94.3
----	------	------	------	------	------	-------	------	------

**SPANISH I**

176	75.8	83.9	77.6	76.5	84.1	84.0	71.3	91.2
-----	------	------	------	------	------	------	------	------

**SEMESTER 2 TESTS**

Number Tested	Averages				% Passing		District % Passing	
	% Items Correct	Scale Score	Course Mark	Course Mark (no ACP)	ACP	Course	ACP	Course

**GOVERNMENT**

--	--	--	--	--	--	--	--	--

**HS BAND: LISTENING AND MUSIC ELEMENTS**

21	75.2	95.8	99.5	76.2	100.0	84.0	96.5
----	------	------	------	------	-------	------	------

**HS HEALTH EDUCATION**

164	69.1	77.9	87.2	88.8	84.1	99.4	76.7	95.7
-----	------	------	------	------	------	------	------	------

**PHYSICS**

277	47.3	72.3	75.7	76.3	62.1	86.6	53.6	82.4
-----	------	------	------	------	------	------	------	------

**PHYSICS PRE-AP**

158	43.0	70.0	76.8	78.0	50.6	77.6	62.4	91.8
-----	------	------	------	------	------	------	------	------

**PRE-CALCULUS**

23	39.4	70.2	75.4	76.3	52.2	87.0	48.2	82.4
----	------	------	------	------	------	------	------	------

**PRE-CALCULUS PRE-AP**

120	54.3	73.7	79.3	80.2	67.5	92.3	62.6	90.8
-----	------	------	------	------	------	------	------	------

**READING II FOR ESL**

2	*	*	*	*	*	*	70.2	*
---	---	---	---	---	---	---	------	---

**SPANISH FOR NATIVE SPEAKERS I**

17	60.9	73.9	71.3	70.8	76.5	58.8	68.1	84.6
----	------	------	------	------	------	------	------	------

**SPANISH FOR NATIVE SPEAKERS II**

48	58.8	72.5	80.4	81.8	68.8	87.5	69.8	88.6
----	------	------	------	------	------	------	------	------

**SPANISH I**

155	77.4	84.9	80.9	80.2	83.9	87.1	72.9	84.3
-----	------	------	------	------	------	------	------	------

**SEMESTER 1 TESTS**

Number Tested	Averages				% Passing		District % Passing	
	% Items Correct	Scale Score	Course Mark	Course Mark (no ACP)	ACP	Course	ACP	Course

**SPANISH II**

285	75.6	83.7	83.1	83.0	85.6	95.4	72.2	93.0
-----	------	------	------	------	------	------	------	------

**U.S. HISTORY**

333	52.1	63.1	77.8	80.4	30.6	86.4	51.5	86.9
-----	------	------	------	------	------	------	------	------

**WORLD GEOGRAPHY**

384	52.3	71.9	74.7	75.1	60.2	75.8	48.7	86.7
-----	------	------	------	------	------	------	------	------

**WORLD GEOGRAPHY PRE-AP**

143	60.4	73.6	75.4	75.7	69.9	74.8	75.0	94.9
-----	------	------	------	------	------	------	------	------

**WORLD HISTORY**

315	48.2	70.1	80.4	82.2	48.6	95.6	48.3	90.0
-----	------	------	------	------	------	------	------	------

**WORLD HISTORY PRE-AP**

144	68.9	79.3	85.9	87.0	82.6	100.0	65.5	95.0
-----	------	------	------	------	------	-------	------	------

**SEMESTER 2 TESTS**

Number Tested	Averages				% Passing		District % Passing	
	% Items Correct	Scale Score	Course Mark	Course Mark (no ACP)	ACP	Course	ACP	Course

**SPANISH II**

239	80.3	86.9	83.5	82.9	87.9	95.4	76.5	89.2
-----	------	------	------	------	------	------	------	------

**U.S. HISTORY**

--	--	--	--	--	--	--	--	--

**WORLD GEOGRAPHY**

352	55.2	73.1	74.9	75.2	68.8	82.1	57.7	82.9
-----	------	------	------	------	------	------	------	------

**WORLD GEOGRAPHY PRE-AP**

140	63.2	75.5	78.5	79.1	78.6	87.9	79.5	94.5
-----	------	------	------	------	------	------	------	------

**WORLD HISTORY**

300	57.1	71.4	77.0	78.0	60.7	84.7	58.5	85.3
-----	------	------	------	------	------	------	------	------

**WORLD HISTORY PRE-AP**

144	71.5	78.6	86.5	87.8	84.0	100.0	65.4	94.3
-----	------	------	------	------	------	-------	------	------