

# DATA PACKET

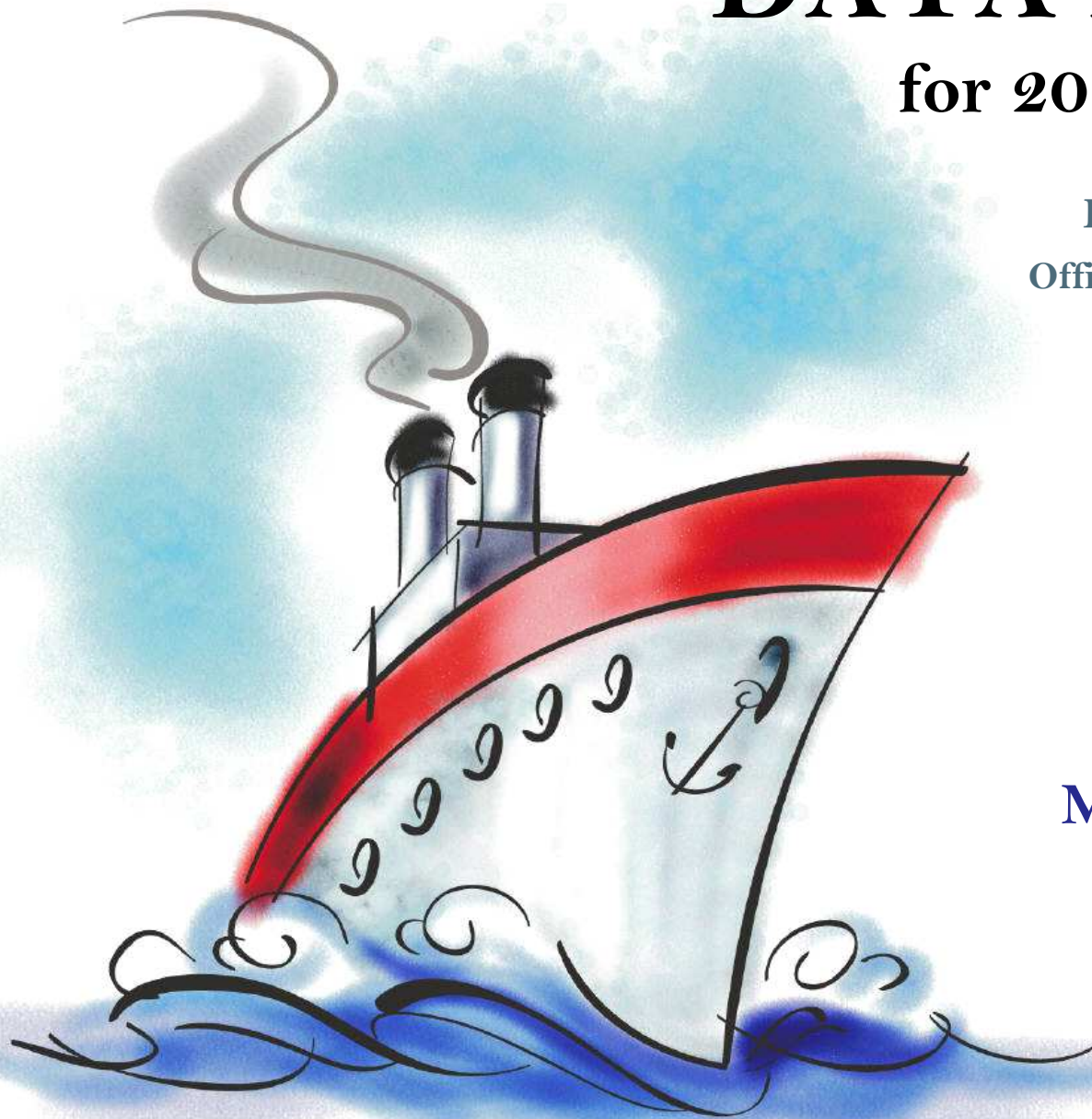
for 2014-15 planning

Evaluation & Assessment  
Office of Institutional Research  
<http://mydata.dallasisd.org>  
[OIR@dallasisd.org](mailto:OIR@dallasisd.org)

September 5, 2014

School Number 52

**JOHN B. HOOD  
MIDDLE SCHOOL**



Dallas Independent School District

2. Contents ..... Table of Contents

**STUDENTS AND STAFF**

- 5. Summary ..... Summary of Student and Teacher Statistics
- 7. Enroll (2) ..... Enrollment Statistics by Select Student Group
- 9. Teachers ..... Teacher Statistics

**STAAR (English)**

- 10. Reading (3-8) .... STAAR 3-8 Reading in English
- 18. Math (3-8) ..... STAAR 3-8 Mathematics in English
- 26. Science (3-8) ..... STAAR 3-8 Science in English

**STAAR L**

- 34. Math (3-8) ..... STAAR L 3-8 Mathematics
- 42. SS (3-8) ..... STAAR L 3-8 Social Studies

**STAAR M**

- 46. Reading (3-8) .... STAAR M 3-8 Reading
- 54. Math (3-8) ..... STAAR M 3-8 Mathematics
- 62. SS (3-8) ..... STAAR M 3-8 Social Studies

**ENGLISH PROFICIENCY**

- 66. WMLS ..... Woodcock-Muñoz Language Survey

**LOCAL ASSESSMENT**

- 68. ACP ..... Assessments of Course Performance

3. Notes ..... Notes and Data Descriptions

- 6. Enroll (1) ..... Enrollment Statistics by Ethnicity
- 8. Attendance ..... Student Attendance Statistics

- 14. Writing (3-8) ..... STAAR 3-8 Writing in English
- 22. Math (EOC) ..... STAAR EOC Mathematics
- 30. SS (3-8) ..... STAAR 3-8 Social Studies in English

38. Science (3-8) ..... STAAR L 3-8 Science

- 50. Writing (3-8) ..... STAAR M 3-8 Writing
- 58. Science (3-8) ..... STAAR M 3-8 Science

67. TELPAS ..... Texas English Language Proficiency Assessment System

## **2013-14 SCHOOL SUMMARY**

- Student percentages are computed as the percentage of total student enrollment.
- Additional statistics are available in ENROLLMENT and TEACHER reports.
- Race/ethnic categories are based on the newest federal standards for ethnicity and race reporting, though some categories have been combined because of small group sizes. Students reporting their ethnicity as “Hispanic” are not counted in any race category.
- “Economically disadvantaged” students are those who qualify for free or reduced-price lunch through the federal government's program.
- Teacher demographics and assignments are from the district's Public Education Information Management System (PEIMS) submission to the TEA.

## **ENROLLMENT**

- Statistics are based on the school's enrollment at the end of the fifth six-weeks grading period.
- “Economically disadvantaged” students are those receiving free or reduced-price lunches.
- “New” students were new to the district in 2013-14. They are counted as new if not enrolled in a district campus before the last day of the 2012-13 school year.
- The “retention rate” is the percentage of students in the same grade at the end of the fifth six-weeks grading period for both 2012-13 and 2013-14.

## **ATTENDANCE**

- Statistics are based on student attendance through the end of the sixth six-weeks grading period (the end of the school year).
- “Average daily membership” is the total number of school days students were ENROLLED divided by the number of school days in the year.
- The “average daily attendance” number (N) is the total number of school days students were IN ATTENDANCE divided by the number of school days in the year. The “average daily attendance” percentage (%) is the average attendance rate. For each student, the number of days attended is divided by the number of days enrolled. This rate is then averaged across students.
- The number (N) of “yearly transactions” is the total number of transfer and withdrawal transactions in the school year. The percentage (%) is the number of transactions divided by “average daily membership,” which gives (on average) the percentage of the membership associated with a transaction.
- “Continuously enrolled” students are enrolled and in attendance for a minimum number of instructional days in at least one course at the school between the beginning of the school year and the first day of the main STAAR testing period. The minimum number varies depending on the school year's calendar, but is typically around 130 days.
- The “stability rate” is the number of continuously enrolled students divided by “average daily membership.”

## **TEACHERS**

- Teacher demographics and assignments are from the district's Public Education Information Management System (PEIMS) submission to the TEA.
- Teacher absences counted towards the average DO NOT include vacation days (coded as VAC in personnel database).
- Retention rate for a school year is computed with numerator “# of teachers assigned to the school both that year and the year prior” and denominator “# of teachers assigned to the school for the prior year.” That is, the retention rate is the percentage of the prior year's teachers who continued at the school.

### **STAAR, STAAR L, and STAAR M**

- Cells marked with an asterisk (\*) indicate five or fewer students were tested. Blank cells indicate no students were tested.
- Student group assignments are from the district's Public Education Information Management System (PEIMS) submission to the TEA.
- STAAR statistics are based on results from standard STAAR only. STAAR L and STAAR M statistics are computed separately, following TEA reporting practice.
- “Percentage Satisfactory” is the percentage of students achieving Level 2 (Satisfactory) or Level 3 (Advanced).
- Statistics by reporting category are averages for all students (across student groups and genders).
- An “average percentage correct” is computed as follows: for each student, divide the number of items correctly answered by the total number of items in the test section, then average the resulting percentages across all students. For short answers on EOC English tests, an “average rating” is presented; STAAR EOC short answers are rated on a scale of 0 to 3. For written compositions on writing tests, “average score points” is presented. Additional details provided in report footnotes.
- Reading and mathematics statistics for SSI grades 5 and 8 are based on scores cumulative through the second administration.

### **TELPAS**

- Students are counted as having tested if any one of the four domains is rated. Because a TELPAS composite rating is not assigned to a student unless all four domains are rated, the number of TELPAS composite ratings may be smaller than the number tested.
- If a student's composite rating did not increase at least one level from 2013 to 2014, the TEA did not report the 2013 composite rating.
- If a student is rated as advanced high in 2014, the TEA does not differentiate between the advanced and advanced high levels from 2013.

### **ACP**

- Cells marked with an asterisk (\*) indicate five or fewer students were tested. Blank cells indicate no students were tested.
- The ACPs are semester exams administered in grades K-12. Not all courses have ACPs. In MIDDLE and HIGH school, ACP results account for a portion of students' final semester grades (10% and 15% respectively). “Average course mark (no ACP)” is computed from semester grades before factoring in ACP scores. In ELEMENTARY school, ACP results account for 5% of students' semester grades for core courses; course-grade statistics are not reported in data packets for elementary grades.
- Raw scores on the ACPs (percentage of items correct) are scaled each year to maintain similar annual passing rates for the district.
- A scale score of at least 70 percent is required to pass an ACP. A course mark of at least 70 percent is required to pass a course.
- Statistics are computed separately for Semester 1 and Semester 2 tests; time of administration during the school year is not relevant. Results from tests written for different school years are not combined.

**STUDENT ENROLLMENT**

Grade	Enrollment
6	335
7	332
8	306
ALL	973

**STUDENT AND TEACHER RACE/ETHNICITY**

Ethnicity/Race	Students		Teachers	
	Number	Percent	Number	Percent
Black/African American	157	16.1	42	72.4
American Indian/Alaska Native	1	0.1	*	*
Asian/Hawaiian/Pacific Islander	0	0.0	*	*
Hispanic	807	82.9	1	1.7
White	8	0.8	14	24.1
Multiple	0	0.0	0	0.0
Other* (teachers only)	—	—	1	1.7
Not reported (students only)	0	0.0	—	—

\*For teachers, "Other" category includes American Indian/Alaska Native and Asian/Hawaiian/Pacific Islander.

**SELECT STUDENT GROUP ENROLLMENT**

Group	Number	Percent
At-Risk	868	89.2
Economically disadvantaged	909	93.4
Limited English proficient (LEP)	473	48.6
Special education	95	9.8
Talented and Gifted (TAG)	94	9.7

Grade	Year	Enrollment	African American		American Indian		Asian		Hispanic		White		Multiple category	
			N	%	N	%	N	%	N	%	N	%	N	%
6	2012	461	90	19.5	1	0.2	1	0.2	365	79.2	4	0.9	0	0.0
	2013	331	57	17.2	1	0.3	0	0.0	270	81.6	3	0.9	0	0.0
	2014	335	47	14.0	0	0.0	0	0.0	284	84.8	4	1.2	0	0.0
7	2012	496	114	23.0	1	0.2	1	0.2	370	74.6	6	1.2	2	0.4
	2013	296	42	14.2	0	0.0	0	0.0	251	84.8	2	0.7	1	0.3
	2014	332	57	17.2	1	0.3	0	0.0	273	82.2	1	0.3	0	0.0
8	2012	470	88	18.7	3	0.6	1	0.2	375	79.8	3	0.6	0	0.0
	2013	292	52	17.8	0	0.0	0	0.0	235	80.5	3	1.0	0	0.0
	2014	306	53	17.3	0	0.0	0	0.0	250	81.7	3	1.0	0	0.0
6-8	2012	1,427	292	20.5	5	0.4	3	0.2	1,110	77.8	13	0.9	2	0.1
	2013	919	151	16.4	1	0.1	0	0.0	756	82.3	8	0.9	1	0.1
	2014	973	157	16.1	1	0.1	0	0.0	807	82.9	8	0.8	0	0.0

Grade	Year	Enrollment	Economically Disadvantaged		LEP		Special Education		At Risk		TAG		New (to District)		Gender		Retention Rate (%)
			N	%	N	%	N	%	N	%	N	%	N	%	% Male	% Female	
6	2012	461	452	98.0	244	52.9	38	8.2	359	77.9	50	10.8	39	8.5	52.5	47.5	1.1
	2013	331	320	96.7	169	51.1	35	10.6	287	86.7	38	11.5	22	6.6	51.1	48.9	0.3
	2014	335	309	92.2	193	57.6	35	10.4	307	91.6	32	9.6	25	7.5	51.0	49.0	3.0
7	2012	496	484	97.6	181	36.5	69	13.9	338	68.1	51	10.3	52	10.5	51.6	48.4	1.8
	2013	296	288	97.3	174	58.8	24	8.1	242	81.8	29	9.8	15	5.1	55.1	44.9	3.4
	2014	332	309	93.1	141	42.5	36	10.8	293	88.3	34	10.2	22	6.6	51.8	48.2	1.2
8	2012	470	441	93.8	171	36.4	56	11.9	337	71.7	39	8.3	29	6.2	58.1	41.9	2.1
	2013	292	280	95.9	100	34.2	45	15.4	209	71.6	29	9.9	12	4.1	53.1	46.9	2.1
	2014	306	291	95.1	139	45.4	24	7.8	268	87.6	28	9.2	21	6.9	56.2	43.8	0.7
6-8	2012	1,427	1,377	96.5	596	41.8	163	11.4	1,034	72.5	140	9.8	120	8.4	54.0	46.0	1.7
	2013	919	888	96.6	443	48.2	104	11.3	738	80.3	96	10.4	49	5.3	53.0	47.0	1.8
	2014	973	909	93.4	473	48.6	95	9.8	868	89.2	94	9.7	68	7.0	52.9	47.1	1.6

Grade	Year	Average Daily Membership		Average Daily Attendance				Yearly Transactions			Continuously Enrolled		Stability Rate	
		N	District	N	%	District N	District %	N	%	District %	N	District	%	District
6	2012	455	10,683	439	96.3	10,315	96.6	91	20.0	17.6	401	9,420	88.1	88.2
	2013	328	11,463	317	96.8	11,062	96.5	59	18.0	21.1	290	10,320	88.4	90.0
	2014	328	10,808	316	96.3	10,413	96.3	56	17.1	20.0	300	9,554	91.6	88.4
7	2012	490	10,204	466	95.0	9,727	95.3	92	18.8	23.8	397	8,576	81.0	84.0
	2013	299	10,542	289	96.5	10,116	96.0	59	19.7	24.5	267	9,357	89.3	88.8
	2014	332	11,195	317	95.5	10,729	95.8	58	17.5	22.1	293	9,852	88.2	88.0
8	2012	480	10,369	457	95.2	9,838	94.9	52	10.8	15.5	404	8,711	84.1	84.0
	2013	294	9,955	281	95.8	9,486	95.3	35	11.9	17.6	255	8,664	86.9	87.0
	2014	303	10,449	290	95.5	9,970	95.4	30	9.9	13.1	275	9,097	90.7	87.1
6-8	2012	1,426	31,256	1,362	95.5	29,880	95.6	235	16.5	18.9	1,202	26,707	84.3	85.4
	2013	920	31,960	887	96.4	30,665	96.0	153	16.6	21.1	812	28,341	88.2	88.7
	2014	963	32,451	922	95.8	31,112	95.9	144	15.0	18.5	868	28,503	90.1	87.8



Teachers: 58

**DISTRIBUTIONS**

Ethnicity/Race	Number	Percentage
African American	42	72.4
Hispanic	1	1.7
White	14	24.1
Multiple	0	0.0
Other	1	1.7

Gender	Number	Percentage
Female	45	77.6
Male	13	22.4

**ATTENDANCE / RETENTION**

	Average Absences	Retention Rate
2011-12	7.6	—
2012-13	7.2	52.7
2013-14	8.5	72.1

**YEARS EXPERIENCE**

Years	Number	Percentage
Beginning (0)	11	19.0
1	1	1.7
2	3	5.2
3	1	1.7
4	0	0.0
5	6	10.3
1-3	5	8.6
More than 3	42	72.4
1 - 5	11	19.0
6 - 10	7	12.1
11 - 20	24	41.4
More than 20	5	8.6

**PERCENTAGE SATISFACTORY (Levels 2 or 3)**

Grade	Year	White	African Amer	Hispanic	Econ Disadv	Special Educ	LEP	At Risk	Migrant	Male	Female	All	District	Number Tested (All Students)
6	2012	*	68.3	54.9	57.2	50.0	45.4	47.2		56.4	59.1	57.7	63.5	433
	2013	*	41.3	55.5	52.9	14.3	44.9	38.9	*	52.3	54.6	53.4	57.7	305
	2014	*	55.3	53.8	54.4	*	49.2	48.4		51.9	57.1	54.5	63.1	303
7	2012	*	71.0	65.2	65.7	50.0	46.2	53.5		64.8	67.1	66.0	67.5	432
	2013	*	73.0	54.9	58.1	*	48.0	49.8		50.3	66.7	57.8	67.3	277
	2014		54.3	61.7	61.5	16.7	42.5	46.3		54.1	66.4	60.3	60.5	300
8	2012	*	62.7	70.0	69.1	62.5	50.0	57.5		68.3	69.4	68.7	71.3	435
	2013	*	83.7	89.4	88.5	50.0	81.9	82.7		87.7	89.6	88.6	82.7	255
	2014	*	79.2	78.6	79.6	*	66.4	72.5		75.8	82.9	79.0	81.5	290
6-8	2012	58.3	67.6	63.4	63.9	56.3	46.9	52.6		63.3	65.1	64.2	67.4	1,300
	2013	85.7	65.1	65.3	65.4	33.3	53.2	54.7	*	62.2	69.2	65.6	68.6	837
	2014	85.7	63.6	64.3	65.2	15.4	52.3	55.2		60.9	68.2	64.4	68.2	893

NUMBER TESTED IN GRADES 6-8													
2012	12	250	1,029	1,244	32	539	852		687	613	1,300	29,211	
2013	7	126	701	809	18	432	558	2	434	403	837	29,692	
2014	7	132	751	822	13	436	659		465	428	893	30,015	

**NUMBER UNSATISFACTORY (Level 1)**

Grade	Year	White	African Amer	Hispanic	Econ Disadv	Special Educ	LEP	At Risk	Migrant	Male	Female	All	District	Number Tested (All Students)
6	2012	*	26	156	181	3	125	159		98	85	183	3,673	433
	2013	*	27	114	139	6	98	124	*	73	69	142	4,523	305
	2014	*	17	120	124	*	92	130		75	63	138	3,679	303
7	2012	*	27	115	143	5	84	126		75	72	147	3,070	432
	2013	*	10	107	113	*	89	103		75	42	117	3,215	277
	2014		21	97	106	5	73	109		68	51	119	4,075	300
8	2012	*	28	106	125	6	77	119		79	57	136	2,786	435
	2013	*	7	22	28	4	15	26		16	13	29	1,586	255
	2014	*	10	51	56	*	43	56		39	22	61	1,797	290
6-8	2012	5	81	377	449	14	286	404		252	214	466	9,529	1,300
	2013	1	44	243	280	12	202	253	*	164	124	288	9,324	837
	2014	1	48	268	286	11	208	295		182	136	318	9,551	893

NUMBER TESTED IN GRADES 6-8													
2012	12	250	1,029	1,244	32	539	852			687	613	1,300	29,211
2013	7	126	701	809	18	432	558	2		434	403	837	29,692
2014	7	132	751	822	13	436	659			465	428	893	30,015

PERCENTAGE ADVANCED (Level 3)

Grade	Year	White	African Amer	Hispanic	Econ Disadv	Special Educ	LEP	At Risk	Migrant	Male	Female	All	District	Number Tested (All Students)
6	2012	*	3.7	4.0	3.8	0.0	3.1	2.3		2.7	5.3	3.9	8.3	433
	2013	*	0.0	7.8	6.8	0.0	4.5	3.9	*	5.2	8.6	6.9	11.3	305
	2014	*	2.6	2.7	2.6	*	1.1	0.8		1.9	3.4	2.6	7.1	303
7	2012	*	3.2	9.1	7.7	0.0	3.2	3.0		6.6	8.7	7.6	10.3	432
	2013	*	0.0	3.0	2.6	*	0.6	1.0		2.0	3.2	2.5	8.7	277
	2014		2.2	5.5	4.7	0.0	0.0	1.0		4.1	5.9	5.0	10.0	300
8	2012	*	2.7	8.2	6.7	6.3	1.3	1.8		4.8	10.2	7.1	9.9	435
	2013	*	7.0	14.4	13.5	0.0	2.4	4.0		10.8	16.0	13.3	15.5	255
	2014	*	2.1	6.3	5.8	*	1.6	1.0		5.6	5.4	5.5	13.1	290
6-8	2012	0.0	3.2	7.1	6.0	3.1	2.6	2.3		4.7	8.0	6.2	9.5	1,300
	2013	14.3	2.4	8.1	7.4	0.0	2.5	2.9	*	5.8	9.2	7.4	11.7	837
	2014	0.0	2.3	4.8	4.4	0.0	0.9	0.9		3.9	4.9	4.4	10.1	893

NUMBER TESTED IN GRADE 6-8													
2012	12	250	1,029	1,244	32	539	852		687	613	1,300	29,211	
2013	7	126	701	809	18	432	558	2	434	403	837	29,692	
2014	7	132	751	822	13	436	659		465	428	893	30,015	

**AVERAGE PERCENTAGE OF ITEMS CORRECT BY REPORTING CATEGORY**

Grade	Year	REPORTING CATEGORY		
		1. Understanding Across Genres (GR 3-5) 1. Understanding/Analysis Across Genres (GR 6-8)	2. Understanding/Analysis of Literary Texts	3. Understanding/Analysis of Informational Texts
6	2012	65.3	58.4	53.6
	2013	60.1	55.8	54.4
	2014	57.0	52.4	53.8
7	2012	67.8	56.6	59.4
	2013	52.2	51.8	60.1
	2014	59.2	54.6	51.6
8	2012	66.6	58.0	59.7
	2013	71.3	70.7	63.4
	2014	64.9	61.7	59.7
6-8	2012	66.6	57.7	57.6
	2013	60.9	59.0	59.1
	2014	60.3	56.1	55.0

**PERCENTAGE SATISFACTORY (Levels 2 or 3)**

Grade	Year	White	African Amer	Hispanic	Econ Disadv	Special Educ	LEP	At Risk	Migrant	Male	Female	All	District	Number Tested (All Students)
7	2012	*	54.3	53.8	53.3	30.0	32.5	34.9		48.6	57.3	53.0	59.2	430
	2013	*	51.3	41.8	43.0	*	34.1	33.5		35.8	52.3	43.4	57.1	279
	2014		51.1	42.5	43.3	*	17.2	25.6		30.9	56.3	43.7	54.6	300

NUMBER TESTED IN GRADE 7													
2012	5	92	329	415	10	157	269		210	220	430	9,456	
2013	2	39	237	272	5	170	206		151	128	279	9,785	
2014		45	254	275	5	128	203		149	151	300	10,339	

**NUMBER UNSATISFACTORY (Level 1)**

Grade	Year	White	African Amer	Hispanic	Econ Disadv	Special Educ	LEP	At Risk	Migrant	Male	Female	All	District	Number Tested (All Students)
7	2012	*	42	152	194	7	106	175		108	94	202	3,859	430
	2013	*	19	138	155	*	112	137		97	61	158	4,198	279
	2014		22	146	156	*	106	151		103	66	169	4,690	300

NUMBER TESTED IN GRADE 7													
2012	5	92	329	415	10	157	269		210	220	430	9,456	
2013	2	39	237	272	5	170	206		151	128	279	9,785	
2014		45	254	275	5	128	203		149	151	300	10,339	

**PERCENTAGE ADVANCED (Level 3)**

Grade	Year	White	African Amer	Hispanic	Econ Disadv	Special Educ	LEP	At Risk	Migrant	Male	Female	All	District	Number Tested (All Students)
7	2012	*	0.0	1.2	1.0	0.0	0.0	0.0		1.0	0.9	0.9	3.4	430
	2013	*	0.0	0.0	0.0	*	0.0	0.0		0.0	0.0	0.0	1.5	279
	2014		0.0	0.0	0.0	*	0.0	0.0		0.0	0.0	0.0	3.0	300

NUMBER TESTED IN GRADE 7													
2012	5	92	329	415	10	157	269		210	220	430	9,456	
2013	2	39	237	272	5	170	206		151	128	279	9,785	
2014		45	254	275	5	128	203		149	151	300	10,339	



**AVERAGE PERCENTAGE OF ITEMS CORRECT BY REPORTING CATEGORY**

Grade	Year	REPORTING CATEGORY			
		1. Composition <sup>1</sup> GR 4: Personal Narrative GR 7: Expository	1. Composition <sup>1</sup> GR 4: Expository GR 7: Personal Narrative	2. Revision	3. Editing
7	2012	1.7	2.2	63.6	56.0
	2013	3.5	4.3	58.4	54.8
	2014	3.4	4.1	59.7	51.1

<sup>1</sup>Average score points (range 0-8). A STAAR composition is rated twice on a scale of 1 to 4, and the ratings are summed to determine score points for the composition. Score point scale: 0=Non-scorable; 2=Very Limited; 3=between Very Limited and Basic; 4=Basic; 5=between Basic and Satisfactory; 6=Satisfactory; 7=between Satisfactory and Accomplished; 8=Accomplished

**PERCENTAGE SATISFACTORY (Levels 2 or 3)**

Grade	Year	White	African Amer	Hispanic	Econ Disadv	Special Educ	LEP	At Risk	Migrant	Male	Female	All	District	Number Tested (All Students)
6	2012	*	42.2	66.7	61.4	16.7	67.6	59.9		63.3	60.2	61.8	66.4	427
	2013	*	46.8	67.1	64.4	11.1	63.6	53.0	*	58.7	69.3	63.9	60.6	305
	2014	*	42.1	57.3	56.2	*	55.2	48.2		55.6	55.2	55.4	64.3	296
7	2012	*	30.8	55.5	49.6	37.5	39.1	35.3		50.7	48.4	49.5	59.9	426
	2013	*	28.9	50.4	48.5	*	45.1	38.0		48.0	48.0	48.0	59.9	271
	2014		32.6	54.7	51.5	0.0	35.8	36.4		49.0	53.7	51.4	55.1	292
8	2012	*	25.0	45.4	42.2	28.6	36.0	37.1		48.1	32.8	41.5	51.9	287
	2013	*	60.0	77.2	75.3	66.7	69.4	66.7		75.2	71.9	73.6	74.0	201
	2014	*	58.5	77.6	73.5	*	71.6	70.7		70.6	78.0	74.2	73.2	209
6-8	2012	54.5	33.2	57.3	52.3	28.6	51.4	45.1		54.7	49.3	52.1	60.3	1,140
	2013	71.4	45.0	63.7	61.5	33.3	57.3	50.8	*	59.1	62.9	60.9	63.7	777
	2014	83.3	44.0	61.4	59.1	0.0	53.8	50.8		57.3	60.5	58.8	63.3	797

NUMBER TESTED IN GRADES 6-8													
2012	11	238	883	1,089	28	484	537		594	546	1,140	26,044	
2013	7	120	647	749	18	412	537	2	408	369	777	26,676	
2014	6	125	663	729	12	403	614		405	392	797	27,304	

**NUMBER UNSATISFACTORY (Level 1)**

Grade	Year	White	African Amer	Hispanic	Econ Disadv	Special Educ	LEP	At Risk	Migrant	Male	Female	All	District	Number Tested (All Students)
6	2012	*	48	113	161	5	72	118		81	82	163	3,327	427
	2013	*	25	84	105	8	64	95	*	64	46	110	4,133	305
	2014	*	22	108	116	*	78	127		67	65	132	3,478	296
7	2012	*	63	145	206	5	92	172		104	111	215	3,705	426
	2013	*	27	114	136	*	90	124		77	64	141	3,851	271
	2014		31	111	130	6	77	124		74	68	142	4,536	292
8	2012	*	48	119	152	10	71	139		84	84	168	3,319	287
	2013	*	14	37	47	2	22	45		26	27	53	1,709	201
	2014	*	17	37	52	*	31	51		32	22	54	2,001	209
6-8	2012	5	159	377	519	20	235	429		269	277	546	10,351	1,140
	2013	2	66	235	288	12	176	264	*	167	137	304	9,693	777
	2014	1	70	256	298	12	186	302		173	155	328	10,015	797

NUMBER TESTED IN GRADES 6-8													
2012	11	238	883	1,089	28	484	537			594	546	1,140	26,044
2013	7	120	647	749	18	412	537	2		408	369	777	26,676
2014	6	125	663	729	12	403	614			405	392	797	27,304

PERCENTAGE ADVANCED (Level 3)

Grade	Year	White	African Amer	Hispanic	Econ Disadv	Special Educ	LEP	At Risk	Migrant	Male	Female	All	District	Number Tested (All Students)
6	2012	*	0.0	3.2	2.6	0.0	3.2	2.7		3.2	1.9	2.6	9.8	427
	2013	*	0.0	6.3	5.4	0.0	4.0	2.0	*	2.6	8.7	5.6	8.5	305
	2014	*	0.0	3.2	2.6	*	2.9	2.0		1.3	4.1	2.7	9.6	296
7	2012	*	1.1	4.0	3.4	0.0	0.7	1.1		2.8	3.7	3.3	6.3	426
	2013	*	0.0	0.4	0.4	*	0.6	0.5		0.0	0.8	0.4	4.8	271
	2014		0.0	1.6	1.5	0.0	0.0	0.5		0.7	2.0	1.4	6.7	292
8	2012	*	0.0	0.0	0.0	0.0	0.0	0.0		0.0	0.0	0.0	0.4	287
	2013	*	0.0	1.2	0.5	0.0	0.0	0.7		1.0	1.0	1.0	0.9	201
	2014	*	0.0	0.0	0.0	*	0.0	0.0		0.0	0.0	0.0	1.0	209
6-8	2012	0.0	0.4	2.7	2.3	0.0	1.7	1.4		2.2	2.2	2.2	6.1	1,140
	2013	0.0	0.0	2.9	2.4	0.0	1.9	1.1	*	1.2	4.1	2.6	5.3	777
	2014	0.0	0.0	1.8	1.5	0.0	1.2	1.0		0.7	2.3	1.5	6.2	797

NUMBER TESTED IN GRADE 6-8													
2012	11	238	883	1,089	28	484	781		594	546	1,140	26,044	
2013	7	120	647	749	18	412	537	2	408	369	777	26,676	
2014	6	125	663	729	12	403	614		405	392	797	27,304	

**AVERAGE PERCENTAGE OF ITEMS CORRECT BY REPORTING CATEGORY**

Grade	Year	REPORTING CATEGORY				
		1. Numbers, Operations, and Quantitative Reasoning	2. Patterns, Relationships, and Algebraic Reasoning	3. Geometry and Spatial Reasoning	4. Measurement	5. Probability and Statistics
6	2012	42.9	53.4	47.8	45.3	45.6
	2013	53.6	55.8	54.1	42.3	55.2
	2014	48.6	48.3	46.4	45.8	45.2
7	2012	46.9	48.8	47.1	34.6	43.4
	2013	43.4	49.3	49.4	35.6	36.8
	2014	54.9	48.1	42.3	38.8	47.5
8	2012	38.8	37.9	35.0	34.8	42.0
	2013	45.9	51.1	48.6	45.3	41.0
	2014	46.6	45.2	50.2	42.4	54.3
6-8	2012	43.4	47.8	44.3	38.7	43.9
	2013	48.0	52.4	51.0	40.7	45.1
	2014	50.4	47.4	45.9	42.3	48.4

## PERCENTAGE SATISFACTORY (Levels 2 or 3)

Test	Year	White	African Amer	Hispanic	Econ Disadv	Special Educ	LEP	At Risk	Migrant	Male	Female	All	District
<b>ALGEBRA I (GRADE 8)</b>	<b>2012</b>		72.7	90.1	88.2	*	92.9	88.9		90.9	85.5	88.6	94.1
	<b>2013</b>		100.0	97.8	98.0	*	90.0	92.3		95.8	100.0	98.1	95.4
	<b>2014</b>	*	100.0	98.5	98.5		100.0	100.0		100.0	96.2	98.6	97.2
Tests Taken	<b>2012</b>		11	121	127	3	28	13		77	55	132	2,554
	<b>2013</b>		6	46	51	1	10	13		24	28	52	2,474
	<b>2014</b>	1	6	66	68		16	27		47	26	73	2,117

## NUMBER UNSATISFACTORY (Level 1)

Test	Year	White	African Amer	Hispanic	Econ Disadv	Special Educ	LEP	At Risk	Migrant	Male	Female	All	District
<b>ALGEBRA I (GRADE 8)</b>	<b>2012</b>		3	12	15	*	2	5		7	8	15	151
	<b>2013</b>		0	1	1	*	1	1		1	0	1	115
	<b>2014</b>	*	0	1	1		0	0		0	1	1	60
Tests Taken	<b>2012</b>		11	121	127	3	28	13		77	55	132	2,554
	<b>2013</b>		6	46	51	1	10	13		24	28	52	2,474
	<b>2014</b>	1	6	66	68		16	27		47	26	73	2,117

## PERCENTAGE ADVANCED (Level 3)

Test	Year	White	African Amer	Hispanic	Econ Disadv	Special Educ	LEP	At Risk	Migrant	Male	Female	All	District
<b>ALGEBRA I (GRADE 8)</b>	<b>2012</b>		0.0	9.1	8.7	*	3.6	4.4		6.5	10.9	8.3	19.0
	<b>2013</b>		16.7	23.9	23.5	*	10.0	7.7		25.0	21.4	23.1	24.2
	<b>2014</b>	*	33.3	6.1	7.4		0.0	3.7		8.5	7.7	8.2	28.8
Tests Taken	<b>2012</b>		11	121	127	3	28	45		77	55	132	2,554
	<b>2013</b>		6	46	51	1	10	13		24	28	52	2,474
	<b>2014</b>	1	6	66	68		16	27		47	26	73	2,117



## AVERAGE PERCENTAGE OF ITEMS CORRECT BY REPORTING CATEGORY

<b>ALGEBRA I (GRADE 8)</b>	1. Functional Relationships	2. Properties and Attributes of Functions	3. Linear Functions	4. Linear Equations and Inequalities	5. Quadratic and Other Nonlinear Functions
<b>2012</b>	58.0	48.1	56.4	52.7	53.5
<b>2013</b>	62.5	56.9	67.2	68.7	68.4
<b>2014</b>	58.4	59.0	69.3	61.0	62.9

**PERCENTAGE SATISFACTORY (Levels 2 or 3)**

Grade	Year	White	African Amer	Hispanic	Econ Disadv	Special Educ	LEP	At Risk	Migrant	Male	Female	All	District	Number Tested (All Students)
8	2012	*	29.3	60.2	54.7	25.0	43.3	40.8		58.8	48.9	54.5	54.0	420
	2013	*	72.5	84.5	82.5	57.1	75.6	73.8		85.9	79.5	82.8	65.8	250
	2014	*	63.0	79.1	75.8	*	70.8	70.2		78.6	74.4	76.7	61.9	279

NUMBER TESTED IN GRADE 8													
2012	3	75	339	391	16	141	267		240	180	420	9,431	
2013	3	40	206	240	7	82	149		128	122	250	8,998	
2014	3	46	230	256	3	120	198		154	125	279	9,466	

**NUMBER UNSATISFACTORY (Level 1)**

Grade	Year	White	African Amer	Hispanic	Econ Disadv	Special Educ	LEP	At Risk	Migrant	Male	Female	All	District	Number Tested (All Students)
8	2012	*	53	135	177	12	80	158		99	92	191	4335	420
	2013	*	11	32	42	3	20	39		18	25	43	3074	250
	2014	*	17	48	62	*	35	59		33	32	65	3605	279

NUMBER TESTED IN GRADE 8													
2012	3	75	339	391	16	141	267		240	180	420	9,431	
2013	3	40	206	240	7	82	149		128	122	250	8,998	
2014	3	46	230	256	3	120	198		154	125	279	9,466	

**PERCENTAGE ADVANCED (Level 3)**

Grade	Year	White	African Amer	Hispanic	Econ Disadv	Special Educ	LEP	At Risk	Migrant	Male	Female	All	District	Number Tested (All Students)
8	2012	*	1.3	5.6	4.6	12.5	2.1	1.5		5.4	3.9	4.8	4.2	420
	2013	*	5.0	17.0	15.4	0.0	7.3	6.0		15.6	14.8	15.2	7.1	250
	2014	*	8.7	13.5	12.9	*	5.8	3.5		16.2	8.8	12.9	11.3	279

NUMBER TESTED IN GRADE 8													
2012	3	75	339	391	16	141	267		240	180	420	9,431	
2013	3	40	206	240	7	82	149		128	122	250	8,998	
2014	3	46	230	256	3	120	198		154	125	279	9,466	

**AVERAGE PERCENTAGE OF ITEMS CORRECT BY REPORTING CATEGORY**

Grade	Year	REPORTING CATEGORY			
		1. Matter and Energy	2. Force, Motion, and Energy	3. Earth and Space	4. Organisms and Environments
8	2012	56.8	57.2	55.4	55.4
	2013	70.9	63.6	64.9	64.7
	2014	68.3	57.9	62.1	72.0

## PERCENTAGE SATISFACTORY (Levels 2 or 3)

Grade	Year	White	African Amer	Hispanic	Econ Disadv	Special Educ	LEP	At Risk	Migrant	Male	Female	All	District	Number Tested (All Students)
8	2012	*	24.0	50.7	46.0	25.0	34.3	33.3		52.1	37.8	46.0	52.5	420
	2013	*	61.0	75.0	72.4	33.3	59.8	60.8		77.3	67.8	72.7	59.3	249
	2014	*	54.3	51.5	51.8	*	37.5	42.6		57.5	45.6	52.2	53.5	278

NUMBER TESTED IN GRADE 8													
2012	3	75	339	391	16	140	267		240	180	420	9,392	
2013	3	41	204	239	9	82	148		128	121	249	8,991	
2014	3	46	229	255	3	120	197		153	125	278	9,464	

## NUMBER UNSATISFACTORY (Level 1)

Grade	Year	White	African Amer	Hispanic	Econ Disadv	Special Educ	LEP	At Risk	Migrant	Male	Female	All	District	Number Tested (All Students)
8	2012	*	57	167	211	12	92	178		115	112	227	4462	420
	2013	*	16	51	66	6	33	58		29	39	68	3656	249
	2014	*	21	111	123	*	75	113		65	68	133	4402	278

NUMBER TESTED IN GRADE8													
2012	3	75	339	391	16	140	267		240	180	420	9,392	
2013	3	41	204	239	9	82	148		128	121	249	8,991	
2014	3	46	229	255	3	120	197		153	125	278	9,464	

## PERCENTAGE ADVANCED (Level 3)

Grade	Year	White	African Amer	Hispanic	Econ Disadv	Special Educ	LEP	At Risk	Migrant	Male	Female	All	District	Number Tested (All Students)
8	2012	*	1.3	8.0	6.6	12.5	2.9	3.0		8.3	4.4	6.7	7.1	420
	2013	*	0.0	10.8	8.8	0.0	1.2	3.4		10.2	7.4	8.8	8.8	249
	2014	*	6.5	3.1	3.9	*	0.8	1.0		5.2	2.4	4.0	7.3	278

NUMBER TESTED IN GRADE 8													
2012	3	75	339	391	16	140	267		240	180	420	9,392	
2013	3	41	204	239	9	82	148		128	121	249	8,991	
2014	3	46	229	255	3	120	197		153	125	278	9,464	



## AVERAGE PERCENTAGE OF ITEMS CORRECT BY REPORTING CATEGORY

Grade	Year	REPORTING CATEGORY			
		1. History	2. Geography and Culture	3. Government and Citizenship	4. Economics, Science, Technology, and Society
8	2012	49.9	49.9	46.8	47.9
	2013	65.1	66.6	48.1	54.8
	2014	54.0	45.1	46.2	61.0

**PERCENTAGE SATISFACTORY (Levels 2 or 3)**

Grade	Year	White	African Amer	Hispanic	Econ Disadv	Special Educ	LEP	At Risk	Migrant	Male	Female	All	District	Number Tested (All Students)
6	2012			0.0	0.0		0.0	0.0		*	*	0.0	22.8	6
	2013			*	*		*	*			*	*	30.6	2
	2014			16.7	16.7		16.7	16.7		*	*	16.7	29.0	6
7	2012			*	*		*	*		*	*	*	16.9	4
	2013			0.0	0.0		0.0	*		*	*	0.0	24.3	7
	2014			25.0	28.6		25.0	25.0		*	*	25.0	24.8	8
8	2012			0.0	0.0		0.0	0.0		0.0	0.0	0.0	0.0	16
	2013			*	*		*	*			*	*	25.5	2
	2014			14.3	16.7		14.3	*		*	*	14.3	33.2	7
6-8	2012			8.0	8.3		7.7	4.3		11.8	0.0	7.7	12.7	26
	2013			18.2	18.2		18.2	22.2		*	33.3	18.2	26.8	11
	2014			19.0	21.1		19.0	21.1		25.0	11.1	19.0	29.1	21

NUMBER TESTED IN GRADES 6-8													
2012			25	24		26	23		17	9	26	620	
2013			11	11		11	9		5	6	11	634	
2014			21	19		21	19		12	9	21	722	

**NUMBER UNSATISFACTORY (Level 1)**

Grade	Year	White	African Amer	Hispanic	Econ Disadv	Special Educ	LEP	At Risk	Migrant	Male	Female	All	District	Number Tested (All Students)
6	2012			6	6		6	6		*	*	6	146	6
	2013			*	*		*	*			*	*	150	2
	2014			5	5		5	5		*	*	5	171	6
7	2012			*	*		*	*		*	*	*	177	4
	2013			7	7		7	*		*	*	7	162	7
	2014			6	5		6	6		*	*	6	176	8
8	2012			15	14		16	14		10	6	16	218	16
	2013			*	*		*	*			*	*	152	2
	2014			6	5		6	*		*	*	6	165	7
6-8	2012			23	22		24	22		15	9	24	541	26
	2013			9	9		9	7		*	4	9	464	11
	2014			17	15		17	15		9	8	17	512	21

NUMBER TESTED IN GRADES 6-8													
2012			25	24		26	23		17	9	26	620	
2013			11	11		11	9		5	6	11	634	
2014			21	19		21	19		12	9	21	722	

PERCENTAGE ADVANCED (Level 3)

Grade	Year	White	African Amer	Hispanic	Econ Disadv	Special Educ	LEP	At Risk	Migrant	Male	Female	All	District	Number Tested (All Students)
6	2012			0.0	0.0		0.0	0.0		*	*	0.0	1.1	6
	2013			*	*		*	*			*	*	2.3	2
	2014			0.0	0.0		0.0	0.0		*	*	0.0	3.3	6
7	2012			*	*		*	*		*	*	*	0.0	4
	2013			0.0	0.0		0.0	*		*	*	0.0	0.9	7
	2014			0.0	0.0		0.0	0.0		*	*	0.0	0.0	8
8	2012			0.0	0.0		0.0	0.0		0.0	0.0	0.0	0.0	16
	2013			*	*		*	*			*	*	0.0	2
	2014			0.0	0.0		0.0	*		*	*	0.0	0.4	7
6-8	2012			0.0	0.0		0.0	0.0		0.0	0.0	0.0	0.3	26
	2013			0.0	0.0		0.0	0.0		*	0.0	0.0	1.1	11
	2014			0.0	0.0		0.0	0.0		0.0	0.0	0.0	1.2	21

NUMBER TESTED IN GRADE 6-8													
2012			25	24		26	23		17	9	26	620	
2013			11	11		11	9		5	6	11	634	
2014			21	19		21	19		12	9	21	722	

## AVERAGE PERCENTAGE OF ITEMS CORRECT BY REPORTING CATEGORY

Grade	Year	REPORTING CATEGORY				
		1. Numbers, Operations, and Quantitative Reasoning	2. Patterns, Relationships, and Algebraic Reasoning	3. Geometry and Spatial Reasoning	4. Measurement	5. Probability and Statistics
6	2012	24.0	18.1	20.8	22.9	20.8
	2013	*	*	*	*	*
	2014	30.2	29.2	39.6	31.3	35.4
7	2012	*	*	*	*	*
	2013	17.6	29.7	27.1	30.4	34.3
	2014	31.7	34.6	31.3	34.4	38.8
8	2012	35.2	50.4	39.8	48.1	38.8
	2013	*	*	*	*	*
	2014	27.3	26.5	26.8	34.1	28.6
6-8	2012	32.8	41.1	35.9	40.2	32.5
	2013	21.6	35.3	35.5	34.4	29.5
	2014	29.8	30.4	32.1	33.4	34.4

**PERCENTAGE SATISFACTORY (Levels 2 or 3)**

Grade	Year	White	African Amer	Hispanic	Econ Disadv	Special Educ	LEP	At Risk	Migrant	Male	Female	All	District	Number Tested (All Students)
8	2012			57.1	53.8		53.3	53.8		33.3	83.3	53.3	14.2	15
	2013			*	*		*	*			*	*	13.3	2
	2014			0.0	0.0		0.0	*		*	*	0.0	17.0	7

NUMBER TESTED IN GRADE 8													
2012			14	13		15	13		9	6	15	226	
2013			2	2		2	2			2	2	210	
2014			7	6		7	5		4	3	7	277	

**NUMBER UNSATISFACTORY (Level 1)**

Grade	Year	White	African Amer	Hispanic	Econ Disadv	Special Educ	LEP	At Risk	Migrant	Male	Female	All	District	Number Tested (All Students)
8	2012			6	6		7	6		6	1	7	194	15
	2013			*	*		*	*			*	*	182	2
	2014			7	6		7	*		*	*	7	230	7

NUMBER TESTED IN GRADE 8													
2012			14	13		15	13		9	6	15	226	
2013			2	2		2	2			2	2	210	
2014			7	6		7	5		4	3	7	277	

**PERCENTAGE ADVANCED (Level 3)**

Grade	Year	White	African Amer	Hispanic	Econ Disadv	Special Educ	LEP	At Risk	Migrant	Male	Female	All	District	Number Tested (All Students)
8	2012			0.0	0.0		0.0	0.0		0.0	0.0	0.0	0.0	15
	2013			*	*		*	*			*	*	0.0	2
	2014			0.0	0.0		0.0	*		*	*	0.0	0.0	7

NUMBER TESTED IN GRADE 8													
2012			14	13		15	13		9	6	15	226	
2013			2	2		2	2			2	2	210	
2014			7	6		7	5		4	3	7	277	



## AVERAGE PERCENTAGE OF ITEMS CORRECT BY REPORTING CATEGORY

Grade	Year	REPORTING CATEGORY			
		1. Matter and Energy	2. Force, Motion, and Energy	3. Earth and Space	4. Organisms and Environments
8	2012	64.3	41.1	42.9	46.2
	2013	*	*	*	*
	2014	21.4	41.7	35.7	30.6

**PERCENTAGE SATISFACTORY (Levels 2 or 3)**

Grade	Year	White	African Amer	Hispanic	Econ Disadv	Special Educ	LEP	At Risk	Migrant	Male	Female	All	District	Number Tested (All Students)
8	2012			7.1	7.7		6.7	7.7		0.0	16.7	6.7	11.1	15
	2013			*	*		*	*			*	*	18.6	2
	2014			0.0	0.0		0.0	*		*	*	0.0	11.0	7

NUMBER TESTED IN GRADE 8													
2012			14	13		15	13		9	6	15	226	
2013			2	2		2	2			2	2	204	
2014			7	6		7	5		4	3	7	272	

## NUMBER UNSATISFACTORY (Level 1)

Grade	Year	White	African Amer	Hispanic	Econ Disadv	Special Educ	LEP	At Risk	Migrant	Male	Female	All	District	Number Tested (All Students)
8	2012			13	12		14	12		9	5	14	201	15
	2013			*	*		*	*			*	*	166	2
	2014			7	6		7	*		*	*	7	242	7

NUMBER TESTED IN GRADE8													
2012			14	13		15	13		9	6	15	226	
2013			2	2		2	2			2	2	204	
2014			7	6		7	5		4	3	7	272	

**PERCENTAGE ADVANCED (Level 3)**

Grade	Year	White	African Amer	Hispanic	Econ Disadv	Special Educ	LEP	At Risk	Migrant	Male	Female	All	District	Number Tested (All Students)
8	2012			0.0	0.0		0.0	0.0		0.0	0.0	0.0	0.0	15
	2013			*	*		*	*			*	*	1.0	2
	2014			0.0	0.0		0.0	*		*	*	0.0	0.4	7

NUMBER TESTED IN GRADE 8													
2012			14	13		15	13		9	6	15	226	
2013			2	2		2	2			2	2	204	
2014			7	6		7	5		4	3	7	272	

## AVERAGE PERCENTAGE OF ITEMS CORRECT BY REPORTING CATEGORY

Grade	Year	REPORTING CATEGORY			
		1. History	2. Geography and Culture	3. Government and Citizenship	4. Economics, Science, Technology, and Society
8	2012	30.3	46.1	33.3	30.8
	2013	*	*	*	*
	2014	22.1	27.4	31.0	23.2

**PERCENTAGE SATISFACTORY (Levels 2 or 3)**

Grade	Year	White	African Amer	Hispanic	Econ Disadv	Special Educ	LEP	At Risk	Migrant	Male	Female	All	District	Number Tested (All Students)
6	2012		62.5	26.7	39.1	39.1	9.1	36.4		33.3	50.0	39.1	65.5	23
	2013	*	58.3	53.8	56.0	57.7	25.0	55.0		43.8	80.0	57.7	55.9	26
	2014		42.9	42.9	42.1	42.9	33.3	36.8		46.2	37.5	42.9	51.6	21
7	2012		76.9	63.3	62.8	64.4	58.3	65.0		72.7	41.7	64.4	57.3	45
	2013		*	53.8	58.8	58.8	41.7	53.3		45.5	83.3	58.8	61.0	17
	2014	*	50.0	63.6	62.5	60.0	60.0	60.9		55.6	71.4	60.0	55.4	25
8	2012		60.0	61.1	65.4	60.7	58.3	58.3		66.7	50.0	60.7	58.0	28
	2013		71.4	91.7	87.5	87.5	88.9	86.2		87.0	88.9	87.5	74.5	32
	2014		*	69.2	62.5	62.5	60.0	64.3		40.0	100.0	62.5	75.0	16
6-8	2012		67.7	54.0	57.6	57.3	46.8	55.8		62.1	46.7	57.3	60.3	96
	2013	*	65.2	72.0	70.3	70.7	60.5	68.8		64.0	84.0	70.7	63.6	75
	2014	*	45.5	57.9	55.9	54.8	51.7	53.6		48.8	66.7	54.8	60.0	62

NUMBER TESTED IN GRADES 6-8													
2012		31	63	92	96	47	86		66	30	96	1,571	
2013	1	23	50	74	75	38	64		50	25	75	1,687	
2014	1	22	38	59	62	29	56		41	21	62	1,689	

**NUMBER UNSATISFACTORY (Level 1)**

Grade	Year	White	African Amer	Hispanic	Econ Disadv	Special Educ	LEP	At Risk	Migrant	Male	Female	All	District	Number Tested (All Students)
6	2012		3	11	14	14	10	14		10	4	14	181	23
	2013	*	5	6	11	11	6	9		9	2	11	270	26
	2014		4	8	11	12	6	12		7	5	12	281	21
7	2012		3	11	16	16	10	14		9	7	16	244	45
	2013		*	6	7	7	7	7		6	1	7	202	17
	2014	*	6	4	9	10	4	9		8	2	10	266	25
8	2012		4	7	9	11	5	10		6	5	11	199	28
	2013		2	2	4	4	2	4		3	1	4	142	32
	2014		*	4	6	6	4	5		6	0	6	128	16
6-8	2012		10	29	39	41	25	38		25	16	41	624	96
	2013	*	8	14	22	22	15	20		18	4	22	614	75
	2014	*	12	16	26	28	14	26		21	7	28	675	62

NUMBER TESTED IN GRADES 6-8													
2012		31	63	92	96	47	86		66	30	96	1,571	
2013	1	23	50	74	75	38	64		50	25	75	1,687	
2014	1	22	38	59	62	29	56		41	21	62	1,689	

PERCENTAGE ADVANCED (Level 3)

Grade	Year	White	African Amer	Hispanic	Econ Disadv	Special Educ	LEP	At Risk	Migrant	Male	Female	All	District	Number Tested (All Students)
6	2012		12.5	0.0	4.3	4.3	0.0	0.0		6.7	0.0	4.3	3.6	23
	2013	*	0.0	0.0	0.0	0.0	0.0	0.0		0.0	0.0	0.0	3.1	26
	2014		14.3	0.0	5.3	4.8	0.0	5.3		7.7	0.0	4.8	2.9	21
7	2012		0.0	0.0	0.0	0.0	0.0	0.0		0.0	0.0	0.0	1.0	45
	2013		*	0.0	5.9	5.9	0.0	0.0		9.1	0.0	5.9	3.5	17
	2014	*	0.0	0.0	0.0	0.0	0.0	0.0		0.0	0.0	0.0	3.9	25
8	2012		0.0	0.0	0.0	0.0	0.0	0.0		0.0	0.0	0.0	1.1	28
	2013		0.0	0.0	0.0	0.0	0.0	0.0		0.0	0.0	0.0	2.5	32
	2014		*	0.0	0.0	0.0	0.0	0.0		0.0	0.0	0.0	2.9	16
6-8	2012		3.2	0.0	1.1	1.0	0.0	0.0		1.5	0.0	1.0	1.9	96
	2013	*	4.3	0.0	1.4	1.3	0.0	0.0		2.0	0.0	1.3	3.0	75
	2014	*	4.5	0.0	1.7	1.6	0.0	1.8		2.4	0.0	1.6	3.3	62

NUMBER TESTED IN GRADE 6-8													
2012		31	63	92	96	47	86		66	30	96	1,571	
2013	1	23	50	74	75	38	64		50	25	75	1,687	
2014	1	22	38	59	62	29	56		41	21	62	1,689	



## AVERAGE PERCENTAGE OF ITEMS CORRECT BY REPORTING CATEGORY

Grade	Year	REPORTING CATEGORY		
		1. Understanding Across Genres (GR 3-5) 1. Understanding/Analysis Across Genres (GR 6-8)	2. Understanding/Analysis of Literary Texts	3. Understanding/Analysis of Informational Texts
6	2012	41.8	56.0	43.8
	2013	43.3	49.8	53.6
	2014	54.2	45.2	49.0
7	2012	60.8	52.4	44.9
	2013	51.5	58.1	49.0
	2014	57.0	52.7	45.9
8	2012	60.3	55.8	50.2
	2013	69.9	61.8	58.6
	2014	68.0	55.2	54.7
6-8	2012	56.1	54.2	46.2
	2013	56.5	56.8	54.7
	2014	58.9	50.8	49.2

**PERCENTAGE SATISFACTORY (Levels 2 or 3)**

Grade	Year	White	African Amer	Hispanic	Econ Disadv	Special Educ	LEP	At Risk	Migrant	Male	Female	All	District	Number Tested (All Students)
7	2012		69.2	73.3	67.4	67.4	69.6	70.0		62.9	81.8	67.4	56.7	46
	2013		*	50.0	53.3	53.3	50.0	50.0		50.0	*	53.3	63.7	15
	2014	*	46.2	63.6	60.0	57.7	60.0	54.2		52.6	71.4	57.7	62.9	26

NUMBER TESTED IN GRADE 7													
2012		13	30	43	46	23	40		35	11	46	586	
2013		3	12	15	15	12	14		10	5	15	509	
2014	1	13	11	25	26	10	24		19	7	26	599	

**NUMBER UNSATISFACTORY (Level 1)**

Grade	Year	White	African Amer	Hispanic	Econ Disadv	Special Educ	LEP	At Risk	Migrant	Male	Female	All	District	Number Tested (All Students)
7	2012		4	8	14	15	7	12		13	2	15	254	46
	2013		*	6	7	7	6	7		5	*	7	185	15
	2014	*	7	4	10	11	4	11		9	2	11	222	26

NUMBER TESTED IN GRADE 7													
2012		13	30	43	46	23	40		35	11	46	586	
2013		3	12	15	15	12	14		10	5	15	509	
2014	1	13	11	25	26	10	24		19	7	26	599	

**PERCENTAGE ADVANCED (Level 3)**

Grade	Year	White	African Amer	Hispanic	Econ Disadv	Special Educ	LEP	At Risk	Migrant	Male	Female	All	District	Number Tested (All Students)
7	2012		0.0	10.0	4.7	6.5	0.0	2.5		5.7	9.1	6.5	2.7	46
	2013		*	0.0	0.0	0.0	0.0	0.0		0.0	*	0.0	6.3	15
	2014	*	0.0	0.0	0.0	0.0	0.0	0.0		0.0	0.0	0.0	6.3	26

NUMBER TESTED IN GRADE 7													
2012		13	30	43	46	23	40		35	11	46	586	
2013		3	12	15	15	12	14		10	5	15	509	
2014	1	13	11	25	26	10	24		19	7	26	599	

**AVERAGE PERCENTAGE OF ITEMS CORRECT BY REPORTING CATEGORY**

Grade	Year	REPORTING CATEGORY		
		1. Composition <sup>1</sup> GR 4: Personal Narrative GR 7: Expository	2. Revision	3. Editing
7	2012	1.0	51.7	53.0
	2013	1.8	57.4	47.4
	2014	2.0	54.7	48.2

<sup>1</sup>Average score points (range 0-6). A STAAR M composition is rated twice on a scale of 0 to 3, and the ratings are summed to determine score points for the composition. Score point scale: 0=Non-scorable; 2=Very Limited; 3=between Very Limited and Basic; 4=Basic; 5=between Basic and Satisfactory; 6=Satisfactory

**PERCENTAGE SATISFACTORY (Levels 2 or 3)**

Grade	Year	White	African Amer	Hispanic	Econ Disadv	Special Educ	LEP	At Risk	Migrant	Male	Female	All	District	Number Tested (All Students)
6	2012		0.0	31.3	21.7	21.7	16.7	21.7		28.6	11.1	21.7	46.2	23
	2013	*	36.4	75.0	56.5	58.3	62.5	57.9		50.0	70.0	58.3	54.3	24
	2014		28.6	57.1	47.4	47.6	55.6	42.1		61.5	25.0	47.6	52.0	21
7	2012		73.3	56.7	59.6	59.6	52.0	64.3		66.7	42.9	59.6	50.5	47
	2013		*	35.7	41.2	41.2	25.0	37.5		30.0	57.1	41.2	49.4	17
	2014	*	58.3	54.5	62.5	60.0	50.0	56.5		55.6	71.4	60.0	48.8	25
8	2012	*	20.0	31.3	24.0	29.6	36.4	33.3		31.3	27.3	29.6	46.2	27
	2013		62.5	82.6	78.1	78.1	82.4	75.9		82.6	66.7	78.1	71.4	32
	2014		*	85.7	76.5	76.5	80.0	80.0		80.0	71.4	76.5	71.0	17
6-8	2012	*	40.6	43.5	41.1	42.3	39.6	44.9		49.2	29.4	42.3	47.7	97
	2013	*	50.0	67.3	62.5	63.0	59.5	60.9		61.7	65.4	63.0	58.5	73
	2014	*	45.5	66.7	61.7	60.3	62.1	57.9		63.4	54.5	60.3	56.7	63

NUMBER TESTED IN GRADES 6-8													
2012	1	32	62	95	97	48	89		63	34	97	1,554	
2013	1	22	49	72	73	37	64		47	26	73	1,659	
2014	1	22	39	60	63	29	57		41	22	63	1,684	

**NUMBER UNSATISFACTORY (Level 1)**

Grade	Year	White	African Amer	Hispanic	Econ Disadv	Special Educ	LEP	At Risk	Migrant	Male	Female	All	District	Number Tested (All Students)
6	2012		7	11	18	18	10	18		10	8	18	276	23
	2013	*	7	3	10	10	3	8		7	3	10	272	24
	2014		5	6	10	11	4	11		5	6	11	271	21
7	2012		4	13	19	19	12	15		11	8	19	276	47
	2013		*	9	10	10	9	10		7	3	10	257	17
	2014	*	5	5	9	10	5	10		8	2	10	310	25
8	2012	*	8	11	19	19	7	16		11	8	19	260	27
	2013		3	4	7	7	3	7		4	3	7	159	32
	2014		*	2	4	4	2	3		2	2	4	149	17
6-8	2012	*	19	35	56	56	29	49		32	24	56	812	97
	2013	*	11	16	27	27	15	25		18	9	27	688	73
	2014	*	12	13	23	25	11	24		15	10	25	730	63

NUMBER TESTED IN GRADES 6-8													
2012	1	32	62	95	97	48	89		63	34	97	1,554	
2013	1	22	49	72	73	37	64		47	26	73	1,659	
2014	1	22	39	60	63	29	57		41	22	63	1,684	

PERCENTAGE ADVANCED (Level 3)

Grade	Year	White	African Amer	Hispanic	Econ Disadv	Special Educ	LEP	At Risk	Migrant	Male	Female	All	District	Number Tested (All Students)
6	2012		0.0	0.0	0.0	0.0	0.0	0.0		0.0	0.0	0.0	5.5	23
	2013	*	0.0	0.0	0.0	0.0	0.0	0.0		0.0	0.0	0.0	4.9	24
	2014		0.0	0.0	0.0	0.0	0.0	0.0		0.0	0.0	0.0	3.4	21
7	2012		0.0	0.0	0.0	0.0	0.0	0.0		0.0	0.0	0.0	1.1	47
	2013		*	0.0	0.0	0.0	0.0	0.0		0.0	0.0	0.0	3.0	17
	2014	*	0.0	0.0	0.0	0.0	0.0	0.0		0.0	0.0	0.0	2.3	25
8	2012	*	0.0	0.0	0.0	0.0	0.0	0.0		0.0	0.0	0.0	1.2	27
	2013		0.0	0.0	0.0	0.0	0.0	0.0		0.0	0.0	0.0	2.2	32
	2014		*	14.3	11.8	11.8	10.0	6.7		10.0	14.3	11.8	1.9	17
6-8	2012	*	0.0	0.0	0.0	0.0	0.0	0.0		0.0	0.0	0.0	2.6	97
	2013	*	0.0	0.0	0.0	0.0	0.0	0.0		0.0	0.0	0.0	3.4	73
	2014	*	0.0	5.1	3.3	3.2	3.4	1.8		2.4	4.5	3.2	2.6	63

NUMBER TESTED IN GRADE 6-8													
2012	1	32	62	95	97	48	89			63	34	97	1,554
2013	1	22	49	72	73	37	64			47	26	73	1,659
2014	1	22	39	60	63	29	57			41	22	63	1,684



## AVERAGE PERCENTAGE OF ITEMS CORRECT BY REPORTING CATEGORY

Grade	Year	REPORTING CATEGORY				
		1. Numbers, Operations, and Quantitative Reasoning	2. Patterns, Relationships, and Algebraic Reasoning	3. Geometry and Spatial Reasoning	4. Measurement	5. Probability and Statistics
6	2012	35.7	27.8	39.1	29.0	43.5
	2013	51.2	42.1	54.9	31.3	50.0
	2014	38.4	43.8	54.8	41.3	50.0
7	2012	40.4	40.9	41.0	36.5	40.4
	2013	45.5	38.2	58.1	43.1	47.8
	2014	48.7	39.6	52.5	46.0	46.0
8	2012	28.9	35.4	35.8	35.6	37.0
	2013	40.9	52.8	46.4	40.3	53.9
	2014	47.1	61.0	52.0	52.4	53.7
6-8	2012	36.1	36.2	39.1	34.5	40.2
	2013	45.4	45.9	51.9	38.0	51.2
	2014	44.8	46.8	53.1	46.1	49.4

**PERCENTAGE SATISFACTORY (Levels 2 or 3)**

Grade	Year	White	African Amer	Hispanic	Econ Disadv	Special Educ	LEP	At Risk	Migrant	Male	Female	All	District	Number Tested (All Students)
8	2012		60.0	57.9	63.0	58.6	58.3	52.0		65.0	44.4	58.6	58.2	29
	2013		62.5	78.3	75.0	75.0	76.5	75.0		82.6	55.6	75.0	59.3	32
	2014		*	90.9	83.3	85.7	90.0	83.3		90.0	*	85.7	63.5	14

NUMBER TESTED IN GRADE 8													
2012		10	19	27	29	12	25		20	9	29	457	
2013		8	23	32	32	17	28		23	9	32	526	
2014		3	11	12	14	10	12		10	4	14	474	

**NUMBER UNSATISFACTORY (Level 1)**

Grade	Year	White	African Amer	Hispanic	Econ Disadv	Special Educ	LEP	At Risk	Migrant	Male	Female	All	District	Number Tested (All Students)
8	2012		4	8	10	12	5	12		7	5	12	191	29
	2013		3	5	8	8	4	7		4	4	8	214	32
	2014		*	1	2	2	1	2		1	*	2	173	14

NUMBER TESTED IN GRADE 8													
2012		10	19	27	29	12	25		20	9	29	457	
2013		8	23	32	32	17	28		23	9	32	526	
2014		3	11	12	14	10	12		10	4	14	474	

**PERCENTAGE ADVANCED (Level 3)**

Grade	Year	White	African Amer	Hispanic	Econ Disadv	Special Educ	LEP	At Risk	Migrant	Male	Female	All	District	Number Tested (All Students)
8	2012		0.0	0.0	0.0	0.0	0.0	0.0		0.0	0.0	0.0	0.4	29
	2013		0.0	17.4	12.5	12.5	11.8	14.3		13.0	11.1	12.5	2.5	32
	2014		*	27.3	25.0	21.4	20.0	16.7		20.0	*	21.4	3.8	14

NUMBER TESTED IN GRADE 8													
2012		10	19	27	29	12	25		20	9	29	457	
2013		8	23	32	32	17	28		23	9	32	526	
2014		3	11	12	14	10	12		10	4	14	474	

## AVERAGE PERCENTAGE OF ITEMS CORRECT BY REPORTING CATEGORY

Grade	Year	REPORTING CATEGORY			
		1. Matter and Energy	2. Force, Motion, and Energy	3. Earth and Space	4. Organisms and Environments
8	2012	51.1	53.1	57.7	51.1
	2013	63.6	72.5	68.7	62.5
	2014	73.4	77.1	73.4	69.5

## PERCENTAGE SATISFACTORY (Levels 2 or 3)

Grade	Year	White	African Amer	Hispanic	Econ Disadv	Special Educ	LEP	At Risk	Migrant	Male	Female	All	District	Number Tested (All Students)
8	2012		40.0	68.4	63.0	58.6	75.0	60.0		55.0	66.7	58.6	52.3	29
	2013		85.7	73.9	77.4	77.4	70.6	77.8		81.8	66.7	77.4	59.5	31
	2014		*	72.7	66.7	64.3	70.0	58.3		60.0	*	64.3	59.3	14

NUMBER TESTED IN GRADE 8													
2012		10	19	27	29	12	25		20	9	29	451	
2013		7	23	31	31	17	27		22	9	31	516	
2014		3	11	12	14	10	12		10	4	14	479	

**NUMBER UNSATISFACTORY (Level 1)**

Grade	Year	White	African Amer	Hispanic	Econ Disadv	Special Educ	LEP	At Risk	Migrant	Male	Female	All	District	Number Tested (All Students)
8	2012		6	6	10	12	3	10		9	3	12	215	29
	2013		1	6	7	7	5	6		4	3	7	209	31
	2014		*	3	4	5	3	5		4	*	5	195	14

NUMBER TESTED IN GRADE8													
2012		10	19	27	29	12	25		20	9	29	451	
2013		7	23	31	31	17	27		22	9	31	516	
2014		3	11	12	14	10	12		10	4	14	479	

**PERCENTAGE ADVANCED (Level 3)**

Grade	Year	White	African Amer	Hispanic	Econ Disadv	Special Educ	LEP	At Risk	Migrant	Male	Female	All	District	Number Tested (All Students)
8	2012		0.0	5.3	3.7	3.4	0.0	0.0		5.0	0.0	3.4	2.9	29
	2013		0.0	4.3	3.2	3.2	5.9	3.7		4.5	0.0	3.2	1.9	31
	2014		*	0.0	0.0	0.0	0.0	0.0		0.0	*	0.0	3.5	14

NUMBER TESTED IN GRADE 8													
2012		10	19	27	29	12	25		20	9	29	451	
2013		7	23	31	31	17	27		22	9	31	516	
2014		3	11	12	14	10	12		10	4	14	479	



## AVERAGE PERCENTAGE OF ITEMS CORRECT BY REPORTING CATEGORY

Grade	Year	REPORTING CATEGORY			
		1. History	2. Geography and Culture	3. Government and Citizenship	4. Economics, Science, Technology, and Society
8	2012	48.1	49.0	45.5	51.7
	2013	60.7	62.3	51.6	66.7
	2014	55.8	58.6	54.3	58.3

## PERCENTAGE DEMONSTRATING IMPROVEMENT


Grade	Level 1 in 2013		Level 2 in 2013		Level 3 in 2013		Levels 1-3 in 2013	
	Number Tested Both Years	Percentage Improved in 2014	Number Tested Both Years	Percentage Improved in 2014	Number Tested Both Years	Percentage Improved in 2014	Number Tested Both Years	Percentage Improved in 2014
6	14	50.0	28	60.7	0		42	57.1
7	4	*	20	70.0	0		24	66.7
8	4	*	12	50.0	0		16	37.5
ALL	22	40.9	60	61.7	0		82	56.1

**PERFORMANCE IN 2014**

Grade 2013-14  (N Rated)	Domain:	Listening		Speaking		Writing		Reading		Composite	
	2014 Level	N	%	N	%	N	%	N	%	N	%
6  (190)	Beginning	9	4.7	11	5.8	18	9.6	32	17.1	7	3.7
	Intermediate	51	26.8	40	21.1	51	27.3	79	42.2	61	32.6
	Advanced	118	62.1	126	66.3	104	55.6	51	27.3	93	49.7
	Advanced High	12	6.3	13	6.8	14	7.5	25	13.4	26	13.9
7  (138)	Beginning	18	13.0	20	14.5	52	37.7	14	10.3	11	8.1
	Intermediate	103	74.6	97	70.3	73	52.9	67	49.3	83	61.0
	Advanced	17	12.3	21	15.2	13	9.4	44	32.4	38	27.9
	Advanced High	0	0.0	0	0.0	0	0.0	11	8.1	4	2.9
8  (139)	Beginning	5	3.6	6	4.3	14	10.1	12	8.7	3	2.2
	Intermediate	9	6.5	21	15.2	23	16.7	50	36.2	23	16.8
	Advanced	38	27.5	33	23.9	39	28.3	64	46.4	75	54.7
	Advanced High	86	62.3	78	56.5	62	44.9	12	8.7	36	26.3
ALL  (467)	Beginning	32	6.9	37	7.9	84	18.1	58	12.6	21	4.6
	Intermediate	163	35.0	158	33.9	147	31.7	196	42.5	167	36.3
	Advanced	173	37.1	180	38.6	156	33.7	159	34.5	206	44.8
	Advanced High	98	21.0	91	19.5	76	16.4	48	10.4	66	14.3

**PROGRESSION FROM  
2013 TO 2014**

Number Rated Both Years  N (%) Progressed	2014 Level	2013 Level			
		Beg	Int	Adv	Adv High
175  38 (21.7%)	Beginning	6			
	Intermediate	7	47		
	Advanced	2	6	84	
	Advanced High	0	0	23	
124  5 (4.0%)	Beginning	10			
	Intermediate	1	76		
	Advanced	0	1	33	
	Advanced High	0	0	3	
120  48 (40.0%)	Beginning	0			
	Intermediate	1	18		
	Advanced	0	15	54	
	Advanced High	0	1	31	
419  91 (21.7%)	Beginning	16			
	Intermediate	9	141		
	Advanced	2	22	171	
	Advanced High	0	1	57	

 Indicates students who progressed at least one level from 2013 to 2014.

**SEMESTER 1 TESTS**

Number Tested	Averages				% Passing		District % Passing	
	% Items Correct	Scale Score	Course Mark	Course Mark (no ACP)	ACP	Course	ACP	Course

**SPANISH FOR NATIVE SPEAKERS I**

50	46.7	64.5	77.0	78.4	18.0	94.0	64.4	89.8
----	------	------	------	------	------	------	------	------

**SPANISH FOR NATIVE SPEAKERS II**

31	49.3	66.2	79.3	80.7	22.6	100.0	62.7	94.3
----	------	------	------	------	------	-------	------	------

**SPANISH I**

31	41.5	61.0	80.0	82.1	19.4	96.8	71.3	91.2
----	------	------	------	------	------	------	------	------

**ALGEBRA I PRE-AP**

71	56.5	71.0	81.5	82.7	53.5	98.6	65.2	96.3
----	------	------	------	------	------	------	------	------

**ART 7**

64	60.4	73.6	93.3	95.5	70.3	100.0	76.4	97.8
----	------	------	------	------	------	-------	------	------

**BEGINNING LANGUAGE ARTS 6 FOR ESL**

7	37.6	68.8	72.1	72.5	57.1	85.7	45.0	94.8
---	------	------	------	------	------	------	------	------

**BEGINNING LANGUAGE ARTS 7 FOR ESL**

3	*	*	*	*	*	*	39.3	*
---	---	---	---	---	---	---	------	---

**BEGINNING LANGUAGE ARTS 8 FOR ESL**

2	*	*	*	*	*	*	40.7	*
---	---	---	---	---	---	---	------	---

**INTERMEDIATE LANGUAGE ARTS 6 FOR ESL**

1	*	*	*	*	*	*	47.4	*
---	---	---	---	---	---	---	------	---

**INTERMEDIATE LANGUAGE ARTS 7 FOR ESL**

2	*	*	*	*	*	*	59.0	*
---	---	---	---	---	---	---	------	---

**INTERMEDIATE LANGUAGE ARTS 8 FOR ESL**

2	*	*	*	*	*	*	40.0	*
---	---	---	---	---	---	---	------	---

**SEMESTER 2 TESTS**

Number Tested	Averages				% Passing		District % Passing	
	% Items Correct	Scale Score	Course Mark	Course Mark (no ACP)	ACP	Course	ACP	Course

**SPANISH FOR NATIVE SPEAKERS I**

49	46.9	64.6	73.6	74.5	30.6	71.4	68.1	84.6
----	------	------	------	------	------	------	------	------

**SPANISH FOR NATIVE SPEAKERS II**

30	52.1	68.1	78.3	79.5	46.7	86.7	69.8	88.6
----	------	------	------	------	------	------	------	------

**SPANISH I**

25	37.9	58.6	74.7	76.5	16.0	64.0	72.9	84.3
----	------	------	------	------	------	------	------	------

**ALGEBRA I PRE-AP**

--	--	--	--	--	--	--	--	--

**ART 7**

70	73.4	73.7	94.9	97.2	71.4	98.6	71.9	95.8
----	------	------	------	------	------	------	------	------

**BEGINNING LANGUAGE ARTS 6 FOR ESL**

6	36.4	67.7	70.8	71.2	50.0	83.3	34.2	96.4
---	------	------	------	------	------	------	------	------

**BEGINNING LANGUAGE ARTS 7 FOR ESL**

4	*	*	*	*	*	*	45.1	*
---	---	---	---	---	---	---	------	---

**BEGINNING LANGUAGE ARTS 8 FOR ESL**

--	--	--	--	--	--	--	--	--

**INTERMEDIATE LANGUAGE ARTS 6 FOR ESL**

1	*	*	*	*	*	*	58.3	*
---	---	---	---	---	---	---	------	---

**INTERMEDIATE LANGUAGE ARTS 7 FOR ESL**

2	*	*	*	*	*	*	62.9	*
---	---	---	---	---	---	---	------	---

**INTERMEDIATE LANGUAGE ARTS 8 FOR ESL**

2	*	*	*	*	*	*	61.5	*
---	---	---	---	---	---	---	------	---

**SEMESTER 1 TESTS**

Number Tested	Averages				% Passing		District % Passing	
	% Items Correct	Scale Score	Course Mark	Course Mark (no ACP)	ACP	Course	ACP	Course

**INTERMEDIATE READING 6 FOR ESL**

11	41.2	66.7	75.1	76.0	36.4	81.8	54.7	94.9
----	------	------	------	------	------	------	------	------

**LANGUAGE ARTS 6**

206	41.9	65.1	74.6	75.7	26.7	80.6	51.1	88.5
-----	------	------	------	------	------	------	------	------

**LANGUAGE ARTS 6 PRE-AP**

93	57.4	68.0	81.7	83.2	52.7	96.8	79.1	98.0
----	------	------	------	------	------	------	------	------

**LANGUAGE ARTS 7**

208	42.3	69.1	77.4	78.3	43.8	97.1	52.3	86.0
-----	------	------	------	------	------	------	------	------

**LANGUAGE ARTS 7 PRE-AP**

99	54.7	69.8	82.6	84.0	53.5	100.0	72.1	96.8
----	------	------	------	------	------	-------	------	------

**LANGUAGE ARTS 8**

213	53.0	69.3	76.0	76.7	57.3	77.9	56.7	87.7
-----	------	------	------	------	------	------	------	------

**LANGUAGE ARTS 8 PRE-AP**

67	64.3	73.9	84.3	85.5	77.6	97.0	76.4	97.3
----	------	------	------	------	------	------	------	------

**MATHEMATICS 6**

237	30.0	67.7	76.7	77.7	29.5	88.2	45.6	86.2
-----	------	------	------	------	------	------	------	------

**MATHEMATICS 6 PRE-AP**

66	42.1	67.8	85.8	87.9	40.9	100.0	65.8	97.0
----	------	------	------	------	------	-------	------	------

**MATHEMATICS 7**

210	33.9	68.0	74.8	75.6	37.6	89.5	49.3	84.8
-----	------	------	------	------	------	------	------	------

**MATHEMATICS 7 PRE-AP**

102	59.6	67.2	77.8	79.0	43.1	99.0	64.9	96.0
-----	------	------	------	------	------	------	------	------

**SEMESTER 2 TESTS**

Number Tested	Averages				% Passing		District % Passing	
	% Items Correct	Scale Score	Course Mark	Course Mark (no ACP)	ACP	Course	ACP	Course

**INTERMEDIATE READING 6 FOR ESL**

10	54.2	60.7	74.8	76.4	40.0	70.0	56.2	91.4
----	------	------	------	------	------	------	------	------

**LANGUAGE ARTS 6**

199	45.9	66.9	72.5	73.1	37.7	67.7	56.8	85.3
-----	------	------	------	------	------	------	------	------

**LANGUAGE ARTS 6 PRE-AP**

94	44.5	64.6	77.8	79.3	25.5	80.9	64.3	96.1
----	------	------	------	------	------	------	------	------

**LANGUAGE ARTS 7**

193	55.2	69.5	74.1	74.6	50.3	81.9	59.3	82.9
-----	------	------	------	------	------	------	------	------

**LANGUAGE ARTS 7 PRE-AP**

96	66.1	73.2	80.5	81.3	70.8	99.0	79.1	96.0
----	------	------	------	------	------	------	------	------

**LANGUAGE ARTS 8**

207	60.5	72.4	73.0	73.1	65.7	79.2	72.6	85.9
-----	------	------	------	------	------	------	------	------

**LANGUAGE ARTS 8 PRE-AP**

68	61.5	74.3	83.1	84.1	77.9	100.0	75.8	96.8
----	------	------	------	------	------	-------	------	------

**MATHEMATICS 6**

231	36.8	67.9	75.0	75.8	33.8	83.0	42.2	81.1
-----	------	------	------	------	------	------	------	------

**MATHEMATICS 6 PRE-AP**

76	58.5	71.7	85.5	87.0	68.4	97.4	72.1	95.6
----	------	------	------	------	------	------	------	------

**MATHEMATICS 7**

200	49.3	71.8	76.1	76.5	59.0	88.5	50.1	79.6
-----	------	------	------	------	------	------	------	------

**MATHEMATICS 7 PRE-AP**

99	61.8	72.0	84.6	86.0	66.7	100.0	70.9	96.1
----	------	------	------	------	------	-------	------	------

**SEMESTER 1 TESTS**

Number Tested	Averages				% Passing		District % Passing	
	% Items Correct	Scale Score	Course Mark	Course Mark (no ACP)	ACP	Course	ACP	Course

**MATHEMATICS 8**

210	51.8	69.2	76.0	76.8	49.0	81.4	51.9	84.5
-----	------	------	------	------	------	------	------	------

**MS BAND: LISTENING AND MUSIC ELEMENTS**

33	75.8	88.6	90.1	81.8	100.0	63.8	98.2
----	------	------	------	------	-------	------	------

**MS HEALTH EDUCATION**

66	59.0	74.3	88.3	89.8	68.2	98.5	70.0	92.0
----	------	------	------	------	------	------	------	------

**PHYSICAL EDUCATION 6**

234	77.9	97.7	99.9	77.4	100.0	74.0	99.1
-----	------	------	------	------	-------	------	------

**PHYSICAL EDUCATION 7 & 8**

250	87.0	94.9	95.8	96.0	100.0	83.6	98.3
-----	------	------	------	------	-------	------	------

**READING 6**

288	51.5	65.3	76.1	77.3	42.4	94.1	56.3	90.6
-----	------	------	------	------	------	------	------	------

**READING 7**

136	55.7	73.4	81.9	82.8	75.0	95.6	57.9	89.8
-----	------	------	------	------	------	------	------	------

**READING 8**

110	71.9	77.8	83.2	83.8	84.5	98.2	63.6	88.7
-----	------	------	------	------	------	------	------	------

**READING MASTERY 7**

147	49.4	69.6	76.4	77.2	50.3	85.7	50.3	84.6
-----	------	------	------	------	------	------	------	------

**READING MASTERY 8**

166	57.2	72.1	74.9	75.2	68.1	88.6	63.1	85.0
-----	------	------	------	------	------	------	------	------

**SCIENCE 6**

285	45.1	67.1	76.0	77.0	35.8	84.6	59.9	91.6
-----	------	------	------	------	------	------	------	------

**SEMESTER 2 TESTS**

Number Tested	Averages				% Passing		District % Passing	
	% Items Correct	Scale Score	Course Mark	Course Mark (no ACP)	ACP	Course	ACP	Course

**MATHEMATICS 8**

206	52.8	71.7	75.1	75.5	61.7	85.4	51.9	85.4
-----	------	------	------	------	------	------	------	------

**MS BAND: LISTENING AND MUSIC ELEMENTS**

33	86.0	90.9	91.4	100.0	100.0	85.6	96.7
----	------	------	------	-------	-------	------	------

**MS HEALTH EDUCATION**

83	59.4	75.2	82.9	83.8	74.7	94.0	73.6	89.8
----	------	------	------	------	------	------	------	------

**PHYSICAL EDUCATION 6**

233	82.9	95.9	97.3	94.0	100.0	82.8	99.0
-----	------	------	------	------	-------	------	------

**PHYSICAL EDUCATION 7 & 8**

207	91.0	93.3	93.5	99.5	100.0	88.6	97.2
-----	------	------	------	------	-------	------	------

**READING 6**

291	46.5	67.3	76.8	77.9	39.2	87.9	55.7	86.3
-----	------	------	------	------	------	------	------	------

**READING 7**

149	68.2	77.8	80.8	81.1	81.9	96.6	65.6	85.6
-----	------	------	------	------	------	------	------	------

**READING 8**

108	72.6	79.4	86.0	86.7	85.2	96.3	74.8	87.8
-----	------	------	------	------	------	------	------	------

**READING MASTERY 7**

139	56.4	73.3	76.4	76.7	68.3	84.9	59.4	81.4
-----	------	------	------	------	------	------	------	------

**READING MASTERY 8**

167	64.2	76.1	77.6	77.8	81.4	89.8	71.7	85.4
-----	------	------	------	------	------	------	------	------

**SCIENCE 6**

286	48.1	66.9	79.0	80.4	38.8	90.2	57.7	87.5
-----	------	------	------	------	------	------	------	------

**SEMESTER 1 TESTS**

Number Tested	Averages				% Passing		District % Passing	
	% Items Correct	Scale Score	Course Mark	Course Mark (no ACP)	ACP	Course	ACP	Course

**SCIENCE 6 PRE-AP**

26	61.5	71.2	88.0	89.8	61.5	96.2	75.7	99.0
----	------	------	------	------	------	------	------	------

**SCIENCE 7**

233	54.9	72.4	80.4	81.3	62.7	94.4	51.0	85.7
-----	------	------	------	------	------	------	------	------

**SCIENCE 7 PRE-AP**

82	67.8	77.0	87.5	88.7	76.8	98.8	75.2	97.8
----	------	------	------	------	------	------	------	------

**SCIENCE 8 & SCIENCE 8 PRE-AP**

284	77.6	85.1	81.6	81.2	93.0	92.3	64.6	90.4
-----	------	------	------	------	------	------	------	------

**SOCIAL STUDIES 6**

320	45.4	65.9	77.1	78.3	35.0	80.0	42.8	90.4
-----	------	------	------	------	------	------	------	------

**TECHNOLOGY APPLICATIONS**

156	60.5	76.3	82.7	83.4	73.1	98.7	60.4	93.7
-----	------	------	------	------	------	------	------	------

**TEXAS STUDIES 7**

232	46.0	70.0	78.6	79.5	50.0	93.5	49.3	87.3
-----	------	------	------	------	------	------	------	------

**TEXAS STUDIES 7 PRE-AP**

86	67.4	75.6	84.9	85.9	77.9	100.0	68.1	97.3
----	------	------	------	------	------	-------	------	------

**U.S. STUDIES 8**

220	43.3	67.3	73.8	74.5	39.1	79.1	50.5	85.9
-----	------	------	------	------	------	------	------	------

**U.S. STUDIES 8 PRE-AP**

66	61.2	70.9	81.5	82.7	51.5	95.5	70.3	97.8
----	------	------	------	------	------	------	------	------

**SEMESTER 2 TESTS**

Number Tested	Averages				% Passing		District % Passing	
	% Items Correct	Scale Score	Course Mark	Course Mark (no ACP)	ACP	Course	ACP	Course

**SCIENCE 6 PRE-AP**

25	63.4	72.5	87.7	89.4	72.0	100.0	83.1	99.0
----	------	------	------	------	------	-------	------	------

**SCIENCE 7**

215	66.9	79.7	82.3	82.6	85.1	89.8	71.7	85.1
-----	------	------	------	------	------	------	------	------

**SCIENCE 7 PRE-AP**

83	74.2	80.1	87.0	87.8	88.0	98.8	81.2	96.9
----	------	------	------	------	------	------	------	------

**SCIENCE 8 & SCIENCE 8 PRE-AP**

284	76.0	83.3	79.5	79.1	93.7	90.1	64.5	88.8
-----	------	------	------	------	------	------	------	------

**SOCIAL STUDIES 6**

312	51.0	67.3	79.7	81.0	43.3	87.1	56.1	86.5
-----	------	------	------	------	------	------	------	------

**TECHNOLOGY APPLICATIONS**

157	61.7	76.5	83.2	84.0	72.0	96.8	65.5	89.7
-----	------	------	------	------	------	------	------	------

**TEXAS STUDIES 7**

217	42.7	69.3	79.4	80.5	46.1	93.1	59.9	84.9
-----	------	------	------	------	------	------	------	------

**TEXAS STUDIES 7 PRE-AP**

82	61.2	72.9	84.9	86.2	73.2	100.0	79.0	95.9
----	------	------	------	------	------	-------	------	------

**U.S. STUDIES 8**

218	61.3	74.2	77.3	77.6	73.4	88.5	54.3	84.4
-----	------	------	------	------	------	------	------	------

**U.S. STUDIES 8 PRE-AP**

65	72.9	76.1	85.9	87.0	78.5	100.0	69.5	95.0
----	------	------	------	------	------	-------	------	------