

DATA PACKET

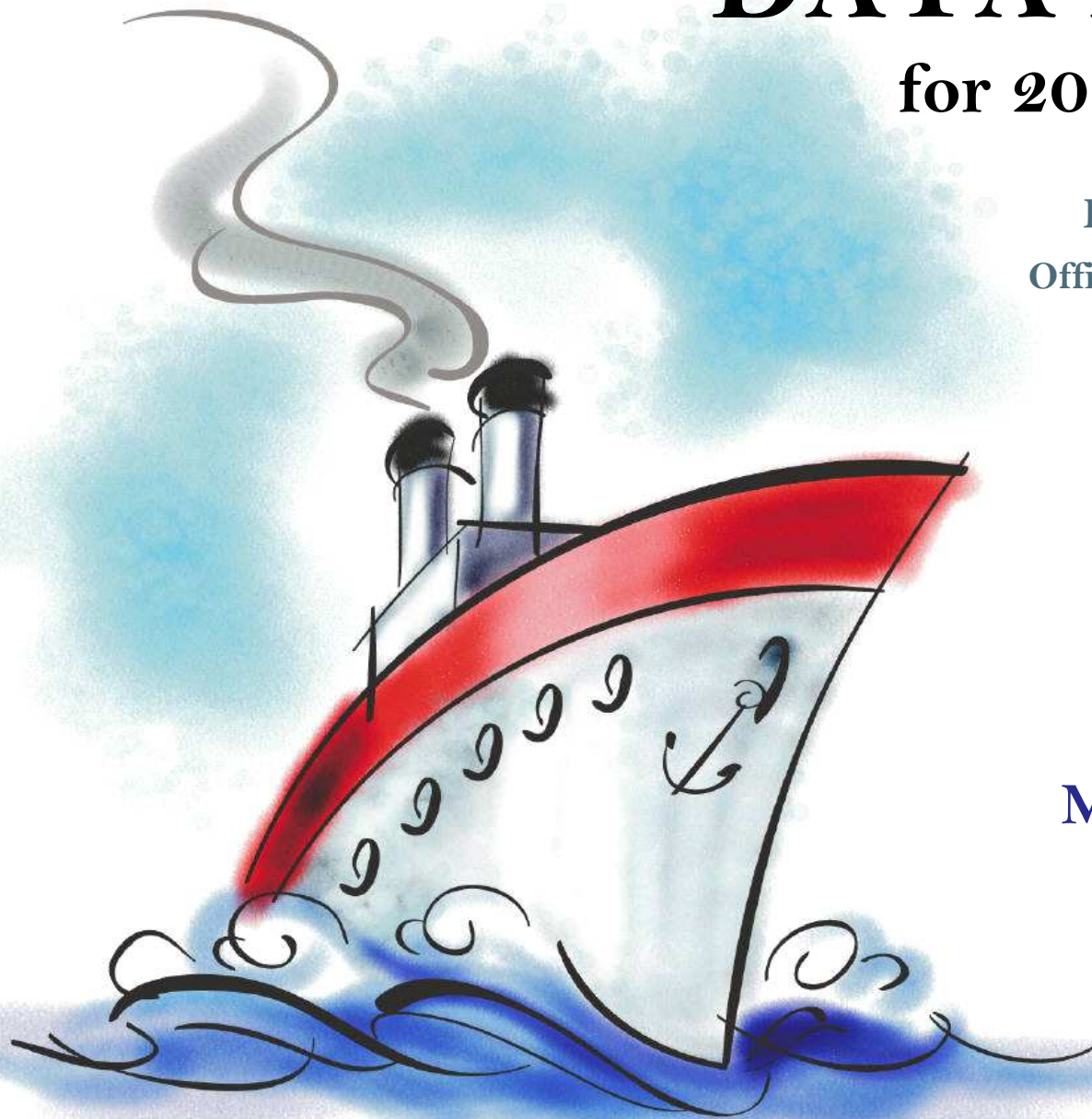
for 2014-15 planning

Evaluation & Assessment
Office of Institutional Research
<http://mydata.dallasisd.org>
OIR@dallasisd.org

September 5, 2014

School Number 53

**J.L. LONG
MIDDLE SCHOOL**



Dallas Independent School District

2. Contents Table of Contents

STUDENTS AND STAFF

- 5. Summary Summary of Student and Teacher Statistics
- 7. Enroll (2) Enrollment Statistics by Select Student Group
- 9. Teachers Teacher Statistics

STAAR (English)

- 10. Reading (3-8) STAAR 3-8 Reading in English
- 18. Math (3-8) STAAR 3-8 Mathematics in English
- 26. Science (3-8) STAAR 3-8 Science in English

STAAR L

- 34. Math (3-8) STAAR L 3-8 Mathematics
- 42. SS (3-8) STAAR L 3-8 Social Studies

STAAR M

- 46. Reading (3-8) STAAR M 3-8 Reading
- 54. Math (3-8) STAAR M 3-8 Mathematics
- 62. SS (3-8) STAAR M 3-8 Social Studies

ENGLISH PROFICIENCY

- 66. WMLS Woodcock-Muñoz Language Survey

LOCAL ASSESSMENT

- 68. ACP Assessments of Course Performance

3. Notes Notes and Data Descriptions

- 6. Enroll (1) Enrollment Statistics by Ethnicity
- 8. Attendance Student Attendance Statistics

- 14. Writing (3-8) STAAR 3-8 Writing in English
- 22. Math (EOC) STAAR EOC Mathematics
- 30. SS (3-8) STAAR 3-8 Social Studies in English

38. Science (3-8) STAAR L 3-8 Science

- 50. Writing (3-8) STAAR M 3-8 Writing
- 58. Science (3-8) STAAR M 3-8 Science

67. TELPAS Texas English Language Proficiency Assessment System

2013-14 SCHOOL SUMMARY

- Student percentages are computed as the percentage of total student enrollment.
- Additional statistics are available in ENROLLMENT and TEACHER reports.
- Race/ethnic categories are based on the newest federal standards for ethnicity and race reporting, though some categories have been combined because of small group sizes. Students reporting their ethnicity as “Hispanic” are not counted in any race category.
- “Economically disadvantaged” students are those who qualify for free or reduced-price lunch through the federal government's program.
- Teacher demographics and assignments are from the district's Public Education Information Management System (PEIMS) submission to the TEA.

ENROLLMENT

- Statistics are based on the school's enrollment at the end of the fifth six-weeks grading period.
- “Economically disadvantaged” students are those receiving free or reduced-price lunches.
- “New” students were new to the district in 2013-14. They are counted as new if not enrolled in a district campus before the last day of the 2012-13 school year.
- The “retention rate” is the percentage of students in the same grade at the end of the fifth six-weeks grading period for both 2012-13 and 2013-14.

ATTENDANCE

- Statistics are based on student attendance through the end of the sixth six-weeks grading period (the end of the school year).
- “Average daily membership” is the total number of school days students were ENROLLED divided by the number of school days in the year.
- The “average daily attendance” number (N) is the total number of school days students were IN ATTENDANCE divided by the number of school days in the year. The “average daily attendance” percentage (%) is the average attendance rate. For each student, the number of days attended is divided by the number of days enrolled. This rate is then averaged across students.
- The number (N) of “yearly transactions” is the total number of transfer and withdrawal transactions in the school year. The percentage (%) is the number of transactions divided by “average daily membership,” which gives (on average) the percentage of the membership associated with a transaction.
- “Continuously enrolled” students are enrolled and in attendance for a minimum number of instructional days in at least one course at the school between the beginning of the school year and the first day of the main STAAR testing period. The minimum number varies depending on the school year's calendar, but is typically around 130 days.
- The “stability rate” is the number of continuously enrolled students divided by “average daily membership.”

TEACHERS

- Teacher demographics and assignments are from the district's Public Education Information Management System (PEIMS) submission to the TEA.
- Teacher absences counted towards the average DO NOT include vacation days (coded as VAC in personnel database).
- Retention rate for a school year is computed with numerator “# of teachers assigned to the school both that year and the year prior” and denominator “# of teachers assigned to the school for the prior year.” That is, the retention rate is the percentage of the prior year's teachers who continued at the school.

STAAR, STAAR L, and STAAR M

- Cells marked with an asterisk (*) indicate five or fewer students were tested. Blank cells indicate no students were tested.
- Student group assignments are from the district's Public Education Information Management System (PEIMS) submission to the TEA.
- STAAR statistics are based on results from standard STAAR only. STAAR L and STAAR M statistics are computed separately, following TEA reporting practice.
- “Percentage Satisfactory” is the percentage of students achieving Level 2 (Satisfactory) or Level 3 (Advanced).
- Statistics by reporting category are averages for all students (across student groups and genders).
- An “average percentage correct” is computed as follows: for each student, divide the number of items correctly answered by the total number of items in the test section, then average the resulting percentages across all students. For short answers on EOC English tests, an “average rating” is presented; STAAR EOC short answers are rated on a scale of 0 to 3. For written compositions on writing tests, “average score points” is presented. Additional details provided in report footnotes.
- Reading and mathematics statistics for SSI grades 5 and 8 are based on scores cumulative through the second administration.

TELPAS

- Students are counted as having tested if any one of the four domains is rated. Because a TELPAS composite rating is not assigned to a student unless all four domains are rated, the number of TELPAS composite ratings may be smaller than the number tested.
- If a student's composite rating did not increase at least one level from 2013 to 2014, the TEA did not report the 2013 composite rating.
- If a student is rated as advanced high in 2014, the TEA does not differentiate between the advanced and advanced high levels from 2013.

ACP

- Cells marked with an asterisk (*) indicate five or fewer students were tested. Blank cells indicate no students were tested.
- The ACPs are semester exams administered in grades K-12. Not all courses have ACPs. In MIDDLE and HIGH school, ACP results account for a portion of students' final semester grades (10% and 15% respectively). “Average course mark (no ACP)” is computed from semester grades before factoring in ACP scores. In ELEMENTARY school, ACP results account for 5% of students' semester grades for core courses; course-grade statistics are not reported in data packets for elementary grades.
- Raw scores on the ACPs (percentage of items correct) are scaled each year to maintain similar annual passing rates for the district.
- A scale score of at least 70 percent is required to pass an ACP. A course mark of at least 70 percent is required to pass a course.
- Statistics are computed separately for Semester 1 and Semester 2 tests; time of administration during the school year is not relevant. Results from tests written for different school years are not combined.

STUDENT ENROLLMENT

Grade	Enrollment
6	397
7	429
8	413
ALL	1,239

STUDENT AND TEACHER RACE/ETHNICITY

Ethnicity/Race	Students		Teachers	
	Number	Percent	Number	Percent
Black/African American	74	6.0	6	7.4
American Indian/Alaska Native	10	0.8	*	*
Asian/Hawaiian/Pacific Islander	11	0.9	*	*
Hispanic	864	69.7	13	16.0
White	265	21.4	54	66.7
Multiple	15	1.2	1	1.2
Other* (teachers only)	—	—	7	8.6
Not reported (students only)	0	0.0	—	—

*For teachers, "Other" category includes American Indian/Alaska Native and Asian/Hawaiian/Pacific Islander.

SELECT STUDENT GROUP ENROLLMENT

Group	Number	Percent
At-Risk	861	69.5
Economically disadvantaged	834	67.3
Limited English proficient (LEP)	401	32.4
Special education	133	10.7
Talented and Gifted (TAG)	188	15.2

Grade	Year	Enrollment	African American		American Indian		Asian		Hispanic		White		Multiple category	
			N	%	N	%	N	%	N	%	N	%	N	%
6	2012	430	19	4.4	1	0.2	4	0.9	314	73.0	89	20.7	3	0.7
	2013	468	26	5.6	1	0.2	3	0.6	333	71.2	100	21.4	4	0.9
	2014	397	22	5.5	9	2.3	5	1.3	267	67.3	89	22.4	5	1.3
7	2012	406	30	7.4	0	0.0	4	1.0	293	72.2	78	19.2	1	0.2
	2013	413	26	6.3	0	0.0	3	0.7	300	72.6	80	19.4	3	0.7
	2014	429	26	6.1	0	0.0	3	0.7	299	69.7	96	22.4	5	1.2
8	2012	385	29	7.5	2	0.5	3	0.8	287	74.5	63	16.4	1	0.3
	2013	368	30	8.2	1	0.3	3	0.8	260	70.7	72	19.6	2	0.5
	2014	413	26	6.3	1	0.2	3	0.7	298	72.2	80	19.4	5	1.2
6-8	2012	1,221	78	6.4	3	0.2	11	0.9	894	73.2	230	18.8	5	0.4
	2013	1,249	82	6.6	2	0.2	9	0.7	893	71.5	252	20.2	9	0.7
	2014	1,239	74	6.0	10	0.8	11	0.9	864	69.7	265	21.4	15	1.2

Grade	Year	Enrollment	Economically Disadvantaged		LEP		Special Education		At Risk		TAG		New (to District)		Gender		Retention Rate (%)
			N	%	N	%	N	%	N	%	N	%	N	%	% Male	% Female	
6	2012	430	291	67.7	150	34.9	48	11.2	247	57.4	71	16.5	34	7.9	49.1	50.9	0.5
	2013	468	327	69.9	155	33.1	57	12.2	312	66.7	70	15.0	36	7.7	54.5	45.5	2.6
	2014	397	265	66.8	149	37.5	47	11.8	282	71.0	63	15.9	29	7.3	49.6	50.4	1.0
7	2012	406	281	69.2	87	21.4	43	10.6	213	52.5	56	13.8	43	10.6	51.0	49.0	1.0
	2013	413	274	66.3	142	34.4	48	11.6	248	60.0	62	15.0	17	4.1	47.7	52.3	1.7
	2014	429	292	68.1	136	31.7	47	11.0	301	70.2	68	15.9	25	5.8	53.6	46.4	0.0
8	2012	385	260	67.5	86	22.3	33	8.6	233	60.5	51	13.2	35	9.1	50.9	49.1	1.6
	2013	368	245	66.6	74	20.1	33	9.0	201	54.6	50	13.6	26	7.1	52.7	47.3	0.8
	2014	413	277	67.1	116	28.1	39	9.4	278	67.3	57	13.8	23	5.6	48.4	51.6	2.4
6-8	2012	1,221	832	68.1	323	26.5	124	10.2	693	56.8	178	14.6	112	9.2	50.3	49.7	1.0
	2013	1,249	846	67.7	371	29.7	138	11.0	761	60.9	182	14.6	79	6.3	51.7	48.3	1.8
	2014	1,239	834	67.3	401	32.4	133	10.7	861	69.5	188	15.2	77	6.2	50.6	49.4	1.1

Grade	Year	Average Daily Membership		Average Daily Attendance				Yearly Transactions			Continuously Enrolled		Stability Rate	
		N	District	N	%	District N	District %	N	%	District %	N	District	%	District
6	2012	428	10,683	416	97.1	10,315	96.6	51	11.9	17.6	390	9,420	91.1	88.2
	2013	462	11,463	444	96.2	11,062	96.5	58	12.6	21.1	424	10,320	91.8	90.0
	2014	398	10,808	380	95.6	10,413	96.3	33	8.3	20.0	364	9,554	91.5	88.4
7	2012	408	10,204	392	96.1	9,727	95.3	53	13.0	23.8	366	8,576	89.7	84.0
	2013	412	10,542	396	95.9	10,116	96.0	42	10.2	24.5	375	9,357	90.9	88.8
	2014	439	11,195	419	95.3	10,729	95.8	46	10.5	22.1	395	9,852	89.9	88.0
8	2012	387	10,369	372	96.0	9,838	94.9	21	5.4	15.5	352	8,711	90.9	84.0
	2013	368	9,955	354	96.1	9,486	95.3	13	3.5	17.6	336	8,664	91.2	87.0
	2014	416	10,449	396	95.2	9,970	95.4	17	4.1	13.1	385	9,097	92.5	87.1
6-8	2012	1,224	31,256	1,180	96.4	29,880	95.6	125	10.2	18.9	1,108	26,707	90.5	85.4
	2013	1,243	31,960	1,194	96.1	30,665	96.0	113	9.1	21.1	1,135	28,341	91.3	88.7
	2014	1,253	32,451	1,195	95.4	31,112	95.9	96	7.7	18.5	1,144	28,503	91.3	87.8

Teachers: 81

DISTRIBUTIONS

Ethnicity/Race	Number	Percentage
African American	6	7.4
Hispanic	13	16.0
White	54	66.7
Multiple	1	1.2
Other	7	8.6

Gender	Number	Percentage
Female	56	69.1
Male	25	30.9

ATTENDANCE / RETENTION

	Average Absences	Retention Rate
2011-12	7.3	—
2012-13	6.9	67.6
2013-14	6.2	61.7

YEARS EXPERIENCE

Years	Number	Percentage
Beginning (0)	21	25.9
1	16	19.8
2	7	8.6
3	5	6.2
4	2	2.5
5	3	3.7
1-3	28	34.6
More than 3	32	39.5
1 - 5	33	40.7
6 - 10	13	16.0
11 - 20	8	9.9
More than 20	6	7.4

PERCENTAGE SATISFACTORY (Levels 2 or 3)

Grade	Year	White	African Amer	Hispanic	Econ Disadv	Special Educ	LEP	At Risk	Migrant	Male	Female	All	District	Number Tested (All Students)
6	2012	97.7	68.8	57.1	55.8	44.8	48.3	49.5		63.8	70.2	67.1	63.5	404
	2013	96.0	73.9	64.9	63.1	37.5	55.4	52.7		72.3	74.1	73.1	57.7	432
	2014	93.0	57.9	69.1	65.6	45.5	60.9	58.3		70.9	77.7	74.3	63.1	370
7	2012	89.2	60.9	64.9	63.4	45.5	37.2	47.3		62.1	78.0	69.8	67.5	384
	2013	96.2	78.3	65.8	63.9	46.2	58.9	56.6		70.9	75.5	73.4	67.3	383
	2014	95.7	68.2	64.0	62.1	59.1	44.2	57.3		70.2	74.5	72.1	60.5	402
8	2012	93.8	63.3	75.8	73.8	50.0	54.2	65.1		75.9	80.1	78.0	71.3	373
	2013	98.6	79.2	85.1	85.7	75.0	71.4	78.8		83.3	91.7	87.3	82.7	355
	2014	97.6	80.8	78.8	77.3	56.3	61.9	71.7		81.6	84.9	83.3	81.5	395
6-8	2012	93.8	63.8	65.7	64.0	46.3	47.1	54.1		67.1	75.9	71.5	67.4	1,161
	2013	96.8	77.1	71.4	70.0	51.4	59.9	62.1		75.3	79.8	77.5	68.6	1,170
	2014	95.4	70.1	70.7	68.6	53.3	55.5	62.4		74.1	79.2	76.6	68.2	1,167

NUMBER TESTED IN GRADES 6-8													
2012	224	69	849	751	67	306	579		581	580	1,161	29,211	
2013	247	70	832	757	70	364	578		596	573	1,170	29,692	
2014	263	67	802	723	60	380	662		590	577	1,167	30,015	

NUMBER UNSATISFACTORY (Level 1)

Grade	Year	White	African Amer	Hispanic	Econ Disadv	Special Educ	LEP	At Risk	Migrant	Male	Female	All	District	Number Tested (All Students)
6	2012	2	5	126	115	16	75	100		71	62	133	3,673	404
	2013	4	6	106	107	15	66	96		64	52	116	4,523	432
	2014	6	8	76	78	12	54	88		53	42	95	3,679	370
7	2012	8	9	99	93	12	49	98		75	41	116	3,070	384
	2013	3	5	94	88	14	60	85		52	50	102	3,215	383
	2014	4	7	100	91	9	72	99		65	47	112	4,075	402
8	2012	4	11	66	62	8	38	68		45	37	82	2,786	373
	2013	1	5	38	32	5	20	38		31	14	45	1,586	355
	2014	2	5	59	58	7	43	62		35	31	66	1,797	395
6-8	2012	14	25	291	270	36	162	266		191	140	331	9,529	1,161
	2013	8	16	238	227	34	146	219		147	116	263	9,324	1,170
	2014	12	20	235	227	28	169	249		153	120	273	9,551	1,167

NUMBER TESTED IN GRADES 6-8													
2012	224	69	849	751	67	306	579		581	580	1,161	29,211	
2013	247	70	832	757	70	364	578		596	573	1,170	29,692	
2014	263	67	802	723	60	380	662		590	577	1,167	30,015	

PERCENTAGE ADVANCED (Level 3)

Grade	Year	White	African Amer	Hispanic	Econ Disadv	Special Educ	LEP	At Risk	Migrant	Male	Female	All	District	Number Tested (All Students)
6	2012	47.7	12.5	4.4	3.8	10.3	0.7	1.0		17.3	12.0	14.6	8.3	404
	2013	57.6	26.1	9.6	10.0	4.2	5.4	3.4		20.3	24.4	22.2	11.3	432
	2014	43.0	5.3	4.5	4.0	4.5	1.4	0.9		11.0	17.0	14.1	7.1	370
7	2012	40.5	0.0	7.1	7.5	4.5	2.6	2.2		8.6	19.4	13.8	10.3	384
	2013	44.9	8.7	4.7	4.1	11.5	2.1	2.6		16.2	12.3	14.1	8.7	383
	2014	41.5	9.1	7.2	5.8	0.0	2.3	2.2		14.2	17.4	15.7	10.0	402
8	2012	37.5	6.7	8.8	7.2	0.0	3.6	3.6		9.1	18.8	13.9	9.9	373
	2013	45.7	4.2	11.0	9.9	15.0	0.0	2.2		11.8	25.0	18.0	15.5	355
	2014	50.6	3.8	9.0	9.8	0.0	1.8	2.3		18.4	18.0	18.2	13.1	395
6-8	2012	42.4	5.8	6.7	6.1	6.0	2.0	2.2		11.7	16.6	14.1	9.5	1,161
	2013	50.2	12.9	8.4	8.1	10.0	3.0	2.8		16.4	20.2	18.3	11.7	1,170
	2014	44.9	6.0	7.0	6.6	1.7	1.8	1.8		14.6	17.5	16.0	10.1	1,167

NUMBER TESTED IN GRADE 6-8													
2012	224	69	849	751	67	306	579		581	580	1,161	29,211	
2013	247	70	832	757	70	364	578		596	573	1,170	29,692	
2014	263	67	802	723	60	380	662		590	577	1,167	30,015	

AVERAGE PERCENTAGE OF ITEMS CORRECT BY REPORTING CATEGORY

Grade	Year	REPORTING CATEGORY		
		1. Understanding Across Genres (GR 3-5) 1. Understanding/Analysis Across Genres (GR 6-8)	2. Understanding/Analysis of Literary Texts	3. Understanding/Analysis of Informational Texts
6	2012	69.5	65.3	60.8
	2013	69.8	69.7	65.1
	2014	65.2	65.0	66.0
7	2012	70.6	61.2	63.3
	2013	60.9	61.2	70.1
	2014	68.3	62.2	61.1
8	2012	69.5	63.1	66.0
	2013	70.3	72.7	65.3
	2014	71.5	66.4	63.5
6-8	2012	69.8	63.2	63.3
	2013	67.1	67.8	66.8
	2014	68.4	64.5	63.5

PERCENTAGE SATISFACTORY (Levels 2 or 3)

Grade	Year	White	African Amer	Hispanic	Econ Disadv	Special Educ	LEP	At Risk	Migrant	Male	Female	All	District	Number Tested (All Students)
7	2012	82.4	52.2	59.4	55.6	47.1	30.3	38.3		54.6	73.8	64.0	59.2	381
	2013	89.6	54.2	50.4	48.2	29.6	36.3	34.7		56.4	61.6	59.1	57.1	384
	2014	92.6	65.2	57.9	58.7	50.0	37.8	48.1		57.8	78.0	67.1	54.6	404

NUMBER TESTED IN GRADE 7													
2012	74	23	278	252	17	76	183		194	187	381	9,456	
2013	77	24	276	247	27	146	199		181	203	384	9,785	
2014	95	23	278	242	22	127	235		218	186	404	10,339	

NUMBER UNSATISFACTORY (Level 1)

Grade	Year	White	African Amer	Hispanic	Econ Disadv	Special Educ	LEP	At Risk	Migrant	Male	Female	All	District	Number Tested (All Students)
7	2012	13	11	113	112	9	53	113		88	49	137	3,859	381
	2013	8	11	137	128	19	93	130		79	78	157	4,198	384
	2014	7	8	117	100	11	79	122		92	41	133	4,690	404

NUMBER TESTED IN GRADE 7													
2012	74	23	278	252	17	76	183		194	187	381	9,456	
2013	77	24	276	247	27	146	199		181	203	384	9,785	
2014	95	23	278	242	22	127	235		218	186	404	10,339	

PERCENTAGE ADVANCED (Level 3)

Grade	Year	White	African Amer	Hispanic	Econ Disadv	Special Educ	LEP	At Risk	Migrant	Male	Female	All	District	Number Tested (All Students)
7	2012	16.2	0.0	1.8	2.0	0.0	0.0	1.1		1.0	8.0	4.5	3.4	381
	2013	5.2	0.0	0.0	0.0	0.0	0.0	0.0		1.7	0.5	1.0	1.5	384
	2014	17.9	4.3	1.1	1.2	0.0	0.0	0.0		2.8	8.6	5.4	3.0	404

NUMBER TESTED IN GRADE 7													
2012	74	23	278	252	17	76	183		194	187	381	9,456	
2013	77	24	276	247	27	146	199		181	203	384	9,785	
2014	95	23	278	242	22	127	235		218	186	404	10,339	

AVERAGE PERCENTAGE OF ITEMS CORRECT BY REPORTING CATEGORY

Grade	Year	REPORTING CATEGORY			
		1. Composition ¹ GR 4: Personal Narrative GR 7: Expository	1. Composition ¹ GR 4: Expository GR 7: Personal Narrative	2. Revision	3. Editing
7	2012	1.9	2.3	67.6	60.1
	2013	4.0	4.7	66.1	59.3
	2014	4.2	4.8	69.3	59.6

¹Average score points (range 0-8). A STAAR composition is rated twice on a scale of 1 to 4, and the ratings are summed to determine score points for the composition. Score point scale: 0=Non-scorable; 2=Very Limited; 3=between Very Limited and Basic; 4=Basic; 5=between Basic and Satisfactory; 6=Satisfactory; 7=between Satisfactory and Accomplished; 8=Accomplished

PERCENTAGE SATISFACTORY (Levels 2 or 3)

Grade	Year	White	African Amer	Hispanic	Econ Disadv	Special Educ	LEP	At Risk	Migrant	Male	Female	All	District	Number Tested (All Students)
6	2012	95.3	62.5	68.9	67.3	70.6	64.7	64.0		74.4	75.0	74.7	66.4	403
	2013	92.9	69.6	67.9	67.6	48.1	66.4	59.2		74.1	74.6	74.4	60.6	429
	2014	94.2	47.4	68.2	65.8	70.0	65.4	59.7		71.8	77.2	74.5	64.3	365
7	2012	88.0	52.0	64.0	63.3	48.1	49.4	49.0		65.3	71.4	68.3	59.9	391
	2013	91.1	72.7	70.1	67.8	69.2	66.0	61.5		81.8	69.0	74.9	59.9	379
	2014	91.5	81.8	68.1	70.5	70.4	56.2	61.8		75.2	74.3	74.8	55.1	397
8	2012	62.5	36.0	56.3	57.4	43.8	47.8	45.3		53.4	56.0	54.5	51.9	242
	2013	90.3	81.0	86.6	86.2	91.3	82.4	80.1		87.0	85.2	86.3	74.0	277
	2014	97.1	87.0	83.3	84.3	87.5	79.4	80.2		89.2	82.2	85.5	73.2	296
6-8	2012	90.5	48.5	63.8	63.2	57.1	56.5	53.1		65.7	69.6	67.6	60.3	1,036
	2013	91.9	74.2	73.9	72.7	68.4	69.3	66.4		80.1	74.9	77.6	63.7	1,085
	2014	93.5	73.4	72.9	73.4	74.6	66.3	67.1		77.7	77.7	77.7	63.3	1,058

NUMBER TESTED IN GRADES 6-8													
2012	169	66	785	707	77	283	569		530	506	1,036	26,044	
2013	209	66	794	725	76	352	569		562	522	1,085	26,676	
2014	214	64	749	676	63	356	641		538	520	1,058	27,304	

NUMBER UNSATISFACTORY (Level 1)

Grade	Year	White	African Amer	Hispanic	Econ Disadv	Special Educ	LEP	At Risk	Migrant	Male	Female	All	District	Number Tested (All Students)
6	2012	4	6	91	85	10	49	71		50	52	102	3,327	403
	2013	7	7	96	93	14	48	82		60	50	110	4,133	429
	2014	5	10	77	76	6	46	83		51	42	93	3,478	365
7	2012	9	12	103	95	14	39	98		70	54	124	3,705	391
	2013	7	6	81	78	8	48	74		32	63	95	3,851	379
	2014	8	4	87	70	8	53	87		54	46	100	4,536	397
8	2012	3	16	90	80	9	35	94		62	48	110	3,319	242
	2013	3	4	30	27	2	12	35		20	18	38	1,709	277
	2014	1	3	39	34	2	21	41		15	28	43	2,001	296
6-8	2012	16	34	284	260	33	123	263		182	154	336	10,351	1,036
	2013	17	17	207	198	24	108	191		112	131	243	9,693	1,085
	2014	14	17	203	180	16	120	211		120	116	236	10,015	1,058

NUMBER TESTED IN GRADES 6-8													
2012	169	66	785	707	77	283	569		530	506	1,036	26,044	
2013	209	66	794	725	76	352	569		562	522	1,085	26,676	
2014	214	64	749	676	63	356	641		538	520	1,058	27,304	

PERCENTAGE ADVANCED (Level 3)

Grade	Year	White	African Amer	Hispanic	Econ Disadv	Special Educ	LEP	At Risk	Migrant	Male	Female	All	District	Number Tested (All Students)
6	2012	39.5	6.3	6.1	5.0	8.8	5.0	5.1		17.9	9.6	13.6	9.8	403
	2013	36.4	4.3	7.7	6.6	0.0	6.3	3.5		17.2	10.7	14.2	8.5	429
	2014	41.9	5.3	8.3	7.7	0.0	4.5	2.9		17.1	16.8	17.0	9.6	365
7	2012	30.7	4.0	3.5	4.6	0.0	1.3	1.6		5.9	13.8	9.7	6.3	391
	2013	29.1	0.0	3.0	2.9	3.8	2.1	2.1		11.4	6.4	8.7	4.8	379
	2014	30.9	4.5	4.4	3.8	0.0	1.7	0.9		11.9	10.1	11.1	6.7	397
8	2012	0.0	0.0	0.5	0.5	0.0	0.0	0.0		0.8	0.0	0.4	0.4	242
	2013	0.0	0.0	1.8	1.0	0.0	0.0	1.1		2.6	0.0	1.4	0.9	277
	2014	0.0	0.0	0.4	0.9	6.3	0.0	0.0		0.7	0.6	0.7	1.0	296
6-8	2012	33.7	3.0	3.7	3.7	3.9	2.8	2.3		9.1	9.1	9.1	6.1	1,036
	2013	28.2	1.5	4.4	3.9	1.3	3.4	2.3		11.4	6.5	9.0	5.3	1,085
	2014	30.4	3.1	4.4	4.1	1.6	2.2	1.2		10.8	9.6	10.2	6.2	1,058

NUMBER TESTED IN GRADE 6-8													
2012	169	66	785	707	77	283	561		530	506	1,036	26,044	
2013	209	66	794	725	76	352	569		562	522	1,085	26,676	
2014	214	64	749	676	63	356	641		538	520	1,058	27,304	

AVERAGE PERCENTAGE OF ITEMS CORRECT BY REPORTING CATEGORY

Grade	Year	REPORTING CATEGORY				
		1. Numbers, Operations, and Quantitative Reasoning	2. Patterns, Relationships, and Algebraic Reasoning	3. Geometry and Spatial Reasoning	4. Measurement	5. Probability and Statistics
6	2012	53.4	62.2	56.4	52.9	55.8
	2013	58.9	63.1	61.2	49.6	60.5
	2014	60.7	58.4	61.2	53.4	61.4
7	2012	54.1	57.0	62.4	46.5	48.5
	2013	54.2	62.2	59.8	48.5	49.6
	2014	63.3	55.7	56.7	53.9	56.9
8	2012	46.6	40.3	37.3	39.0	44.1
	2013	55.5	58.0	49.0	51.8	53.3
	2014	53.1	53.9	53.9	44.3	55.4
6-8	2012	52.1	55.1	54.2	47.2	50.3
	2013	56.4	61.5	57.6	49.8	54.8
	2014	59.5	56.1	57.5	51.1	58.0

PERCENTAGE SATISFACTORY (Levels 2 or 3)

Test	Year	White	African Amer	Hispanic	Econ Disadv	Special Educ	LEP	At Risk	Migrant	Male	Female	All	District
ALGEBRA I (GRADE 8)	2012	96.3	*	95.0	95.2		87.5	*		93.9	97.3	95.9	94.1
	2013	100.0	*	100.0	100.0	*	*	*		100.0	100.0	100.0	95.4
	2014	100.0	*	100.0	100.0	*	*	100.0		100.0	100.0	100.0	97.2
Tests Taken	2012	54	4	60	42		8	5		49	73	122	2,554
	2013	37	3	33	30	1	2	5		34	46	80	2,474
	2014	46	3	42	34	2	5	11		47	48	95	2,117

NUMBER UNSATISFACTORY (Level 1)

Test	Year	White	African Amer	Hispanic	Econ Disadv	Special Educ	LEP	At Risk	Migrant	Male	Female	All	District
ALGEBRA I (GRADE 8)	2012	2	*	3	2		1	*		3	2	5	151
	2013	0	*	0	0	*	*	*		0	0	0	115
	2014	0	*	0	0	*	*	0		0	0	0	60
Tests Taken	2012	54	4	60	42		8	5		49	73	122	2,554
	2013	37	3	33	30	1	2	5		34	46	80	2,474
	2014	46	3	42	34	2	5	11		47	48	95	2,117

PERCENTAGE ADVANCED (Level 3)

Test	Year	White	African Amer	Hispanic	Econ Disadv	Special Educ	LEP	At Risk	Migrant	Male	Female	All	District
ALGEBRA I (GRADE 8)	2012	20.4	*	6.7	4.8		0.0	4.5		10.2	15.1	13.1	19.0
	2013	51.4	*	51.5	46.7	*	*	*		44.1	58.7	52.5	24.2
	2014	63.0	*	42.9	38.2	*	*	45.5		55.3	50.0	52.6	28.8
Tests Taken	2012	54	4	60	42		8	22		49	73	122	2,554
	2013	37	3	33	30	1	2	5		34	46	80	2,474
	2014	46	3	42	34	2	5	11		47	48	95	2,117

AVERAGE PERCENTAGE OF ITEMS CORRECT BY REPORTING CATEGORY

ALGEBRA I (GRADE 8)	1. Functional Relationships	2. Properties and Attributes of Functions	3. Linear Functions	4. Linear Equations and Inequalities	5. Quadratic and Other Nonlinear Functions
2012	66.3	60.4	64.4	58.6	61.3
2013	77.0	71.1	81.7	77.4	74.6
2014	71.3	73.4	80.8	80.3	75.7

PERCENTAGE SATISFACTORY (Levels 2 or 3)

Grade	Year	White	African Amer	Hispanic	Econ Disadv	Special Educ	LEP	At Risk	Migrant	Male	Female	All	District	Number Tested (All Students)
8	2012	96.7	41.4	48.7	47.9	13.3	30.1	33.9		59.2	54.2	56.8	54.0	361
	2013	95.8	42.3	71.5	70.4	56.5	42.4	54.6		75.7	73.5	74.6	65.8	351
	2014	95.0	52.0	59.9	58.1	52.6	33.3	46.5		73.8	61.7	67.5	61.9	388

NUMBER TESTED IN GRADE 8													
2012	61	29	265	234	15	73	189		184	177	361	9,431	
2013	71	26	249	223	23	66	174		185	166	351	8,998	
2014	80	25	274	229	19	108	215		187	201	388	9,466	

NUMBER UNSATISFACTORY (Level 1)

Grade	Year	White	African Amer	Hispanic	Econ Disadv	Special Educ	LEP	At Risk	Migrant	Male	Female	All	District	Number Tested (All Students)
8	2012	2	17	136	122	13	51	125		75	81	156	4335	361
	2013	3	15	71	66	10	38	79		45	44	89	3074	351
	2014	4	12	110	96	9	72	115		49	77	126	3605	388

NUMBER TESTED IN GRADE 8													
2012	61	29	265	234	15	73	189		184	177	361	9,431	
2013	71	26	249	223	23	66	174		185	166	351	8,998	
2014	80	25	274	229	19	108	215		187	201	388	9,466	

PERCENTAGE ADVANCED (Level 3)

Grade	Year	White	African Amer	Hispanic	Econ Disadv	Special Educ	LEP	At Risk	Migrant	Male	Female	All	District	Number Tested (All Students)
8	2012	14.8	0.0	3.4	3.4	0.0	0.0	0.5		5.4	5.1	5.3	4.2	361
	2013	36.6	3.8	3.6	3.1	4.3	0.0	2.9		10.3	11.4	10.8	7.1	351
	2014	51.2	4.0	8.8	10.5	5.3	1.9	2.3		23.5	13.9	18.6	11.3	388

NUMBER TESTED IN GRADE 8													
2012	61	29	265	234	15	73	189		184	177	361	9,431	
2013	71	26	249	223	23	66	174		185	166	351	8,998	
2014	80	25	274	229	19	108	215		187	201	388	9,466	

AVERAGE PERCENTAGE OF ITEMS CORRECT BY REPORTING CATEGORY

Grade	Year	REPORTING CATEGORY			
		1. Matter and Energy	2. Force, Motion, and Energy	3. Earth and Space	4. Organisms and Environments
8	2012	54.2	55.4	59.1	59.5
	2013	66.6	59.9	59.2	62.5
	2014	64.7	62.0	60.3	70.6

PERCENTAGE SATISFACTORY (Levels 2 or 3)

Grade	Year	White	African Amer	Hispanic	Econ Disadv	Special Educ	LEP	At Risk	Migrant	Male	Female	All	District	Number Tested (All Students)
8	2012	96.7	41.4	55.1	52.8	26.7	37.0	40.4		66.1	57.1	61.7	52.5	360
	2013	90.0	42.3	60.2	60.0	43.5	40.3	45.1		67.6	62.9	65.3	59.3	352
	2014	91.3	56.0	50.6	48.5	37.5	23.4	36.3		61.1	60.0	60.5	53.5	385

NUMBER TESTED IN GRADE 8													
2012	60	29	265	233	15	73	188		183	177	360	9,392	
2013	70	26	251	225	23	67	175		185	167	352	8,991	
2014	80	25	271	227	16	107	212		185	200	385	9,464	

NUMBER UNSATISFACTORY (Level 1)

Grade	Year	White	African Amer	Hispanic	Econ Disadv	Special Educ	LEP	At Risk	Migrant	Male	Female	All	District	Number Tested (All Students)
8	2012	2	17	119	110	11	46	112		62	76	138	4462	360
	2013	7	15	100	90	13	40	96		60	62	122	3656	352
	2014	7	11	134	117	10	82	135		72	80	152	4402	385

NUMBER TESTED IN GRADE8													
2012	60	29	265	233	15	73	188		183	177	360	9,392	
2013	70	26	251	225	23	67	175		185	167	352	8,991	
2014	80	25	271	227	16	107	212		185	200	385	9,464	

PERCENTAGE ADVANCED (Level 3)

Grade	Year	White	African Amer	Hispanic	Econ Disadv	Special Educ	LEP	At Risk	Migrant	Male	Female	All	District	Number Tested (All Students)
8	2012	36.7	6.9	4.2	3.9	0.0	1.4	1.1		10.9	9.6	10.3	7.1	360
	2013	40.0	7.7	9.6	7.6	0.0	3.0	4.0		13.5	18.6	15.9	8.8	352
	2014	40.0	4.0	4.4	6.2	6.3	0.0	0.9		19.5	6.0	12.5	7.3	385

NUMBER TESTED IN GRADE 8													
2012	60	29	265	233	15	73	188		183	177	360	9,392	
2013	70	26	251	225	23	67	175		185	167	352	8,991	
2014	80	25	271	227	16	107	212		185	200	385	9,464	

AVERAGE PERCENTAGE OF ITEMS CORRECT BY REPORTING CATEGORY

Grade	Year	REPORTING CATEGORY			
		1. History	2. Geography and Culture	3. Government and Citizenship	4. Economics, Science, Technology, and Society
8	2012	55.6	58.7	55.9	54.6
	2013	61.7	62.4	53.5	55.9
	2014	58.2	49.2	55.8	60.7

PERCENTAGE SATISFACTORY (Levels 2 or 3)

Grade	Year	White	African Amer	Hispanic	Econ Disadv	Special Educ	LEP	At Risk	Migrant	Male	Female	All	District	Number Tested (All Students)
6	2012			12.5	0.0		12.5	*		*	*	12.5	22.8	8
	2013			*	*		*	*		*	*	*	30.6	5
	2014			*	*		*	*		*	*	*	29.0	4
7	2012			*			*				*	*	16.9	1
	2013			33.3	*		33.3	33.3		*	*	33.3	24.3	6
	2014			30.0	25.0		30.0	30.0		*	50.0	30.0	24.8	10
8	2012			0.0	0.0		0.0	*		*	*	0.0	0.0	8
	2013			*	*		*	*		*	*	*	25.5	2
	2014			0.0	*		0.0	*		*	*	0.0	33.2	6
6-8	2012			5.9	0.0		5.9	11.1		0.0	9.1	5.9	12.7	17
	2013			23.1	20.0		23.1	18.2		*	30.0	23.1	26.8	13
	2014			21.1	17.6		20.0	22.2		0.0	44.4	20.0	29.1	20

NUMBER TESTED IN GRADES 6-8													
2012			17	13		17	9		6	11	17	620	
2013			13	10		13	11		3	10	13	634	
2014			19	17		20	18		11	9	20	722	

NUMBER UNSATISFACTORY (Level 1)

Grade	Year	White	African Amer	Hispanic	Econ Disadv	Special Educ	LEP	At Risk	Migrant	Male	Female	All	District	Number Tested (All Students)
6	2012			7	7		7	*		*	*	7	146	8
	2013			*	*		*	*		*	*	*	150	5
	2014			*	*		*	*		*	*	*	171	4
7	2012			*			*				*	*	177	1
	2013			4	*		4	4		*	*	4	162	6
	2014			7	6		7	7		*	3	7	176	10
8	2012			8	6		8	*		*	*	8	218	8
	2013			*	*		*	*		*	*	*	152	2
	2014			6	*		6	*		*	*	6	165	6
6-8	2012			16	13		16	8		6	10	16	541	17
	2013			10	8		10	9		*	7	10	464	13
	2014			15	14		16	14		11	5	16	512	20

NUMBER TESTED IN GRADES 6-8													
2012			17	13		17	9		6	11	17	620	
2013			13	10		13	11		3	10	13	634	
2014			19	17		20	18		11	9	20	722	

PERCENTAGE ADVANCED (Level 3)

Grade	Year	White	African Amer	Hispanic	Econ Disadv	Special Educ	LEP	At Risk	Migrant	Male	Female	All	District	Number Tested (All Students)
6	2012			0.0	0.0		0.0	*		*	*	0.0	1.1	8
	2013			*	*		*	*		*	*	*	2.3	5
	2014			*	*		*	*		*	*	*	3.3	4
7	2012			*			*				*	*	0.0	1
	2013			0.0	*		0.0	0.0		*	*	0.0	0.9	6
	2014			0.0	0.0		0.0	0.0		*	0.0	0.0	0.0	10
8	2012			0.0	0.0		0.0	*		*	*	0.0	0.0	8
	2013			*	*		*	*		*	*	*	0.0	2
	2014			0.0	*		0.0	*		*	*	0.0	0.4	6
6-8	2012			0.0	0.0		0.0	0.0		0.0	0.0	0.0	0.3	17
	2013			0.0	0.0		0.0	0.0		*	0.0	0.0	1.1	13
	2014			0.0	0.0		0.0	0.0		0.0	0.0	0.0	1.2	20

NUMBER TESTED IN GRADE 6-8													
2012			17	13		17	9		6	11	17	620	
2013			13	10		13	11		3	10	13	634	
2014			19	17		20	18		11	9	20	722	

AVERAGE PERCENTAGE OF ITEMS CORRECT BY REPORTING CATEGORY

Grade	Year	REPORTING CATEGORY				
		1. Numbers, Operations, and Quantitative Reasoning	2. Patterns, Relationships, and Algebraic Reasoning	3. Geometry and Spatial Reasoning	4. Measurement	5. Probability and Statistics
6	2012	29.7	24.0	28.1	28.1	31.3
	2013	*	*	*	*	*
	2014	*	*	*	*	*
7	2012	*	*	*	*	*
	2013	17.9	37.2	41.7	29.2	30.0
	2014	23.8	32.3	41.0	32.5	33.0
8	2012	45.5	45.5	40.6	44.2	48.8
	2013	*	*	*	*	*
	2014	36.4	20.2	31.3	35.9	20.0
6-8	2012	36.7	33.6	32.9	34.0	37.6
	2013	24.5	30.3	35.6	34.7	31.7
	2014	29.1	31.0	36.8	33.3	26.3

PERCENTAGE SATISFACTORY (Levels 2 or 3)

Grade	Year	White	African Amer	Hispanic	Econ Disadv	Special Educ	LEP	At Risk	Migrant	Male	Female	All	District	Number Tested (All Students)
8	2012			0.0	0.0		0.0	*		*	0.0	0.0	14.2	9
	2013			*	*		*	*		*	*	*	13.3	2
	2014			0.0	*		0.0	*		*	*	0.0	17.0	6

NUMBER TESTED IN GRADE 8													
2012			9	6		9	5		3	6	9	226	
2013			2	1		2	2		1	1	2	210	
2014			6	4		6	3		4	2	6	277	

NUMBER UNSATISFACTORY (Level 1)

Grade	Year	White	African Amer	Hispanic	Econ Disadv	Special Educ	LEP	At Risk	Migrant	Male	Female	All	District	Number Tested (All Students)
8	2012			9	6		9	*		*	6	9	194	9
	2013			*	*		*	*		*	*	*	182	2
	2014			6	*		6	*		*	*	6	230	6

NUMBER TESTED IN GRADE 8													
2012			9	6		9	5		3	6	9	226	
2013			2	1		2	2		1	1	2	210	
2014			6	4		6	3		4	2	6	277	

PERCENTAGE ADVANCED (Level 3)

Grade	Year	White	African Amer	Hispanic	Econ Disadv	Special Educ	LEP	At Risk	Migrant	Male	Female	All	District	Number Tested (All Students)
8	2012			0.0	0.0		0.0	*		*	0.0	0.0	0.0	9
	2013			*	*		*	*		*	*	*	0.0	2
	2014			0.0	*		0.0	*		*	*	0.0	0.0	6

NUMBER TESTED IN GRADE 8													
2012			9	6		9	5		3	6	9	226	
2013			2	1		2	2		1	1	2	210	
2014			6	4		6	3		4	2	6	277	

AVERAGE PERCENTAGE OF ITEMS CORRECT BY REPORTING CATEGORY

Grade	Year	REPORTING CATEGORY			
		1. Matter and Energy	2. Force, Motion, and Energy	3. Earth and Space	4. Organisms and Environments
8	2012	31.7	23.1	31.0	30.2
	2013	*	*	*	*
	2014	11.9	29.2	40.5	35.7

PERCENTAGE SATISFACTORY (Levels 2 or 3)

Grade	Year	White	African Amer	Hispanic	Econ Disadv	Special Educ	LEP	At Risk	Migrant	Male	Female	All	District	Number Tested (All Students)
8	2012			0.0	0.0		0.0	*		*	0.0	0.0	11.1	9
	2013			*	*		*	*		*	*	*	18.6	2
	2014			0.0	*		0.0	*		*	*	0.0	11.0	6

NUMBER TESTED IN GRADE 8													
2012			9	6		9	5		3	6	9	226	
2013			2	1		2	2		1	1	2	204	
2014			6	4		6	3		4	2	6	272	

NUMBER UNSATISFACTORY (Level 1)

Grade	Year	White	African Amer	Hispanic	Econ Disadv	Special Educ	LEP	At Risk	Migrant	Male	Female	All	District	Number Tested (All Students)
8	2012			9	6		9	*		*	6	9	201	9
	2013			*	*		*	*		*	*	*	166	2
	2014			6	*		6	*		*	*	6	242	6

NUMBER TESTED IN GRADE8													
2012			9	6		9	5		3	6	9	226	
2013			2	1		2	2		1	1	2	204	
2014			6	4		6	3		4	2	6	272	

PERCENTAGE ADVANCED (Level 3)

Grade	Year	White	African Amer	Hispanic	Econ Disadv	Special Educ	LEP	At Risk	Migrant	Male	Female	All	District	Number Tested (All Students)
8	2012			0.0	0.0		0.0	*		*	0.0	0.0	0.0	9
	2013			*	*		*	*		*	*	*	1.0	2
	2014			0.0	*		0.0	*		*	*	0.0	0.4	6

NUMBER TESTED IN GRADE 8													
2012			9	6		9	5		3	6	9	226	
2013			2	1		2	2		1	1	2	204	
2014			6	4		6	3		4	2	6	272	

AVERAGE PERCENTAGE OF ITEMS CORRECT BY REPORTING CATEGORY

Grade	Year	REPORTING CATEGORY			
		1. History	2. Geography and Culture	3. Government and Citizenship	4. Economics, Science, Technology, and Society
8	2012	31.7	34.3	30.6	23.6
	2013	*	*	*	*
	2014	31.7	29.2	26.4	31.3

PERCENTAGE SATISFACTORY (Levels 2 or 3)

Grade	Year	White	African Amer	Hispanic	Econ Disadv	Special Educ	LEP	At Risk	Migrant	Male	Female	All	District	Number Tested (All Students)
6	2012	*	*	55.6	57.9	59.1	66.7	58.8		71.4	37.5	59.1	65.5	22
	2013	*	*	42.9	38.7	36.4	23.1	30.8		50.0	15.4	36.4	55.9	33
	2014	*	*	66.7	60.0	61.5	63.6	59.1		66.7	54.5	61.5	51.6	26
7	2012	*	25.0	50.0	35.0	38.1	*	40.0		27.3	50.0	38.1	57.3	21
	2013	*	*	60.0	65.0	60.9	83.3	52.6		57.1	66.7	60.9	61.0	23
	2014	*	*	52.2	54.2	48.1	54.5	48.1		56.3	36.4	48.1	55.4	27
8	2012	*	*	31.3	23.5	31.6	*	31.6		30.8	33.3	31.6	58.0	19
	2013	*	66.7	60.0	60.0	61.1	*	62.5		54.5	71.4	61.1	74.5	18
	2014	*	*	87.0	81.0	84.6	100.0	88.0		85.7	83.3	84.6	75.0	26
6-8	2012	*	38.5	45.7	39.3	43.5	60.0	42.9		44.7	41.7	43.5	60.3	62
	2013	*	54.5	51.7	51.5	50.0	45.5	45.9		53.3	44.8	50.0	63.6	74
	2014	*	33.3	68.7	64.6	64.6	69.0	64.9		68.9	58.8	64.6	60.0	79

NUMBER TESTED IN GRADES 6-8													
2012	3	13	46	56	62	15	56			38	24	62	1,571
2013	3	11	58	66	74	22	61			45	29	74	1,687
2014	3	9	67	65	79	29	74			45	34	79	1,689

NUMBER UNSATISFACTORY (Level 1)

Grade	Year	White	African Amer	Hispanic	Econ Disadv	Special Educ	LEP	At Risk	Migrant	Male	Female	All	District	Number Tested (All Students)
6	2012	*	*	8	8	9	2	7		4	5	9	181	22
	2013	*	*	16	19	21	10	18		10	11	21	270	33
	2014	*	*	7	8	10	4	9		5	5	10	281	26
7	2012	*	6	6	13	13	*	12		8	5	13	244	21
	2013	*	*	8	7	9	1	9		6	3	9	202	23
	2014	*	*	11	11	14	5	14		7	7	14	266	27
8	2012	*	*	11	13	13	*	13		9	4	13	199	19
	2013	*	2	4	6	7	*	6		5	2	7	142	18
	2014	*	*	3	4	4	0	3		2	2	4	128	26
6-8	2012	*	8	25	34	35	6	32		21	14	35	624	62
	2013	*	5	28	32	37	12	33		21	16	37	614	74
	2014	*	6	21	23	28	9	26		14	14	28	675	79

NUMBER TESTED IN GRADES 6-8													
2012	3	13	46	56	62	15	56			38	24	62	1,571
2013	3	11	58	66	74	22	61			45	29	74	1,687
2014	3	9	67	65	79	29	74			45	34	79	1,689

PERCENTAGE ADVANCED (Level 3)

Grade	Year	White	African Amer	Hispanic	Econ Disadv	Special Educ	LEP	At Risk	Migrant	Male	Female	All	District	Number Tested (All Students)
6	2012	*	*	0.0	0.0	0.0	0.0	0.0		0.0	0.0	0.0	3.6	22
	2013	*	*	3.6	3.2	3.0	7.7	3.8		5.0	0.0	3.0	3.1	33
	2014	*	*	0.0	0.0	0.0	0.0	0.0		0.0	0.0	0.0	2.9	26
7	2012	*	0.0	0.0	0.0	0.0	*	0.0		0.0	0.0	0.0	1.0	21
	2013	*	*	0.0	0.0	0.0	0.0	0.0		0.0	0.0	0.0	3.5	23
	2014	*	*	0.0	0.0	0.0	0.0	0.0		0.0	0.0	0.0	3.9	27
8	2012	*	*	0.0	0.0	0.0	*	0.0		0.0	0.0	0.0	1.1	19
	2013	*	0.0	0.0	0.0	0.0	*	0.0		0.0	0.0	0.0	2.5	18
	2014	*	*	4.3	4.8	3.8	0.0	4.0		0.0	8.3	3.8	2.9	26
6-8	2012	*	0.0	0.0	0.0	0.0	0.0	0.0		0.0	0.0	0.0	1.9	62
	2013	*	0.0	1.7	1.5	1.4	4.5	1.6		2.2	0.0	1.4	3.0	74
	2014	*	0.0	1.5	1.5	1.3	0.0	1.4		0.0	2.9	1.3	3.3	79

NUMBER TESTED IN GRADE 6-8													
2012	3	13	46	56	62	15	56		38	24	62	1,571	
2013	3	11	58	66	74	22	61		45	29	74	1,687	
2014	3	9	67	65	79	29	74		45	34	79	1,689	

AVERAGE PERCENTAGE OF ITEMS CORRECT BY REPORTING CATEGORY

Grade	Year	REPORTING CATEGORY		
		1. Understanding Across Genres (GR 3-5) 1. Understanding/Analysis Across Genres (GR 6-8)	2. Understanding/Analysis of Literary Texts	3. Understanding/Analysis of Informational Texts
6	2012	46.6	60.8	41.6
	2013	47.7	49.8	50.2
	2014	51.4	53.8	54.9
7	2012	42.9	41.7	36.8
	2013	62.5	48.8	41.4
	2014	53.2	50.5	41.2
8	2012	50.0	46.2	38.5
	2013	66.7	51.5	47.9
	2014	67.3	60.3	55.5
6-8	2012	46.4	49.9	39.0
	2013	56.9	49.9	46.9
	2014	57.3	54.8	50.5

PERCENTAGE SATISFACTORY (Levels 2 or 3)

Grade	Year	White	African Amer	Hispanic	Econ Disadv	Special Educ	LEP	At Risk	Migrant	Male	Female	All	District	Number Tested (All Students)
7	2012	*	25.0	46.7	34.8	40.0	50.0	41.7		40.0	40.0	40.0	56.7	25
	2013	*	*	73.7	68.4	68.2	*	61.1		69.2	66.7	68.2	63.7	22
	2014	*	*	47.6	50.0	48.0	70.0	48.0		57.1	36.4	48.0	62.9	25

NUMBER TESTED IN GRADE 7													
2012	2	8	15	23	25	6	24		15	10	25	586	
2013	1	2	19	19	22	5	18		13	9	22	509	
2014	1	3	21	22	25	10	25		14	11	25	599	

NUMBER UNSATISFACTORY (Level 1)

Grade	Year	White	African Amer	Hispanic	Econ Disadv	Special Educ	LEP	At Risk	Migrant	Male	Female	All	District	Number Tested (All Students)
7	2012	*	6	8	15	15	3	14		9	6	15	254	25
	2013	*	*	5	6	7	*	7		4	3	7	185	22
	2014	*	*	11	11	13	3	13		6	7	13	222	25

NUMBER TESTED IN GRADE 7													
2012	2	8	15	23	25	6	24		15	10	25	586	
2013	1	2	19	19	22	5	18		13	9	22	509	
2014	1	3	21	22	25	10	25		14	11	25	599	

PERCENTAGE ADVANCED (Level 3)

Grade	Year	White	African Amer	Hispanic	Econ Disadv	Special Educ	LEP	At Risk	Migrant	Male	Female	All	District	Number Tested (All Students)
7	2012	*	0.0	0.0	0.0	0.0	0.0	0.0		0.0	0.0	0.0	2.7	25
	2013	*	*	0.0	0.0	0.0	*	0.0		0.0	0.0	0.0	6.3	22
	2014	*	*	0.0	0.0	0.0	0.0	0.0		0.0	0.0	0.0	6.3	25

NUMBER TESTED IN GRADE 7													
2012	2	8	15	23	25	6	24		15	10	25	586	
2013	1	2	19	19	22	5	18		13	9	22	509	
2014	1	3	21	22	25	10	25		14	11	25	599	

AVERAGE PERCENTAGE OF ITEMS CORRECT BY REPORTING CATEGORY

Grade	Year	REPORTING CATEGORY		
		1. Composition ¹ GR 4: Personal Narrative GR 7: Expository	2. Revision	3. Editing
7	2012	1.0	40.6	49.5
	2013	2.1	53.1	54.3
	2014	1.8	51.7	48.6

¹Average score points (range 0-6). A STAAR M composition is rated twice on a scale of 0 to 3, and the ratings are summed to determine score points for the composition. Score point scale: 0=Non-scorable; 2=Very Limited; 3=between Very Limited and Basic; 4=Basic; 5=between Basic and Satisfactory; 6=Satisfactory

PERCENTAGE SATISFACTORY (Levels 2 or 3)

Grade	Year	White	African Amer	Hispanic	Econ Disadv	Special Educ	LEP	At Risk	Migrant	Male	Female	All	District	Number Tested (All Students)
6	2012	*	*	69.2	64.3	64.7	*	64.3		64.3	*	64.7	46.2	17
	2013	*	*	60.0	64.3	63.3	61.5	64.0		64.7	61.5	63.3	54.3	30
	2014	*	*	65.2	77.3	67.9	75.0	70.8		66.7	69.2	67.9	52.0	28
7	2012	*	*	57.1	71.4	71.4	*	75.0		62.5	83.3	71.4	50.5	14
	2013	*	*	63.2	60.0	60.9	100.0	68.4		50.0	85.7	60.9	49.4	23
	2014	*	*	61.1	63.2	59.1	66.7	59.1		58.3	60.0	59.1	48.8	22
8	2012	*	*	62.5	52.9	57.9	*	57.9		57.1	*	57.9	46.2	19
	2013	*	83.3	50.0	61.5	64.3	*	69.2		75.0	*	64.3	71.4	14
	2014	*	*	95.0	100.0	95.8	100.0	95.7		92.9	100.0	95.8	71.0	24
6-8	2012	*	80.0	63.9	62.2	64.0	61.5	64.4		61.1	71.4	64.0	47.7	50
	2013	*	83.3	60.0	62.3	62.7	71.4	66.7		61.0	68.0	62.7	58.5	67
	2014	*	70.0	73.8	80.0	74.3	78.6	75.4		73.2	75.8	74.3	56.7	74

NUMBER TESTED IN GRADES 6-8													
2012	4	10	36	45	50	13	45			36	14	50	1,554
2013	3	12	50	61	67	21	57			41	25	67	1,659
2014	3	10	61	60	74	28	69			41	33	74	1,684

NUMBER UNSATISFACTORY (Level 1)

Grade	Year	White	African Amer	Hispanic	Econ Disadv	Special Educ	LEP	At Risk	Migrant	Male	Female	All	District	Number Tested (All Students)
6	2012	*	*	4	5	6	*	5		5	*	6	276	17
	2013	*	*	10	10	11	5	9		6	5	11	272	30
	2014	*	*	8	5	9	3	7		5	4	9	271	28
7	2012	*	*	3	4	4	*	3		3	1	4	276	14
	2013	*	*	7	8	9	0	6		8	1	9	257	23
	2014	*	*	7	7	9	3	9		5	4	9	310	22
8	2012	*	*	6	8	8	*	8		6	*	8	260	19
	2013	*	1	3	5	5	*	4		2	*	5	159	14
	2014	*	*	1	0	1	0	1		1	0	1	149	24
6-8	2012	*	2	13	17	18	5	16		14	4	18	812	50
	2013	*	2	20	23	25	6	19		16	8	25	688	67
	2014	*	3	16	12	19	6	17		11	8	19	730	74

NUMBER TESTED IN GRADES 6-8													
2012	4	10	36	45	50	13	45		36	14	50	1,554	
2013	3	12	50	61	67	21	57		41	25	67	1,659	
2014	3	10	61	60	74	28	69		41	33	74	1,684	

PERCENTAGE ADVANCED (Level 3)

Grade	Year	White	African Amer	Hispanic	Econ Disadv	Special Educ	LEP	At Risk	Migrant	Male	Female	All	District	Number Tested (All Students)
6	2012	*	*	0.0	0.0	0.0	*	0.0		0.0	*	0.0	5.5	17
	2013	*	*	0.0	3.6	3.3	0.0	0.0		0.0	7.7	3.3	4.9	30
	2014	*	*	8.7	13.6	10.7	8.3	8.3		13.3	7.7	10.7	3.4	28
7	2012	*	*	0.0	7.1	7.1	*	0.0		0.0	16.7	7.1	1.1	14
	2013	*	*	0.0	0.0	0.0	0.0	0.0		0.0	0.0	0.0	3.0	23
	2014	*	*	5.6	5.3	4.5	11.1	4.5		8.3	0.0	4.5	2.3	22
8	2012	*	*	0.0	0.0	0.0	*	0.0		0.0	*	0.0	1.2	19
	2013	*	0.0	0.0	0.0	0.0	*	0.0		0.0	*	0.0	2.2	14
	2014	*	*	5.0	5.3	4.2	14.3	4.3		7.1	0.0	4.2	1.9	24
6-8	2012	*	0.0	0.0	2.2	2.0	0.0	0.0		0.0	7.1	2.0	2.6	50
	2013	*	8.3	0.0	1.6	1.5	0.0	0.0		0.0	4.0	1.5	3.4	67
	2014	*	0.0	6.6	8.3	6.8	10.7	5.8		9.8	3.0	6.8	2.6	74

NUMBER TESTED IN GRADE 6-8													
2012	4	10	36	45	50	13	45		36	14	50	1,554	
2013	3	12	50	61	67	21	57		41	25	67	1,659	
2014	3	10	61	60	74	28	69		41	33	74	1,684	

AVERAGE PERCENTAGE OF ITEMS CORRECT BY REPORTING CATEGORY

Grade	Year	REPORTING CATEGORY				
		1. Numbers, Operations, and Quantitative Reasoning	2. Patterns, Relationships, and Algebraic Reasoning	3. Geometry and Spatial Reasoning	4. Measurement	5. Probability and Statistics
6	2012	42.4	33.5	45.1	41.2	50.0
	2013	50.5	49.7	57.8	32.2	49.4
	2014	50.0	47.5	59.5	41.1	56.5
7	2012	40.9	46.4	47.3	36.9	51.8
	2013	52.6	47.0	54.9	52.2	40.8
	2014	52.5	46.8	52.8	46.2	43.2
8	2012	35.8	45.9	45.6	48.9	42.8
	2013	45.7	46.8	46.4	53.6	49.1
	2014	52.9	64.8	56.3	65.0	53.6
6-8	2012	39.5	41.9	45.9	42.9	47.7
	2013	50.2	48.1	54.4	43.5	46.4
	2014	51.7	52.9	56.5	50.4	51.6

PERCENTAGE SATISFACTORY (Levels 2 or 3)

Grade	Year	White	African Amer	Hispanic	Econ Disadv	Special Educ	LEP	At Risk	Migrant	Male	Female	All	District	Number Tested (All Students)
8	2012	*	*	62.5	62.5	66.7	*	66.7		75.0	50.0	66.7	58.2	18
	2013	*	66.7	57.1	61.5	60.0	*	61.5		62.5	57.1	60.0	59.3	15
	2014	*	*	78.9	81.3	72.7	100.0	80.0		75.0	70.0	72.7	63.5	22

NUMBER TESTED IN GRADE 8													
2012	1	1	16	16	18	4	18		12	6	18	457	
2013	1	6	7	13	15	3	13		8	7	15	526	
2014	1	2	19	16	22	6	20		12	10	22	474	

NUMBER UNSATISFACTORY (Level 1)

Grade	Year	White	African Amer	Hispanic	Econ Disadv	Special Educ	LEP	At Risk	Migrant	Male	Female	All	District	Number Tested (All Students)
8	2012	*	*	6	6	6	*	6		3	3	6	191	18
	2013	*	2	3	5	6	*	5		3	3	6	214	15
	2014	*	*	4	3	6	0	4		3	3	6	173	22

NUMBER TESTED IN GRADE 8													
2012	1	1	16	16	18	4	18		12	6	18	457	
2013	1	6	7	13	15	3	13		8	7	15	526	
2014	1	2	19	16	22	6	20		12	10	22	474	

PERCENTAGE ADVANCED (Level 3)

Grade	Year	White	African Amer	Hispanic	Econ Disadv	Special Educ	LEP	At Risk	Migrant	Male	Female	All	District	Number Tested (All Students)
8	2012	*	*	0.0	0.0	0.0	*	0.0		0.0	0.0	0.0	0.4	18
	2013	*	0.0	14.3	7.7	6.7	*	7.7		12.5	0.0	6.7	2.5	15
	2014	*	*	0.0	0.0	0.0	0.0	0.0		0.0	0.0	0.0	3.8	22

NUMBER TESTED IN GRADE 8													
2012	1	1	16	16	18	4	18		12	6	18	457	
2013	1	6	7	13	15	3	13		8	7	15	526	
2014	1	2	19	16	22	6	20		12	10	22	474	

AVERAGE PERCENTAGE OF ITEMS CORRECT BY REPORTING CATEGORY

Grade	Year	REPORTING CATEGORY			
		1. Matter and Energy	2. Force, Motion, and Energy	3. Earth and Space	4. Organisms and Environments
8	2012	59.1	61.7	51.5	50.0
	2013	60.6	62.7	49.7	49.7
	2014	64.9	76.8	62.4	55.8

PERCENTAGE SATISFACTORY (Levels 2 or 3)

Grade	Year	White	African Amer	Hispanic	Econ Disadv	Special Educ	LEP	At Risk	Migrant	Male	Female	All	District	Number Tested (All Students)
8	2012	*	*	46.7	46.7	52.9	*	52.9		58.3	*	52.9	52.3	17
	2013	*	33.3	42.9	30.8	40.0	*	46.2		50.0	28.6	40.0	59.5	15
	2014	*	*	72.7	72.2	68.0	85.7	73.9		78.6	54.5	68.0	59.3	25

NUMBER TESTED IN GRADE 8													
2012	1	1	15	15	17	4	17		12	5	17	451	
2013	1	6	7	13	15	3	13		8	7	15	516	
2014	1	2	22	18	25	7	23		14	11	25	479	

NUMBER UNSATISFACTORY (Level 1)

Grade	Year	White	African Amer	Hispanic	Econ Disadv	Special Educ	LEP	At Risk	Migrant	Male	Female	All	District	Number Tested (All Students)
8	2012	*	*	8	8	8	*	8		5	*	8	215	17
	2013	*	4	4	9	9	*	7		4	5	9	209	15
	2014	*	*	6	5	8	1	6		3	5	8	195	25

NUMBER TESTED IN GRADE8													
2012	1	1	15	15	17	4	17		12	5	17	451	
2013	1	6	7	13	15	3	13		8	7	15	516	
2014	1	2	22	18	25	7	23		14	11	25	479	

PERCENTAGE ADVANCED (Level 3)

Grade	Year	White	African Amer	Hispanic	Econ Disadv	Special Educ	LEP	At Risk	Migrant	Male	Female	All	District	Number Tested (All Students)
8	2012	*	*	6.7	6.7	5.9	*	5.9		8.3	*	5.9	2.9	17
	2013	*	0.0	0.0	0.0	0.0	*	0.0		0.0	0.0	0.0	1.9	15
	2014	*	*	0.0	0.0	0.0	0.0	0.0		0.0	0.0	0.0	3.5	25

NUMBER TESTED IN GRADE 8													
2012	1	1	15	15	17	4	17		12	5	17	451	
2013	1	6	7	13	15	3	13		8	7	15	516	
2014	1	2	22	18	25	7	23		14	11	25	479	

AVERAGE PERCENTAGE OF ITEMS CORRECT BY REPORTING CATEGORY

Grade	Year	REPORTING CATEGORY			
		1. History	2. Geography and Culture	3. Government and Citizenship	4. Economics, Science, Technology, and Society
8	2012	54.4	50.6	49.4	49.0
	2013	48.3	51.3	47.3	45.6
	2014	47.8	64.0	50.0	58.0

PERCENTAGE DEMONSTRATING IMPROVEMENT


Grade	Level 1 in 2013		Level 2 in 2013		Level 3 in 2013		Levels 1-3 in 2013	
	Number Tested Both Years	Percentage Improved in 2014	Number Tested Both Years	Percentage Improved in 2014	Number Tested Both Years	Percentage Improved in 2014	Number Tested Both Years	Percentage Improved in 2014
6	5	*	6	66.7	0		11	45.5
7	7	28.6	6	66.7	0		13	46.2
8	5	*	6	33.3	0		11	36.4
ALL	17	29.4	18	55.6	0		35	42.9

PERFORMANCE IN 2014

Grade 2013-14 (N Rated)	Domain:	Listening		Speaking		Writing		Reading		Composite	
	2014 Level	N	%	N	%	N	%	N	%	N	%
6 (145)	Beginning	10	6.9	13	9.0	19	13.2	12	8.3	8	5.6
	Intermediate	50	34.7	53	36.8	54	37.5	40	27.6	41	28.5
	Advanced	51	35.4	46	31.9	42	29.2	65	44.8	69	47.9
	Advanced High	33	22.9	32	22.2	29	20.1	28	19.3	26	18.1
7 (134)	Beginning	15	11.2	14	10.4	17	12.7	12	9.0	9	6.7
	Intermediate	34	25.4	39	29.1	62	46.3	38	28.4	41	30.6
	Advanced	46	34.3	53	39.6	38	28.4	54	40.3	59	44.0
	Advanced High	39	29.1	28	20.9	17	12.7	30	22.4	25	18.7
8 (115)	Beginning	5	4.4	5	4.4	9	7.9	4	3.5	3	2.6
	Intermediate	41	36.0	46	40.4	48	42.1	33	28.7	26	22.8
	Advanced	41	36.0	40	35.1	35	30.7	64	55.7	67	58.8
	Advanced High	27	23.7	23	20.2	22	19.3	14	12.2	18	15.8
ALL (394)	Beginning	30	7.7	32	8.2	45	11.5	28	7.1	20	5.1
	Intermediate	125	31.9	138	35.2	164	41.8	111	28.2	108	27.6
	Advanced	138	35.2	139	35.5	115	29.3	183	46.4	195	49.7
	Advanced High	99	25.3	83	21.2	68	17.3	72	18.3	69	17.6

**PROGRESSION FROM
2013 TO 2014**

Number Rated Both Years N (%) Progressed	2014 Level	2013 Level			
		Beg	Int	Adv	Adv High
135 32 (23.7%)	Beginning	7			
	Intermediate	2	36		
	Advanced	0	6	60	
	Advanced High	0	0	24	
117 28 (23.9%)	Beginning	4			
	Intermediate	1	33		
	Advanced	0	3	52	
	Advanced High	0	0	24	
101 24 (23.8%)	Beginning	1			
	Intermediate	1	21		
	Advanced	0	6	55	
	Advanced High	0	0	17	
353 84 (23.8%)	Beginning	12			
	Intermediate	4	90		
	Advanced	0	15	167	
	Advanced High	0	0	65	

 Indicates students who progressed at least one level from 2013 to 2014.

SEMESTER 1 TESTS

Number Tested	Averages				% Passing		District % Passing	
	% Items Correct	Scale Score	Course Mark	Course Mark (no ACP)	ACP	Course	ACP	Course

FRENCH II

3	*	*	*	*	*	*	61.5	*
---	---	---	---	---	---	---	------	---

SPANISH FOR NATIVE SPEAKERS I

92	51.3	67.5	78.4	79.6	43.5	79.8	64.4	89.8
----	------	------	------	------	------	------	------	------

SPANISH FOR NATIVE SPEAKERS II

50	48.2	65.4	74.5	75.5	30.0	73.5	62.7	94.3
----	------	------	------	------	------	------	------	------

SPANISH II

65	43.2	62.1	84.5	87.0	23.1	93.8	72.2	93.0
----	------	------	------	------	------	------	------	------

ALGEBRA I PRE-AP

94	71.7	81.1	87.2	87.9	88.3	100.0	65.2	96.3
----	------	------	------	------	------	-------	------	------

BEGINNING LANGUAGE ARTS 6 FOR ESL

--	--	--	--	--	--	--	--	--

BEGINNING LANGUAGE ARTS 7 FOR ESL

--	--	--	--	--	--	--	--	--

BEGINNING LANGUAGE ARTS 8 FOR ESL

--	--	--	--	--	--	--	--	--

INTERMEDIATE LANGUAGE ARTS 7 FOR ESL

--	--	--	--	--	--	--	--	--

INTERMEDIATE LANGUAGE ARTS 8 FOR ESL

--	--	--	--	--	--	--	--	--

INTERMEDIATE READING 6 FOR ESL

--	--	--	--	--	--	--	--	--

SEMESTER 2 TESTS

Number Tested	Averages				% Passing		District % Passing	
	% Items Correct	Scale Score	Course Mark	Course Mark (no ACP)	ACP	Course	ACP	Course

FRENCH II

2	*	*	*	*	*	*	58.4	*
---	---	---	---	---	---	---	------	---

SPANISH FOR NATIVE SPEAKERS I

90	54.0	69.3	77.5	78.4	56.7	74.4	68.1	84.6
----	------	------	------	------	------	------	------	------

SPANISH FOR NATIVE SPEAKERS II

47	51.5	67.7	80.6	82.0	46.8	87.2	69.8	88.6
----	------	------	------	------	------	------	------	------

SPANISH II

62	52.9	68.6	83.7	85.4	46.8	93.5	76.5	89.2
----	------	------	------	------	------	------	------	------

ALGEBRA I PRE-AP

--	--	--	--	--	--	--	--	--

BEGINNING LANGUAGE ARTS 6 FOR ESL

4	*	*	*	*	*	*	34.2	*
---	---	---	---	---	---	---	------	---

BEGINNING LANGUAGE ARTS 7 FOR ESL

2	*	*	*	*	*	*	45.1	*
---	---	---	---	---	---	---	------	---

BEGINNING LANGUAGE ARTS 8 FOR ESL

2	*	*	*	*	*	*	49.6	*
---	---	---	---	---	---	---	------	---

INTERMEDIATE LANGUAGE ARTS 7 FOR ESL

6	46.1	65.6	80.0	81.6	33.3	83.3	62.9	94.2
---	------	------	------	------	------	------	------	------

INTERMEDIATE LANGUAGE ARTS 8 FOR ESL

4	*	*	*	*	*	*	61.5	*
---	---	---	---	---	---	---	------	---

INTERMEDIATE READING 6 FOR ESL

4	*	*	*	*	*	*	56.2	*
---	---	---	---	---	---	---	------	---

SEMESTER 1 TESTS

Number Tested	Averages				% Passing		District % Passing	
	% Items Correct	Scale Score	Course Mark	Course Mark (no ACP)	ACP	Course	ACP	Course

LANGUAGE ARTS 6

220	50.5	70.3	77.2	77.9	52.3	81.7	51.1	88.5
-----	------	------	------	------	------	------	------	------

LANGUAGE ARTS 6 PRE-AP

144	69.3	76.9	86.7	87.7	86.8	97.2	79.1	98.0
-----	------	------	------	------	------	------	------	------

LANGUAGE ARTS 7

198	43.5	69.7	78.6	79.6	54.5	90.8	52.3	86.0
-----	------	------	------	------	------	------	------	------

LANGUAGE ARTS 7 PRE-AP

202	62.6	75.1	87.2	88.5	75.2	100.0	72.1	96.8
-----	------	------	------	------	------	-------	------	------

LANGUAGE ARTS 8

233	54.2	70.1	78.3	79.2	55.4	86.0	56.7	87.7
-----	------	------	------	------	------	------	------	------

LANGUAGE ARTS 8 PRE-AP

155	68.8	77.2	88.9	90.2	81.3	100.0	76.4	97.3
-----	------	------	------	------	------	-------	------	------

MATHEMATICS 6

238	36.3	70.6	77.8	78.6	47.5	89.8	45.6	86.2
-----	------	------	------	------	------	------	------	------

MATHEMATICS 6 PRE-AP

129	57.1	76.2	85.5	86.6	76.0	97.7	65.8	97.0
-----	------	------	------	------	------	------	------	------

MATHEMATICS 7

226	39.9	70.9	80.7	81.8	59.3	95.9	49.3	84.8
-----	------	------	------	------	------	------	------	------

MATHEMATICS 7 PRE-AP

187	67.2	73.4	86.9	88.4	65.2	98.4	64.9	96.0
-----	------	------	------	------	------	------	------	------

MATHEMATICS 8

303	56.9	72.5	77.9	78.5	65.7	81.2	51.9	84.5
-----	------	------	------	------	------	------	------	------

SEMESTER 2 TESTS

Number Tested	Averages				% Passing		District % Passing	
	% Items Correct	Scale Score	Course Mark	Course Mark (no ACP)	ACP	Course	ACP	Course

LANGUAGE ARTS 6

210	52.6	71.0	77.7	78.5	59.0	81.4	56.8	85.3
-----	------	------	------	------	------	------	------	------

LANGUAGE ARTS 6 PRE-AP

147	58.2	73.3	86.5	87.9	74.8	95.2	64.3	96.1
-----	------	------	------	------	------	------	------	------

LANGUAGE ARTS 7

190	55.1	69.4	76.1	76.8	53.7	78.9	59.3	82.9
-----	------	------	------	------	------	------	------	------

LANGUAGE ARTS 7 PRE-AP

199	68.0	74.8	87.4	88.8	76.4	99.5	79.1	96.0
-----	------	------	------	------	------	------	------	------

LANGUAGE ARTS 8

222	58.4	71.0	73.6	73.9	64.0	69.8	72.6	85.9
-----	------	------	------	------	------	------	------	------

LANGUAGE ARTS 8 PRE-AP

153	63.1	75.4	86.7	87.9	77.8	95.4	75.8	96.8
-----	------	------	------	------	------	------	------	------

MATHEMATICS 6

232	40.1	69.5	75.3	75.9	46.6	78.0	42.2	81.1
-----	------	------	------	------	------	------	------	------

MATHEMATICS 6 PRE-AP

129	68.0	78.2	85.5	86.3	81.4	93.8	72.1	95.6
-----	------	------	------	------	------	------	------	------

MATHEMATICS 7

217	46.3	70.1	76.7	77.4	52.1	87.0	50.1	79.6
-----	------	------	------	------	------	------	------	------

MATHEMATICS 7 PRE-AP

181	64.1	73.8	85.2	86.4	60.2	96.7	70.9	96.1
-----	------	------	------	------	------	------	------	------

MATHEMATICS 8

290	51.8	71.1	77.5	78.2	62.1	81.0	51.9	85.4
-----	------	------	------	------	------	------	------	------

SEMESTER 1 TESTS

Number Tested	Averages				% Passing		District % Passing	
	% Items Correct	Scale Score	Course Mark	Course Mark (no ACP)	ACP	Course	ACP	Course

MS BAND: LISTENING AND MUSIC ELEMENTS

54	80.3	86.7	87.4	81.5	96.3	63.8	98.2
----	------	------	------	------	------	------	------

MS HEALTH EDUCATION

--	--	--	--	--	--	--	--

PHYSICAL EDUCATION 6

188	85.5	99.5	101.1	94.7	100.0	74.0	99.1
-----	------	------	-------	------	-------	------	------

PHYSICAL EDUCATION 7 & 8

268	87.7	99.6	100.9	97.0	100.0	83.6	98.3
-----	------	------	-------	------	-------	------	------

READING 6

360	65.4	75.3	80.5	81.1	73.6	86.8	56.3	90.6
-----	------	------	------	------	------	------	------	------

READING MASTERY 7

119	47.9	68.7	79.1	80.2	47.9	88.0	50.3	84.6
-----	------	------	------	------	------	------	------	------

READING MASTERY 8

92	51.4	68.3	76.0	76.9	53.3	87.8	63.1	85.0
----	------	------	------	------	------	------	------	------

SCIENCE 6

367	69.8	81.9	85.3	85.7	88.3	95.9	59.9	91.6
-----	------	------	------	------	------	------	------	------

SCIENCE 7

249	54.4	72.1	76.1	76.5	61.8	76.4	51.0	85.7
-----	------	------	------	------	------	------	------	------

SCIENCE 7 PRE-AP

161	70.7	79.1	90.0	91.2	90.1	98.8	75.2	97.8
-----	------	------	------	------	------	------	------	------

SCIENCE 8 & SCIENCE 8 PRE-AP

397	59.7	73.1	79.3	80.0	65.0	84.4	64.6	90.4
-----	------	------	------	------	------	------	------	------

SEMESTER 2 TESTS

Number Tested	Averages				% Passing		District % Passing	
	% Items Correct	Scale Score	Course Mark	Course Mark (no ACP)	ACP	Course	ACP	Course

MS BAND: LISTENING AND MUSIC ELEMENTS

--	--	--	--	--	--	--	--

MS HEALTH EDUCATION

63	61.7	76.5	80.8	81.2	69.8	88.5	73.6	89.8
----	------	------	------	------	------	------	------	------

PHYSICAL EDUCATION 6

202		85.8	99.8	101.4	98.0	100.0	82.8	99.0
-----	--	------	------	-------	------	-------	------	------

PHYSICAL EDUCATION 7 & 8

239		88.9	99.7	100.9	98.3	100.0	88.6	97.2
-----	--	------	------	-------	------	-------	------	------

READING 6

358	56.3	73.3	79.4	80.0	64.8	82.4	55.7	86.3
-----	------	------	------	------	------	------	------	------

READING MASTERY 7

111	48.3	68.4	76.9	77.8	44.1	81.1	59.4	81.4
-----	------	------	------	------	------	------	------	------

READING MASTERY 8

86	56.9	71.3	76.0	76.5	54.7	82.6	71.7	85.4
----	------	------	------	------	------	------	------	------

SCIENCE 6

363	79.3	86.8	86.1	86.0	93.7	95.3	57.7	87.5
-----	------	------	------	------	------	------	------	------

SCIENCE 7

239	69.1	81.1	80.3	80.2	87.4	89.5	71.7	85.1
-----	------	------	------	------	------	------	------	------

SCIENCE 7 PRE-AP

156	80.2	84.8	91.0	91.7	95.5	100.0	81.2	96.9
-----	------	------	------	------	------	-------	------	------

SCIENCE 8 & SCIENCE 8 PRE-AP

381	61.0	72.8	80.6	81.5	65.1	87.4	64.5	88.8
-----	------	------	------	------	------	------	------	------

SEMESTER 1 TESTS

Number Tested	Averages				% Passing		District % Passing	
	% Items Correct	Scale Score	Course Mark	Course Mark (no ACP)	ACP	Course	ACP	Course

SOCIAL STUDIES 6

368	54.2	71.4	80.6	81.6	52.2	82.8	42.8	90.4
-----	------	------	------	------	------	------	------	------

TECHNOLOGY APPLICATIONS

168	62.8	77.7	84.5	85.3	76.8	97.0	60.4	93.7
-----	------	------	------	------	------	------	------	------

TEXAS STUDIES 7

217	48.2	71.2	76.0	76.5	47.5	87.9	49.3	87.3
-----	------	------	------	------	------	------	------	------

TEXAS STUDIES 7 PRE-AP

192	70.0	77.5	85.4	86.3	74.0	99.0	68.1	97.3
-----	------	------	------	------	------	------	------	------

U.S. STUDIES 8

218	43.8	67.6	76.4	77.4	39.9	79.8	50.5	85.9
-----	------	------	------	------	------	------	------	------

U.S. STUDIES 8 PRE-AP

181	67.6	75.7	87.8	89.1	76.2	98.9	70.3	97.8
-----	------	------	------	------	------	------	------	------

SEMESTER 2 TESTS

Number Tested	Averages				% Passing		District % Passing	
	% Items Correct	Scale Score	Course Mark	Course Mark (no ACP)	ACP	Course	ACP	Course

SOCIAL STUDIES 6

356	61.2	74.1	81.7	82.6	64.3	87.1	56.1	86.5
-----	------	------	------	------	------	------	------	------

TECHNOLOGY APPLICATIONS

170	68.6	80.8	83.2	83.5	81.2	94.1	65.5	89.7
-----	------	------	------	------	------	------	------	------

TEXAS STUDIES 7

212	50.0	73.2	80.3	81.1	62.7	95.3	59.9	84.9
-----	------	------	------	------	------	------	------	------

TEXAS STUDIES 7 PRE-AP

184	71.4	80.0	88.8	89.8	85.9	100.0	79.0	95.9
-----	------	------	------	------	------	-------	------	------

U.S. STUDIES 8

197	47.7	65.1	73.9	74.9	34.0	71.9	54.3	84.4
-----	------	------	------	------	------	------	------	------

U.S. STUDIES 8 PRE-AP

180	72.1	75.4	85.0	86.1	67.2	93.9	69.5	95.0
-----	------	------	------	------	------	------	------	------