

DATA PACKET

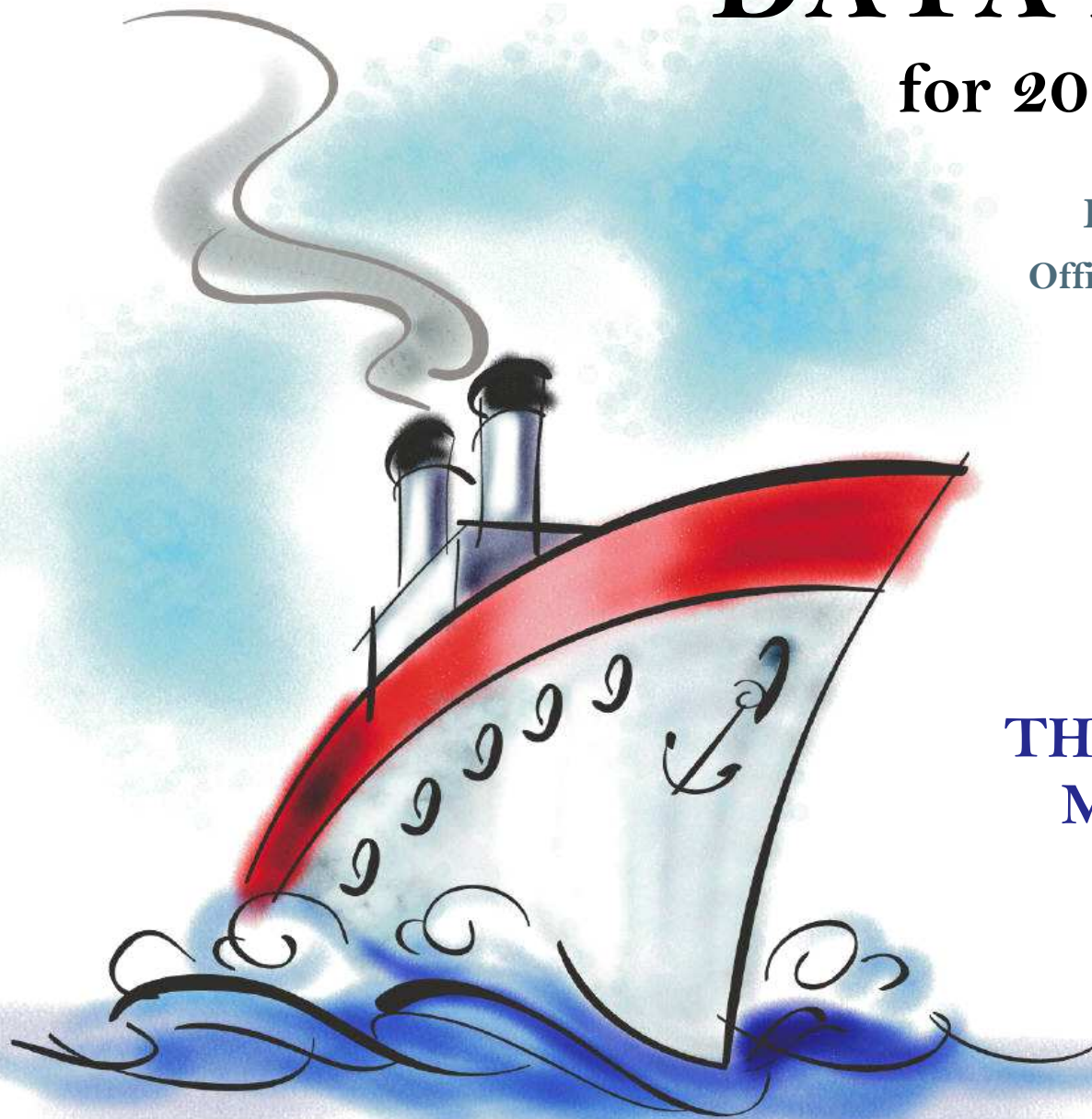
for 2014-15 planning

Evaluation & Assessment
Office of Institutional Research
<http://mydata.dallasisd.org>
OIR@dallasisd.org

September 5, 2014

School Number 54

**THOMAS C. MARSH
MIDDLE SCHOOL**



Dallas Independent School District

2. Contents Table of Contents

STUDENTS AND STAFF

- 5. Summary Summary of Student and Teacher Statistics
- 7. Enroll (2) Enrollment Statistics by Select Student Group
- 9. Teachers Teacher Statistics

STAAR (English)

- 10. Reading (3-8) STAAR 3-8 Reading in English
- 18. Math (3-8) STAAR 3-8 Mathematics in English
- 26. Science (3-8) STAAR 3-8 Science in English

STAAR L

- 34. Math (3-8) STAAR L 3-8 Mathematics
- 42. SS (3-8) STAAR L 3-8 Social Studies

STAAR M

- 46. Reading (3-8) STAAR M 3-8 Reading
- 54. Math (3-8) STAAR M 3-8 Mathematics

ENGLISH PROFICIENCY

- 58. WMLS Woodcock-Muñoz Language Survey

LOCAL ASSESSMENT

- 60. ACP Assessments of Course Performance

3. Notes Notes and Data Descriptions

- 6. Enroll (1) Enrollment Statistics by Ethnicity
- 8. Attendance Student Attendance Statistics

- 14. Writing (3-8) STAAR 3-8 Writing in English
- 22. Math (EOC) STAAR EOC Mathematics
- 30. SS (3-8) STAAR 3-8 Social Studies in English

38. Science (3-8) STAAR L 3-8 Science

50. Writing (3-8) STAAR M 3-8 Writing

59. TELPAS Texas English Language Proficiency Assessment System

2013-14 SCHOOL SUMMARY

- Student percentages are computed as the percentage of total student enrollment.
- Additional statistics are available in ENROLLMENT and TEACHER reports.
- Race/ethnic categories are based on the newest federal standards for ethnicity and race reporting, though some categories have been combined because of small group sizes. Students reporting their ethnicity as “Hispanic” are not counted in any race category.
- “Economically disadvantaged” students are those who qualify for free or reduced-price lunch through the federal government's program.
- Teacher demographics and assignments are from the district's Public Education Information Management System (PEIMS) submission to the TEA.

ENROLLMENT

- Statistics are based on the school's enrollment at the end of the fifth six-weeks grading period.
- “Economically disadvantaged” students are those receiving free or reduced-price lunches.
- “New” students were new to the district in 2013-14. They are counted as new if not enrolled in a district campus before the last day of the 2012-13 school year.
- The “retention rate” is the percentage of students in the same grade at the end of the fifth six-weeks grading period for both 2012-13 and 2013-14.

ATTENDANCE

- Statistics are based on student attendance through the end of the sixth six-weeks grading period (the end of the school year).
- “Average daily membership” is the total number of school days students were ENROLLED divided by the number of school days in the year.
- The “average daily attendance” number (N) is the total number of school days students were IN ATTENDANCE divided by the number of school days in the year. The “average daily attendance” percentage (%) is the average attendance rate. For each student, the number of days attended is divided by the number of days enrolled. This rate is then averaged across students.
- The number (N) of “yearly transactions” is the total number of transfer and withdrawal transactions in the school year. The percentage (%) is the number of transactions divided by “average daily membership,” which gives (on average) the percentage of the membership associated with a transaction.
- “Continuously enrolled” students are enrolled and in attendance for a minimum number of instructional days in at least one course at the school between the beginning of the school year and the first day of the main STAAR testing period. The minimum number varies depending on the school year's calendar, but is typically around 130 days.
- The “stability rate” is the number of continuously enrolled students divided by “average daily membership.”

TEACHERS

- Teacher demographics and assignments are from the district's Public Education Information Management System (PEIMS) submission to the TEA.
- Teacher absences counted towards the average DO NOT include vacation days (coded as VAC in personnel database).
- Retention rate for a school year is computed with numerator “# of teachers assigned to the school both that year and the year prior” and denominator “# of teachers assigned to the school for the prior year.” That is, the retention rate is the percentage of the prior year's teachers who continued at the school.

STAAR, STAAR L, and STAAR M

- Cells marked with an asterisk (*) indicate five or fewer students were tested. Blank cells indicate no students were tested.
- Student group assignments are from the district's Public Education Information Management System (PEIMS) submission to the TEA.
- STAAR statistics are based on results from standard STAAR only. STAAR L and STAAR M statistics are computed separately, following TEA reporting practice.
- “Percentage Satisfactory” is the percentage of students achieving Level 2 (Satisfactory) or Level 3 (Advanced).
- Statistics by reporting category are averages for all students (across student groups and genders).
- An “average percentage correct” is computed as follows: for each student, divide the number of items correctly answered by the total number of items in the test section, then average the resulting percentages across all students. For short answers on EOC English tests, an “average rating” is presented; STAAR EOC short answers are rated on a scale of 0 to 3. For written compositions on writing tests, “average score points” is presented. Additional details provided in report footnotes.
- Reading and mathematics statistics for SSI grades 5 and 8 are based on scores cumulative through the second administration.

TELPAS

- Students are counted as having tested if any one of the four domains is rated. Because a TELPAS composite rating is not assigned to a student unless all four domains are rated, the number of TELPAS composite ratings may be smaller than the number tested.
- If a student's composite rating did not increase at least one level from 2013 to 2014, the TEA did not report the 2013 composite rating.
- If a student is rated as advanced high in 2014, the TEA does not differentiate between the advanced and advanced high levels from 2013.

ACP

- Cells marked with an asterisk (*) indicate five or fewer students were tested. Blank cells indicate no students were tested.
- The ACPs are semester exams administered in grades K-12. Not all courses have ACPs. In MIDDLE and HIGH school, ACP results account for a portion of students' final semester grades (10% and 15% respectively). “Average course mark (no ACP)” is computed from semester grades before factoring in ACP scores. In ELEMENTARY school, ACP results account for 5% of students' semester grades for core courses; course-grade statistics are not reported in data packets for elementary grades.
- Raw scores on the ACPs (percentage of items correct) are scaled each year to maintain similar annual passing rates for the district.
- A scale score of at least 70 percent is required to pass an ACP. A course mark of at least 70 percent is required to pass a course.
- Statistics are computed separately for Semester 1 and Semester 2 tests; time of administration during the school year is not relevant. Results from tests written for different school years are not combined.

STUDENT ENROLLMENT

Grade	Enrollment
6	384
7	396
8	363
ALL	1,143

STUDENT AND TEACHER RACE/ETHNICITY

Ethnicity/Race	Students		Teachers	
	Number	Percent	Number	Percent
Black/African American	66	5.8	20	29.0
American Indian/Alaska Native	0	0.0	*	*
Asian/Hawaiian/Pacific Islander	14	1.2	*	*
Hispanic	980	85.7	10	14.5
White	72	6.3	35	50.7
Multiple	10	0.9	1	1.4
Other* (teachers only)	—	—	3	4.3
Not reported (students only)	0	0.0	—	—

*For teachers, "Other" category includes American Indian/Alaska Native and Asian/Hawaiian/Pacific Islander.

SELECT STUDENT GROUP ENROLLMENT

Group	Number	Percent
At-Risk	952	83.3
Economically disadvantaged	1,000	87.5
Limited English proficient (LEP)	507	44.4
Special education	61	5.3
Talented and Gifted (TAG)	181	15.8

Grade	Year	Enrollment	African American		American Indian		Asian		Hispanic		White		Multiple category	
			N	%	N	%	N	%	N	%	N	%	N	%
6	2012	388	29	7.5	0	0.0	7	1.8	324	83.5	26	6.7	1	0.3
	2013	429	27	6.3	0	0.0	3	0.7	363	84.6	32	7.5	4	0.9
	2014	384	21	5.5	0	0.0	3	0.8	334	87.0	22	5.7	4	1.0
7	2012	380	22	5.8	3	0.8	0	0.0	320	84.2	31	8.2	3	0.8
	2013	389	27	6.9	0	0.0	7	1.8	335	86.1	17	4.4	2	0.5
	2014	396	19	4.8	0	0.0	4	1.0	339	85.6	31	7.8	3	0.8
8	2012	397	36	9.1	1	0.3	1	0.3	328	82.6	30	7.6	1	0.3
	2013	371	19	5.1	3	0.8	0	0.0	307	82.7	38	10.2	2	0.5
	2014	363	26	7.2	0	0.0	7	1.9	307	84.6	19	5.2	3	0.8
6-8	2012	1,165	87	7.5	4	0.3	8	0.7	972	83.4	87	7.5	5	0.4
	2013	1,189	73	6.1	3	0.3	10	0.8	1,005	84.5	87	7.3	8	0.7
	2014	1,143	66	5.8	0	0.0	14	1.2	980	85.7	72	6.3	10	0.9

Grade	Year	Enrollment	Economically Disadvantaged		LEP		Special Education		At Risk		TAG		New (to District)		Gender		Retention Rate (%)
			N	%	N	%	N	%	N	%	N	%	N	%	% Male	% Female	
6	2012	388	332	85.6	232	59.8	16	4.1	287	74.0	67	17.3	31	8.0	52.3	47.7	0.3
	2013	429	376	87.6	223	52.0	25	5.8	333	77.6	90	21.0	29	6.8	56.6	43.4	0.7
	2014	384	340	88.5	197	51.3	27	7.0	341	88.8	56	14.6	23	6.0	49.2	50.8	1.3
7	2012	380	317	83.4	123	32.4	26	6.8	229	60.3	54	14.2	38	10.0	55.0	45.0	1.1
	2013	389	324	83.3	203	52.2	13	3.3	294	75.6	63	16.2	26	6.7	53.2	46.8	0.8
	2014	396	350	88.4	179	45.2	23	5.8	320	80.8	67	16.9	22	5.6	57.3	42.7	0.3
8	2012	397	305	76.8	135	34.0	15	3.8	252	63.5	40	10.1	39	9.8	50.4	49.6	2.8
	2013	371	302	81.4	100	27.0	25	6.7	229	61.7	54	14.6	24	6.5	56.9	43.1	0.8
	2014	363	310	85.4	131	36.1	11	3.0	291	80.2	58	16.0	22	6.1	50.7	49.3	0.6
6-8	2012	1,165	954	81.9	490	42.1	57	4.9	768	65.9	161	13.8	108	9.3	52.5	47.5	1.4
	2013	1,189	1,002	84.3	526	44.2	63	5.3	856	72.0	207	17.4	79	6.6	55.6	44.4	0.8
	2014	1,143	1,000	87.5	507	44.4	61	5.3	952	83.3	181	15.8	67	5.9	52.5	47.5	0.7

Grade	Year	Average Daily Membership		Average Daily Attendance				Yearly Transactions			Continuously Enrolled		Stability Rate	
		N	District	N	%	District N	District %	N	%	District %	N	District	%	District
6	2012	382	10,683	371	97.0	10,315	96.6	54	14.1	17.6	350	9,420	91.5	88.2
	2013	428	11,463	417	97.3	11,062	96.5	48	11.2	21.1	410	10,320	95.7	90.0
	2014	389	10,808	378	97.0	10,413	96.3	44	11.3	20.0	361	9,554	92.8	88.4
7	2012	377	10,204	364	96.5	9,727	95.3	56	14.8	23.8	339	8,576	89.9	84.0
	2013	391	10,542	379	96.8	10,116	96.0	53	13.5	24.5	368	9,357	94.0	88.8
	2014	401	11,195	388	96.8	10,729	95.8	50	12.5	22.1	370	9,852	92.3	88.0
8	2012	395	10,369	378	95.5	9,838	94.9	49	12.4	15.5	342	8,711	86.5	84.0
	2013	375	9,955	363	96.7	9,486	95.3	26	6.9	17.6	348	8,664	92.7	87.0
	2014	367	10,449	353	96.1	9,970	95.4	35	9.5	13.1	331	9,097	90.2	87.1
6-8	2012	1,155	31,256	1,113	96.3	29,880	95.6	159	13.8	18.9	1,031	26,707	89.3	85.4
	2013	1,195	31,960	1,159	97.0	30,665	96.0	127	10.6	21.1	1,126	28,341	94.2	88.7
	2014	1,157	32,451	1,118	96.7	31,112	95.9	129	11.2	18.5	1,062	28,503	91.8	87.8

Teachers: 69

DISTRIBUTIONS

Ethnicity/Race	Number	Percentage
African American	20	29.0
Hispanic	10	14.5
White	35	50.7
Multiple	1	1.4
Other	3	4.3

Gender	Number	Percentage
Female	45	65.2
Male	24	34.8

ATTENDANCE / RETENTION

	Average Absences	Retention Rate
2011-12	7.2	—
2012-13	7.9	73.5
2013-14	7.9	69.1

YEARS EXPERIENCE

Years	Number	Percentage
Beginning (0)	10	14.5
1	14	20.3
2	1	1.4
3	5	7.2
4	2	2.9
5	2	2.9
1-3	20	29.0
More than 3	39	56.5
1 - 5	24	34.8
6 - 10	10	14.5
11 - 20	19	27.5
More than 20	6	8.7

PERCENTAGE SATISFACTORY (Levels 2 or 3)

Grade	Year	White	African Amer	Hispanic	Econ Disadv	Special Educ	LEP	At Risk	Migrant	Male	Female	All	District	Number Tested (All Students)
6	2012	88.0	53.6	67.8	66.3	*	61.0	59.0		66.0	70.9	68.4	63.5	376
	2013	90.6	58.3	54.9	56.0	12.5	41.9	42.9		56.3	60.8	58.3	57.7	412
	2014	95.2	70.0	62.4	63.9	7.7	59.0	57.9	*	57.5	71.5	64.7	63.1	374
7	2012	87.5	81.8	65.2	66.6	14.3	45.6	54.5		65.3	72.5	68.6	67.5	357
	2013	100.0	72.0	65.7	66.8	33.3	56.5	57.0		64.2	73.2	68.4	67.3	380
	2014	86.7	66.7	56.4	56.7	28.6	38.1	43.0		58.3	61.1	59.5	60.5	390
8	2012	93.1	87.9	77.4	77.7	*	59.5	67.2		78.1	80.6	79.4	71.3	383
	2013	100.0	88.9	81.8	82.2	66.7	63.3	72.4		80.4	88.5	84.0	82.7	356
	2014	100.0	70.4	77.5	78.8	57.1	66.9	70.6		74.2	83.1	78.6	81.5	359
6-8	2012	89.5	74.7	70.2	70.1	37.5	56.8	60.3		69.7	74.9	72.2	67.4	1,116
	2013	96.6	71.6	66.7	67.3	35.0	51.3	55.5		66.4	73.5	69.6	68.6	1,148
	2014	92.9	69.2	65.0	66.0	26.5	54.9	57.1	*	63.0	72.1	67.3	68.2	1,123

NUMBER TESTED IN GRADES 6-8													
2012	86	83	931	895	16	463	642			571	545	1,116	29,211
2013	87	67	969	944	20	524	659			631	517	1,148	29,692
2014	70	65	964	865	34	592	808	2		586	537	1,123	30,015

NUMBER UNSATISFACTORY (Level 1)

Grade	Year	White	African Amer	Hispanic	Econ Disadv	Special Educ	LEP	At Risk	Migrant	Male	Female	All	District	Number Tested (All Students)
6	2012	3	13	101	106	*	87	103		66	53	119	3,673	376
	2013	3	10	158	158	7	132	144		101	71	172	4,523	412
	2014	1	6	123	107	12	98	128	*	77	55	132	3,679	374
7	2012	4	4	104	98	6	62	85		66	46	112	3,070	357
	2013	0	7	112	101	4	90	102		72	48	120	3,215	380
	2014	4	6	146	130	10	112	146		93	65	158	4,075	390
8	2012	2	4	72	64	*	51	67		41	38	79	2,786	383
	2013	0	2	53	50	2	33	47		39	18	57	1,586	356
	2014	0	8	68	57	3	57	73		47	30	77	1,797	359
6-8	2012	9	21	277	268	10	200	255		173	137	310	9,529	1,116
	2013	3	19	323	309	13	255	293		212	137	349	9,324	1,148
	2014	5	20	337	294	25	267	347	*	217	150	367	9,551	1,123

NUMBER TESTED IN GRADES 6-8													
2012	86	83	931	895	16	463	642			571	545	1,116	29,211
2013	87	67	969	944	20	524	659			631	517	1,148	29,692
2014	70	65	964	865	34	592	808	2		586	537	1,123	30,015

PERCENTAGE ADVANCED (Level 3)

Grade	Year	White	African Amer	Hispanic	Econ Disadv	Special Educ	LEP	At Risk	Migrant	Male	Female	All	District	Number Tested (All Students)
6	2012	20.0	3.6	8.3	7.9	*	4.5	4.4		11.3	6.6	9.0	8.3	376
	2013	46.9	4.2	8.0	7.8	0.0	0.9	2.4		12.1	10.5	11.4	11.3	412
	2014	28.6	5.0	3.1	4.1	0.0	2.5	2.0	*	4.4	4.7	4.5	7.1	374
7	2012	25.0	13.6	9.4	8.9	0.0	6.1	5.9		8.4	15.0	11.5	10.3	357
	2013	16.7	4.0	6.4	5.9	0.0	4.3	4.6		5.0	8.9	6.8	8.7	380
	2014	23.3	0.0	5.4	4.7	0.0	0.6	0.8		8.1	5.4	6.9	10.0	390
8	2012	37.9	18.2	8.8	8.0	*	2.4	3.4		8.6	14.8	11.7	9.9	383
	2013	37.8	11.1	12.7	11.7	0.0	2.2	7.1		11.6	21.0	15.7	15.5	356
	2014	15.8	7.4	9.9	11.2	0.0	5.2	5.2		6.6	14.1	10.3	13.1	359
6-8	2012	27.9	12.0	8.8	8.3	0.0	4.3	4.5		9.5	12.1	10.8	9.5	1,116
	2013	36.8	6.0	8.9	8.4	0.0	2.5	4.4		9.7	13.2	11.2	11.7	1,148
	2014	22.9	4.6	6.0	6.5	0.0	2.7	2.6	*	6.5	8.0	7.2	10.1	1,123

NUMBER TESTED IN GRADE 6-8													
2012	86	83	931	895	16	463	642		571	545	1,116	29,211	
2013	87	67	969	944	20	524	659		631	517	1,148	29,692	
2014	70	65	964	865	34	592	808	2	586	537	1,123	30,015	

AVERAGE PERCENTAGE OF ITEMS CORRECT BY REPORTING CATEGORY

Grade	Year	REPORTING CATEGORY		
		1. Understanding Across Genres (GR 3-5) 1. Understanding/Analysis Across Genres (GR 6-8)	2. Understanding/Analysis of Literary Texts	3. Understanding/Analysis of Informational Texts
6	2012	71.1	63.9	59.2
	2013	61.9	60.0	59.3
	2014	59.9	55.9	59.6
7	2012	71.2	58.9	65.4
	2013	57.6	57.2	65.4
	2014	58.8	54.9	53.8
8	2012	67.2	63.3	64.4
	2013	70.9	68.9	64.3
	2014	65.8	62.9	62.6
6-8	2012	69.8	62.1	62.9
	2013	63.2	61.8	62.9
	2014	61.4	57.8	58.5

PERCENTAGE SATISFACTORY (Levels 2 or 3)

Grade	Year	White	African Amer	Hispanic	Econ Disadv	Special Educ	LEP	At Risk	Migrant	Male	Female	All	District	Number Tested (All Students)
7	2012	84.4	77.3	61.4	63.4	*	41.2	48.4		56.8	74.1	64.9	59.2	356
	2013	73.7	50.0	54.0	54.1	16.7	42.7	40.3		46.0	66.5	55.6	57.1	381
	2014	73.3	66.7	42.1	43.9	7.1	20.2	26.7		42.9	50.6	46.2	54.6	392

NUMBER TESTED IN GRADE 7													
2012	32	22	298	292	5	114	186		190	166	356	9,456	
2013	19	26	326	303	6	206	238		202	179	381	9,785	
2014	30	18	337	301	14	183	258		224	168	392	10,339	

NUMBER UNSATISFACTORY (Level 1)

Grade	Year	White	African Amer	Hispanic	Econ Disadv	Special Educ	LEP	At Risk	Migrant	Male	Female	All	District	Number Tested (All Students)
7	2012	5	5	115	107	*	67	96		82	43	125	3,859	356
	2013	5	13	150	139	5	118	142		109	60	169	4,198	381
	2014	8	6	195	169	13	146	189		128	83	211	4,690	392

NUMBER TESTED IN GRADE 7													
2012	32	22	298	292	5	114	186		190	166	356	9,456	
2013	19	26	326	303	6	206	238		202	179	381	9,785	
2014	30	18	337	301	14	183	258		224	168	392	10,339	

PERCENTAGE ADVANCED (Level 3)

Grade	Year	White	African Amer	Hispanic	Econ Disadv	Special Educ	LEP	At Risk	Migrant	Male	Female	All	District	Number Tested (All Students)
7	2012	9.4	0.0	2.3	1.7	*	0.0	0.5		1.1	5.4	3.1	3.4	356
	2013	0.0	0.0	0.0	0.0	0.0	0.0	0.0		0.0	0.0	0.0	1.5	381
	2014	3.3	0.0	0.6	0.7	0.0	0.0	0.0		0.0	1.8	0.8	3.0	392

NUMBER TESTED IN GRADE 7													
2012	32	22	298	292	5	114	186		190	166	356	9,456	
2013	19	26	326	303	6	206	238		202	179	381	9,785	
2014	30	18	337	301	14	183	258		224	168	392	10,339	

AVERAGE PERCENTAGE OF ITEMS CORRECT BY REPORTING CATEGORY

Grade	Year	REPORTING CATEGORY			
		1. Composition ¹ GR 4: Personal Narrative GR 7: Expository	1. Composition ¹ GR 4: Expository GR 7: Personal Narrative	2. Revision	3. Editing
7	2012	1.9	2.3	66.0	59.9
	2013	3.9	4.6	61.4	59.5
	2014	3.6	4.2	60.1	51.5

¹Average score points (range 0-8). A STAAR composition is rated twice on a scale of 1 to 4, and the ratings are summed to determine score points for the composition. Score point scale: 0=Non-scorable; 2=Very Limited; 3=between Very Limited and Basic; 4=Basic; 5=between Basic and Satisfactory; 6=Satisfactory; 7=between Satisfactory and Accomplished; 8=Accomplished

PERCENTAGE SATISFACTORY (Levels 2 or 3)

Grade	Year	White	African Amer	Hispanic	Econ Disadv	Special Educ	LEP	At Risk	Migrant	Male	Female	All	District	Number Tested (All Students)
6	2012	88.0	60.7	81.5	80.6	*	81.1	77.3		82.1	79.4	80.8	66.4	365
	2013	90.6	54.2	74.3	73.4	30.0	68.8	64.5		75.6	73.7	74.8	60.6	404
	2014	95.2	55.0	69.3	70.6	21.4	68.1	65.3	*	67.8	71.6	69.7	64.3	370
7	2012	96.9	71.4	76.0	75.9	71.4	65.0	64.1		75.4	80.9	78.0	59.9	345
	2013	83.3	38.5	65.6	63.9	57.1	59.7	56.1		61.1	69.8	65.2	59.9	365
	2014	82.8	38.9	56.7	55.8	6.7	43.6	43.3		57.8	57.9	57.9	55.1	382
8	2012	75.0	52.2	65.5	62.9	*	60.4	59.9		66.4	62.5	64.6	51.9	268
	2013	*	54.5	80.4	77.9	62.5	73.7	73.0		75.8	81.1	78.0	74.0	173
	2014	90.0	56.5	73.2	72.2	33.3	69.4	65.7		69.2	77.2	73.0	73.2	270
6-8	2012	89.9	61.1	75.1	74.2	73.3	72.0	68.1		75.4	75.3	75.4	60.3	978
	2013	85.5	47.5	72.1	70.7	48.0	65.7	62.9		70.2	73.4	71.7	63.7	942
	2014	88.3	50.8	65.6	65.6	17.1	60.6	58.2	*	64.1	68.4	66.1	63.3	1,022

NUMBER TESTED IN GRADES 6-8													
2012	69	72	823	796	15	421	580			513	465	978	26,044
2013	55	61	806	792	25	463	580			517	425	942	26,676
2014	60	61	882	794	35	541	748	2		541	481	1,022	27,304

NUMBER UNSATISFACTORY (Level 1)

Grade	Year	White	African Amer	Hispanic	Econ Disadv	Special Educ	LEP	At Risk	Migrant	Male	Female	All	District	Number Tested (All Students)
6	2012	3	11	56	59	*	40	55		34	36	70	3,327	365
	2013	3	11	88	94	7	67	86		55	47	102	4,133	404
	2014	1	9	99	86	11	75	104	*	58	54	112	3,478	370
7	2012	1	6	69	68	2	36	65		45	31	76	3,705	345
	2013	3	16	107	106	3	77	98		75	52	127	3,851	365
	2014	5	11	142	129	14	97	140		92	69	161	4,536	382
8	2012	3	11	80	78	*	42	73		47	48	95	3,319	268
	2013	*	5	30	32	3	15	31		24	14	38	1,709	173
	2014	1	10	62	58	4	41	69		44	29	73	2,001	270
6-8	2012	7	28	205	205	4	118	193		126	115	241	10,351	978
	2013	8	32	225	232	13	159	215		154	113	267	9,693	942
	2014	7	30	303	273	29	213	313	*	194	152	346	10,015	1,022

NUMBER TESTED IN GRADES 6-8													
2012	69	72	823	796	15	421	580		513	465	978	26,044	
2013	55	61	806	792	25	463	580		517	425	942	26,676	
2014	60	61	882	794	35	541	748	2	541	481	1,022	27,304	

PERCENTAGE ADVANCED (Level 3)

Grade	Year	White	African Amer	Hispanic	Econ Disadv	Special Educ	LEP	At Risk	Migrant	Male	Female	All	District	Number Tested (All Students)
6	2012	24.0	7.1	18.2	16.8	*	15.1	12.8		18.4	17.1	17.8	9.8	365
	2013	40.6	0.0	11.4	11.6	0.0	7.0	6.6		15.1	11.7	13.6	8.5	404
	2014	38.1	0.0	7.4	7.5	0.0	5.5	4.7	*	8.9	8.4	8.6	9.6	370
7	2012	28.1	19.0	13.2	13.5	0.0	9.7	7.2		14.8	15.4	15.1	6.3	345
	2013	5.6	0.0	6.1	5.1	0.0	5.8	4.0		3.6	7.6	5.5	4.8	365
	2014	24.1	0.0	4.0	4.5	0.0	1.2	0.8		6.0	4.9	5.5	6.7	382
8	2012	0.0	0.0	1.3	1.4	*	0.9	0.5		0.7	1.6	1.1	0.4	268
	2013	*	0.0	0.7	0.7	0.0	0.0	0.0		0.0	1.4	0.6	0.9	173
	2014	0.0	0.0	2.6	1.9	0.0	1.5	1.5		2.8	1.6	2.2	1.0	270
6-8	2012	21.7	8.3	11.7	11.6	0.0	10.2	7.4		12.3	12.3	12.3	6.1	978
	2013	25.5	0.0	7.3	7.2	0.0	5.6	4.3		7.9	8.2	8.1	5.3	942
	2014	25.0	0.0	4.9	4.9	0.0	3.1	2.5	*	6.1	5.4	5.8	6.2	1,022

NUMBER TESTED IN GRADE 6-8													
2012	69	72	823	796	15	421	605			513	465	978	26,044
2013	55	61	806	792	25	463	580			517	425	942	26,676
2014	60	61	882	794	35	541	748	2		541	481	1,022	27,304

AVERAGE PERCENTAGE OF ITEMS CORRECT BY REPORTING CATEGORY

Grade	Year	REPORTING CATEGORY				
		1. Numbers, Operations, and Quantitative Reasoning	2. Patterns, Relationships, and Algebraic Reasoning	3. Geometry and Spatial Reasoning	4. Measurement	5. Probability and Statistics
6	2012	59.4	66.4	61.3	55.0	58.8
	2013	61.9	61.0	57.0	48.5	57.2
	2014	56.0	53.8	57.7	50.1	58.3
7	2012	60.6	61.6	64.7	58.0	55.4
	2013	54.9	56.1	56.1	43.8	45.3
	2014	57.9	49.3	44.1	45.7	52.2
8	2012	49.9	45.5	43.3	42.0	48.5
	2013	49.5	51.5	44.7	44.0	44.8
	2014	50.8	51.2	48.7	42.9	53.0
6-8	2012	57.2	59.0	57.6	52.5	54.8
	2013	56.9	57.4	54.4	45.9	50.3
	2014	55.4	51.4	50.2	46.6	54.6

PERCENTAGE SATISFACTORY (Levels 2 or 3)

Test	Year	White	African Amer	Hispanic	Econ Disadv	Special Educ	LEP	At Risk	Migrant	Male	Female	All	District
ALGEBRA I (GRADE 8)	2012	93.8	100.0	97.4	97.2		100.0	93.3		93.0	100.0	97.2	94.1
	2013	90.9	85.7	94.5	92.9	*	100.0	91.3		92.4	95.0	93.6	95.4
	2014	75.0	*	93.3	94.7	*	88.9	86.5		93.9	90.9	92.2	97.2
Tests Taken	2012	16	11	76	71		11	46		43	63	106	2,554
	2013	33	7	128	126	1	21	46		92	80	172	2,474
	2014	8	4	60	57	1	27	37		33	44	77	2,117

NUMBER UNSATISFACTORY (Level 1)

Test	Year	White	African Amer	Hispanic	Econ Disadv	Special Educ	LEP	At Risk	Migrant	Male	Female	All	District
ALGEBRA I (GRADE 8)	2012	1	0	2	2		0	1		3	0	3	151
	2013	3	1	7	9	*	0	4		7	4	11	115
	2014	2	*	4	3	*	3	5		2	4	6	60
Tests Taken	2012	16	11	76	71		11	46		43	63	106	2,554
	2013	33	7	128	126	1	21	46		92	80	172	2,474
	2014	8	4	60	57	1	27	37		33	44	77	2,117

PERCENTAGE ADVANCED (Level 3)

Test	Year	White	African Amer	Hispanic	Econ Disadv	Special Educ	LEP	At Risk	Migrant	Male	Female	All	District
ALGEBRA I (GRADE 8)	2012	18.8	9.1	27.6	28.2		36.4	26.7		14.0	30.2	23.6	19.0
	2013	24.2	28.6	14.1	13.5	*	0.0	2.2		16.3	16.3	16.3	24.2
	2014	0.0	*	11.7	10.5	*	7.4	5.4		0.0	15.9	9.1	28.8
Tests Taken	2012	16	11	76	71		11	15		43	63	106	2,554
	2013	33	7	128	126	1	21	46		92	80	172	2,474
	2014	8	4	60	57	1	27	37		33	44	77	2,117

AVERAGE PERCENTAGE OF ITEMS CORRECT BY REPORTING CATEGORY

ALGEBRA I (GRADE 8)	1. Functional Relationships	2. Properties and Attributes of Functions	3. Linear Functions	4. Linear Equations and Inequalities	5. Quadratic and Other Nonlinear Functions
2012	66.6	65.3	68.6	63.4	63.4
2013	63.1	55.3	63.8	64.4	57.5
2014	60.4	53.5	60.3	65.5	52.2

PERCENTAGE SATISFACTORY (Levels 2 or 3)

Grade	Year	White	African Amer	Hispanic	Econ Disadv	Special Educ	LEP	At Risk	Migrant	Male	Female	All	District	Number Tested (All Students)
8	2012	92.6	78.8	63.5	64.0	*	44.0	50.0		74.4	59.8	66.9	54.0	369
	2013	97.4	61.1	80.4	80.1	66.7	67.5	64.8		83.2	79.9	81.7	65.8	344
	2014	84.2	42.3	69.0	66.9	16.7	57.9	56.4		64.8	71.8	68.2	61.9	346

NUMBER TESTED IN GRADE 8													
2012	27	33	307	272	4	116	194		180	189	369	9,431	
2013	38	18	281	271	9	77	162		190	154	344	8,998	
2014	19	26	290	248	6	159	236		176	170	346	9,466	

NUMBER UNSATISFACTORY (Level 1)

Grade	Year	White	African Amer	Hispanic	Econ Disadv	Special Educ	LEP	At Risk	Migrant	Male	Female	All	District	Number Tested (All Students)
8	2012	2	7	112	98	*	65	97		46	76	122	4335	369
	2013	1	7	55	54	3	25	57		32	31	63	3074	344
	2014	3	15	90	82	5	67	103		62	48	110	3605	346

NUMBER TESTED IN GRADE 8													
2012	27	33	307	272	4	116	194		180	189	369	9,431	
2013	38	18	281	271	9	77	162		190	154	344	8,998	
2014	19	26	290	248	6	159	236		176	170	346	9,466	

PERCENTAGE ADVANCED (Level 3)

Grade	Year	White	African Amer	Hispanic	Econ Disadv	Special Educ	LEP	At Risk	Migrant	Male	Female	All	District	Number Tested (All Students)
8	2012	18.5	3.0	2.3	1.8	*	0.0	0.0		3.3	3.7	3.5	4.2	369
	2013	28.9	11.1	6.8	6.6	0.0	2.6	3.7		12.6	5.8	9.6	7.1	344
	2014	5.3	0.0	14.8	13.3	0.0	9.4	8.1		13.1	14.1	13.6	11.3	346

NUMBER TESTED IN GRADE 8													
2012	27	33	307	272	4	116	194		180	189	369	9,431	
2013	38	18	281	271	9	77	162		190	154	344	8,998	
2014	19	26	290	248	6	159	236		176	170	346	9,466	

AVERAGE PERCENTAGE OF ITEMS CORRECT BY REPORTING CATEGORY

Grade	Year	REPORTING CATEGORY			
		1. Matter and Energy	2. Force, Motion, and Energy	3. Earth and Space	4. Organisms and Environments
8	2012	59.4	57.7	60.7	60.3
	2013	70.8	59.4	66.7	62.7
	2014	66.5	58.4	61.4	68.6

PERCENTAGE SATISFACTORY (Levels 2 or 3)

Grade	Year	White	African Amer	Hispanic	Econ Disadv	Special Educ	LEP	At Risk	Migrant	Male	Female	All	District	Number Tested (All Students)
8	2012	92.6	81.8	57.4	59.6	*	33.6	41.1		65.4	59.6	62.4	52.5	367
	2013	89.5	66.7	63.8	64.1	45.5	43.6	47.0		67.2	66.9	67.1	59.3	346
	2014	78.9	61.5	55.6	56.3	33.3	44.3	46.0		60.2	56.5	58.4	53.5	344

NUMBER TESTED IN GRADE 8													
2012	27	33	305	270	4	116	192		179	188	367	9,392	
2013	38	18	282	273	11	78	164		192	154	346	8,991	
2014	19	26	288	247	6	158	235		176	168	344	9,464	

NUMBER UNSATISFACTORY (Level 1)

Grade	Year	White	African Amer	Hispanic	Econ Disadv	Special Educ	LEP	At Risk	Migrant	Male	Female	All	District	Number Tested (All Students)
8	2012	2	6	130	109	*	77	113		62	76	138	4462	367
	2013	4	6	102	98	6	44	87		63	51	114	3656	346
	2014	4	10	128	108	4	88	127		70	73	143	4402	344

NUMBER TESTED IN GRADE8													
2012	27	33	305	270	4	116	192		179	188	367	9,392	
2013	38	18	282	273	11	78	164		192	154	346	8,991	
2014	19	26	288	247	6	158	235		176	168	344	9,464	

PERCENTAGE ADVANCED (Level 3)

Grade	Year	White	African Amer	Hispanic	Econ Disadv	Special Educ	LEP	At Risk	Migrant	Male	Female	All	District	Number Tested (All Students)
8	2012	25.9	9.1	5.9	5.6	*	0.0	0.0		8.4	6.9	7.6	7.1	367
	2013	34.2	11.1	8.5	8.1	0.0	1.3	2.4		12.0	10.4	11.3	8.8	346
	2014	15.8	0.0	6.6	6.9	0.0	2.5	2.6		7.4	5.4	6.4	7.3	344

NUMBER TESTED IN GRADE 8													
2012	27	33	305	270	4	116	192		179	188	367	9,392	
2013	38	18	282	273	11	78	164		192	154	346	8,991	
2014	19	26	288	247	6	158	235		176	168	344	9,464	

AVERAGE PERCENTAGE OF ITEMS CORRECT BY REPORTING CATEGORY

Grade	Year	REPORTING CATEGORY			
		1. History	2. Geography and Culture	3. Government and Citizenship	4. Economics, Science, Technology, and Society
8	2012	53.3	56.6	55.1	52.2
	2013	60.7	65.4	51.7	54.2
	2014	57.9	46.2	54.0	55.1

PERCENTAGE SATISFACTORY (Levels 2 or 3)

Grade	Year	White	African Amer	Hispanic	Econ Disadv	Special Educ	LEP	At Risk	Migrant	Male	Female	All	District	Number Tested (All Students)
6	2012			45.5	45.5		45.5	55.6		*	28.6	45.5	22.8	11
	2013			22.2	28.6		22.2	22.2		33.3	*	22.2	30.6	9
	2014			16.7	*	*	16.7	16.7		*	*	16.7	29.0	6
7	2012			8.3	9.1		8.3	16.7		11.1	*	8.3	16.9	12
	2013			33.3	40.0		33.3	35.7		50.0	14.3	33.3	24.3	15
	2014	*		12.5	22.2		22.2	22.2		16.7	*	22.2	24.8	9
8	2012			0.0	0.0		0.0	0.0		*	*	0.0	0.0	9
	2013			7.7	8.3		7.7	0.0		10.0	*	7.7	25.5	13
	2014			0.0	*		0.0	0.0		0.0	0.0	0.0	33.2	12
6-8	2012			19.4	19.4		18.8	26.1		23.5	13.3	18.8	12.7	32
	2013			21.6	24.1		21.6	20.0		29.2	7.7	21.6	26.8	37
	2014	*		7.7	10.5	*	11.1	11.1		13.3	8.3	11.1	29.1	27

NUMBER TESTED IN GRADES 6-8													
2012			31	31		32	23		17	15	32	620	
2013			37	29		37	35		24	13	37	634	
2014	1		26	19	1	27	27		15	12	27	722	

NUMBER UNSATISFACTORY (Level 1)

Grade	Year	White	African Amer	Hispanic	Econ Disadv	Special Educ	LEP	At Risk	Migrant	Male	Female	All	District	Number Tested (All Students)
6	2012			6	6		6	4		*	5	6	146	11
	2013			7	5		7	7		4	*	7	150	9
	2014			5	*	*	5	5		*	*	5	171	6
7	2012			11	10		11	5		8	*	11	177	12
	2013			10	6		10	9		4	6	10	162	15
	2014	*		7	7		7	7		5	*	7	176	9
8	2012			8	9		9	8		*	*	9	218	9
	2013			12	11		12	12		9	*	12	152	13
	2014			12	*		12	12		6	6	12	165	12
6-8	2012			25	25		26	17		13	13	26	541	32
	2013			29	22		29	28		17	12	29	464	37
	2014	*		24	17	*	24	24		13	11	24	512	27

NUMBER TESTED IN GRADES 6-8													
2012			31	31		32	23			17	15	32	620
2013			37	29		37	35			24	13	37	634
2014	1		26	19	1	27	27			15	12	27	722

PERCENTAGE ADVANCED (Level 3)

Grade	Year	White	African Amer	Hispanic	Econ Disadv	Special Educ	LEP	At Risk	Migrant	Male	Female	All	District	Number Tested (All Students)
6	2012			0.0	0.0		0.0	0.0		*	0.0	0.0	1.1	11
	2013			0.0	0.0		0.0	0.0		0.0	*	0.0	2.3	9
	2014			0.0	*	*	0.0	0.0		*	*	0.0	3.3	6
7	2012			0.0	0.0		0.0	0.0		0.0	*	0.0	0.0	12
	2013			0.0	0.0		0.0	0.0		0.0	0.0	0.0	0.9	15
	2014	*		0.0	0.0		0.0	0.0		0.0	*	0.0	0.0	9
8	2012			0.0	0.0		0.0	0.0		*	*	0.0	0.0	9
	2013			0.0	0.0		0.0	0.0		0.0	*	0.0	0.0	13
	2014			0.0	*		0.0	0.0		0.0	0.0	0.0	0.4	12
6-8	2012			0.0	0.0		0.0	0.0		0.0	0.0	0.0	0.3	32
	2013			0.0	0.0		0.0	0.0		0.0	0.0	0.0	1.1	37
	2014	*		0.0	0.0	*	0.0	0.0		0.0	0.0	0.0	1.2	27

NUMBER TESTED IN GRADE 6-8													
2012			31	31		32	23		17	15	32	620	
2013			37	29		37	35		24	13	37	634	
2014	1		26	19	1	27	27		15	12	27	722	

AVERAGE PERCENTAGE OF ITEMS CORRECT BY REPORTING CATEGORY

Grade	Year	REPORTING CATEGORY				
		1. Numbers, Operations, and Quantitative Reasoning	2. Patterns, Relationships, and Algebraic Reasoning	3. Geometry and Spatial Reasoning	4. Measurement	5. Probability and Statistics
6	2012	42.0	43.2	45.5	44.3	35.2
	2013	28.5	30.6	20.8	29.2	26.4
	2014	34.4	45.8	33.3	31.3	22.9
7	2012	32.1	28.2	37.5	31.3	35.0
	2013	27.2	35.9	38.0	29.2	30.7
	2014	26.5	33.3	32.2	25.0	26.7
8	2012	41.4	43.7	50.0	47.9	51.1
	2013	30.1	28.6	16.3	28.4	20.0
	2014	24.2	29.8	17.7	23.1	30.0
6-8	2012	38.1	37.7	43.8	40.4	39.6
	2013	28.5	32.0	26.2	28.9	25.9
	2014	27.2	34.5	26.0	25.5	27.3

PERCENTAGE SATISFACTORY (Levels 2 or 3)

Grade	Year	White	African Amer	Hispanic	Econ Disadv	Special Educ	LEP	At Risk	Migrant	Male	Female	All	District	Number Tested (All Students)
8	2012			40.0	40.0		36.4	50.0		*	33.3	36.4	14.2	11
	2013			0.0	0.0		0.0	0.0		0.0	*	0.0	13.3	13
	2014			18.2	*		18.2	18.2		*	16.7	18.2	17.0	11

NUMBER TESTED IN GRADE 8													
2012			10	10		11	8		5	6	11	226	
2013			13	12		13	12		10	3	13	210	
2014			11	4		11	11		5	6	11	277	

NUMBER UNSATISFACTORY (Level 1)

Grade	Year	White	African Amer	Hispanic	Econ Disadv	Special Educ	LEP	At Risk	Migrant	Male	Female	All	District	Number Tested (All Students)
8	2012			6	6		7	4		*	4	7	194	11
	2013			13	12		13	12		10	*	13	182	13
	2014			9	*		9	9		*	5	9	230	11

NUMBER TESTED IN GRADE 8													
2012			10	10		11	8		5	6	11	226	
2013			13	12		13	12		10	3	13	210	
2014			11	4		11	11		5	6	11	277	

PERCENTAGE ADVANCED (Level 3)

Grade	Year	White	African Amer	Hispanic	Econ Disadv	Special Educ	LEP	At Risk	Migrant	Male	Female	All	District	Number Tested (All Students)
8	2012			0.0	0.0		0.0	0.0		*	0.0	0.0	0.0	11
	2013			0.0	0.0		0.0	0.0		0.0	*	0.0	0.0	13
	2014			0.0	*		0.0	0.0		*	0.0	0.0	0.0	11

NUMBER TESTED IN GRADE 8													
2012			10	10		11	8		5	6	11	226	
2013			13	12		13	12		10	3	13	210	
2014			11	4		11	11		5	6	11	277	

AVERAGE PERCENTAGE OF ITEMS CORRECT BY REPORTING CATEGORY

Grade	Year	REPORTING CATEGORY			
		1. Matter and Energy	2. Force, Motion, and Energy	3. Earth and Space	4. Organisms and Environments
8	2012	44.8	46.2	56.5	52.6
	2013	43.4	37.8	32.4	38.5
	2014	30.5	33.3	39.6	41.6

PERCENTAGE SATISFACTORY (Levels 2 or 3)

Grade	Year	White	African Amer	Hispanic	Econ Disadv	Special Educ	LEP	At Risk	Migrant	Male	Female	All	District	Number Tested (All Students)
8	2012			40.0	40.0		36.4	50.0		*	16.7	36.4	11.1	11
	2013			23.1	16.7		23.1	25.0		10.0	*	23.1	18.6	13
	2014			9.1	*		9.1	9.1		*	0.0	9.1	11.0	11

NUMBER TESTED IN GRADE 8													
2012			10	10		11	8		5	6	11	226	
2013			13	12		13	12		10	3	13	204	
2014			11	4		11	11		5	6	11	272	

NUMBER UNSATISFACTORY (Level 1)

Grade	Year	White	African Amer	Hispanic	Econ Disadv	Special Educ	LEP	At Risk	Migrant	Male	Female	All	District	Number Tested (All Students)
8	2012			6	6		7	4		*	5	7	201	11
	2013			10	10		10	9		9	*	10	166	13
	2014			10	*		10	10		*	6	10	242	11

NUMBER TESTED IN GRADE8													
2012			10	10		11	8		5	6	11	226	
2013			13	12		13	12		10	3	13	204	
2014			11	4		11	11		5	6	11	272	

PERCENTAGE ADVANCED (Level 3)

Grade	Year	White	African Amer	Hispanic	Econ Disadv	Special Educ	LEP	At Risk	Migrant	Male	Female	All	District	Number Tested (All Students)
8	2012			0.0	0.0		0.0	0.0		*	0.0	0.0	0.0	11
	2013			0.0	0.0		0.0	0.0		0.0	*	0.0	1.0	13
	2014			0.0	*		0.0	0.0		*	0.0	0.0	0.4	11

NUMBER TESTED IN GRADE 8													
2012			10	10		11	8		5	6	11	226	
2013			13	12		13	12		10	3	13	204	
2014			11	4		11	11		5	6	11	272	

AVERAGE PERCENTAGE OF ITEMS CORRECT BY REPORTING CATEGORY

Grade	Year	REPORTING CATEGORY			
		1. History	2. Geography and Culture	3. Government and Citizenship	4. Economics, Science, Technology, and Society
8	2012	39.1	50.8	38.6	36.4
	2013	33.1	38.5	42.3	34.6
	2014	26.8	34.8	28.8	19.3

PERCENTAGE SATISFACTORY (Levels 2 or 3)

Grade	Year	White	African Amer	Hispanic	Econ Disadv	Special Educ	LEP	At Risk	Migrant	Male	Female	All	District	Number Tested (All Students)
6	2012		*	60.0	63.6	63.6	50.0	63.6		62.5	*	63.6	65.5	11
	2013		*	50.0	50.0	47.1	16.7	38.5		50.0	*	47.1	55.9	17
	2014		*	30.0	50.0	41.7	33.3	41.7		45.5	*	41.7	51.6	12
7	2012		*	56.3	63.2	65.0	55.6	64.3		53.3	*	65.0	57.3	20
	2013	*	*	16.7	12.5	12.5	*	12.5		0.0	*	12.5	61.0	8
	2014	*	*	25.0	33.3	30.0	16.7	25.0		25.0	*	30.0	55.4	10
8	2012		*	66.7	75.0	72.7	71.4	66.7		70.0	*	72.7	58.0	11
	2013		*	93.8	100.0	94.7	90.9	94.1		92.9	*	94.7	74.5	19
	2014	*		*	*	*	*	*		*	*	*	75.0	5
6-8	2012		*	60.0	65.8	66.7	58.3	64.7		60.6	88.9	66.7	60.3	42
	2013	*	*	63.9	63.4	61.4	54.5	57.9		59.4	66.7	61.4	63.6	44
	2014	*	*	40.9	52.2	48.1	35.3	48.0		45.5	*	48.1	60.0	27

NUMBER TESTED IN GRADES 6-8													
2012		4	35	38	42	24	34		33	9	42	1,571	
2013	1	5	36	41	44	22	38		32	12	44	1,687	
2014	2	2	22	23	27	17	25		22	5	27	1,689	

NUMBER UNSATISFACTORY (Level 1)

Grade	Year	White	African Amer	Hispanic	Econ Disadv	Special Educ	LEP	At Risk	Migrant	Male	Female	All	District	Number Tested (All Students)
6	2012		*	4	4	4	4	4		3	*	4	181	11
	2013		*	7	8	9	5	8		6	*	9	270	17
	2014		*	7	5	7	6	7		6	*	7	281	12
7	2012		*	7	7	7	4	5		7	*	7	244	20
	2013	*	*	5	7	7	*	7		6	*	7	202	8
	2014	*	*	6	6	7	5	6		6	*	7	266	10
8	2012		*	3	2	3	2	3		3	*	3	199	11
	2013		*	1	0	1	1	1		1	*	1	142	19
	2014	*		*	*	*	*	*		*	*	*	128	5
6-8	2012		*	14	13	14	10	12		13	1	14	624	42
	2013	*	*	13	15	17	10	16		13	4	17	614	44
	2014	*	*	13	11	14	11	13		12	*	14	675	27

NUMBER TESTED IN GRADES 6-8													
2012		4	35	38	42	24	34		33	9	42	1,571	
2013	1	5	36	41	44	22	38		32	12	44	1,687	
2014	2	2	22	23	27	17	25		22	5	27	1,689	

PERCENTAGE ADVANCED (Level 3)

Grade	Year	White	African Amer	Hispanic	Econ Disadv	Special Educ	LEP	At Risk	Migrant	Male	Female	All	District	Number Tested (All Students)
6	2012		*	10.0	9.1	9.1	12.5	9.1		12.5	*	9.1	3.6	11
	2013		*	7.1	12.5	11.8	0.0	15.4		8.3	*	11.8	3.1	17
	2014		*	0.0	0.0	0.0	0.0	0.0		0.0	*	0.0	2.9	12
7	2012		*	0.0	0.0	0.0	0.0	0.0		0.0	*	0.0	1.0	20
	2013	*	*	0.0	0.0	0.0	*	0.0		0.0	*	0.0	3.5	8
	2014	*	*	0.0	0.0	0.0	0.0	0.0		0.0	*	0.0	3.9	10
8	2012		*	0.0	0.0	0.0	0.0	0.0		0.0	*	0.0	1.1	11
	2013		*	0.0	0.0	0.0	0.0	0.0		0.0	*	0.0	2.5	19
	2014	*		*	*	*	*	*		*	*	*	2.9	5
6-8	2012		*	2.9	2.6	2.4	4.2	2.9		3.0	0.0	2.4	1.9	42
	2013	*	*	2.8	4.9	4.5	0.0	5.3		3.1	8.3	4.5	3.0	44
	2014	*	*	0.0	0.0	0.0	0.0	0.0		0.0	*	0.0	3.3	27

NUMBER TESTED IN GRADE 6-8													
2012		4	35	38	42	24	34		33	9	42	1,571	
2013	1	5	36	41	44	22	38		32	12	44	1,687	
2014	2	2	22	23	27	17	25		22	5	27	1,689	

AVERAGE PERCENTAGE OF ITEMS CORRECT BY REPORTING CATEGORY

Grade	Year	REPORTING CATEGORY		
		1. Understanding Across Genres (GR 3-5) 1. Understanding/Analysis Across Genres (GR 6-8)	2. Understanding/Analysis of Literary Texts	3. Understanding/Analysis of Informational Texts
6	2012	40.9	63.1	47.4
	2013	47.1	50.7	59.2
	2014	42.7	38.0	49.4
7	2012	63.8	54.7	45.0
	2013	40.6	39.7	35.8
	2014	41.3	38.2	43.3
8	2012	64.8	56.6	59.1
	2013	77.0	65.5	62.2
	2014	*	*	*
6-8	2012	58.0	57.4	49.3
	2013	58.8	55.1	56.3
	2014	44.9	41.3	50.0

PERCENTAGE SATISFACTORY (Levels 2 or 3)

Grade	Year	White	African Amer	Hispanic	Econ Disadv	Special Educ	LEP	At Risk	Migrant	Male	Female	All	District	Number Tested (All Students)
7	2012		*	83.3	85.7	86.4	81.8	87.5		87.5	83.3	86.4	56.7	22
	2013		*	50.0	57.1	57.1	*	57.1		*	*	57.1	63.7	7
	2014		*	55.6	66.7	60.0	50.0	50.0		57.1	*	60.0	62.9	10

NUMBER TESTED IN GRADE 7													
2012		2	18	21	22	11	16		16	6	22	586	
2013		1	6	7	7	4	7		5	2	7	509	
2014		1	9	9	10	6	8		7	3	10	599	

NUMBER UNSATISFACTORY (Level 1)

Grade	Year	White	African Amer	Hispanic	Econ Disadv	Special Educ	LEP	At Risk	Migrant	Male	Female	All	District	Number Tested (All Students)
7	2012		*	3	3	3	2	2		2	1	3	254	22
	2013		*	3	3	3	*	3		*	*	3	185	7
	2014		*	4	3	4	3	4		3	*	4	222	10

NUMBER TESTED IN GRADE 7													
2012		2	18	21	22	11	16		16	6	22	586	
2013		1	6	7	7	4	7		5	2	7	509	
2014		1	9	9	10	6	8		7	3	10	599	

PERCENTAGE ADVANCED (Level 3)

Grade	Year	White	African Amer	Hispanic	Econ Disadv	Special Educ	LEP	At Risk	Migrant	Male	Female	All	District	Number Tested (All Students)
7	2012		*	5.6	4.8	4.5	0.0	0.0		6.3	0.0	4.5	2.7	22
	2013		*	0.0	0.0	0.0	*	0.0		*	*	0.0	6.3	7
	2014		*	11.1	11.1	10.0	0.0	0.0		14.3	*	10.0	6.3	10

NUMBER TESTED IN GRADE 7													
2012		2	18	21	22	11	16		16	6	22	586	
2013		1	6	7	7	4	7		5	2	7	509	
2014		1	9	9	10	6	8		7	3	10	599	

AVERAGE PERCENTAGE OF ITEMS CORRECT BY REPORTING CATEGORY

Grade	Year	REPORTING CATEGORY		
		1. Composition ¹ GR 4: Personal Narrative GR 7: Expository	2. Revision	3. Editing
7	2012	1.0	52.4	58.1
	2013	2.4	48.4	51.9
	2014	2.7	49.2	44.2

¹Average score points (range 0-6). A STAAR M composition is rated twice on a scale of 0 to 3, and the ratings are summed to determine score points for the composition. Score point scale: 0=Non-scorable; 2=Very Limited; 3=between Very Limited and Basic; 4=Basic; 5=between Basic and Satisfactory; 6=Satisfactory

PERCENTAGE SATISFACTORY (Levels 2 or 3)

Grade	Year	White	African Amer	Hispanic	Econ Disadv	Special Educ	LEP	At Risk	Migrant	Male	Female	All	District	Number Tested (All Students)
6	2012		*	30.0	36.4	36.4	37.5	36.4		25.0	*	36.4	46.2	11
	2013		*	66.7	71.4	66.7	62.5	64.3		54.5	*	66.7	54.3	15
	2014		*	14.3	16.7	12.5	16.7	12.5		14.3	*	12.5	52.0	8
7	2012		*	93.8	88.9	89.5	100.0	92.3		92.3	83.3	89.5	50.5	19
	2013	*		16.7	14.3	14.3	*	14.3		*	*	14.3	49.4	7
	2014	*	*	0.0	12.5	11.1	0.0	12.5		14.3	*	11.1	48.8	9
8	2012		*	70.0	75.0	66.7	75.0	70.0		63.6	*	66.7	46.2	12
	2013		*	76.9	80.0	81.3	77.8	78.6		75.0	*	81.3	71.4	16
	2014	*		*	*	*	*	*		*	*	*	71.0	5
6-8	2012		*	69.4	70.3	69.0	72.0	67.6		65.6	80.0	69.0	47.7	42
	2013	*	*	61.3	63.9	63.2	54.5	60.0		57.1	80.0	63.2	58.5	38
	2014	*	*	22.2	27.8	27.3	21.4	28.6		23.5	*	27.3	56.7	22

NUMBER TESTED IN GRADES 6-8													
2012		4	36	37	42	25	34		32	10	42	1,554	
2013	1	4	31	36	38	22	35		28	10	38	1,659	
2014	2	2	18	18	22	14	21		17	5	22	1,684	

NUMBER UNSATISFACTORY (Level 1)

Grade	Year	White	African Amer	Hispanic	Econ Disadv	Special Educ	LEP	At Risk	Migrant	Male	Female	All	District	Number Tested (All Students)
6	2012		*	7	7	7	5	7		6	*	7	276	11
	2013		*	4	4	5	3	5		5	*	5	272	15
	2014		*	6	5	7	5	7		6	*	7	271	8
7	2012		*	1	2	2	0	1		1	1	2	276	19
	2013	*		5	6	6	*	6		*	*	6	257	7
	2014	*	*	7	7	8	6	7		6	*	8	310	9
8	2012		*	3	2	4	2	3		4	*	4	260	12
	2013		*	3	3	3	2	3		3	*	3	159	16
	2014	*		*	*	*	*	*		*	*	*	149	5
6-8	2012		*	11	11	13	7	11		11	2	13	812	42
	2013	*	*	12	13	14	10	14		12	2	14	688	38
	2014	*	*	14	13	16	11	15		13	*	16	730	22

NUMBER TESTED IN GRADES 6-8													
2012		4	36	37	42	25	34		32	10	42	1,554	
2013	1	4	31	36	38	22	35		28	10	38	1,659	
2014	2	2	18	18	22	14	21		17	5	22	1,684	

PERCENTAGE ADVANCED (Level 3)

Grade	Year	White	African Amer	Hispanic	Econ Disadv	Special Educ	LEP	At Risk	Migrant	Male	Female	All	District	Number Tested (All Students)
6	2012		*	10.0	9.1	9.1	12.5	9.1		12.5	*	9.1	5.5	11
	2013		*	0.0	7.1	6.7	0.0	7.1		9.1	*	6.7	4.9	15
	2014		*	0.0	0.0	0.0	0.0	0.0		0.0	*	0.0	3.4	8
7	2012		*	6.3	5.6	5.3	0.0	0.0		7.7	0.0	5.3	1.1	19
	2013	*		0.0	0.0	0.0	*	0.0		*	*	0.0	3.0	7
	2014	*	*	0.0	0.0	0.0	0.0	0.0		0.0	*	0.0	2.3	9
8	2012		*	0.0	12.5	8.3	0.0	0.0		9.1	*	8.3	1.2	12
	2013		*	0.0	0.0	0.0	0.0	0.0		0.0	*	0.0	2.2	16
	2014	*		*	*	*	*	*		*	*	*	1.9	5
6-8	2012		*	5.6	8.1	7.1	4.0	2.9		9.4	0.0	7.1	2.6	42
	2013	*	*	0.0	2.8	2.6	0.0	2.9		3.6	0.0	2.6	3.4	38
	2014	*	*	0.0	0.0	0.0	0.0	0.0		0.0	*	0.0	2.6	22

NUMBER TESTED IN GRADE 6-8													
2012		4	36	37	42	25	34		32	10	42	1,554	
2013	1	4	31	36	38	22	35		28	10	38	1,659	
2014	2	2	18	18	22	14	21		17	5	22	1,684	

AVERAGE PERCENTAGE OF ITEMS CORRECT BY REPORTING CATEGORY

Grade	Year	REPORTING CATEGORY				
		1. Numbers, Operations, and Quantitative Reasoning	2. Patterns, Relationships, and Algebraic Reasoning	3. Geometry and Spatial Reasoning	4. Measurement	5. Probability and Statistics
6	2012	48.1	42.7	51.5	37.9	34.8
	2013	46.7	48.7	63.3	40.0	50.0
	2014	28.6	36.3	41.7	33.3	35.4
7	2012	47.8	48.4	51.3	36.8	53.9
	2013	35.1	48.6	48.2	21.4	28.6
	2014	39.4	34.4	36.1	25.9	44.4
8	2012	50.0	56.8	55.6	45.0	44.8
	2013	41.9	51.1	44.8	45.0	53.1
	2014	*	*	*	*	*
6-8	2012	48.5	49.3	52.6	39.4	46.3
	2013	42.5	49.7	52.7	38.7	47.4
	2014	34.2	38.8	39.0	33.2	43.0

PERCENTAGE DEMONSTRATING IMPROVEMENT


Grade	Level 1 in 2013		Level 2 in 2013		Level 3 in 2013		Levels 1-3 in 2013	
	Number Tested Both Years	Percentage Improved in 2014	Number Tested Both Years	Percentage Improved in 2014	Number Tested Both Years	Percentage Improved in 2014	Number Tested Both Years	Percentage Improved in 2014
6	7	42.9	20	50.0	0		27	48.1
7	6	33.3	16	37.5	0		22	36.4
8	9	11.1	11	27.3	0		20	20.0
ALL	22	27.3	47	40.4	0		69	36.2

PERFORMANCE IN 2014

Grade 2013-14 (N Rated)	Domain:	Listening		Speaking		Writing		Reading		Composite	
	2014 Level	N	%	N	%	N	%	N	%	N	%
6 (248)	Beginning	2	0.9	4	1.7	13	5.7	31	12.7	7	3.1
	Intermediate	22	9.6	36	15.7	68	29.6	86	35.1	53	23.3
	Advanced	93	40.4	95	41.3	68	29.6	93	38.0	100	44.1
	Advanced High	113	49.1	95	41.3	81	35.2	35	14.3	67	29.5
7 (184)	Beginning	2	1.6	2	1.6	4	3.2	29	15.8	2	1.6
	Intermediate	17	13.7	17	13.7	38	30.6	74	40.2	36	29.0
	Advanced	53	42.7	52	41.9	64	51.6	67	36.4	70	56.5
	Advanced High	52	41.9	53	42.7	18	14.5	14	7.6	16	12.9
8 (174)	Beginning	2	1.2	2	1.2	3	1.9	21	12.2	2	1.3
	Intermediate	6	3.7	6	3.7	15	9.3	44	25.6	16	10.0
	Advanced	9	5.6	10	6.2	51	31.5	70	40.7	68	42.5
	Advanced High	145	89.5	144	88.9	93	57.4	37	21.5	74	46.3
ALL (606)	Beginning	6	1.2	8	1.6	20	3.9	81	13.5	11	2.2
	Intermediate	45	8.7	59	11.4	121	23.4	204	33.9	105	20.5
	Advanced	155	30.0	157	30.4	183	35.5	230	38.3	238	46.6
	Advanced High	310	60.1	292	56.6	192	37.2	86	14.3	157	30.7

**PROGRESSION FROM
2013 TO 2014**

Number Rated Both Years N (%) Progressed	2014 Level	2013 Level			
		Beg	Int	Adv	Adv High
219 77 (35.2%)	Beginning	6			
	Intermediate	5	45		
	Advanced	1	5	91	
	Advanced High	0	0	66	
110 26 (23.6%)	Beginning	0			
	Intermediate	2	25		
	Advanced	0	8	59	
	Advanced High	0	0	16	
145 79 (54.5%)	Beginning	0			
	Intermediate	1	11		
	Advanced	0	6	55	
	Advanced High	0	0	72	
474 182 (38.4%)	Beginning	6			
	Intermediate	8	81		
	Advanced	1	19	205	
	Advanced High	0	0	154	

 Indicates students who progressed at least one level from 2013 to 2014.

SEMESTER 1 TESTS

Number Tested	Averages				% Passing		District % Passing	
	% Items Correct	Scale Score	Course Mark	Course Mark (no ACP)	ACP	Course	ACP	Course

SPANISH I

21	52.1	68.1	86.0	88.0	28.6	90.5	71.3	91.2
----	------	------	------	------	------	------	------	------

SPANISH II

--	--	--	--	--	--	--	--	--

ALGEBRA I PRE-AP

78	55.4	70.3	79.0	79.9	53.8	94.9	65.2	96.3
----	------	------	------	------	------	------	------	------

ART 7

78	64.7	76.5	91.0	92.6	78.2	100.0	76.4	97.8
----	------	------	------	------	------	-------	------	------

INTERMEDIATE LANGUAGE ARTS 7 FOR ESL

3	*	*	*	*	*	*	59.0	*
---	---	---	---	---	---	---	------	---

INTERMEDIATE LANGUAGE ARTS 8 FOR ESL

2	*	*	*	*	*	*	40.0	*
---	---	---	---	---	---	---	------	---

LANGUAGE ARTS 6

279	49.7	69.8	76.3	77.0	53.8	87.1	51.1	88.5
-----	------	------	------	------	------	------	------	------

LANGUAGE ARTS 6 PRE-AP

101	66.9	75.2	81.7	82.4	77.2	99.0	79.1	98.0
-----	------	------	------	------	------	------	------	------

LANGUAGE ARTS 7

237	41.1	68.4	78.2	79.3	45.1	83.5	52.3	86.0
-----	------	------	------	------	------	------	------	------

LANGUAGE ARTS 7 PRE-AP

144	57.5	71.7	86.7	88.3	59.7	100.0	72.1	96.8
-----	------	------	------	------	------	-------	------	------

LANGUAGE ARTS 8

208	53.3	69.5	75.2	75.8	53.4	76.2	56.7	87.7
-----	------	------	------	------	------	------	------	------

SEMESTER 2 TESTS

Number Tested	Averages				% Passing		District % Passing	
	% Items Correct	Scale Score	Course Mark	Course Mark (no ACP)	ACP	Course	ACP	Course

SPANISH I

18	58.2	72.1	81.3	82.3	50.0	88.9	72.9	84.3
----	------	------	------	------	------	------	------	------

SPANISH II

14	43.3	62.2	83.0	86.7	7.1	100.0	76.5	89.2
----	------	------	------	------	-----	-------	------	------

ALGEBRA I PRE-AP

--	--	--	--	--	--	--	--	--

ART 7

--	--	--	--	--	--	--	--	--

INTERMEDIATE LANGUAGE ARTS 7 FOR ESL

3	*	*	*	*	*	*	62.9	*
---	---	---	---	---	---	---	------	---

INTERMEDIATE LANGUAGE ARTS 8 FOR ESL

2	*	*	*	*	*	*	61.5	*
---	---	---	---	---	---	---	------	---

LANGUAGE ARTS 6

270	50.6	69.8	74.7	75.3	54.1	81.9	56.8	85.3
-----	------	------	------	------	------	------	------	------

LANGUAGE ARTS 6 PRE-AP

98	56.2	72.1	82.8	84.0	70.4	99.0	64.3	96.1
----	------	------	------	------	------	------	------	------

LANGUAGE ARTS 7

227	54.2	68.8	75.9	76.7	48.9	83.3	59.3	82.9
-----	------	------	------	------	------	------	------	------

LANGUAGE ARTS 7 PRE-AP

151	64.5	72.0	83.6	84.9	65.6	94.7	79.1	96.0
-----	------	------	------	------	------	------	------	------

LANGUAGE ARTS 8

194	59.9	72.0	79.7	80.6	63.4	86.6	72.6	85.9
-----	------	------	------	------	------	------	------	------

SEMESTER 1 TESTS

Number Tested	Averages				% Passing		District % Passing	
	% Items Correct	Scale Score	Course Mark	Course Mark (no ACP)	ACP	Course	ACP	Course

LANGUAGE ARTS 8 PRE-AP

122	64.1	73.8	85.5	86.8	68.0	97.5	76.4	97.3
-----	------	------	------	------	------	------	------	------

MATHEMATICS 6

270	33.5	69.3	75.9	76.6	45.9	83.3	45.6	86.2
-----	------	------	------	------	------	------	------	------

MATHEMATICS 6 PRE-AP

114	49.3	71.8	86.3	87.9	64.9	99.1	65.8	97.0
-----	------	------	------	------	------	------	------	------

MATHEMATICS 7

241	33.2	67.7	75.8	76.7	36.1	80.5	49.3	84.8
-----	------	------	------	------	------	------	------	------

MATHEMATICS 7 PRE-AP

149	61.7	68.9	84.7	86.5	53.0	98.0	64.9	96.0
-----	------	------	------	------	------	------	------	------

MATHEMATICS 8

285	50.9	68.7	76.2	77.0	48.4	85.2	51.9	84.5
-----	------	------	------	------	------	------	------	------

MS BAND: LISTENING AND MUSIC ELEMENTS

38	87.1	99.3	100.7	94.7	100.0	63.8	98.2
----	------	------	-------	------	-------	------	------

PHYSICAL EDUCATION 6

152	72.7	93.3	95.6	58.6	99.3	74.0	99.1
-----	------	------	------	------	------	------	------

PHYSICAL EDUCATION 7 & 8

235	79.3	90.3	91.5	82.6	97.4	83.6	98.3
-----	------	------	------	------	------	------	------

READING 6

379	59.1	70.8	77.6	78.3	59.6	84.4	56.3	90.6
-----	------	------	------	------	------	------	------	------

READING 7

328	50.6	70.4	79.1	80.0	56.4	88.1	57.9	89.8
-----	------	------	------	------	------	------	------	------

SEMESTER 2 TESTS

Number Tested	Averages				% Passing		District % Passing	
	% Items Correct	Scale Score	Course Mark	Course Mark (no ACP)	ACP	Course	ACP	Course

LANGUAGE ARTS 8 PRE-AP

147	57.6	71.8	87.3	89.0	66.0	100.0	75.8	96.8
-----	------	------	------	------	------	-------	------	------

MATHEMATICS 6

260	37.4	68.2	75.0	75.7	40.8	81.2	42.2	81.1
-----	------	------	------	------	------	------	------	------

MATHEMATICS 6 PRE-AP

116	58.8	71.9	83.7	85.0	65.5	95.7	72.1	95.6
-----	------	------	------	------	------	------	------	------

MATHEMATICS 7

240	43.7	68.7	73.9	74.4	42.5	74.2	50.1	79.6
-----	------	------	------	------	------	------	------	------

MATHEMATICS 7 PRE-AP

148	62.8	72.8	83.3	84.4	63.5	92.6	70.9	96.1
-----	------	------	------	------	------	------	------	------

MATHEMATICS 8

282	47.2	68.3	75.6	76.5	42.2	83.0	51.9	85.4
-----	------	------	------	------	------	------	------	------

MS BAND: LISTENING AND MUSIC ELEMENTS

38	90.3	99.5	100.5	100.0	100.0	85.6	96.7
----	------	------	-------	-------	-------	------	------

PHYSICAL EDUCATION 6

113	75.3	93.7	95.8	72.6	99.1	82.8	99.0
-----	------	------	------	------	------	------	------

PHYSICAL EDUCATION 7 & 8

203	84.8	88.3	88.6	92.6	99.0	88.6	97.2
-----	------	------	------	------	------	------	------

READING 6

368	51.0	70.0	74.9	75.4	55.7	70.4	55.7	86.3
-----	------	------	------	------	------	------	------	------

READING 7

339	60.8	72.6	77.1	77.6	61.7	77.9	65.6	85.6
-----	------	------	------	------	------	------	------	------

SEMESTER 1 TESTS

Number Tested	Averages				% Passing		District % Passing	
	% Items Correct	Scale Score	Course Mark	Course Mark (no ACP)	ACP	Course	ACP	Course

READING 8

299	64.4	71.9	81.3	82.3	62.9	90.3	63.6	88.7
-----	------	------	------	------	------	------	------	------

READING MASTERY 7

43	48.8	69.3	76.3	77.1	51.2	88.4	50.3	84.6
----	------	------	------	------	------	------	------	------

READING MASTERY 8

50	52.5	69.0	72.1	72.4	56.0	60.0	63.1	85.0
----	------	------	------	------	------	------	------	------

SCIENCE 6

385	61.2	76.7	77.2	77.3	77.1	81.6	59.9	91.6
-----	------	------	------	------	------	------	------	------

SCIENCE 7

264	53.2	71.3	80.9	81.9	58.0	89.4	51.0	85.7
-----	------	------	------	------	------	------	------	------

SCIENCE 7 PRE-AP

128	68.5	77.5	89.5	90.9	81.3	100.0	75.2	97.8
-----	------	------	------	------	------	-------	------	------

SCIENCE 8 & SCIENCE 8 PRE-AP

363	62.6	75.0	83.2	84.1	74.9	91.2	64.6	90.4
-----	------	------	------	------	------	------	------	------

SOCIAL STUDIES 6

385	50.7	69.2	81.8	83.2	49.9	96.1	42.8	90.4
-----	------	------	------	------	------	------	------	------

TECHNOLOGY APPLICATIONS

124	61.8	77.1	84.9	85.8	73.4	96.0	60.4	93.7
-----	------	------	------	------	------	------	------	------

TEXAS STUDIES 7

285	50.2	72.3	79.0	79.8	56.1	87.3	49.3	87.3
-----	------	------	------	------	------	------	------	------

TEXAS STUDIES 7 PRE-AP

109	74.3	80.7	88.9	89.8	85.3	100.0	68.1	97.3
-----	------	------	------	------	------	-------	------	------

SEMESTER 2 TESTS

Number Tested	Averages				% Passing		District % Passing	
	% Items Correct	Scale Score	Course Mark	Course Mark (no ACP)	ACP	Course	ACP	Course

READING 8

299	66.5	74.9	79.8	80.3	72.9	89.6	74.8	87.8
-----	------	------	------	------	------	------	------	------

READING MASTERY 7

19	49.1	68.8	73.0	73.5	57.9	78.9	59.4	81.4
----	------	------	------	------	------	------	------	------

READING MASTERY 8

43	59.5	73.0	74.2	74.3	67.4	67.4	71.7	85.4
----	------	------	------	------	------	------	------	------

SCIENCE 6

375	60.6	74.8	80.5	81.1	68.5	88.5	57.7	87.5
-----	------	------	------	------	------	------	------	------

SCIENCE 7

260	62.7	77.2	80.5	80.8	77.7	91.2	71.7	85.1
-----	------	------	------	------	------	------	------	------

SCIENCE 7 PRE-AP

129	75.0	80.8	88.2	89.1	90.7	98.4	81.2	96.9
-----	------	------	------	------	------	------	------	------

SCIENCE 8 & SCIENCE 8 PRE-AP

355	60.2	72.2	82.2	83.3	66.2	93.2	64.5	88.8
-----	------	------	------	------	------	------	------	------

SOCIAL STUDIES 6

374	57.9	71.9	82.2	83.4	59.9	90.1	56.1	86.5
-----	------	------	------	------	------	------	------	------

TECHNOLOGY APPLICATIONS

128	72.9	83.4	85.5	85.8	84.4	97.7	65.5	89.7
-----	------	------	------	------	------	------	------	------

TEXAS STUDIES 7

272	59.0	78.0	79.6	79.8	80.9	88.6	59.9	84.9
-----	------	------	------	------	------	------	------	------

TEXAS STUDIES 7 PRE-AP

115	77.2	84.1	88.5	89.0	95.7	100.0	79.0	95.9
-----	------	------	------	------	------	-------	------	------

SEMESTER 1 TESTS

Number Tested	Averages				% Passing		District % Passing	
	% Items Correct	Scale Score	Course Mark	Course Mark (no ACP)	ACP	Course	ACP	Course

U.S. STUDIES 8

167	45.2	68.4	76.4	77.3	41.9	77.8	50.5	85.9
-----	------	------	------	------	------	------	------	------

U.S. STUDIES 8 PRE-AP

194	63.7	72.8	86.5	88.0	61.3	98.5	70.3	97.8
-----	------	------	------	------	------	------	------	------

SEMESTER 2 TESTS

Number Tested	Averages				% Passing		District % Passing	
	% Items Correct	Scale Score	Course Mark	Course Mark (no ACP)	ACP	Course	ACP	Course

U.S. STUDIES 8

154	47.8	65.2	70.4	71.0	30.5	59.1	54.3	84.4
-----	------	------	------	------	------	------	------	------

U.S. STUDIES 8 PRE-AP

201	66.5	70.5	81.3	82.5	56.2	88.6	69.5	95.0
-----	------	------	------	------	------	------	------	------