

# DATA PACKET

for 2014-15 planning

Evaluation & Assessment  
Office of Institutional Research

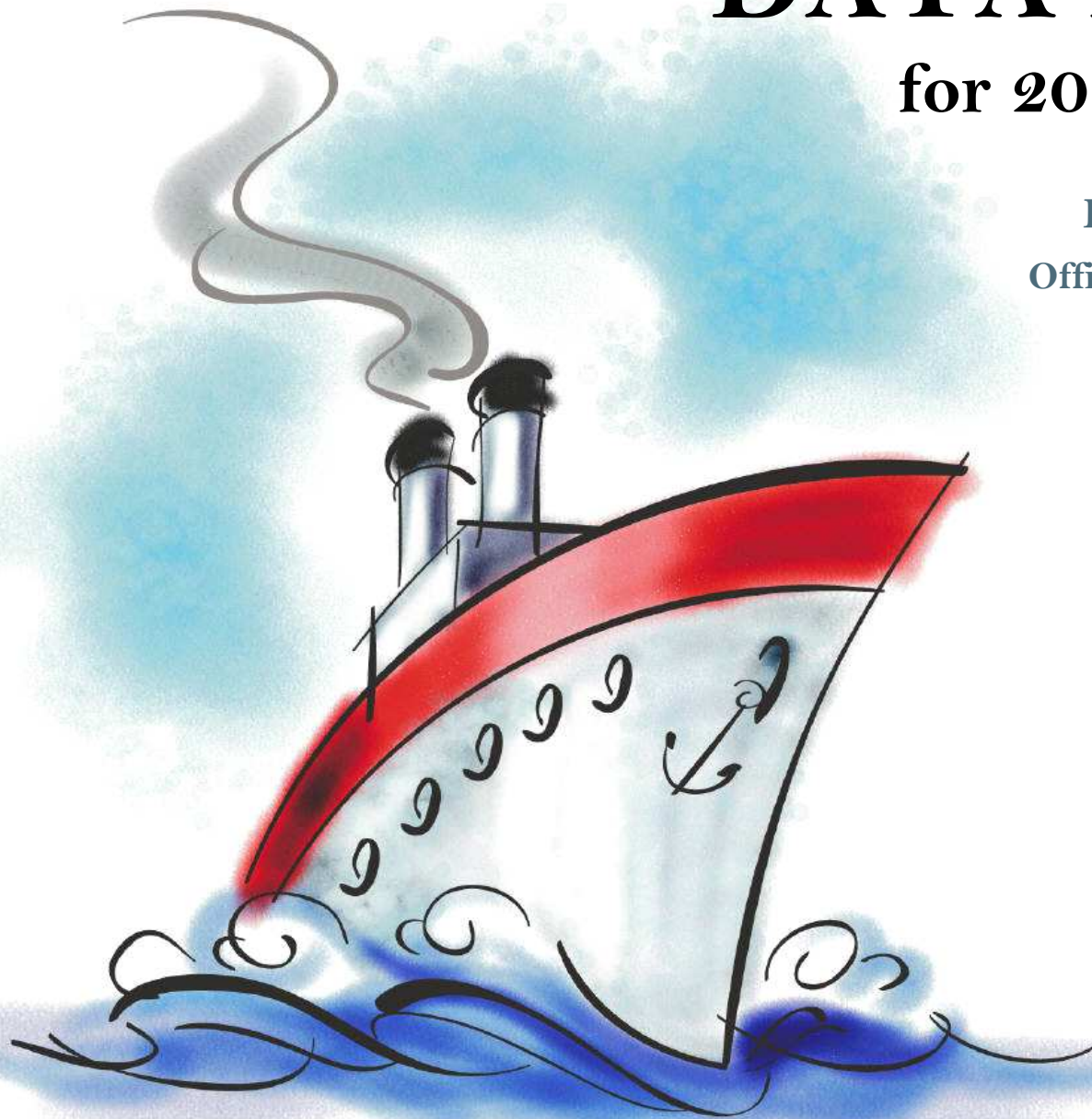
<http://mydata.dallasisd.org>

[OIR@dallasisd.org](mailto:OIR@dallasisd.org)

September 5, 2014

School Number 6

**HILLCREST  
HIGH SCHOOL**



Dallas Independent School District

2. Contents ..... Table of Contents

**STUDENTS AND STAFF**

- 6. Summary ..... Summary of Student and Teacher Statistics
- 8. Enroll (2) ..... Enrollment Statistics by Select Student Group
- 10. Teachers ..... Teacher Statistics

**STAAR (English)**

- 11. Reading (EOC) .. STAAR EOC Reading
- 19. Science (EOC) ... STAAR EOC Science

**STAAR L**

- 27. Math (EOC) ..... STAAR L EOC Mathematics

**STAAR M**

- 31. Reading (EOC) .. STAAR M EOC Reading
- 39. SS (EOC) ..... STAAR M EOC Social Studies

**ENGLISH PROFICIENCY**

- 43. WMLS ..... Woodcock-Muñoz Language Survey

**COLLEGE READINESS**

- 45. SAT/ACT ..... SAT/ACT Average Scores for Seniors
- 47. AP ..... Advanced Placement (AP) Exams

**LOCAL ASSESSMENT**

- 48. ACP ..... Assessments of Course Performance

3. Notes ..... Notes and Data Descriptions

- 7. Enroll (1) ..... Enrollment Statistics by Ethnicity
- 9. Attendance ..... Student Attendance Statistics

- 15. Math (EOC) ..... STAAR EOC Mathematics
- 23. SS (EOC) ..... STAAR EOC Social Studies

35. Math (EOC) ..... STAAR M EOC Mathematics

44. TELPAS ..... Texas English Language Proficiency Assessment System

46. PSAT ..... PSAT Average Scores

## **2013-14 SCHOOL SUMMARY**

- Student percentages are computed as the percentage of total student enrollment.
- Additional statistics are available in ENROLLMENT and TEACHER reports.
- Race/ethnic categories are based on the newest federal standards for ethnicity and race reporting, though some categories have been combined because of small group sizes. Students reporting their ethnicity as “Hispanic” are not counted in any race category.
- “Economically disadvantaged” students are those who qualify for free or reduced-price lunch through the federal government's program.
- Teacher demographics and assignments are from the district's Public Education Information Management System (PEIMS) submission to the TEA.

## **ENROLLMENT**

- Statistics are based on the school's enrollment at the end of the fifth six-weeks grading period.
- “Economically disadvantaged” students are those receiving free or reduced-price lunches.
- “New” students were new to the district in 2013-14. They are counted as new if not enrolled in a district campus before the last day of the 2012-13 school year.
- The “retention rate” is the percentage of students in the same grade at the end of the fifth six-weeks grading period for both 2012-13 and 2013-14.

## **ATTENDANCE**

- Statistics are based on student attendance through the end of the sixth six-weeks grading period (the end of the school year).
- “Average daily membership” is the total number of school days students were ENROLLED divided by the number of school days in the year.
- The “average daily attendance” number (N) is the total number of school days students were IN ATTENDANCE divided by the number of school days in the year. The “average daily attendance” percentage (%) is the average attendance rate. For each student, the number of days attended is divided by the number of days enrolled. This rate is then averaged across students.
- The number (N) of “yearly transactions” is the total number of transfer and withdrawal transactions in the school year. The percentage (%) is the number of transactions divided by “average daily membership,” which gives (on average) the percentage of the membership associated with a transaction.
- “Continuously enrolled” students are enrolled and in attendance for a minimum number of instructional days in at least one course at the school between the beginning of the school year and the first day of the main STAAR testing period. The minimum number varies depending on the school year's calendar, but is typically around 130 days.
- The “stability rate” is the number of continuously enrolled students divided by “average daily membership.”

## **TEACHERS**

- Teacher demographics and assignments are from the district's Public Education Information Management System (PEIMS) submission to the TEA.
- Teacher absences counted towards the average DO NOT include vacation days (coded as VAC in personnel database).
- Retention rate for a school year is computed with numerator “# of teachers assigned to the school both that year and the year prior” and denominator “# of teachers assigned to the school for the prior year.” That is, the retention rate is the percentage of the prior year's teachers who continued at the school.

**STAAR, STAAR L, and STAAR M**

- Cells marked with an asterisk (\*) indicate five or fewer students were tested. Blank cells indicate no students were tested.
- Student group assignments are from the district's Public Education Information Management System (PEIMS) submission to the TEA.
- STAAR statistics are based on results from standard STAAR only. STAAR L and STAAR M statistics are computed separately, following TEA reporting practice.
- “Percentage Satisfactory” is the percentage of students achieving Level 2 (Satisfactory) or Level 3 (Advanced).
- Statistics by reporting category are averages for all students (across student groups and genders).
- An “average percentage correct” is computed as follows: for each student, divide the number of items correctly answered by the total number of items in the test section, then average the resulting percentages across all students. For short answers on EOC English tests, an “average rating” is presented; STAAR EOC short answers are rated on a scale of 0 to 3. For written compositions on writing tests, “average score points” is presented. Additional details provided in report footnotes.
- EOC statistics are based on first administration scores from the fall and spring administrations.
- Beginning in 2014, EOC Reading and EOC Writing tests were replaced with EOC English tests.

**TELPAS**

- Students are counted as having tested if any one of the four domains is rated. Because a TELPAS composite rating is not assigned to a student unless all four domains are rated, the number of TELPAS composite ratings may be smaller than the number tested.
- If a student's composite rating did not increase at least one level from 2013 to 2014, the TEA did not report the 2013 composite rating.
- If a student is rated as advanced high in 2014, the TEA does not differentiate between the advanced and advanced high levels from 2013.

## **COLLEGE READINESS**

- Cells marked with an asterisk (\*) indicate five or fewer students were tested. Blank cells indicate no students were tested.
- For SAT and ACT, “Percent Tested” is computed with “Number Tested” as numerator and, as denominator, Grade 12 “Enrollment” as reported in Enrollment (1) and Enrollment (2) reports. For PSAT, the denominator for “Percent Tested” is grade-level enrollment as reported in Enrollment reports.
- Score summaries for SAT and ACT contain all scores available for the school year at the time of publication.
- The SAT and ACT are administered throughout the school year by The College Board and ACT, Inc. A student takes the SAT or ACT at the time and location of her choice, and she may take either test multiple times. If a student has results from multiple administrations, only the latest is used.
- SAT scores range from 200 to 800. ACT scores range from 0 to 36.
- SAT College and Career Readiness Benchmarks are the same for each subject (critical reading, mathematics, and writing): 500. The SAT benchmark indicates a 65 percent likelihood of achieving a B- average or higher during the first year of college. ACT's College Readiness Benchmarks are the minimum scores that indicate a 50 percent chance of earning a B or better (and 75 percent chance of earning a C or better) in the corresponding college course. The ACT benchmarks are available for four subject-area tests. They are English: 18, reading: 21, mathematics: 22, and science: 24.
- PSAT scores range from 20 to 80. PSAT is administered once each year in October. District students taking PSAT are tested at their schools. Statistics for a grade level are based on all students in that grade level in the fall with a PSAT score for that year. (Students' scores will be used in multiple statistics if they took the PSAT in multiple years.)
- PSAT/NMSQT College and Career Readiness Benchmarks are the scores associated with a 65 percent likelihood of achieving a B- first-year college GPA. The College Board has determined PSAT benchmark scores separately for grades 10 and 11 in each subject. For grade 10, the benchmarks are critical reading: 42, mathematics: 44, writing: 42. For grade 11, the benchmarks are critical reading: 45, mathematics: 47, writing: 45. There are no benchmarks for grade 9.
- AP scores range from 1 to 5; a minimum of 3 is needed to pass.

## **ACP**

- Cells marked with an asterisk (\*) indicate five or fewer students were tested. Blank cells indicate no students were tested.
- The ACPs are semester exams administered in grades K-12. Not all courses have ACPs. In MIDDLE and HIGH school, ACP results account for a portion of students' final semester grades (10% and 15% respectively). “Average course mark (no ACP)” is computed from semester grades before factoring in ACP scores. In ELEMENTARY school, ACP results account for 5% of students' semester grades for core courses; course-grade statistics are not reported in data packets for elementary grades.
- Raw scores on the ACPs (percentage of items correct) are scaled each year to maintain similar annual passing rates for the district.
- A scale score of at least 70 percent is required to pass an ACP. A course mark of at least 70 percent is required to pass a course.
- Statistics are computed separately for Semester 1 and Semester 2 tests; time of administration during the school year is not relevant. Results from tests written for different school years are not combined.

**STUDENT ENROLLMENT**

Grade	Enrollment
9	361
10	297
11	298
12	234
ALL	1,190

**STUDENT AND TEACHER RACE/ETHNICITY**

Ethnicity/Race	Students		Teachers	
	Number	Percent	Number	Percent
Black/African American	223	18.7	19	23.8
American Indian/Alaska Native	3	0.3	*	*
Asian/Hawaiian/Pacific Islander	24	2.0	*	*
Hispanic	790	66.4	10	12.5
White	143	12.0	46	57.5
Multiple	4	0.3	0	0.0
Other* (teachers only)	—	—	5	6.3
Not reported (students only)	0	0.0	—	—

\*For teachers, "Other" category includes American Indian/Alaska Native and Asian/Hawaiian/Pacific Islander.

**SELECT STUDENT GROUP ENROLLMENT**

Group	Number	Percent
At-Risk	884	74.3
Economically disadvantaged	873	73.4
Limited English proficient (LEP)	275	23.1
Special education	110	9.2
Talented and Gifted (TAG)	127	10.7

Grade	Year	Enrollment	African American		American Indian		Asian		Hispanic		White		Multiple category	
			N	%	N	%	N	%	N	%	N	%	N	%
9	2012	390	80	20.5	3	0.8	12	3.1	240	61.5	55	14.1	0	0.0
	2013	362	66	18.2	0	0.0	6	1.7	254	70.2	33	9.1	3	0.8
	2014	361	61	16.9	0	0.0	5	1.4	263	72.9	29	8.0	2	0.6
10	2012	239	45	18.8	1	0.4	8	3.3	148	61.9	37	15.5	0	0.0
	2013	317	63	19.9	1	0.3	7	2.2	195	61.5	50	15.8	1	0.3
	2014	297	55	18.5	0	0.0	7	2.4	205	69.0	28	9.4	2	0.7
11	2012	273	68	24.9	2	0.7	6	2.2	153	56.0	44	16.1	0	0.0
	2013	220	46	20.9	1	0.5	8	3.6	135	61.4	28	12.7	1	0.5
	2014	298	60	20.1	3	1.0	7	2.3	176	59.1	51	17.1	0	0.0
12	2012	272	73	26.8	1	0.4	8	2.9	141	51.8	49	18.0	0	0.0
	2013	281	74	26.3	1	0.4	6	2.1	150	53.4	50	17.8	0	0.0
	2014	234	47	20.1	0	0.0	5	2.1	146	62.4	35	15.0	0	0.0
9-12	2012	1,174	266	22.7	7	0.6	34	2.9	682	58.1	185	15.8	0	0.0
	2013	1,180	249	21.1	3	0.3	27	2.3	734	62.2	161	13.6	5	0.4
	2014	1,190	223	18.7	3	0.3	24	2.0	790	66.4	143	12.0	4	0.3

Grade	Year	Enrollment	Economically Disadvantaged		LEP		Special Education		At Risk		TAG		New (to District)		Gender		Retention Rate (%)
			N	%	N	%	N	%	N	%	N	%	N	%	% Male	% Female	
9	2012	390	264	67.7	93	23.8	38	9.7	231	59.2	46	11.8	90	23.1	53.8	46.2	4.9
	2013	362	257	71.0	88	24.3	33	9.1	239	66.0	39	10.8	66	18.2	53.0	47.0	8.0
	2014	361	287	79.5	126	34.9	38	10.5	269	74.5	32	8.9	72	19.9	47.9	52.1	4.2
10	2012	239	163	68.2	56	23.4	26	10.9	156	65.3	23	9.6	33	13.8	48.1	51.9	1.7
	2013	317	208	65.6	48	15.1	23	7.3	200	63.1	45	14.2	22	6.9	52.4	47.6	1.6
	2014	297	221	74.4	65	21.9	25	8.4	223	75.1	33	11.1	32	10.8	52.5	47.5	1.7
11	2012	273	187	68.5	56	20.5	17	6.2	178	65.2	33	12.1	26	9.5	51.6	48.4	0.4
	2013	220	152	69.1	40	18.2	22	10.0	163	74.1	23	10.5	22	10.0	53.2	46.8	2.7
	2014	298	216	72.5	45	15.1	21	7.0	210	70.5	40	13.4	31	10.4	52.3	47.7	2.0
12	2012	272	172	63.2	62	22.8	27	9.9	196	72.1	38	14.0	13	4.8	52.9	47.1	6.6
	2013	281	187	66.5	46	16.4	21	7.5	190	67.6	29	10.3	17	6.0	53.0	47.0	4.6
	2014	234	149	63.7	39	16.7	26	11.1	182	77.8	22	9.4	12	5.1	53.0	47.0	13.7
9-12	2012	1,174	786	67.0	267	22.7	108	9.2	761	64.8	140	11.9	162	13.8	52.0	48.0	3.6
	2013	1,180	804	68.1	222	18.8	99	8.4	792	67.1	136	11.5	127	10.8	52.9	47.1	4.5
	2014	1,190	873	73.4	275	23.1	110	9.2	884	74.3	127	10.7	147	12.4	51.2	48.8	4.9



Grade	Year	Average Daily Membership		Average Daily Attendance				Yearly Transactions			Continuously Enrolled		Stability Rate	
		N	District	N	%	District N	District %	N	%	District %	N	District	%	District
9	2012	375	10,922	359	95.5	10,196	93.3	105	28.0	27.8	310	8,726	82.6	79.9
	2013	361	11,153	342	94.8	10,499	94.1	98	27.1	28.3	306	9,388	84.7	84.2
	2014	357	10,850	340	95.4	10,242	94.4	85	23.8	28.4	299	9,091	83.8	83.8
10	2012	243	9,007	231	94.9	8,431	93.6	56	23.1	20.6	200	7,332	82.3	81.4
	2013	321	9,331	307	95.6	8,812	94.4	51	15.9	20.5	287	8,042	89.3	86.2
	2014	301	9,898	287	95.2	9,367	94.6	54	17.9	20.3	257	8,628	85.3	87.2
11	2012	286	8,913	270	94.5	8,306	93.2	33	11.5	15.9	254	7,319	88.8	82.1
	2013	223	8,457	211	94.7	7,949	94.0	30	13.5	18.9	193	7,295	86.6	86.3
	2014	307	8,467	292	94.9	8,005	94.5	36	11.7	18.1	264	7,476	85.9	88.3
12	2012	258	8,178	243	94.4	7,571	92.6	27	10.5	12.6	231	6,742	89.6	82.4
	2013	273	8,199	257	94.2	7,661	93.4	22	8.1	14.9	251	7,269	92.0	88.7
	2014	222	7,886	210	94.9	7,407	93.9	22	9.9	15.2	179	7,027	80.7	89.1
9-12	2012	1,162	37,021	1,103	94.9	34,504	93.2	221	19.0	19.8	995	30,119	85.6	81.4
	2013	1,178	37,140	1,118	94.9	34,922	94.0	201	17.1	21.2	1,037	31,994	88.0	86.1
	2014	1,187	37,101	1,129	95.1	35,021	94.4	197	16.6	21.1	999	32,222	84.2	86.8

**Teachers: 80**

**DISTRIBUTIONS**

Ethnicity/Race	Number	Percentage
African American	19	23.8
Hispanic	10	12.5
White	46	57.5
Multiple	0	0.0
Other	5	6.3

Gender	Number	Percentage
Female	49	61.3
Male	31	38.8

**ATTENDANCE / RETENTION**

	Average Absences	Retention Rate
2011-12	8.4	—
2012-13	7.6	77.2
2013-14	7.4	70.7

**YEARS EXPERIENCE**

Years	Number	Percentage
Beginning (0)	6	7.5
1	7	8.8
2	5	6.3
3	4	5.0
4	5	6.3
5	3	3.8
1-3	16	20.0
More than 3	58	72.5
1 - 5	24	30.0
6 - 10	20	25.0
11 - 20	22	27.5
More than 20	8	10.0

## PERCENTAGE SATISFACTORY (Levels 2 and 3)

Test	Year	White	African Amer	Hispanic	Econ Disadv	Special Educ	LEP	At Risk	Migrant	Male	Female	All	District
ENGLISH I	2012												
	2013												
	2014	71.9	56.0	53.6	52.6	34.2	36.2	43.0	*	51.8	59.9	55.9	50.9
Tests Taken	2012												
	2013												
	2014	32	84	321	291	38	141	305	1	222	222	444	13,789
ENGLISH II	2012												
	2013												
	2014	86.2	49.2	52.5	51.4	16.7	22.2	43.1		49.2	62.9	55.5	54.8
Tests Taken	2012												
	2013												
	2014	29	65	244	220	24	81	248		187	159	346	10,943

## NUMBER UNSATISFACTORY (Level 1)

Test	Year	White	African Amer	Hispanic	Econ Disadv	Special Educ	LEP	At Risk	Migrant	Male	Female	All	District
ENGLISH I	2012												
	2013												
	2014	9	37	149	138	25	90	174	*	107	89	196	6,774
Tests Taken	2012												
	2013												
	2014	32	84	321	291	38	141	305	1	222	222	444	13,789
ENGLISH II	2012												
	2013												
	2014	4	33	116	107	20	63	141		95	59	154	4,948
Tests Taken	2012												
	2013												
	2014	29	65	244	220	24	81	248		187	159	346	10,943

## PERCENTAGE ADVANCED (Level 3)

Test	Year	White	African Amer	Hispanic	Econ Disadv	Special Educ	LEP	At Risk	Migrant	Male	Female	All	District
ENGLISH I	2012												
	2013												
	2014	15.6	1.2	0.3	0.7	0.0	0.0	0.0	*	0.5	3.6	2.0	3.2
Tests Taken	2012												
	2013												
	2014	32	84	321	291	38	141	305	1	222	222	444	13,789
ENGLISH II	2012												
	2013												
	2014	6.9	0.0	0.8	0.5	0.0	0.0	0.0		1.6	0.6	1.2	2.7
Tests Taken	2012												
	2013												
	2014	29	65	244	220	24	81	248		187	159	346	10,943

## AVERAGE PERCENTAGE OF ITEMS CORRECT BY REPORTING CATEGORY

ENGLISH I	1. Understanding & Analysis Across Genres	1. Average Rating Short Answer #1 <sup>1</sup>	1. Average Rating Short Answer #2 <sup>1</sup>	2. Understanding & Analysis of Literary Texts	3. Understanding & Analysis of Informational Texts	4. Expository Composition <sup>2</sup>	5. Revision	6. Editing
2012								
2013								
2014	63.7	1.3	1.3	56.5	61.0	4.1	66.0	52.9

ENGLISH II	1. Understanding & Analysis Across Genres	1. Average Rating Short Answer #1 <sup>1</sup>	1. Average Rating Short Answer #2 <sup>1</sup>	2. Understanding & Analysis of Literary Texts	3. Understanding & Analysis of Informational Texts	4. Persuasive Composition <sup>2</sup>	5. Revision	6. Editing
2012								
2013								
2014	73.8	1.0	1.2	51.2	62.5	4.3	63.3	66.6

<sup>1</sup>Short answer rating scale: 0=Insufficient; 1=Partially Sufficient; 2=Sufficient; 3=Exemplary

<sup>2</sup>Average score points (0-8). A composition is rated twice on a scale of 1 to 4, and the ratings are summed to determine score points for the composition. Score point scale: 0=Nonscorable; 2=Very Limited; 3=between Very Limited and Basic; 4=Basic; 5=between Basic and Satisfactory; 6=Satisfactory; 7=between Satisfactory and Accomplished; 8=Accomplished

## PERCENTAGE SATISFACTORY (Levels 2 or 3)

Test	Year	White	African Amer	Hispanic	Econ Disadv	Special Educ	LEP	At Risk	Migrant	Male	Female	All	District
<b>ALGEBRA I</b>	<b>2012</b>	94.1	79.7	75.9	75.4	21.1	62.9	66.2		76.9	79.7	78.2	74.7
	<b>2013</b>	76.5	54.5	52.7	52.1	26.3	40.4	45.6		51.7	58.8	55.2	72.5
	<b>2014</b>	75.0	73.6	63.4	68.1	25.0	55.6	53.3		65.0	67.4	66.3	78.0
Tests Taken	<b>2012</b>	17	59	166	175	19	62	136		134	118	252	8,795
	<b>2013</b>	17	44	165	163	19	52	136		116	114	230	9,251
	<b>2014</b>	16	53	191	182	24	90	169		123	141	264	9,524

## NUMBER UNSATISFACTORY (Level 1)

Test	Year	White	African Amer	Hispanic	Econ Disadv	Special Educ	LEP	At Risk	Migrant	Male	Female	All	District
<b>ALGEBRA I</b>	<b>2012</b>	1	12	40	43	15	23	48		31	24	55	2,226
	<b>2013</b>	4	20	78	78	14	31	74		56	47	103	2,540
	<b>2014</b>	4	14	70	58	18	40	79		43	46	89	2,099
Tests Taken	<b>2012</b>	17	59	166	175	19	62	136		134	118	252	8,795
	<b>2013</b>	17	44	165	163	19	52	136		116	114	230	9,251
	<b>2014</b>	16	53	191	182	24	90	169		123	141	264	9,524



## PERCENTAGE ADVANCED (Level 3)

Test	Year	White	African Amer	Hispanic	Econ Disadv	Special Educ	LEP	At Risk	Migrant	Male	Female	All	District
<b>ALGEBRA I</b>	<b>2012</b>	5.9	3.4	2.4	2.3	0.0	1.6	2.1		4.5	1.7	3.2	7.0
	<b>2013</b>	0.0	0.0	0.0	0.0	0.0	0.0	0.0		0.0	0.0	0.0	8.6
	<b>2014</b>	12.5	0.0	3.7	3.3	0.0	0.0	0.0		1.6	5.0	3.4	9.9
Tests Taken	<b>2012</b>	17	59	166	175	19	62	142		134	118	252	8,795
	<b>2013</b>	17	44	165	163	19	52	136		116	114	230	9,251
	<b>2014</b>	16	53	191	182	24	90	169		123	141	264	9,524

## AVERAGE PERCENTAGE OF ITEMS CORRECT BY REPORTING CATEGORY

ALGEBRA I	1. Functional Relationships	2. Properties and Attributes of Functions	3. Linear Functions	4. Linear Equations and Inequalities	5. Quadratic and Other Nonlinear Functions
2012	50.8	48.6	47.3	45.0	47.8
2013	39.0	36.7	37.8	45.1	43.5
2014	43.7	43.1	48.2	44.7	42.0

## PERCENTAGE SATISFACTORY (Levels 2 and 3)

Test	Year	White	African Amer	Hispanic	Econ Disadv	Special Educ	LEP	At Risk	Migrant	Male	Female	All	District
<b>BIOLOGY</b>	<b>2012</b>	95.5	90.9	79.1	81.1	37.5	59.0	70.9		82.9	85.4	84.1	82.9
	<b>2013</b>	96.7	90.4	79.6	81.3	52.9	52.3	72.3		83.8	83.8	83.8	84.4
	<b>2014</b>	100.0	92.3	87.3	87.6	70.0	73.3	81.6		87.6	91.6	89.7	89.8
Tests Taken	<b>2012</b>	44	66	201	201	16	61	151		164	157	321	8,881
	<b>2013</b>	30	52	196	192	17	44	130		148	136	284	9,374
	<b>2014</b>	25	52	205	194	20	75	152		137	154	291	9,672

## NUMBER UNSATISFACTORY (Level 1)

Test	Year	White	African Amer	Hispanic	Econ Disadv	Special Educ	LEP	At Risk	Migrant	Male	Female	All	District
<b>BIOLOGY</b>	<b>2012</b>	2	6	42	38	10	25	44		28	23	51	1,522
	<b>2013</b>	1	5	40	36	8	21	36		24	22	46	1,467
	<b>2014</b>	0	4	26	24	6	20	28		17	13	30	987
Tests Taken	<b>2012</b>	44	66	201	201	16	61	151		164	157	321	8,881
	<b>2013</b>	30	52	196	192	17	44	130		148	136	284	9,374
	<b>2014</b>	25	52	205	194	20	75	152		137	154	291	9,672

## PERCENTAGE ADVANCED (Level 3)

Test	Year	White	African Amer	Hispanic	Econ Disadv	Special Educ	LEP	At Risk	Migrant	Male	Female	All	District
<b>BIOLOGY</b>	<b>2012</b>	13.6	0.0	2.0	2.5	0.0	0.0	0.0		4.9	1.9	3.4	4.8
	<b>2013</b>	20.0	1.9	2.0	2.1	0.0	0.0	0.0		4.7	2.9	3.9	7.5
	<b>2014</b>	24.0	7.7	7.3	6.7	0.0	0.0	2.0		10.9	7.8	9.3	7.5
Tests Taken	<b>2012</b>	44	66	201	201	16	61	151		164	157	321	8,881
	<b>2013</b>	30	52	196	192	17	44	130		148	136	284	9,374
	<b>2014</b>	25	52	205	194	20	75	152		137	154	291	9,672

## AVERAGE PERCENTAGE OF ITEMS CORRECT BY REPORTING CATEGORY

<b>BIOLOGY</b>	1. Cell Structure and Function	2. Mechanisms of Genetics	3. Biological Evolution and Classification	4. Biological Processes and Systems	5. Interdependence within Environmental Systems
<b>2012</b>	50.9	49.7	55.6	45.9	53.4
<b>2013</b>	53.7	50.7	58.0	50.8	56.2
<b>2014</b>	51.3	59.8	64.5	62.9	53.7

## PERCENTAGE SATISFACTORY (Levels 2 or 3)

Test	Year	White	African Amer	Hispanic	Econ Disadv	Special Educ	LEP	At Risk	Migrant	Male	Female	All	District
U.S. HISTORY	2012		*		*					*	*	*	*
	2013												90.2
	2014	95.7	94.7	91.6	93.0	63.6	75.0	88.8		93.3	92.4	92.9	92.0
Tests Taken	2012		2		1					1	1	2	4
	2013												51
	2014	46	57	167	171	11	40	170		150	131	281	7,801

## NUMBER UNSATISFACTORY (Level 1)

Test	Year	White	African Amer	Hispanic	Econ Disadv	Special Educ	LEP	At Risk	Migrant	Male	Female	All	District
U.S. HISTORY	2012		*		*					*	*	*	*
	2013												5
	2014	2	3	14	12	4	10	19		10	10	20	625
Tests Taken	2012		2		1					1	1	2	4
	2013												51
	2014	46	57	167	171	11	40	170		150	131	281	7,801



## PERCENTAGE ADVANCED (Level 3)

Test	Year	White	African Amer	Hispanic	Econ Disadv	Special Educ	LEP	At Risk	Migrant	Male	Female	All	District
U.S. HISTORY	2012		*		*					*	*	*	*
	2013												2.0
	2014	37.0	1.8	5.4	5.8	0.0	5.0	4.1		10.7	9.2	10.0	10.3
Tests Taken	2012		2		1					1	1	2	4
	2013												51
	2014	46	57	167	171	11	40	170		150	131	281	7,801

## AVERAGE PERCENTAGE OF ITEMS CORRECT BY REPORTING CATEGORY

U.S. HISTORY	1. History	2. Geography and Culture	3. Government and Citizenship	4. Economics, Science, Technology, and Society
2012	*	*	*	*
2013				
2014	58.7	67.1	63.7	68.1

## PERCENTAGE SATISFACTORY (Levels 2 and 3)

Test	Year	White	African Amer	Hispanic	Econ Disadv	Special Educ	LEP	At Risk	Migrant	Male	Female	All	District
<b>ALGEBRA I</b>	<b>2012</b>	*	*	50.0	62.5		60.0	77.8		75.0	*	60.0	42.9
	<b>2013</b>		*	0.0	*		14.3	14.3		*	*	14.3	51.2
	<b>2014</b>	*	*	27.3	62.5		33.3	33.3		11.1	66.7	33.3	42.9
Tests Taken	<b>2012</b>	2	2	12	16		20	9		16	4	20	282
	<b>2013</b>		1	6	4		7	7		3	4	7	320
	<b>2014</b>	2	1	11	8		15	15		9	6	15	471

## NUMBER UNSATISFACTORY (Level 1)

Test	Year	White	African Amer	Hispanic	Econ Disadv	Special Educ	LEP	At Risk	Migrant	Male	Female	All	District
<b>ALGEBRA I</b>	<b>2012</b>	*	*	6	6		8	2		4	*	8	161
	<b>2013</b>		*	6	*		6	6		*	*	6	156
	<b>2014</b>	*	*	8	3		10	10		8	2	10	269
Tests Taken	<b>2012</b>	2	2	12	16		20	9		16	4	20	282
	<b>2013</b>		1	6	4		7	7		3	4	7	320
	<b>2014</b>	2	1	11	8		15	15		9	6	15	471

## PERCENTAGE ADVANCED (Level 3)

Test	Year	White	African Amer	Hispanic	Econ Disadv	Special Educ	LEP	At Risk	Migrant	Male	Female	All	District
<b>ALGEBRA I</b>	<b>2012</b>	*	*	0.0	0.0		0.0	0.0		0.0	*	0.0	2.5
	<b>2013</b>		*	0.0	*		0.0	0.0		*	*	0.0	4.1
	<b>2014</b>	*	*	0.0	0.0		0.0	0.0		0.0	0.0	0.0	2.3
Tests Taken	<b>2012</b>	2	2	12	16		20	9		16	4	20	282
	<b>2013</b>		1	6	4		7	7		3	4	7	320
	<b>2014</b>	2	1	11	8		15	15		9	6	15	471

## AVERAGE PERCENTAGE OF ITEMS CORRECT BY REPORTING CATEGORY

<b>ALGEBRA I</b>	1. Functional Relationships	2. Properties and Attributes of Functions	3. Linear Functions	4. Linear Equations and Inequalities	5. Quadratic and Other Nonlinear Functions
<b>2012</b>	43.8	37.5	48.0	36.5	38.9
<b>2013</b>	51.8	29.8	22.9	20.0	47.6
<b>2014</b>	45.8	28.9	32.0	31.3	31.1

## PERCENTAGE SATISFACTORY (Levels 2 and 3)

Test	Year	White	African Amer	Hispanic	Econ Disadv	Special Educ	LEP	At Risk	Migrant	Male	Female	All	District
ENGLISH I	2012												
	2013												
	2014		*	20.0	50.0	33.3	14.3	28.6		33.3	33.3	33.3	50.6
Tests Taken	2012												
	2013												
	2014		5	10	10	15	7	14		9	6	15	405
ENGLISH II	2012												
	2013												
	2014		*	*	*	*	*	*		*	*	*	65.3
Tests Taken	2012												
	2013												
	2014		2	3	5	5	3	5		3	2	5	340

## NUMBER UNSATISFACTORY (Level 1)

Test	Year	White	African Amer	Hispanic	Econ Disadv	Special Educ	LEP	At Risk	Migrant	Male	Female	All	District
ENGLISH I	2012												
	2013												
	2014		*	8	5	10	6	10		6	4	10	200
Tests Taken	2012												
	2013												
	2014		5	10	10	15	7	14		9	6	15	405
ENGLISH II	2012												
	2013												
	2014		*	*	*	*	*	*		*	*	*	118
Tests Taken	2012												
	2013												
	2014		2	3	5	5	3	5		3	2	5	340



## PERCENTAGE ADVANCED (Level 3)

Test	Year	White	African Amer	Hispanic	Econ Disadv	Special Educ	LEP	At Risk	Migrant	Male	Female	All	District
ENGLISH I	2012												
	2013												
	2014		*	0.0	0.0	0.0	0.0	0.0		0.0	0.0	0.0	3.5
Tests Taken	2012												
	2013												
	2014		5	10	10	15	7	14		9	6	15	405
ENGLISH II	2012												
	2013												
	2014		*	*	*	*	*	*		*	*	*	12.6
Tests Taken	2012												
	2013												
	2014		2	3	5	5	3	5		3	2	5	340

## AVERAGE PERCENTAGE OF ITEMS CORRECT BY REPORTING CATEGORY

ENGLISH I	1. Understanding & Analysis Across Genres	2. Understanding & Analysis of Literary Texts	3. Understanding & Analysis of Informational Texts	4. Literary Composition <sup>1</sup>	5. Revision	6. Editing
2012						
2013						
2014	55.0	45.2	53.3	2.6	37.8	43.0

ENGLISH II	1. Understanding & Analysis Across Genres	2. Understanding & Analysis of Literary Texts	3. Understanding & Analysis of Informational Texts	4. Expository Composition <sup>1</sup>	5. Revision	6. Editing
2012						
2013						
2014	*	*	*	*	*	*

<sup>1</sup>Average score points (range 0-6). A STAAR M composition is rated twice on a scale of 0 to 3, and the ratings are summed to determine score points for the composition. Score point scale: 0=Non-scorable; 2=Very Limited; 3=between Very Limited and Basic; 4=Basic; 5=between Basic and Satisfactory; 6=Satisfactory

## PERCENTAGE SATISFACTORY (Levels 2 and 3)

Test	Year	White	African Amer	Hispanic	Econ Disadv	Special Educ	LEP	At Risk	Migrant	Male	Female	All	District
<b>ALGEBRA I</b>	<b>2012</b>	*	*	*	*	0.0	*	*		*	*	0.0	32.5
	<b>2013</b>		*	*	*	*	*	*		*		*	36.9
	<b>2014</b>	*	*	10.0	11.1	13.3	0.0	0.0		0.0	28.6	13.3	46.1
Tests Taken	<b>2012</b>	1	1	4	2	6	2	4		5	1	6	280
	<b>2013</b>		3	2	5	5	3	5		5		5	339
	<b>2014</b>	1	4	10	9	15	7	13		8	7	15	360

## NUMBER UNSATISFACTORY (Level 1)

Test	Year	White	African Amer	Hispanic	Econ Disadv	Special Educ	LEP	At Risk	Migrant	Male	Female	All	District
<b>ALGEBRA I</b>	<b>2012</b>	*	*	*	*	6	*	*		*	*	6	189
	<b>2013</b>		*	*	*	*	*	*		*		*	214
	<b>2014</b>	*	*	9	8	13	7	13		8	5	13	194
Tests Taken	<b>2012</b>	1	1	4	2	6	2	4		5	1	6	280
	<b>2013</b>		3	2	5	5	3	5		5		5	339
	<b>2014</b>	1	4	10	9	15	7	13		8	7	15	360

## PERCENTAGE ADVANCED (Level 3)

Test	Year	White	African Amer	Hispanic	Econ Disadv	Special Educ	LEP	At Risk	Migrant	Male	Female	All	District
ALGEBRA I	2012	*	*	*	*	0.0	*	*		*	*	0.0	0.4
	2013		*	*	*	*	*	*		*		*	0.0
	2014	*	*	0.0	0.0	0.0	0.0	0.0		0.0	0.0	0.0	1.4
Tests Taken	2012	1	1	4	2	6	2	4		5	1	6	280
	2013		3	2	5	5	3	5		5		5	339
	2014	1	4	10	9	15	7	13		8	7	15	360

## AVERAGE PERCENTAGE OF ITEMS CORRECT BY REPORTING CATEGORY

ALGEBRA I	1. Functional Relationships	2. Properties and Attributes of Functions	3. Linear Functions	4. Linear Equations and Inequalities	5. Quadratic and Other Nonlinear Functions
2012	33.3	25.0	38.9	39.6	19.0
2013	*	*	*	*	*
2014	36.7	32.7	35.0	35.0	40.0

## PERCENTAGE SATISFACTORY (Levels 2 and 3)

Test	Year	White	African Amer	Hispanic	Econ Disadv	Special Educ	LEP	At Risk	Migrant	Male	Female	All	District
U.S. HISTORY	2012												
	2013												
	2014	*	*	0.0	0.0	0.0	*	0.0		0.0	*	0.0	0.0
Tests Taken	2012												
	2013												
	2014	1	1	7	7	9	5	9		7	2	9	226

## NUMBER UNSATISFACTORY (Level 1)

Test	Year	White	African Amer	Hispanic	Econ Disadv	Special Educ	LEP	At Risk	Migrant	Male	Female	All	District
U.S. HISTORY	2012												
	2013												
	2014	*	*	7	7	9	*	9		7	*	9	226
Tests Taken	2012												
	2013												
	2014	1	1	7	7	9	5	9		7	2	9	226



## PERCENTAGE ADVANCED (Level 3)

Test	Year	White	African Amer	Hispanic	Econ Disadv	Special Educ	LEP	At Risk	Migrant	Male	Female	All	District
U.S. HISTORY	2012												
	2013												
	2014	*	*	0.0	0.0	0.0	*	0.0		0.0	*	0.0	0.0
Tests Taken	2012												
	2013												
	2014	1	1	7	7	9	5	9		7	2	9	226

## AVERAGE PERCENTAGE OF ITEMS CORRECT BY REPORTING CATEGORY

U.S. HISTORY	1. History	2. Geography and Culture	3. Government and Citizenship	4. Economics, Science, Technology, and Society
2012				
2013				
2014	41.2	43.2	47.2	30.8

## PERCENTAGE DEMONSTRATING IMPROVEMENT

Grade	Level 1 in 2013		Level 2 in 2013		Level 3 in 2013		Levels 1-3 in 2013	
	Number Tested Both Years	Percentage Improved in 2014	Number Tested Both Years	Percentage Improved in 2014	Number Tested Both Years	Percentage Improved in 2014	Number Tested Both Years	Percentage Improved in 2014
9	27	25.9	12	33.3	0		39	28.2
10	7	42.9	8	12.5	0		15	26.7
11	5	*	8	37.5	0		13	30.8
12	1	*	8	25.0	0		9	33.3
ALL	40	30.0	36	27.8	0		76	28.9

**PERFORMANCE IN 2014**

Grade 2013-14  (N Rated)	Domain:	Listening		Speaking		Writing		Reading		Composite	
	2014 Level	N	%	N	%	N	%	N	%	N	%
9  (121)	Beginning	21	17.4	23	19.0	24	20.2	23	19.7	17	14.5
	Intermediate	21	17.4	19	15.7	26	21.8	26	22.2	24	20.5
	Advanced	44	36.4	49	40.5	44	37.0	44	37.6	41	35.0
	Advanced High	35	28.9	30	24.8	25	21.0	24	20.5	35	29.9
10  (67)	Beginning	4	6.0	4	6.0	4	6.3	6	9.7	3	4.9
	Intermediate	11	16.4	12	17.9	20	31.3	17	27.4	13	21.3
	Advanced	14	20.9	18	26.9	24	37.5	31	50.0	29	47.5
	Advanced High	38	56.7	33	49.3	16	25.0	8	12.9	16	26.2
11  (50)	Beginning	0	0.0	0	0.0	0	0.0	2	4.3	0	0.0
	Intermediate	2	4.0	5	10.0	9	18.4	7	15.2	5	10.9
	Advanced	15	30.0	19	38.0	18	36.7	25	54.3	22	47.8
	Advanced High	33	66.0	26	52.0	22	44.9	12	26.1	19	41.3
12  (30)	Beginning	0	0.0	0	0.0	0	0.0	1	3.6	0	0.0
	Intermediate	0	0.0	1	3.3	3	10.3	9	32.1	2	7.1
	Advanced	10	33.3	12	40.0	13	44.8	11	39.3	15	53.6
	Advanced High	20	66.7	17	56.7	13	44.8	7	25.0	11	39.3
ALL  (268)	Beginning	25	9.3	27	10.1	28	10.7	32	12.6	20	7.9
	Intermediate	34	12.7	37	13.8	58	22.2	59	23.3	44	17.5
	Advanced	83	31.0	98	36.6	99	37.9	111	43.9	107	42.5
	Advanced High	126	47.0	106	39.6	76	29.1	51	20.2	81	32.1

**PROGRESSION FROM  
2013 TO 2014**

Number Rated Both Years  N (%) Progressed	2014 Level	2013 Level			
		Beg	Int	Adv	Adv High
80  46 (57.5%)	Beginning	1			
	Intermediate	5	9		
	Advanced	1	7	24	
	Advanced High	0	0	33	
55  19 (34.5%)	Beginning	2			
	Intermediate	3	9		
	Advanced	0	2	25	
	Advanced High	0	0	14	
36  18 (50.0%)	Beginning	0			
	Intermediate	0	4		
	Advanced	0	2	14	
	Advanced High	0	0	16	
24  12 (50.0%)	Beginning	0			
	Intermediate	0	2		
	Advanced	0	3	10	
	Advanced High	0	0	9	
195  95 (48.7%)	Beginning	3			
	Intermediate	8	24		
	Advanced	1	14	73	
	Advanced High	0	0	72	

■ Indicates students who progressed at least one level from 2013 to 2014.

Test	Subtest	Year	Percent Tested		All Students			African American			Hispanic			White			District		
			%	Dist %	N	Mean	% at BMRK*	N	Mean	% at BMRK*	N	Mean	% at BMRK*	N	Mean	% at BMRK*	N	Mean	% at BMRK*
SAT	Critical Reading	2011-12	57.0	55.7	155	441	27.1	51	405	15.7	60	417	11.7	39	527	64.1	4,495	416	18.8
		2012-13	65.1	55.4	183	434	30.1	54	402	14.8	86	421	22.1	36	525	75.0	4,644	416	19.5
		2013-14	57.7	53.1	135	431	25.2	28	431	17.9	80	402	16.3	23	523	60.9	4,203	418	20.7
	Mathematics	2011-12	57.0	55.7	155	470	38.7	51	410	17.6	60	456	28.3	39	568	79.5	4,495	446	29.8
		2012-13	65.1	55.4	183	459	36.6	54	417	25.9	86	453	27.9	36	544	75.0	4,644	445	29.0
		2013-14	57.7	53.1	135	442	31.1	28	438	28.6	80	420	21.3	23	518	69.6	4,203	440	27.4
	Writing	2011-12	57.0	55.7	155	433	28.4	51	385	9.8	60	425	18.3	39	511	69.2	4,495	408	15.9
		2012-13	65.1	55.4	183	423	21.9	54	384	13.0	86	413	11.6	36	518	63.9	4,644	406	16.1
		2013-14	57.7	53.1	135	422	20.0	28	395	14.3	80	409	13.8	23	494	43.5	4,203	411	16.9
ACT	English	2011-12	32.0	37.1	87	18	55.2	28	17	46.4	34	17	47.1	22	23	81.8	2,995	15	33.3
		2012-13	26.3	29.3	74	18	54.1	13	13	23.1	35	17	48.6	24	23	83.3	2,454	16	34.0
		2013-14	33.8	42.0	79	15	27.8	20	14	20.0	47	14	19.1	9	22	77.8	3,324	15	29.3
	Mathematics	2011-12	32.0	37.1	87	21	43.7	28	19	25.0	34	20	35.3	22	25	77.3	2,995	18	22.7
		2012-13	26.3	29.3	74	20	36.5	13	18	15.4	35	19	28.6	24	23	62.5	2,454	19	24.4
		2013-14	33.8	42.0	79	19	22.8	20	18	30.0	47	18	12.8	9	21	55.6	3,324	18	21.8
	Reading	2011-12	32.0	37.1	87	19	39.1	28	17	25.0	34	18	35.3	22	24	68.2	2,995	17	23.7
		2012-13	26.3	29.3	74	20	45.9	13	15	7.7	35	19	45.7	24	23	70.8	2,454	17	26.5
		2013-14	33.8	42.0	79	18	29.1	20	17	25.0	47	17	21.3	9	23	66.7	3,324	17	23.8
	Science	2011-12	32.0	37.1	87	20	18.4	28	18	3.6	34	19	11.8	22	23	50.0	2,995	18	10.8
		2012-13	26.3	29.3	74	20	21.6	13	17	15.4	35	19	11.4	24	22	41.7	2,454	18	12.7
		2013-14	33.8	42.0	79	18	12.7	20	17	15.0	47	17	4.3	9	21	44.4	3,324	18	8.7
	Composite	2011-12	32.0	37.1	87	20	-	28	18	-	34	19	-	22	24	-	2,995	17	-
		2012-13	26.3	29.3	74	19	-	13	16	-	35	19	-	24	23	-	2,454	18	-
		2013-14	33.8	42.0	79	17	-	20	16	-	47	17	-	9	22	-	3,324	17	-

\*See the NOTES report for information about college-readiness benchmarks set by The College Board (SAT) and ACT, Inc.

Grade	Subtest	Year	All			African American			Hispanic			White			Other			District		
			N	Mean	% at BMRK*	N	Mean	% at BMRK*	N	Mean	% at BMRK*	N	Mean	% at BMRK*	N	Mean	% at BMRK*	N	Mean	% at BMRK*
9	Critical Reading	2011	46	37		9	35		32	37		4	*		1	*		1,979	39	
		2012	48	38		6	38		37	38		4	*		1	*		1,924	39	
		2013	52	37		4	*		43	36		4	*		1	*		1,788	39	
	Mathematics	2011	46	36		9	34		32	36		4	*		1	*		1,979	40	
		2012	48	39		6	40		37	38		4	*		1	*		1,924	40	
		2013	52	39		4	*		43	38		4	*		1	*		1,788	40	
	Writing	2011	46	36		9	31		32	36		4	*		1	*		1,979	39	
		2012	48	40		6	41		37	40		4	*		1	*		1,924	39	
		2013	52	37		4	*		43	35		4	*		1	*		1,788	39	
10	Critical Reading	2011	214	37	27.6	44	35	15.9	135	36	25.2	31	43	51.6	4	*	*	7,988	36	25.4
		2012	286	38	29.7	62	36	17.7	175	37	24.6	41	47	68.3	8	39	37.5	8,427	37	23.1
		2013	241	38	27.4	47	37	25.5	163	36	23.3	24	45	58.3	5	*	*	8,854	36	23.3
	Mathematics	2011	214	38	23.4	44	35	11.4	135	38	20.7	31	41	45.2	4	*	*	7,988	38	24.5
		2012	286	40	31.1	62	38	24.2	175	38	22.9	41	49	73.2	8	42	50.0	8,427	38	24.5
		2013	241	37	20.3	47	36	12.8	163	37	16.0	24	44	62.5	5	*	*	8,854	37	19.6
	Writing	2011	214	37	29.0	44	35	18.2	135	36	25.9	31	41	54.8	4	*	*	7,988	36	22.7
		2012	286	38	24.5	62	35	14.5	175	37	20.0	41	44	61.0	8	38	12.5	8,427	37	23.7
		2013	241	36	26.1	47	36	21.3	163	35	23.3	24	42	54.2	5	*	*	8,854	36	21.0
11	Critical Reading	2011	227	39	30.0	52	37	19.2	123	38	22.0	43	49	69.8	8	37	12.5	3,980	41	33.2
		2012	112	43	40.2	18	42	33.3	66	40	25.8	23	51	78.3	5	*	*	4,007	41	27.4
		2013	143	45	41.3	21	42	28.6	80	43	31.3	35	51	74.3	7	43	28.6	3,787	42	32.8
	Mathematics	2011	227	42	33.0	52	38	23.1	123	41	26.0	43	50	67.4	8	40	25.0	3,980	43	38.0
		2012	112	44	33.0	18	45	33.3	66	42	19.7	23	50	65.2	5	*	*	4,007	43	33.0
		2013	143	46	41.3	21	45	28.6	80	44	32.5	35	53	74.3	7	44	14.3	3,787	44	33.1
	Writing	2011	227	40	25.1	52	37	11.5	123	38	19.5	43	48	60.5	8	33	12.5	3,980	40	28.7
		2012	112	44	41.1	18	44	50.0	66	41	27.3	23	50	65.2	5	*	*	4,007	41	33.0
		2013	143	43	43.4	21	41	23.8	80	41	36.3	35	48	74.3	7	41	28.6	3,787	41	32.5

\*See the NOTES report for information about college readiness benchmarks set by The College Board for PSAT

Exams Taken		Average Score		Exams Passed		
N	Dist	Score	Dist	N	%	Dist

**ALL EXAMS**

<b>660</b>	18,984	<b>1.9</b>	1.9	<b>151</b>	<b>22.9</b>	25.1
------------	--------	------------	-----	------------	-------------	------

**Calculus BC**

<b>5</b>	248	*	3.4	*	*	69.8
----------	-----	---	-----	---	---	------

**English Language & Composition**

<b>131</b>	3,194	<b>2.0</b>	1.8	<b>33</b>	<b>25.2</b>	18.1
------------	-------	------------	-----	-----------	-------------	------

**European History**

<b>10</b>	164	<b>1.2</b>	1.5	<b>0</b>	<b>0.0</b>	18.3
-----------	-----	------------	-----	----------	------------	------

**Human Geography**

<b>47</b>	753	<b>1.2</b>	2.0	<b>4</b>	<b>8.5</b>	32.8
-----------	-----	------------	-----	----------	------------	------

**Statistics**

<b>26</b>	502	<b>1.2</b>	2.1	<b>2</b>	<b>7.7</b>	33.5
-----------	-----	------------	-----	----------	------------	------

Exams Taken		Mean Score		Passed		
School	Dist	School	Dist	N	%	Dist

**Biology**

<b>17</b>	738	<b>2.0</b>	1.9	<b>5</b>	<b>29.4</b>	23.4
-----------	-----	------------	-----	----------	-------------	------

**Chemistry**

<b>14</b>	388	<b>3.8</b>	2.0	<b>13</b>	<b>92.9</b>	32.0
-----------	-----	------------	-----	-----------	-------------	------

**English Literature & Composition**

<b>55</b>	2,374	<b>2.1</b>	1.8	<b>12</b>	<b>21.8</b>	18.0
-----------	-------	------------	-----	-----------	-------------	------

**French Language & Culture**

<b>5</b>	27	*	2.6	*	*	48.1
----------	----	---	-----	---	---	------

**Physics C: Mechanics**

<b>10</b>	198	<b>2.4</b>	2.5	<b>4</b>	<b>40.0</b>	44.4
-----------	-----	------------	-----	----------	-------------	------

**United States History**

<b>124</b>	2,570	<b>1.6</b>	1.5	<b>14</b>	<b>11.3</b>	12.6
------------	-------	------------	-----	-----------	-------------	------

Exams Taken		Mean Score		Passed		
School	Dist	School	Dist	N	%	Dist

**Calculus AB**

<b>5</b>	960	*	2.5	*	*	45.7
----------	-----	---	-----	---	---	------

**Economics: Macroeconomics**

<b>57</b>	755	<b>1.6</b>	1.4	<b>10</b>	<b>17.5</b>	12.5
-----------	-----	------------	-----	-----------	-------------	------

**Environmental Science**

<b>23</b>	986	<b>1.7</b>	1.7	<b>4</b>	<b>17.4</b>	19.8
-----------	-----	------------	-----	----------	-------------	------

**Government & Politics: United States**

<b>58</b>	1,420	<b>1.7</b>	1.3	<b>10</b>	<b>17.2</b>	7.0
-----------	-------	------------	-----	-----------	-------------	-----

**Spanish Language**

<b>17</b>	831	<b>3.8</b>	3.5	<b>17</b>	<b>100.0</b>	87.5
-----------	-----	------------	-----	-----------	--------------	------

**World History**

<b>56</b>	1,023	<b>1.6</b>	1.8	<b>12</b>	<b>21.4</b>	18.8
-----------	-------	------------	-----	-----------	-------------	------

**SEMESTER 1 TESTS**

Number Tested	Averages				% Passing		District % Passing	
	% Items Correct	Scale Score	Course Mark	Course Mark (no ACP)	ACP	Course	ACP	Course

**ALGEBRA I**

260	38.6	68.8	73.3	74.1	43.8	78.2	41.1	81.4
-----	------	------	------	------	------	------	------	------

**ALGEBRA II**

132	43.7	71.9	74.9	75.4	66.7	90.6	47.9	86.0
-----	------	------	------	------	------	------	------	------

**ALGEBRA II PRE-AP**

105	38.8	68.9	77.4	78.9	46.7	91.4	55.3	89.4
-----	------	------	------	------	------	------	------	------

**ART I**

201	80.1	85.1	84.5	84.3	93.5	90.6	79.1	94.8
-----	------	------	------	------	------	------	------	------

**BIOLOGY**

187	49.6	72.0	76.9	77.7	65.2	86.7	61.9	82.5
-----	------	------	------	------	------	------	------	------

**BIOLOGY PRE-AP**

101	55.4	70.3	74.1	74.7	58.4	73.3	71.3	90.4
-----	------	------	------	------	------	------	------	------

**CHEMISTRY**

231	33.7	68.4	73.9	74.9	37.7	79.6	49.7	83.5
-----	------	------	------	------	------	------	------	------

**CHEMISTRY PRE-AP**

71	58.3	78.1	78.7	78.9	87.3	85.9	64.2	93.3
----	------	------	------	------	------	------	------	------

**COMPUTER SCIENCE I PRE-AP**

8	30.5	57.5	81.6	85.9	0.0	87.5	70.5	95.8
---	------	------	------	------	-----	------	------	------

**ECONOMICS**

63	62.9	75.3	80.1	80.9	68.3	93.4	69.6	95.1
----	------	------	------	------	------	------	------	------

**ENGLISH I**

163	50.9	69.9	81.1	83.0	48.5	96.3	50.7	84.8
-----	------	------	------	------	------	------	------	------

**SEMESTER 2 TESTS**

Number Tested	Averages				% Passing		District % Passing	
	% Items Correct	Scale Score	Course Mark	Course Mark (no ACP)	ACP	Course	ACP	Course

**ALGEBRA I**

--	--	--	--	--	--	--	--	--

**ALGEBRA II**

79	43.6	70.8	73.0	73.3	60.8	82.1	55.9	84.7
----	------	------	------	------	------	------	------	------

**ALGEBRA II PRE-AP**

99	55.2	74.1	74.6	74.6	72.7	72.7	69.3	87.2
----	------	------	------	------	------	------	------	------

**ART I**

158	71.6	76.2	83.1	84.3	80.4	93.4	75.5	93.6
-----	------	------	------	------	------	------	------	------

**BIOLOGY**

--	--	--	--	--	--	--	--	--

**BIOLOGY PRE-AP**

--	--	--	--	--	--	--	--	--

**CHEMISTRY**

200	47.1	68.3	77.2	78.8	49.5	83.5	59.3	78.5
-----	------	------	------	------	------	------	------	------

**CHEMISTRY PRE-AP**

61	70.5	80.3	80.5	80.6	96.7	86.9	68.3	91.1
----	------	------	------	------	------	------	------	------

**COMPUTER SCIENCE I PRE-AP**

5	*	*	*	*	*	*	78.7	*
---	---	---	---	---	---	---	------	---

**ECONOMICS**

--	--	--	--	--	--	--	--	--

**ENGLISH I**

160	59.5	72.4	83.5	85.5	65.0	98.1	58.2	81.7
-----	------	------	------	------	------	------	------	------



**SEMESTER 1 TESTS**

Number Tested	Averages				% Passing		District % Passing	
	% Items Correct	Scale Score	Course Mark	Course Mark (no ACP)	ACP	Course	ACP	Course

**ENGLISH I FOR ESL**

20	44.9	68.8	76.3	77.5	60.0	73.7	54.2	88.3
----	------	------	------	------	------	------	------	------

**ENGLISH I PRE-AP**

117	56.2	72.0	84.9	87.2	63.2	94.0	71.2	92.1
-----	------	------	------	------	------	------	------	------

**ENGLISH II**

157	55.1	70.1	76.5	77.7	54.1	83.8	59.6	83.5
-----	------	------	------	------	------	------	------	------

**ENGLISH II FOR ESL**

13	53.5	72.6	83.3	85.3	69.2	100.0	50.3	93.8
----	------	------	------	------	------	-------	------	------

**ENGLISH II PRE-AP**

122	53.7	72.8	73.5	73.7	56.6	77.7	73.6	91.4
-----	------	------	------	------	------	------	------	------

**ENGLISH III**

162	59.5	71.1	77.8	78.9	59.9	88.5	55.7	89.1
-----	------	------	------	------	------	------	------	------

**ENGLISH IV**

126	58.1	72.1	76.7	77.5	58.7	87.1	67.9	91.6
-----	------	------	------	------	------	------	------	------

**FRENCH I**

79	66.4	77.6	83.8	84.9	77.2	85.9	68.1	85.0
----	------	------	------	------	------	------	------	------

**FRENCH II**

49	64.6	79.6	89.2	90.8	83.7	100.0	61.5	87.9
----	------	------	------	------	------	-------	------	------

**GEOMETRY**

209	43.9	69.9	74.3	75.0	54.1	82.2	61.9	83.3
-----	------	------	------	------	------	------	------	------

**GEOMETRY PRE-AP**

87	51.7	69.1	79.3	81.1	46.0	86.2	64.6	89.6
----	------	------	------	------	------	------	------	------

**SEMESTER 2 TESTS**

Number Tested	Averages				% Passing		District % Passing	
	% Items Correct	Scale Score	Course Mark	Course Mark (no ACP)	ACP	Course	ACP	Course

**ENGLISH I FOR ESL**

8	52.3	72.5	87.8	90.5	75.0	100.0	62.6	91.7
---	------	------	------	------	------	-------	------	------

**ENGLISH I PRE-AP**

111	60.3	74.7	87.6	89.9	75.7	97.3	78.6	93.9
-----	------	------	------	------	------	------	------	------

**ENGLISH II**

152	61.4	73.1	74.9	75.2	65.8	78.0	61.3	80.9
-----	------	------	------	------	------	------	------	------

**ENGLISH II FOR ESL**

10	58.5	74.1	79.1	80.0	70.0	100.0	62.3	87.4
----	------	------	------	------	------	-------	------	------

**ENGLISH II PRE-AP**

101	58.7	73.0	75.4	75.8	68.3	79.0	72.2	89.9
-----	------	------	------	------	------	------	------	------

**ENGLISH III**

141	62.4	68.7	75.9	77.1	54.6	76.8	52.9	82.6
-----	------	------	------	------	------	------	------	------

**ENGLISH IV**

--	--	--	--	--	--	--	--	--

**FRENCH I**

68	71.7	81.1	85.2	85.9	80.9	91.2	65.5	80.1
----	------	------	------	------	------	------	------	------

**FRENCH II**

44	66.9	78.8	87.7	89.3	79.5	97.7	58.4	81.8
----	------	------	------	------	------	------	------	------

**GEOMETRY**

180	45.0	70.5	73.9	74.5	56.7	72.3	66.7	79.7
-----	------	------	------	------	------	------	------	------

**GEOMETRY PRE-AP**

82	49.8	73.1	80.7	82.1	67.1	86.6	66.0	89.1
----	------	------	------	------	------	------	------	------

**SEMESTER 1 TESTS**

Number Tested	Averages				% Passing		District % Passing	
	% Items Correct	Scale Score	Course Mark	Course Mark (no ACP)	ACP	Course	ACP	Course

**GOVERNMENT**

61	61.8	75.6	85.5	87.3	68.9	98.4	58.9	94.1
----	------	------	------	------	------	------	------	------

**HS BAND: LISTENING AND MUSIC ELEMENTS**

36	84.2	96.4	98.6	86.1	100.0	67.0	98.9
----	------	------	------	------	-------	------	------

**HS HEALTH EDUCATION**

114	62.6	75.0	87.2	89.3	69.3	100.0	81.1	96.5
-----	------	------	------	------	------	-------	------	------

**IPC**

69	44.9	71.0	79.5	80.9	55.1	91.5	47.8	90.4
----	------	------	------	------	------	------	------	------

**MATH MODELS W/APPLICATIONS**

80	58.4	75.0	70.9	70.1	72.5	70.7	55.0	88.7
----	------	------	------	------	------	------	------	------

**PHYSICS**

207	39.2	69.1	75.6	76.8	42.0	85.9	37.8	85.3
-----	------	------	------	------	------	------	------	------

**PHYSICS PRE-AP**

110	50.2	70.7	78.5	79.9	49.1	85.5	53.9	94.5
-----	------	------	------	------	------	------	------	------

**PRE-CALCULUS**

35	63.1	76.9	71.0	69.9	82.9	65.7	53.4	87.9
----	------	------	------	------	------	------	------	------

**PRE-CALCULUS PRE-AP**

62	70.1	80.1	75.5	74.6	90.3	82.0	72.6	93.1
----	------	------	------	------	------	------	------	------

**READING II FOR ESL**

20	45.4	67.2	75.5	77.1	40.0	73.7	48.7	94.2
----	------	------	------	------	------	------	------	------

**READING III FOR ESL**

13	54.3	69.5	85.4	88.4	53.8	100.0	55.1	99.3
----	------	------	------	------	------	-------	------	------

**SEMESTER 2 TESTS**

Number Tested	Averages				% Passing		District % Passing	
	% Items Correct	Scale Score	Course Mark	Course Mark (no ACP)	ACP	Course	ACP	Course

**GOVERNMENT**

--	--	--	--	--	--	--	--	--

**HS BAND: LISTENING AND MUSIC ELEMENTS**

36	83.8	99.1	101.9	100.0	100.0	84.0	96.5
----	------	------	-------	-------	-------	------	------

**HS HEALTH EDUCATION**

84	60.8	72.0	82.7	84.6	61.9	97.6	76.7	95.7
----	------	------	------	------	------	------	------	------

**IPC**

72	49.1	72.2	76.9	77.6	61.1	86.9	54.5	80.5
----	------	------	------	------	------	------	------	------

**MATH MODELS W/APPLICATIONS**

65	51.7	75.9	71.7	71.0	72.3	67.7	58.5	85.3
----	------	------	------	------	------	------	------	------

**PHYSICS**

146	55.7	76.7	78.7	79.1	78.8	89.7	53.6	82.4
-----	------	------	------	------	------	------	------	------

**PHYSICS PRE-AP**

103	61.4	79.7	77.2	76.7	90.3	82.5	62.4	91.8
-----	------	------	------	------	------	------	------	------

**PRE-CALCULUS**

11	47.7	74.3	72.5	72.2	81.8	90.9	48.2	82.4
----	------	------	------	------	------	------	------	------

**PRE-CALCULUS PRE-AP**

48	61.9	78.0	73.0	72.1	85.4	64.6	62.6	90.8
----	------	------	------	------	------	------	------	------

**READING II FOR ESL**

8	53.4	68.9	87.1	90.3	62.5	100.0	70.2	91.1
---	------	------	------	------	------	-------	------	------

**READING III FOR ESL**

10	59.7	74.8	76.1	76.3	70.0	80.0	64.7	94.9
----	------	------	------	------	------	------	------	------

**SEMESTER 1 TESTS**

Number Tested	Averages				% Passing		District % Passing	
	% Items Correct	Scale Score	Course Mark	Course Mark (no ACP)	ACP	Course	ACP	Course

**SPANISH I**

137	70.4	80.3	82.7	83.1	70.8	94.1	71.3	91.2
-----	------	------	------	------	------	------	------	------

**SPANISH II**

218	75.0	83.3	87.3	88.0	80.3	94.9	72.2	93.0
-----	------	------	------	------	------	------	------	------

**U.S. HISTORY**

146	65.1	73.2	81.7	83.2	64.4	90.9	51.5	86.9
-----	------	------	------	------	------	------	------	------

**WORLD GEOGRAPHY**

181	50.4	70.8	76.3	77.2	50.8	90.9	48.7	86.7
-----	------	------	------	------	------	------	------	------

**WORLD GEOGRAPHY PRE-AP**

82	53.1	68.7	88.4	91.9	40.2	98.8	75.0	94.9
----	------	------	------	------	------	------	------	------

**WORLD HISTORY**

162	46.2	68.9	78.2	79.8	39.5	85.5	48.3	90.0
-----	------	------	------	------	------	------	------	------

**WORLD HISTORY PRE-AP**

69	61.7	74.5	79.8	80.8	69.6	82.4	65.5	95.0
----	------	------	------	------	------	------	------	------

**SEMESTER 2 TESTS**

Number Tested	Averages				% Passing		District % Passing	
	% Items Correct	Scale Score	Course Mark	Course Mark (no ACP)	ACP	Course	ACP	Course

**SPANISH I**

116	66.6	77.7	78.3	78.4	62.1	86.7	72.9	84.3
-----	------	------	------	------	------	------	------	------

**SPANISH II**

196	79.0	86.0	88.2	88.6	84.2	94.4	76.5	89.2
-----	------	------	------	------	------	------	------	------

**U.S. HISTORY**

--	--	--	--	--	--	--	--	--

**WORLD GEOGRAPHY**

169	51.8	71.1	73.9	74.4	60.9	78.3	57.7	82.9
-----	------	------	------	------	------	------	------	------

**WORLD GEOGRAPHY PRE-AP**

75	57.2	71.5	85.8	88.3	62.7	96.0	79.5	94.5
----	------	------	------	------	------	------	------	------

**WORLD HISTORY**

143	63.7	75.8	83.0	84.2	72.0	95.0	58.5	85.3
-----	------	------	------	------	------	------	------	------

**WORLD HISTORY PRE-AP**

64	79.7	84.8	86.8	87.2	98.4	98.4	65.4	94.3
----	------	------	------	------	------	------	------	------