

DATA PACKET

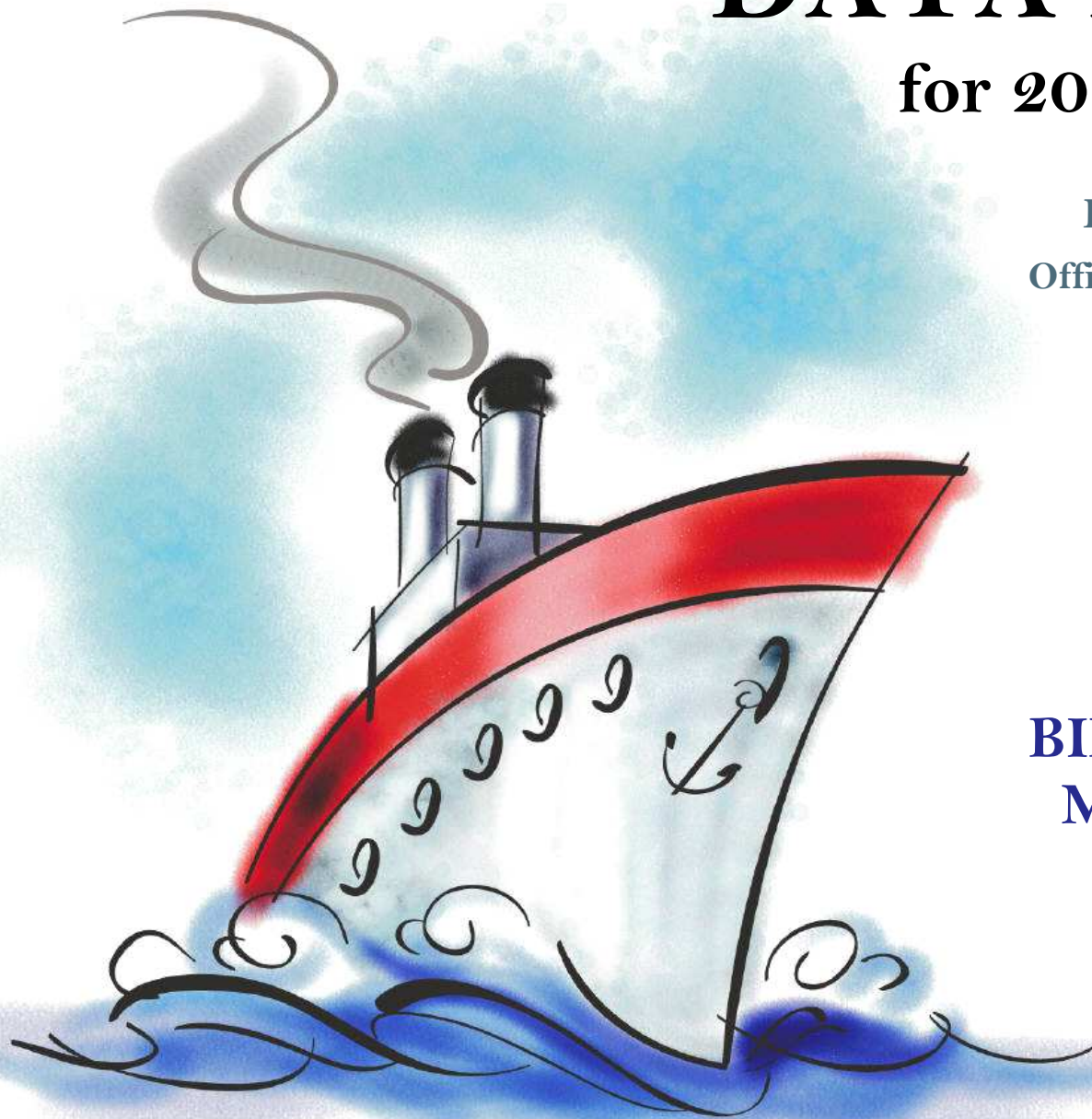
for 2014-15 planning

Evaluation & Assessment
Office of Institutional Research
<http://mydata.dallasisd.org>
OIR@dallasisd.org

September 5, 2014

School Number 62

**BILLY EARL DADE
MIDDLE SCHOOL**



Dallas Independent School District

2. Contents Table of Contents

STUDENTS AND STAFF

- 5. Summary Summary of Student and Teacher Statistics
- 7. Enroll (2) Enrollment Statistics by Select Student Group
- 9. Teachers Teacher Statistics

STAAR (English)

- 10. Reading (3-8) STAAR 3-8 Reading in English
- 18. Math (3-8) STAAR 3-8 Mathematics in English
- 26. Science (3-8) STAAR 3-8 Science in English

STAAR L

- 34. Math (3-8) STAAR L 3-8 Mathematics

STAAR M

- 38. Reading (3-8) STAAR M 3-8 Reading
- 46. Math (3-8) STAAR M 3-8 Mathematics
- 54. SS (3-8) STAAR M 3-8 Social Studies

ENGLISH PROFICIENCY

- 58. WMLS Woodcock-Muñoz Language Survey

LOCAL ASSESSMENT

- 60. ACP Assessments of Course Performance

3. Notes Notes and Data Descriptions

- 6. Enroll (1) Enrollment Statistics by Ethnicity
- 8. Attendance Student Attendance Statistics

- 14. Writing (3-8) STAAR 3-8 Writing in English
- 22. Math (EOC) STAAR EOC Mathematics
- 30. SS (3-8) STAAR 3-8 Social Studies in English

- 42. Writing (3-8) STAAR M 3-8 Writing
- 50. Science (3-8) STAAR M 3-8 Science

- 59. TELPAS Texas English Language Proficiency Assessment System

2013-14 SCHOOL SUMMARY

- Student percentages are computed as the percentage of total student enrollment.
- Additional statistics are available in ENROLLMENT and TEACHER reports.
- Race/ethnic categories are based on the newest federal standards for ethnicity and race reporting, though some categories have been combined because of small group sizes. Students reporting their ethnicity as “Hispanic” are not counted in any race category.
- “Economically disadvantaged” students are those who qualify for free or reduced-price lunch through the federal government's program.
- Teacher demographics and assignments are from the district's Public Education Information Management System (PEIMS) submission to the TEA.

ENROLLMENT

- Statistics are based on the school's enrollment at the end of the fifth six-weeks grading period.
- “Economically disadvantaged” students are those receiving free or reduced-price lunches.
- “New” students were new to the district in 2013-14. They are counted as new if not enrolled in a district campus before the last day of the 2012-13 school year.
- The “retention rate” is the percentage of students in the same grade at the end of the fifth six-weeks grading period for both 2012-13 and 2013-14.

ATTENDANCE

- Statistics are based on student attendance through the end of the sixth six-weeks grading period (the end of the school year).
- “Average daily membership” is the total number of school days students were ENROLLED divided by the number of school days in the year.
- The “average daily attendance” number (N) is the total number of school days students were IN ATTENDANCE divided by the number of school days in the year. The “average daily attendance” percentage (%) is the average attendance rate. For each student, the number of days attended is divided by the number of days enrolled. This rate is then averaged across students.
- The number (N) of “yearly transactions” is the total number of transfer and withdrawal transactions in the school year. The percentage (%) is the number of transactions divided by “average daily membership,” which gives (on average) the percentage of the membership associated with a transaction.
- “Continuously enrolled” students are enrolled and in attendance for a minimum number of instructional days in at least one course at the school between the beginning of the school year and the first day of the main STAAR testing period. The minimum number varies depending on the school year's calendar, but is typically around 130 days.
- The “stability rate” is the number of continuously enrolled students divided by “average daily membership.”

TEACHERS

- Teacher demographics and assignments are from the district's Public Education Information Management System (PEIMS) submission to the TEA.
- Teacher absences counted towards the average DO NOT include vacation days (coded as VAC in personnel database).
- Retention rate for a school year is computed with numerator “# of teachers assigned to the school both that year and the year prior” and denominator “# of teachers assigned to the school for the prior year.” That is, the retention rate is the percentage of the prior year's teachers who continued at the school.

STAAR, STAAR L, and STAAR M

- Cells marked with an asterisk (*) indicate five or fewer students were tested. Blank cells indicate no students were tested.
- Student group assignments are from the district's Public Education Information Management System (PEIMS) submission to the TEA.
- STAAR statistics are based on results from standard STAAR only. STAAR L and STAAR M statistics are computed separately, following TEA reporting practice.
- “Percentage Satisfactory” is the percentage of students achieving Level 2 (Satisfactory) or Level 3 (Advanced).
- Statistics by reporting category are averages for all students (across student groups and genders).
- An “average percentage correct” is computed as follows: for each student, divide the number of items correctly answered by the total number of items in the test section, then average the resulting percentages across all students. For short answers on EOC English tests, an “average rating” is presented; STAAR EOC short answers are rated on a scale of 0 to 3. For written compositions on writing tests, “average score points” is presented. Additional details provided in report footnotes.
- Reading and mathematics statistics for SSI grades 5 and 8 are based on scores cumulative through the second administration.

TELPAS

- Students are counted as having tested if any one of the four domains is rated. Because a TELPAS composite rating is not assigned to a student unless all four domains are rated, the number of TELPAS composite ratings may be smaller than the number tested.
- If a student's composite rating did not increase at least one level from 2013 to 2014, the TEA did not report the 2013 composite rating.
- If a student is rated as advanced high in 2014, the TEA does not differentiate between the advanced and advanced high levels from 2013.

ACP

- Cells marked with an asterisk (*) indicate five or fewer students were tested. Blank cells indicate no students were tested.
- The ACPs are semester exams administered in grades K-12. Not all courses have ACPs. In MIDDLE and HIGH school, ACP results account for a portion of students' final semester grades (10% and 15% respectively). “Average course mark (no ACP)” is computed from semester grades before factoring in ACP scores. In ELEMENTARY school, ACP results account for 5% of students' semester grades for core courses; course-grade statistics are not reported in data packets for elementary grades.
- Raw scores on the ACPs (percentage of items correct) are scaled each year to maintain similar annual passing rates for the district.
- A scale score of at least 70 percent is required to pass an ACP. A course mark of at least 70 percent is required to pass a course.
- Statistics are computed separately for Semester 1 and Semester 2 tests; time of administration during the school year is not relevant. Results from tests written for different school years are not combined.

STUDENT ENROLLMENT

Grade	Enrollment
6	276
7	266
8	258
ALL	800

STUDENT AND TEACHER RACE/ETHNICITY

Ethnicity/Race	Students		Teachers	
	Number	Percent	Number	Percent
Black/African American	548	68.5	38	67.9
American Indian/Alaska Native	0	0.0	*	*
Asian/Hawaiian/Pacific Islander	0	0.0	*	*
Hispanic	248	31.0	1	1.8
White	3	0.4	16	28.6
Multiple	1	0.1	0	0.0
Other* (teachers only)	—	—	1	1.8
Not reported (students only)	0	0.0	—	—

*For teachers, "Other" category includes American Indian/Alaska Native and Asian/Hawaiian/Pacific Islander.

SELECT STUDENT GROUP ENROLLMENT

Group	Number	Percent
At-Risk	653	81.6
Economically disadvantaged	752	94.0
Limited English proficient (LEP)	173	21.6
Special education	141	17.6
Talented and Gifted (TAG)	64	8.0

Grade	Year	Enrollment	African American		American Indian		Asian		Hispanic		White		Multiple category	
			N	%	N	%	N	%	N	%	N	%	N	%
6	2012	133	104	78.2	0	0.0	0	0.0	27	20.3	0	0.0	1	0.8
	2013	142	107	75.4	0	0.0	0	0.0	33	23.2	2	1.4	0	0.0
	2014	276	196	71.0	0	0.0	0	0.0	78	28.3	2	0.7	0	0.0
7	2012	125	95	76.0	0	0.0	0	0.0	28	22.4	2	1.6	0	0.0
	2013	132	95	72.0	0	0.0	0	0.0	35	26.5	1	0.8	1	0.8
	2014	266	181	68.0	0	0.0	0	0.0	85	32.0	0	0.0	0	0.0
8	2012	131	105	80.2	0	0.0	0	0.0	26	19.8	0	0.0	0	0.0
	2013	115	81	70.4	1	0.9	0	0.0	32	27.8	1	0.9	0	0.0
	2014	258	171	66.3	0	0.0	0	0.0	85	32.9	1	0.4	1	0.4
6-8	2012	389	304	78.1	0	0.0	0	0.0	81	20.8	2	0.5	1	0.3
	2013	389	283	72.8	1	0.3	0	0.0	100	25.7	4	1.0	1	0.3
	2014	800	548	68.5	0	0.0	0	0.0	248	31.0	3	0.4	1	0.1

Grade	Year	Enrollment	Economically Disadvantaged		LEP		Special Education		At Risk		TAG		New (to District)		Gender		Retention Rate (%)
			N	%	N	%	N	%	N	%	N	%	N	%	% Male	% Female	
6	2012	133	118	88.7	17	12.8	13	9.8	88	66.2	20	15.0	15	11.3	58.6	41.4	0.8
	2013	142	138	97.2	28	19.7	20	14.1	108	76.1	20	14.1	13	9.2	50.7	49.3	2.8
	2014	276	268	97.1	54	19.6	43	15.6	220	79.7	27	9.8	25	9.1	53.3	46.7	1.4
7	2012	125	112	89.6	10	8.0	14	11.2	78	62.4	16	12.8	14	11.2	52.8	47.2	4.8
	2013	132	125	94.7	24	18.2	17	12.9	89	67.4	16	12.1	12	9.1	58.3	41.7	5.3
	2014	266	251	94.4	66	24.8	50	18.8	226	85.0	21	7.9	22	8.3	51.1	48.9	0.8
8	2012	131	116	88.5	11	8.4	15	11.5	97	74.0	18	13.7	7	5.3	56.5	43.5	3.8
	2013	115	110	95.7	13	11.3	11	9.6	70	60.9	18	15.7	10	8.7	56.5	43.5	2.6
	2014	258	233	90.3	53	20.5	48	18.6	207	80.2	16	6.2	28	10.9	51.6	48.4	0.4
6-8	2012	389	346	88.9	38	9.8	42	10.8	263	67.6	54	13.9	36	9.3	56.0	44.0	3.1
	2013	389	373	95.9	65	16.7	48	12.3	267	68.6	54	13.9	35	9.0	55.0	45.0	3.6
	2014	800	752	94.0	173	21.6	141	17.6	653	81.6	64	8.0	75	9.4	52.0	48.0	0.9

Grade	Year	Average Daily Membership		Average Daily Attendance				Yearly Transactions			Continuously Enrolled		Stability Rate	
		N	District	N	%	District N	District %	N	%	District %	N	District	%	District
6	2012	136	10,683	131	96.2	10,315	96.6	48	35.3	17.6	109	9,420	80.2	88.2
	2013	142	11,463	136	95.9	11,062	96.5	52	36.5	21.1	125	10,320	87.8	90.0
	2014	280	10,808	266	95.0	10,413	96.3	89	31.8	20.0	227	9,554	81.1	88.4
7	2012	125	10,204	119	94.9	9,727	95.3	50	39.9	23.8	96	8,576	76.7	84.0
	2013	130	10,542	123	94.2	10,116	96.0	51	39.1	24.5	105	9,357	80.5	88.8
	2014	266	11,195	253	94.9	10,729	95.8	85	31.9	22.1	227	9,852	85.2	88.0
8	2012	134	10,369	125	93.4	9,838	94.9	21	15.6	15.5	104	8,711	77.5	84.0
	2013	115	9,955	109	95.5	9,486	95.3	28	24.4	17.6	93	8,664	81.2	87.0
	2014	258	10,449	244	94.6	9,970	95.4	37	14.4	13.1	203	9,097	78.8	87.1
6-8	2012	395	31,256	375	94.8	29,880	95.6	119	30.1	18.9	309	26,707	78.2	85.4
	2013	387	31,960	369	95.2	30,665	96.0	131	33.8	21.1	323	28,341	83.4	88.7
	2014	804	32,451	762	94.8	31,112	95.9	211	26.3	18.5	657	28,503	81.7	87.8

Teachers: 56

DISTRIBUTIONS

Ethnicity/Race	Number	Percentage
African American	38	67.9
Hispanic	1	1.8
White	16	28.6
Multiple	0	0.0
Other	1	1.8

Gender	Number	Percentage
Female	37	66.1
Male	19	33.9

ATTENDANCE / RETENTION

	Average Absences	Retention Rate
2011-12	10.1	—
2012-13	9.6	75.0
2013-14	5.9	77.8

YEARS EXPERIENCE

Years	Number	Percentage
Beginning (0)	23	41.1
1	4	7.1
2	0	0.0
3	3	5.4
4	3	5.4
5	1	1.8
1-3	7	12.5
More than 3	26	46.4
1 - 5	11	19.6
6 - 10	11	19.6
11 - 20	7	12.5
More than 20	4	7.1

PERCENTAGE SATISFACTORY (Levels 2 or 3)

Grade	Year	White	African Amer	Hispanic	Econ Disadv	Special Educ	LEP	At Risk	Migrant	Male	Female	All	District	Number Tested (All Students)
6	2012		55.0	74.1	60.5	30.0	70.6	42.9		57.1	61.5	58.9	63.5	129
	2013	*	39.4	55.9	43.8	25.0	51.6	31.6		43.7	45.0	44.3	57.7	131
	2014	*	39.1	53.0	43.3	11.1	47.9	33.5		33.9	52.1	42.8	63.1	243
7	2012	*	55.2	70.4	54.9	0.0	44.4	38.3		52.4	64.2	57.8	67.5	116
	2013	*	54.0	76.5	61.0	30.0	68.0	50.0		54.8	69.2	60.8	67.3	125
	2014		47.5	46.8	46.9	20.0	37.1	33.9		44.2	50.4	47.3	60.5	239
8	2012		61.0	92.3	64.9	30.0	90.0	58.5		62.5	74.1	67.5	71.3	126
	2013	*	75.0	79.3	75.5	*	80.0	59.3		77.0	77.1	77.1	82.7	109
	2014	*	79.6	79.5	78.9	41.2	69.6	76.5	*	78.8	80.7	79.7	81.5	227
6-8	2012	*	57.1	78.8	60.2	21.4	69.4	47.6		57.5	66.7	61.5	67.4	371
	2013	*	54.5	70.1	58.9	27.3	62.1	45.6		57.6	62.5	59.7	68.6	365
	2014	*	54.5	59.6	55.6	26.1	50.0	47.8	*	51.5	60.8	56.1	68.2	709

NUMBER TESTED IN GRADES 6-8													
2012	2	287	80	327	28	36	212		212	159	371	29,211	
2013	5	253	97	348	22	66	206		205	160	365	29,692	
2014	3	486	218	619	46	156	517	3	357	352	709	30,015	

NUMBER UNSATISFACTORY (Level 1)

Grade	Year	White	African Amer	Hispanic	Econ Disadv	Special Educ	LEP	At Risk	Migrant	Male	Female	All	District	Number Tested (All Students)
6	2012		45	7	45	7	5	40		33	20	53	3,673	129
	2013	*	57	15	72	6	15	54		40	33	73	4,523	131
	2014	*	106	31	131	8	25	111		82	57	139	3,679	243
7	2012	*	39	8	46	8	5	37		30	19	49	3,070	116
	2013	*	40	8	46	7	8	34		33	16	49	3,215	125
	2014		84	42	103	16	39	119		67	59	126	4,075	239
8	2012		39	2	39	7	1	34		27	14	41	2,786	126
	2013	*	18	6	25	*	2	24		14	11	25	1,586	109
	2014	*	31	15	41	10	14	40	*	24	22	46	1,797	227
6-8	2012	*	123	17	130	22	11	111		90	53	143	9,529	371
	2013	*	115	29	143	16	25	112		87	60	147	9,324	365
	2014	*	221	88	275	34	78	270	*	173	138	311	9,551	709

NUMBER TESTED IN GRADES 6-8													
2012	2	287	80	327	28	36	212			212	159	371	29,211
2013	5	253	97	348	22	66	206			205	160	365	29,692
2014	3	486	218	619	46	156	517	3		357	352	709	30,015

PERCENTAGE ADVANCED (Level 3)

Grade	Year	White	African Amer	Hispanic	Econ Disadv	Special Educ	LEP	At Risk	Migrant	Male	Female	All	District	Number Tested (All Students)
6	2012		5.0	7.4	5.3	0.0	0.0	0.0		2.6	9.6	5.4	8.3	129
	2013	*	7.4	5.9	7.0	0.0	6.5	3.8		5.6	8.3	6.9	11.3	131
	2014	*	1.7	0.0	1.3	0.0	0.0	0.6		0.8	1.7	1.2	7.1	243
7	2012	*	3.4	11.1	3.9	0.0	0.0	0.0		4.8	5.7	5.2	10.3	116
	2013	*	3.4	8.8	5.1	0.0	4.0	1.5		4.1	5.8	4.8	8.7	125
	2014		6.3	6.3	6.2	0.0	4.8	3.3		6.7	5.9	6.3	10.0	239
8	2012		2.0	7.7	3.6	0.0	0.0	0.0		5.6	0.0	3.2	9.9	126
	2013	*	6.9	13.8	8.8	*	10.0	1.7		3.3	16.7	9.2	15.5	109
	2014	*	5.9	2.7	5.2	0.0	2.2	2.4	*	1.8	9.6	5.7	13.1	227
6-8	2012	*	3.5	8.8	4.3	0.0	0.0	0.0		4.2	5.0	4.6	9.5	371
	2013	*	5.9	9.3	6.9	0.0	6.1	2.4		4.4	10.0	6.8	11.7	365
	2014	*	4.5	3.2	4.0	0.0	2.6	2.1	*	3.1	5.7	4.4	10.1	709

NUMBER TESTED IN GRADE 6-8													
2012	2	287	80	327	28	36	212			212	159	371	29,211
2013	5	253	97	348	22	66	206			205	160	365	29,692
2014	3	486	218	619	46	156	517	3		357	352	709	30,015

AVERAGE PERCENTAGE OF ITEMS CORRECT BY REPORTING CATEGORY

Grade	Year	REPORTING CATEGORY		
		1. Understanding Across Genres (GR 3-5) 1. Understanding/Analysis Across Genres (GR 6-8)	2. Understanding/Analysis of Literary Texts	3. Understanding/Analysis of Informational Texts
6	2012	62.2	61.4	55.4
	2013	59.2	56.6	51.3
	2014	50.2	49.3	46.1
7	2012	60.3	55.4	56.7
	2013	55.5	53.4	62.1
	2014	54.9	52.7	49.0
8	2012	61.0	55.3	56.6
	2013	68.2	63.0	58.2
	2014	65.0	61.1	57.0
6-8	2012	61.2	57.5	56.2
	2013	60.6	57.4	57.1
	2014	56.6	54.2	50.6

PERCENTAGE SATISFACTORY (Levels 2 or 3)

Grade	Year	White	African Amer	Hispanic	Econ Disadv	Special Educ	LEP	At Risk	Migrant	Male	Female	All	District	Number Tested (All Students)
7	2012	*	48.9	57.7	48.0	0.0	22.2	21.0		40.3	62.3	50.4	59.2	115
	2013	*	43.0	48.6	44.5	20.0	45.8	27.8		38.4	52.8	44.4	57.1	126
	2014		41.0	39.7	41.2	10.0	31.1	27.6		34.2	47.1	40.6	54.6	239

NUMBER TESTED IN GRADE 7													
2012	1	88	26	102	8	9	62		62	53	115	9,456	
2013	2	86	35	119	10	24	72		73	53	126	9,785	
2014		161	78	194	20	61	181		120	119	239	10,339	

NUMBER UNSATISFACTORY (Level 1)

Grade	Year	White	African Amer	Hispanic	Econ Disadv	Special Educ	LEP	At Risk	Migrant	Male	Female	All	District	Number Tested (All Students)
7	2012	*	45	11	53	8	7	49		37	20	57	3,859	115
	2013	*	49	18	66	8	13	52		45	25	70	4,198	126
	2014		95	47	114	18	42	131		79	63	142	4,690	239

NUMBER TESTED IN GRADE 7													
2012	1	88	26	102	8	9	62		62	53	115	9,456	
2013	2	86	35	119	10	24	72		73	53	126	9,785	
2014		161	78	194	20	61	181		120	119	239	10,339	

PERCENTAGE ADVANCED (Level 3)

Grade	Year	White	African Amer	Hispanic	Econ Disadv	Special Educ	LEP	At Risk	Migrant	Male	Female	All	District	Number Tested (All Students)
7	2012	*	1.1	0.0	0.0	0.0	0.0	0.0		0.0	1.9	0.9	3.4	115
	2013	*	0.0	0.0	0.0	0.0	0.0	0.0		0.0	0.0	0.0	1.5	126
	2014		0.0	0.0	0.0	0.0	0.0	0.0		0.0	0.0	0.0	3.0	239

NUMBER TESTED IN GRADE 7													
2012	1	88	26	102	8	9	62		62	53	115	9,456	
2013	2	86	35	119	10	24	72		73	53	126	9,785	
2014		161	78	194	20	61	181		120	119	239	10,339	

AVERAGE PERCENTAGE OF ITEMS CORRECT BY REPORTING CATEGORY

Grade	Year	REPORTING CATEGORY			
		1. Composition ¹ GR 4: Personal Narrative GR 7: Expository	1. Composition ¹ GR 4: Expository GR 7: Personal Narrative	2. Revision	3. Editing
7	2012	1.9	2.1	61.6	53.0
	2013	3.7	4.2	59.7	55.6
	2014	3.4	3.7	57.0	50.7

¹Average score points (range 0-8). A STAAR composition is rated twice on a scale of 1 to 4, and the ratings are summed to determine score points for the composition. Score point scale: 0=Non-scorable; 2=Very Limited; 3=between Very Limited and Basic; 4=Basic; 5=between Basic and Satisfactory; 6=Satisfactory; 7=between Satisfactory and Accomplished; 8=Accomplished

PERCENTAGE SATISFACTORY (Levels 2 or 3)

Grade	Year	White	African Amer	Hispanic	Econ Disadv	Special Educ	LEP	At Risk	Migrant	Male	Female	All	District	Number Tested (All Students)
6	2012		52.0	63.0	57.0	20.0	58.8	45.1		55.3	54.7	55.0	66.4	129
	2013	*	46.8	67.6	52.3	0.0	67.7	40.5		53.5	51.7	52.7	60.6	131
	2014	*	35.6	49.2	40.8	22.2	46.7	28.5		32.2	47.1	39.6	64.3	240
7	2012	*	37.9	42.3	35.6	0.0	11.1	15.0		33.9	45.3	39.1	59.9	115
	2013	*	31.0	33.3	30.8	0.0	29.2	20.6		24.7	43.1	32.3	59.9	124
	2014		36.9	47.4	40.2	20.0	40.7	31.1		41.5	39.0	40.3	55.1	236
8	2012		45.3	70.0	51.0	0.0	63.6	42.1		54.0	44.2	50.0	51.9	106
	2013	*	50.0	84.2	56.0	*	88.9	48.1		68.2	47.2	58.8	74.0	80
	2014	*	54.1	76.9	59.3	52.9	70.7	55.3		57.6	66.0	61.8	73.2	199
6-8	2012	*	45.4	57.5	48.2	7.1	48.6	35.3		48.3	48.3	48.3	60.3	350
	2013	*	41.8	58.1	45.3	18.2	56.3	35.7		45.7	47.6	46.6	63.7	335
	2014	*	41.3	57.4	45.8	32.6	51.0	38.0		42.9	49.9	46.4	63.3	675

NUMBER TESTED IN GRADES 6-8													
2012	2	273	73	311	28	37	199		201	149	350	26,044	
2013	4	237	86	320	22	64	199		188	147	335	26,676	
2014	3	467	204	589	46	145	503		338	337	675	27,304	

NUMBER UNSATISFACTORY (Level 1)

Grade	Year	White	African Amer	Hispanic	Econ Disadv	Special Educ	LEP	At Risk	Migrant	Male	Female	All	District	Number Tested (All Students)
6	2012		48	10	49	8	7	39		34	24	58	3,327	129
	2013	*	50	11	61	8	10	47		33	29	62	4,133	131
	2014	*	112	32	135	7	24	118		82	63	145	3,478	240
7	2012	*	54	15	65	8	8	51		41	29	70	3,705	115
	2013	*	60	22	81	10	17	54		55	29	84	3,851	124
	2014		101	40	116	16	35	122		69	72	141	4,536	236
8	2012		47	6	47	10	4	44		29	24	53	3,319	106
	2013	*	28	3	33	*	1	27		14	19	33	1,709	80
	2014	*	61	15	68	8	12	72		42	34	76	2,001	199
6-8	2012	*	149	31	161	26	19	134		104	77	181	10,351	350
	2013	*	138	36	175	18	28	128		102	77	179	9,693	335
	2014	*	274	87	319	31	71	312		193	169	362	10,015	675

NUMBER TESTED IN GRADES 6-8													
2012	2	273	73	311	28	37	199		201	149	350	26,044	
2013	4	237	86	320	22	64	199		188	147	335	26,676	
2014	3	467	204	589	46	145	503		338	337	675	27,304	

PERCENTAGE ADVANCED (Level 3)

Grade	Year	White	African Amer	Hispanic	Econ Disadv	Special Educ	LEP	At Risk	Migrant	Male	Female	All	District	Number Tested (All Students)
6	2012		1.0	3.7	1.8	0.0	5.9	1.4		2.6	1.9	2.3	9.8	129
	2013	*	0.0	0.0	0.0	0.0	0.0	0.0		0.0	0.0	0.0	8.5	131
	2014	*	1.1	1.6	1.3	0.0	0.0	0.0		1.7	0.8	1.3	9.6	240
7	2012	*	0.0	0.0	0.0	0.0	0.0	0.0		0.0	0.0	0.0	6.3	115
	2013	*	0.0	0.0	0.0	0.0	0.0	0.0		0.0	0.0	0.0	4.8	124
	2014		0.0	0.0	0.0	0.0	0.0	0.0		0.0	0.0	0.0	6.7	236
8	2012		0.0	0.0	0.0	0.0	0.0	0.0		0.0	0.0	0.0	0.4	106
	2013	*	0.0	0.0	0.0	*	0.0	0.0		0.0	0.0	0.0	0.9	80
	2014	*	0.0	3.1	0.6	0.0	2.4	0.6		0.0	2.0	1.0	1.0	199
6-8	2012	*	0.4	1.4	0.6	0.0	2.7	0.5		1.0	0.7	0.9	6.1	350
	2013	*	0.0	0.0	0.0	0.0	0.0	0.0		0.0	0.0	0.0	5.3	335
	2014	*	0.4	1.5	0.7	0.0	0.7	0.2		0.6	0.9	0.7	6.2	675

NUMBER TESTED IN GRADE 6-8													
2012	2	273	73	311	28	37	207		201	149	350	26,044	
2013	4	237	86	320	22	64	199		188	147	335	26,676	
2014	3	467	204	589	46	145	503		338	337	675	27,304	

AVERAGE PERCENTAGE OF ITEMS CORRECT BY REPORTING CATEGORY

Grade	Year	REPORTING CATEGORY				
		1. Numbers, Operations, and Quantitative Reasoning	2. Patterns, Relationships, and Algebraic Reasoning	3. Geometry and Spatial Reasoning	4. Measurement	5. Probability and Statistics
6	2012	41.5	47.9	45.4	42.5	44.8
	2013	47.1	44.1	39.5	34.4	47.2
	2014	43.8	39.3	37.1	36.6	43.2
7	2012	42.3	43.1	42.6	32.6	39.5
	2013	38.4	45.2	40.5	30.5	34.8
	2014	52.5	40.8	35.3	33.4	46.1
8	2012	41.3	37.2	35.5	37.2	49.0
	2013	44.0	42.1	41.3	34.8	35.1
	2014	45.0	42.7	42.3	38.6	50.8
6-8	2012	41.7	43.1	41.5	37.7	44.3
	2013	43.1	44.0	40.3	33.1	39.8
	2014	47.2	40.8	38.0	36.1	46.5

PERCENTAGE SATISFACTORY (Levels 2 or 3)

Test	Year	White	African Amer	Hispanic	Econ Disadv	Special Educ	LEP	At Risk	Migrant	Male	Female	All	District
ALGEBRA I (GRADE 8)	2012		100.0	85.7	93.8			100.0		100.0	92.3	95.5	94.1
	2013	*	88.2	77.8	84.6		*	87.5		88.2	80.0	85.2	95.4
	2014		94.1	*	95.0		*	*		81.8	100.0	91.3	97.2
Tests Taken	2012		15	7	16			8		9	13	22	2,554
	2013	1	17	9	26		1	8		17	10	27	2,474
	2014		17	5	20		2	5		11	12	23	2,117

NUMBER UNSATISFACTORY (Level 1)

Test	Year	White	African Amer	Hispanic	Econ Disadv	Special Educ	LEP	At Risk	Migrant	Male	Female	All	District
ALGEBRA I (GRADE 8)	2012		0	1	1			0		0	1	1	151
	2013	*	2	2	4		*	1		2	2	4	115
	2014		1	*	1		*	*		2	0	2	60
Tests Taken	2012		15	7	16			8		9	13	22	2,554
	2013	1	17	9	26		1	8		17	10	27	2,474
	2014		17	5	20		2	5		11	12	23	2,117

PERCENTAGE ADVANCED (Level 3)

Test	Year	White	African Amer	Hispanic	Econ Disadv	Special Educ	LEP	At Risk	Migrant	Male	Female	All	District
ALGEBRA I (GRADE 8)	2012		26.7	14.3	25.0			0.0		33.3	15.4	22.7	19.0
	2013	*	5.9	11.1	3.8		*	0.0		11.8	0.0	7.4	24.2
	2014		5.9	*	5.0		*	*		9.1	0.0	4.3	28.8
Tests Taken	2012		15	7	16			7		9	13	22	2,554
	2013	1	17	9	26		1	8		17	10	27	2,474
	2014		17	5	20		2	5		11	12	23	2,117

AVERAGE PERCENTAGE OF ITEMS CORRECT BY REPORTING CATEGORY

ALGEBRA I (GRADE 8)	1. Functional Relationships	2. Properties and Attributes of Functions	3. Linear Functions	4. Linear Equations and Inequalities	5. Quadratic and Other Nonlinear Functions
2012	66.5	55.3	60.3	60.5	53.0
2013	55.6	54.0	49.1	53.3	57.2
2014	48.9	48.2	58.0	56.5	44.9

PERCENTAGE SATISFACTORY (Levels 2 or 3)

Grade	Year	White	African Amer	Hispanic	Econ Disadv	Special Educ	LEP	At Risk	Migrant	Male	Female	All	District	Number Tested (All Students)
8	2012		16.0	59.3	23.9	0.0	36.4	10.7		25.0	25.5	25.2	54.0	127
	2013	*	47.4	58.6	49.5	*	54.5	36.2		52.5	46.8	50.0	65.8	108
	2014	*	40.3	52.2	45.2	18.8	44.2	34.6		48.2	40.9	44.5	61.9	220

NUMBER TESTED IN GRADE 8													
2012		100	27	113	10	11	84		72	55	127	9,431	
2013	2	76	29	105	4	11	58		61	47	108	8,998	
2014	1	149	69	177	16	43	162		110	110	220	9,466	

NUMBER UNSATISFACTORY (Level 1)

Grade	Year	White	African Amer	Hispanic	Econ Disadv	Special Educ	LEP	At Risk	Migrant	Male	Female	All	District	Number Tested (All Students)
8	2012		84	11	86	10	7	75		54	41	95	4335	127
	2013	*	40	12	53	*	5	37		29	25	54	3074	108
	2014	*	89	33	97	13	24	106		57	65	122	3605	220

NUMBER TESTED IN GRADE 8													
2012		100	27	113	10	11	84		72	55	127	9,431	
2013	2	76	29	105	4	11	58		61	47	108	8,998	
2014	1	149	69	177	16	43	162		110	110	220	9,466	

PERCENTAGE ADVANCED (Level 3)

Grade	Year	White	African Amer	Hispanic	Econ Disadv	Special Educ	LEP	At Risk	Migrant	Male	Female	All	District	Number Tested (All Students)
8	2012		0.0	0.0	0.0	0.0	0.0	0.0		0.0	0.0	0.0	4.2	127
	2013	*	0.0	0.0	0.0	*	0.0	0.0		0.0	0.0	0.0	7.1	108
	2014	*	0.7	0.0	1.1	0.0	0.0	0.0		0.9	0.9	0.9	11.3	220

NUMBER TESTED IN GRADE 8													
2012		100	27	113	10	11	84		72	55	127	9,431	
2013	2	76	29	105	4	11	58		61	47	108	8,998	
2014	1	149	69	177	16	43	162		110	110	220	9,466	

AVERAGE PERCENTAGE OF ITEMS CORRECT BY REPORTING CATEGORY

Grade	Year	REPORTING CATEGORY			
		1. Matter and Energy	2. Force, Motion, and Energy	3. Earth and Space	4. Organisms and Environments
8	2012	40.1	48.2	45.6	51.9
	2013	52.0	50.7	46.0	49.6
	2014	48.1	52.9	44.7	62.1

PERCENTAGE SATISFACTORY (Levels 2 or 3)

Grade	Year	White	African Amer	Hispanic	Econ Disadv	Special Educ	LEP	At Risk	Migrant	Male	Female	All	District	Number Tested (All Students)
8	2012		30.0	25.9	26.5	0.0	18.2	19.0		30.6	27.3	29.1	52.5	127
	2013	*	53.9	62.1	54.3	*	54.5	39.7		54.1	57.4	55.6	59.3	108
	2014	*	34.5	31.9	36.4	0.0	25.6	26.7		33.0	35.5	34.2	53.5	219

NUMBER TESTED IN GRADE 8													
2012		100	27	113	10	11	84		72	55	127	9,392	
2013	2	76	29	105	4	11	58		61	47	108	8,991	
2014	1	148	69	176	16	43	161		109	110	219	9,464	

NUMBER UNSATISFACTORY (Level 1)

Grade	Year	White	African Amer	Hispanic	Econ Disadv	Special Educ	LEP	At Risk	Migrant	Male	Female	All	District	Number Tested (All Students)
8	2012		70	20	83	10	9	68		50	40	90	4462	127
	2013	*	35	11	48	*	5	35		28	20	48	3656	108
	2014	*	97	47	112	16	32	118		73	71	144	4402	219

NUMBER TESTED IN GRADE8													
2012		100	27	113	10	11	84		72	55	127	9,392	
2013	2	76	29	105	4	11	58		61	47	108	8,991	
2014	1	148	69	176	16	43	161		109	110	219	9,464	

PERCENTAGE ADVANCED (Level 3)

Grade	Year	White	African Amer	Hispanic	Econ Disadv	Special Educ	LEP	At Risk	Migrant	Male	Female	All	District	Number Tested (All Students)
8	2012		1.0	0.0	0.9	0.0	0.0	0.0		1.4	0.0	0.8	7.1	127
	2013	*	5.3	0.0	1.9	*	0.0	0.0		4.9	2.1	3.7	8.8	108
	2014	*	0.0	0.0	0.0	0.0	0.0	0.0		0.0	0.0	0.0	7.3	219

NUMBER TESTED IN GRADE 8													
2012		100	27	113	10	11	84		72	55	127	9,392	
2013	2	76	29	105	4	11	58		61	47	108	8,991	
2014	1	148	69	176	16	43	161		109	110	219	9,464	

AVERAGE PERCENTAGE OF ITEMS CORRECT BY REPORTING CATEGORY

Grade	Year	REPORTING CATEGORY			
		1. History	2. Geography and Culture	3. Government and Citizenship	4. Economics, Science, Technology, and Society
8	2012	38.9	47.6	40.6	36.0
	2013	56.5	60.1	43.3	44.9
	2014	46.1	39.0	43.2	47.7

PERCENTAGE SATISFACTORY (Levels 2 or 3)

Grade	Year	White	African Amer	Hispanic	Econ Disadv	Special Educ	LEP	At Risk	Migrant	Male	Female	All	District	Number Tested (All Students)
6	2012												22.8	0
	2013												30.6	0
	2014			*	*		*	*		*		*	29.0	3
7	2012												16.9	0
	2013			*	*		*				*	*	24.3	1
	2014			*			*	*		*	*	*	24.8	3
8	2012												0.0	0
	2013												25.5	0
	2014			*	*		*	*	*	*	*	*	33.2	3
6-8	2012												12.7	0
	2013			*	*		*				*	*	26.8	1
	2014			11.1	16.7		11.1	12.5	*	0.0	*	11.1	29.1	9

NUMBER TESTED IN GRADES 6-8														
2012														620
2013			1	1			1				1	1		634
2014			9	6			9	8	3	6	3	9		722

NUMBER UNSATISFACTORY (Level 1)

Grade	Year	White	African Amer	Hispanic	Econ Disadv	Special Educ	LEP	At Risk	Migrant	Male	Female	All	District	Number Tested (All Students)
6	2012												146	0
	2013												150	0
	2014			*	*		*	*		*		*	171	3
7	2012												177	0
	2013			*	*		*				*	*	162	1
	2014			*			*	*		*	*	*	176	3
8	2012												218	0
	2013												152	0
	2014			*	*		*	*	*	*	*	*	165	3
6-8	2012												541	0
	2013			*	*		*				*	*	464	1
	2014			8	5		8	7	*	6	*	8	512	9

NUMBER TESTED IN GRADES 6-8														
2012														620
2013			1	1			1				1	1		634
2014			9	6			9	8	3	6	3	9		722

PERCENTAGE ADVANCED (Level 3)

Grade	Year	White	African Amer	Hispanic	Econ Disadv	Special Educ	LEP	At Risk	Migrant	Male	Female	All	District	Number Tested (All Students)
6	2012												1.1	0
	2013												2.3	0
	2014			*	*		*	*		*		*	3.3	3
7	2012												0.0	0
	2013			*	*		*				*	*	0.9	1
	2014			*			*	*		*	*	*	0.0	3
8	2012												0.0	0
	2013												0.0	0
	2014			*	*		*	*	*	*	*	*	0.4	3
6-8	2012												0.3	0
	2013			*	*		*				*	*	1.1	1
	2014			0.0	0.0		0.0	0.0	*	0.0	*	0.0	1.2	9

NUMBER TESTED IN GRADE 6-8														
2012														620
2013			1	1			1				1	1		634
2014			9	6			9	8	3	6	3	9		722

AVERAGE PERCENTAGE OF ITEMS CORRECT BY REPORTING CATEGORY

Grade	Year	REPORTING CATEGORY				
		1. Numbers, Operations, and Quantitative Reasoning	2. Patterns, Relationships, and Algebraic Reasoning	3. Geometry and Spatial Reasoning	4. Measurement	5. Probability and Statistics
6	2012					
	2013					
	2014	*	*	*	*	*
7	2012					
	2013	*	*	*	*	*
	2014	*	*	*	*	*
8	2012					
	2013					
	2014	*	*	*	*	*
6-8	2012					
	2013	*	*	*	*	*
	2014	38.9	26.3	24.4	29.2	25.6

PERCENTAGE SATISFACTORY (Levels 2 or 3)

Grade	Year	White	African Amer	Hispanic	Econ Disadv	Special Educ	LEP	At Risk	Migrant	Male	Female	All	District	Number Tested (All Students)
6	2012		*	*	*	*		*		*	*	*	65.5	4
	2013		63.6	*	58.3	58.3		57.1		50.0	66.7	58.3	55.9	12
	2014		52.9	60.0	57.7	55.6	71.4	57.9		50.0	71.4	55.6	51.6	27
7	2012		66.7	*	50.0	57.1	*	57.1		*	*	57.1	57.3	7
	2013		*	*	66.7	66.7	*	66.7		*	*	66.7	61.0	6
	2014		52.9	50.0	47.4	52.2	*	45.0		43.8	71.4	52.2	55.4	23
8	2012		*		*	*		*		*	*	*	58.0	5
	2013		*	*	*	*	*	*		*	*	*	74.5	5
	2014		73.7	*	72.7	75.0	*	72.2		64.3	90.0	75.0	75.0	24
6-8	2012		57.1	*	50.0	50.0	*	50.0		12.5	87.5	50.0	60.3	16
	2013		70.0	*	65.2	65.2	*	66.7		45.5	83.3	65.2	63.6	23
	2014		60.4	61.9	59.7	60.8	69.2	57.9		52.0	79.2	60.8	60.0	74

NUMBER TESTED IN GRADES 6-8													
2012		14	2	12	16	1	14		8	8	16	1,571	
2013		20	3	23	23	2	18		11	12	23	1,687	
2014		53	21	67	74	13	57		50	24	74	1,689	

NUMBER UNSATISFACTORY (Level 1)

Grade	Year	White	African Amer	Hispanic	Econ Disadv	Special Educ	LEP	At Risk	Migrant	Male	Female	All	District	Number Tested (All Students)
6	2012		*	*	*	*		*		*	*	*	181	4
	2013		4	*	5	5		3		3	2	5	270	12
	2014		8	4	11	12	2	8		10	2	12	281	27
7	2012		2	*	3	3	*	3		*	*	3	244	7
	2013		*	*	2	2	*	2		*	*	2	202	6
	2014		8	3	10	11	*	11		9	2	11	266	23
8	2012		*		*	*		*		*	*	*	199	5
	2013		*	*	*	*	*	*		*	*	*	142	5
	2014		5	*	6	6	*	5		5	1	6	128	24
6-8	2012		6	*	6	8	*	7		7	1	8	624	16
	2013		6	*	8	8	*	6		6	2	8	614	23
	2014		21	8	27	29	4	24		24	5	29	675	74

NUMBER TESTED IN GRADES 6-8													
2012		14	2	12	16	1	14		8	8	16	1,571	
2013		20	3	23	23	2	18		11	12	23	1,687	
2014		53	21	67	74	13	57		50	24	74	1,689	

PERCENTAGE ADVANCED (Level 3)

Grade	Year	White	African Amer	Hispanic	Econ Disadv	Special Educ	LEP	At Risk	Migrant	Male	Female	All	District	Number Tested (All Students)
6	2012		*	*	*	*		*		*	*	*	3.6	4
	2013		0.0	*	0.0	0.0		0.0		0.0	0.0	0.0	3.1	12
	2014		5.9	0.0	3.8	3.7	0.0	5.3		0.0	14.3	3.7	2.9	27
7	2012		0.0	*	0.0	0.0	*	0.0		*	*	0.0	1.0	7
	2013		*	*	16.7	16.7	*	16.7		*	*	16.7	3.5	6
	2014		0.0	0.0	0.0	0.0	*	0.0		0.0	0.0	0.0	3.9	23
8	2012		*		*	*		*		*	*	*	1.1	5
	2013		*	*	*	*	*	*		*	*	*	2.5	5
	2014		26.3	*	18.2	20.8	*	16.7		21.4	20.0	20.8	2.9	24
6-8	2012		0.0	*	0.0	0.0	*	0.0		0.0	0.0	0.0	1.9	16
	2013		5.0	*	4.3	4.3	*	5.6		0.0	8.3	4.3	3.0	23
	2014		11.3	0.0	7.5	8.1	0.0	7.0		6.0	12.5	8.1	3.3	74

NUMBER TESTED IN GRADE 6-8													
2012		14	2	12	16	1	14		8	8	16	1,571	
2013		20	3	23	23	2	18		11	12	23	1,687	
2014		53	21	67	74	13	57		50	24	74	1,689	

AVERAGE PERCENTAGE OF ITEMS CORRECT BY REPORTING CATEGORY

Grade	Year	REPORTING CATEGORY		
		1. Understanding Across Genres (GR 3-5) 1. Understanding/Analysis Across Genres (GR 6-8)	2. Understanding/Analysis of Literary Texts	3. Understanding/Analysis of Informational Texts
6	2012	*	*	*
	2013	42.7	49.0	50.0
	2014	52.3	50.7	51.3
7	2012	60.7	52.1	44.8
	2013	70.8	63.7	56.7
	2014	40.2	49.4	45.8
8	2012	*	*	*
	2013	*	*	*
	2014	66.7	63.7	62.5
6-8	2012	58.6	53.7	46.0
	2013	52.7	54.5	54.7
	2014	53.2	54.5	53.2

PERCENTAGE SATISFACTORY (Levels 2 or 3)

Grade	Year	White	African Amer	Hispanic	Econ Disadv	Special Educ	LEP	At Risk	Migrant	Male	Female	All	District	Number Tested (All Students)
7	2012		83.3	*	66.7	71.4	*	71.4		*	*	71.4	56.7	7
	2013		*	*	66.7	66.7	*	66.7		*	*	66.7	63.7	6
	2014		35.3	83.3	47.4	47.8	*	40.0		37.5	71.4	47.8	62.9	23

NUMBER TESTED IN GRADE 7													
2012		6	1	6	7	1	7		2	5	7	586	
2013		5	1	6	6	1	6		3	3	6	509	
2014		17	6	19	23	3	20		16	7	23	599	

NUMBER UNSATISFACTORY (Level 1)

Grade	Year	White	African Amer	Hispanic	Econ Disadv	Special Educ	LEP	At Risk	Migrant	Male	Female	All	District	Number Tested (All Students)
7	2012		1	*	2	2	*	2		*	*	2	254	7
	2013		*	*	2	2	*	2		*	*	2	185	6
	2014		11	1	10	12	*	12		10	2	12	222	23

NUMBER TESTED IN GRADE 7													
2012		6	1	6	7	1	7		2	5	7	586	
2013		5	1	6	6	1	6		3	3	6	509	
2014		17	6	19	23	3	20		16	7	23	599	

PERCENTAGE ADVANCED (Level 3)

Grade	Year	White	African Amer	Hispanic	Econ Disadv	Special Educ	LEP	At Risk	Migrant	Male	Female	All	District	Number Tested (All Students)
7	2012		16.7	*	0.0	14.3	*	14.3		*	*	14.3	2.7	7
	2013		*	*	0.0	0.0	*	0.0		*	*	0.0	6.3	6
	2014		5.9	0.0	0.0	4.3	*	5.0		0.0	14.3	4.3	6.3	23

NUMBER TESTED IN GRADE 7													
2012		6	1	6	7	1	7		2	5	7	586	
2013		5	1	6	6	1	6		3	3	6	509	
2014		17	6	19	23	3	20		16	7	23	599	

AVERAGE PERCENTAGE OF ITEMS CORRECT BY REPORTING CATEGORY

Grade	Year	REPORTING CATEGORY		
		1. Composition ¹ GR 4: Personal Narrative GR 7: Expository	2. Revision	3. Editing
7	2012	1.1	56.0	58.6
	2013	1.5	67.9	50.9
	2014	2.3	52.8	47.4

¹Average score points (range 0-6). A STAAR M composition is rated twice on a scale of 0 to 3, and the ratings are summed to determine score points for the composition. Score point scale: 0=Non-scorable; 2=Very Limited; 3=between Very Limited and Basic; 4=Basic; 5=between Basic and Satisfactory; 6=Satisfactory

PERCENTAGE SATISFACTORY (Levels 2 or 3)

Grade	Year	White	African Amer	Hispanic	Econ Disadv	Special Educ	LEP	At Risk	Migrant	Male	Female	All	District	Number Tested (All Students)
6	2012		*	*	*	*		*		*	*	*	46.2	4
	2013		18.2	*	16.7	16.7		14.3		16.7	16.7	16.7	54.3	12
	2014		58.8	50.0	57.7	55.6	71.4	47.4		55.0	57.1	55.6	52.0	27
7	2012		16.7	*	16.7	14.3	*	14.3		*	*	14.3	50.5	7
	2013		*	*	16.7	16.7	*	16.7		*	*	16.7	49.4	6
	2014		23.5	33.3	15.8	26.1	*	25.0		31.3	14.3	26.1	48.8	23
8	2012		*		*	*		*		*	*	*	46.2	5
	2013		*	*	*	*	*	*		*	*	*	71.4	5
	2014		63.2	*	63.6	66.7	*	66.7		57.1	80.0	66.7	71.0	24
6-8	2012		14.3	*	16.7	12.5	*	7.1		12.5	12.5	12.5	47.7	16
	2013		15.0	*	17.4	17.4	*	16.7		18.2	16.7	17.4	58.5	23
	2014		49.1	52.4	47.8	50.0	61.5	45.6		48.0	54.2	50.0	56.7	74

NUMBER TESTED IN GRADES 6-8													
2012		14	2	12	16	1	14		8	8	16	1,554	
2013		20	3	23	23	2	18		11	12	23	1,659	
2014		53	21	67	74	13	57		50	24	74	1,684	

NUMBER UNSATISFACTORY (Level 1)

Grade	Year	White	African Amer	Hispanic	Econ Disadv	Special Educ	LEP	At Risk	Migrant	Male	Female	All	District	Number Tested (All Students)
6	2012		*	*	*	*		*		*	*	*	276	4
	2013		9	*	10	10		6		5	5	10	272	12
	2014		7	5	11	12	2	10		9	3	12	271	27
7	2012		5	*	5	6	*	6		*	*	6	276	7
	2013		*	*	5	5	*	5		*	*	5	257	6
	2014		13	4	16	17	*	15		11	6	17	310	23
8	2012		*		*	*		*		*	*	*	260	5
	2013		*	*	*	*	*	*		*	*	*	159	5
	2014		7	*	8	8	*	6		6	2	8	149	24
6-8	2012		12	*	10	14	*	13		7	7	14	812	16
	2013		17	*	19	19	*	15		9	10	19	688	23
	2014		27	10	35	37	5	31		26	11	37	730	74

NUMBER TESTED IN GRADES 6-8													
2012		14	2	12	16	1	14		8	8	16	1,554	
2013		20	3	23	23	2	18		11	12	23	1,659	
2014		53	21	67	74	13	57		50	24	74	1,684	

PERCENTAGE ADVANCED (Level 3)

Grade	Year	White	African Amer	Hispanic	Econ Disadv	Special Educ	LEP	At Risk	Migrant	Male	Female	All	District	Number Tested (All Students)
6	2012		*	*	*	*		*		*	*	*	5.5	4
	2013		0.0	*	0.0	0.0		0.0		0.0	0.0	0.0	4.9	12
	2014		0.0	10.0	3.8	3.7	14.3	5.3		0.0	14.3	3.7	3.4	27
7	2012		0.0	*	0.0	0.0	*	0.0		*	*	0.0	1.1	7
	2013		*	*	0.0	0.0	*	0.0		*	*	0.0	3.0	6
	2014		0.0	0.0	0.0	0.0	*	0.0		0.0	0.0	0.0	2.3	23
8	2012		*		*	*		*		*	*	*	1.2	5
	2013		*	*	*	*	*	*		*	*	*	2.2	5
	2014		0.0	*	0.0	0.0	*	0.0		0.0	0.0	0.0	1.9	24
6-8	2012		0.0	*	0.0	0.0	*	0.0		0.0	0.0	0.0	2.6	16
	2013		0.0	*	0.0	0.0	*	0.0		0.0	0.0	0.0	3.4	23
	2014		0.0	4.8	1.5	1.4	7.7	1.8		0.0	4.2	1.4	2.6	74

NUMBER TESTED IN GRADE 6-8													
2012		14	2	12	16	1	14		8	8	16	1,554	
2013		20	3	23	23	2	18		11	12	23	1,659	
2014		53	21	67	74	13	57		50	24	74	1,684	

AVERAGE PERCENTAGE OF ITEMS CORRECT BY REPORTING CATEGORY

Grade	Year	REPORTING CATEGORY				
		1. Numbers, Operations, and Quantitative Reasoning	2. Patterns, Relationships, and Algebraic Reasoning	3. Geometry and Spatial Reasoning	4. Measurement	5. Probability and Statistics
6	2012	*	*	*	*	*
	2013	37.5	35.8	50.0	23.6	51.4
	2014	49.2	44.4	54.9	40.7	56.2
7	2012	35.1	34.3	19.6	33.3	42.9
	2013	31.8	38.3	45.8	22.2	39.6
	2014	36.4	33.9	37.0	39.9	35.9
8	2012	*	*	*	*	*
	2013	*	*	*	*	*
	2014	41.7	51.1	38.2	47.5	60.9
6-8	2012	31.1	35.1	25.3	30.0	44.8
	2013	35.7	37.0	44.6	27.7	45.8
	2014	42.8	43.3	43.9	42.7	51.4

PERCENTAGE SATISFACTORY (Levels 2 or 3)

Grade	Year	White	African Amer	Hispanic	Econ Disadv	Special Educ	LEP	At Risk	Migrant	Male	Female	All	District	Number Tested (All Students)
8	2012		*		*	*		*		*	*	*	58.2	5
	2013		*	*	*	*	*	*		*	*	*	59.3	5
	2014		38.9	*	47.6	47.8	*	44.4		38.5	60.0	47.8	63.5	23

NUMBER TESTED IN GRADE 8													
2012		5		3	5		4		3	2	5		457
2013		4	1	5	5	1	5		2	3	5		526
2014		18	5	21	23	3	18		13	10	23		474

NUMBER UNSATISFACTORY (Level 1)

Grade	Year	White	African Amer	Hispanic	Econ Disadv	Special Educ	LEP	At Risk	Migrant	Male	Female	All	District	Number Tested (All Students)
8	2012		*		*	*		*		*	*	*	191	5
	2013		*	*	*	*	*	*		*	*	*	214	5
	2014		11	*	11	12	*	10		8	4	12	173	23

NUMBER TESTED IN GRADE 8													
2012		5		3	5		4		3	2	5		457
2013		4	1	5	5	1	5		2	3	5		526
2014		18	5	21	23	3	18		13	10	23		474

PERCENTAGE ADVANCED (Level 3)

Grade	Year	White	African Amer	Hispanic	Econ Disadv	Special Educ	LEP	At Risk	Migrant	Male	Female	All	District	Number Tested (All Students)
8	2012		*		*	*		*		*	*	*	0.4	5
	2013		*	*	*	*	*	*		*	*	*	2.5	5
	2014		5.6	*	4.8	4.3	*	0.0		7.7	0.0	4.3	3.8	23

NUMBER TESTED IN GRADE 8													
2012		5		3	5		4		3	2	5		457
2013		4	1	5	5	1	5		2	3	5		526
2014		18	5	21	23	3	18		13	10	23		474

AVERAGE PERCENTAGE OF ITEMS CORRECT BY REPORTING CATEGORY

Grade	Year	REPORTING CATEGORY			
		1. Matter and Energy	2. Force, Motion, and Energy	3. Earth and Space	4. Organisms and Environments
8	2012	*	*	*	*
	2013	*	*	*	*
	2014	57.7	61.3	43.1	59.7

PERCENTAGE SATISFACTORY (Levels 2 or 3)

Grade	Year	White	African Amer	Hispanic	Econ Disadv	Special Educ	LEP	At Risk	Migrant	Male	Female	All	District	Number Tested (All Students)
8	2012		*		*	*		*		*	*	*	52.3	5
	2013		*	*	*	*	*	*		*	*	*	59.5	5
	2014		44.4	*	52.4	52.2	*	50.0		38.5	70.0	52.2	59.3	23

NUMBER TESTED IN GRADE 8													
2012		5		3	5		4		3	2	5		451
2013		4	1	5	5	1	5		2	3	5		516
2014		18	5	21	23	3	18		13	10	23		479

NUMBER UNSATISFACTORY (Level 1)

Grade	Year	White	African Amer	Hispanic	Econ Disadv	Special Educ	LEP	At Risk	Migrant	Male	Female	All	District	Number Tested (All Students)
8	2012		*		*	*		*		*	*	*	215	5
	2013		*	*	*	*	*	*		*	*	*	209	5
	2014		10	*	10	11	*	9		8	3	11	195	23

NUMBER TESTED IN GRADE8													
2012		5		3	5		4		3	2	5		451
2013		4	1	5	5	1	5		2	3	5		516
2014		18	5	21	23	3	18		13	10	23		479

PERCENTAGE ADVANCED (Level 3)

Grade	Year	White	African Amer	Hispanic	Econ Disadv	Special Educ	LEP	At Risk	Migrant	Male	Female	All	District	Number Tested (All Students)
8	2012		*		*	*		*		*	*	*	2.9	5
	2013		*	*	*	*	*	*		*	*	*	1.9	5
	2014		5.6	*	4.8	4.3	*	0.0		7.7	0.0	4.3	3.5	23

NUMBER TESTED IN GRADE 8													
2012		5		3	5		4		3	2	5		451
2013		4	1	5	5	1	5		2	3	5		516
2014		18	5	21	23	3	18		13	10	23		479

AVERAGE PERCENTAGE OF ITEMS CORRECT BY REPORTING CATEGORY

Grade	Year	REPORTING CATEGORY			
		1. History	2. Geography and Culture	3. Government and Citizenship	4. Economics, Science, Technology, and Society
8	2012	*	*	*	*
	2013	*	*	*	*
	2014	51.4	50.9	45.7	54.3

PERCENTAGE DEMONSTRATING IMPROVEMENT


Grade	Level 1 in 2013		Level 2 in 2013		Level 3 in 2013		Levels 1-3 in 2013	
	Number Tested Both Years	Percentage Improved in 2014	Number Tested Both Years	Percentage Improved in 2014	Number Tested Both Years	Percentage Improved in 2014	Number Tested Both Years	Percentage Improved in 2014
6	3	*	3	*	0		6	50.0
7	3	*	3	*	0		6	50.0
8	6	16.7	1	*	0		7	28.6
ALL	12	16.7	7	85.7	0		19	42.1

PERFORMANCE IN 2014

Grade 2013-14 (N Rated)	Domain:	Listening		Speaking		Writing		Reading		Composite	
	2014 Level	N	%	N	%	N	%	N	%	N	%
6 (52)	Beginning	1	1.9	1	1.9	2	3.8	8	15.4	2	3.8
	Intermediate	0	0.0	2	3.8	5	9.6	15	28.8	7	13.5
	Advanced	25	48.1	24	46.2	29	55.8	26	50.0	34	65.4
	Advanced High	26	50.0	25	48.1	16	30.8	3	5.8	9	17.3
7 (66)	Beginning	0	0.0	0	0.0	1	1.6	6	9.1	1	1.6
	Intermediate	9	14.5	18	29.0	24	38.7	17	25.8	13	21.0
	Advanced	33	53.2	28	45.2	21	33.9	24	36.4	33	53.2
	Advanced High	20	32.3	16	25.8	16	25.8	19	28.8	15	24.2
8 (52)	Beginning	3	6.1	3	6.1	3	6.1	7	13.5	1	2.0
	Intermediate	3	6.1	6	12.2	10	20.4	13	25.0	8	16.3
	Advanced	16	32.7	16	32.7	16	32.7	22	42.3	23	46.9
	Advanced High	27	55.1	24	49.0	20	40.8	10	19.2	17	34.7
ALL (170)	Beginning	4	2.5	4	2.5	6	3.7	21	12.4	4	2.5
	Intermediate	12	7.4	26	16.0	39	23.9	45	26.5	28	17.2
	Advanced	74	45.4	68	41.7	66	40.5	72	42.4	90	55.2
	Advanced High	73	44.8	65	39.9	52	31.9	32	18.8	41	25.2

**PROGRESSION FROM
2013 TO 2014**

Number Rated Both Years N (%) Progressed	2014 Level	2013 Level			
		Beg	Int	Adv	Adv High
48 13 (27.1%)	Beginning	1			
	Intermediate	0	7		
	Advanced	1	3	27	
	Advanced High	0	0	9	
50 15 (30.0%)	Beginning	1			
	Intermediate	0	9		
	Advanced	0	3	25	
	Advanced High	0	1	11	
42 19 (45.2%)	Beginning	0			
	Intermediate	1	5		
	Advanced	1	1	18	
	Advanced High	0	0	16	
140 47 (33.6%)	Beginning	2			
	Intermediate	1	21		
	Advanced	2	7	70	
	Advanced High	0	1	36	

 Indicates students who progressed at least one level from 2013 to 2014.

SEMESTER 1 TESTS

Number Tested	Averages				% Passing		District % Passing	
	% Items Correct	Scale Score	Course Mark	Course Mark (no ACP)	ACP	Course	ACP	Course

SPANISH I

145	51.1	67.4	79.2	80.5	40.7	89.2	71.3	91.2
-----	------	------	------	------	------	------	------	------

ALGEBRA I PRE-AP

27	49.8	66.5	73.0	73.7	33.3	77.8	65.2	96.3
----	------	------	------	------	------	------	------	------

ART 7

89	58.3	72.2	80.6	81.5	60.7	100.0	76.4	97.8
----	------	------	------	------	------	-------	------	------

INTERMEDIATE LANGUAGE ARTS 6 FOR ESL

12	67.9	78.6	82.6	83.0	83.3	91.7	47.4	92.1
----	------	------	------	------	------	------	------	------

LANGUAGE ARTS 6

199	45.7	67.4	80.5	82.0	43.2	94.4	51.1	88.5
-----	------	------	------	------	------	------	------	------

LANGUAGE ARTS 6 PRE-AP

37	54.1	65.6	82.2	84.0	48.6	94.6	79.1	98.0
----	------	------	------	------	------	------	------	------

LANGUAGE ARTS 7

210	43.5	69.7	79.1	80.1	48.6	94.2	52.3	86.0
-----	------	------	------	------	------	------	------	------

LANGUAGE ARTS 7 PRE-AP

30	60.0	73.3	84.3	85.5	66.7	100.0	72.1	96.8
----	------	------	------	------	------	-------	------	------

LANGUAGE ARTS 8

186	52.0	68.7	75.1	75.8	46.8	78.7	56.7	87.7
-----	------	------	------	------	------	------	------	------

LANGUAGE ARTS 8 PRE-AP

37	61.5	71.8	81.2	82.2	48.6	91.9	76.4	97.3
----	------	------	------	------	------	------	------	------

MATHEMATICS 6

212	26.7	66.2	75.9	77.0	19.8	91.6	45.6	86.2
-----	------	------	------	------	------	------	------	------

SEMESTER 2 TESTS

Number Tested	Averages				% Passing		District % Passing	
	% Items Correct	Scale Score	Course Mark	Course Mark (no ACP)	ACP	Course	ACP	Course

SPANISH I

124	57.4	71.6	76.7	77.1	54.8	77.1	72.9	84.3
-----	------	------	------	------	------	------	------	------

ALGEBRA I PRE-AP

--	--	--	--	--	--	--	--	--

ART 7

80	55.3	66.8	79.7	81.0	53.8	95.7	71.9	95.8
----	------	------	------	------	------	------	------	------

INTERMEDIATE LANGUAGE ARTS 6 FOR ESL

13	68.5	79.0	79.7	79.5	69.2	83.3	58.3	94.3
----	------	------	------	------	------	------	------	------

LANGUAGE ARTS 6

189	46.0	66.9	76.6	77.7	36.5	86.0	56.8	85.3
-----	------	------	------	------	------	------	------	------

LANGUAGE ARTS 6 PRE-AP

34	47.7	66.6	78.0	79.3	32.4	93.9	64.3	96.1
----	------	------	------	------	------	------	------	------

LANGUAGE ARTS 7

195	55.0	69.4	79.6	80.7	54.4	94.6	59.3	82.9
-----	------	------	------	------	------	------	------	------

LANGUAGE ARTS 7 PRE-AP

34	70.3	76.5	86.5	87.6	82.4	100.0	79.1	96.0
----	------	------	------	------	------	-------	------	------

LANGUAGE ARTS 8

171	59.5	71.7	77.4	78.0	66.7	85.9	72.6	85.9
-----	------	------	------	------	------	------	------	------

LANGUAGE ARTS 8 PRE-AP

36	55.2	70.1	81.1	82.3	63.9	100.0	75.8	96.8
----	------	------	------	------	------	-------	------	------

MATHEMATICS 6

193	33.1	66.0	74.5	75.5	24.4	88.0	42.2	81.1
-----	------	------	------	------	------	------	------	------

SEMESTER 1 TESTS

Number Tested	Averages				% Passing		District % Passing	
	% Items Correct	Scale Score	Course Mark	Course Mark (no ACP)	ACP	Course	ACP	Course

MATHEMATICS 6 PRE-AP

36	31.6	62.0	79.4	81.4	16.7	94.4	65.8	97.0
----	------	------	------	------	------	------	------	------

MATHEMATICS 7

213	36.4	69.2	78.2	79.2	48.4	91.5	49.3	84.8
-----	------	------	------	------	------	------	------	------

MATHEMATICS 7 PRE-AP

22	57.2	65.3	82.7	84.6	40.9	100.0	64.9	96.0
----	------	------	------	------	------	-------	------	------

MATHEMATICS 8

198	46.8	66.0	74.1	75.0	36.4	77.4	51.9	84.5
-----	------	------	------	------	------	------	------	------

MS HEALTH EDUCATION

110	53.7	71.1	76.1	76.7	60.0	86.0	70.0	92.0
-----	------	------	------	------	------	------	------	------

PHYSICAL EDUCATION 6

216	77.1	85.7	86.6	79.6	100.0	74.0	99.1
-----	------	------	------	------	-------	------	------

PHYSICAL EDUCATION 7 & 8

118	76.7	88.3	89.6	83.1	100.0	83.6	98.3
-----	------	------	------	------	-------	------	------

READING 6

242	54.2	67.3	75.6	76.5	50.8	85.4	56.3	90.6
-----	------	------	------	------	------	------	------	------

READING 8

--	--	--	--	--	--	--	--	--

READING MASTERY 7

18	39.0	63.4	70.9	71.7	16.7	76.5	50.3	84.6
----	------	------	------	------	------	------	------	------

READING MASTERY 8

24	48.9	66.7	72.9	73.6	37.5	75.0	63.1	85.0
----	------	------	------	------	------	------	------	------

SEMESTER 2 TESTS

Number Tested	Averages				% Passing		District % Passing	
	% Items Correct	Scale Score	Course Mark	Course Mark (no ACP)	ACP	Course	ACP	Course

MATHEMATICS 6 PRE-AP

42	46.5	63.5	78.2	79.8	31.0	97.6	72.1	95.6
----	------	------	------	------	------	------	------	------

MATHEMATICS 7

101	41.6	67.6	75.8	76.7	34.7	84.7	50.1	79.6
-----	------	------	------	------	------	------	------	------

MATHEMATICS 7 PRE-AP

23	47.6	61.6	78.0	79.8	13.0	100.0	70.9	96.1
----	------	------	------	------	------	-------	------	------

MATHEMATICS 8

192	42.7	65.7	73.8	74.7	30.7	71.2	51.9	85.4
-----	------	------	------	------	------	------	------	------

MS HEALTH EDUCATION

139	57.9	74.2	77.8	78.1	64.7	86.8	73.6	89.8
-----	------	------	------	------	------	------	------	------

PHYSICAL EDUCATION 6

253	69.4	82.8	84.2	54.2	100.0	82.8	99.0
-----	------	------	------	------	-------	------	------

PHYSICAL EDUCATION 7 & 8

152	75.0	84.2	85.2	74.3	100.0	88.6	97.2
-----	------	------	------	------	-------	------	------

READING 6

238	46.7	67.4	76.1	77.0	42.9	87.9	55.7	86.3
-----	------	------	------	------	------	------	------	------

READING 8

9	42.1	56.6	76.6	78.8	11.1	88.9	74.8	87.8
---	------	------	------	------	------	------	------	------

READING MASTERY 7

21	46.3	67.1	73.2	73.8	47.6	89.5	59.4	81.4
----	------	------	------	------	------	------	------	------

READING MASTERY 8

21	54.6	69.7	73.4	73.8	52.4	81.0	71.7	85.4
----	------	------	------	------	------	------	------	------

SEMESTER 1 TESTS

Number Tested	Averages				% Passing		District % Passing	
	% Items Correct	Scale Score	Course Mark	Course Mark (no ACP)	ACP	Course	ACP	Course

SCIENCE 6

246	49.1	69.5	72.3	72.6	52.0	67.9	59.9	91.6
-----	------	------	------	------	------	------	------	------

SCIENCE 7

237	50.4	69.6	78.1	79.1	48.9	83.3	51.0	85.7
-----	------	------	------	------	------	------	------	------

SCIENCE 7 PRE-AP

--	--	--	--	--	--	--	--	--

SCIENCE 8 & SCIENCE 8 PRE-AP

219	49.8	66.5	74.3	75.1	40.6	71.0	64.6	90.4
-----	------	------	------	------	------	------	------	------

SOCIAL STUDIES 6

247	45.7	66.1	73.9	74.7	32.8	77.7	42.8	90.4
-----	------	------	------	------	------	------	------	------

TECHNOLOGY APPLICATIONS

122	49.4	69.6	82.3	83.7	50.8	92.6	60.4	93.7
-----	------	------	------	------	------	------	------	------

TEXAS STUDIES 7

234	46.2	70.1	73.8	74.2	43.6	71.1	49.3	87.3
-----	------	------	------	------	------	------	------	------

TEXAS STUDIES 7 PRE-AP

8	53.1	64.8	77.8	79.2	37.5	75.0	68.1	97.3
---	------	------	------	------	------	------	------	------

U.S. STUDIES 8

206	41.5	66.2	75.1	76.1	33.0	81.3	50.5	85.9
-----	------	------	------	------	------	------	------	------

U.S. STUDIES 8 PRE-AP

18	67.9	76.0	82.2	82.9	88.9	94.4	70.3	97.8
----	------	------	------	------	------	------	------	------

SEMESTER 2 TESTS

Number Tested	Averages				% Passing		District % Passing	
	% Items Correct	Scale Score	Course Mark	Course Mark (no ACP)	ACP	Course	ACP	Course

SCIENCE 6

238	45.6	65.3	71.9	72.6	33.2	67.3	57.7	87.5
-----	------	------	------	------	------	------	------	------

SCIENCE 7

228	52.9	71.2	80.7	81.8	55.3	87.5	71.7	85.1
-----	------	------	------	------	------	------	------	------

SCIENCE 7 PRE-AP

1	*	*	*	*	*	*	81.2	*
---	---	---	---	---	---	---	------	---

SCIENCE 8 & SCIENCE 8 PRE-AP

219	48.1	63.8	72.8	73.7	27.9	67.0	64.5	88.8
-----	------	------	------	------	------	------	------	------

SOCIAL STUDIES 6

236	49.9	66.6	73.7	74.4	39.4	76.1	56.1	86.5
-----	------	------	------	------	------	------	------	------

TECHNOLOGY APPLICATIONS

121	53.1	71.3	82.3	83.5	55.4	92.5	65.5	89.7
-----	------	------	------	------	------	------	------	------

TEXAS STUDIES 7

221	44.8	70.4	76.9	77.7	49.3	84.0	59.9	84.9
-----	------	------	------	------	------	------	------	------

TEXAS STUDIES 7 PRE-AP

6	41.5	59.2	82.8	85.0	16.7	100.0	79.0	95.9
---	------	------	------	------	------	-------	------	------

U.S. STUDIES 8

199	51.4	67.6	76.3	77.2	41.7	82.8	54.3	84.4
-----	------	------	------	------	------	------	------	------

U.S. STUDIES 8 PRE-AP

20	68.8	72.4	84.2	85.4	55.0	100.0	69.5	95.0
----	------	------	------	------	------	-------	------	------