

DATA PACKET

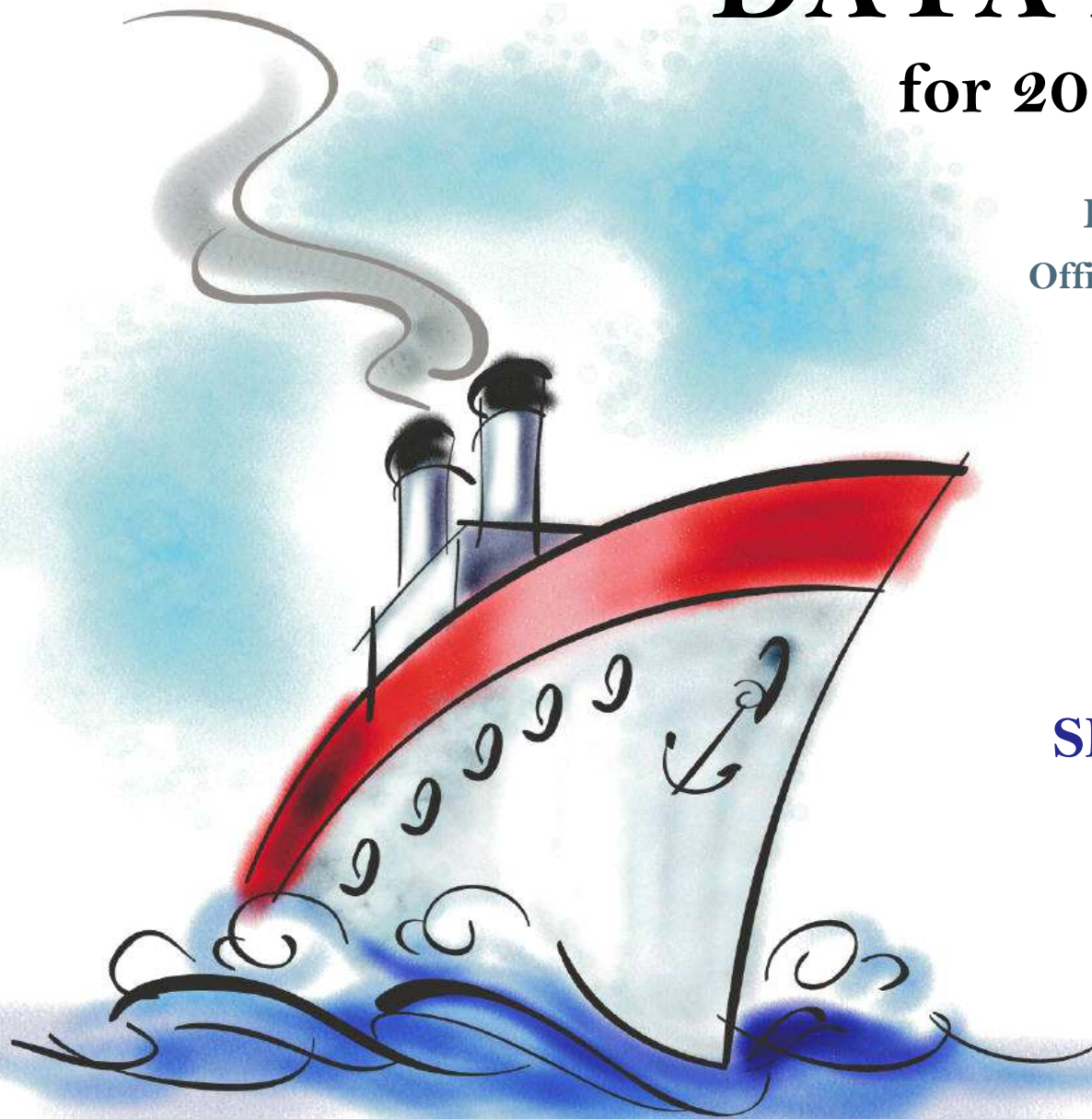
for 2014-15 planning

Evaluation & Assessment
Office of Institutional Research
<http://mydata.dallasisd.org>
OIR@dallasisd.org

September 9, 2014

School Number 840

**SKYLINE CAREER
DEVELOPMENT
CENTER**



Dallas Independent School District

2. Contents Table of Contents

STUDENTS AND STAFF

6. Summary Summary of Student and Teacher Statistics

8. Enroll (2) Enrollment Statistics by Select Student Group

STAAR (English)

10. Reading (EOC) .. STAAR EOC Reading

18. Science (EOC) ... STAAR EOC Science

ENGLISH PROFICIENCY

26. WMLS Woodcock-Muñoz Language Survey

COLLEGE READINESS

28. SAT/ACT SAT/ACT Average Scores for Seniors

30. AP Advanced Placement (AP) Exams

LOCAL ASSESSMENT

31. ACP Assessments of Course Performance

3. Notes Notes and Data Descriptions

7. Enroll (1) Enrollment Statistics by Ethnicity

9. Attendance Student Attendance Statistics

14. Math (EOC) STAAR EOC Mathematics

22. SS (EOC) STAAR EOC Social Studies

27. TELPAS Texas English Language Proficiency Assessment System

29. PSAT PSAT Average Scores

2013-14 SCHOOL SUMMARY

- Student percentages are computed as the percentage of total student enrollment.
- Additional statistics are available in ENROLLMENT and TEACHER reports.
- Race/ethnic categories are based on the newest federal standards for ethnicity and race reporting, though some categories have been combined because of small group sizes. Students reporting their ethnicity as “Hispanic” are not counted in any race category.
- “Economically disadvantaged” students are those who qualify for free or reduced-price lunch through the federal government's program.
- MAGNET PROGRAMS: Teacher statistics are not available for magnets, academies, or vanguards. See statistics for the whole campus.

ENROLLMENT

- Statistics are based on the school's enrollment at the end of the fifth six-weeks grading period.
- “Economically disadvantaged” students are those receiving free or reduced-price lunches.
- “New” students were new to the district in 2013-14. They are counted as new if not enrolled in a district campus before the last day of the 2012-13 school year.
- The “retention rate” is the percentage of students in the same grade at the end of the fifth six-weeks grading period for both 2012-13 and 2013-14.

ATTENDANCE

- Statistics are based on student attendance through the end of the sixth six-weeks grading period (the end of the school year).
- “Average daily membership” is the total number of school days students were ENROLLED divided by the number of school days in the year.
- The “average daily attendance” number (N) is the total number of school days students were IN ATTENDANCE divided by the number of school days in the year. The “average daily attendance” percentage (%) is the average attendance rate. For each student, the number of days attended is divided by the number of days enrolled. This rate is then averaged across students.
- The number (N) of “yearly transactions” is the total number of transfer and withdrawal transactions in the school year. The percentage (%) is the number of transactions divided by “average daily membership,” which gives (on average) the percentage of the membership associated with a transaction.
- “Continuously enrolled” students are enrolled and in attendance for a minimum number of instructional days in at least one course at the school between the beginning of the school year and the first day of the main STAAR testing period. The minimum number varies depending on the school year's calendar, but is typically around 130 days.
- The “stability rate” is the number of continuously enrolled students divided by “average daily membership.”

STAAR, STAAR L, and STAAR M

- Cells marked with an asterisk (*) indicate five or fewer students were tested. Blank cells indicate no students were tested.
- Student group assignments are from the district's Public Education Information Management System (PEIMS) submission to the TEA.
- STAAR statistics are based on results from standard STAAR only. STAAR L and STAAR M statistics are computed separately, following TEA reporting practice.
- “Percentage Satisfactory” is the percentage of students achieving Level 2 (Satisfactory) or Level 3 (Advanced).
- Statistics by reporting category are averages for all students (across student groups and genders).
- An “average percentage correct” is computed as follows: for each student, divide the number of items correctly answered by the total number of items in the test section, then average the resulting percentages across all students. For short answers on EOC English tests, an “average rating” is presented; STAAR EOC short answers are rated on a scale of 0 to 3. For written compositions on writing tests, “average score points” is presented. Additional details provided in report footnotes.
- EOC statistics are based on first administration scores from the fall and spring administrations.
- Beginning in 2014, EOC Reading and EOC Writing tests were replaced with EOC English tests.

TELPAS

- Students are counted as having tested if any one of the four domains is rated. Because a TELPAS composite rating is not assigned to a student unless all four domains are rated, the number of TELPAS composite ratings may be smaller than the number tested.
- If a student's composite rating did not increase at least one level from 2013 to 2014, the TEA did not report the 2013 composite rating.
- If a student is rated as advanced high in 2014, the TEA does not differentiate between the advanced and advanced high levels from 2013.

COLLEGE READINESS

- Cells marked with an asterisk (*) indicate five or fewer students were tested. Blank cells indicate no students were tested.
- For SAT and ACT, “Percent Tested” is computed with “Number Tested” as numerator and, as denominator, Grade 12 “Enrollment” as reported in Enrollment (1) and Enrollment (2) reports. For PSAT, the denominator for “Percent Tested” is grade-level enrollment as reported in Enrollment reports.
- Score summaries for SAT and ACT contain all scores available for the school year at the time of publication.
- The SAT and ACT are administered throughout the school year by The College Board and ACT, Inc. A student takes the SAT or ACT at the time and location of her choice, and she may take either test multiple times. If a student has results from multiple administrations, only the latest is used.
- SAT scores range from 200 to 800. ACT scores range from 0 to 36.
- SAT College and Career Readiness Benchmarks are the same for each subject (critical reading, mathematics, and writing): 500. The SAT benchmark indicates a 65 percent likelihood of achieving a B- average or higher during the first year of college. ACT's College Readiness Benchmarks are the minimum scores that indicate a 50 percent chance of earning a B or better (and 75 percent chance of earning a C or better) in the corresponding college course. The ACT benchmarks are available for four subject-area tests. They are English: 18, reading: 21, mathematics: 22, and science: 24.
- PSAT scores range from 20 to 80. PSAT is administered once each year in October. District students taking PSAT are tested at their schools. Statistics for a grade level are based on all students in that grade level in the fall with a PSAT score for that year. (Students' scores will be used in multiple statistics if they took the PSAT in multiple years.)
- PSAT/NMSQT College and Career Readiness Benchmarks are the scores associated with a 65 percent likelihood of achieving a B- first-year college GPA. The College Board has determined PSAT benchmark scores separately for grades 10 and 11 in each subject. For grade 10, the benchmarks are critical reading: 42, mathematics: 44, writing: 42. For grade 11, the benchmarks are critical reading: 45, mathematics: 47, writing: 45. There are no benchmarks for grade 9.
- AP scores range from 1 to 5; a minimum of 3 is needed to pass.

ACP

- Cells marked with an asterisk (*) indicate five or fewer students were tested. Blank cells indicate no students were tested.
- The ACPs are semester exams administered in grades K-12. Not all courses have ACPs. In MIDDLE and HIGH school, ACP results account for a portion of students' final semester grades (10% and 15% respectively). “Average course mark (no ACP)” is computed from semester grades before factoring in ACP scores. In ELEMENTARY school, ACP results account for 5% of students' semester grades for core courses; course-grade statistics are not reported in data packets for elementary grades.
- Raw scores on the ACPs (percentage of items correct) are scaled each year to maintain similar annual passing rates for the district.
- A scale score of at least 70 percent is required to pass an ACP. A course mark of at least 70 percent is required to pass a course.
- Statistics are computed separately for Semester 1 and Semester 2 tests; time of administration during the school year is not relevant. Results from tests written for different school years are not combined.

STUDENT ENROLLMENT

Grade	Enrollment
9	591
10	605
11	469
12	389
ALL	2,054

STUDENT AND TEACHER RACE/ETHNICITY

Ethnicity/Race	Students		Teachers*	
	Number	Percent	Number	Percent
Black/African American	360	17.5		
American Indian/Alaska Native	17	0.8		
Asian/Hawaiian/Pacific Islander	17	0.8		
Hispanic	1,621	78.9		
White	27	1.3		
Multiple	8	0.4		
Other* (teachers only)	—	—		
Not reported (students only)	0	0.0		

*Teacher statistics not available separately for magnets, academies, or vanguards.

SELECT STUDENT GROUP ENROLLMENT

Group	Number	Percent
At-Risk	1,131	55.1
Economically disadvantaged	1,655	80.6
Limited English proficient (LEP)	170	8.3
Special education	27	1.3
Talented and Gifted (TAG)	529	25.8

Grade	Year	Enrollment	African American		American Indian		Asian		Hispanic		White		Multiple category	
			N	%	N	%	N	%	N	%	N	%	N	%
9	2012	499	92	18.4	2	0.4	4	0.8	368	73.7	29	5.8	1	0.2
	2013	654	113	17.3	5	0.8	8	1.2	520	79.5	6	0.9	2	0.3
	2014	591	95	16.1	4	0.7	3	0.5	478	80.9	5	0.8	4	0.7
10	2012	439	90	20.5	5	1.1	4	0.9	334	76.1	3	0.7	2	0.5
	2013	509	93	18.3	3	0.6	3	0.6	379	74.5	27	5.3	1	0.2
	2014	605	103	17.0	5	0.8	8	1.3	484	80.0	3	0.5	2	0.3
11	2012	484	77	15.9	1	0.2	9	1.9	385	79.5	10	2.1	1	0.2
	2013	415	82	19.8	3	0.7	4	1.0	321	77.3	2	0.5	2	0.5
	2014	469	85	18.1	6	1.3	3	0.6	356	75.9	17	3.6	0	0.0
12	2012	458	95	20.7	1	0.2	5	1.1	352	76.9	4	0.9	1	0.2
	2013	485	76	15.7	2	0.4	8	1.6	388	80.0	10	2.1	1	0.2
	2014	389	77	19.8	2	0.5	3	0.8	303	77.9	2	0.5	2	0.5
9-12	2012	1,880	354	18.8	9	0.5	22	1.2	1,439	76.5	46	2.4	5	0.3
	2013	2,063	364	17.6	13	0.6	23	1.1	1,608	77.9	45	2.2	6	0.3
	2014	2,054	360	17.5	17	0.8	17	0.8	1,621	78.9	27	1.3	8	0.4

Grade	Year	Enrollment	Economically Disadvantaged		LEP		Special Education		At Risk		TAG		New (to District)		Gender		Retention Rate (%)
			N	%	N	%	N	%	N	%	N	%	N	%	% Male	% Female	
9	2012	499	423	84.8	40	8.0	6	1.2	149	29.9	152	30.5	70	14.0	49.1	50.9	0.2
	2013	654	560	85.6	87	13.3	12	1.8	267	40.8	157	24.0	76	11.6	46.3	53.7	0.0
	2014	591	506	85.6	69	11.7	6	1.0	293	49.6	179	30.3	62	10.5	48.1	51.9	0.3
10	2012	439	362	82.5	13	3.0	5	1.1	187	42.6	116	26.4	4	0.9	48.3	51.7	0.0
	2013	509	441	86.6	28	5.5	4	0.8	179	35.2	149	29.3	12	2.4	47.9	52.1	0.0
	2014	605	477	78.8	72	11.9	11	1.8	374	61.8	138	22.8	4	0.7	47.4	52.6	0.0
11	2012	484	394	81.4	20	4.1	7	1.4	205	42.4	134	27.7	2	0.4	48.3	51.7	0.2
	2013	415	338	81.4	9	2.2	6	1.4	213	51.3	95	22.9	5	1.2	47.5	52.5	0.0
	2014	469	371	79.1	24	5.1	4	0.9	263	56.1	133	28.4	0	0.0	48.4	51.6	0.0
12	2012	458	382	83.4	7	1.5	1	0.2	187	40.8	142	31.0	0	0.0	44.5	55.5	0.2
	2013	485	411	84.7	12	2.5	9	1.9	229	47.2	109	22.5	0	0.0	47.8	52.2	0.4
	2014	389	301	77.4	5	1.3	6	1.5	201	51.7	79	20.3	0	0.0	47.6	52.4	1.3
9-12	2012	1,880	1,561	83.0	80	4.3	19	1.0	728	38.7	544	28.9	76	4.0	47.6	52.4	0.2
	2013	2,063	1,750	84.8	136	6.6	31	1.5	888	43.0	510	24.7	93	4.5	47.3	52.7	0.1
	2014	2,054	1,655	80.6	170	8.3	27	1.3	1,131	55.1	529	25.8	66	3.2	47.9	52.1	0.3

Grade	Year	Average Daily Membership		Average Daily Attendance				Yearly Transactions			Continuously Enrolled		Stability Rate	
		N	District	N	%	District N	District %	N	%	District %	N	District	%	District
9	2012	486	10,922	472	97.1	10,196	93.3	4	0.8	27.8	485	8,726	99.8	79.9
	2013		11,153			10,499	94.1			28.3		9,388		84.2
	2014	570	10,850	552	96.9	10,242	94.4	13	2.3	28.4	560	9,091	98.3	83.8
10	2012	430	9,007	416	96.7	8,431	93.6	4	0.9	20.6	422	7,332	98.2	81.4
	2013		9,331			8,812	94.4			20.5		8,042		86.2
	2014	603	9,898	587	97.5	9,367	94.6	6	1.0	20.3	601	8,628	99.7	87.2
11	2012	480	8,913	464	96.6	8,306	93.2	4	0.8	15.9	465	7,319	96.9	82.1
	2013	6	8,457	6	93.4	7,949	94.0	3	50.0	18.9	5	7,295	83.3	86.3
	2014	470	8,467	456	97.0	8,005	94.5	4	0.9	18.1	466	7,476	99.2	88.3
12	2012	442	8,178	423	95.8	7,571	92.6	5	1.1	12.6	429	6,742	97.1	82.4
	2013	5	8,199	5	97.6	7,661	93.4	11	100.0	14.9	5	7,269	100.0	88.7
	2014	381	7,886	365	95.7	7,407	93.9	3	0.8	15.2	379	7,027	99.5	89.1
9-12	2012	1,838	37,021	1,775	96.6	34,504	93.2	17	0.9	19.8	1,801	30,119	98.0	81.4
	2013	11	37,140	10	95.3	34,922	94.0	20	100.0	21.2	10	31,994	93.9	86.1
	2014	2,023	37,101	1,960	96.9	35,021	94.4	26	1.3	21.1	2,006	32,222	99.2	86.8

PERCENTAGE SATISFACTORY (Levels 2 and 3)

Test	Year	White	African Amer	Hispanic	Econ Disadv	Special Educ	LEP	At Risk	Migrant	Male	Female	All	District
ENGLISH I	2012												
	2013												
	2014	*	81.6	81.1	81.3	33.3	56.5	62.6		76.1	87.0	81.7	50.9
Tests Taken	2012												
	2013												
	2014	4	98	508	536	12	85	222		301	323	624	13,789
ENGLISH II	2012												
	2013												
	2014	*	74.8	76.8	76.0	23.1	49.3	60.8		72.3	80.7	76.8	54.8
Tests Taken	2012												
	2013												
	2014	3	111	499	491	13	73	314		296	332	628	10,943

NUMBER UNSATISFACTORY (Level 1)

Test	Year	White	African Amer	Hispanic	Econ Disadv	Special Educ	LEP	At Risk	Migrant	Male	Female	All	District
ENGLISH I	2012												
	2013												
	2014	*	18	96	100	8	37	83		72	42	114	6,774
Tests Taken	2012												
	2013												
	2014	4	98	508	536	12	85	222		301	323	624	13,789
ENGLISH II	2012												
	2013												
	2014	*	28	116	118	10	37	123		82	64	146	4,948
Tests Taken	2012												
	2013												
	2014	3	111	499	491	13	73	314		296	332	628	10,943

PERCENTAGE ADVANCED (Level 3)

Test	Year	White	African Amer	Hispanic	Econ Disadv	Special Educ	LEP	At Risk	Migrant	Male	Female	All	District
ENGLISH I	2012												
	2013												
	2014	*	3.1	1.8	2.2	0.0	0.0	0.5		0.7	3.7	2.2	3.2
Tests Taken	2012												
	2013												
	2014	4	98	508	536	12	85	222		301	323	624	13,789
ENGLISH II	2012												
	2013												
	2014	*	0.9	1.8	1.4	0.0	1.4	0.3		0.3	2.7	1.6	2.7
Tests Taken	2012												
	2013												
	2014	3	111	499	491	13	73	314		296	332	628	10,943

AVERAGE PERCENTAGE OF ITEMS CORRECT BY REPORTING CATEGORY

ENGLISH I	1. Understanding & Analysis Across Genres	1. Average Rating Short Answer #1 ¹	1. Average Rating Short Answer #2 ¹	2. Understanding & Analysis of Literary Texts	3. Understanding & Analysis of Informational Texts	4. Expository Composition ²	5. Revision	6. Editing
2012								
2013								
2014	72.8	1.2	1.3	70.4	72.4	4.5	77.2	65.7

ENGLISH II	1. Understanding & Analysis Across Genres	1. Average Rating Short Answer #1 ¹	1. Average Rating Short Answer #2 ¹	2. Understanding & Analysis of Literary Texts	3. Understanding & Analysis of Informational Texts	4. Persuasive Composition ²	5. Revision	6. Editing
2012								
2013								
2014	83.3	1.3	1.4	59.6	76.8	4.6	74.5	73.8

¹Short answer rating scale: 0=Insufficient; 1=Partially Sufficient; 2=Sufficient; 3=Exemplary

²Average score points (0-8). A composition is rated twice on a scale of 1 to 4, and the ratings are summed to determine score points for the composition. Score point scale: 0=Nonscorable; 2=Very Limited; 3=between Very Limited and Basic; 4=Basic; 5=between Basic and Satisfactory; 6=Satisfactory; 7=between Satisfactory and Accomplished; 8=Accomplished

PERCENTAGE SATISFACTORY (Levels 2 or 3)

Test	Year	White	African Amer	Hispanic	Econ Disadv	Special Educ	LEP	At Risk	Migrant	Male	Female	All	District
ALGEBRA I	2012	94.7	77.5	83.6	83.5	*	79.2	74.6		81.3	85.7	83.5	74.7
	2013	*	69.4	77.3	73.2	37.5	67.3	64.0		75.8	76.5	76.2	72.5
	2014	*	97.3	89.2	90.3	66.7	88.1	81.3		88.2	93.0	90.7	78.0
Tests Taken	2012	19	40	152	170	3	24	111		107	105	212	8,795
	2013	1	49	233	231	8	52	111		124	162	286	9,251
	2014	5	37	260	259	6	42	123		153	158	311	9,524

NUMBER UNSATISFACTORY (Level 1)

Test	Year	White	African Amer	Hispanic	Econ Disadv	Special Educ	LEP	At Risk	Migrant	Male	Female	All	District
ALGEBRA I	2012	1	9	25	28	*	5	15		20	15	35	2,226
	2013	*	15	53	62	5	17	40		30	38	68	2,540
	2014	*	1	28	25	2	5	23		18	11	29	2,099
Tests Taken	2012	19	40	152	170	3	24	111		107	105	212	8,795
	2013	1	49	233	231	8	52	111		124	162	286	9,251
	2014	5	37	260	259	6	42	123		153	158	311	9,524

PERCENTAGE ADVANCED (Level 3)

Test	Year	White	African Amer	Hispanic	Econ Disadv	Special Educ	LEP	At Risk	Migrant	Male	Female	All	District
ALGEBRA I	2012	0.0	5.0	2.0	2.9	*	4.2	1.7		4.7	0.0	2.4	7.0
	2013	*	0.0	3.0	2.2	0.0	7.7	4.5		2.4	3.1	2.8	8.6
	2014	*	0.0	6.2	5.4	16.7	4.8	1.6		6.5	4.4	5.5	9.9
Tests Taken	2012	19	40	152	170	3	24	59		107	105	212	8,795
	2013	1	49	233	231	8	52	111		124	162	286	9,251
	2014	5	37	260	259	6	42	123		153	158	311	9,524

AVERAGE PERCENTAGE OF ITEMS CORRECT BY REPORTING CATEGORY

ALGEBRA I	1. Functional Relationships	2. Properties and Attributes of Functions	3. Linear Functions	4. Linear Equations and Inequalities	5. Quadratic and Other Nonlinear Functions
2012	54.7	47.6	50.0	45.6	47.9
2013	50.8	41.2	48.0	53.2	46.7
2014	52.8	49.4	59.1	59.4	52.6

PERCENTAGE SATISFACTORY (Levels 2 and 3)

Test	Year	White	African Amer	Hispanic	Econ Disadv	Special Educ	LEP	At Risk	Migrant	Male	Female	All	District
BIOLOGY	2012	96.6	97.8	97.5	97.1	*	97.4	91.8		98.0	97.2	97.6	82.9
	2013	*	92.9	95.9	95.7	66.7	88.4	89.7		96.6	94.5	95.5	84.4
	2014	*	96.8	99.4	98.8	100.0	100.0	97.2		98.9	99.0	99.0	89.8
Tests Taken	2012	29	91	365	410	5	38	97		244	250	494	8,881
	2013	4	98	459	483	9	69	156		266	309	575	9,374
	2014	5	93	476	502	7	63	176		282	306	588	9,672

NUMBER UNSATISFACTORY (Level 1)

Test	Year	White	African Amer	Hispanic	Econ Disadv	Special Educ	LEP	At Risk	Migrant	Male	Female	All	District
BIOLOGY	2012	1	2	9	12	*	1	8		5	7	12	1,522
	2013	*	7	19	21	3	8	16		9	17	26	1,467
	2014	*	3	3	6	0	0	5		3	3	6	987
Tests Taken	2012	29	91	365	410	5	38	97		244	250	494	8,881
	2013	4	98	459	483	9	69	156		266	309	575	9,374
	2014	5	93	476	502	7	63	176		282	306	588	9,672

PERCENTAGE ADVANCED (Level 3)

Test	Year	White	African Amer	Hispanic	Econ Disadv	Special Educ	LEP	At Risk	Migrant	Male	Female	All	District
BIOLOGY	2012	3.4	8.8	7.7	8.3	*	0.0	1.0		8.2	7.2	7.7	4.8
	2013	*	13.3	7.6	8.5	11.1	2.9	3.2		8.6	8.7	8.7	7.5
	2014	*	3.2	8.2	7.8	14.3	4.8	4.5		8.5	6.9	7.7	7.5
Tests Taken	2012	29	91	365	410	5	38	97		244	250	494	8,881
	2013	4	98	459	483	9	69	156		266	309	575	9,374
	2014	5	93	476	502	7	63	176		282	306	588	9,672

AVERAGE PERCENTAGE OF ITEMS CORRECT BY REPORTING CATEGORY

BIOLOGY	1. Cell Structure and Function	2. Mechanisms of Genetics	3. Biological Evolution and Classification	4. Biological Processes and Systems	5. Interdependence within Environmental Systems
2012	57.2	59.3	65.5	51.2	65.8
2013	56.5	58.5	67.0	59.0	65.6
2014	54.9	64.0	71.1	69.7	60.5

PERCENTAGE SATISFACTORY (Levels 2 or 3)

Test	Year	White	African Amer	Hispanic	Econ Disadv	Special Educ	LEP	At Risk	Migrant	Male	Female	All	District
U.S. HISTORY	2012												*
	2013		*	100.0	100.0		*	*		*	100.0	100.0	90.2
	2014	100.0	98.8	99.1	98.9	*	95.5	98.5		99.6	98.7	99.1	92.0
Tests Taken	2012												4
	2013		1	14	14		1	3		1	14	15	51
	2014	16	83	345	360	4	22	202		229	226	455	7,801

NUMBER UNSATISFACTORY (Level 1)

Test	Year	White	African Amer	Hispanic	Econ Disadv	Special Educ	LEP	At Risk	Migrant	Male	Female	All	District
U.S. HISTORY	2012												*
	2013		*	0	0		*	*		*	0	0	5
	2014	0	1	3	4	*	1	3		1	3	4	625
Tests Taken	2012												4
	2013		1	14	14		1	3		1	14	15	51
	2014	16	83	345	360	4	22	202		229	226	455	7,801

PERCENTAGE ADVANCED (Level 3)

Test	Year	White	African Amer	Hispanic	Econ Disadv	Special Educ	LEP	At Risk	Migrant	Male	Female	All	District
U.S. HISTORY	2012												*
	2013		*	0.0	0.0		*	*		*	0.0	0.0	2.0
	2014	12.5	12.0	14.8	14.4	*	4.5	6.4		17.5	11.1	14.3	10.3
Tests Taken	2012												4
	2013		1	14	14		1	3		1	14	15	51
	2014	16	83	345	360	4	22	202		229	226	455	7,801

AVERAGE PERCENTAGE OF ITEMS CORRECT BY REPORTING CATEGORY

U.S. HISTORY	1. History	2. Geography and Culture	3. Government and Citizenship	4. Economics, Science, Technology, and Society
2012				
2013	51.1	70.6	76.0	63.8
2014	62.8	72.2	69.5	75.0

PERCENTAGE DEMONSTRATING IMPROVEMENT


Grade	Level 1 in 2013		Level 2 in 2013		Level 3 in 2013		Levels 1-3 in 2013	
	Number Tested Both Years	Percentage Improved in 2014	Number Tested Both Years	Percentage Improved in 2014	Number Tested Both Years	Percentage Improved in 2014	Number Tested Both Years	Percentage Improved in 2014
9	0		2	*	0		2	*
10	1	*	5	*	0		6	50.0
11	0		3	*	0		3	*
12	0		2	*	0		2	*
ALL	1	*	12	50.0	0		13	46.2

PERFORMANCE IN 2014

Grade 2013-14 (N Rated)	Domain:	Listening		Speaking		Writing		Reading		Composite	
	2014 Level	N	%	N	%	N	%	N	%	N	%
9 (59)	Beginning	0	0.0	0	0.0	3	5.7	0	0.0	0	0.0
	Intermediate	12	22.6	7	13.2	4	7.5	1	1.7	3	5.7
	Advanced	18	34.0	21	39.6	22	41.5	22	37.3	19	35.8
	Advanced High	23	43.4	25	47.2	24	45.3	36	61.0	31	58.5
10 (66)	Beginning	0	0.0	0	0.0	2	3.3	0	0.0	0	0.0
	Intermediate	18	30.0	11	18.3	13	21.7	5	7.6	4	6.7
	Advanced	19	31.7	28	46.7	28	46.7	33	50.0	36	60.0
	Advanced High	23	38.3	21	35.0	17	28.3	28	42.4	20	33.3
11 (25)	Beginning	0	0.0	0	0.0	0	0.0	0	0.0	0	0.0
	Intermediate	3	14.3	3	14.3	5	23.8	2	8.7	1	5.3
	Advanced	8	38.1	7	33.3	6	28.6	10	43.5	8	42.1
	Advanced High	10	47.6	11	52.4	10	47.6	11	47.8	10	52.6
ALL (155)	Beginning	0	0.0	0	0.0	5	3.6	0	0.0	0	0.0
	Intermediate	33	23.7	21	15.1	23	16.5	8	5.3	8	5.9
	Advanced	48	34.5	58	41.7	59	42.4	67	44.1	65	47.8
	Advanced High	58	41.7	60	43.2	52	37.4	77	50.7	63	46.3

**PROGRESSION FROM
2013 TO 2014**

Number Rated Both Years N (%) Progressed	2014 Level	2013 Level			
		Beg	Int	Adv	Adv High
33 18 (54.5%)	Beginning	0			
	Intermediate	0	3		
	Advanced	0	2	12	
	Advanced High	0	0	16	
53 18 (34.0%)	Beginning	0			
	Intermediate	0	3		
	Advanced	0	0	32	
	Advanced High	0	0	18	
16 8 (50.0%)	Beginning	0			
	Intermediate	0	1		
	Advanced	0	0	7	
	Advanced High	0	0	8	
106 46 (43.4%)	Beginning	0			
	Intermediate	0	7		
	Advanced	0	2	53	
	Advanced High	0	1	43	

 Indicates students who progressed at least one level from 2013 to 2014.

Test	Subtest	Year	Percent Tested		All Students			African American			Hispanic			White			District		
			%	Dist %	N	Mean	% at BMRK*	N	Mean	% at BMRK*	N	Mean	% at BMRK*	N	Mean	% at BMRK*	N	Mean	% at BMRK*
SAT	Critical Reading	2011-12	83.2	55.7	381	443	22.6	87	457	29.9	284	437	18.3	4	*	*	4,495	416	18.8
		2012-13	74.6	55.4	362	437	18.2	65	439	20.0	283	435	17.0	4	*	*	4,644	416	19.5
		2013-14	63.0	53.1	245	435	18.4	56	416	10.7	182	440	20.3	2	*	*	4,203	418	20.7
	Mathematics	2011-12	83.2	55.7	381	477	41.5	87	474	41.4	284	476	40.1	4	*	*	4,495	446	29.8
		2012-13	74.6	55.4	362	459	29.6	65	430	20.0	283	465	31.8	4	*	*	4,644	445	29.0
		2013-14	63.0	53.1	245	459	29.8	56	433	17.9	182	464	33.0	2	*	*	4,203	440	27.4
	Writing	2011-12	83.2	55.7	381	428	13.1	87	437	14.9	284	423	11.3	4	*	*	4,495	408	15.9
		2012-13	74.6	55.4	362	423	12.4	65	427	12.3	283	421	12.4	4	*	*	4,644	406	16.1
		2013-14	63.0	53.1	245	423	15.9	56	407	12.5	182	426	15.9	2	*	*	4,203	411	16.9
ACT	English	2011-12	42.1	37.1	193	18	53.9	48	18	66.7	139	17	48.2	1	*	*	2,995	15	33.3
		2012-13	27.6	29.3	134	16	38.8	28	16	42.9	100	16	37.0	3	*	*	2,454	16	34.0
		2013-14	35.5	42.0	138	15	33.3	33	15	36.4	99	15	32.3				3,324	15	29.3
	Mathematics	2011-12	42.1	37.1	193	20	39.4	48	20	41.7	139	20	38.1	1	*	*	2,995	18	22.7
		2012-13	27.6	29.3	134	19	22.4	28	17	10.7	100	19	26.0	3	*	*	2,454	19	24.4
		2013-14	35.5	42.0	138	19	26.8	33	18	18.2	99	19	27.3				3,324	18	21.8
	Reading	2011-12	42.1	37.1	193	18	35.2	48	19	39.6	139	18	33.1	1	*	*	2,995	17	23.7
		2012-13	27.6	29.3	134	18	29.1	28	16	7.1	100	19	34.0	3	*	*	2,454	17	26.5
		2013-14	35.5	42.0	138	17	24.6	33	17	30.3	99	17	21.2				3,324	17	23.8
	Science	2011-12	42.1	37.1	193	20	14.0	48	20	16.7	139	19	11.5	1	*	*	2,995	18	10.8
		2012-13	27.6	29.3	134	19	7.5	28	17	0.0	100	19	9.0	3	*	*	2,454	18	12.7
		2013-14	35.5	42.0	138	18	8.0	33	17	3.0	99	18	8.1				3,324	18	8.7
Composite	2011-12	42.1	37.1	193	19	-	48	20	-	139	19	-	1	*	-	2,995	17	-	
	2012-13	27.6	29.3	134	18	-	28	17	-	100	18	-	3	*	-	2,454	18	-	
	2013-14	35.5	42.0	138	17	-	33	17	-	99	17	-				3,324	17	-	

*See the NOTES report for information about college-readiness benchmarks set by The College Board (SAT) and ACT, Inc.

Grade	Subtest	Year	All			African American			Hispanic			White			Other			District		
			N	Mean	% at BMRK*	N	Mean	% at BMRK*	N	Mean	% at BMRK*	N	Mean	% at BMRK*	N	Mean	% at BMRK*	N	Mean	% at BMRK*
9	Critical Reading	2011	16	39		4	*		11	41		1	*		0			1,979	39	
		2012	23	42		3	*		18	43		0			2	*		1,924	39	
		2013	1	*		0			1	*		0			0			1,788	39	
	Mathematics	2011	16	42		4	*		11	42		1	*		0			1,979	40	
		2012	23	46		3	*		18	46		0			2	*		1,924	40	
		2013	1	*		0			1	*		0			0			1,788	40	
	Writing	2011	16	39		4	*		11	41		1	*		0			1,979	39	
		2012	23	39		3	*		18	40		0			2	*		1,924	39	
		2013	1	*		0			1	*		0			0			1,788	39	
10	Critical Reading	2011	433	40	38.1	88	40	40.9	331	39	36.3	2	*	*	9	43	55.6	7,988	36	25.4
		2012	456	40	42.3	83	40	41.0	339	40	43.1	24	40	37.5	6	41	33.3	8,427	37	23.1
		2013	621	39	34.3	106	40	37.7	497	39	32.8	3	*	*	13	41	53.8	8,854	36	23.3
	Mathematics	2011	433	42	39.3	88	40	26.1	331	43	41.7	2	*	*	9	46	55.6	7,988	38	24.5
		2012	456	42	38.4	83	42	34.9	339	42	39.2	24	40	33.3	6	42	50.0	8,427	38	24.5
		2013	621	41	32.4	106	40	27.4	497	41	32.2	3	*	*	13	46	69.2	8,854	37	19.6
	Writing	2011	433	39	34.9	88	38	31.8	331	39	34.1	2	*	*	9	45	66.7	7,988	36	22.7
		2012	456	41	42.3	83	41	41.0	339	41	43.7	24	40	29.2	6	42	33.3	8,427	37	23.7
		2013	621	38	28.5	106	38	29.2	497	37	28.2	3	*	*	13	38	23.1	8,854	36	21.0
11	Critical Reading	2011	124	44	47.6	13	46	53.8	100	44	46.0	4	*	*	5	*	*	3,980	41	33.2
		2012	20	43	30.0	2	*	*	17	42	23.5	0			0			4,007	41	27.4
		2013	2	*	*	1	*	*	1	*	*	0			0			3,787	42	32.8
	Mathematics	2011	124	47	54.8	13	44	38.5	100	47	55.0	4	*	*	5	*	*	3,980	43	38.0
		2012	20	46	50.0	2	*	*	17	44	47.1	0			0			4,007	43	33.0
		2013	2	*	*	1	*	*	1	*	*	0			0			3,787	44	33.1
	Writing	2011	124	42	31.5	13	44	38.5	100	42	28.0	4	*	*	5	*	*	3,980	40	28.7
		2012	20	44	35.0	2	*	*	17	42	29.4	0			0			4,007	41	33.0
		2013	2	*	*	1	*	*	1	*	*	0			0			3,787	41	32.5

*See the NOTES report for information about college readiness benchmarks set by The College Board for PSAT

Exams Taken		Average Score		Exams Passed		
N	Dist	Score	Dist	N	%	Dist

Exams Taken		Mean Score		Passed		
School	Dist	School	Dist	N	%	Dist

Exams Taken		Mean Score		Passed		
School	Dist	School	Dist	N	%	Dist

ALL EXAMS

1,043	18,984	1.6	1.9	136	13.0	25.1
--------------	--------	------------	-----	------------	-------------	------

Biology

75	738	1.9	1.9	13	17.3	23.4
-----------	-----	------------	-----	-----------	-------------	------

Calculus AB

37	960	1.7	2.5	10	27.0	45.7
-----------	-----	------------	-----	-----------	-------------	------

Calculus BC

9	248	1.3	3.4	1	11.1	69.8
----------	-----	------------	-----	----------	-------------	------

Chemistry

42	388	1.1	2.0	1	2.4	32.0
-----------	-----	------------	-----	----------	------------	------

Economics: Microeconomics

51	487	1.5	1.4	8	15.7	10.5
-----------	-----	------------	-----	----------	-------------	------

English Language & Composition

254	3,194	1.7	1.8	23	9.1	18.1
------------	-------	------------	-----	-----------	------------	------

English Literature & Composition

120	2,374	1.9	1.8	18	15.0	18.0
------------	-------	------------	-----	-----------	-------------	------

Environmental Science

51	986	1.5	1.7	5	9.8	19.8
-----------	-----	------------	-----	----------	------------	------

French Language & Culture

1	27	*	2.6	*	*	48.1
----------	----	---	-----	---	---	------

Government & Politics: United States

66	1,420	1.1	1.3	0	0.0	7.0
-----------	-------	------------	-----	----------	------------	-----

Human Geography

52	753	1.3	2.0	5	9.6	32.8
-----------	-----	------------	-----	----------	------------	------

Physics B

39	315	1.2	2.2	1	2.6	35.9
-----------	-----	------------	-----	----------	------------	------

Physics C: Mechanics

11	198	1.1	2.5	0	0.0	44.4
-----------	-----	------------	-----	----------	------------	------

Psychology

9	421	1.0	1.9	0	0.0	27.6
----------	-----	------------	-----	----------	------------	------

Spanish Language

38	831	3.6	3.5	35	92.1	87.5
-----------	-----	------------	-----	-----------	-------------	------

Spanish Literature

3	133	*	2.7	*	*	57.9
----------	-----	---	-----	---	---	------

Statistics

38	502	1.8	2.1	7	18.4	33.5
-----------	-----	------------	-----	----------	-------------	------

United States History

124	2,570	1.4	1.5	7	5.6	12.6
------------	-------	------------	-----	----------	------------	------

World History

23	1,023	1.6	1.8	1	4.3	18.8
-----------	-------	------------	-----	----------	------------	------

SEMESTER 1 TESTS

Number Tested	Averages				% Passing		District % Passing	
	% Items Correct	Scale Score	Course Mark	Course Mark (no ACP)	ACP	Course	ACP	Course

ALGEBRA I

306	46.9	73.0	81.4	82.9	68.6	95.8	41.1	81.4
-----	------	------	------	------	------	------	------	------

ALGEBRA II

312	39.9	70.0	79.5	81.2	49.4	95.8	47.9	86.0
-----	------	------	------	------	------	------	------	------

ALGEBRA II PRE-AP

214	39.3	69.1	75.9	77.1	49.1	77.1	55.3	89.4
-----	------	------	------	------	------	------	------	------

ART I

384	79.6	84.7	89.7	90.6	96.4	99.7	79.1	94.8
-----	------	------	------	------	------	------	------	------

BIOLOGY

308	55.9	75.5	81.8	83.0	82.8	94.5	61.9	82.5
-----	------	------	------	------	------	------	------	------

BIOLOGY PRE-AP

280	66.5	77.6	82.2	83.0	82.5	92.9	71.3	90.4
-----	------	------	------	------	------	------	------	------

CHEMISTRY

315	42.7	72.7	78.1	79.1	68.9	91.7	49.7	83.5
-----	------	------	------	------	------	------	------	------

CHEMISTRY PRE-AP

312	49.6	73.5	80.8	82.1	72.1	92.6	64.2	93.3
-----	------	------	------	------	------	------	------	------

COMPUTER SCIENCE I PRE-AP

34	36.9	61.4	78.9	82.0	17.6	94.1	70.5	95.8
----	------	------	------	------	------	------	------	------

ECONOMICS

166	63.1	75.4	83.7	85.2	80.7	99.4	69.6	95.1
-----	------	------	------	------	------	------	------	------

ENGLISH I

253	59.8	75.4	84.1	85.7	84.6	99.6	50.7	84.8
-----	------	------	------	------	------	------	------	------

SEMESTER 2 TESTS

Number Tested	Averages				% Passing		District % Passing	
	% Items Correct	Scale Score	Course Mark	Course Mark (no ACP)	ACP	Course	ACP	Course

ALGEBRA I

--	--	--	--	--	--	--	--	--

ALGEBRA II

272	51.5	74.9	79.9	80.7	72.1	91.2	55.9	84.7
-----	------	------	------	------	------	------	------	------

ALGEBRA II PRE-AP

230	53.9	73.4	76.7	77.2	66.1	74.3	69.3	87.2
-----	------	------	------	------	------	------	------	------

ART I

353	75.5	80.2	89.0	90.5	92.6	99.7	75.5	93.6
-----	------	------	------	------	------	------	------	------

BIOLOGY

--	--	--	--	--	--	--	--	--

BIOLOGY PRE-AP

--	--	--	--	--	--	--	--	--

CHEMISTRY

293	58.0	74.8	78.4	79.0	79.2	91.5	59.3	78.5
-----	------	------	------	------	------	------	------	------

CHEMISTRY PRE-AP

302	60.6	73.7	80.3	81.5	69.9	89.0	68.3	91.1
-----	------	------	------	------	------	------	------	------

COMPUTER SCIENCE I PRE-AP

28	42.1	55.4	76.7	80.4	10.7	78.6	78.7	93.8
----	------	------	------	------	------	------	------	------

ECONOMICS

--	--	--	--	--	--	--	--	--

ENGLISH I

253	65.9	76.7	82.6	83.6	86.6	95.3	58.2	81.7
-----	------	------	------	------	------	------	------	------

SEMESTER 1 TESTS

Number Tested	Averages				% Passing		District % Passing	
	% Items Correct	Scale Score	Course Mark	Course Mark (no ACP)	ACP	Course	ACP	Course

ENGLISH I PRE-AP

310	57.6	72.9	80.4	81.7	72.6	91.6	71.2	92.1
-----	------	------	------	------	------	------	------	------

ENGLISH II

299	64.4	76.3	82.1	83.2	80.9	96.7	59.6	83.5
-----	------	------	------	------	------	------	------	------

ENGLISH II FOR ESL

--	--	--	--	--	--	--	--	--

ENGLISH II PRE-AP

342	56.6	74.5	80.2	81.2	73.1	93.6	73.6	91.4
-----	------	------	------	------	------	------	------	------

ENGLISH III

236	65.7	75.5	81.3	82.4	75.4	98.7	55.7	89.1
-----	------	------	------	------	------	------	------	------

ENGLISH IV

250	68.9	79.3	81.4	81.8	91.6	96.4	67.9	91.6
-----	------	------	------	------	------	------	------	------

ENVIRONMENTAL SYSTEMS

159	73.1	80.8	82.6	82.9	90.6	96.2	75.5	97.3
-----	------	------	------	------	------	------	------	------

FRENCH I

90	70.5	80.3	79.8	79.7	86.7	83.3	68.1	85.0
----	------	------	------	------	------	------	------	------

FRENCH II

89	66.8	80.8	84.2	84.8	88.8	94.4	61.5	87.9
----	------	------	------	------	------	------	------	------

GEOMETRY

329	56.7	76.8	81.1	81.8	83.6	95.1	61.9	83.3
-----	------	------	------	------	------	------	------	------

GEOMETRY PRE-AP

276	57.2	72.7	77.5	78.4	65.6	78.6	64.6	89.6
-----	------	------	------	------	------	------	------	------

SEMESTER 2 TESTS

Number Tested	Averages				% Passing		District % Passing	
	% Items Correct	Scale Score	Course Mark	Course Mark (no ACP)	ACP	Course	ACP	Course

ENGLISH I PRE-AP

298	62.9	76.3	80.6	81.3	81.9	95.0	78.6	93.9
-----	------	------	------	------	------	------	------	------

ENGLISH II

288	64.5	75.2	81.0	82.1	76.7	95.5	61.3	80.9
-----	------	------	------	------	------	------	------	------

ENGLISH II FOR ESL

1	*	*	*	*	*	*	62.3	*
---	---	---	---	---	---	---	------	---

ENGLISH II PRE-AP

327	59.2	73.4	78.8	79.8	77.4	86.8	72.2	89.9
-----	------	------	------	------	------	------	------	------

ENGLISH III

240	68.1	73.4	80.2	81.4	70.8	97.9	52.9	82.6
-----	------	------	------	------	------	------	------	------

ENGLISH IV

1	*	*	*	*	*	*	63.2	*
---	---	---	---	---	---	---	------	---

ENVIRONMENTAL SYSTEMS

58	78.2	81.8	82.6	82.7	86.2	89.7	62.8	88.1
----	------	------	------	------	------	------	------	------

FRENCH I

84	69.8	79.9	81.1	81.3	81.0	86.9	65.5	80.1
----	------	------	------	------	------	------	------	------

FRENCH II

81	65.1	77.7	82.9	83.8	75.3	93.8	58.4	81.8
----	------	------	------	------	------	------	------	------

GEOMETRY

321	58.8	77.9	80.4	80.8	80.7	93.5	66.7	79.7
-----	------	------	------	------	------	------	------	------

GEOMETRY PRE-AP

236	48.1	72.2	76.3	77.0	63.6	80.1	66.0	89.1
-----	------	------	------	------	------	------	------	------

SEMESTER 1 TESTS

Number Tested	Averages				% Passing		District % Passing	
	% Items Correct	Scale Score	Course Mark	Course Mark (no ACP)	ACP	Course	ACP	Course

GOVERNMENT

138	68.2	79.7	84.2	84.9	89.1	98.6	58.9	94.1
-----	------	------	------	------	------	------	------	------

HS BAND: LISTENING AND MUSIC ELEMENTS

15	88.9	96.8	98.2	100.0	100.0	67.0	98.9
----	------	------	------	-------	-------	------	------

HS HEALTH EDUCATION

226	73.8	82.5	89.4	90.6	93.4	98.7	81.1	96.5
-----	------	------	------	------	------	------	------	------

MATH MODELS W/APPLICATIONS

5	*	*	*	*	*	*	55.0	*
---	---	---	---	---	---	---	------	---

PHYSICS

293	37.1	68.0	76.9	78.4	38.9	92.1	37.8	85.3
-----	------	------	------	------	------	------	------	------

PHYSICS PRE-AP

264	44.6	67.4	78.4	80.4	39.4	91.3	53.9	94.5
-----	------	------	------	------	------	------	------	------

PRE-CALCULUS

235	49.9	68.7	78.0	79.7	48.1	90.2	53.4	87.9
-----	------	------	------	------	------	------	------	------

PRE-CALCULUS PRE-AP

177	60.4	73.6	79.7	80.7	71.8	93.8	72.6	93.1
-----	------	------	------	------	------	------	------	------

READING III FOR ESL

1	*	*	*	*	*	*	55.1	*
---	---	---	---	---	---	---	------	---

SPANISH FOR NATIVE SPEAKERS I

76	73.5	82.4	84.1	84.4	90.8	98.7	64.4	89.8
----	------	------	------	------	------	------	------	------

SPANISH FOR NATIVE SPEAKERS II

100	72.8	81.9	82.4	82.5	91.0	98.0	62.7	94.3
-----	------	------	------	------	------	------	------	------

SEMESTER 2 TESTS

Number Tested	Averages				% Passing		District % Passing	
	% Items Correct	Scale Score	Course Mark	Course Mark (no ACP)	ACP	Course	ACP	Course

GOVERNMENT

--	--	--	--	--	--	--	--	--

HS BAND: LISTENING AND MUSIC ELEMENTS

11	95.4	96.1	96.2	100.0	100.0	84.0	96.5
----	------	------	------	-------	-------	------	------

HS HEALTH EDUCATION

209	78.3	84.5	88.9	89.7	97.1	99.0	76.7	95.7
-----	------	------	------	------	------	------	------	------

MATH MODELS W/APPLICATIONS

7	49.5	74.8	88.4	90.8	85.7	100.0	58.5	85.3
---	------	------	------	------	------	-------	------	------

PHYSICS

228	37.1	66.9	76.2	77.8	31.1	85.5	53.6	82.4
-----	------	------	------	------	------	------	------	------

PHYSICS PRE-AP

246	40.7	68.8	75.6	76.8	42.7	87.3	62.4	91.8
-----	------	------	------	------	------	------	------	------

PRE-CALCULUS

96	35.2	68.1	77.0	78.5	40.6	85.4	48.2	82.4
----	------	------	------	------	------	------	------	------

PRE-CALCULUS PRE-AP

151	52.1	72.4	81.0	82.5	63.6	86.8	62.6	90.8
-----	------	------	------	------	------	------	------	------

READING III FOR ESL

1	*	*	*	*	*	*	64.7	*
---	---	---	---	---	---	---	------	---

SPANISH FOR NATIVE SPEAKERS I

73	73.8	82.5	83.8	84.0	93.2	95.9	68.1	84.6
----	------	------	------	------	------	------	------	------

SPANISH FOR NATIVE SPEAKERS II

94	74.5	83.0	81.9	81.7	92.6	93.6	69.8	88.6
----	------	------	------	------	------	------	------	------

SEMESTER 1 TESTS

Number Tested	Averages				% Passing		District % Passing	
	% Items Correct	Scale Score	Course Mark	Course Mark (no ACP)	ACP	Course	ACP	Course

SPANISH I

269	76.9	84.6	86.3	86.6	81.4	97.0	71.3	91.2
-----	------	------	------	------	------	------	------	------

SPANISH II

348	77.2	84.8	85.6	85.8	85.9	98.6	72.2	93.0
-----	------	------	------	------	------	------	------	------

U.S. HISTORY

230	69.6	76.6	84.4	85.8	78.7	98.7	51.5	86.9
-----	------	------	------	------	------	------	------	------

WORLD GEOGRAPHY

273	62.6	78.0	85.1	86.3	85.0	99.3	48.7	86.7
-----	------	------	------	------	------	------	------	------

WORLD GEOGRAPHY PRE-AP

287	65.8	77.2	82.9	84.0	80.8	98.3	75.0	94.9
-----	------	------	------	------	------	------	------	------

WORLD HISTORY

299	53.5	73.2	82.5	84.2	62.2	95.7	48.3	90.0
-----	------	------	------	------	------	------	------	------

WORLD HISTORY PRE-AP

275	59.1	72.8	81.6	83.2	61.1	93.1	65.5	95.0
-----	------	------	------	------	------	------	------	------

SEMESTER 2 TESTS

Number Tested	Averages				% Passing		District % Passing	
	% Items Correct	Scale Score	Course Mark	Course Mark (no ACP)	ACP	Course	ACP	Course

SPANISH I

259	79.5	86.3	81.4	80.5	83.8	86.9	72.9	84.3
-----	------	------	------	------	------	------	------	------

SPANISH II

312	81.4	87.6	84.0	83.3	89.7	94.6	76.5	89.2
-----	------	------	------	------	------	------	------	------

U.S. HISTORY

--	--	--	--	--	--	--	--	--

WORLD GEOGRAPHY

260	62.2	77.3	85.2	86.6	85.8	99.2	57.7	82.9
-----	------	------	------	------	------	------	------	------

WORLD GEOGRAPHY PRE-AP

262	66.9	77.9	83.2	84.2	85.1	93.1	79.5	94.5
-----	------	------	------	------	------	------	------	------

WORLD HISTORY

288	59.5	73.0	81.3	82.7	67.7	92.7	58.5	85.3
-----	------	------	------	------	------	------	------	------

WORLD HISTORY PRE-AP

259	62.4	71.8	81.9	83.6	57.5	94.6	65.4	94.3
-----	------	------	------	------	------	------	------	------